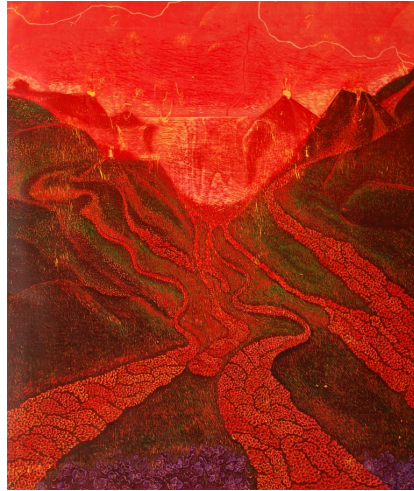


FOR IMMEDIATE RELEASE

# Gitler & \_\_\_\_\_

## Presents Soghra Khurasani: *To Speak for the Mute*

January 20 – February 23, 2015  
Closing reception: Sunday, Feb 22, 12-3 PM



*Flooded Fields and Silent Torso 1, 2014;*  
woodcut print on paper, 44x52 in.

(January 20, 2015) Gitler & \_\_\_\_\_ is proud to present *To Speak for the Mute* from Indian artist Soghra Khurasani, marking the artist's first solo exhibition in the U.S. and her first time exhibiting with Gitler. The month-long show is comprised of several new woodcut landscape prints on paper, each one intricately composed to evoke a painterly effect. A closing reception will be held on Sunday, February 22 beginning at 12:00 PM.

Melancholy, violent, and pastoral all at once, the vibrant reds that populate each of Khurasani's landscapes assume the form of clustered blood cells, which in turn masquerade as fields of roses, poppies, or flowing lava, cutting through and pouring over fields like hemorrhaging veins that have reached their breaking point. The all-consuming reds—while delicate and refined in their detail—reveal how something beautiful can assume the shape of something horrifying as it spreads and infects its host.

The surgical process of woodcut printmaking naturally lends itself to Khurasani's themes, suggesting an approach that is both masochistic and cathartic, yet largely free of anger. Despite the noticeable absence of people in these compositions, Khurasani's color fields rely on internal human anatomy as much as they do the numerous recent atrocities that have caused so much bloodshed and rendered so many citizens mute in her native India.

Gitler & \_\_\_\_\_ is an art gallery dedicated to showcasing rising artists from around the world. Founded and curated by Elliot Avi Gitler, Gitler & \_\_\_\_\_ seeks out talent through chance and word-of-mouth, moving in between genres to identify original craftsmen and visionaries who may not otherwise be brought to market. Formerly a pop-up gallery that held various solo and group shows throughout NYC and beyond, Gitler premiered its permanent Harlem location in September 2014. For more info visit [www.gitlerand.com](http://www.gitlerand.com).

###

Contact:  
Elliot Avi Gitler  
3629 Broadway  
NYC 10031  
[eag@gitlerand.com](mailto:eag@gitlerand.com)  
(201) 887-4764

[www.gitlerand.com](http://www.gitlerand.com)