

# Community Hazard Assessments

## County of Maui

### Central Maui

#### Coordinated and Developed by:

Hawaii Wildfire Management Organization, a 501(c)3 nonprofit organization dedicated to protecting Hawaii's communities and natural resources from wildfire.



#### In Collaboration with:

Hawaii Fire Department and State of Hawaii Department of Land and Natural Resources Division of Forestry and Wildlife



Disclaimer: The HWMO Hawaii Hazard Assessment Maps have been prepared to increase awareness on potential wildfire threats to communities across the Hawaiian islands. However, HWMO does not guarantee a house will survive a wildfire event and having a low hazard rating does not “fire proof” an individual house or a given area or subdivision; instead, reducing the hazard rating lowers wildfire threats and improves the potential for wildfire suppression to be successful.

It is important to recognize that the HWMO hazard assessment process is a qualitative ranking system that arbitrarily ranks different factors perceived to contribute to the threat of wildfires at the wildland-urban interface (WUI). The assessment does not include the full range of realistic fire and ember exposures at the WUI and offers no actual quantification of the potential exposure of homes to the ignition, spread, and intensity of wildfires or embers produced by wildfires. Furthermore, the HWMO Wildfire Hazard Assessment is a community-level assessment that produces a rating based on a select number of houses in a given area or subdivision. While such an approach gives an indication of the general wildfire risk for a given area, the actual risk of individual homes can deviate from this assessment based on the characteristics of the site around an individual home.

# Subdivision Rating

## HWMO Wildfire Hazard Assessment Key

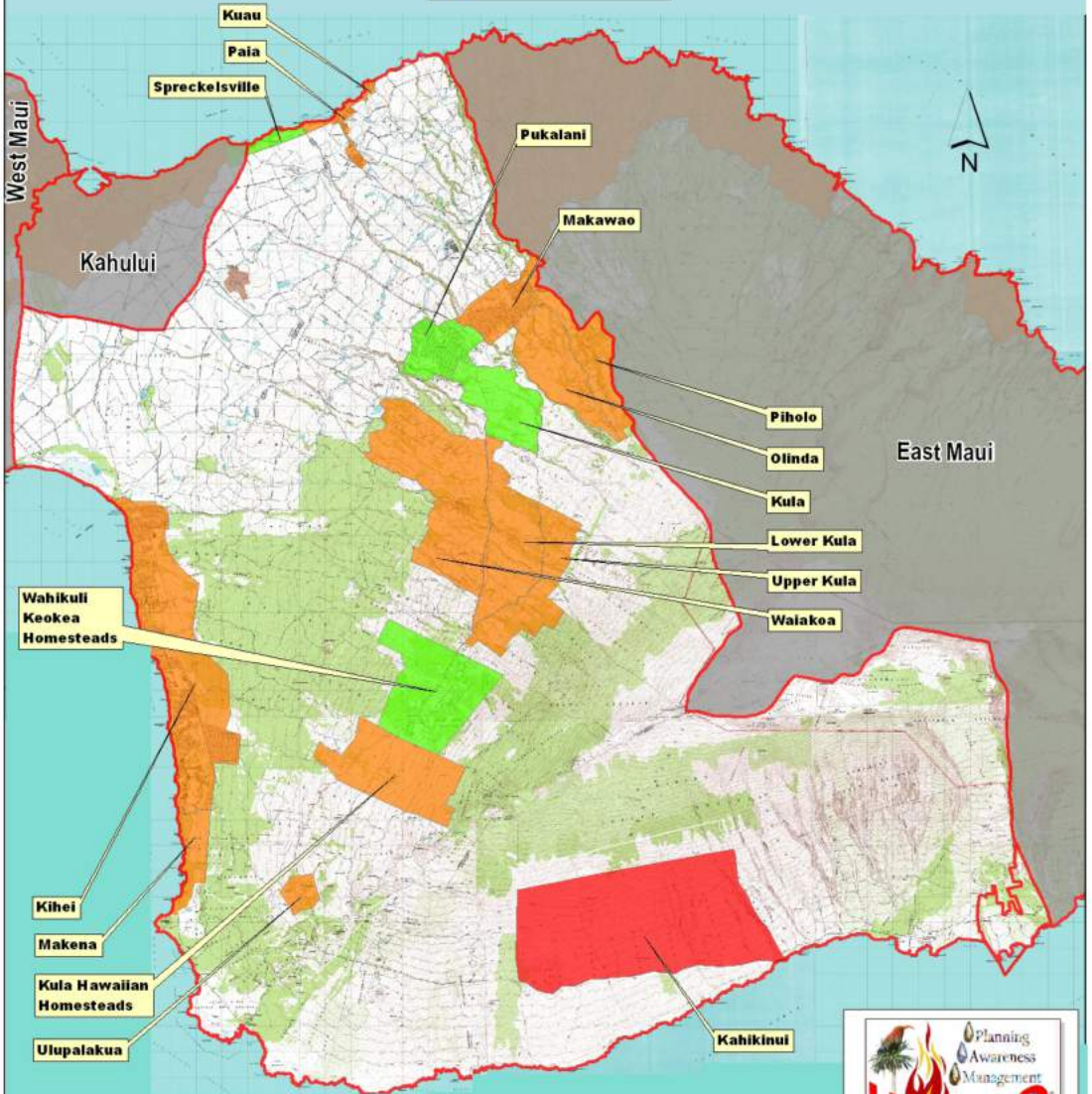
<b>Subdivision Hazard Rating</b>			
<b>Rating Element</b>	<b>Low (Score =1)</b>	<b>Moderate (Score=2)</b>	<b>High (Score=3)</b>
<b>Ingress/ Egress</b>	Multiple entrances and exits are well equipped for fire trucks with turnarounds.	Limited access routes. 2 ways in and 2 ways out. Moderate grades.	Narrow, dead end roads or 1 way in, 1 way out. Steep grades
<b>Road Maintenance</b>	Wide loop roads that are maintained, paved or solid surface with shoulders.	Roads maintained. Some narrow two lane roads with no shoulders.	Narrow and or single lane, minimally maintained, no shoulders.
<b>Road Width</b>	24'+ wide. Wide roads with drivable shoulders and good visibility allow two-way traffic. Streets in the downtown area are the widest streets in town. Interior streets are smaller and are easily blocked by parked vehicles.	20'-24' wide. Medium width roads with drivable shoulders and good visibility, support evacuation and emergency response time.	Less than 20 feet wide. Narrow roads coupled with poor visibility limit evacuation and emergency response. Traffic problems will occur. Entrapment is likely.
<b>All-season Road Condition</b>	Flat or gently sloping surfaced roads can support high volumes of large fire equipment.	Surfaced road with 5%+ grade or non-surfaced road with <5% grade that can still support fire equipment. Road and right-of-way maintenances is essential for access and visibility.	Narrow, steep, or non-surfaced roads are difficult to access. One-way traffic is a hazard. Overhanging brush may damage fire equipment. Jeep trails and seasonal roads limit 2wd emergency response equipment.
<b>Fire Service Access</b>	Adequate turnaround space is available for large fire equipment.	<300' with no turnaround. Short or dead-end streets will become crowded with homeowner's vehicles.	300'+ with no turnaround. Long dead-end streets will become crowded with vehicles. Two-way visibility is an issue.
<b>Street signs</b>	Present. Most are at least 4' in size and are reflectorized.	Present and reflectorized with some exceptions.	Not present.
<b>Structure Density</b>	Low structure density and low ignition probability.	Density and ignition probability are both moderate, or one is high but is balanced by the other being low.	Dense structures with high ignition probability.
<b>Home Setbacks</b>	Majority (50%+) of homes are set back from property lines and slopes by at least 30 feet.	10-50% of homes have defensible setbacks from property lines and sloped areas.	<10% of homes have defensible setbacks from property lines. Buildings located close to dangerous topographic features such as the tops of slopes.

## HWMO Wildfire Hazard Assessment Key

<p><b>Unmanaged, untended, undeveloped lands</b></p>	<p>Few to no weedy vacant lots. Few to no undeveloped unmaintained vegetated areas or corridors between homes. Less than 10% of lots remain undeveloped and pose an additional wildfire hazard due to lack of maintenance and/or restricted access.</p>	<p>Some isolated unmaintained lots or undeveloped vegetated areas within subdivision. 10-50% of lots have not been developed and pose an additional wildfire hazard due to lack of maintenance and/or restricted access. Hazard ranking is dependent on ignition risk, size of area, and fuel type.</p>	<p>Abundant unmanaged, vegetated corridors and vacant lots throughout community. Agricultural lands irregularly maintained leaving dry weedy species causing increased ignition risk. Numerous ladder fuels and high risk fuels. Greater than 75% of lots have not been developed or Separation of adjacent structures that can contribute to fire spread</p>
<p><b>Private landowner actions / Firewise landscaping and defensible space</b></p>	<p>70% of homes have improved survivable space around property, reduced ignition risk, hardened homes, and no ladder fuels.</p>	<p>30-70% homes have improved survivable space around property and well-maintained landscapes.</p>	<p>&lt;30% of homes have defensible space, hardened home features, or Firewise landscaping</p>
<p><b>Proximity of subdivision to wildland areas</b></p>	<p>Wildland areas share no borders with the subdivision. Little to no undeveloped and unmaintained vegetated areas within community. Little to no ladder fuels along community boundaries.</p>	<p>Wildland areas adjoin subdivision on 1-2 sides.</p>	<p>Wildland areas surround subdivision on at least 3 sides.</p>

# Central Maui Hazard Assessment

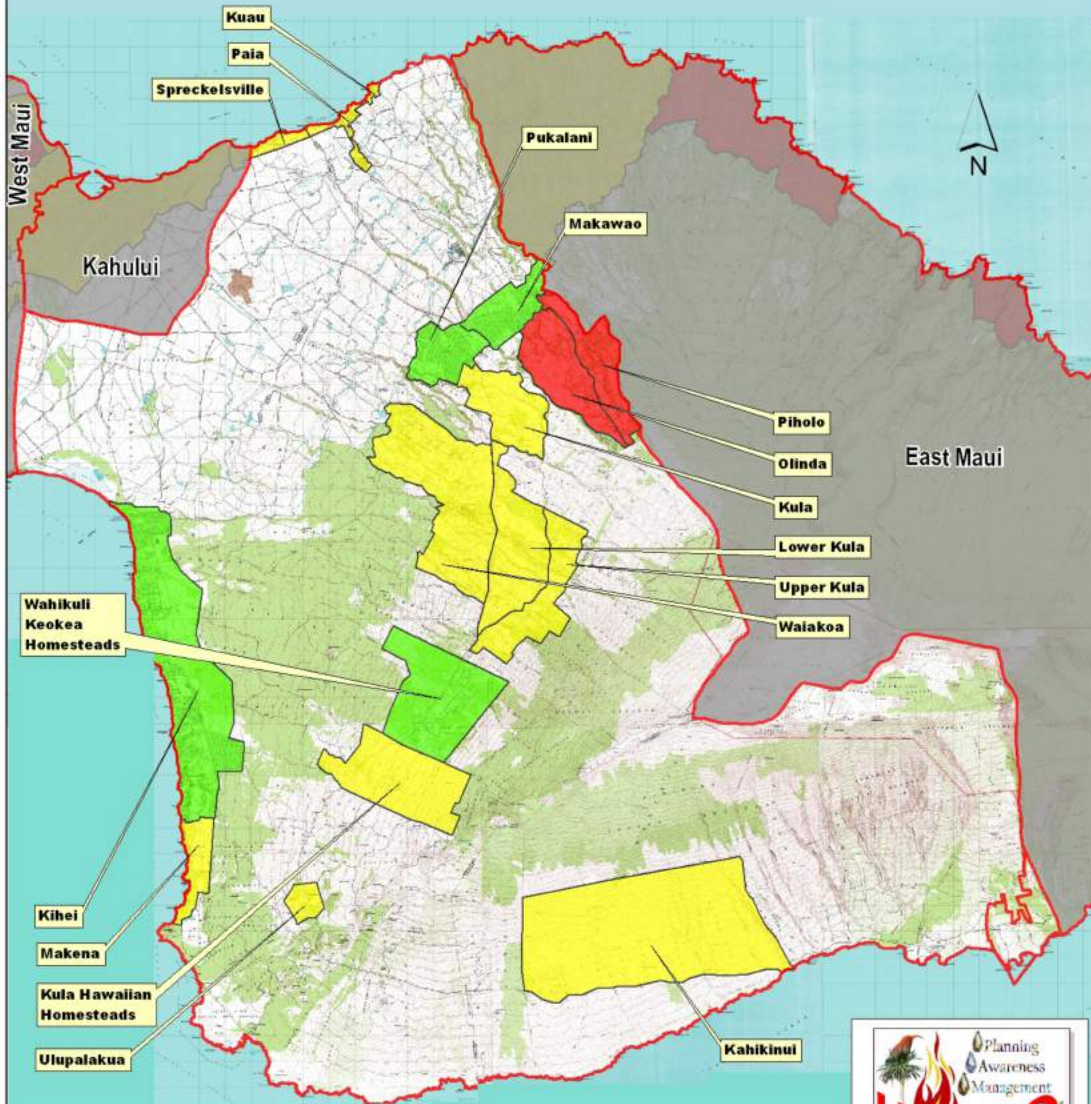
## Subdivision Rating Total



# Central Maui Hazard Assessment

## Subdivision Rating - Ingress/Egress

INGRESS / EGRESS		
LOW HAZARD	MODERATE HAZARD	HIGH HAZARD
Multiple entrances and exits are well equipped for fire trucks with turnarounds.	Limited access routes. Two ways in and two ways out. Moderate grades.	Narrow, dead end roads or one way in, One way out. Steep grades.



**Ingress/Egress**

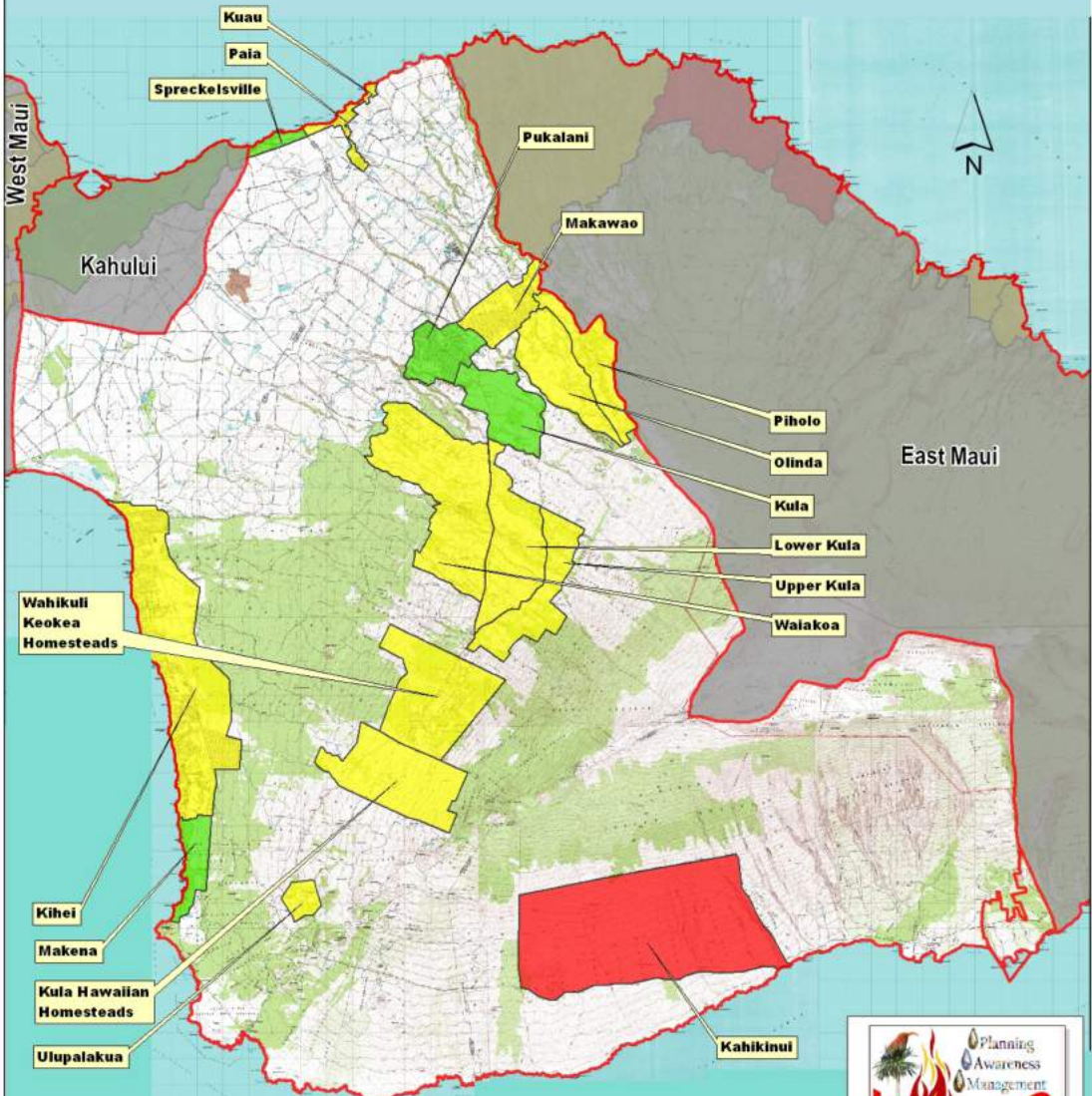
- Low Hazard
- Moderate Hazard
- High Hazard



# Central Maui Hazard Assessment

## Subdivision Rating - Road Maintenance

ROAD MAINTENANCE		
LOW HAZARD	MODERATE HAZARD	HIGH HAZARD
Wide loop roads that are maintained, paved or solid surface with shoulders.	Roads maintained. Some narrow two lane roads with no shoulders.	Narrow and or single lane, minimally maintained, no shoulders.



**Road Maintenance**

- Low Hazard
- Moderate Hazard
- High Hazard

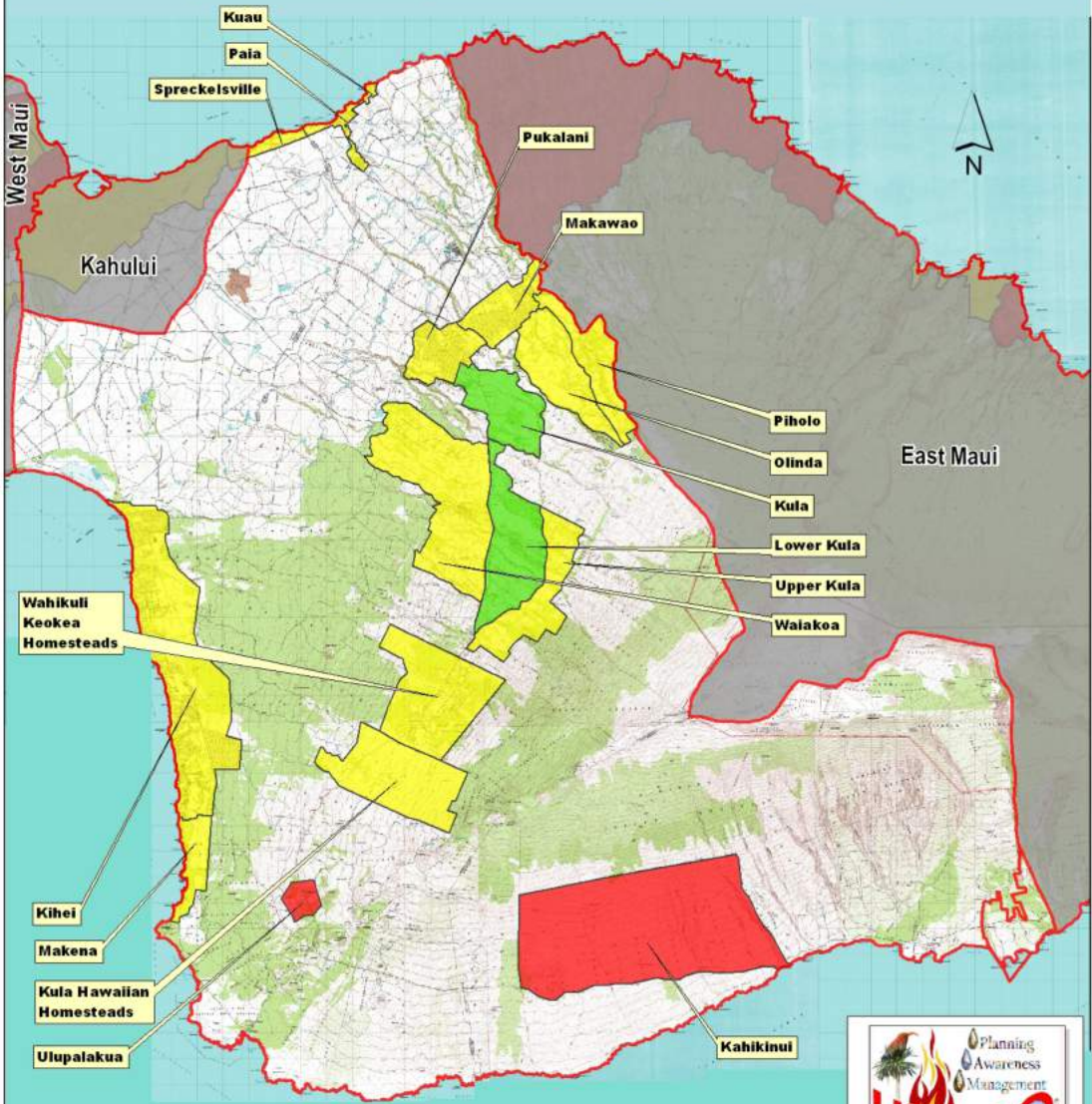
Planning Awareness Management  
**HWMO**  
 Hawaii Wildfire Management Organization



# Central Maui Hazard Assessment

## Subdivision Rating - Road Width

ROAD WIDTH		
LOW HAZARD	MODERATE HAZARD	HIGH HAZARD
24'+ wide. Wide roads with drivable shoulders and good visibility allow two-way traffic. Streets in the downtown area are the widest streets in town. Interior streets are smaller and are easily blocked by parked vehicles.	20'-24' wide. Medium width roads with drivable shoulders and good visibility, support evacuation and emergency response time.	Less than 20 feet wide. Narrow roads coupled with poor visibility limit evacuation and emergency response. Traffic problems will occur. Entrapment is likely.



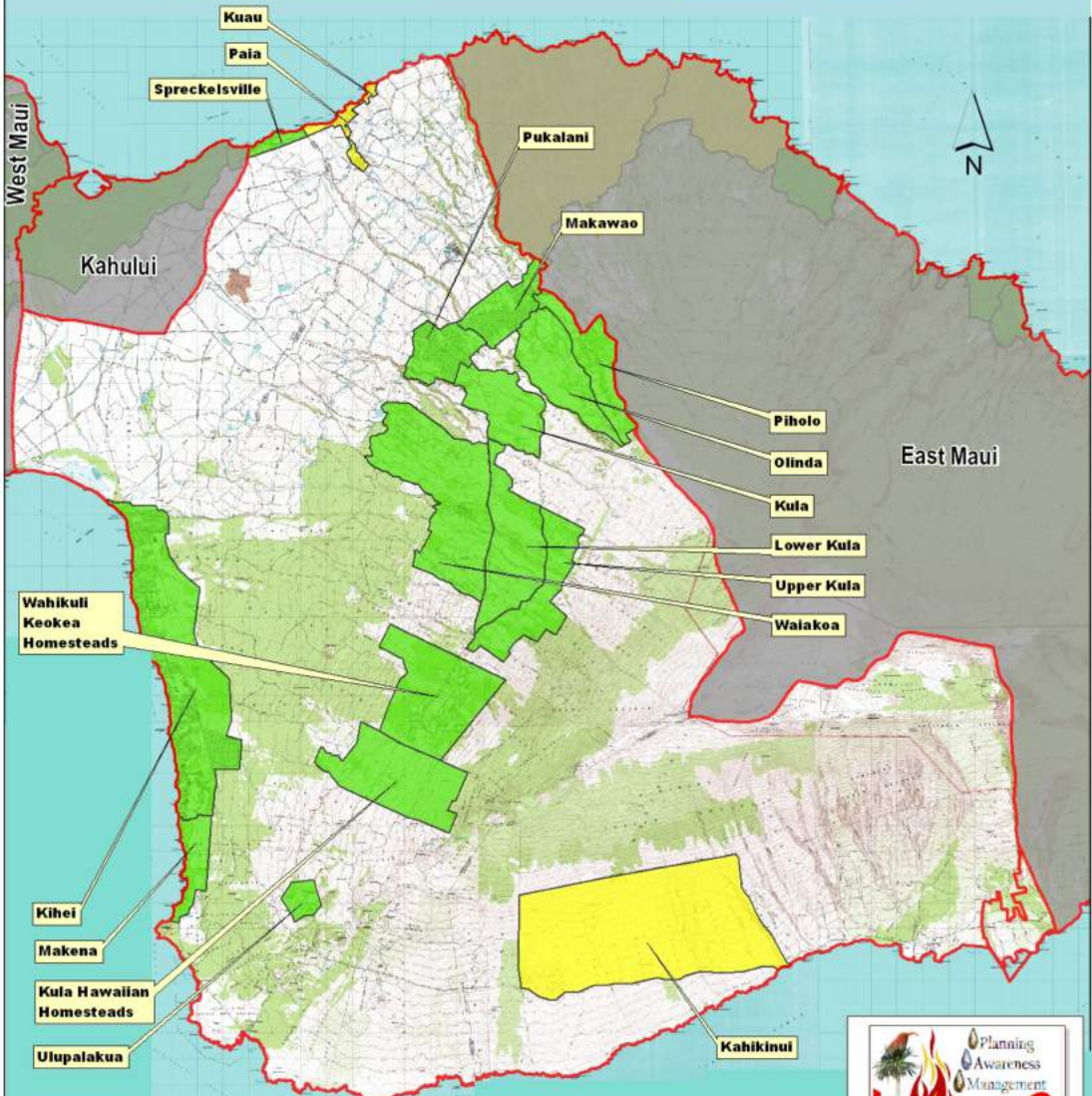
**Road Width**

- Low Hazard
- Moderate Hazard
- High Hazard

# Central Maui Hazard Assessment

## Subdivision Rating - All Season Road Condition

ALL SEASON ROAD CONDITION		
LOW HAZARD	MODERATE HAZARD	HIGH HAZARD
Flat or gently sloping surfaced roads can support high volumes of large fire equipment.	Surfaced road with 5%+ grade or non-surfaced road with <5% grade that can still support fire equipment. Road and right-of-way maintenances is essential for access and visibility.	Narrow, steep, or non-surfaced roads are difficult to access. One-way traffic is a hazard. Overhanging brush may damage fire equipment. Jeep trails and seasonal roads limit 2nd emergency response equipment.



**Road Condition**

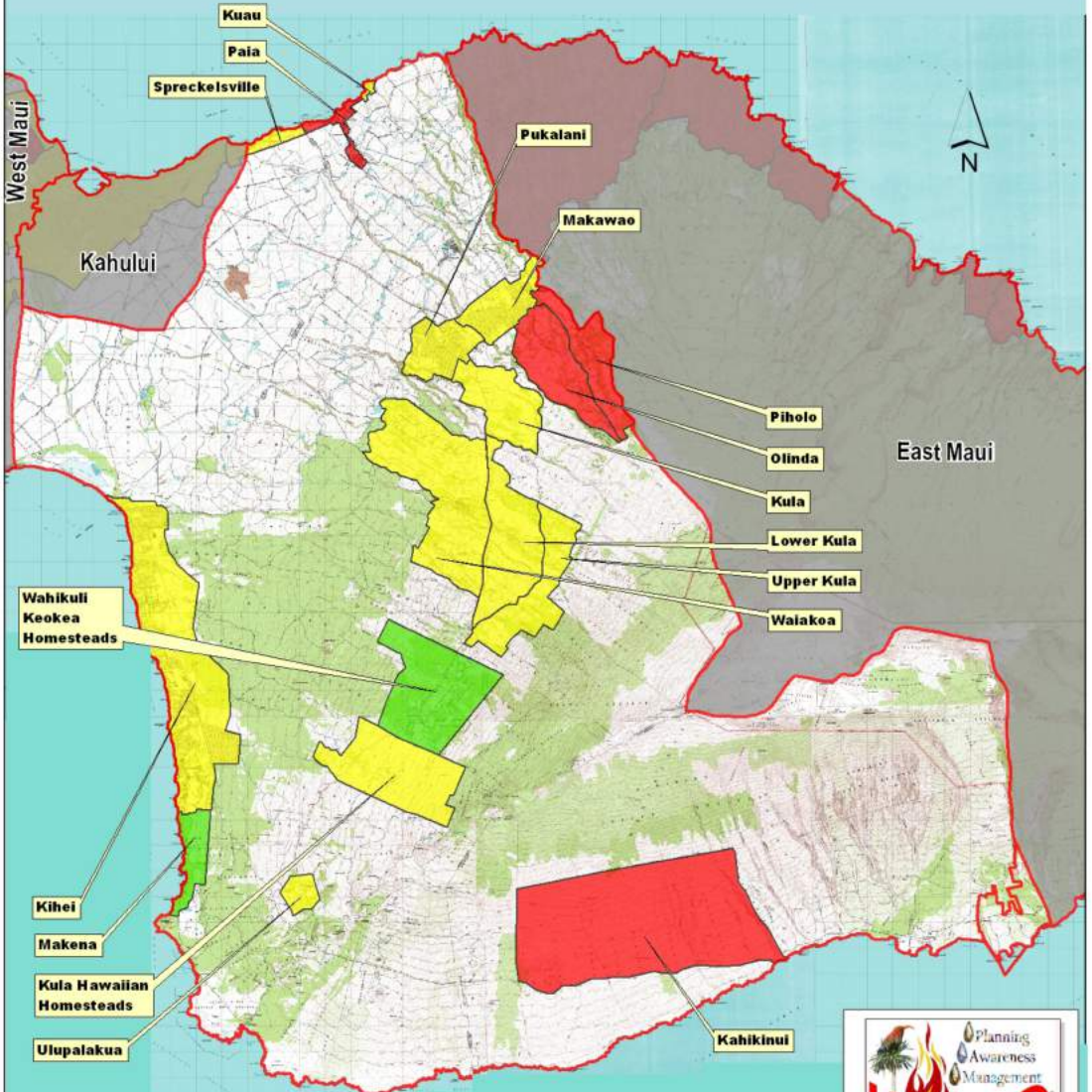
- Low Hazard
- Moderate Hazard
- High Hazard

Planning Awareness Management  
**HWMO**  
Hawaii Wildfire Management Organization

# Central Maui Hazard Assessment

## Subdivision Rating - Fire Service Access

FIRE SERVICE ACCESS		
LOW HAZARD	MODERATE HAZARD	HIGH HAZARD
Adequate turnaround space is available for large fire equipment.	<300' with no turnaround. Short or dead-end streets will become crowded with homeowner's vehicles.	300'+ with no turnaround. Long dead-end streets will become crowded with vehicles. Two-way visibility is an issue.



**Fire Service Access**

- Low Hazard
- Moderate Hazard
- High Hazard

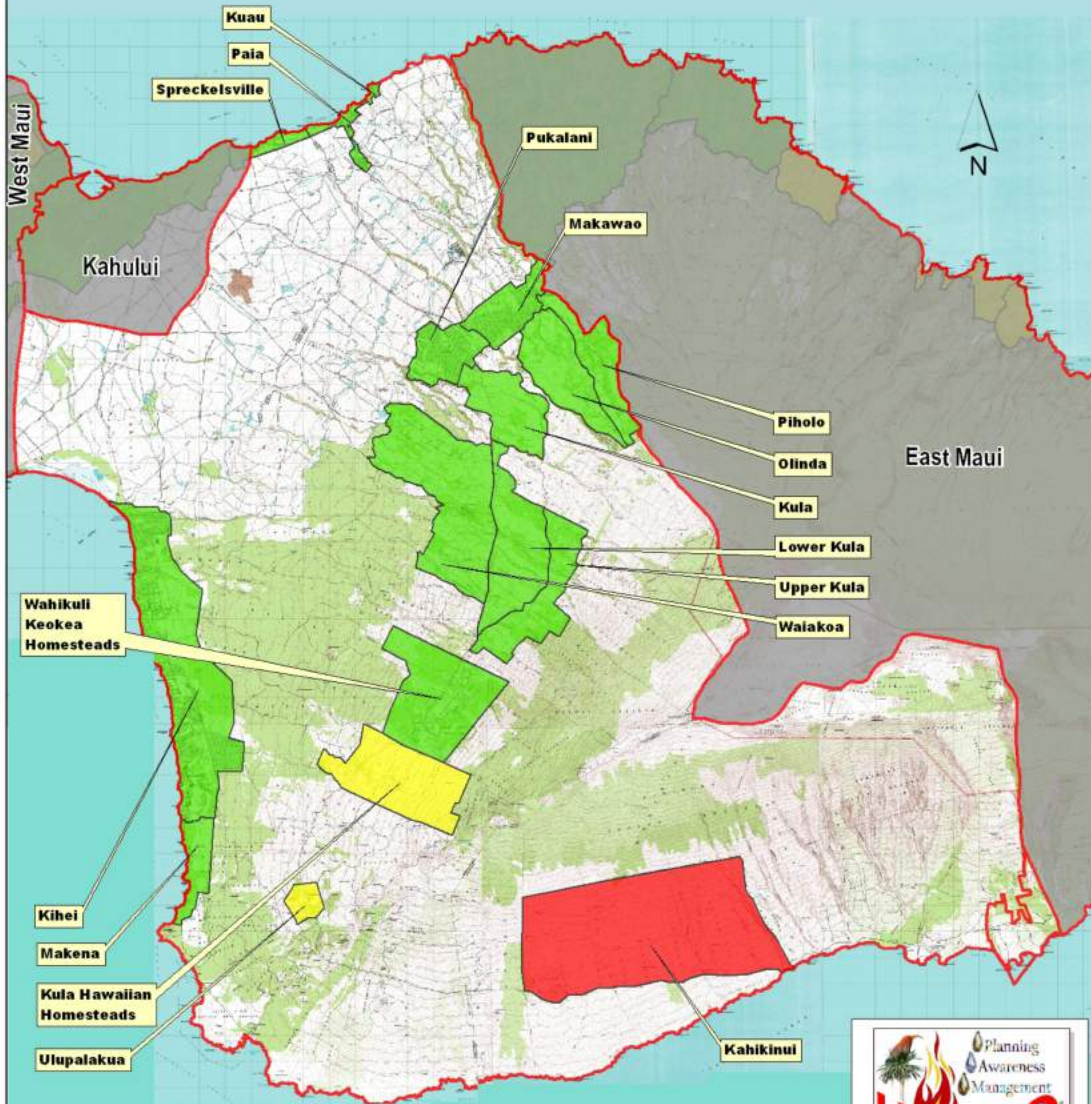
Planning Awareness Management  
**HWMO**  
Hawaii Wildfire Management Organization

MAUI COUNTY  
PLANNING AWARENESS MANAGEMENT  
HAWAII

# Central Maui Hazard Assessment

## Subdivision Rating - Street Signs

STREET SIGNS		
LOW HAZARD	MODERATE HAZARD	HIGH HAZARD
Present. Most are at least 4' in size and are reflectorized.	Present and reflectorized with some exceptions.	Not present.



**Street Signs**

- Low Hazard
- Moderate Hazard
- High Hazard

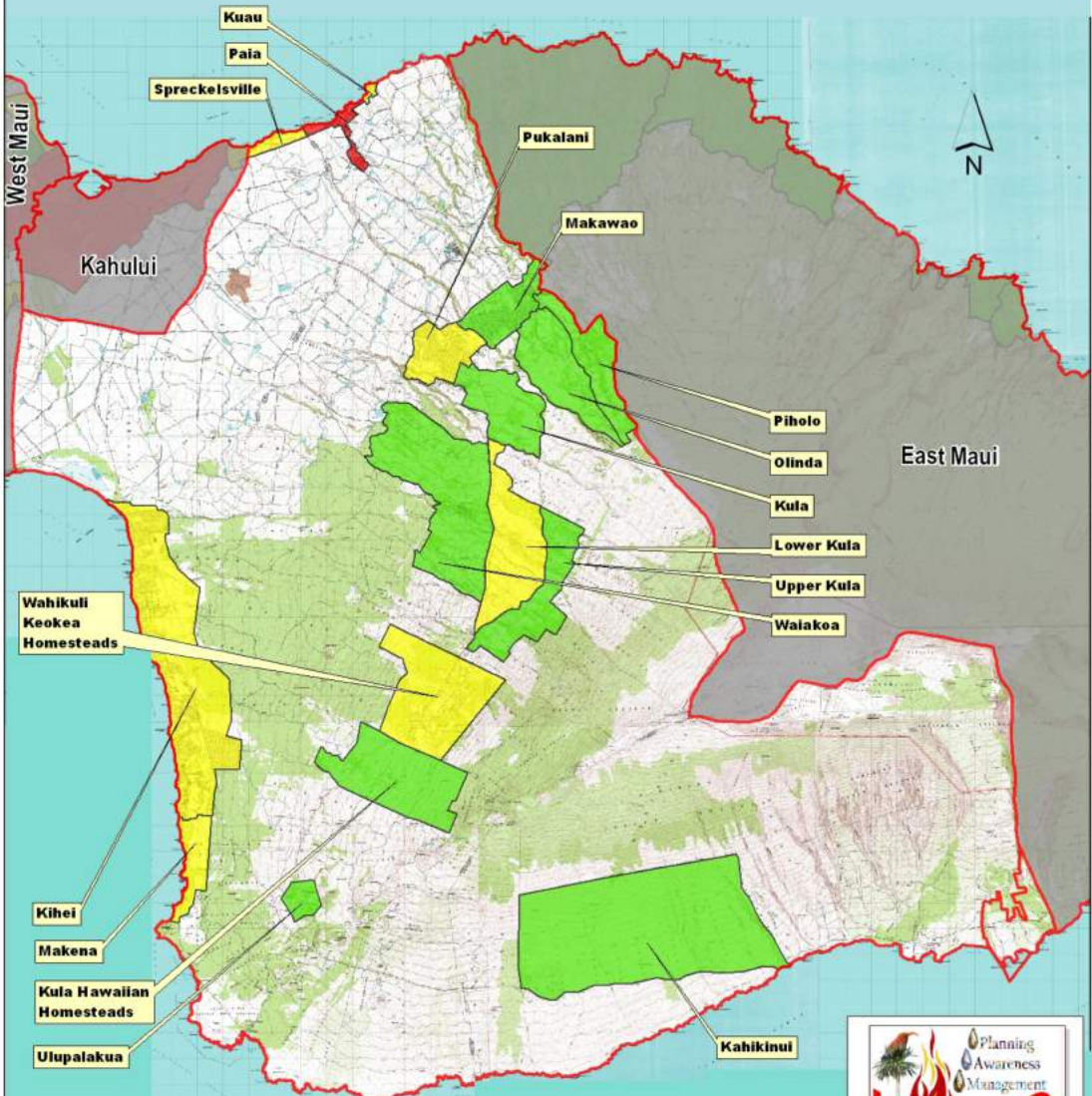
Planning Awareness Management  
**HWMO**  
Hawaii Wildfire Management Organization

MAUI COUNTY  
COUNTY OF MAUI

# Central Maui Hazard Assessment

## Subdivision Rating - Structure Density

STRUCTURE DENSITY		
<b>LOW HAZARD</b>	<b>MODERATE HAZARD</b>	<b>HIGH HAZARD</b>
Low structure density and low ignition probability.	Density and ignition probability are both moderate, or one is high but is balanced by the other being low.	Dense structures with high ignition probability.



**Structure Density**

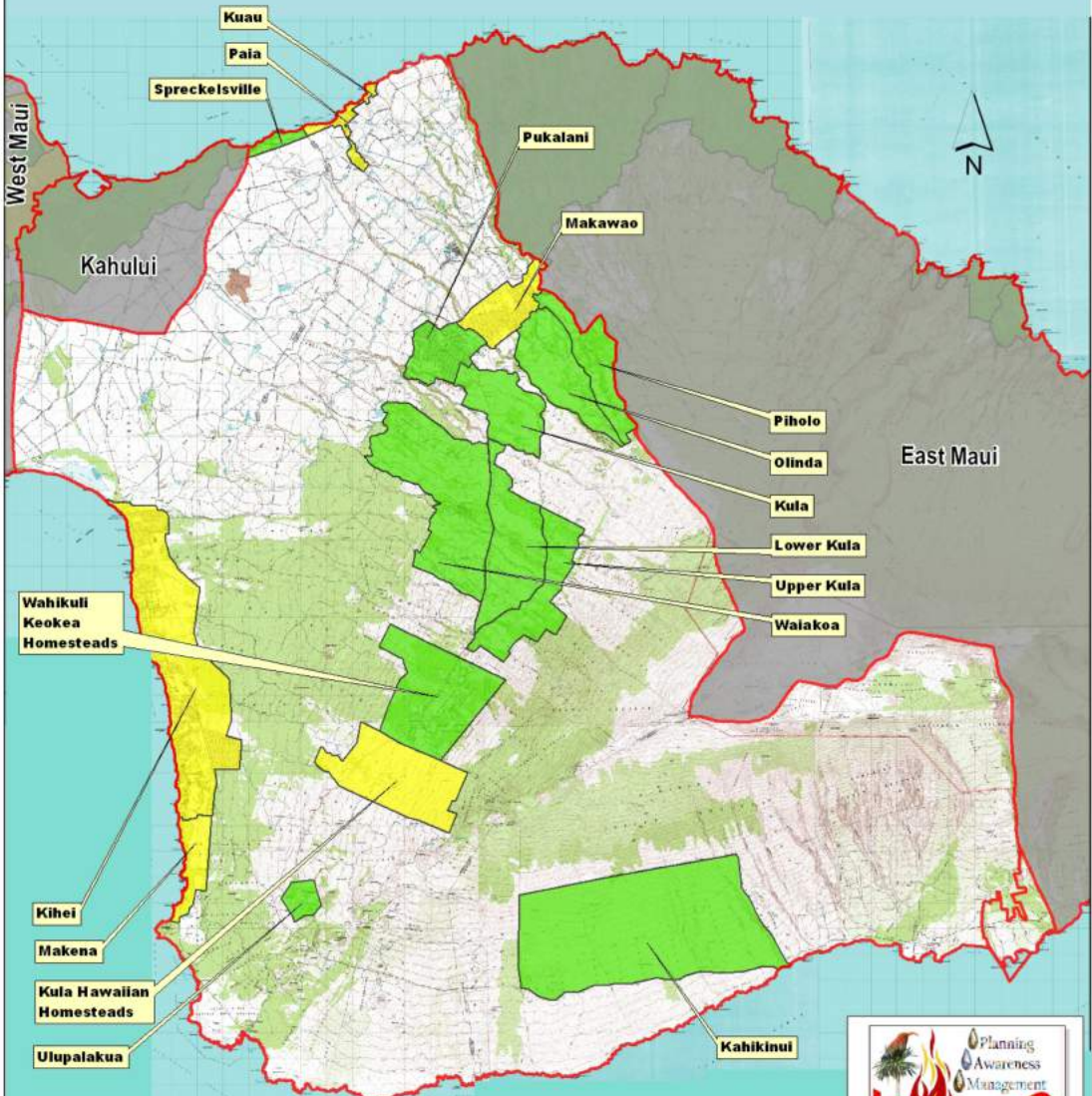
- Low Hazard
- Moderate Hazard
- High Hazard

Planning Awareness Management  
**HWMO**  
Hawaii Wildfire Management Organization

# Central Maui Hazard Assessment

## Subdivision Rating - Home Setbacks

HOME SETBACKS		
<b>LOW HAZARD</b>	<b>MODERATE HAZARD</b>	<b>HIGH HAZARD</b>
Majority (50%+) of homes are set back from property lines and slopes by at least 30 feet.	10-50% of homes have defensible setbacks from property lines and sloped areas.	<10% of homes have defensible setbacks from property lines. Buildings located close to dangerous topographic features such as the tops of slopes.



**Home Setbacks**

- Low Hazard
- Moderate Hazard
- High Hazard

Planning Awareness Management  
**HWMO**  
Hawaii Wildfire Management Organization

MAUI COUNTY  
HAWAII STATE DEPARTMENT OF LAND AND NATURAL RESOURCES

# Central Maui Hazard Assessment

## Subdivision Rating - Unmanaged, Unattended, Undeveloped Lands

### UNTENDED LANDS

#### LOW HAZARD

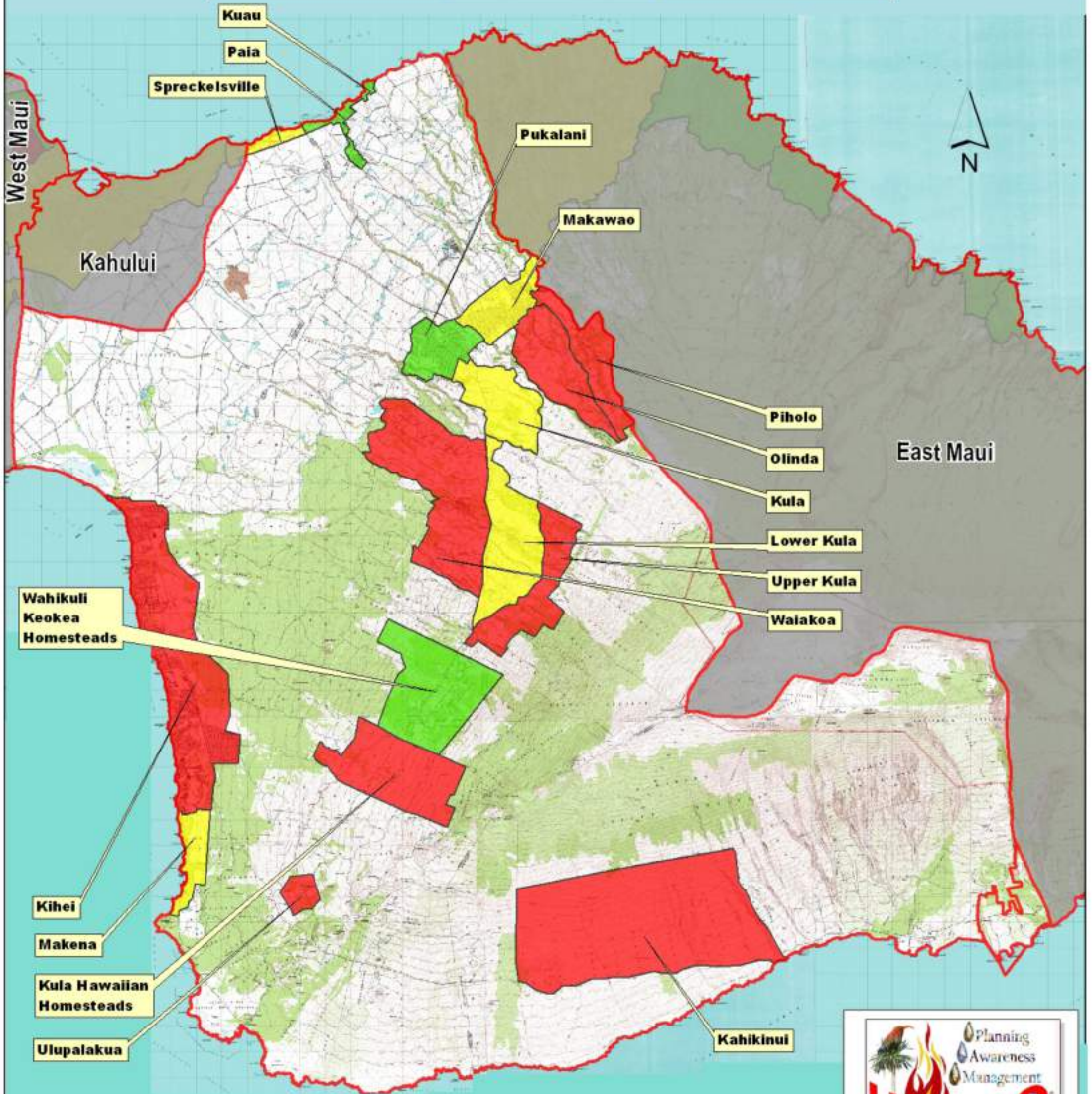
Few to no weedy vacant lots. Few to no undeveloped unmaintained vegetated areas or corridors between homes. Less than 10% of lots remain undeveloped and pose an additional wildfire hazard due to lack of maintenance and/or restricted access.

#### MODERATE HAZARD

Some isolated unmaintained lots or undeveloped vegetated areas within subdivision. 10-50% of lots have not been developed and pose an additional wildfire hazard due to lack of maintenance and/or restricted access. Hazard ranking is dependent on ignition risk, size of area, and fuel type.

#### HIGH HAZARD

Abundant unmanaged, vegetated corridors and vacant lots throughout community. Agricultural lands irregularly maintained leaving dry woody species causing increased ignition risk. Numerous ladderfuels and high risk fuels. Greater than 75% of lots have not been developed or Separation of adjacent structures that can contribute to fire spread



**Unmanaged Lands**

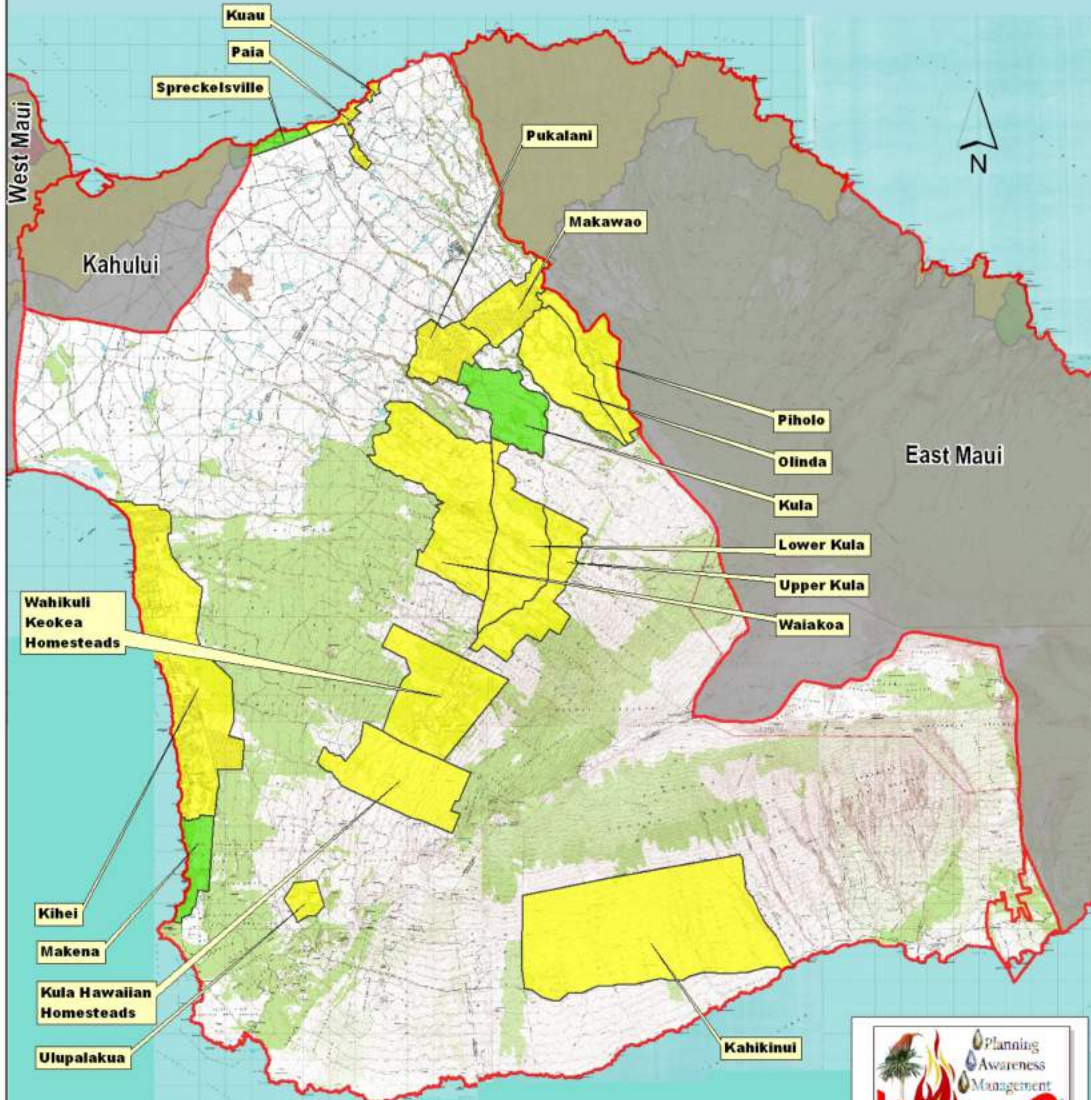
- Low Hazard
- Moderate Hazard
- High Hazard

Planning Awareness Management  
**HWMO**  
Hawaii Wildfire Management Organization

# Central Maui Hazard Assessment

## Subdivision Rating - Private Landowner Firewise Landscaping & Defensible Space

PRIVATE LANDOWNER FIREWISE LANDSCAPING/ DEFENSIBLE SPACE		
<b>LOW HAZARD</b>	<b>MODERATE HAZARD</b>	<b>HIGH HAZARD</b>
70% of homes have improved survivable space around property, reduced ignition risk, hardened homes, and no ladder fuels.	30-70% homes have improved survivable space around property and well-maintained landscapes.	<30% of homes have defensible space, hardened home features, or Firewise landscaping



**Landowner Actions**

- Low Hazard
- Moderate Hazard
- High Hazard

Planning Awareness Management  
**HWMO**  
Hawaii Wildfire Management Organization

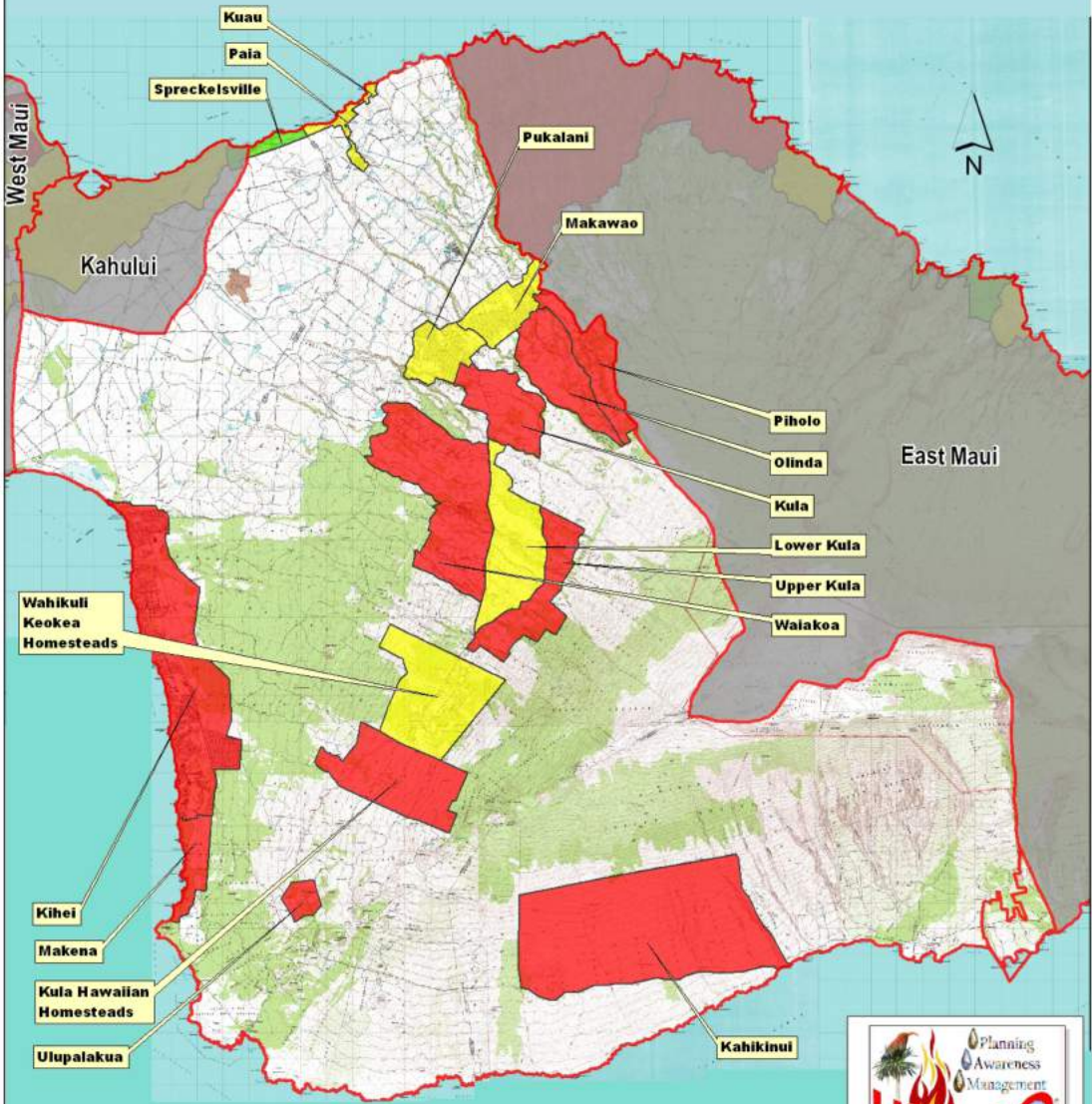
MAUI COUNTY  
COUNTY OF HAWAII



# Central Maui Hazard Assessment

## Subdivision Rating - Proximity of Subdivision to Wildland Areas

PROXIMITY TO WILDLAND AREAS		
LOW HAZARD	MODERATE HAZARD	HIGH HAZARD
Wildland areas share no borders with the subdivision. Little to no undeveloped and unmaintained vegetated areas within community. Little to no ladder fuels along community boundaries.	Wildland areas adjoin subdivision on 1-2 sides.	Wildland areas surround subdivision on at least 3 sides.



**Wildland Proximity**

- Low Hazard
- Moderate Hazard
- High Hazard

Planning Awareness Management  
**HWMO**  
Hawaii Wildfire Management Organization

MAUI COUNTY  
PLANNING AWARENESS MANAGEMENT  
HAWAII

# Building Rating

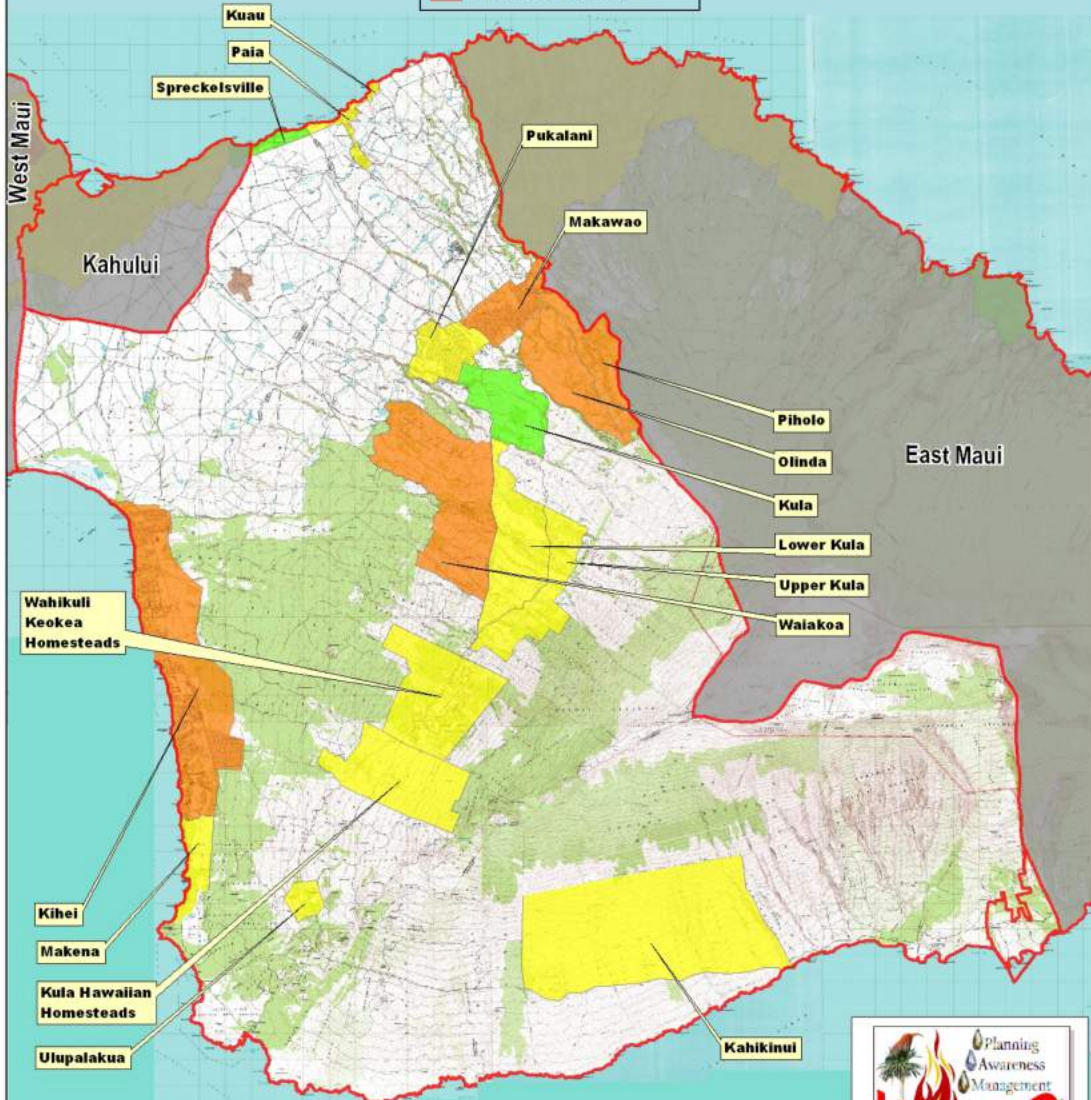
## HWMO Wildfire Hazard Assessment Key

<b>Building Hazard Rating</b>			
<b>Rating Element</b>	<b>Low (1)</b>	<b>Moderate (2)</b>	<b>High (3)</b>
<b>Roofing Assembly</b>	Greater than 75% of homes have Class A roofs (metal, asphalt, or fiberglass roofing material).	50-75% have Class A roofing.	Less than 50% of homes have Class A roofing.
<b>Siding/ Soffits</b>	Greater than 75% of homes have fire resistant siding and soffits.	50-75% of homes have fire resistant siding and soffits.	Less than 50% of homes have fire resistant siding and soffits.
<b>Under-skirting around decks, lanais, post-and-pier structures.</b>	Greater than 75% of homes have the equivalent of fine non-combustible mesh screening to protect underneath from flying embers and ignition	50-75% of homes have the equivalent of fine non-combustible mesh screening	Less than 50% of homes have the equivalent of fine non-combustible mesh screening
<b>Utilities Placement- Gas and Electric</b>	All underground or none.	One underground, one above ground.	Both above ground.
<b>Structural Ignitability</b>	Greater than 75% or houses are spaced with cleared boundaries. Flammables and combustible materials stored according to fire-safe principles.	50-75% of homes store combustibles properly.	Less than 50% of homes store combustibles properly. Houses close to each other.

# Central Maui Hazard Assessment

## Building Rating Total

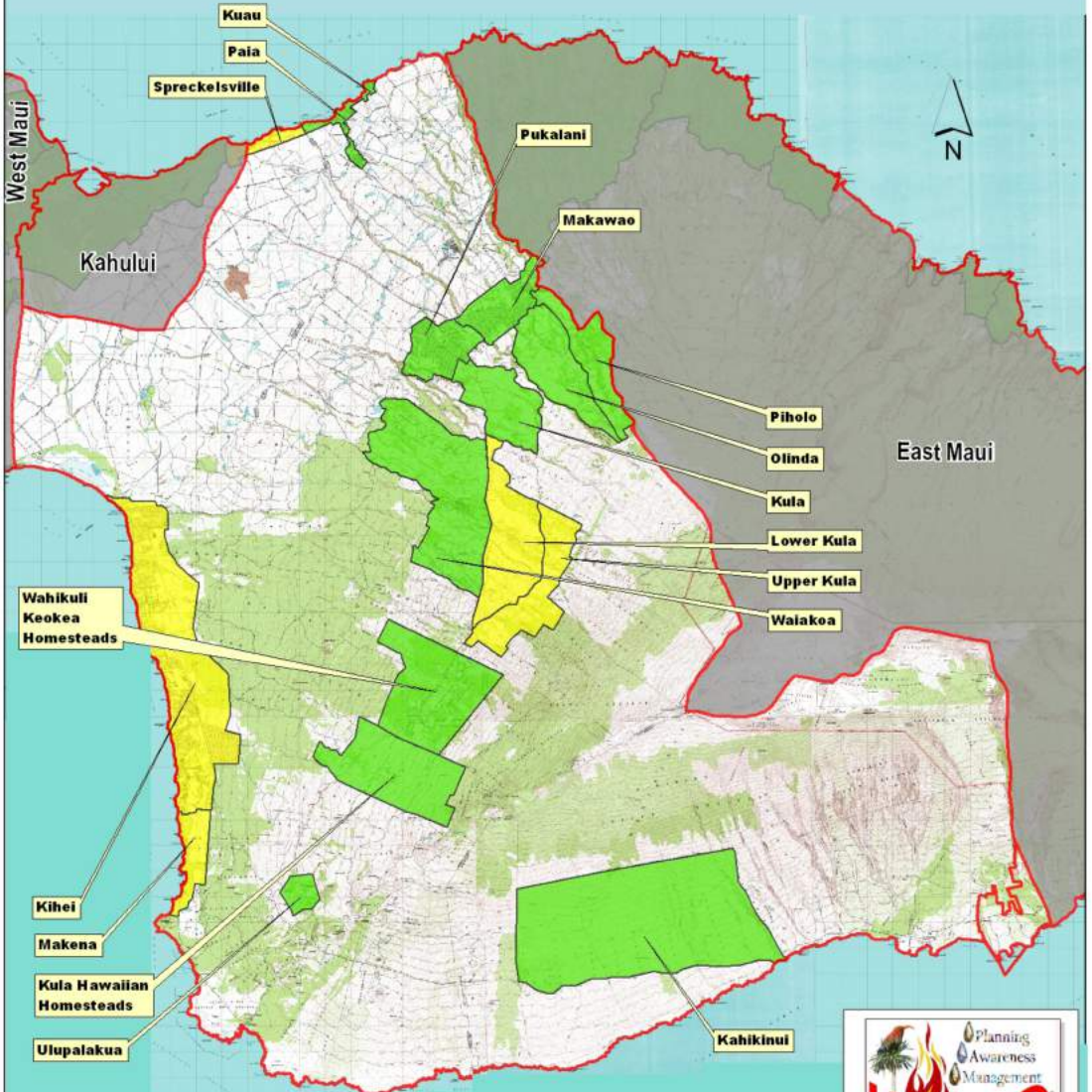
## Building Hazard Total



# Central Maui Hazard Assessment

## Building Rating - Roofing Assembly

ROOFING ASSEMBLY		
<b>LOW HAZARD</b>	<b>MODERATE HAZARD</b>	<b>HIGH HAZARD</b>
Greater than 75% of homes have Class A roofs (metal, asphalt, or fiberglass roofing material).	50-75% have Class A roofing.	Less than 50% of homes have Class A roofing.



**Roofing Assembly**

- Low Hazard**
- Moderate Hazard**
- High Hazard**

Planning Awareness Management  
**HWMO**  
Hawaii Wildfire Management Organization

# Central Maui Hazard Assessment

## Building Rating - Siding/Soffits

### SIDING AND SOFFITS

#### LOW HAZARD

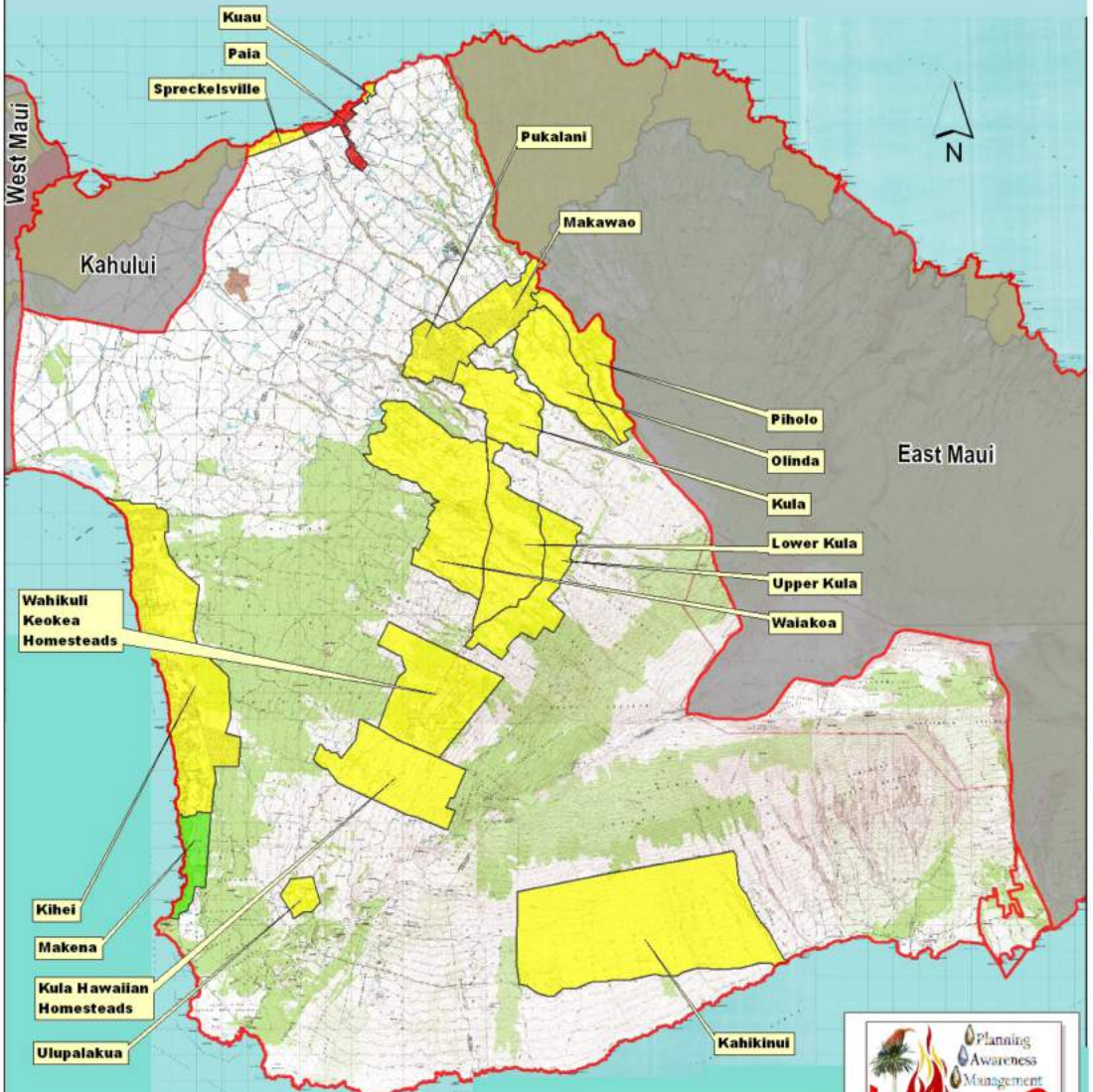
Greater than 75% of homes have fire resistant siding and soffits.

#### MODERATE HAZARD

50-75% of homes have fire resistant siding and soffits.

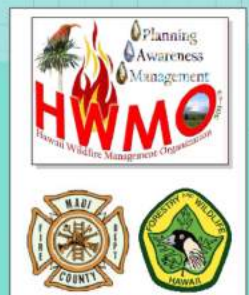
#### HIGH HAZARD

Less than 50% of homes have fire resistant siding and soffits.



### Siding/Soffits

- Low Hazard
- Moderate Hazard
- High Hazard

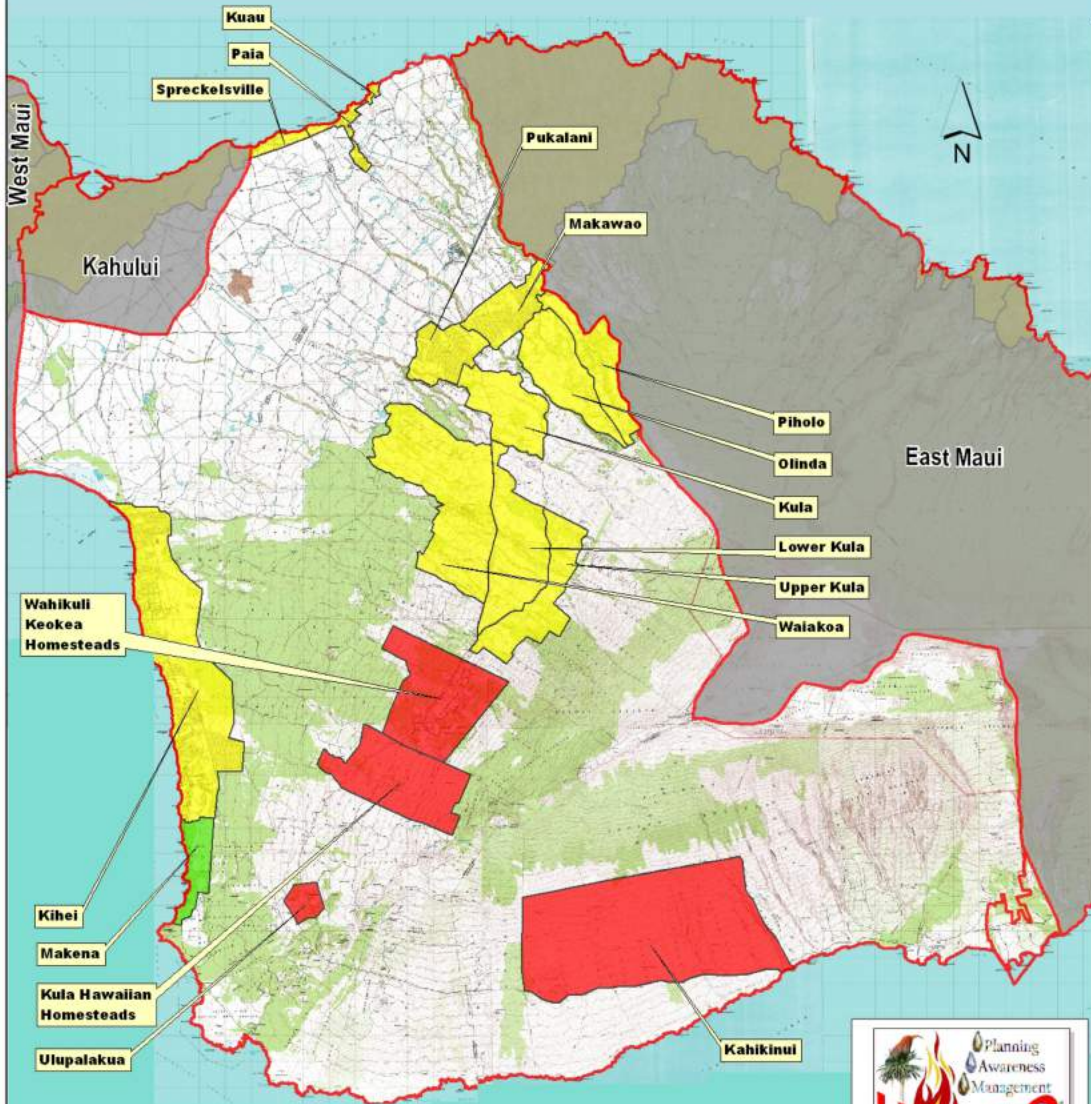


# Central Maui Hazard Assessment

## Building Rating - Underskirting Around Decks, Lanais, Post & Pier Structures

### UNDERSKIRTING AROUND DECKS/ POST-AND-PIER STRUCTURES

LOW HAZARD	MODERATE HAZARD	HIGH HAZARD
Greater than 75% of homes have the equivalent of fine non-combustible mesh screening to protect underneath from flying embers and ignition.	50-75% of homes have the equivalent of fine non-combustible mesh screening.	Less than 50% of homes have the equivalent of fine non-combustible mesh screening.



**Underskirting**

- Low Hazard**
- Moderate Hazard**
- High Hazard**

Planning Awareness Management  
**HWMO**  
 Hawaii Wildfire Management Organization

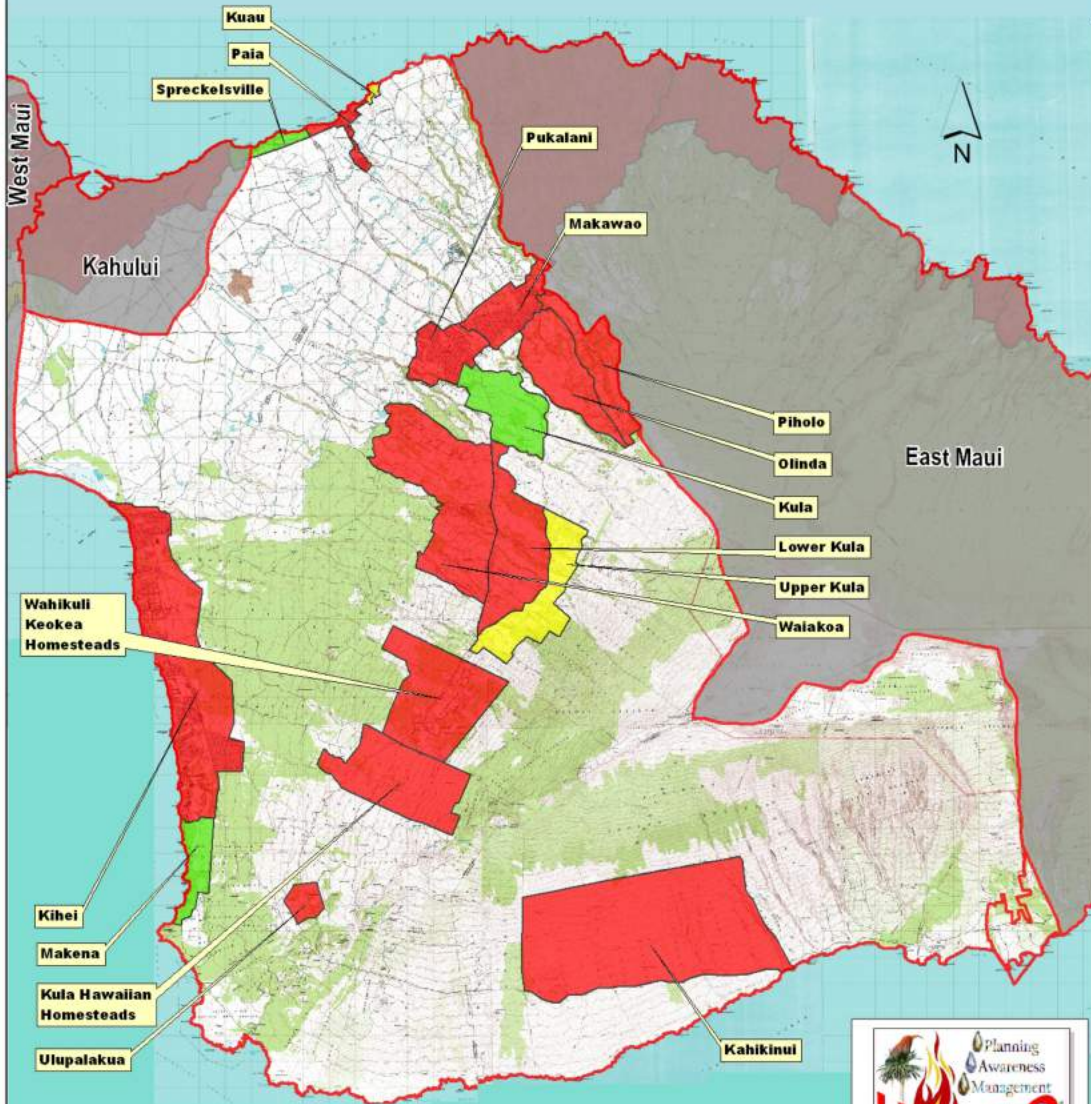
MAUI COUNTY  
 HAWAII COUNTY

# Central Maui Hazard Assessment

Building Rating - Utilities Placement; Gas & Electric

## UTILITIES PLACEMENT- GAS AND ELECTRIC

LOW HAZARD	MODERATE HAZARD	HIGH HAZARD
All underground or none.	One underground, one above ground.	Both above ground.



**Utilities Placement**

- Low Hazard
- Moderate Hazard
- High Hazard

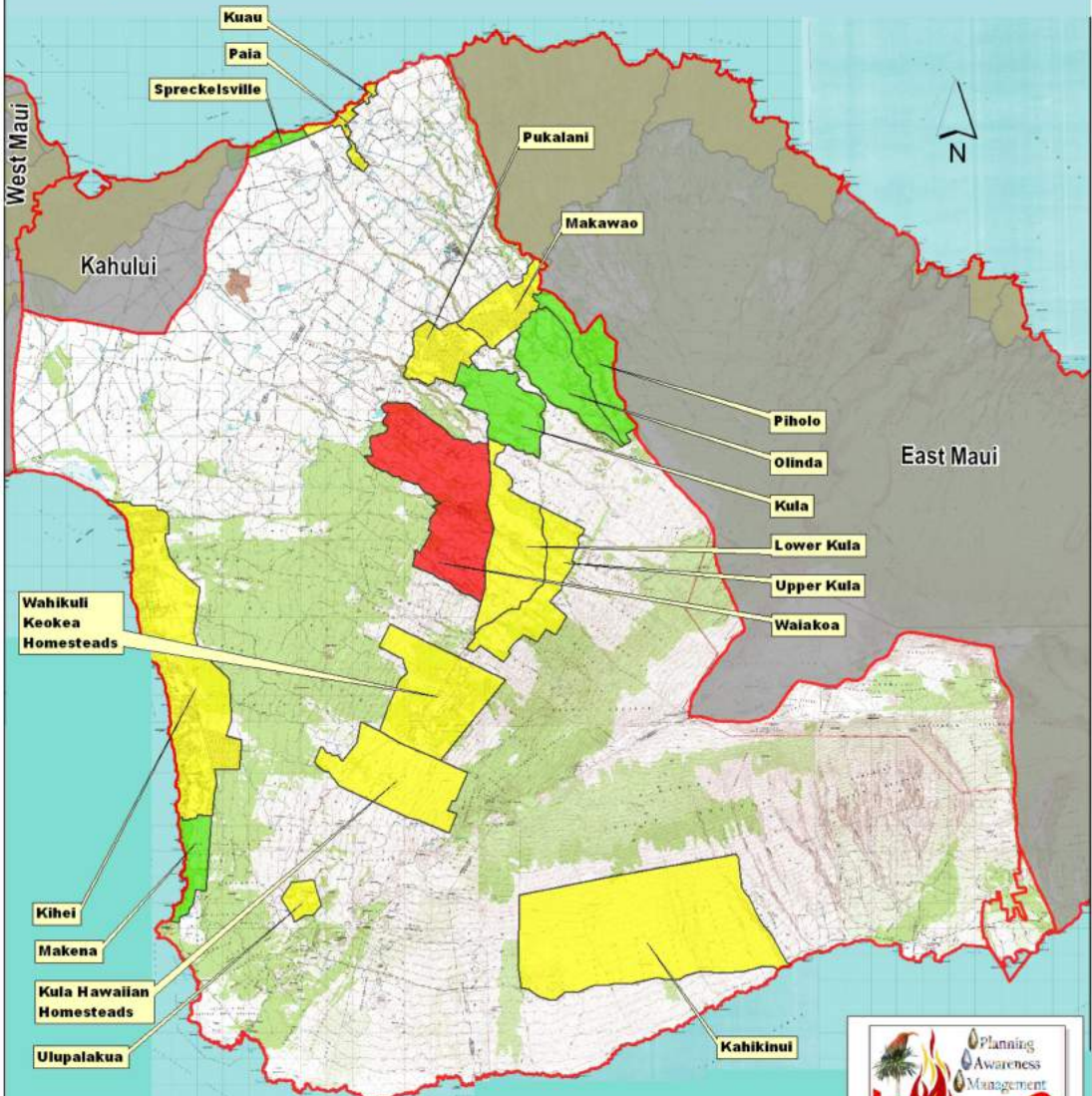




# Central Maui Hazard Assessment

## Building Rating - Structural Ignitability

STRUCTURAL IGNITABILITY		
<b>LOW HAZARD</b>	<b>MODERATE HAZARD</b>	<b>HIGH HAZARD</b>
Greater than 75% of houses are spaced with cleared boundaries. Flammables and combustible materials stored according to fire-safe principles.	50-75% of homes store combustibles properly.	Less than 50% of homes store combustibles properly. Houses close to each other.



**Structural Ignitability**

- Low Hazard**
- Moderate Hazard**
- High Hazard**

Planning Awareness Management  
**HWMO**  
Hawaii Wildfire Management Organization

# Vegetation Rating

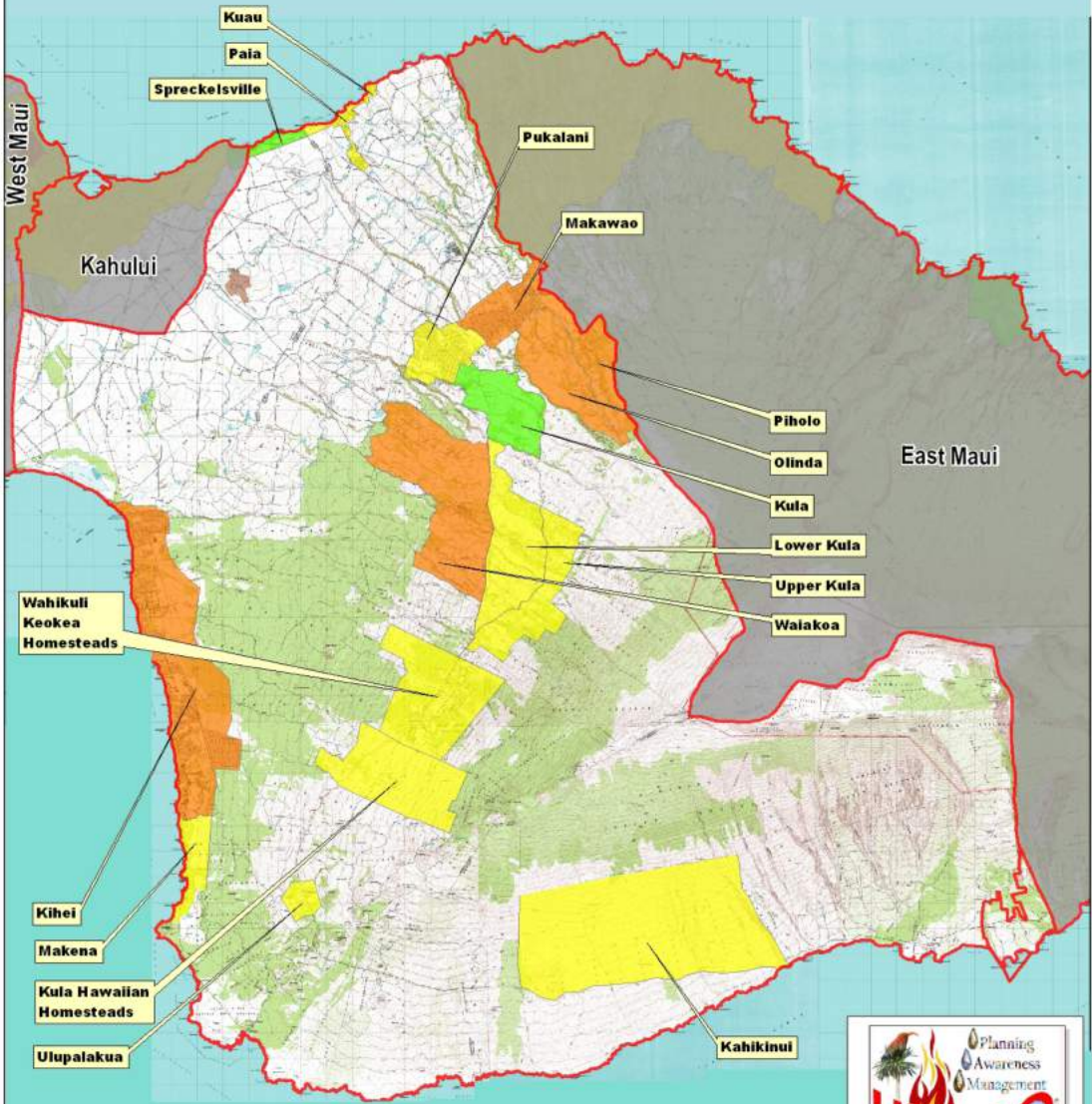
## HWMO Wildfire Hazard Assessment Key

<b>Vegetation Hazard Rating</b>			
<b>Rating Element</b>	<b>Low (1)</b>	<b>Moderate (2)</b>	<b>High (3)</b>
<b>Proximity of flammable fuels around subdivision</b>	Greater than 100'	40-100'	Less than 40'
<b>Type of predominant vegetation within 300' of homes</b>	Grasses less than 6 inches in height. Light leaf litter.	Grasses 6–12 inches in height. Grasses 6-12" tall. Light brush and small trees. Patchy fuels.	Dense grass, brush, timber, and/or hardwoods. Moderate to heavy dead and downed vegetation. Fuels greater than 12 feet tall. Heavy vegetation.
<b>Fuel loading</b>	0-30% cover	31-70% cover	71-100% cover
<b>Fuel structure and arrangement</b>	Non-contiguous or patchwork arrangement. Little to no ladder fuels.		Uninterrupted vegetation, pervasive ladder fuels.
<b>Defensible Space/ Fuels reduction around homes &amp; structures</b>	Vegetation is treated 100 feet or more from structures.	31-100 ft of vegetation treatment from structures.	Less than 30 ft of vegetation treatment from structures.

# Central Maui Hazard Assessment

## Vegetation Rating Total

- No Data
- Low Hazard
- Moderate hazard
- High Hazard
- Extreme Hazard

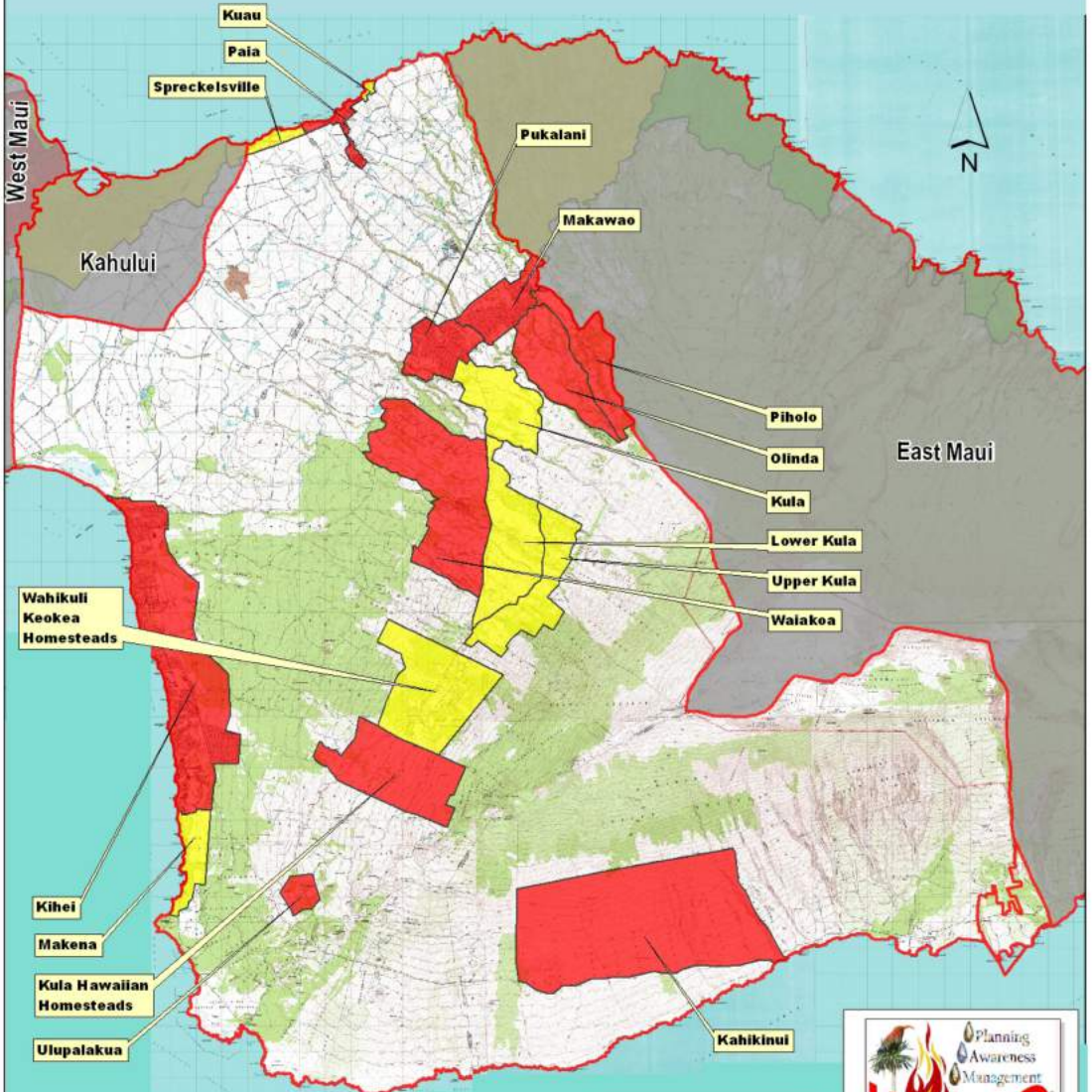


# Central Maui Hazard Assessment

## Vegetation Rating - Proximity of Flammable Fuels Around Subdivision

### PROXIMITY OF FLAMMABLE FUELS AROUND SUBDIVISION

LOW HAZARD	MODERATE HAZARD	HIGH HAZARD
Greater than 100'	40-100'	Less than 40'



**Fuels Proximity**

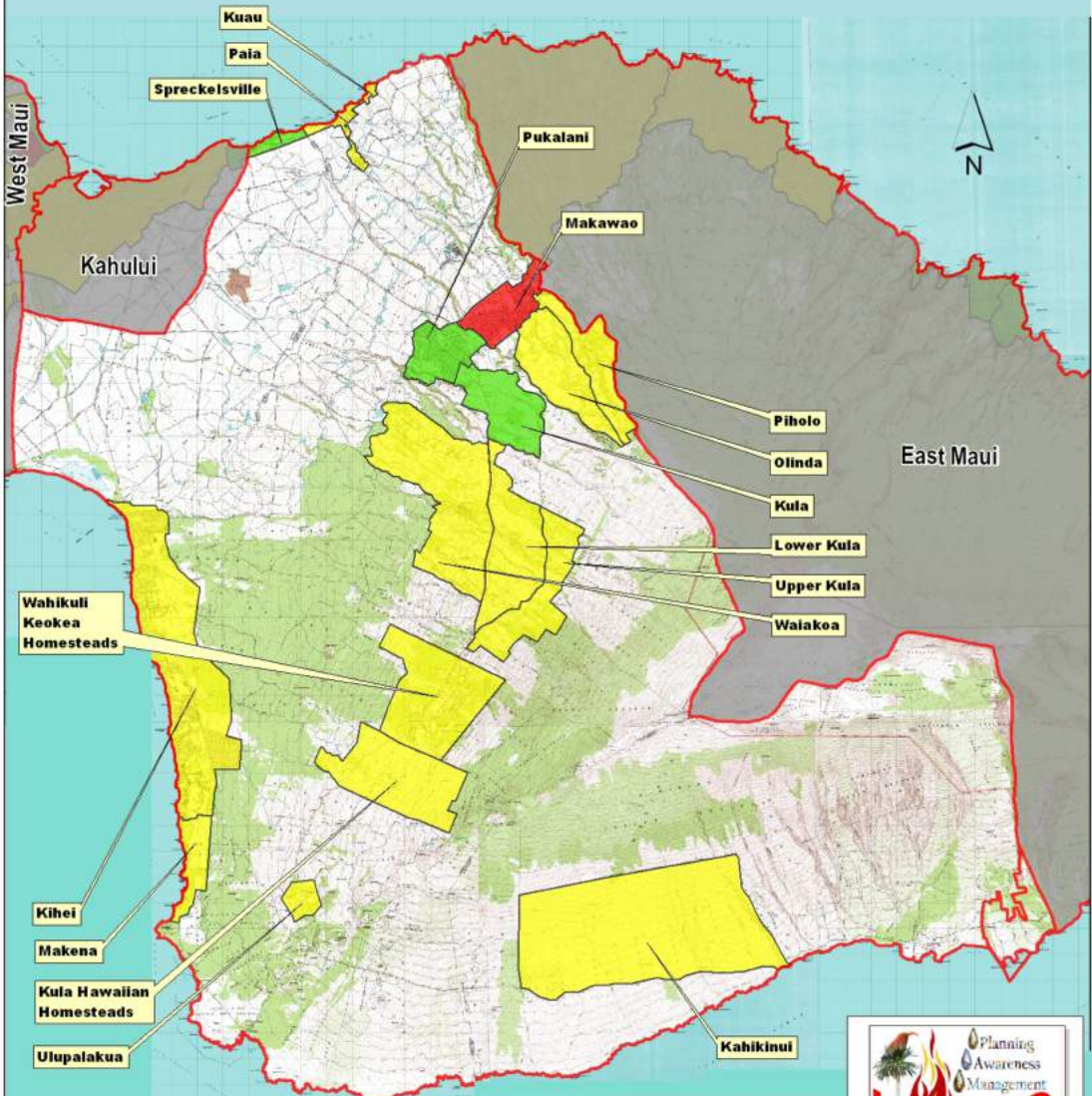
- Low Hazard
- Moderate Hazard
- High Hazard

Planning Awareness Management  
**HWMO**  
 Hawaii Wildfire Management Organization

# Central Maui Hazard Assessment

## Vegetation Rating - Vegetation Within 300' of Homes

VEGETATION TYPE WITHIN 300' OF HOMES		
LOW HAZARD	MODERATE HAZARD	HIGH HAZARD
Grasses less than 6 inches in height. Light leaf litter.	Grasses 6–12 inches in height. Light brush and small trees. Patchy fuels.	Dense grass, brush, timber, and/or hardwoods. Moderate to heavy dead and downed vegetation. Fuels greater than 12 feet tall. Heavy vegetation.



**Vegetation Type**

- Low Hazard
- Moderate Hazard
- High Hazard

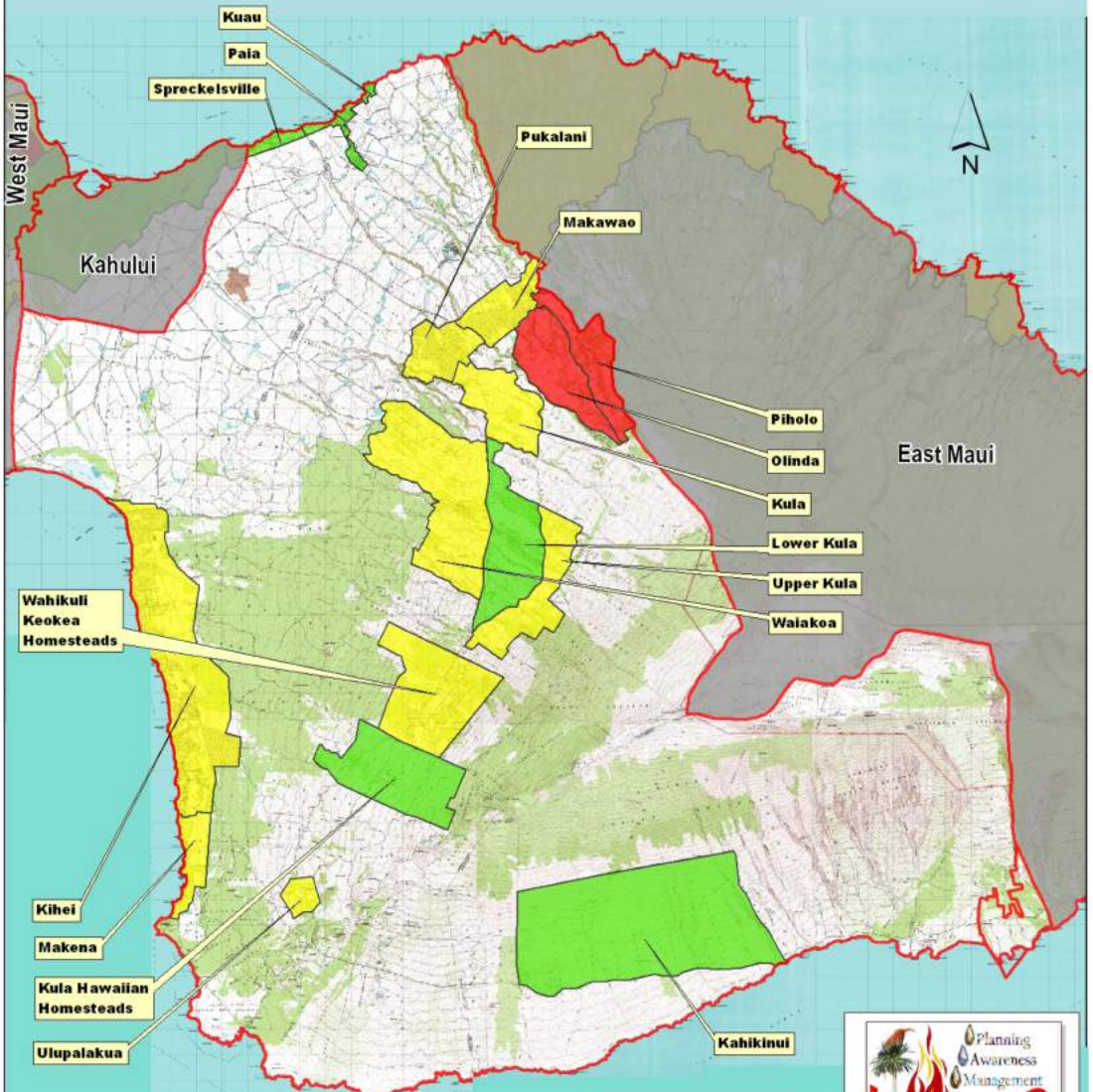
Planning Awareness Management  
**HWMO**  
 Hawaii Wildfire Management Organization

MAUI COUNTY  
 UNIVERSITY OF HAWAII

# Central Maui Hazard Assessment

## Vegetation Rating - Fuel Loading

FUEL LOADING		
<b>LOW HAZARD</b>	<b>MODERATE HAZARD</b>	<b>HIGH HAZARD</b>
0-30% vegetated cover	31-70% vegetated cover	71-100% vegetated cover



**Fuel Loading**

- Low Hazard
- Moderate Hazard
- High Hazard

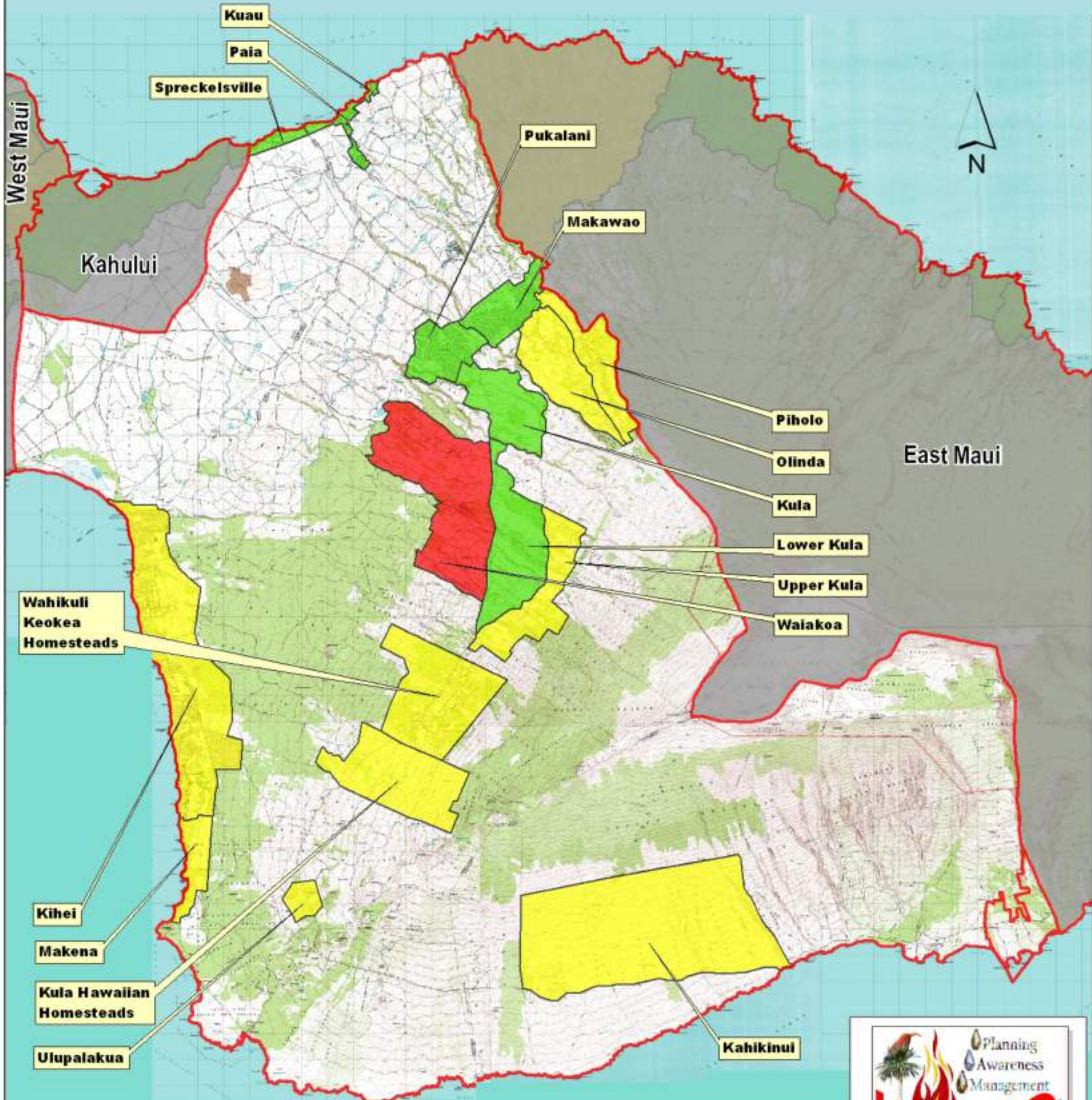
Planning Awareness Management  
**HWMO**  
Hawaii Wildfire Management Organization

MAUI COUNTY  
HAWAII DEPARTMENT OF LAND AND NATURAL RESOURCES

# Central Maui Hazard Assessment

## Vegetation Rating - Fuel Structure & Arrangement

FUEL STRUCTURE AND ARRANGEMENT		
<b>LOW HAZARD</b>	<b>MODERATE HAZARD</b>	<b>HIGH HAZARD</b>
Non-contiguous or patchwork arrangement. Little to no ladder fuels.	Some areas of contiguous vegetation. Few ladder fuels.	Uninterrupted vegetation, pervasive ladder fuels.



**Fuel Structure**

- Low Hazard
- Moderate Hazard
- High Hazard

Planning Awareness Management Organization  
**HWMO**  
 Hawaii Wildfire Management Organization

MAUI COUNTY  
 HAWAII

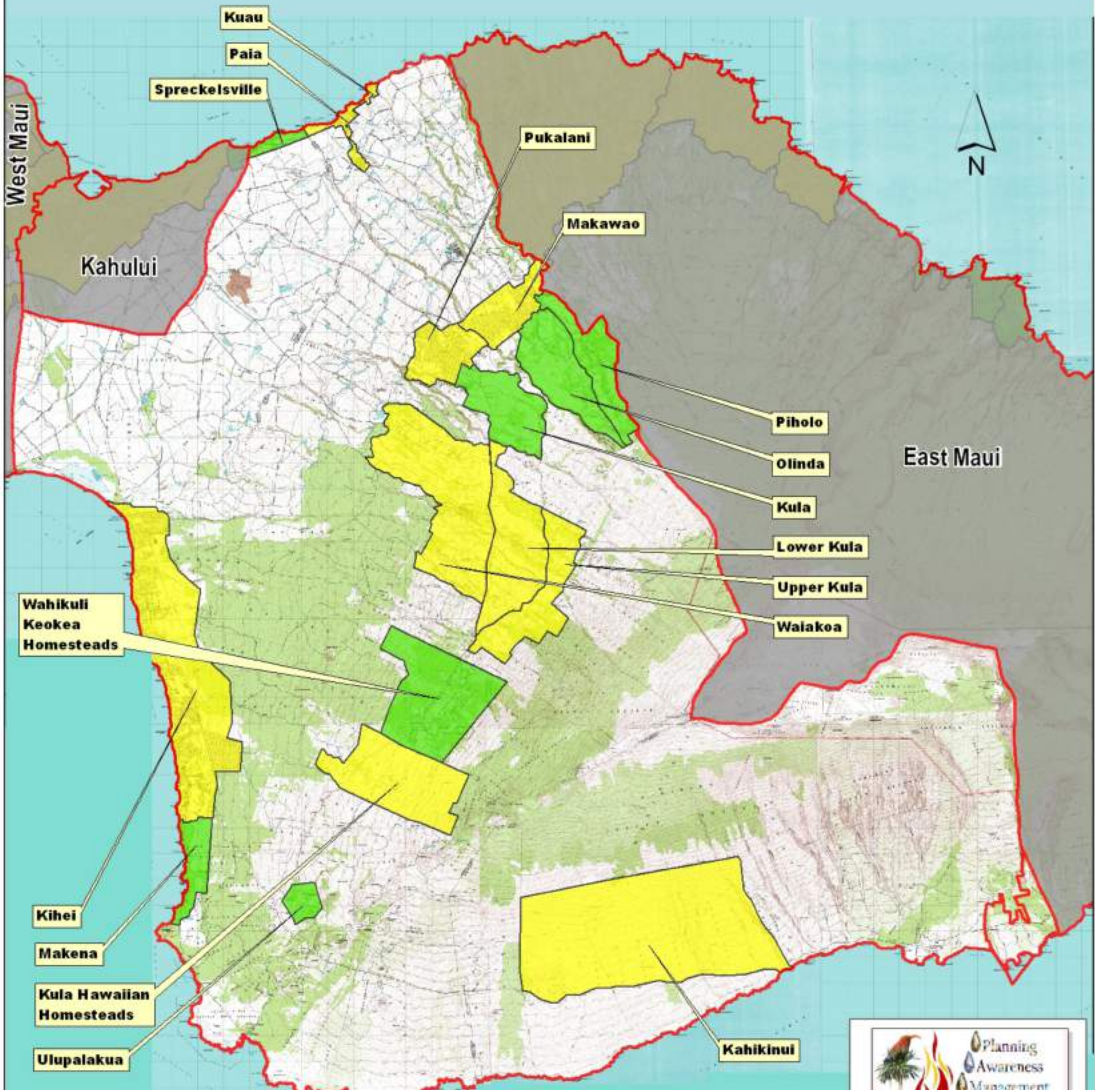


# Central Maui Hazard Assessment

**Vegetation Rating - Defensible Space:  
Fuels Reduction Around Homes & Structures**

## DEFENSIBLE SPACE- FUELS REDUCTION AROUND HOMES

LOW HAZARD	MODERATE HAZARD	HIGH HAZARD
Vegetation is treated 100 feet or more from structures.	31-100 ft. of vegetation treatment from structures.	Less than 30 ft. of vegetation treatment from structures.



**Defensible Space**

- Low Hazard
- Moderate Hazard
- High Hazard

Planning Awareness Management  
**HWMO**  
Hawaii Wildfire Management Organization

MAUI COUNTY  
STATE OF HAWAII

# Fire Protection Rating

## HWMO Wildfire Hazard Assessment Key

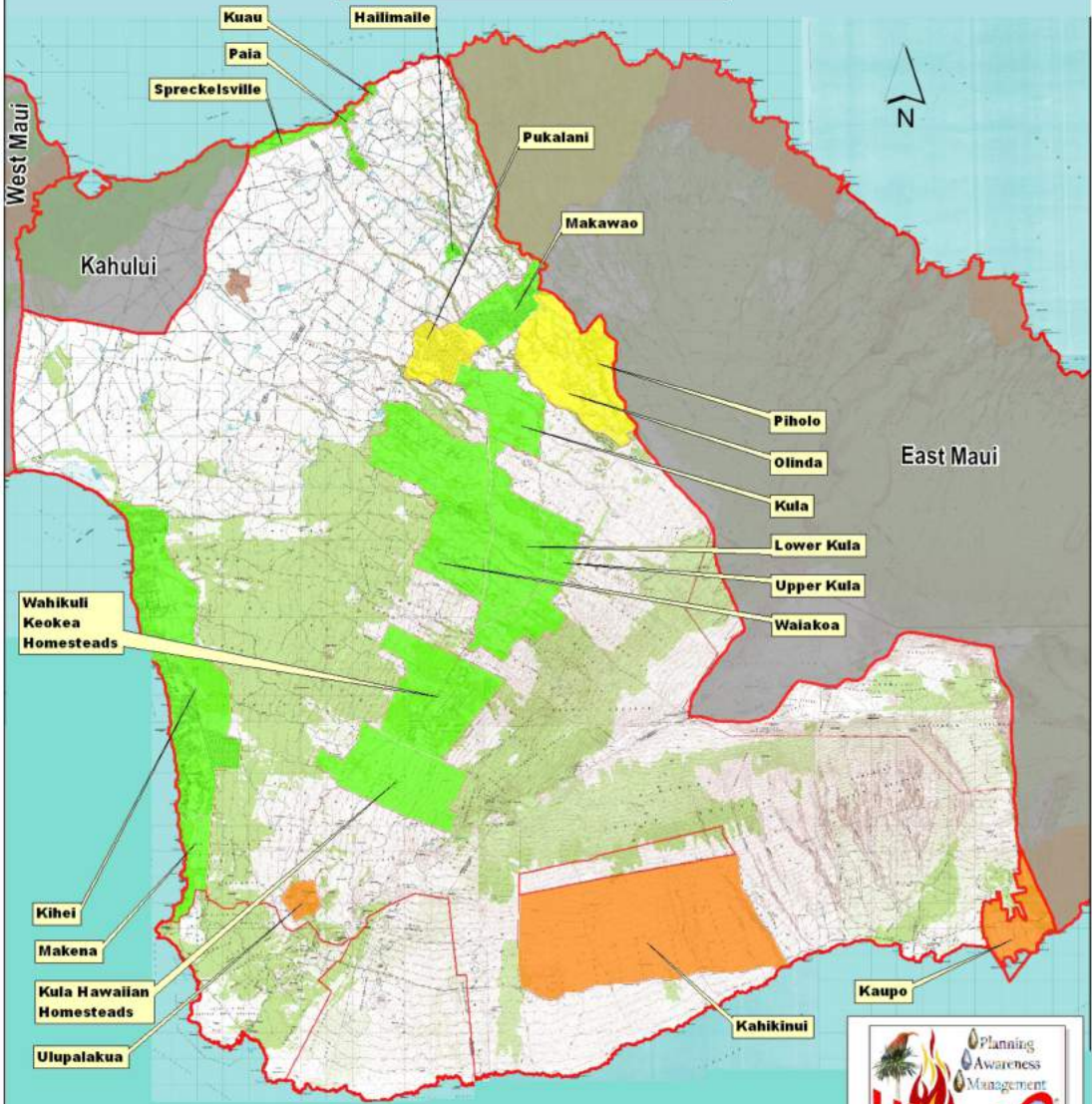
<b>Fire Protection Hazard</b>			
<b>Rating Element</b>	<b>Low (1)</b>	<b>Moderate (2)</b>	<b>High (3)</b>
<b>Water source availability</b>	Pressurized water source availability. 500 GPM less than 1000 ft spacing.	Non-pressurized water source availability (offsite or draft location) or dipsite. Homes on catchment water have fire-hose hookups.	Water unavailable, or offsite water more than 20 minute roundtrip
<b>Response time</b>	Within 15 minutes	16-30 minutes	Greater than 30 minutes
<b>Proximity to fire station</b>	Less than 5 miles	6-10 miles	More than 10 miles
<b>Fire department structural training and expertise</b>	Large fully paid fire department with personnel that meet NFPA or NWCG training requirements and have adequate equipment.	Mixed fire department. Some paid and some volunteer personnel. Limited experience, training, and equipment to fight fire.	Small, all volunteer fire department. Limited training, experience, and budget with regular turnover of personnel. Do not meet NFPA or NWCG standards.
<b>Wildland firefighting capability of initial response agency</b>	Sufficient personnel, equipment, and wildland firefighting capability and experience. Good supply of structural and wildland fire apparatus and misc specialty equipment	Limited personnel, and or equipment but with some wildland firefighting expertise and training. Smaller supply of fire apparatus in fairly good repair with some specialty equipment.	Fire department non-existent or untrained/unequipped to fight wildland fire. Minimum amount of fire apparatus, which is old and in need of repair. None or little specialty equipment.
<b>Interagency Cooperation</b>	Mutual aid agreements and resources available to deploy.	Mutual aid agreements but limited resource availability.	No mutual aid agreements.
<b>Local emergency operations group or other similar</b>	Active EOG or CERT. Evacuation plan in place.	Limited participation in EOG or similar. Have some form of evacuation process.	EOG or CERT team, etc. organized and active, prepared for evacuation processes
<b>Community planning practices and ordinances</b>	County/local laws, zoning ordinances, and codes require use of fire safe residential and subdivision designs. Fire department actively participates in planning process and enforces ordinances. Residents are compliant.	Have voluntary ordinances for fire safe practices. Local officials have an understanding of appropriate wildfire mitigation strategies. Fire department has limited input to fire safe planning and development efforts and limited enforcement. Residents are mostly compliant.	No local codes, laws, or ordinances requiring fire safe building or practices. Community standards for fire safe development and protection are marginal or non-existent. Little to no effort has been made in assessing and applying measures to reduce wildfire impact. Ordinances are not enforced and/or residents are not compliant.
<b>Community fire-safe efforts and programs already in place</b>	Organized and active groups provide educational materials and programs throughout the community.	Limited provision of or interest in educational efforts. Fire Department or local group does some limited prevention and public education.	No interest or participation in educational programs. No prevention education by local fire department.

# Central Maui Hazard Assessment

Fire Protection Rating Total

Fire Protection Hazard Total

- No Data
- Low Hazard
- Moderate hazard
- High Hazard
- Extreme Hazard



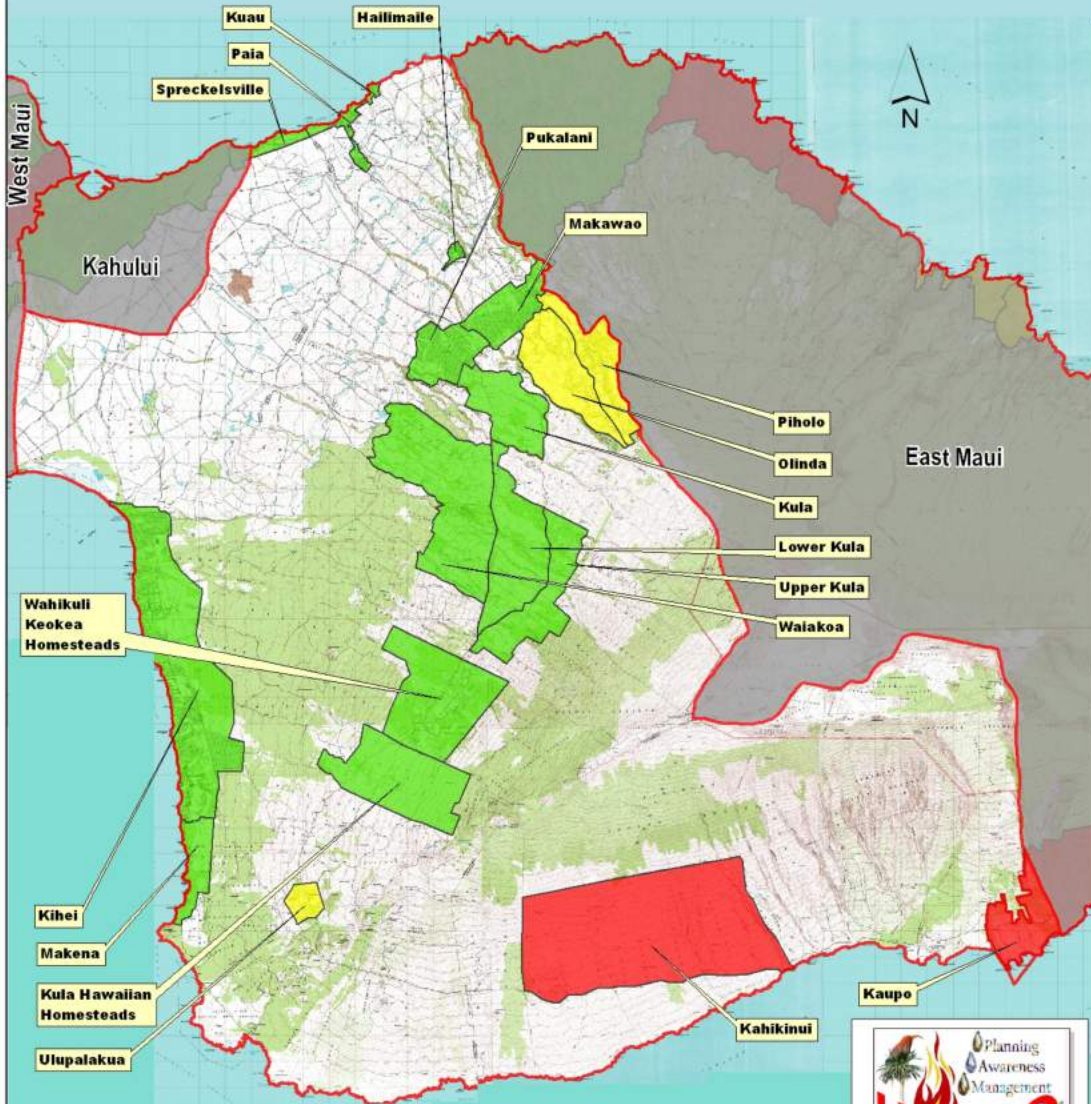
Planning Awareness Management  
**HWMO**  
Hawaii Wildfire Management Organization

# Central Maui Hazard Assessment

## Fire Protection Rating - Water Source Availability

### WATER SOURCE AVAILABILITY

LOW HAZARD	MODERATE HAZARD	HIGH HAZARD
Pressurized water source availability. 500 GPM less than 1000 ft spacing.	Non-pressurized water source availability (offsite or draft location) or dip site. Homes on catchment water have fire-hose hookups.	Water unavailable, or offsite water more than 20 minute roundtrip.



**Water Source**

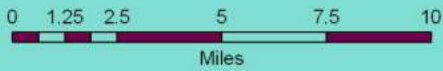
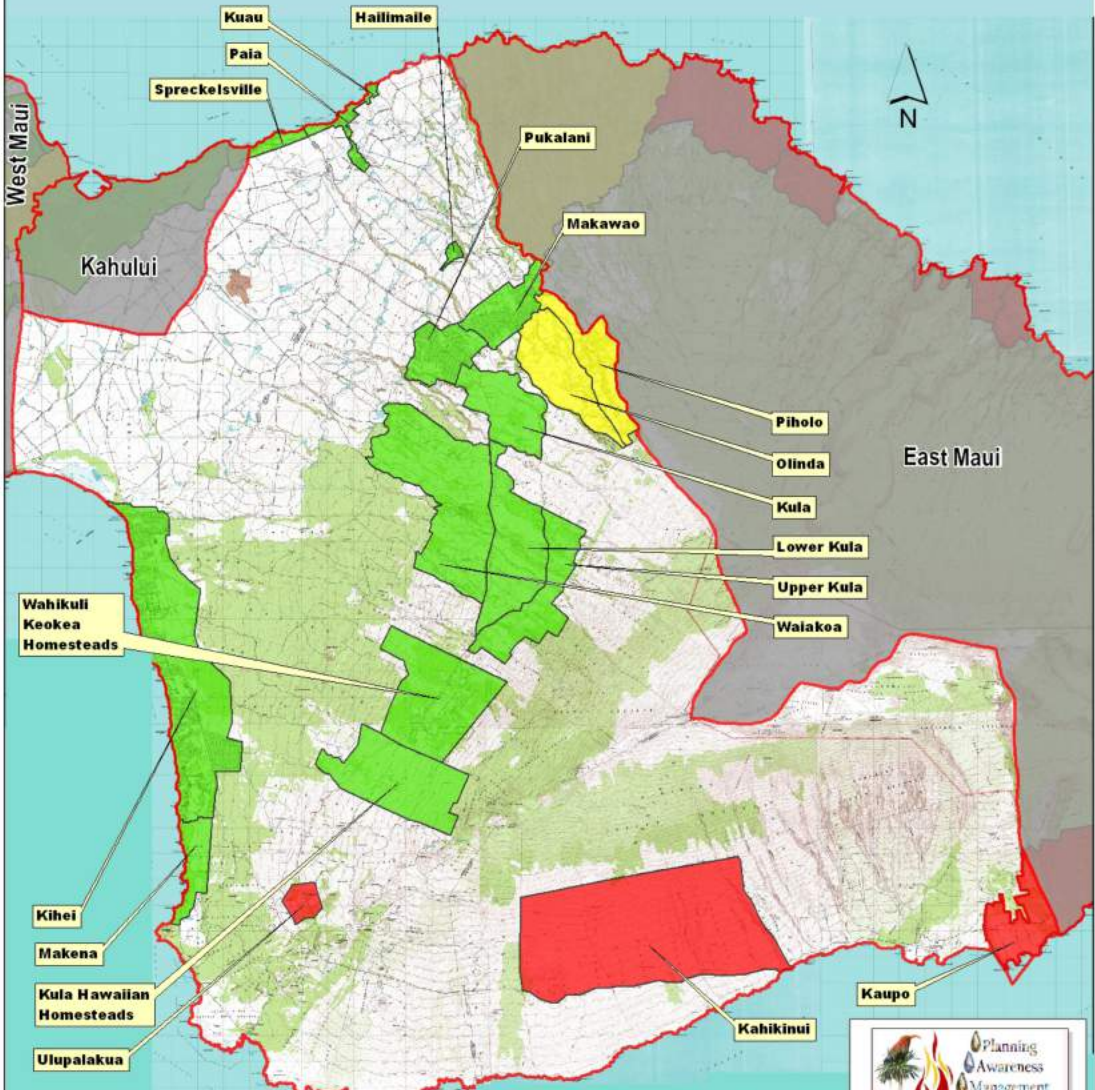
- Low Hazard
- Moderate Hazard
- High Hazard



# Central Maui Hazard Assessment

## Fire Protection Rating - Response Time

RESPONSE TIME		
LOW HAZARD	MODERATE HAZARD	HIGH HAZARD
Within 15 minutes	16-30 minutes	Greater than 30 minutes



**Response Time**

- Low Hazard
- Moderate Hazard
- High Hazard

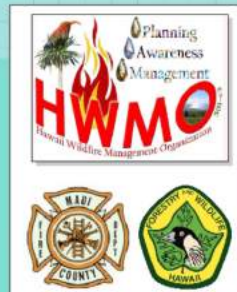
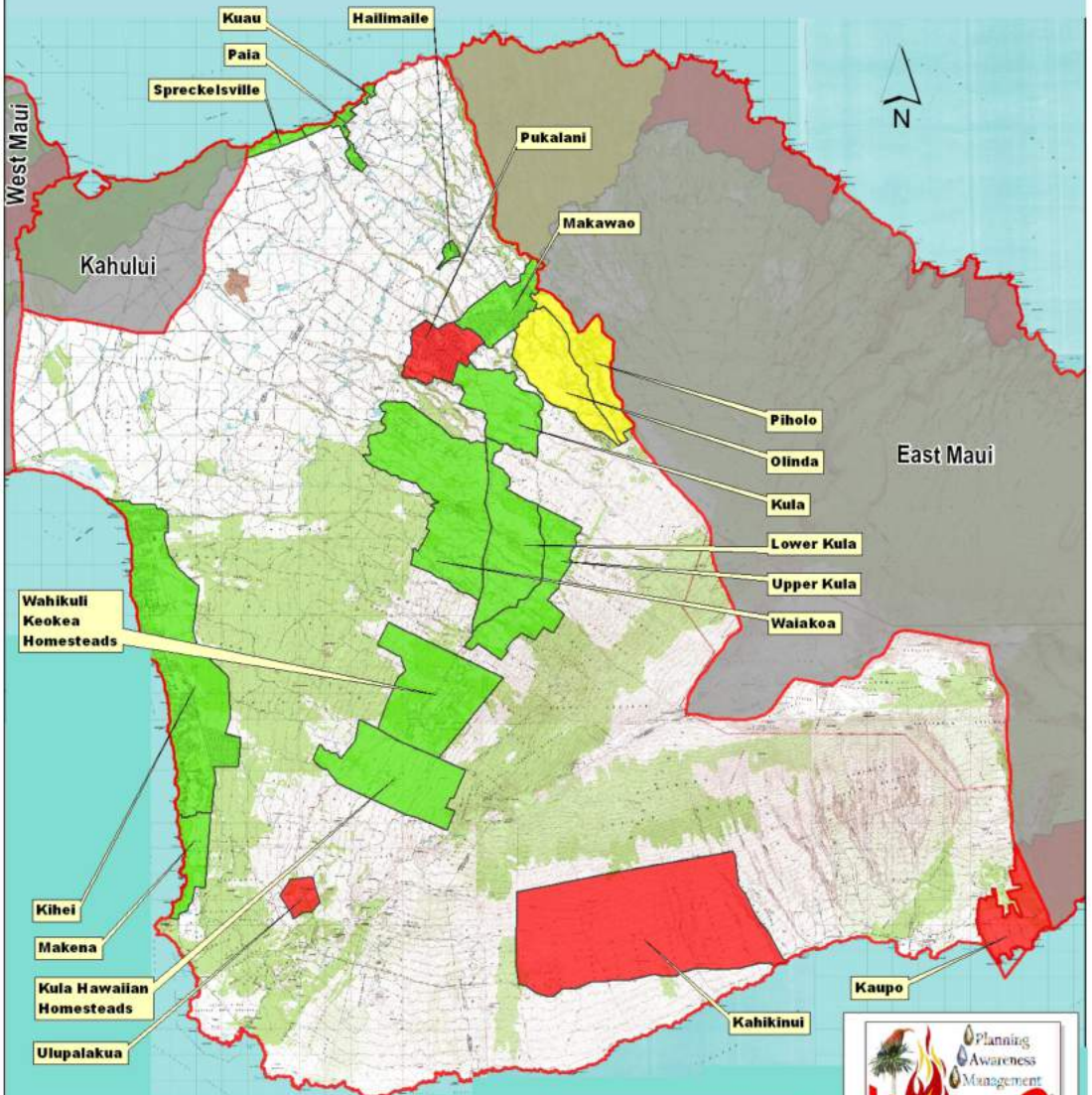
Planning Awareness Management  
**HWMO**  
Hawaii Wildfire Management Organization

# Central Maui Hazard Assessment

## Fire Protection Rating - Proximity to Fire Station

### PROXIMITY TO FIRE STATION

LOW HAZARD	MODERATE HAZARD	HIGH HAZARD
Less than 5 miles	6-10 miles	More than 10 miles

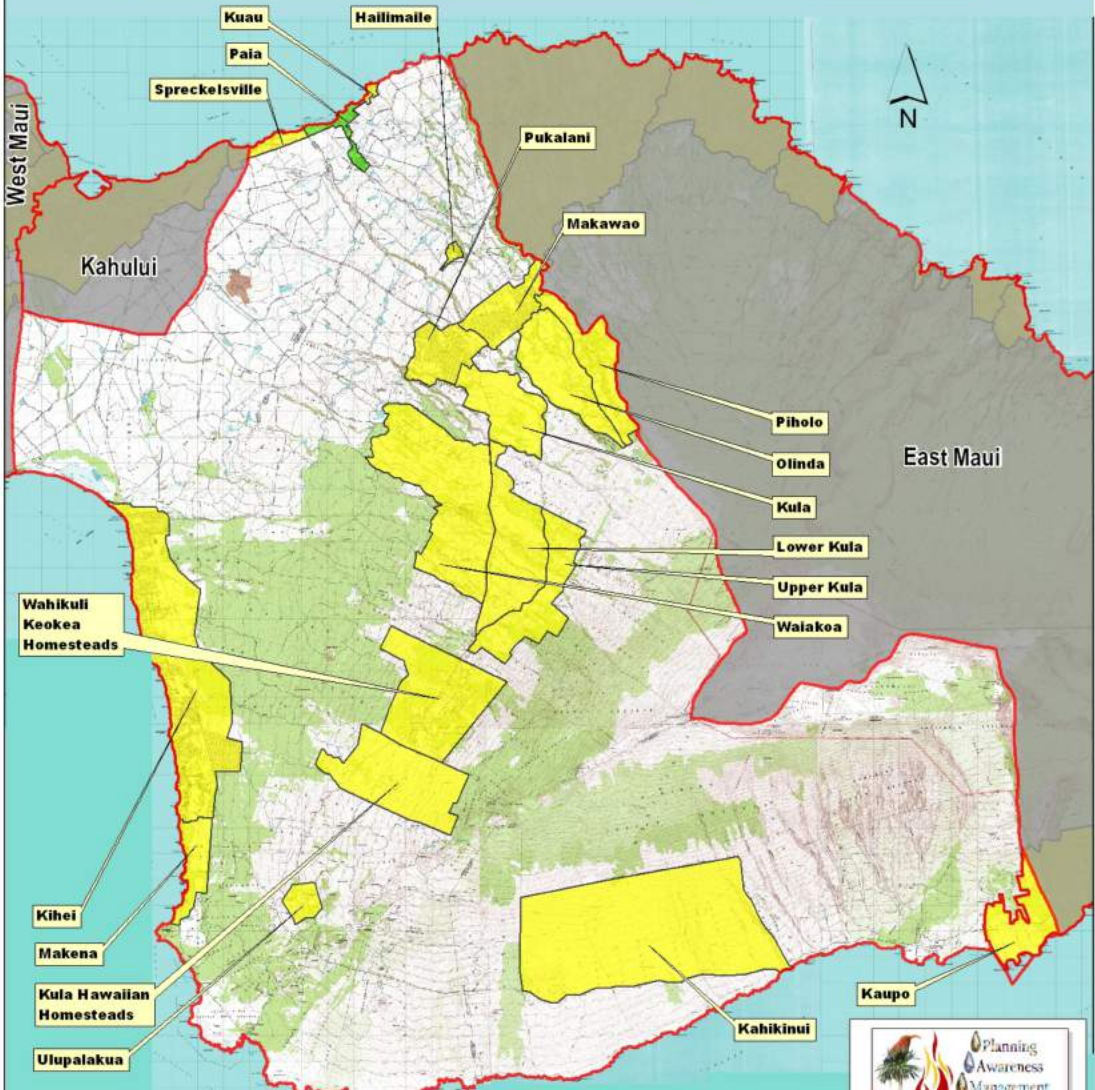


# Central Maui Hazard Assessment

## Fire Protection Rating - Fire Department Structural Training & Expertise

### FIRE DEPARTMENT STRUCTURAL TRAINING AND EXPERTISE

LOW HAZARD	MODERATE HAZARD	HIGH HAZARD
Large fully paid fire department with personnel that meet NFPA or NWCG training requirements and have adequate equipment.	Mixed fire department. Some paid and some volunteer personnel. Limited experience, training, and equipment to fight fire.	Small, all volunteer fire department. Limited training, experience, and budget with regular turnover of personnel. Do not meet NFPA or NWCG standards.



**Structural Training**

- Low Hazard
- Moderate Hazard
- High Hazard



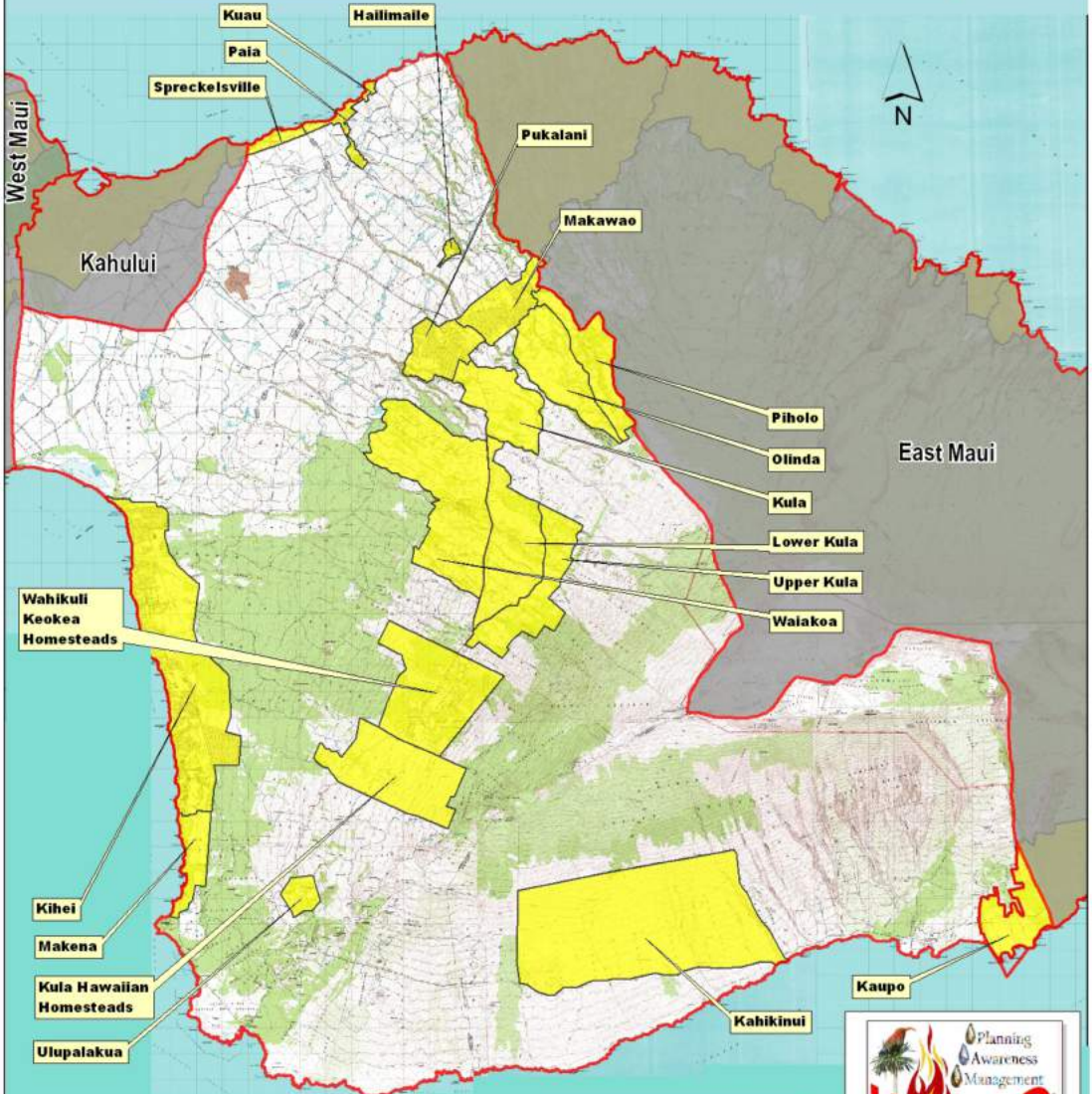


# Central Maui Hazard Assessment

## Fire Protection Rating - Wildland Firefighting Capacity of Initial Response Agency

### WILDLAND FIREFIGHTING CAPACITY OF INITIAL RESPONSE AGENCY

LOW HAZARD	MODERATE HAZARD	HIGH HAZARD
Sufficient personnel, equipment, and wildland firefighting capability and experience. Good supply of structural and wildland fire apparatus and misc specialty equipment	Limited personnel, and or equipment but with some wildland firefighting expertise and training. Smaller supply of fire apparatus in fairly good repair with some specialty equipment.	Fire department non-existent or untrained/unequipped to fight wildland fire. Minimum amount of fire apparatus, which is old and in need of repair. None or little specialty equipment.



**Wildland Capacity**

- Low Hazard
- Moderate Hazard
- High Hazard

Planning Awareness Management  
**HWMO**  
 Hawaii Wildfire Management Organization

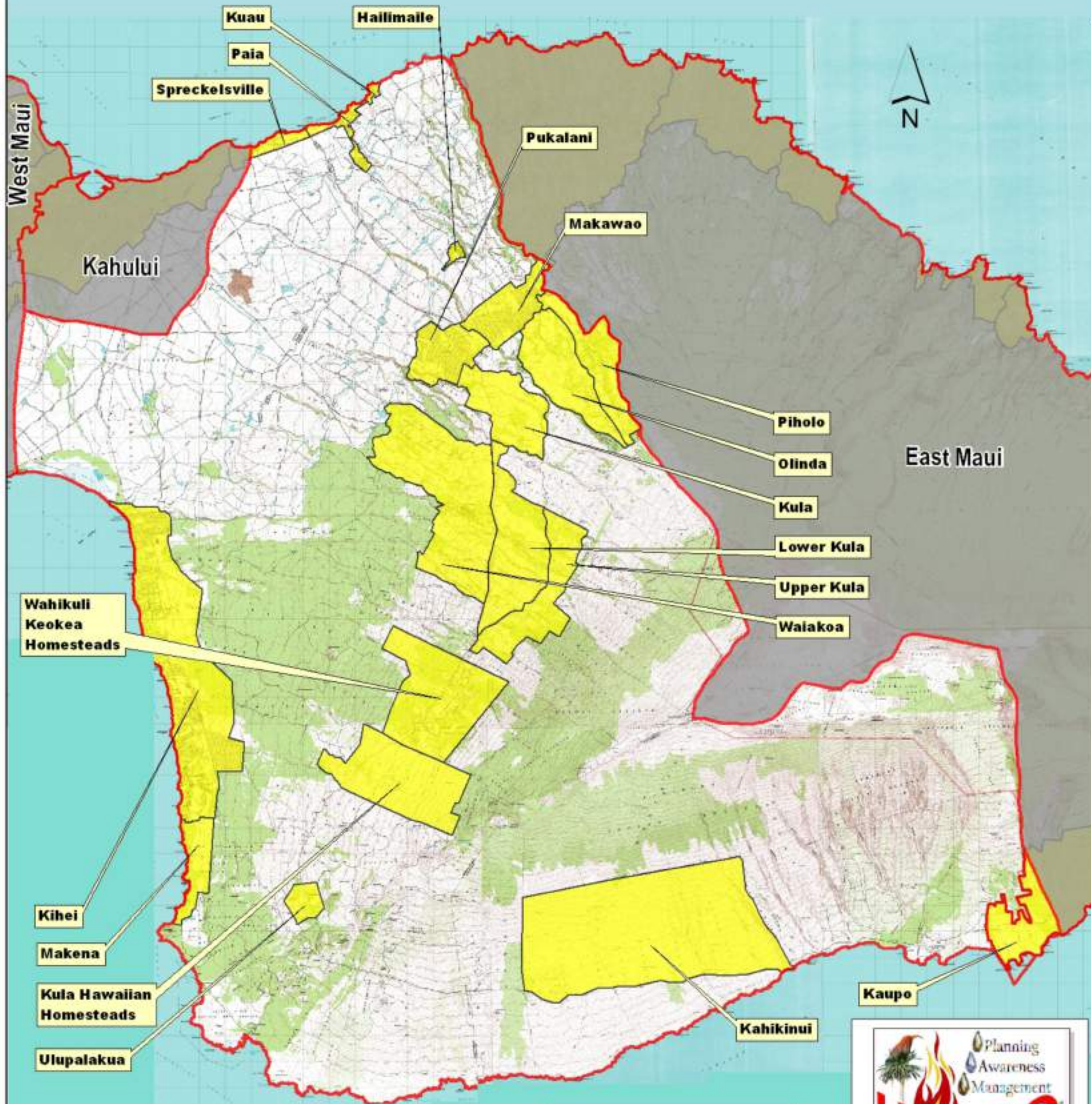


# Central Maui Hazard Assessment

Fire Protection Rating - Local Emergency Operations Group or Citizen Group

## CITIZEN OR LOCAL EMERGENCY OPERATIONS GROUP

LOW HAZARD	MODERATE HAZARD	HIGH HAZARD
Active EOG or CERT. Evacuation plan in place.	Limited participation in EOG or similar. Have some form of evacuation process.	EOG or CERT team, etc. organized and active, prepared for evacuation processes



**Citizen Group**

- Low Hazard
- Moderate Hazard
- High Hazard

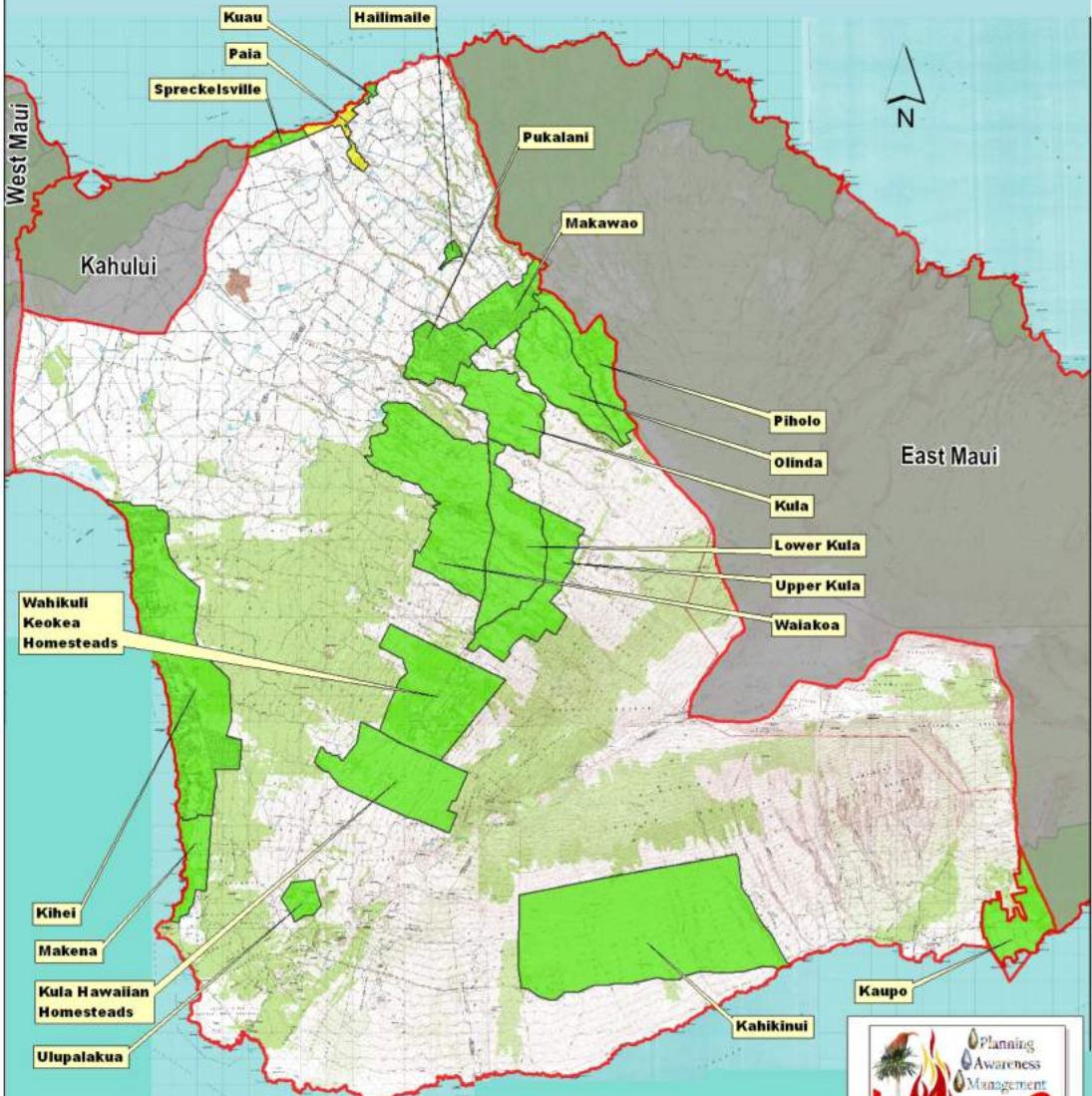


# Central Maui Hazard Assessment

## Fire Protection Rating - Community Planning Practices & Ordinances

### COMMUNITY PLANNING PRACTICES AND ORDINANCES

LOW HAZARD	MODERATE HAZARD	HIGH HAZARD
County/local laws, zoning ordinances, and codes require use of fire safe residential and subdivision designs. Fire department actively participates in planning process and enforces ordinances. Residents are compliant.	Have voluntary ordinances for fire safe practices. Local officials have an understanding of appropriate wildfire mitigation strategies. Fire department has limited input to fire safe planning and development efforts and limited enforcement. Residents are mostly compliant.	No local codes, laws, or ordinances requiring fire safe building or practices. Community standards for fire safe development and protection are marginal or non-existent. Little to no effort has been made in assessing and applying measures to reduce wildfire impact. Ordinances are not enforced and/or residents are not compliant.



**Community Planning**

- Low Hazard
- Moderate Hazard
- High Hazard

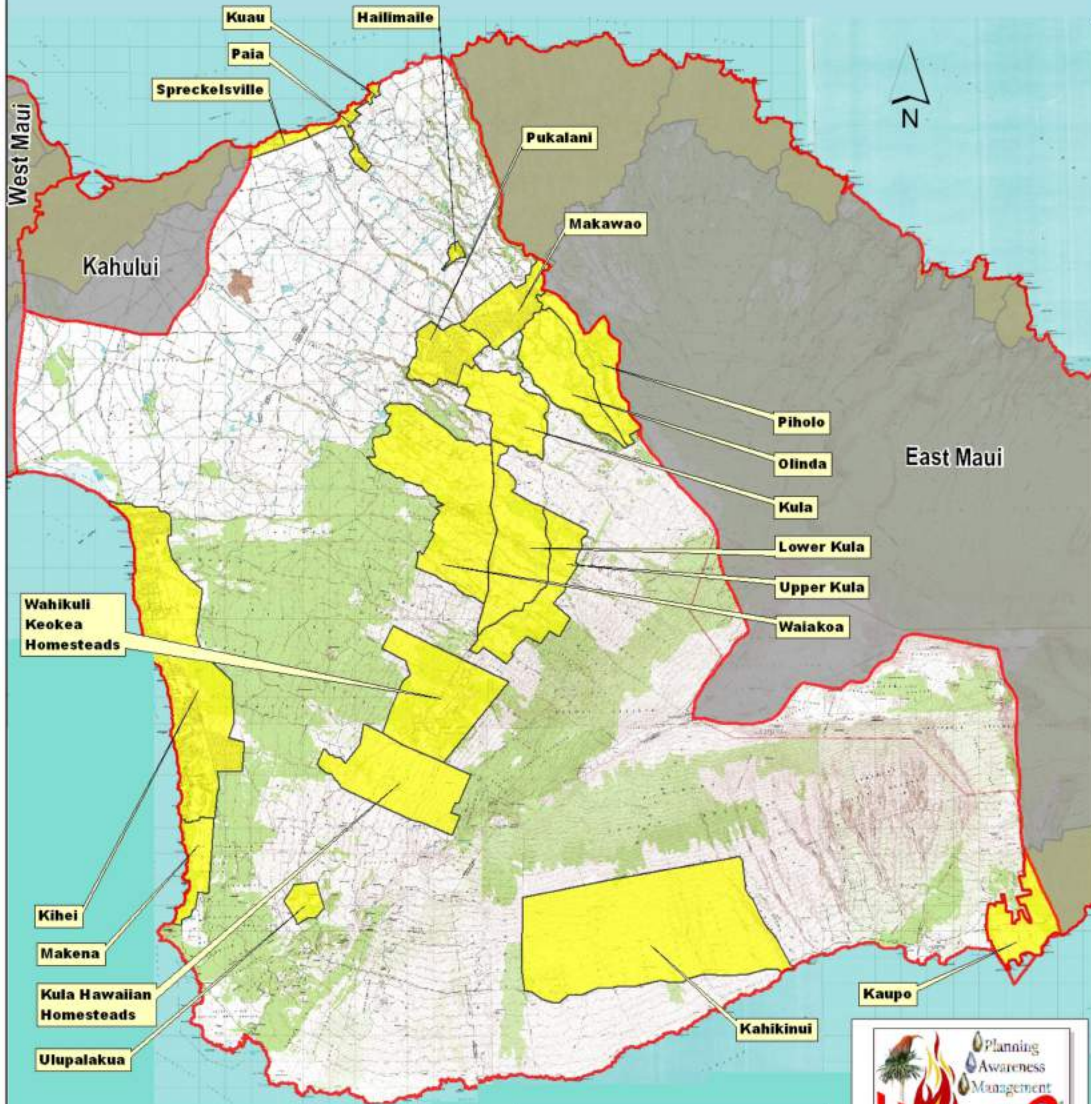


# Central Maui Hazard Assessment

Fire Protection Rating - Community Fire Safe Efforts & Programs Already In Place

## COMMUNITY FIRE SAFE EFFORTS AND PROGRAMS IN PLACE

LOW HAZARD	MODERATE HAZARD	HIGH HAZARD
Organized and active groups provide educational materials and programs throughout the community.	Limited provision of or interest in educational efforts. Fire Department or local group does some limited prevention and public education.	No interest or participation in educational programs. No prevention education by local fire department.



**Community Programs**

- Low Hazard
- Moderate Hazard
- High Hazard



# Fire Environment Rating

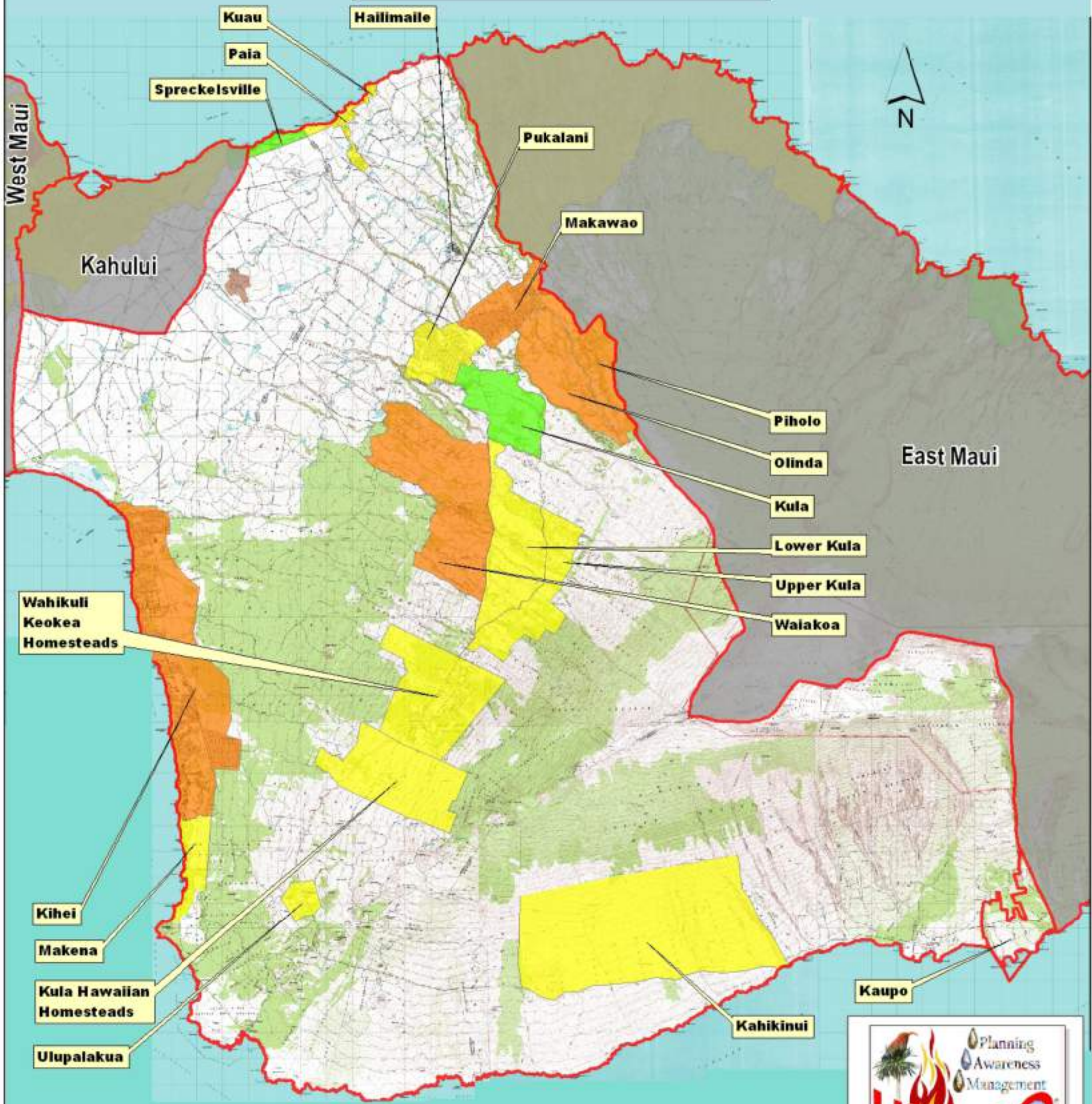
## HWMO Wildfire Hazard Assessment Key

<b>Fire Environment Hazard Rating</b>						
* Note: two elements have unique scoring for better assessment accuracy						
<b>Rating Element</b>	<b>Low (1)</b>		<b>Moderate (2)</b>		<b>High (3)</b>	
<b>Slope</b>	Flat to slight slope (10%)		Moderate slopes (10-30%)		Steep slopes (>30%)	
<b>Average rainfall</b> <b>*Score 1-6 instead</b>	High precipitation (Score=1)	(Score=2)	(Score=3)	(Score=4)	(Score=5)	Low precipitation (Score=6)
<b>Prevailing wind speeds and direction</b> <b>*Score 1-4 instead</b>	Wind rarely (less than 10% of time) exceeds 15 mph. Protection from predominant winds.		Wind rarely (less than 10% of time) exceeds 15 mph.		Wind frequently (50% or more of time) exceeds 15 mph or frequent exposure to predominant winds or transitional/converging wind directions.	
<b>Seasonal or periodic high hazard conditions</b>	Area has no major seasonal increase of fire hazard.		Area is occasionally (e.g., once per decade) exposed to fire prone conditions: drought, lightning storms, desiccated vegetation, and/or strong dry winds		Area is seasonally exposed to unusually severe fire weather, drought conditions, lightning storms, desiccated vegetation, and/or strong dry winds	
<b>Ignition risk</b>	Little to no natural (lightning or lava) ignition risk. No history of arson. Wildland areas absent or distant from public and/or vehicular access.		Some history of wildfire, but not particularly fire prone area due to prevailing lack of fire prone conditions, weather, and vegetation type.		Most historic wildfire events were anthropogenic with easy access to wildland areas via roads or proximity to development OR natural ignition sources such as lightning or lava are prevalent. Fire prone area. High rate of ignitions or history of large scale fires and/or severe wildfire events.	
<b>Topographical features that adversely wildland fire behavior</b>	None.				Major feature such as box canyon, ravines, chutes, saddles, transition zones.	

# Central Maui Hazard Assessment

Fire Environment Rating Total

Fire Environment Hazard Total

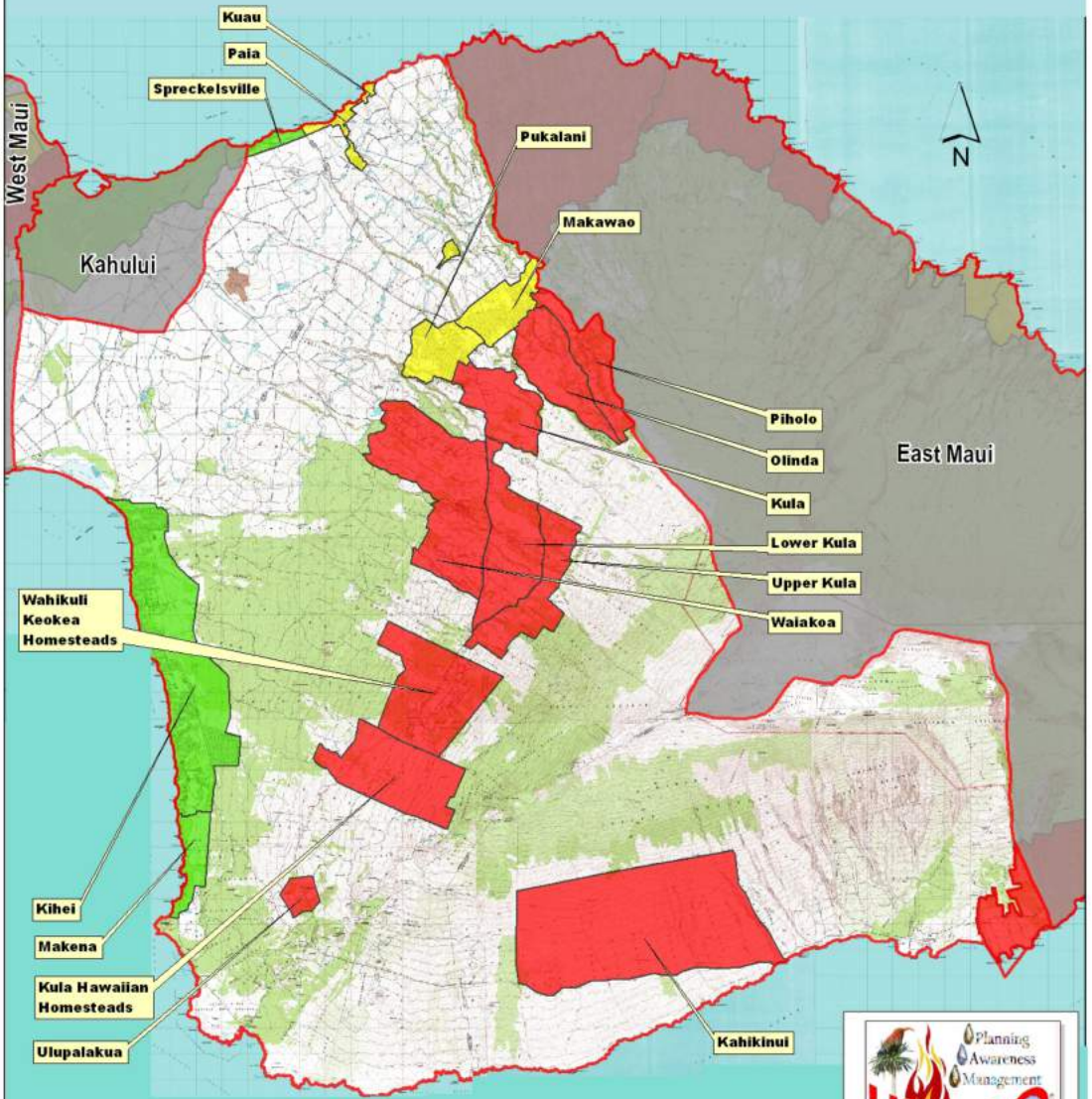


Logos for HWMO (Hawaii Wildfire Management Organization) and Maui County.

# Central Maui Hazard Assessment

## Fire Environment Rating - Slope

SLOPE		
<b>LOW HAZARD</b>	<b>MODERATE HAZARD</b>	<b>HIGH HAZARD</b>
Flat to slight slope (10%)	Moderate slopes (10-30%)	Steep slopes (>30%)



**Slope**

- Low Hazard
- Moderate Hazard
- High Hazard

Planning Awareness Management  
**HWMO**  
Hawaii Wildfire Management Organization

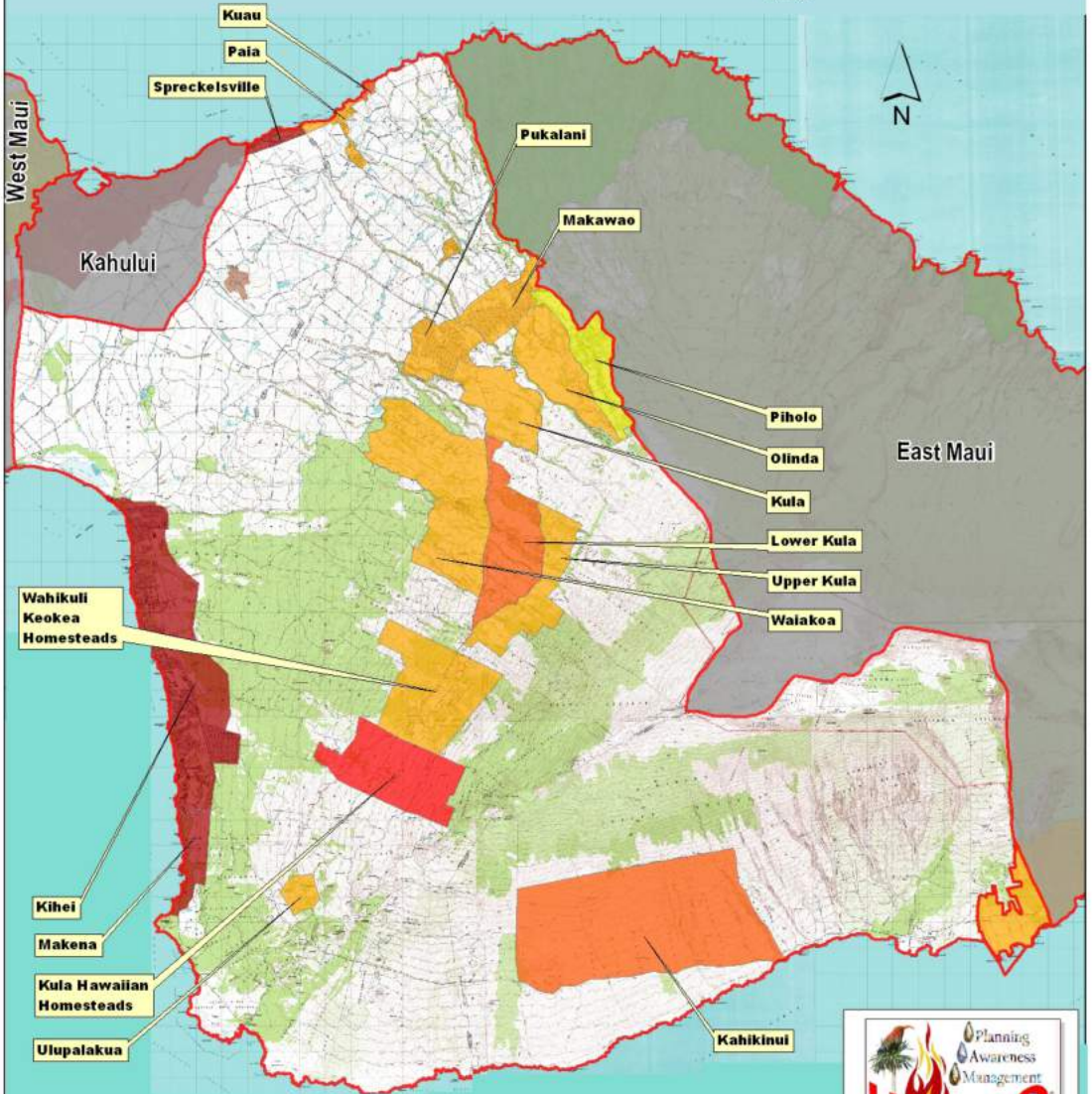
MAUI COUNTY  
HAWAII COUNTY



# Central Maui Hazard Assessment

## Fire Environment Rating - Average Rainfall

AVERAGE RAINFALL		
LOW HAZARD	MODERATE HAZARD	HIGH HAZARD
High Precipitation	Moderate Precipitation	Low Precipitation

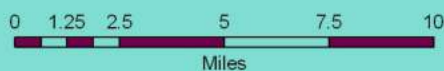
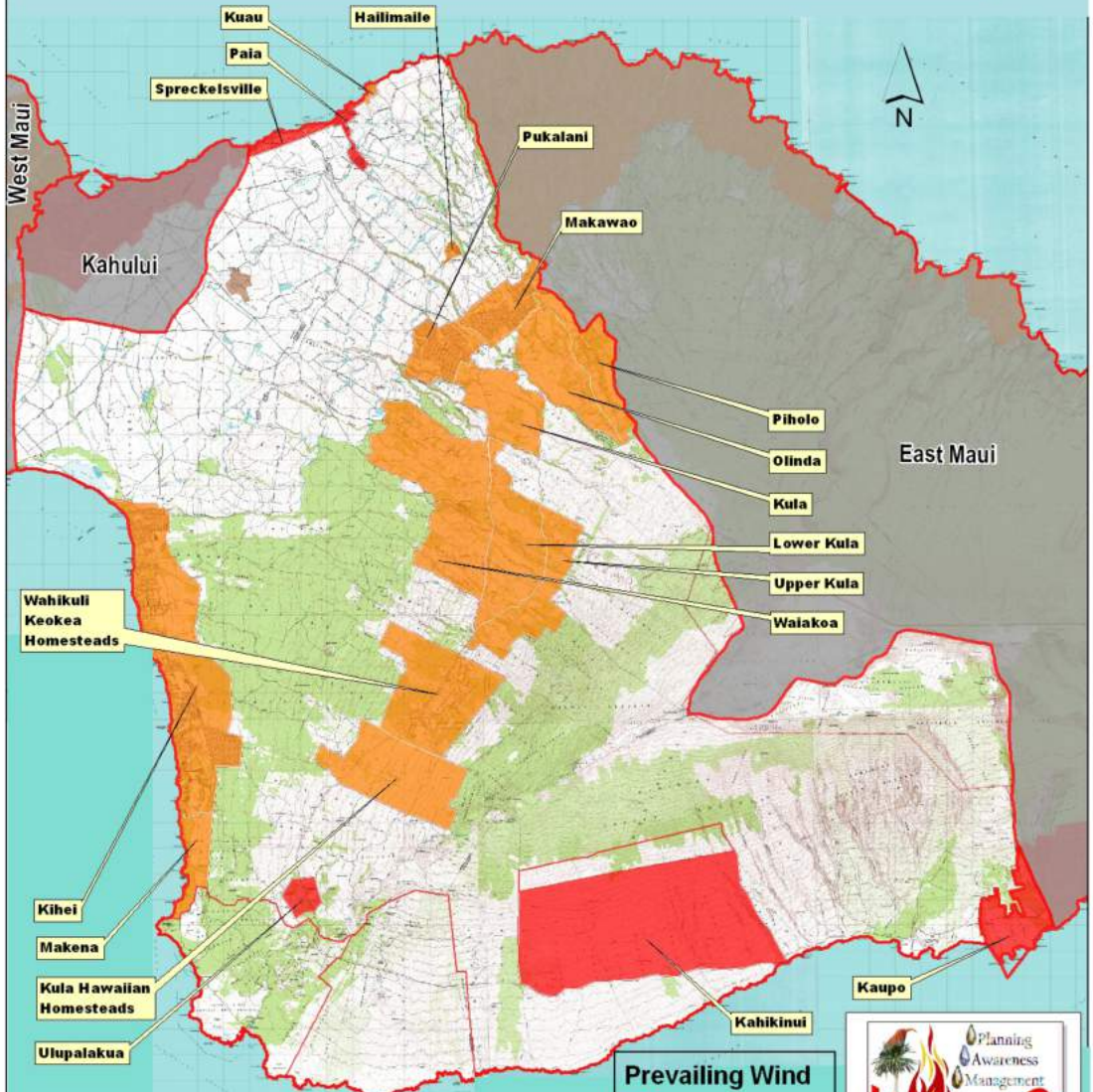


# Central Maui Hazard Assessment

## Fire Environment Rating - Prevailing Wind Speeds & Direction

### PREVAILING WIND SPEEDS AND DIRECTION

LOW HAZARD	MODERATE HAZARD	HIGH HAZARD
Wind rarely (less than 10% of time) exceeds 15 mph. Protection from predominant winds.	Wind rarely (less than 10% of time) exceeds 15 mph.	Wind frequently (50% or more of time) exceeds 15 mph or frequent exposure to predominant winds or transitional/converging wind directions.



**Prevailing Wind**

- No Data
- Low Hazard
- Moderate Hazard
- High Hazard
- Extreme Hazard

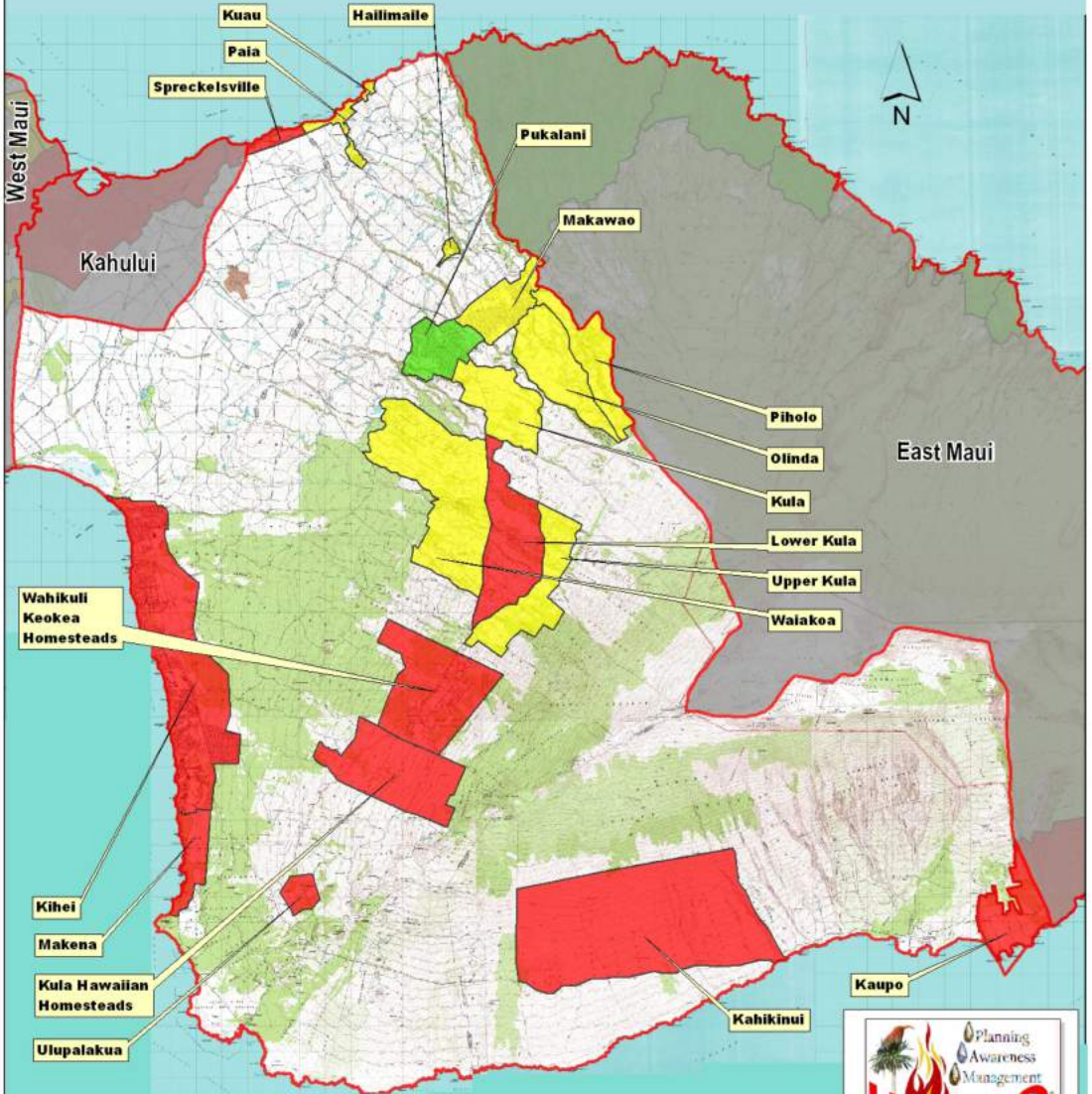


# Central Maui Hazard Assessment

## Fire Environment Rating - Seasonal or Periodic High Hazard Conditions

### SEASONAL OR PERIODIC HIGH HAZARD CONDITIONS

LOW HAZARD	MODERATE HAZARD	HIGH HAZARD
Area has no major seasonal increase of fire hazard.	Area is occasionally (e.g., once per decade) exposed to fire prone conditions: drought, lightning storms, desiccated vegetation, and/or strong dry winds.	Area is seasonally exposed to unusually severe fire weather, drought conditions, lightning storms, desiccated vegetation, and/or strong dry winds.



**Seasonal Conditions**

- Low Hazard
- Moderate Hazard
- High Hazard

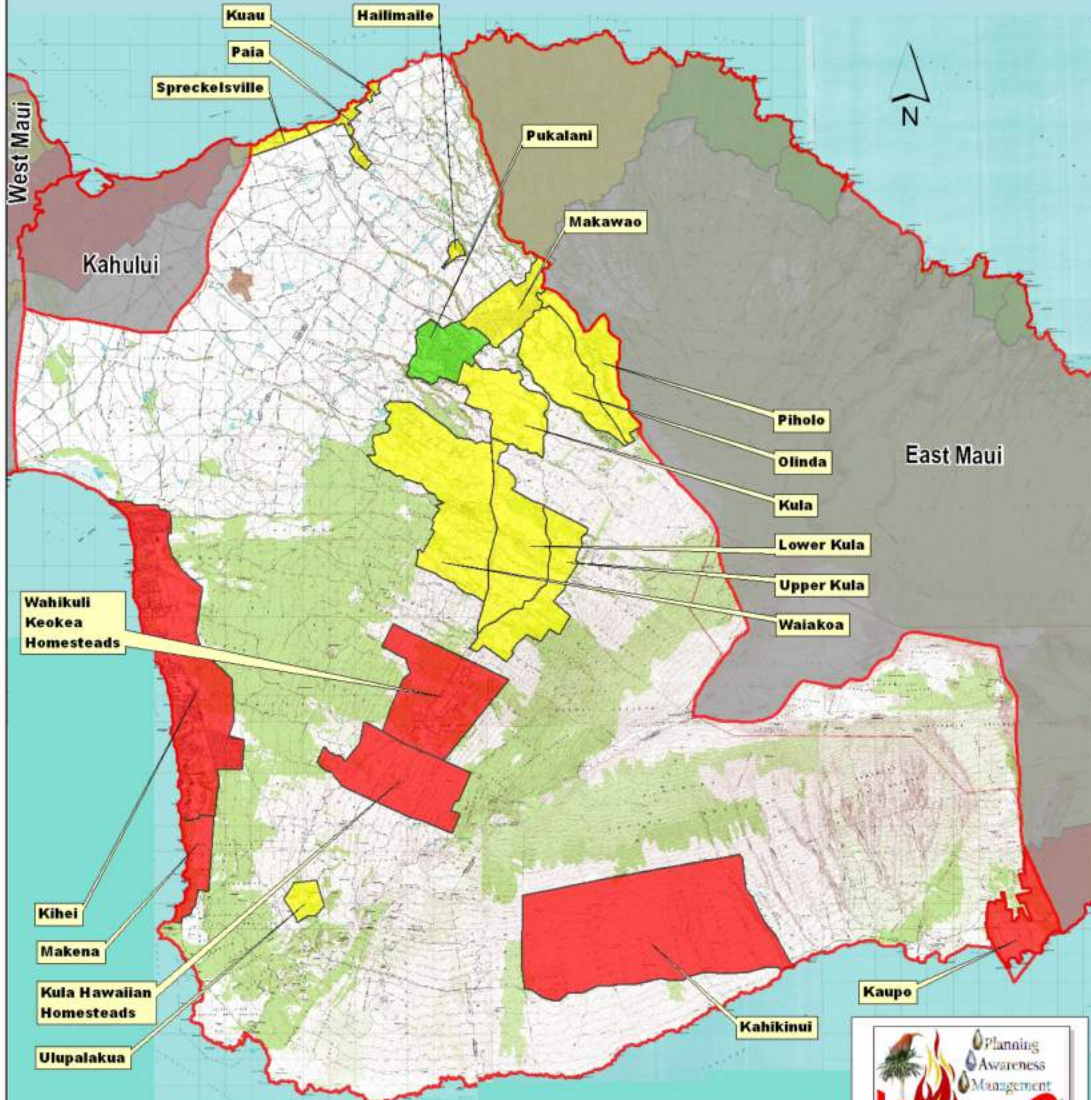

  



# Central Maui Hazard Assessment

## Fire Environment Rating - Ignition Risk

IGNITION RISK		
LOW HAZARD	MODERATE HAZARD	HIGH HAZARD
Little to no natural (lightning or lava) ignition risk. No history of arson. Wildland areas absent or distant from public and/or vehicular access.	Some history of wildfire, but not particularly fire prone area due to prevailing lack of fire prone conditions, weather, and vegetation type.	Most historic wildfire events were anthropogenic with easy access to wildland areas via roads or proximity to development OR natural ignition sources such as lightning or lava are prevalent. Fire prone area. High rate of ignitions or history of large scale fires and/or severe wildfire events.



**Ignition Risk**

- Low Hazard
- Moderate Hazard
- High Hazard

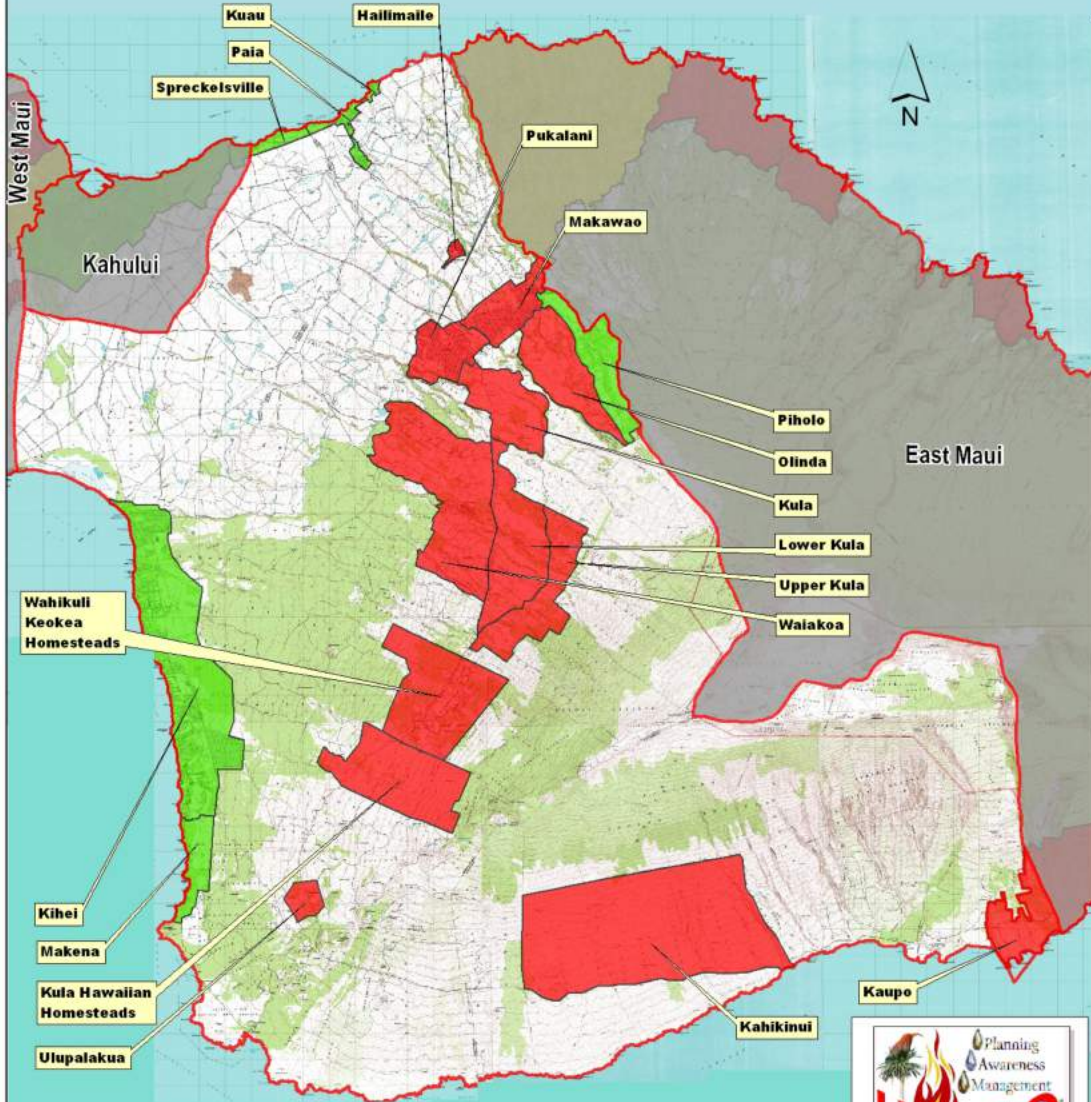


# Central Maui Hazard Assessment

## Fire Environment Rating - Topographic Features That Adversely Effect Wildland Fire Behavior

### HAZARDOUS TOPOGRAPHICAL FEATURES

LOW HAZARD	MODERATE HAZARD	HIGH HAZARD
None.	Minor features, such as low or occasional hills.	Major feature such as box canyon, ravines, chutes, saddles, transition zones.



**Topographic Features**

- Low Hazard
- Moderate Hazard
- High Hazard

