

Managing Hazardous Vegetation on KAUA'I

Reduce Wildfire Spread and Damage ❖ Increase Firefighter Safety

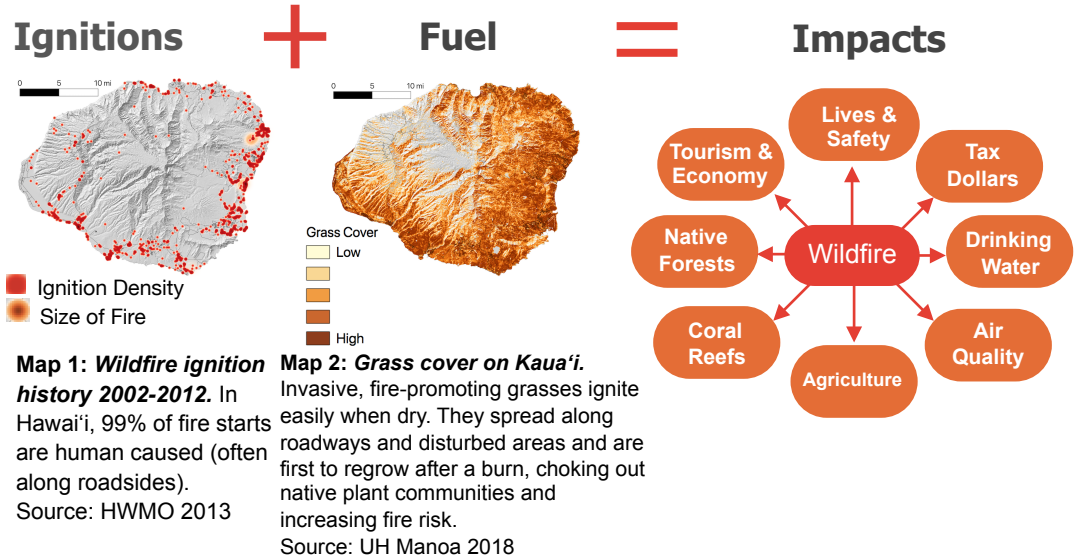
Why manage vegetation?

Dry plant matter ignites easily and provides **fuel** for a fire to follow.

In Hawai'i, the **amount of flammable hazardous vegetation, or fuel load**, can develop quickly due to rapid growth of vegetation, multiple growing seasons, and regular dry and drought cycles.

Frequent, active **vegetation management** is critical to reduce fire hazard across the landscape and to **protect our communities and valuable ecosystems from destructive fire impacts mauka to makai**.

Wildfires need **oxygen, ignitions (heat), and fuel** to start and spread. Kaua'i has all of these ingredients year-round and wildfire impacts are devastating and far-reaching.



Land Managers are Currently Reducing Wildfire Risk Through Vegetation Management

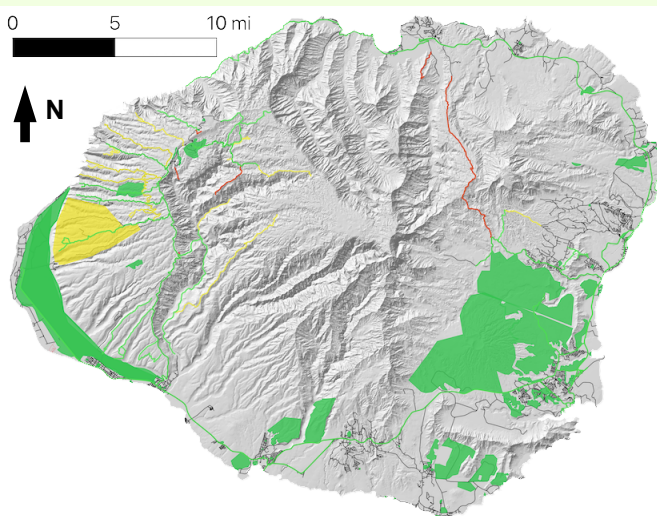
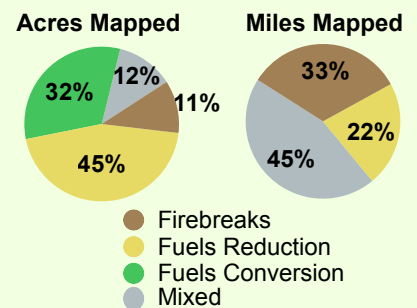
In 2018-19, Hawai'i Wildfire Management Organization (HWMO) conducted a statewide rapid assessment to identify where vegetation is managed in a way that reduces wildfire hazard.

Vegetation management efforts were categorized as strategies that:

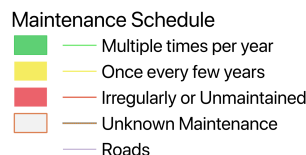
- ❖ Reduce fuel load (**fuels reduction**)
- ❖ Transition vegetation from higher to lower fire risk (**fuels conversion**)
- ❖ Provide safer first response access and breakup fuel continuity across landscapes (**firebreaks or access roads**)

Mapping contributors included agency representatives, community groups, and other large landowners stewarding land across Kaua'i.

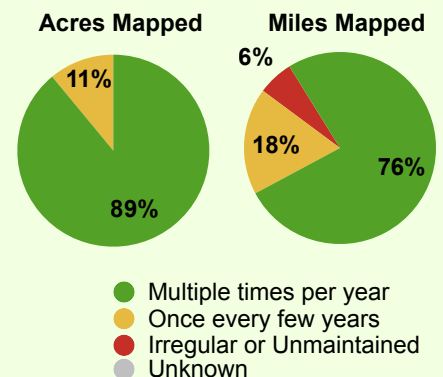
Wildfire Hazard Mitigation Strategy



Land stewards on Kaua'i are managing roughly **260 miles** and **41,000 acres** of vegetation (nearly **12%** of the island).



Maintenance Schedule



Map 3: Maintenance frequency of areas with vegetation management activities reported by mapping participants. Regular, ongoing maintenance of vegetation is critical to effectively reduce wildfire hazard.

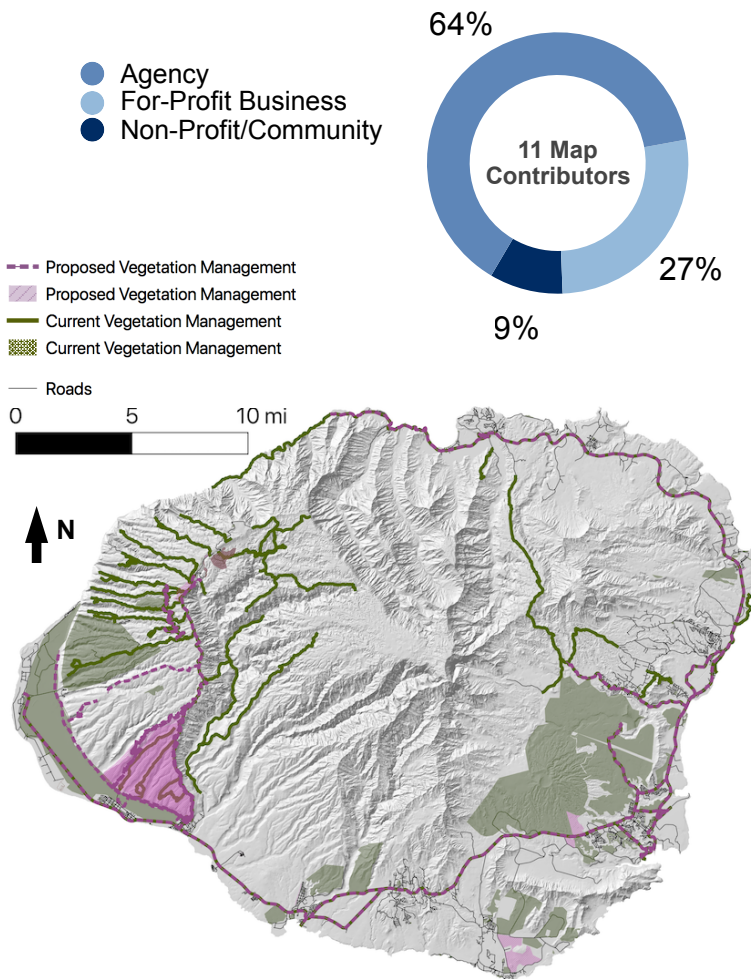
For more results visit:



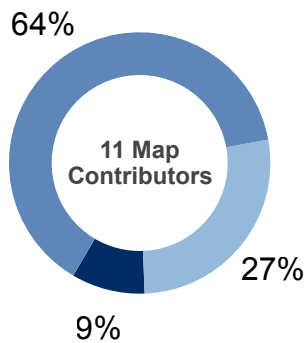
hawaiiwildfire.org

There is a great need for investment in and collaboration on vegetation management as expressed by the 11 map contributors and 23 action planning workshop participants on Kaua'i.

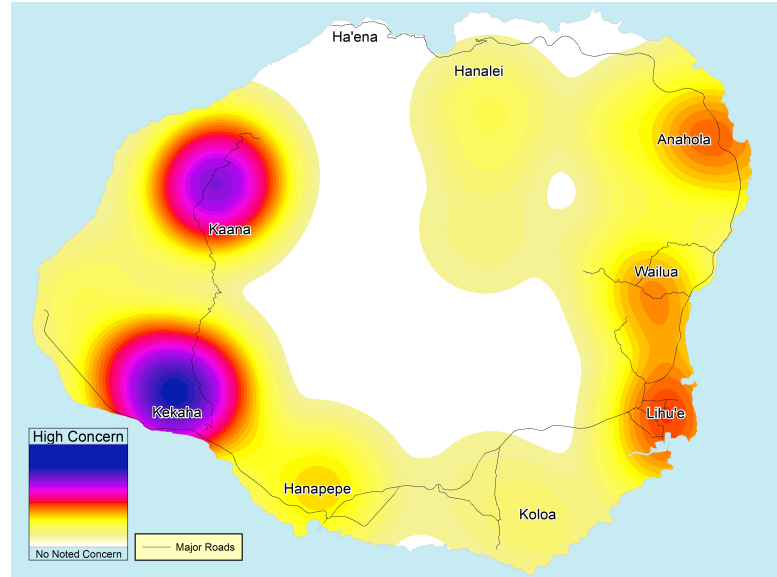
Mapping contributors identified roughly **7,600 acres** and **180 miles** of needed vegetation management.



Map 4: Rapid assessment results. Land stewards identified current and proposed areas in need of ongoing vegetation management.





Where to Start First?

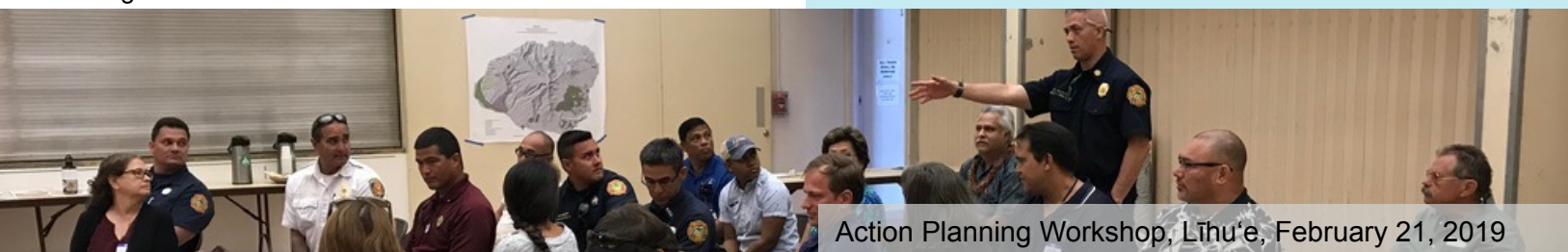


Map 5: Collaborative priority areas. Participants at the action planning workshop identified areas of highest concern where fire hazard (hazardous vegetation, fire weather, and frequent ignitions) and values at risk of fire damage intersect.

Recommended Actions

(input from 23 action planning workshop participants)

- 
Prioritize fuel management near critical road infrastructure and around communities, particularly in 'hotspot areas'
- 
Support active land management:
 - Return fallow agriculture to active use
 - Support community programs and private landowners with funding and technical assistance
- 
Take a comprehensive approach:
 - Reduce wildfire hazards
 - Increase response capacity (including water resources)
 - Increase community awareness (i.e., communication before/during fire emergencies)



Action Planning Workshop, Lihue, February 21, 2019

The 2018-2019 statewide rapid assessment of vegetation management was conducted by HWMO to better understand existing vegetation management and prioritize needed vegetation management to **reduce future losses from wildfire**. This project was made possible by the numerous land steward and agency partners who participated in the project and funding support provided by the Hawai'i State Grant-in-Aid Program 2016 and the U.S. Forest Service, Pacific Southwest Region, under the terms of Grant No. 16-11052012-146 and No. 17-DG-11052012-143. USDA is an equal opportunity provider and employer.

More project details at: hawaiiwildfire.org

