




# MENTAL HEALTH DAY 2016 "Psychiatric First Aid"

SATURDAY 22<sup>nd</sup> of October 2016  
Institut Français - Salle Montaigne

 Lebanese Psychiatric Society  
[www.lpsonline.org](http://www.lpsonline.org)

  
Liberté • Égalité • Fraternité  
RÉPUBLIQUE FRANÇAISE  
Ambassade de France au Liban LIBAN

CME Free Entrance



## WELCOME NOTE

It is our pleasure to welcome you to the **Mental Health Day 2016**.

Lebanon and the whole region have been experiencing lately several extraordinary humanitarian crises, and our country has to confront overwhelming challenges. For that reason the Lebanese Psychiatric Society has decided to focus its annual Mental Health Day on **Psychiatric First Aid**.

We are especially proud to have Prof. Helen Herrman, president-elect of the World Psychiatric Association, as our keynote speaker: she will talk about the mental health of women and girls in adversity. There will be presentations, discussions, and round table with experts tackling several aspects of Mental Health Care as well as priorities and challenges in emergency situations.

We are pleased that you are joining us for what promises to be a stimulating and informative event that aims to be relevant to your current daily practice.



## ORGANISING COMMITTEE

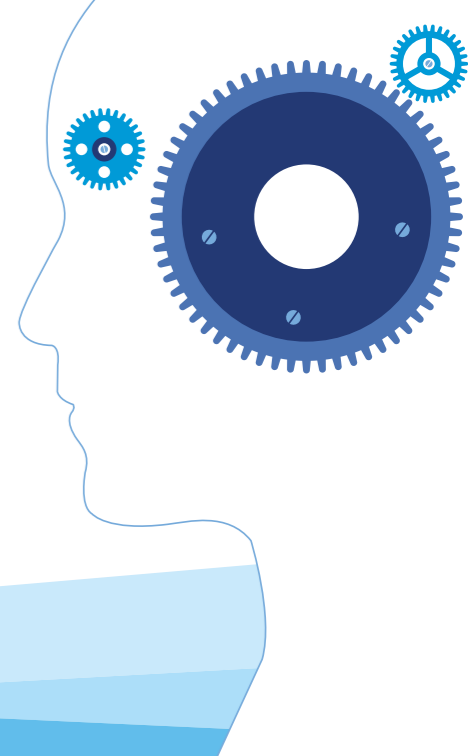
**Josyan MADI-SKAFF MD** – President of the Lebanese Psychiatric Society  
**Charles BADDOURA MD** – President of the Congress Committee

**Elie CHEDID MD**  
**Joseph EL-KHOURY MD**  
**Georges KARAM MD**  
**François KAZOUR MD**  
**Sami RICHA MD**

## INTERNATIONAL SPEAKER



**Helen HERRMAN MD**



## PROGRAM

▶ **8:30** Registration

▶ **9:00** Opening ceremony

**Charles BADDOURA** – President of the Congress

**Josyan MADI-SKAFF** – President of the LPS

**Walid AMMAR** – General Director of the Ministry of Health

▶ **9:30 - 10:00** Keynote speaker

**Helen HERRMAN** Promoting the Mental Health of Women and Girls in adversity

Chair: **Josyan MADI-SKAFF**

▶ **10:00 - 11:00 FIRST SESSION – MENTAL HEALTH FIRST AID**

Chairs: **Charles BADDOURA**

**Khalil ACHKAR**: President – Family Medicine Society

▶ **10:00 - 10:20 Rami BOU KHALIL** – How to identify individuals in need of mental health first aid

▶ **10:20 - 10:40 Abbas ALAMEDDINE** – Misconception about mental health among primary health care professionals

▶ **10:40 - 11:00 Rabih CHAMMAY** – Mental health system reform and humanitarian crisis in Lebanon

▶ **11:00 - 11:50** Symposium by **Andreas SCHREINER (Janssen Cilag)**

Improving outcomes for patients with schizophrenia

The role of newer long-acting antipsychotic medications.



▶ **11:50 - 12:20 Coffee Break** 

▶ **12:20 - 13:50 SECOND SESSION - INTERVENTIONS**

**Chairs: Ziad NAHAS**

**Myrna MOUZAWAK** – Sociologist at USEK

- ▶ **12:20 - 12:40 Elie KARAM** – Post conflict Interventions: Data from the field
- ▶ **12:40 - 13:00 Laila FARHOUD** – Mental health and psychosocial care for citizens affected by war
- ▶ **13:00 - 13:20 Joseph EL-KHOURY** – Psychological aid for emergency and relief workers
- ▶ **13:20 - 13:40 Leyla AKOURY DIRANI** – Psychological first aid in children and adolescents

▶ **13:40 - 14:40 Lunch**

▶ **14:40 - 16:00 THIRD SESSION – INTERVENTIONS II**

**Chairs: Georges HADDAD**

**Nabil NAJA:** Medical Director – Dar el Ajaza

- ▶ **14:40 - 15:00 Michel SOUFIA** – Intervention en santé mentale auprès des réfugiés syriens au Liban
- ▶ **15:00 - 15:20 Brigitte KHOURY** – Problem solving groups on intervention for women refugees

- ▶ **15:20 - 15:40 François KAZOUR** – Prise en charge des réfugiés syriens en milieu hospitalier
- ▶ **15:40 - 16:00 Marie Adele SALEM** – Mainstreaming psychosocial support in a volunteer-based organization, the Lebanese Red Cross experience

▶ **16:00 - 16:30 Coffee Break** 

▶ **16:30 - 17:30 ROUND TABLE: PRIORITIES AND CHALLENGES**

**Chairs: Josyan MADI-SKAFF & Sami RICHA**

**Discussant: Helen HERRMAN**

**Fadi DACCACHE (IMC):** Challenges and future plans in implementing mental health into primary care

**Myrna GHANNAGEH (USJ):** Expériences pour la protection des enfants de la guerre (1996-2006): Difficulté et défis.

**Bernard SOUSS (MSF):** ‘Médecins Sans Frontières’ in Lebanon: Priorities and challenges.

▶ **17:30 - 18:00 Closure of the MHD: Charles BADDOURA**





## NEOS

**ADDRESS:** 5<sup>th</sup> Floor, Vanlian Bldg No 12,  
Pasteur street, Cityrama, Sin el Fil, Lebanon

**PHONE:** 00961 3 733818

**E.MAIL:** [nour@neoslb.com](mailto:nour@neoslb.com)

**WEBSITE:** [www.neoslb.com](http://www.neoslb.com)