

# Fall Bounty



**R&B**  
BOUTIQUE

# Fall Bounty

**Maple Harvest** table runner by Corey Yoder  
featuring the *Fall Bounty* collection by P&B Textiles

Quilt Size: 18" x 45"

## Yardage

FBOU 868 O	<b>Large Leaf</b>	1/2 yard
FBOU 871 K	<b>Tossed Leaves</b>	1/4 yard
FBOU 873 K	<b>Black Vine</b>	2/3 yard
FBOU 874 D	<b>Red Tonal</b>	1/4 yard
FBOU 874 Y	<b>Yellow Tonal</b>	1/4 yard
ESS2 570 A*	<b>Green Tonal</b>	1/2 yard
BACKING	<b>any FBOU fabric</b>	1 3/8 yard

\* From the *Bear Essentials 2* collection

## Cutting

### From the Large Leaf (868 O), cut:

- (2) 2 3/4" x 42" strips; cut into (20) 2 3/4" squares
- (1) 2 5/8" x 42" strip; cut into (15) 2 5/8" squares
- (1) 3" x 42" strip; cut into (10) 3" squares
- (1) 1" x 42" strip; cut into (5) 1" x 4" rectangles

### From the Tossed Leaves (871 K), cut:

- (2) 2 5/8" x 42" strips; cut into (20) 2 5/8" squares

### From the Black Vine (873 K), cut:

- (2) 5 3/8" x 42" strips; cut into (10) 5 3/8" squares. Cut the squares in half diagonally to yield 20 triangles.
- (4) 2 1/4" x 42" binding strips

### From the Red Tonal (874 D), cut:

- (2) 2 3/4" x 42" strips; cut into (20) 2 3/4" squares

### From the Yellow Tonal (874 Y), cut:

- (2) 2 5/8" x 42" strips; cut into (25) 2 5/8" squares

### From the Green Tonal (570 A), cut:

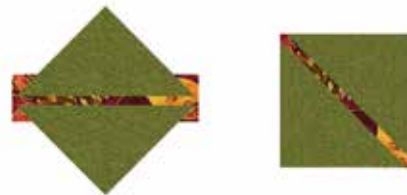
- (1) 3" x 42" strip; cut into (10) 3" squares
- (1) 2 3/4" x 42" strip; cut into (5) 2 3/4" squares. Cut the squares in half diagonally to yield 10 triangles.
- (1) 2 5/8" x 42" strip; cut into (5) 2 5/8" squares
- (2) 3 1/8" x 42" strips; cut into (20) 3 1/8" squares. Cut the squares in half diagonally to yield 40 triangles.

## Leaf Block Assembly

1. Draw a diagonal line from corner to corner on the wrong side of each green 3" square. Layer a marked square with a large-leaf 3" square, right sides together. Sew 1/4" on both sides of the marked line. Cut the squares apart on the line to make two half-square-triangle units. Press the seam allowances toward the darker triangle. Make 20 half-square-triangle units.



2. Join green 2 3/4" triangles to both long sides of a large-leaf rectangle to make a stem unit. The rectangle will extend beyond the triangles. Trim the unit to measure 2 5/8" square. Make 5 units.



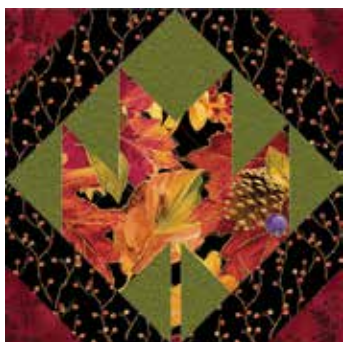
3. Draw a diagonal line from corner to corner on the wrong side of the red squares. Place a marked square on the corner of a black-vine triangle, right sides together. Sew along the line and trim the corner fabric, leaving a 1/4" seam allowance. Press the seam allowances toward the resulting triangle. Make 20 corner units.



4. Lay out four units from step 1, one unit from step 2, one green  $2\frac{5}{8}$ " square and three large-leaf  $2\frac{5}{8}$ " squares in three rows as shown. Join the pieces into rows; join the rows to make a center unit. Make 5 units.

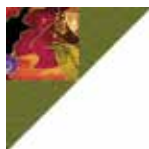


5. Lay out four corner units and one center unit as shown. Join the units to complete one block. Make 5 blocks.



## Nine-Patch Block Assembly

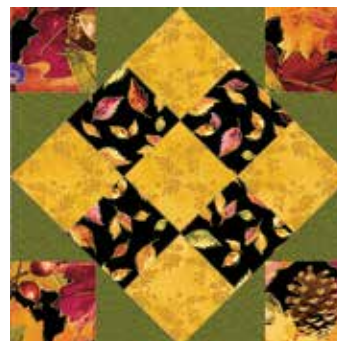
6. Sew green  $3\frac{1}{8}$ " triangles to adjacent sides of a large-leaf  $2\frac{3}{4}$ " square to make a corner unit. Make 20 units.



7. Lay out five yellow squares and four tossed-leaf squares in a nine-patch arrangement. Join the squares into rows; join the rows to make a center unit. Make 5 units.



8. Lay out four corner units and one center unit as shown. Join the units to complete one block. Make 5 blocks.



## Table Runner Assembly

9. Refer to the photo for placement guidance. Lay out the Leaf blocks and Nine-Patch blocks in two rows of five blocks each, alternating the blocks in each row and from row to row. Join the blocks into rows, then join the rows.

10. Layer the table-runner top with batting and backing; baste. Quilt as desired. Using the black-vine  $2\frac{1}{4}$ "-wide strips, bind the edges to finish.

# Fall Bounty

Metallic Accent Collection by **P&B Textiles**



FBOU 868 O



FBOU 869 K – shown selvage to selvage – 24" repeat



FBOU 872 K – shown selvage to selvage



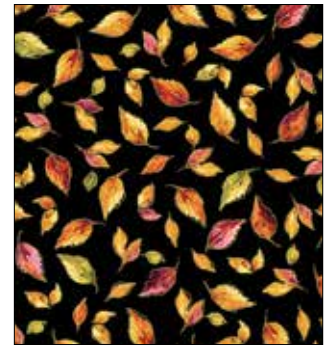
FBOU 870 D



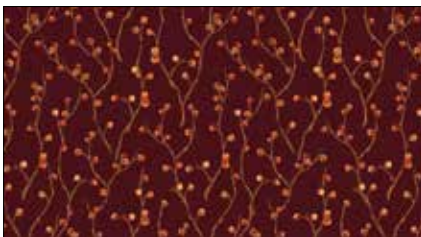
FBOU 870 K



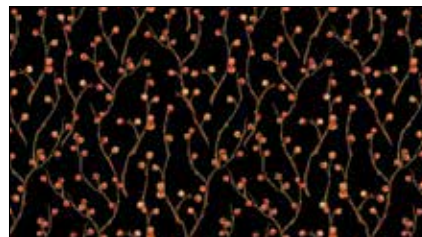
FBOU 871 D



FBOU 871 K



FBOU 873 D



FBOU 873 K



FBOU 875 O



FBOU 874 D



FBOU 874 O



FBOU 874 Y



**P&B Textiles** ♦ [www.pbtex.com](http://www.pbtex.com) ♦ 800-351-9087

45-47 Washington St., Pawtucket, RI 02860 ♦ 237 W. 35th St., 11th floor, New York, NY 10001

▲ 100% cotton ♦ Cold wash & dry ♦ 43" / 44" ♦ Colors may vary due to printing process

All fabrics shown at 25% scale except where indicated otherwise.