

Suede Medley

Starlight Paths Quilt by Stacey Day



Tote Bag by Heidi Pridemore



Suede Medley

Starlight Paths Quilt by Stacey Day
featuring the *Suede Medley* collection
by P&B Textiles • Quilt Size: 61" square

Yardage

Fabric A	CSNE W* (solid white)	2 1/4 yards
Fabric B	SUE5 301 AU	1/8 yard
Fabric C	SUE5 301 W	1/8 yard
Fabric D	SUE5 301 O	1/8 yard
Fabric E	SUE5 301 E	1/8 yard
Fabric F	SUE5 301 P	1/8 yard
Fabric G	SUE5 301 LP	1/8 yard
Fabric H	SUE5 301 HG	1/8 yard
Fabric I	SUE5 301 LG	1/8 yard
Fabric J	SUE5 301 B	1/8 yard
Fabric K	SUE5 301 LB	1/8 yard
Fabric L	SUE5 301 DR	1/8 yard
Fabric M	SUE5 301 C	1/8 yard
Fabric N	SUE5 301 LS	1/4 yard
Fabric O	SUE5 301 S	1/3 yard
Fabric P	SUE5 301 SS	3/8 yard
Fabric Q	SUE5 301 GR	1/3 yard
Fabric R	SUE5 301 DS	3/8 yard
Fabric S	SUE5 301 SB	5/8 yard
Backing	any SUE5 fabric	4 1/8 yards

* From the *Color Spectrum* collection

Cutting

All strips are cut across the width of the fabric.

From Fabric A (CSNE W), cut:

- (3) 5 1/2" x 42" strips; cut into (4) 5 1/2" squares and (8) 5 1/2" x 10 1/2" rectangles
- (2) 5 3/8" x 42" strips; cut into (13) 5 3/8" squares, sub-cut on both diagonals to make (52) Quarter-Square Triangles (QSTs)
- (5) 4 1/2" x 42" strips; cut into (60) 3 1/2" x 4 1/2" rectangles
- (2) 3 1/2" x 42" strips; cut into (24) 2 1/2" x 3 1/2" rectangles
- (5) 3 1/2" x 42" strips; cut into (52) 3 1/2" squares

From Fabric B and Fabric C (SUE5 301 AU and SUE5 301 W), cut:

- (1) 2 5/8" x 42" strip each; cut (4) diamonds using the template

From Fabric D through Fabric M (SUE5 301 O, E, P, LP, HG, LG, B, LB, DR, and C), cut:

- (1) 2 5/8" x 42" strip each; cut (8) diamonds using the template

From Fabric N (SUE5 301 LS), cut:

- (2) 2 5/8" x 42" strips; cut (16) diamonds using the template

From Fabric O (SUE5 301 S), cut:

- (2) 4 1/2" x 42" strips; cut into (6) 4 1/2" squares and (6) 2 1/2" x 4 1/2" rectangles

From Fabric P (SUE5 301 SS), cut:

- (3) 3 1/2" x 42" strips; cut into (36) 3 1/2" squares

From Fabric Q (SUE5 301 GR), cut:

- (2) 4 1/2" x 42" strips; cut into (6) 4 1/2" squares and (6) 2 1/2" x 4 1/2" rectangles

From Fabric R (CWE3 202 DS), cut:

- (3) 3 1/2" x 42" strips; cut into (36) 3 1/2" squares

From Fabric S (SUE5 301 SB), cut:

- (7) 2 1/4" x 42" strips

Star Assembly

If desired, use a spray starch or alternative on the diamonds and QSTs before sewing to prevent skewing. The stars are constructed using a Y-seam. Use the pairings below to match the fabrics for the two-tone stars.

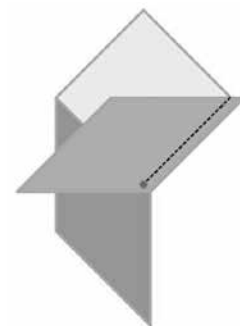
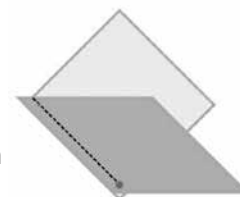
FABRIC PAIRINGS:

C/B D/E F/G I/H K/J L/N M/N

1. Using a removable marking pen, mark the seam allowance in the corner of each Fabric A 3 1/2" square and 5 3/8" QST, and in all found corners of the Fabric B through Fabric N diamonds pieces on the WRONG side of the pieces.

2. Pin the Fabric C, D, F, I, K, L, and M diamonds right sides together with the Fabric A 3 1/2" squares, matching the marked seam allowances, as shown. Sew through the top mark and stop just at the bottom mark, taking two or three backstitches to secure the seam.

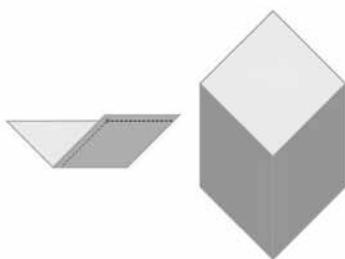
3. Pin and sew the remaining diamonds to the adjacent side of the Fabric A 3 1/2" squares, referring to the fabric pairings for diamonds placement, sewing through the top and stopping at the bottom as before.



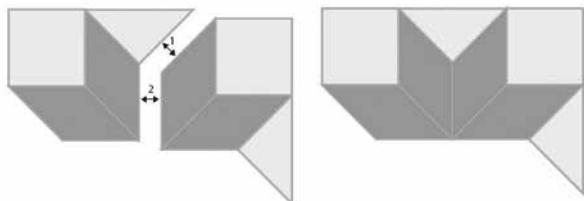
4. Fold the square so the diamonds are right sides together and pin the bottom seam allowance at the mark. Sew from the bottom to the square, through the bottom marks and stopping at the top. Open the piece and check to make sure that none of the pieces are puckered or caught at the Y-seam junction, and that there are no gaping holes at the junction either. Press the first two seam allowances towards the white square, and the diamond seam open.

Finished Y-Seam

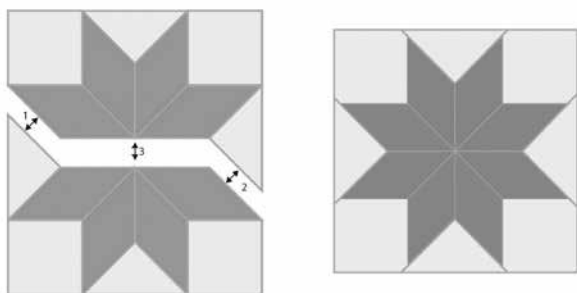
5. Pin and sew a Fabric A $5\frac{3}{8}$ " QST to the Right hand diamond as shown, backstitching at the bottom marks as before. This makes the Quarter Star pieces.



6. Sew the Quarter Stars together in pairs, matching fabrics, and sewing the QST to the diamonds as before, and then completing the Y-seam. Press towards the triangles and press the diamond seam open. Clip any extra bits from the seam allowances to eliminate bulk in the seams.



7. Sew the pairs together into the finished Star Blocks, first pinning and sewing the QSTs to the diamonds as before, then carefully matching up and pinning the center seams of the diamonds and sewing from mark to mark. Open the block and check to make sure it lays flat and that there are no catches, pulls or puckers in the seam allowance or at the Y-seam junctions. Press towards the triangles, and final diamond seam flat. Make 13 Star Blocks.



Chain Block Assembly

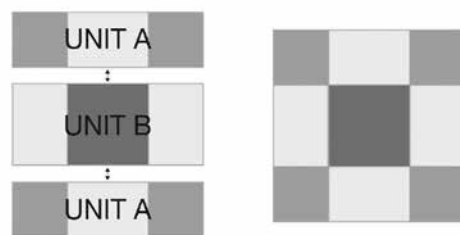
8. Sew Fabric P $3\frac{1}{2}$ " squares to either side of a Fabric A $3\frac{1}{2}$ " x $4\frac{1}{2}$ " rectangle. Press towards the squares. Make 18 and label Unit A.



9. Sew a Fabric A $3\frac{1}{2}$ " x $4\frac{1}{2}$ " rectangle to either side of a Fabric O $4\frac{1}{2}$ " square. Press towards the square. Make 6 and label unit B.



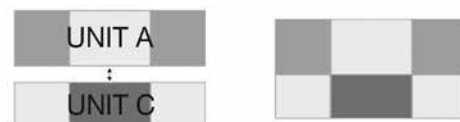
10. Sew a Unit A to both the top and bottom of a Unit B to complete the chain block. Make 6 blocks.



11. Sew a Fabric A $2\frac{1}{2}$ " x $3\frac{1}{2}$ " rectangle to either side of a Fabric O $2\frac{1}{2}$ " x $4\frac{1}{2}$ " rectangles. Press towards the center rectangles. Make 6 and label Unit C.



12. Sew a Unit A to the top of a Unit C to complete the half-chain block. Make 6 blocks.



13. Repeat steps 8–12 using Fabric R in place of Fabric P and Fabric Q in place of Fabric O.

Quilt Assembly

13. Referring to the layout diagram for Star Block, Chain Block and Half-Chain Block, sew the blocks and remaining Fabric A squares and rectangles together into rows, matching seams carefully.

14. Sew the rows together to complete the finished quilt top, matching seams carefully.

15. Layer the quilt top with batting and backing; baste. Quilt as desired. Using the Fabric S $2\frac{1}{4}$ " wide binding strips, sew around the quilt top. Turn the binding to the back and secure in place by hand or machine. Label and enjoy!

Suede Medley

Tote Bag by Heidi Pridemore
featuring the *Suede Medley* collection
by P&B Textiles

Size: 14" high x 12" wide x 4" deep

Yardage

Fabric A	SUE5 301 B (body of bag)	1/3 yard
Fabric B	SUE5 301 LB (straps)	1/3 yard
Fabric C	SUE5 301 S (bag top)	1/4 yard
Fabric D	SUE5 301 LS (bag trim stripe)	1/8 yard
Fabric E	SUE5 301 W (lining)	1/2 yard

YOU WILL ALSO NEED:

- Cotton batting: Two 14 1/2" x 16 1/2" pieces
- Two 2" x 25" strips
- Flowers, buttons, etc. for embellishment if desired

Cutting

All strips are cut across the width of fabric.

From Fabric A (SUE5 301 B), cut:

- Cut two 10 1/2" x 16 1/2" pieces for the bag bottom

From Fabric B (SUE5 301 LB), cut:

- Cut two 4" x 25" strips for the straps

From Fabric C (SUE5 301 S), cut:

- Cut two 3 1/2" x 16 1/2" strips bag top

From Fabric D (SUE5 301 K), cut:

- Cut two 1 1/2" x 16 1/2" strips for the bag trim

From Fabric E (SUE5 301 W), cut:

- Cut two 14 1/2" x 16 1/2" strips for the lining

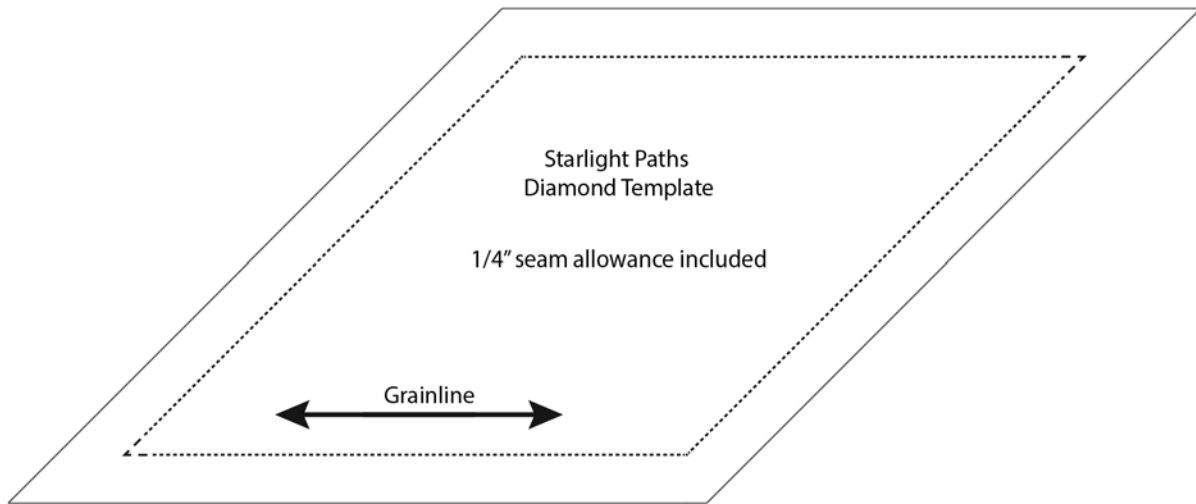


Assembly Instructions

Refer to the illustration as a guide.

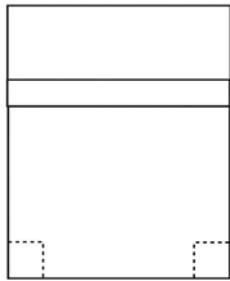
1. Sew one 1 1/2" x 16 1/2" Fabric D strip to the top of one 10 1/2" x 16 1/2" Fabric A piece. Sew one 3 1/2" x 16 1/2" Fabric C strip to the top of the 1 1/2" x 16 1/2" Fabric D strip to make the bag front panel. Repeat to make the bag back panel.
2. Layer the bag front panel with one 14 1/2" x 16 1/2" cotton batting and quilt as desired. Repeat with the bag back panel.
3. Place the bag front panel and bag back panel, right sides together, Sew down each side and across the bottom of the two layers to make the bag body.
4. Place the (2) 14 1/2" x 16 1/2" Fabric E panels, right sides together. Sew down each side and across the bottom, leaving a 4" opening in one seam for turning the bag later to make the bag lining.

Diamond Template for Starlight Paths Quilt.



Tote Bag instructions continued from flap.

5. Measure and mark in from the side and down 2" on the bottom two corners of the bag body. Cut the square on each corner. Repeat with the bag lining.



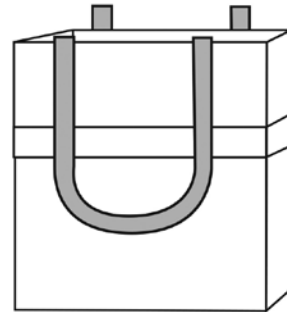
6. Open the cut corner on the bag body and fold the opening to line up the seams on the side of the bag with the bottom seam. Stitch across the layers with a 1/4" seam allowance to make one box corner. Repeat to make a box corner on the other bottom corner of the bag body and the two bottom corners of the lining.

7. Turn the bag body right side out. Leave the lining wrong side out.

8. To make the straps, fold one 4" x 25" Fabric B strip in half lengthwise and press a centerline. Open the folded strip and fold the long edges in, aligning them with the centerline and press. Fold the strip in half a second time and press to make one 1" x 25" strip with finished edges. Open the strap and center one 2" x 25" piece of batting inside the strap. Refold the strap and topstitch down each long side about

an 1/8" from each edge to make one strap. Repeat to make a second strap.

9. Position and pin one strap to the front of the bag body and one to the back of the bag body, with the handle facing down and aligning the raw edges of the strap with the raw edges of the bag body.



10. Slide the lining over the bag body and align the top raw edges on both bag and the straps. Pin in place. Sew around the bag and lining top, catching the strap ends in the seam. Go back over the strap ends to re-enforce.

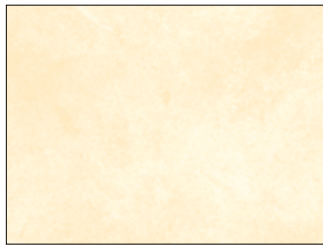
11. Turn the bag right side out through the opening in the lining. Stitch the opening in the lining closed.

12. Work the bag with your hands to shape the box bottom on the bag. Press the bottom and up the four sides of the bag to create a crisp edges.

13. Top stitch an 1/8" in along all four sides of the bottom edges of the bag to help hold the box shape.

SUEDE Medley

Fabric Collection by **P&B Textiles**



SUE5 301 W



SUE5 301 E



SUE5 301 AU



SUE5 301 O



SUE5 301 LP



SUE5 301 P



SUE5 301 DR



SUE5 301 D



SUE5 301 LB



SUE5 301 SB



SUE5 301 B



SUE5 301 C



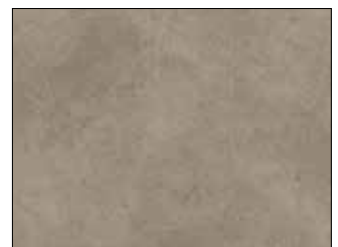
SUE5 301 LG



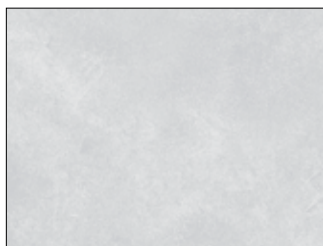
SUE5 301 G



SUE5 301 HG



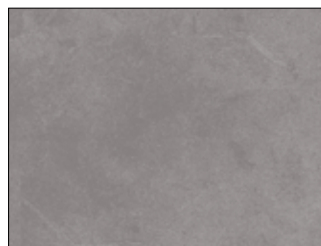
SUE5 301 DS



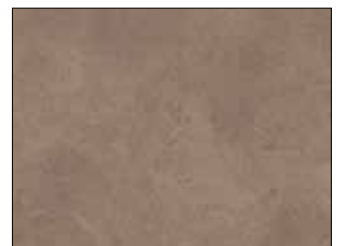
SUE5 301 LS



SUE5 301 SS



SUE5 301 S



SUE5 301 GR



P&B Textiles ♦ www.pbtex.com ♦ 800-351-9087

45-47 Washington St., Pawtucket, RI 02860 ♦ 253 W. 35th St., 11th floor, New York, NY 10001

▲ 100% cotton ♦ Cold wash & dry ♦ 43" / 44" ♦ Colors may vary due to printing process

All fabrics shown at 50% scale.