

Cool Cats

Clowder Quilt and Artist Apron by Stacey Day



Shown using fabrics from the line, **Cool Cats**,
by P&B Textiles



Stacey Day
QUILTS

Cool Cats

Clowder Quilt by Stacey Day

using the Cool Cats collection for P&B Textiles

Quilt Size 57" x 57"

Yardage

Fabric A	26522-MUL1	1 1/2 yards
Fabric B	26523-MUL1	2/3 yard
Fabric C	26525-GOL1	1/3 yard
Fabric D	26525-GRE1	1 yard
Fabric E	26525-ROY1	3/4 yard
Fabric F	26526-CRE1	2 yards
Fabric G	26526-GRE1	1/3 yard
Fabric H	26526-PUR1	1/3 yard
Fabric I	26526-RED1	1/3 yard
Fabric J	26526-ROY1	1/3 yard

Backing 3 3/4 yards of any Cool Cats fabric

Cutting

Strips are cut across the width of fabric unless otherwise stated.

From Fabric A (26522-MUL1), cut:

- (2) 5" x 48 1/2" strips along the length of the fabric for side borders
- (4) 5" by remaining fabric width strips for top/bottom borders

From Fabric B (26523-MUL1), cut:

- (6) 3 1/4" x 42" strips

From Fabric C (26525-GOL1), cut:

- (1) 4 1/4" x 42" strip; cut into (5) 4 1/4" x 5" rectangles
- (1) 2" x 42" strip; cut into (10) 2" squares

From Fabric D (26525-GRE1), cut:

- (1) 4 1/4" x 42" strip; cut into (5) 4 1/4" x 5" rectangles
- (1) 2" x 42" strip; cut into (10) 2" squares
- Cut the remaining fabric into enough 2 1/4" wide diagonal strips to make 240" of bias binding, approx (12) bias strips

From Fabric E (26525-ROY1), cut:

- (11) 1 1/4" x 42" strips
- (1) 4 1/4" x 42" strip; cut into (6) 4 1/4" x 5" squares
- (1) 2" x 42" strip; cut into (12) 2" squares

From Fabric F (26526-CRE1), cut:

- (1) 9 3/8" x 42" strip; cut into (2) 9 3/8" squares, sub cut on one diagonal into (4) Half Square Triangles (HST)
- (1) 9 3/4" x 42" strip; cut into (3) 9 3/4" squares, sub cut on both diagonals to make (12) Quarter Square Triangles (QST)
- (5) 1 1/4" x 42" strips; cut into (40) 1 1/4" x 5" rectangles
- (14) 1 1/4" x 42" strips; cut into (80) 1 1/4" x 6 1/2" rectangles
- (5) 2" x 42" strips; cut into (40) 2" x 5" rectangles
- (4) 1 3/4" x 42" strips; cut into (80) 1 3/4" squares

From Fabric G (26526-GRE1), cut:

- (1) 4 1/4" x 42" strip; cut into (6) 4 1/4" x 5" rectangles
- (1) 2" x 42" strip; cut into (12) 2" squares

From Fabric H (26526-PUR1), cut:

- (1) 4 1/4" x 42" strip; cut into (6) 4 1/4" x 5" rectangles
- (1) 2" x 42" strip; cut into (12) 2" squares

From Fabric I (26526-RED1), cut:

- (1) 4 1/4" x 42" strip; cut into (6) 4 1/4" x 5" rectangles
- (1) 2" x 42" strip; cut into (12) 2" squares

From Fabric J (26526-ROY), cut:

- (1) 4 1/4" x 42" strip; cut into (6) 4 1/4" x 5" rectangles
- (1) 2" x 42" strip; cut into (12) 2" squares

Instructions

All seams are sewn right sides together. Seam allowances are 1/4"

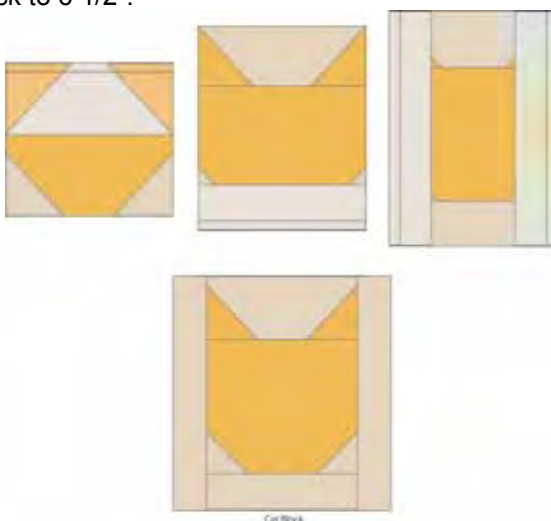
1. Take a Fabric C 4 1/4" x 5" rectangle and pin a pair of Fabric F 1 3/4" squares right side down in the bottom corners of a 5" side as shown. Sew a line from the upper outside corner to the lower inner corner of the 1 3/4" squares. Trim the seam allowance to 1/4", and press towards the Fabric C square to make Unit A. Repeat for all of the Fabric C, Fabric D, Fabric E, Fabric G, Fabric H, Fabric I, and Fabric J 4 1/4" x 5" rectangle to make 40 Unit A pieces.



2. Take a Fabric F 2" x 5" rectangle and pin a pair of Fabric C 2" squares right side down to each end as shown. Sew a line from the upper outside corner to the lower inside corner. Trim the seam allowance to 1/4", and press towards Fabric C to make Unit B. Repeat for all of the Fabric C, Fabric D, Fabric E, Fabric G, Fabric H, Fabric I, and Fabric J 2" squares to make 40 Unit B pieces.



3. Sew a Fabric C Unit B piece right sides together (RST) to the top of a Fabric C Unit A piece as shown. Press towards Unit A, and then sew a Fabric F 1 1/4 x 5" rectangle to the bottom of Unit A. Press, and then sew a pair of Fabric F 1 1/4" x 6 1/2" rectangles to each side of Unit A to make a Cat Block. Trim and square the Cat Block to 6 1/2".



4. Repeat the previous step with all of the Fabric C, Fabric D, Fabric E, Fabric G, Fabric H, Fabric I, and Fabric J Unit A and Unit B pieces to make (40) Cat Blocks.



5. Sew the Fabric E 1 1/4" x 42" strips short ends together to make a long strip. Press and cut into (8) 1 1/4" x 54" accent borders strips. Fold the accent border strips RST lengthwise and press well.

6. Repeat step 5 with Fabric B 3 1/4" x 42" strips and cut into (4) 3 1/4" x 54" borders.

7. Sew two Fabric A 5" by remaining fabric width strips together and trim to make the 5" x 57 1/2" outer top border. Repeat with the second pair of strips to make the outer bottom border.

Quilt Assembly

8. Referring to the layout diagram, sew the Cat Blocks together into diagonal rows, paying careful attention to the fabric placement and orientation of each block. Press the Even rows to the left, and the Odd rows to the right.

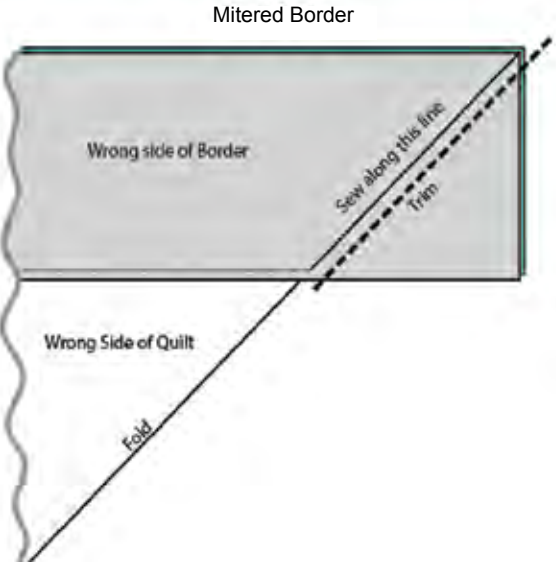
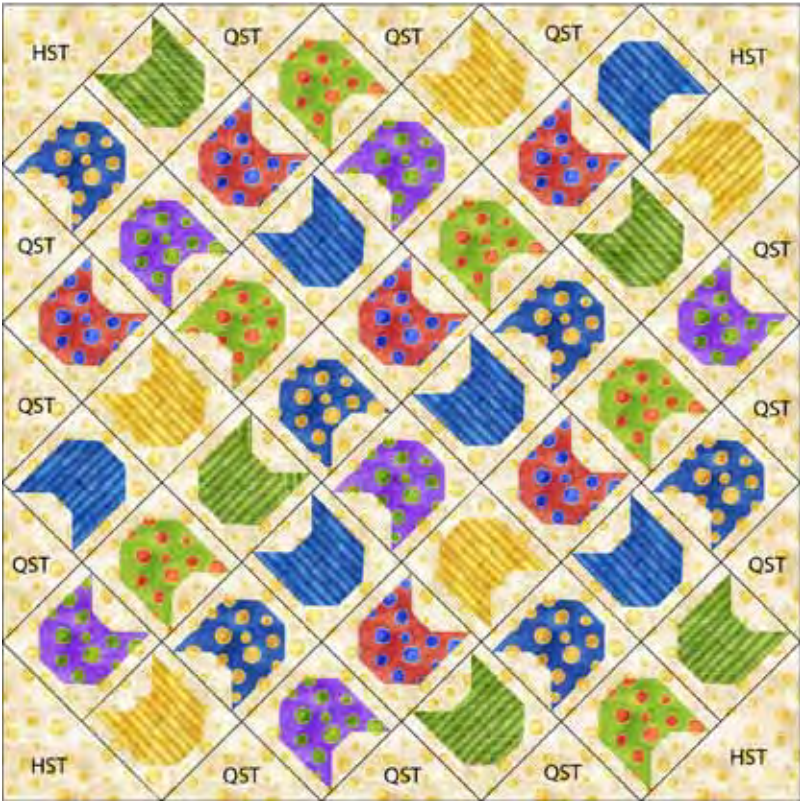
9. Sew the diagonal rows together, matching seam allowances carefully. Sew the Fabric F 9 3/8" HST to each corner to make the finished quilt center. Press the seam allowances toward the HST.

10. Baste a pair of Fabric E Accent strips to the long sides of each Fabric B inner border, matching the raw edges. Treat as a single piece.

11. Sew the Fabric B/E inner borders to each side of the quilt center, matching centers and starting/stopping the stitching 1/4" from each side of the quilt center. Press borders out. Using the diagram on the next page as a reference, miter the inner border corners, matching the accent strips carefully. Trim seams to 1/4". Press corner seams open.

12. Sew the Fabric A 5" x 48 1/2" outer borders to the sides of the quilt. Press, then sew the 5" x 57 1/2" borders to the top and bottom of the quilt and press again.

13. Layer the quilt top with 65" x 65" batting and backing pieces; baste. Quilt as desired. Join the Fabric D 2 1/4-wide binding strips using diagonal seams, and then sew around the quilt top. Turn the binding to the back and secure in place by hand or machine. Label and enjoy!



Cool Cats

Artist Apron by Stacey Day

using the Cool Cats collection by P&B Textiles

One Size Fits Most Adults

Yardage

Fabric A	26522-MUL1	3/8 yard
Fabric B	26524-WHI1	1 3/8 yard
Fabric C*	White Solid	1 1/8 yard

*This Fabric is used for lining. You may substitute the White Solid for a lightweight woven interfacing.

Printing Pattern Pieces

The pattern pieces for this project are included in this PDF as an oversize page. Print the pattern using the instructions below, and tape the pages together. Cut each pattern piece out around the solid line.

To print the pattern pieces:

- Open the PDF file in the free Adobe Reader X, Acrobat X Standard, or Acrobat X Professional.
- Go to the Print dialog (File > Print) and select Tile Large Pages as the Page Scaling option, in the Page Handling section.
- Check the Cut Marks option to prints marks on individual tiles, and check the Labels option to print date and tile coordinates on individual tiles. Both these options assist in assembling tiles after printing.
- Select your desktop printer and print. - See more at: <http://blogs.adobe.com/tcs/2011/01/how-to-print-documents-with-large-page-size-on-regular-printer.html#sthash.sLry11GY.dpuf>

Cutting

All pattern pieces are cut right side up from a double layer of fabric unless specified. Please refer carefully to each pattern piece before cutting.

From Fabric A (26522-MUL1), cut:

- (3) 2 3/4" x 42" strips

From Fabric B (26524-WHI1), cut:

- (1) Apron Front
- (2) Armhole Facing
- (1) 12" x 17" Pocket rectangle

From Fabric C (White Solid), cut:

- (1) Apron Front for lining

Before Getting Started

Read through the instructions carefully. Seam allowances are 1/2", unless otherwise noted. Topstitching is done 1/8" from the edge of a piece. RST=Right Sides Together

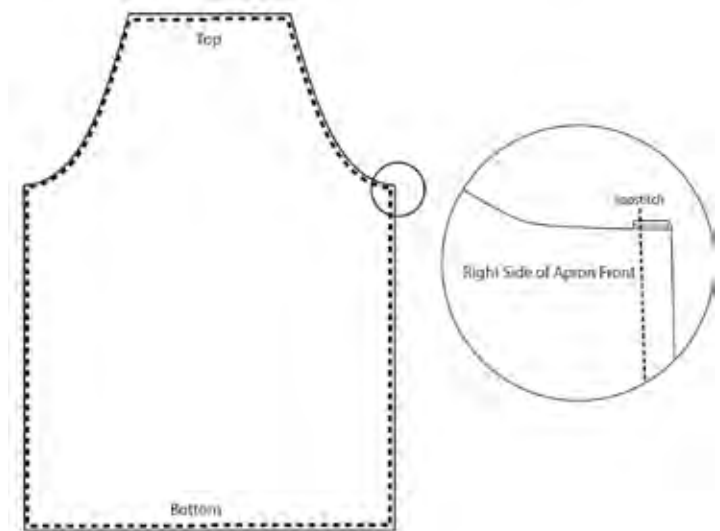
Apron Construction

1. Sew the Fabric A 2 3/4" strips together using diagonal seams to create one long piece.

2. Sew the long raw edges RST using a 1/4" seam allowance, then turn the long piece right side out and press flat. Set aside for the neck/waistband piece.

3. Pin the Fabric B and Fabric C Apron Front pieces wrong sides together. Baste around the edges. Treat as a single piece.

4. Turn the sides of the Apron Front under 1/4", and then 1/4" again and topstitch. Repeat for the top and bottom to finish the Apron Front hems.

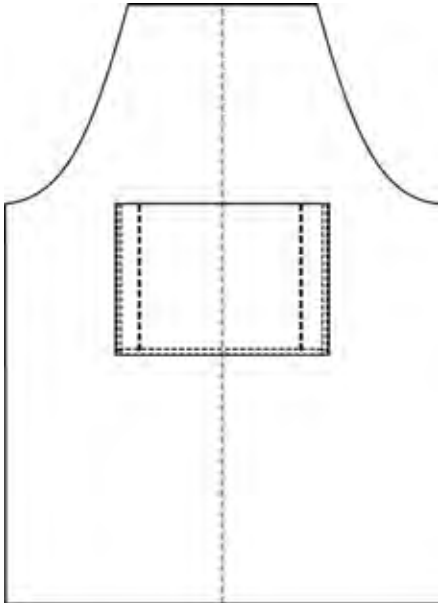


5. Fold the Fabric B 12" x 17" rectangle in half as shown, wrong sides together. Sew down each side and across the bottom using a 1/4" seam allowance, leaving a 2" opening for turning. Trim the corners and turn the piece right side out. Turn opening edges in. Press flat to make the Pocket.



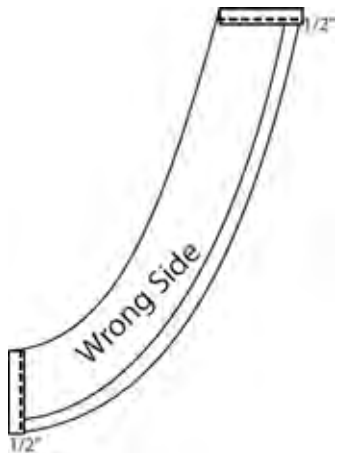
6. Fold the Apron Front and Pocket in half to mark the centers. Pin the Pocket to the right side of the Apron Front, matching centers, so that the top folded edge of the Pocket is aligned with the bottom of the armholes as shown. Topstitch around the sides and bottom of the Pocket, and then sew a second line of stitching 1/4" from the first to secure the Pocket to the Apron Front.

7. Measure 1" from each side of the pocket and draw a line down. Topstitch on each of the lines to divide the pocket into three sections.

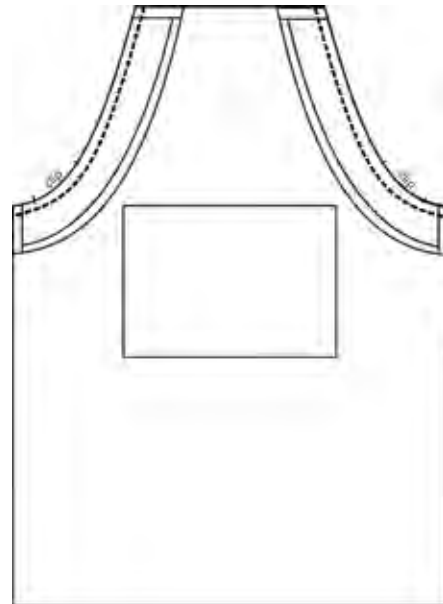


8. Turn and press the outside curve of each Armhole Facing 1/2" to the wrong side.

9. Turn the top and bottom edge of each armhole facing 1/2" to the wrong side. Press and stitch across the bottom of each turned raw edge to secure.



10. Pin and sew the Armhole Facings to the Apron front RST, matching the curves and ends. Clip the inside curves, and then press the Armhole Facings to the Apron lining.



11. Topstitch around the curve of the Apron Front, and then again around the pressed curve of the Armhole Facing to secure it to the Apron lining. This creates a channel for the Neck/Waistband.

12. Feed the Neck/Waistband Strap up through one Armhole Facing channel and then down the other, leaving about 12" above the top of the Apron. Try on the Apron, adjusting the Neck/Waistband Strap as needed and tying the waistband as normal. You may wish to trim the ends if they are too long.

13. Turn the ends of the Neck/Waistband Strap under 1/2", then 1/2" again, and topstitch across each fold to finish.



Cool Cats

Fabric Collection by **P&B Textiles**



26522 - MUL1 Shown at 15% scale.



26524 - WHI1 Shown at 15% scale.*



26525 - GRE1



26525 - GOL1



26525 - ROY1



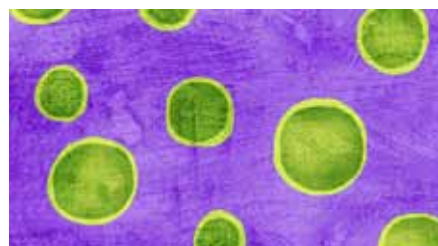
26523 - MUL1



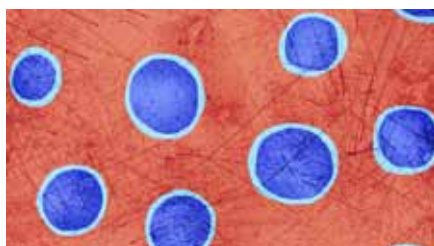
26526 - CRE1



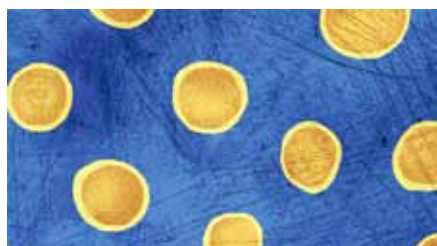
26526 - GRE1



26526 - PUR1



26526 - RED1



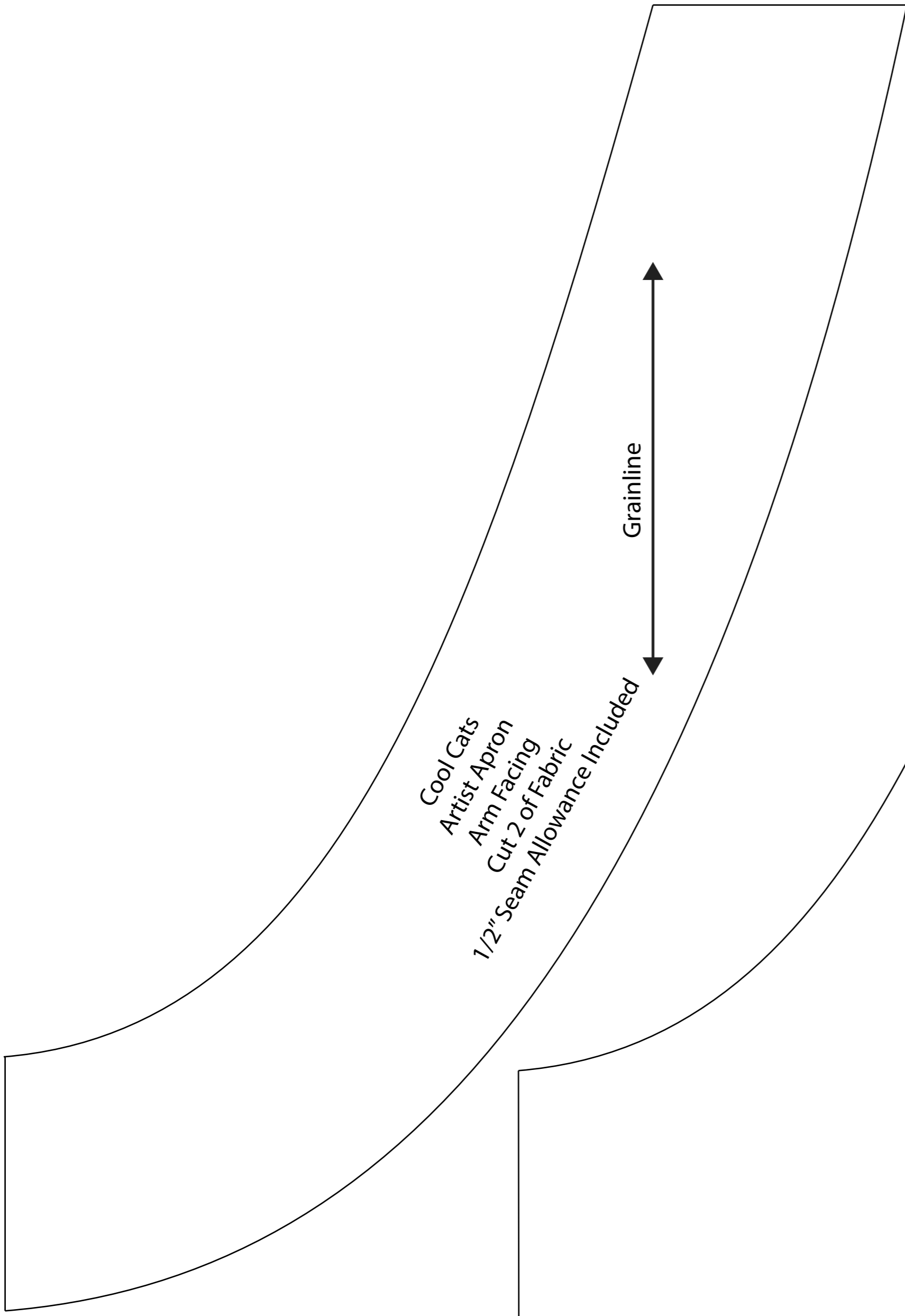
26526 - ROY1

Cool Cats Style # 4690

All images shown at 50% scale, unless noted.

* Not used in quilt.

4/2016



Cool Cats
Artist Apron
Arm Facing
Cut 2 of Fabric
1/2" Seam Allowance Included



Grainline

Cool Cats
Artist Apron
Cut 1 on Fold of Fabric B
Cut 1 on Fold of Lining Fabric C
1/2" Seam Allowance Included

Place on Fold