



**T.REX IS MY
TAXI DRIVER**



1

GENRE

Action, Sci-Fi, Fantasy

MEDIAMovie
Game
Comic**PRODUCTION**

Muffin Express

LOGLINE

On a future Earth where genetically engineered dinosaurs inhabit the planet, humans and the giant lizards must maintain a tenuous relationship in order to prevent the wholesale destruction of Earth.

TRANSMEDIA SYNOPSIS

Earth, 2237 A.D. The world has been overrun by genetically engineered dinosaurs. Intelligent, fierce, massive. The dinosaurs and humans have learned to cooperate to survive, but the world has become a much dangerous place since their revival. Rogue carnivores roam the streets looking for their next meal and splinter factions of anti-Dino humans engage in terrorist strikes against dinosaur homes and businesses.

One taxi driver, Tyrannosaurus A. Reximus is one of the brave few willing to travel the dangerous roads in Post-Dino Earth. He is committed to getting his passengers safely to their destinations, humans, dinosaurs and herbivores alike.

Our story revolves around Mr. Tyr. A. Rex, a decorated military veteran who has decided to hang up his weapons in favor of protecting those who are unable to properly protect themselves. Tyr has seen atrocities committed against those who were not deserving of such violence and is now fully dedicated to the pursuit of peace, order and safe transportation.



2

MOVIE

T.REX IS MY TAXI DRIVER

GENRE

Action, Sci-Fi, Fantasy

THEMES

Love
Loss
Order vs. Chaos
Sacrifice

MOVIE TREATMENT

T.REX IS MY TAXI DRIVER is a science-fiction fantasy adventure, set in a futuristic dystopian version of the planet Earth.

SUMMARY

In the bleak future, a cab driver unwittingly becomes the central figure in the search for a legendary cosmic weapon to keep the evil Mr. Brachi M. Saurus from taking over the planet.

Mostly set in the twenty-third century, the film's central plot involves the survival of planet Earth, which becomes the responsibility of Tyr Reximus, a taxicab driver and former Special Forces major, after a young woman falls into his cab. Tyr joins forces with her to recover four mystical bones essential for the defense of Earth against an impending attack.

THEMES

The film embodies the primary themes of love, loss, order vs. chaos and personal sacrifice. Tyr must come to terms with the fact that he must break his pact of non-violence and make great personal sacrifices in order to save the women he loves and prevent the planet from falling into ruin at the hands of malevolent forces.

CHARACTERS

Tyrannosaurus A. Reximus – Tyr Reximus is a tyrannosaurus rex and hardened Special Forces veteran turned cab driver. He has eschewed a life of violence and combat for one of peace, protecting others and safely transporting them to their destinations.

Trilila C. Tops – Trilila is a young human female with a mysterious past. She has no known relatives and speaks with a strange accent. It is believed that she has travelled from a time before the Earth was overrun by the genetically modified dinosaurs.

Mr. Brachi M. Saurus – Mr. Brachi M. Saurus is an eccentric brachiosaurus billionaire. He is the head of a conglomerate that owns most of the world's major consumer goods companies. Mr. Saurus has a dark side, however, he has been quietly raising capital and power in order to obtain a weapon that can wipe out all humans and carnivores from the planet, once and for all.

STORY SYNOPSIS

The story begins with a nightmare flashback, our protagonist is reliving one of the bloodiest battles of his military career. He watches, helplessly, as his best friend dies in his arms... once again. A rogue shell comes streaking down from the sky, directly at Tyr, exploding – he wakes up suddenly, he is back in his taxi.

As he starts the engine and begins to leave the parking structure, he gets a call, it's a new fare. It's just around the corner, Tyr hits the accept button and proceeds to follow the coordinates displayed on his cab's HUD. As he is pulling up to the destination, he hears gunfire, followed by breaking glass. Worried that he is experiencing another flashback, he looks all around him. Broken shards of glass come raining down from above, pelting his cab. The glass is followed by a loud thump, as the hovering cab bobs and wavers. Startled, he looks up through the moon-roof to see a girl gripping tightly onto the cab exterior.

He opens the moon roof to allow her inside, cautious not to move the cab and accidentally dislodge her. She drops into the back seat and as she sees Tyr, she screams, "Please, we have to get out of here! I don't care where you take me, as long as it's anywhere but here!"

Without asking any questions from the obviously distressed girl, Tyr slams on the accelerator and takes off.

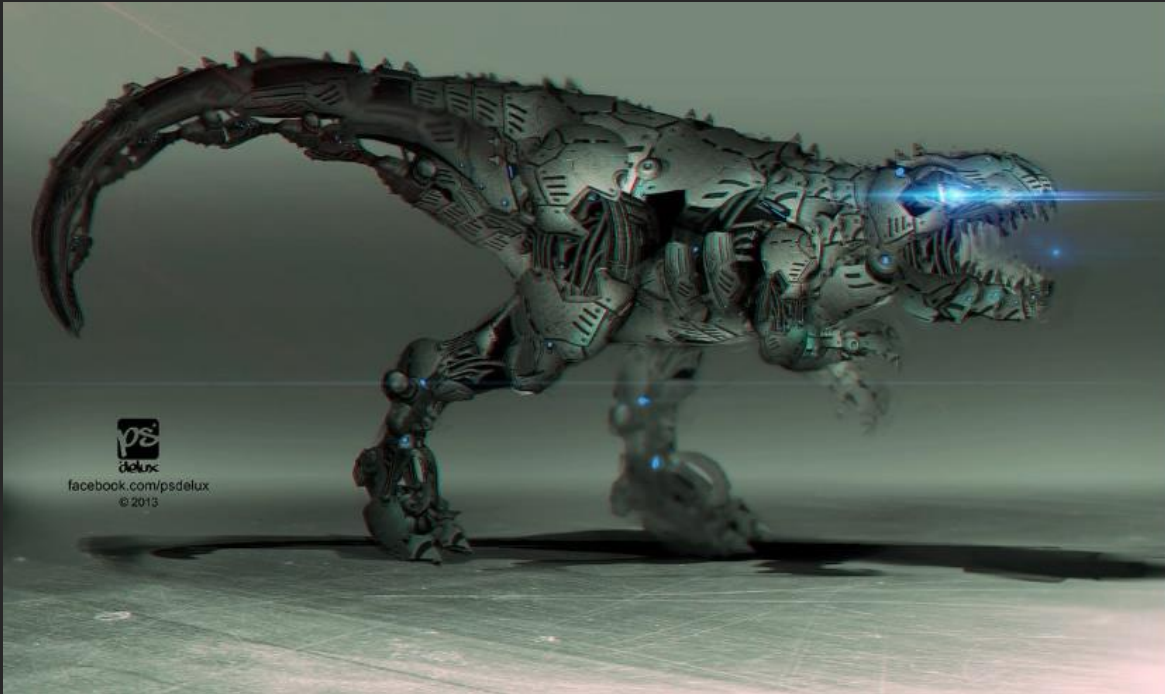
He does not yet realize it, but Tyr has just picked up an experimental human subject from one of the secret "Black Labs" run by the shadowy Brachi Corporation.

Tyr will be swept up into a global conspiracy the likes of which no one has ever seen before. It is up to him and his new human companion to discover the truth behind the Brachi corporation, the experiments and whatever schemes they have

been concocting in the secret lab.

With the human holding the keys to all of the secret, she and Tyr must find a way to unlock the information and get it into the right hands – stopping the Brachi corporation before they can execute on their plans to wipe out the planet.





3

GAMET.REX IS MY TAXI DRIVER:
RAAAWWRR!**GENRE**

Board Game

PLATFORMS

Board Game

GAME SYNOPSIS

The board game is focused on delivering the experience of what it is like to be Tyr as he makes his way around the megapolis, unearthing clues and transporting Trilila to various destinations. All the while, Tyr and Trilila have to evade the city police and Brachi Corp goons who will be cooperating to chase them down. Tyr must avoid being cornered and mix up his route enough that the police cannot guess his desired destination and back him into a corner.

UNIQUE SELLING POINTS

- Experience what it is like to be a T.Rex driving a taxi cab.
- Brachi Corp police must cooperate to take down the fugitive.
- Futuristic dystopian city scape to drive around in.
- Expandable with new locations and vehicle packs.

GAMEPLAY EXAMPLE

Players take turns in a clockwise fashion. The first player to move is the T.Rex, he secretly pulls a pick up and drop off location from a deck of cards. These indicate which spots on the board he must travel to in order to successfully complete a mission. The T.Rex will pick a card, then roll the dice to determine the amount of tiles they can move – this number is amplified by the base movement modifier provided by their vehicle.

Police cars will take the same actions, with the exception of pulling cards, they will attempt to coordinate to predict where the T.Rex is currently headed. If the police are able to coordinate successfully, they will attempt to cut off the streets that the T.Rex could potentially use to escape.

If all escape routes are blocked, the T.Rex has the opportunity to perform an escape maneuver, ramming into one of the cop cars and attempt to destroy it. If the T.Rex and a cop car collide, they perform a roll off. If the T.Rex wins, he

sends the cop car back to base and is able to move through. If the cop wins, however, they capture the T.Rex and the game ends. The T.Rex tallies his points based on how many missions were successfully completed, then the deck is reshuffled and the next player in clockwise order takes on the role of the T.Rex.

At the conclusion of all four players functioning as a T.Rex, the player who earned the highest number of points is crowned the winner of the game.

CONTROL SCHEME

Players control their car on a square game board composed of a grid of tiles which are meant to emulate a metropolitan street layout. Players use dice and cards to determine movement rate and direction across the board.

ANTICIPATED RELEASE DATES

☒ North America on Q1/2015

☒ Europe/RoW on Q2/2015

LOCALIZATIONS

☒ English ☒ Spanish ☒ Japanese ☒ German ☒ French ☒ Other languages: TBD

DEPTH OF PLAY

The game has one board and two decks composed of sixty cards each. The game is infinitely replayable and sets of expansion cards and game boards will be available in the future.

ANTICIPATED RATINGS

Short sentence explaining the elements and themes that will result in the anticipated ratings.

US(ESRB) ☐ EC ☒ E ☐ T ☐ M ☐ AO

UK (ELSPA/VSC) ☐ 3+ ☒ 11+ ☐ 15+ ☐ 18+

Germany (USK) ☐ All ☒ 6+ ☐ 12+ ☐ 16+ ☐ 18+

France (SELL) ☒ All Public ☐ 12+ ☐ 16+ ☐ 18+



4

COMIC

T.REX IS MY TAXI DRIVER

GENRE

Action, Sci-Fi, Fantasy

THEMES

Love
Loss
Order vs. Chaos
Sacrifice

COMIC SYNOPSIS

The comic series will be comprised of twelve issues that tell the backstory of Tyr, including how dinosaurs came to rule the planet, his military background and how he eventually came to be a taxi driver. The comic series will be divided into three parts, each containing four issues.

Part One will detail the rise of the dinosaurs, starting as a lab experiment to genetically engineer desirable traits into humans. The lab experiments go awry when the test animals, lizards, are inadvertently mutated into super intelligent dinosaurs through corruption of the genetic material.

Part Two will detail Tyr's early life and childhood, the death of his parents, and his relationship with his siblings. Part Two will conclude with him preparing to join the military.

Part Three will detail Tyr's early years in the military as a cadet, following his meteoric rise through the ranks and into the Special Forces division. Part Three will conclude with the death of Tyr's best friend and the decline of his military career, his deep depression, and turnaround which leads to eventually switching focus completely into becoming a cab driver.

All three parts will eventually culminate into a collected Graphic Novel version of the series.



5

ACILLARY
T.REX IS MY TAXI DRIVER
VIRTUAL PET

MEDIA
Mobile

PARTNERS
Third-Party Developer

ANCILLARY MEDIA

To be released alongside the film will be a mobile game that will allow players to raise their own super-intelligent dinosaur pet on their smartphone.

Players can raise their dinosaur from an egg, through childhood and school, and eventually into one of many different possible career paths. Gameplay will be similar to a mobile version of the popular *The Sims* franchise.

The app will be supported by cosmetic IAP options, but IAP will not be required to enjoy the full game experience.



6

GLOSSARY
Morphology

ELEMENTS
Rules of the World

OBJECTS
Locations
Races
Characters

GLOSSARY

Location: Post-Dino Earth, 23rd Century

Races: Humans, Dinosaurs (Carnivores, Herbivores, Omnivores), LIAMs (Low-Intelligence Autonomous Machines)

Significant Entities: Tyr. Reximus, Trilila, Brachi M. Saurus, Brachi Corporation, JDHSF (Joint Dinosaur-Human Special Forces)