

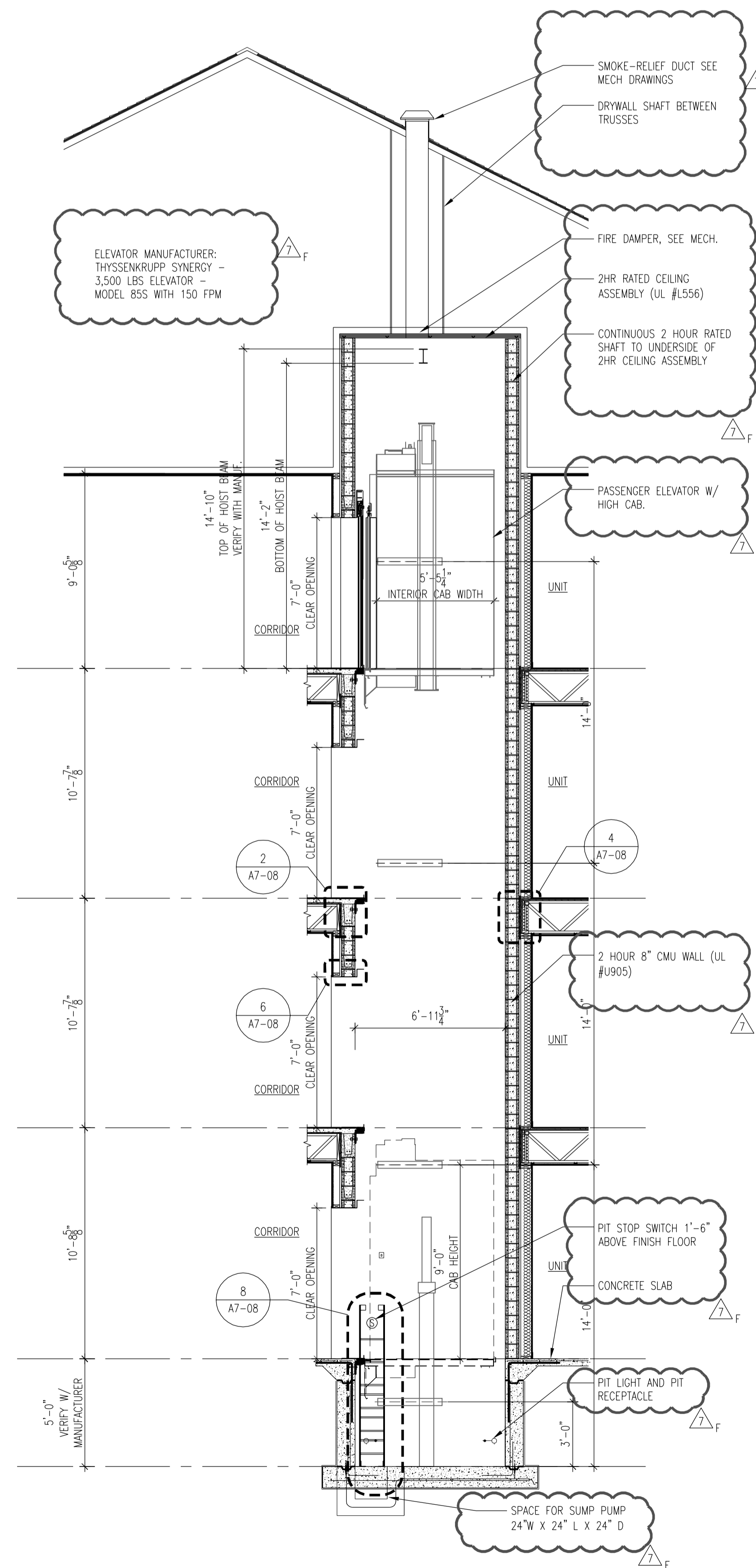
**REVISION 2 SUMMARY**

- A. PERMIT COMMENTS
- B.

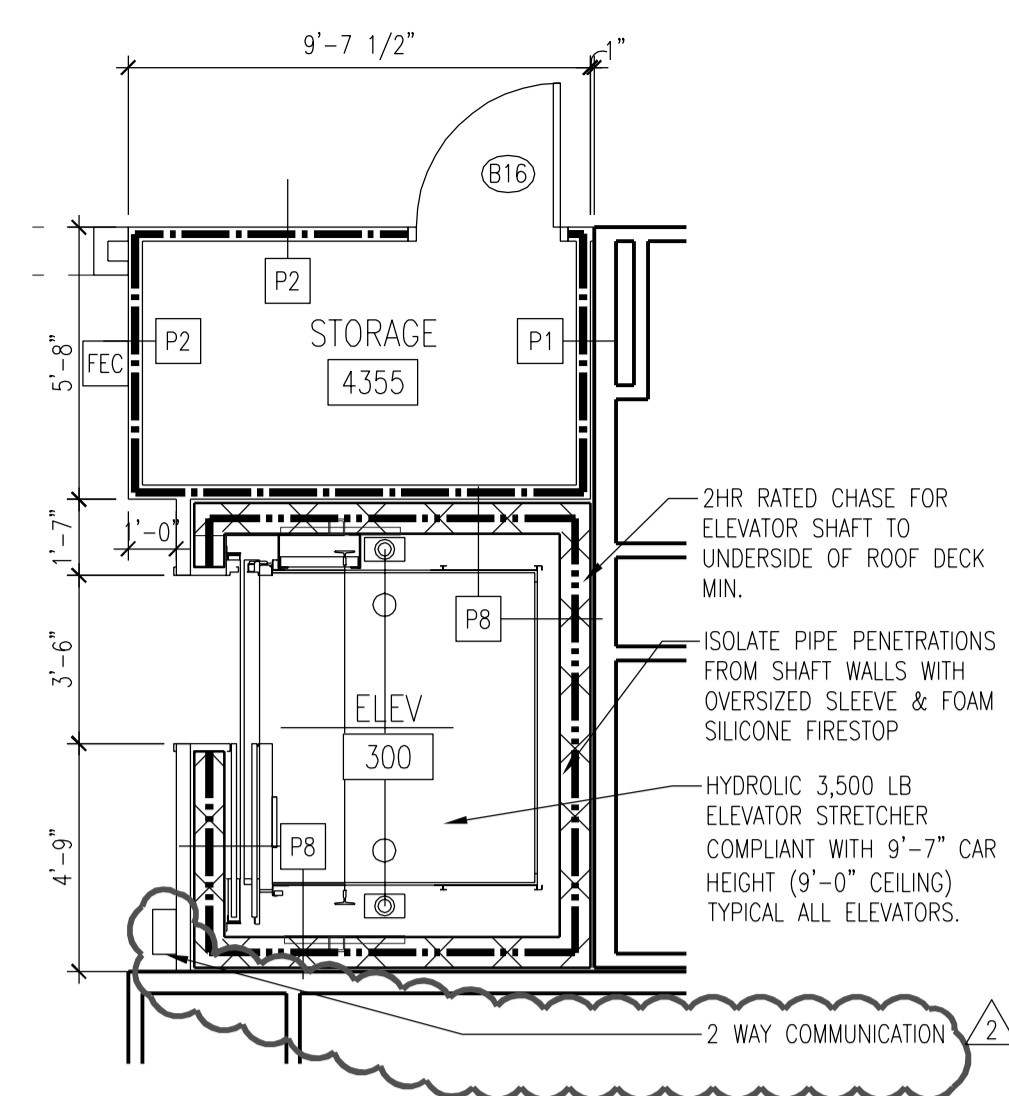
FOR CONSTRUCTION DATED: 04.09.2014

**REVISION 7 SUMMARY**

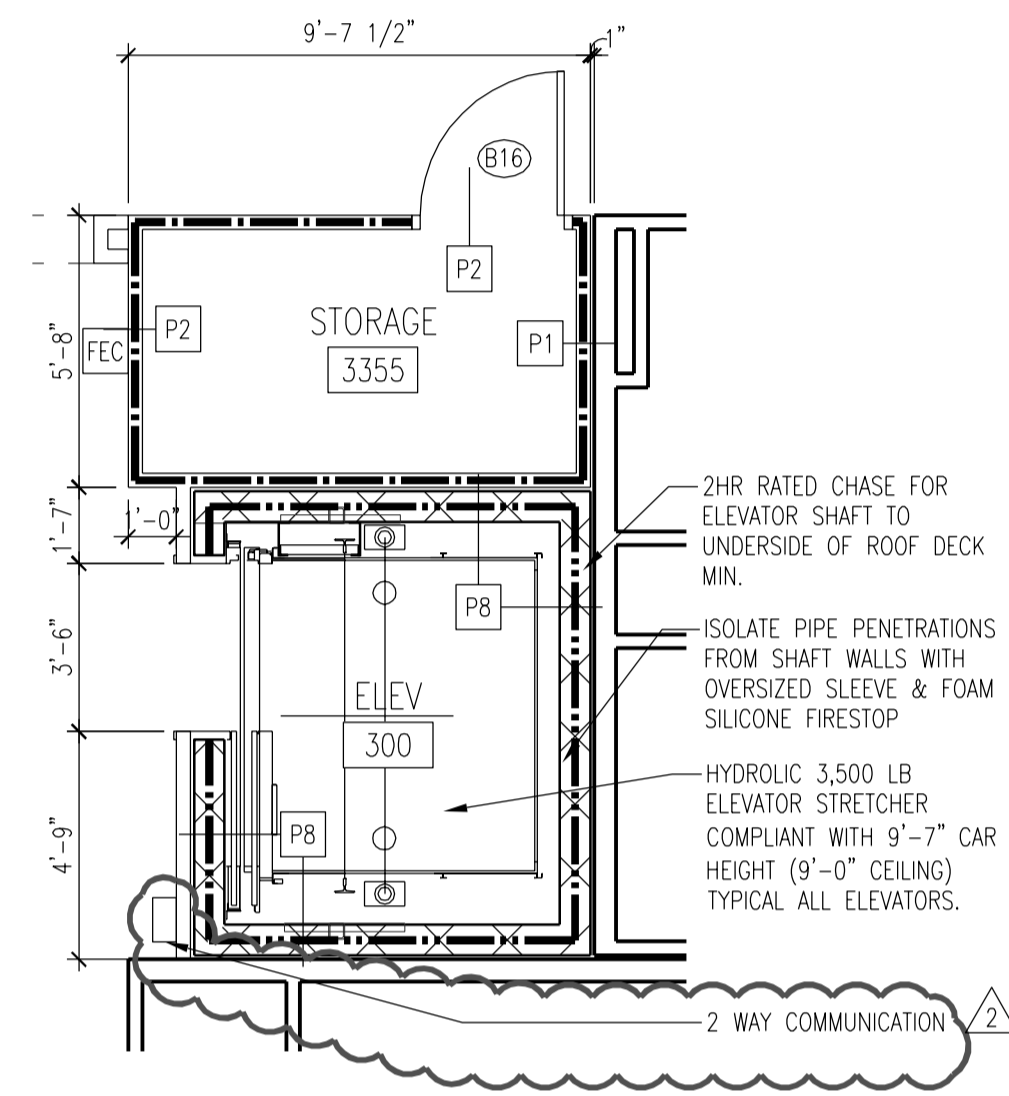
- A. BID RFI COORDINATION
- B. FINAL I.D. COORDINATION & VE COORDINATION
- C. ENERGY CODE REVISION
- D. CLARK VE COORDINATION
- E. LANDSCAPE VE COORDINATION
- F. ELEVATOR COORDINATION



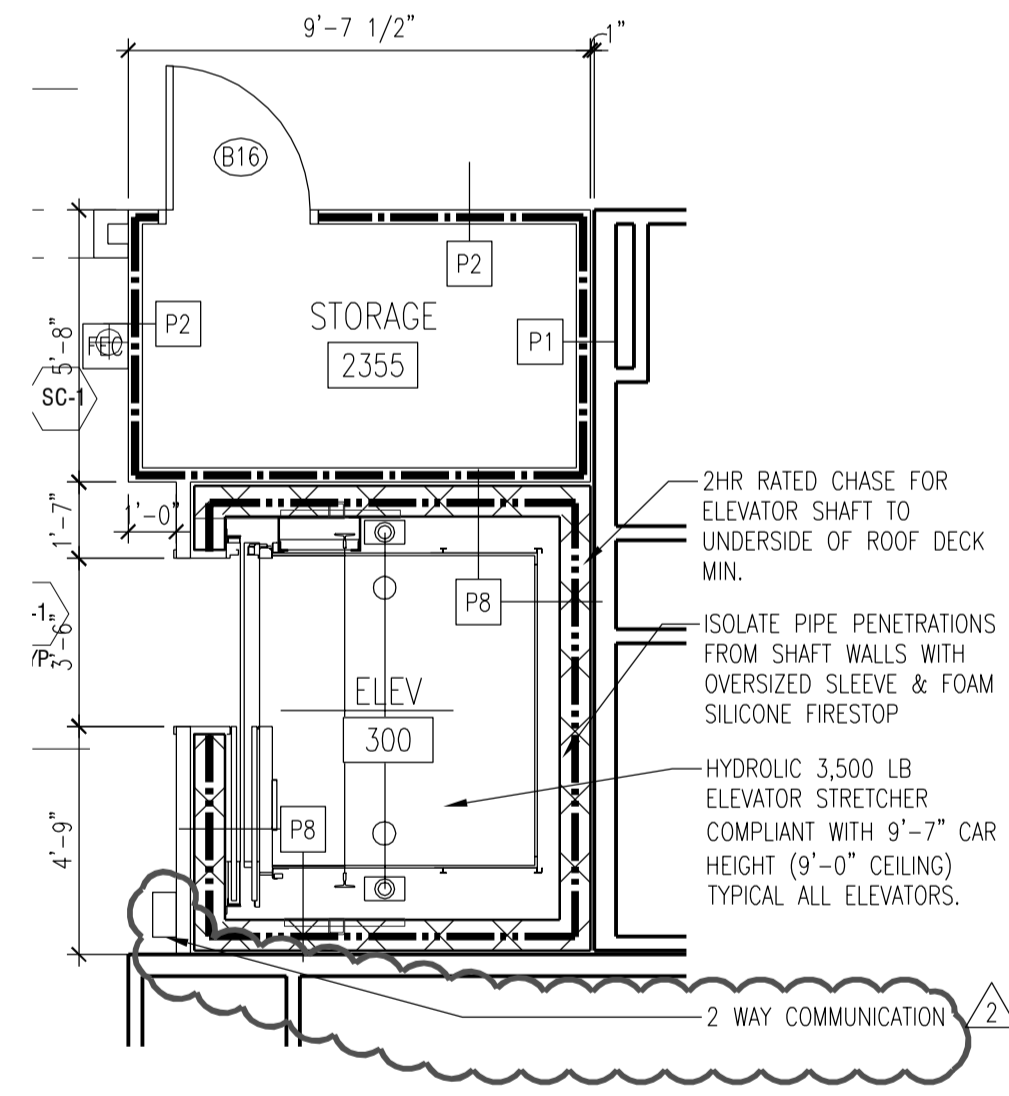
**13** TYP. ELEVATOR SECTION  
 SCALE: 1/4" = 1'-0"



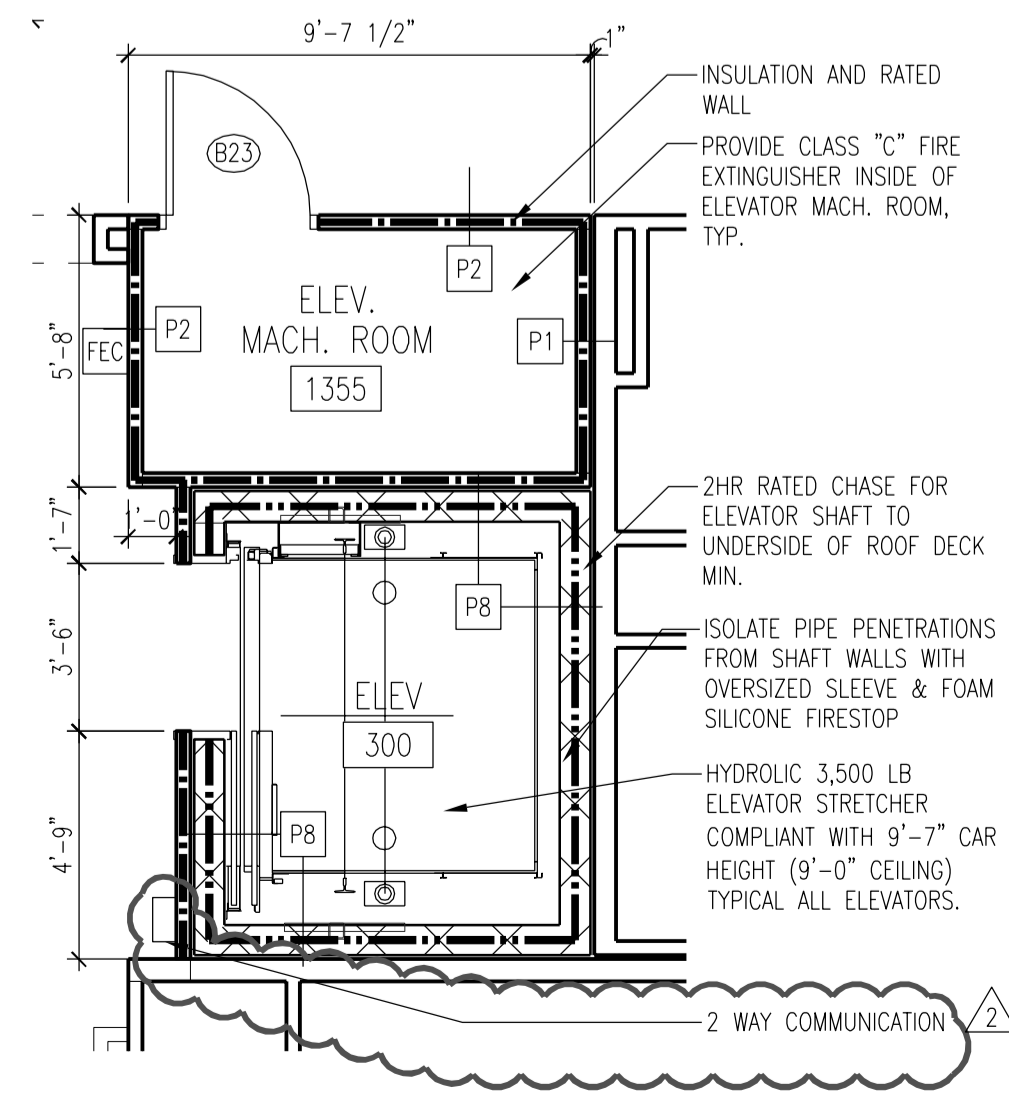
**12** ELEVATOR 300 LEVEL 04  
 SCALE: 1/4" = 1'-0"



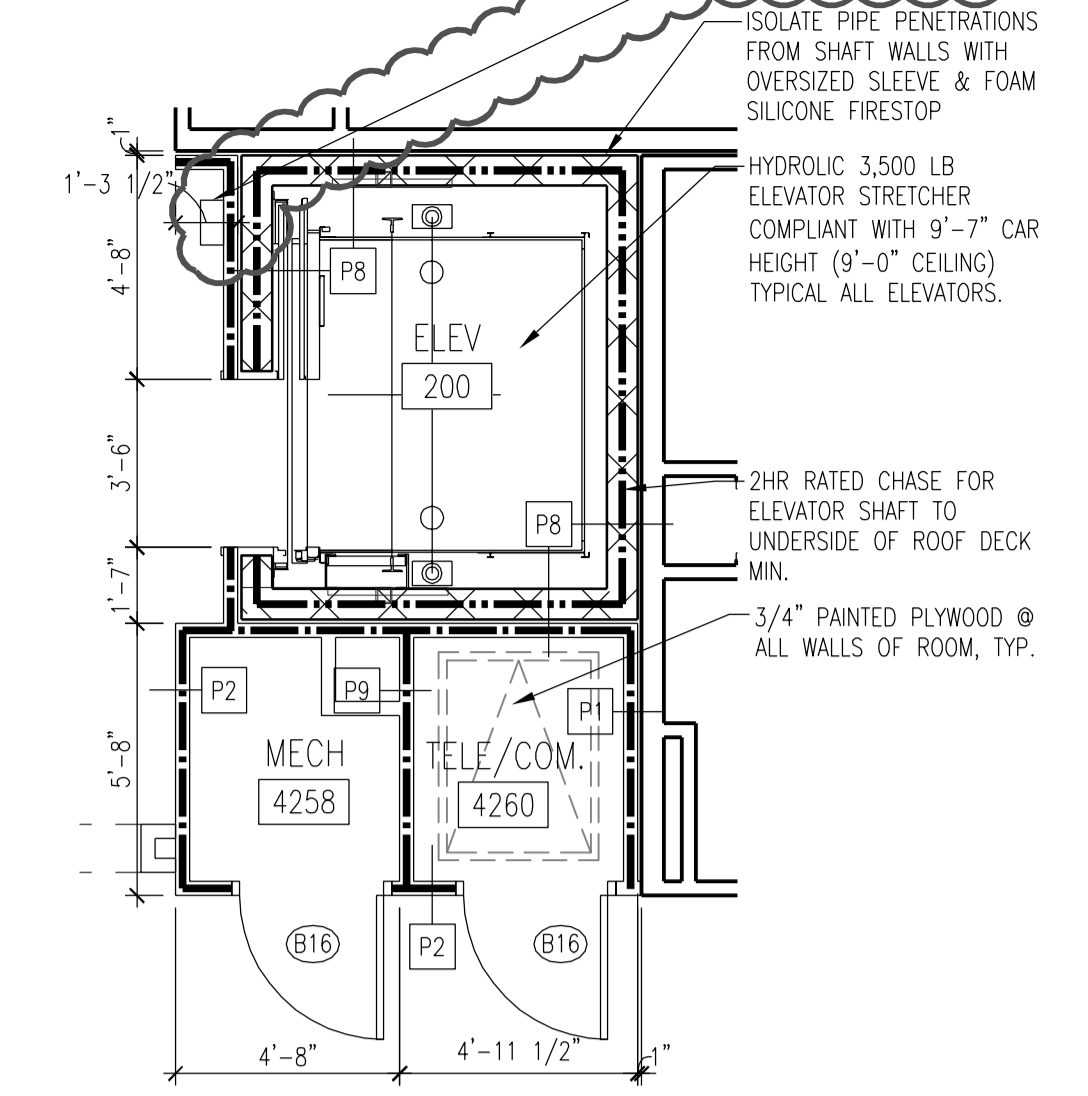
**11** ELEVATOR 300 LEVEL 03  
 SCALE: 1/4" = 1'-0"



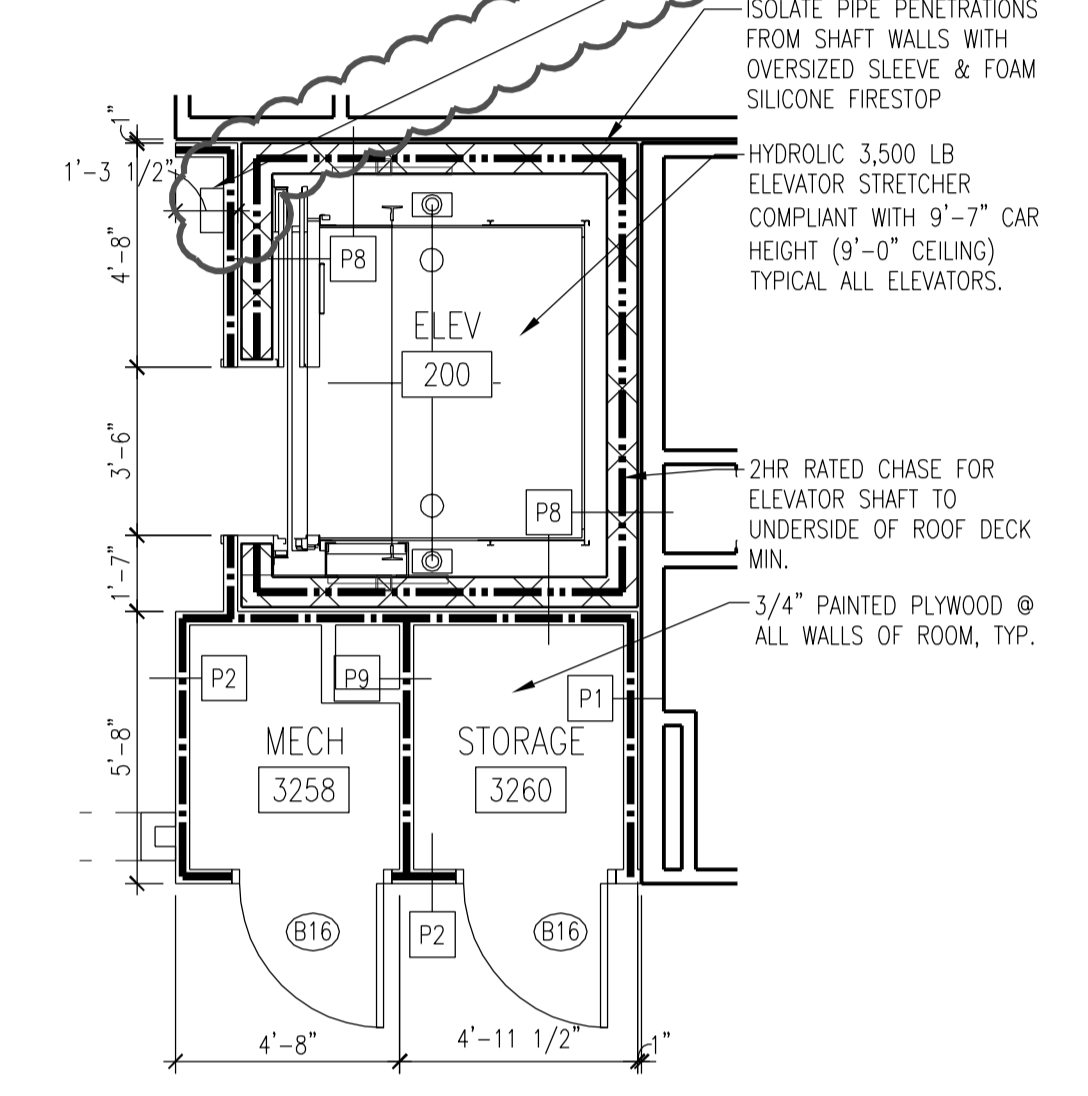
**10** ELEVATOR 300 LEVEL 02  
 SCALE: 1/4" = 1'-0"



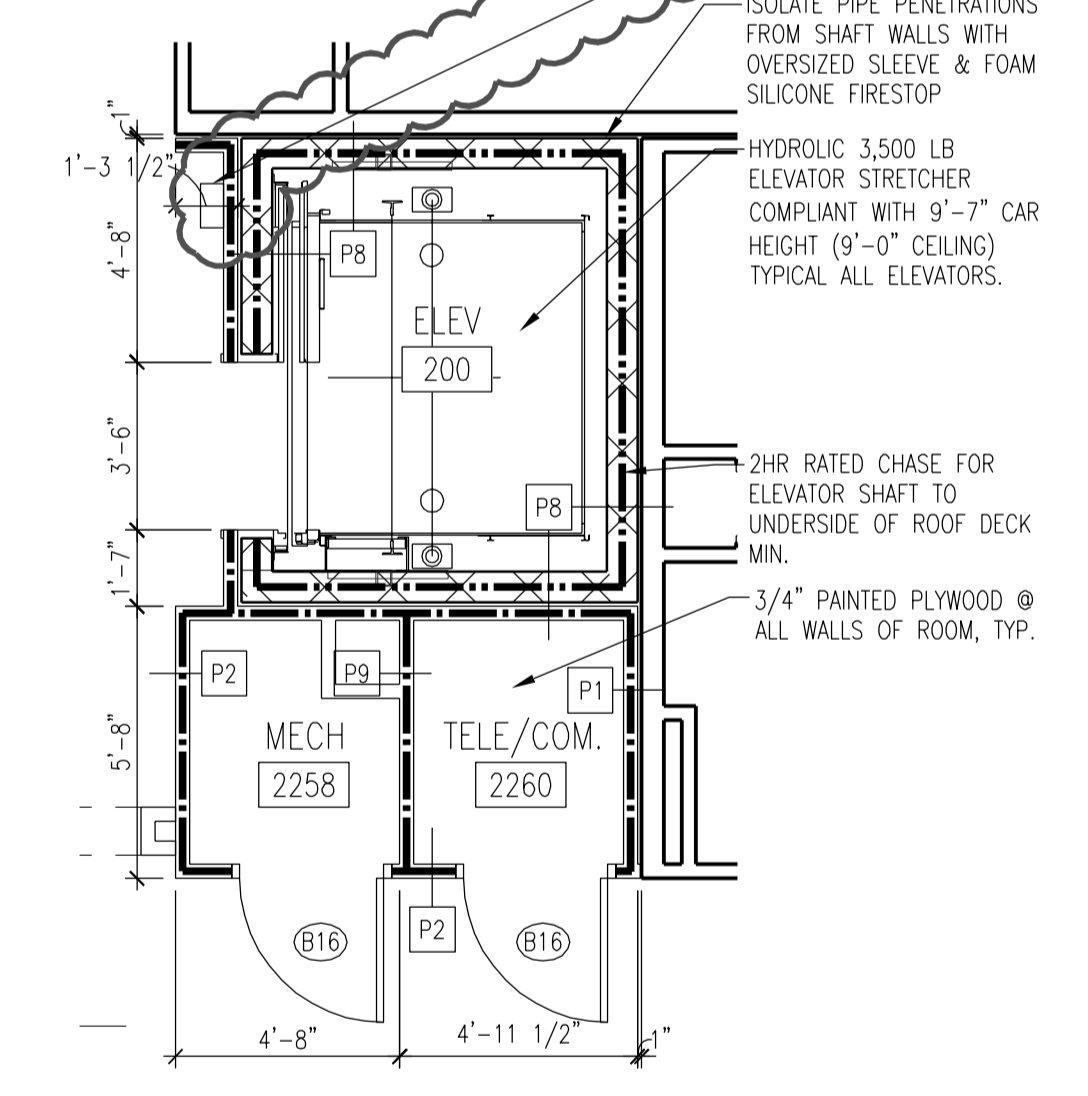
**9** ELEVATOR 300 LEVEL 01  
 SCALE: 1/4" = 1'-0"



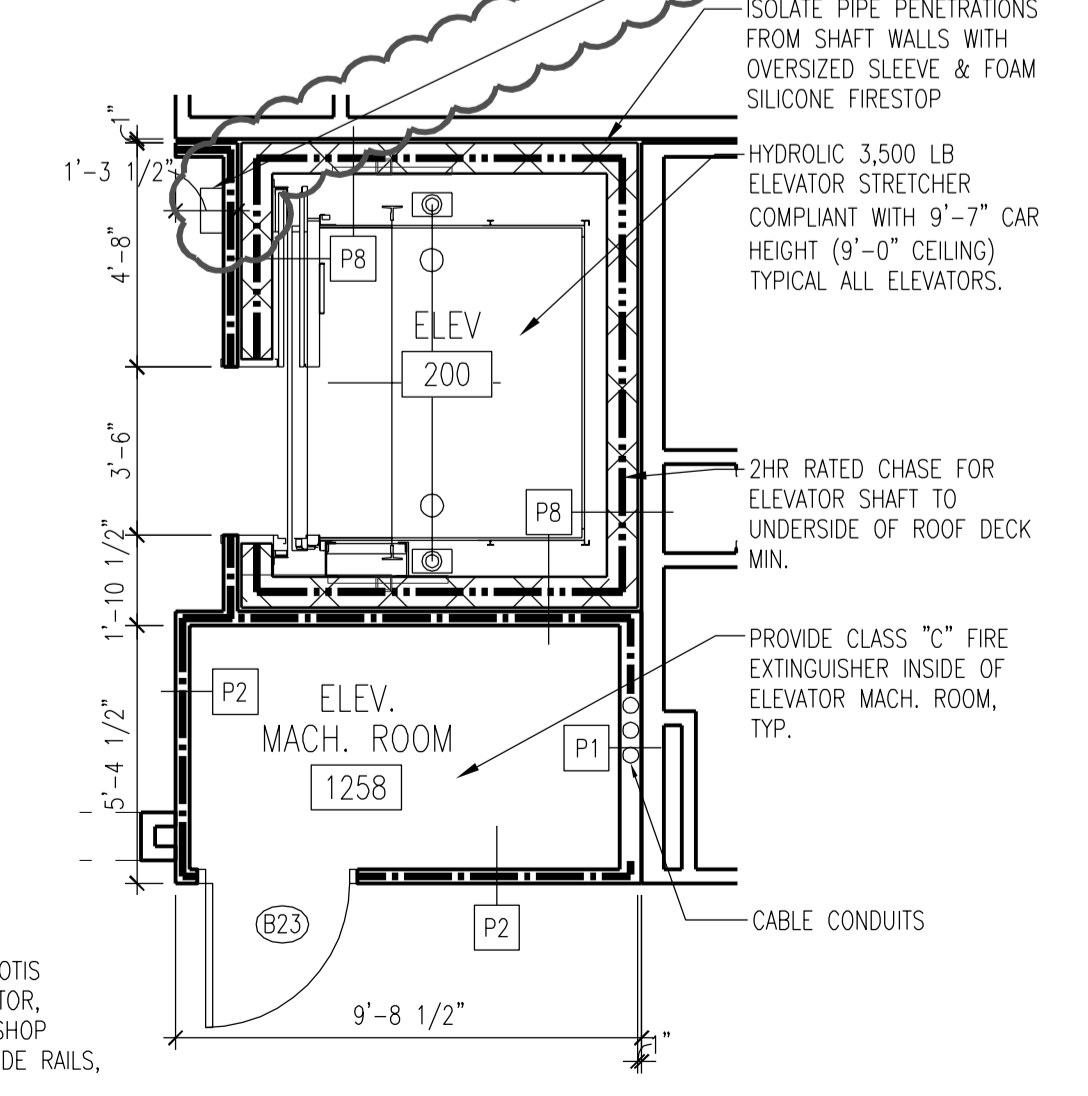
**8** ELEVATOR 200 LEVEL 04  
 SCALE: 1/4" = 1'-0"



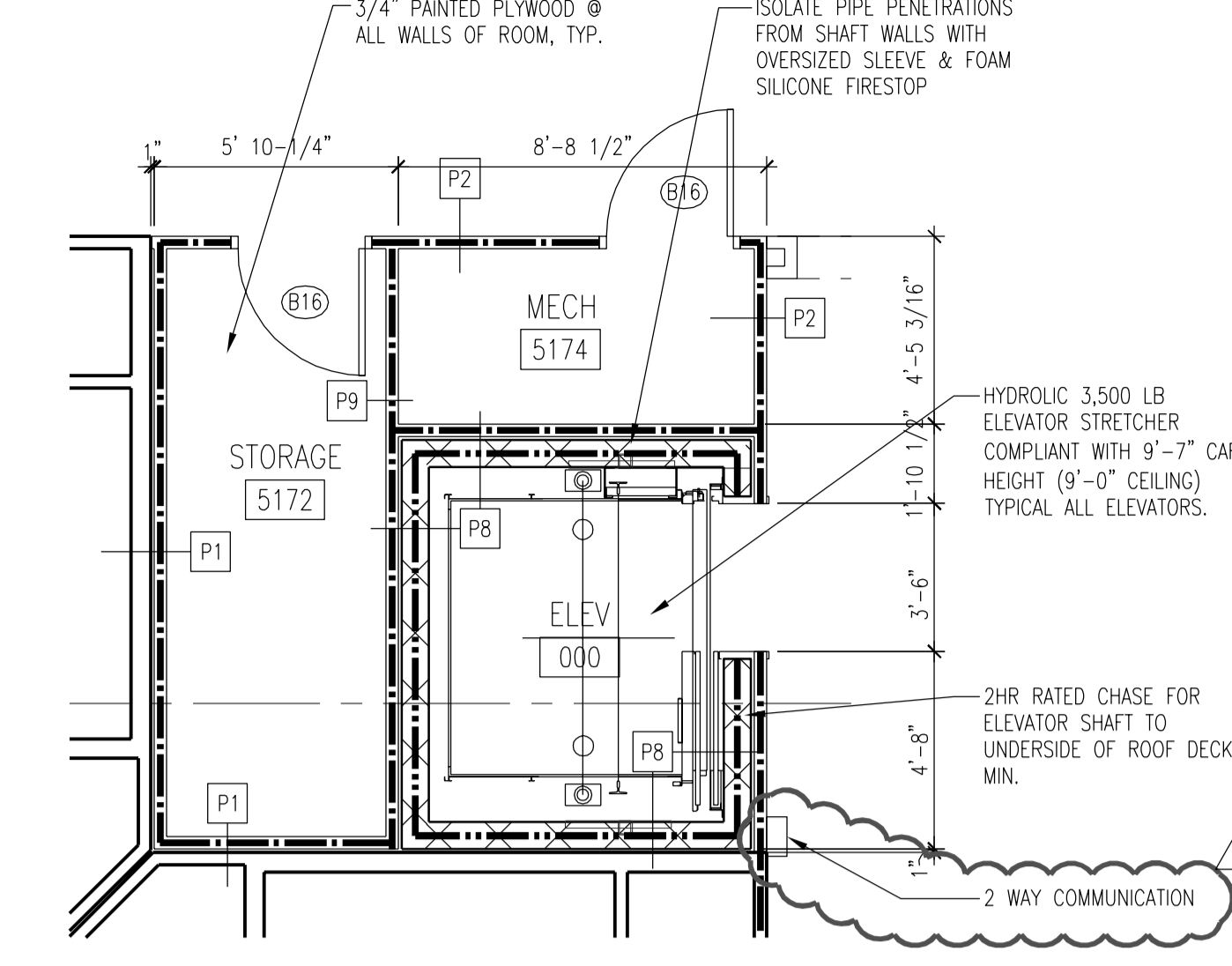
**7** ELEVATOR 200 LEVEL 03  
 SCALE: 1/4" = 1'-0"



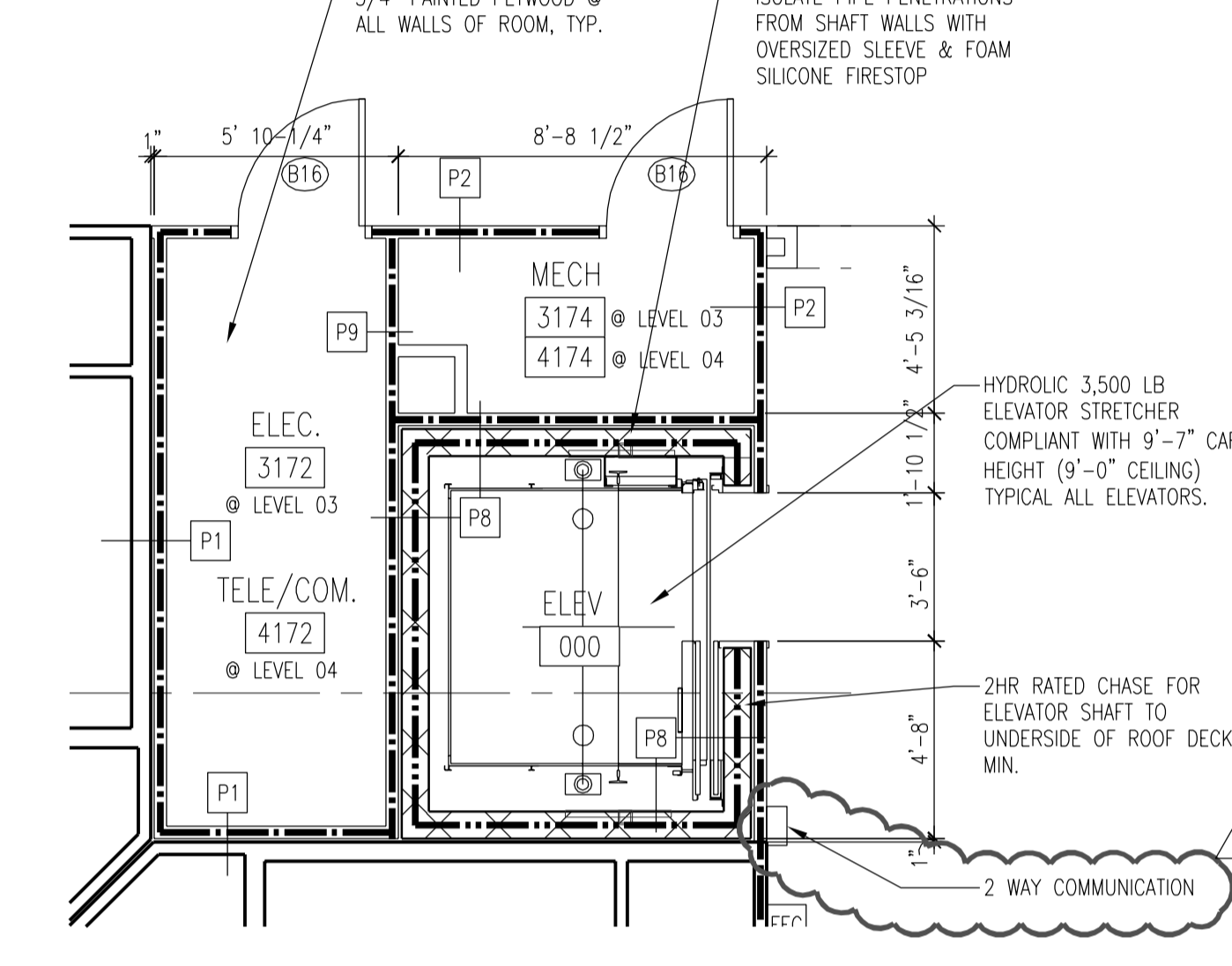
**6** ELEVATOR 200 LEVEL 02  
 SCALE: 1/4" = 1'-0"



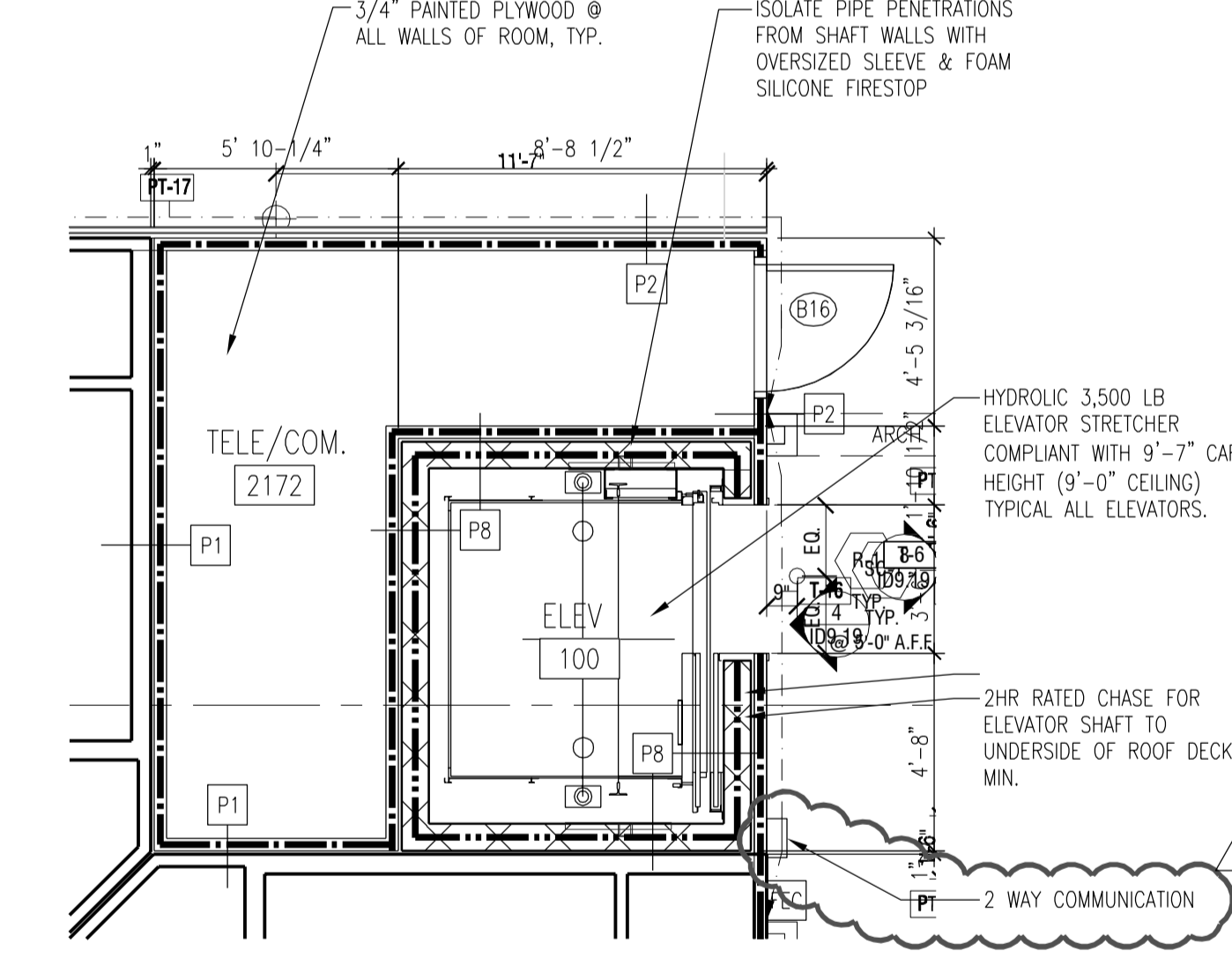
**5** ELEVATOR 200 LEVEL 01  
 SCALE: 1/4" = 1'-0"



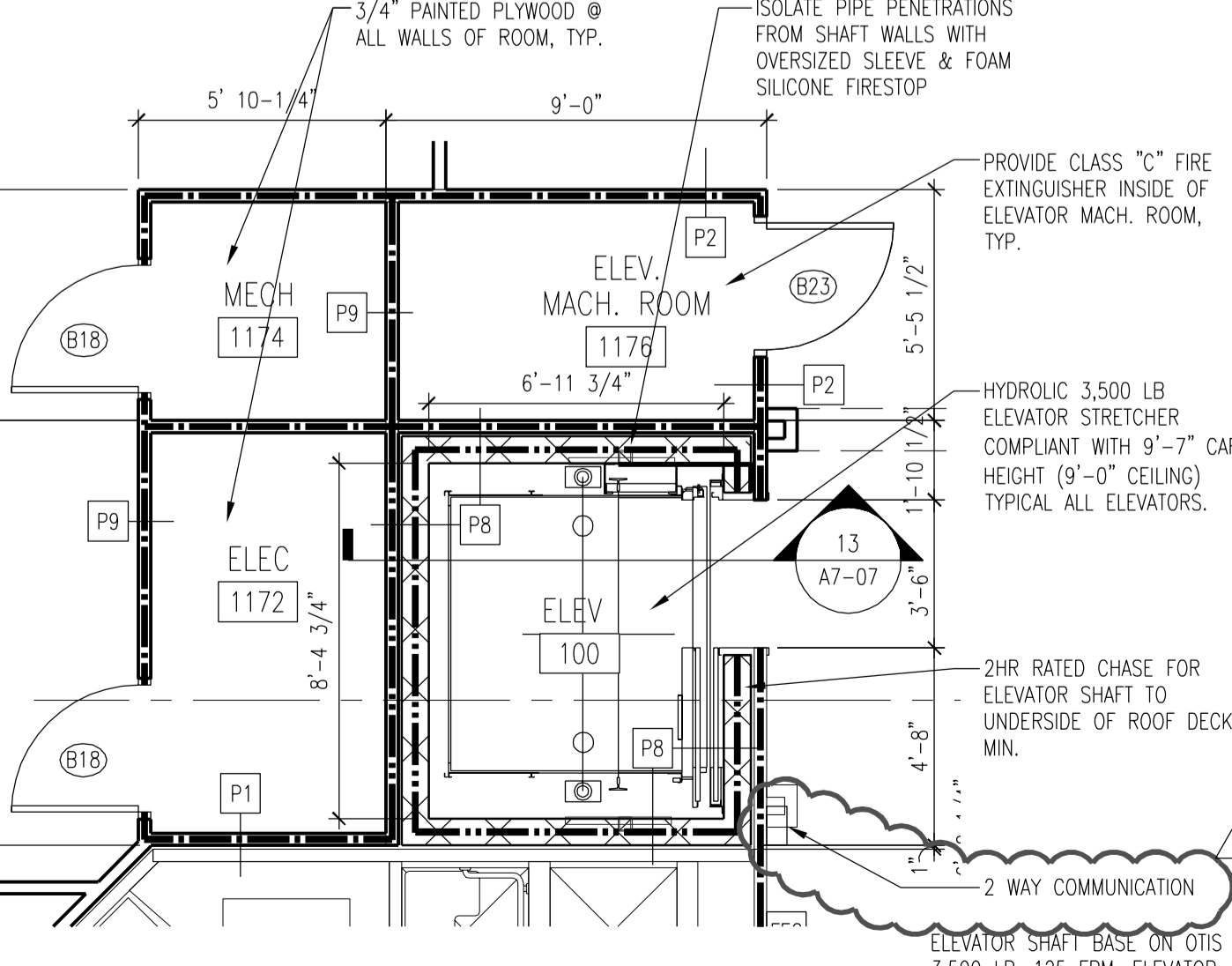
**4** ELEVATOR 100 LEVEL 05  
 SCALE: 1/4" = 1'-0"



**3** ELEVATOR 100 LEVEL 03 & 04  
 SCALE: 1/4" = 1'-0"



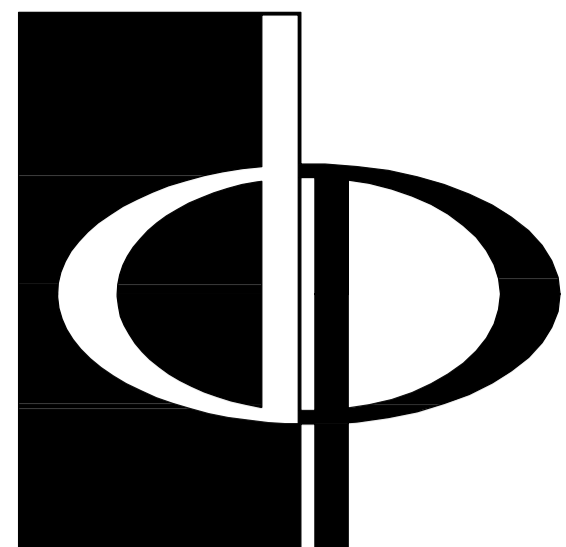
**2** ELEVATOR 100 LEVEL 02  
 SCALE: 1/4" = 1'-0"



**1** ELEVATOR 100 LEVEL 01  
 SCALE: 1/4" = 1'-0"

ELEVATOR SHAFT BASE ON OTIS 3,500 LB. 125 FPM. ELEVATOR. REFER TO MANUFACTURER SHOP DWGS. FOR LOCATION OF SIDE RAILS, BRACKETS, AND PLUNGER

ELEVATOR SHAFT BASE ON OTIS 3,500 LB. 125 FPM. ELEVATOR. REFER TO MANUFACTURER SHOP DWGS. FOR LOCATION OF SIDE RAILS, BRACKETS, AND PLUNGER



**THE PRESTON PARTNERSHIP, LLC**  
 A MULTI-DISCIPLINARY DESIGN FIRM

8245 BOONE BLVD. SUITE 320  
 VIENNA, VIRGINIA 22182  
 TELEPHONE: 571 405 2700  
 FAX: 571 405 2701

WWW.THEPRESTONPARTNERSHIP.COM

CONSULTANT

SEAL



PROJECT  
**Odenton Town Center**

Anne Arundel County  
 Maryland

FOR

**Novus Residences, LLC**

A Cafritz Interests Company  
 1660 L Street, NW, Suite 600  
 Washington, DC 20036  
 202-446-0649

PRINTED  
 CONSTRUCTION ISSUE 09/06/2013

REVISIONS  
 ADDENDUM #2 11/20/13  
 VE COORDINATION 02/24/14

DATE 09/23/2013

JOB NUMBER 1118101

DRAWN BY TEAM

CHECKED BY

SHEET TITLE  
**ELEVATOR PLAN & SECTION**

SHEET NUMBER  
**A7-07**

COMMENTS

ISSUED FOR CONSTRUCTION

0201