

A Torted Up Pineapple

Study #2

by Janna L Thomas

Quilt size: 66½" x 66½" unfinished top
(16) 12½" x 12½" (large) unfinished blocks
(24) 6½" x 6½" (small) unfinished blocks
(30) 3½" x 6½" rectangles for sashing
(9) 6½" x 12½" rectangles for sashing

Skill Level: Confident Beginner

Yardage

Black 5 5/8 YD

Cream 3 3/8 YD

Backing

Whole cloth 74 ½" x 74 ½" or

Pieced 4 1/4 YD (2) 38 ½" x 74 1/2"

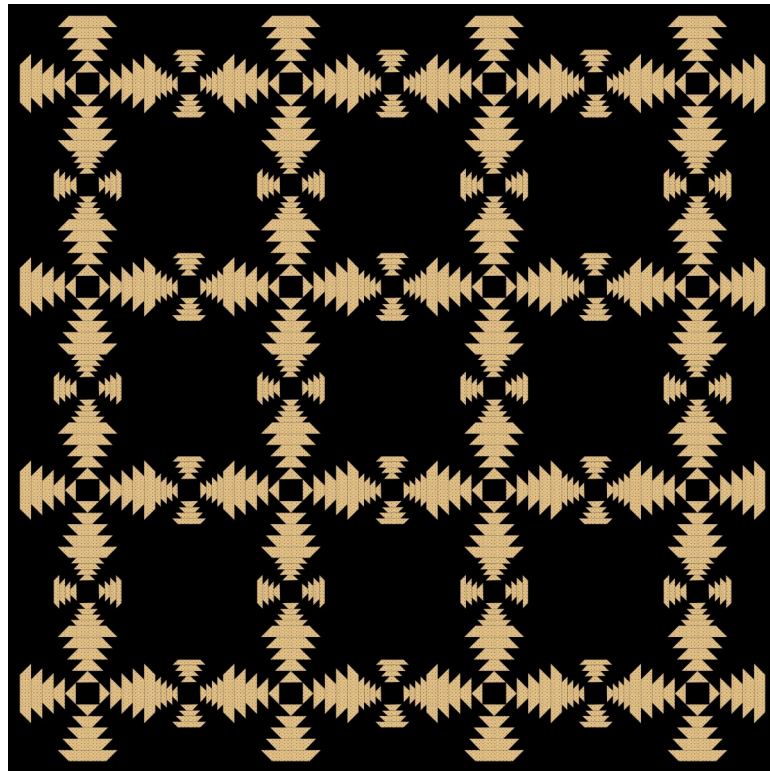
Batting

74 ½" x 74 ½" or Full size in package

Binding 5/8 YD

(8) strips *up to* 2 1/2" wide for flat fold binding

Ruler: Bloc Loc Pineapple Ruler with 1/2" & 1" finished size strips



A Torted Up Pineapple Study #2

by Janna L Thomas © 2016 All Rights Reserved

Large Block Cutting List

Round 1: Speedy Method (see instructions on page 3)

(1) 2 1/2" x wof black
(6) 1 5/8" x wof cream

Round 2:

(32) 1 5/8" x 3 3/8" black
(32) 1 5/8" x 4 1/2" black

Round 3:

(64) 1 5/8" x 4" cream

Round 4:

(64) 1 5/8" x 4 1/2" black

Round 5:

(64) 1 5/8" x 4 1/2" cream

Round 6:

(64) 1 5/8" x 5 1/2" black

Round 7:

(64) 1 5/8" x 5 1/2" cream

Round 8:

(64) 1 5/8" x 6 1/2" black

Round 9:

(64) 1 5/8" x 6 1/2" cream

Round 10:

(32) 5 3/4" x 5 3/4" cut in half diagonally to yield (64) oversized corner triangles

"wof"—full width of fabric

Small Block Cutting List

Round 1: Speedy Method (see instructions on page 3)

- (1) 1 1/2" x wof black
- (6) 1 1/8" x wof cream

Round 2:

- (48) 1 1/8" x 1 7/8" black
- (48) 1 1/8" x 3 1/8" black

Round 3:

- (48) 1 1/8" x 2 1/2" cream
- (48) 1 1/8" x 3" cream

Round 4:

- (48) 1 1/8" x 3" black
- (48) 1 1/8" x 3 1/2" black

Round 5:

- (96) 1 1/8" x 3 1/4" cream

Round 6:

- (96) 1 1/8" x 3 1/2" black

Round 7:

- (96) 1 1/8" x 3 1/2" cream

Round 8:

- (96) 1 1/8" x 3 3/4" black

Round 9:

- (96) 1 1/8" x 4" cream

Round 10:

- (48) 3 1/4" x 3 1/4" black squares cut in half diagonally to yield (96) oversized corner triangles

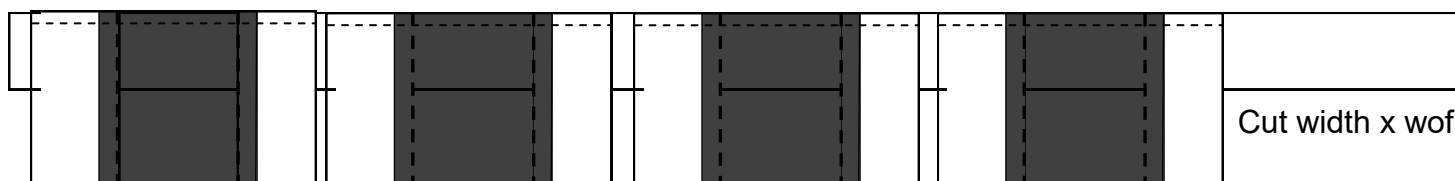
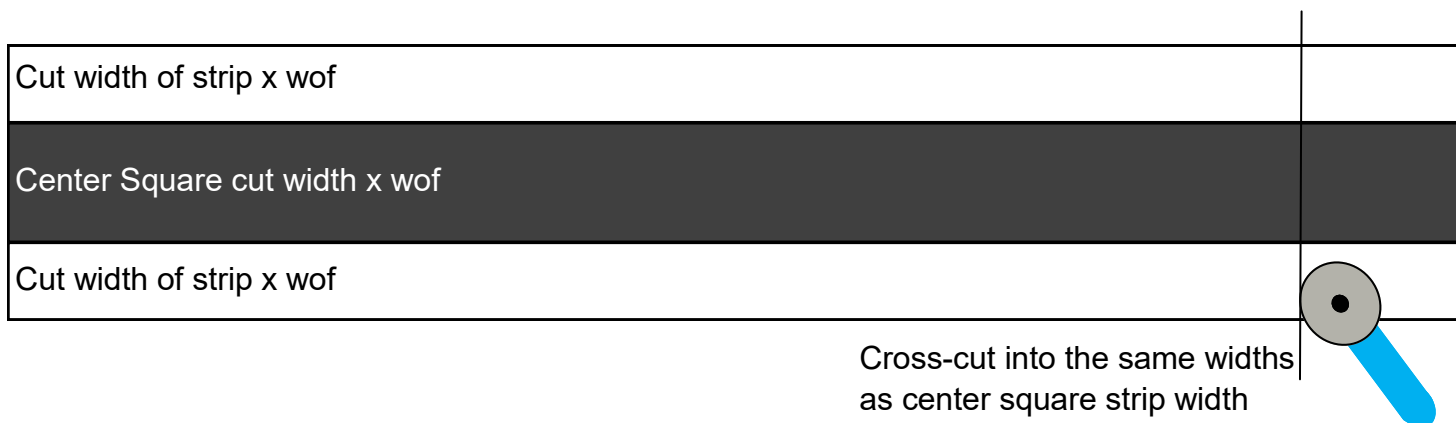
Videos are available at www.blocloc.com that instruct on how to use the Bloc Loc Pineapple Ruler.

Speedy Method for Square in a Square (starting point of block)

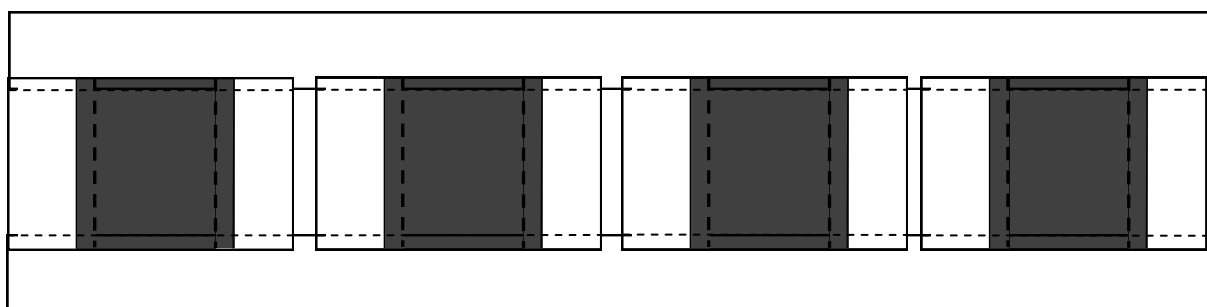
Choose this method if using the same fabric. It is faster to complete the initial square in a square and produces more waste.

Round 1 starts as a square in a square. Cut (2) strips for your size pineapple strips x wof (cream) fabric and (1) strip for center square x wof (black—center square) fabric.

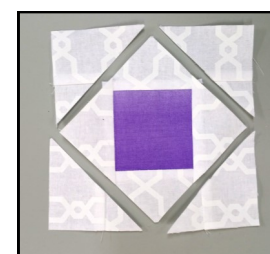
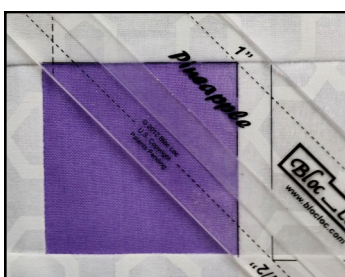
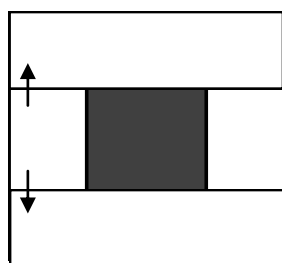
Sew (2) of the cream strips for your size pineapple ruler x wof and (1) center square strip size x wof (black) strip into a strip set as shown. Press seams to the cream (example) fabric.



Arrange the strip set widths onto your pineapple strip width x wof cream strip and stitch. Press seam toward the cream strip. Cut the sections apart. Press seam toward the cream strip.



Add another cream strip to the other side of Round 1. Cut the sections apart again and then press the seams toward the cream strip.



Round 1: Starts as a square in a square.

Place the right angle of the Pineapple ruler into the right angle of the square in a square unit. Trim the corner using the edge of the ruler. Trim remaining three corners.

Quilt Assembly Diagram

