

Articulating Boom

AB46JE AB46JRT



- 16m maximum working height
- Hour meter
- 2WD or 4WD rough terrain
- Battery charge indicator (electric only)
- 226kg platform capacity
- Oscillating front axle (4WD model only)
- Large 183cm x 99.1cm platform
- Duplicate boom controls at ground level
- Ultra-tight inside turning radius
- Multi-function, variable speed platform controls

- The Snorkel articulating boom lift machines feature an articulating riser boom for up and over capabilities, a telescoping main boom for horizontal or vertical reach, and an articulating jib boom for additional up, over, out and down reach.

Other Snorkel Work Platforms

Snorkel also manufactures a range of other work platforms including both small & large scissor lifts, trailer boom units, truck mounted boom units, and large telescoping boom machines. Many of these units are available with alternative power sources including 24V DC options.

A catalogue is available showing a wide range of these machines, contact your Sales & Marketing Manager listed on this brochure to obtain a copy.

Scissor Lifts



Truck Mounted Boom



Trailer Mounted Boom



Personal Lift



Self Propelled Boom



Clint Norgrove

Sales & Marketing Manager — North Island

Mobile: 021 774 722

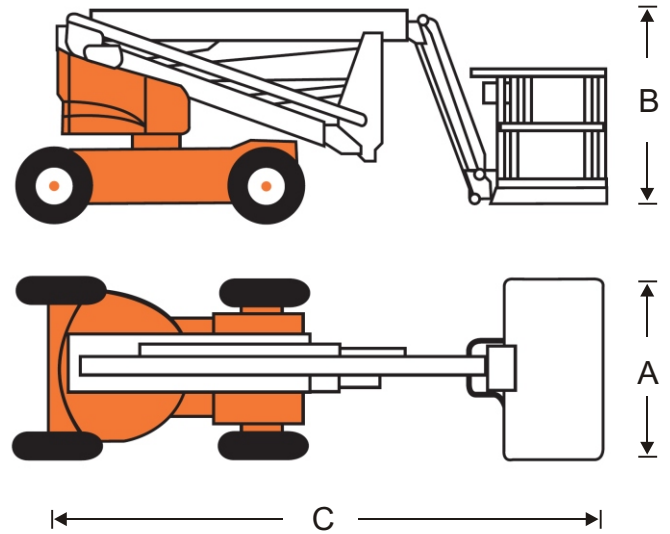
Email: clint@snorkel.co.nz

Phone / Fax: (06) 858 9543

AB46JE/46JRT *Articulating Boom*

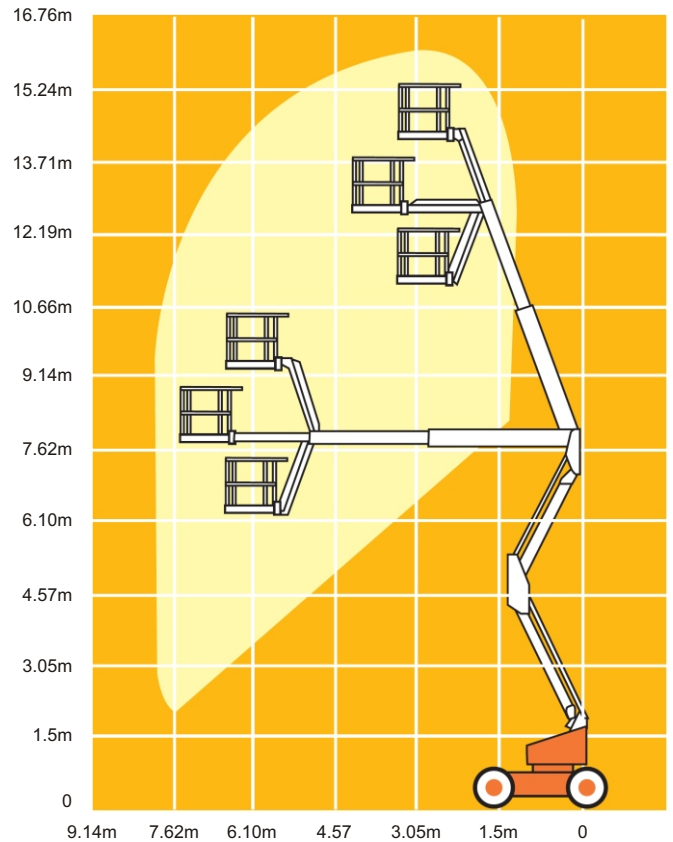
TECHNICAL DATA

	AB46JE 2WD	AB46JRT 4WD
Max working height	16.1m	16.2m
Max platform height	14.1m	14.2m
Max working outreach	7.5m	7.5m
Clearance height at max outreach	7.6m	7.7m
Jib length	1.5m	1.5m
Jib arc	140°	140°
Platform capacity (SWL)	226.8kg	226.8kg
Platform size - outside	1.0m x 1.8m	1.0m x 1.8m
Platform rotation	140°	140°
Turret rotation	360° non-continuous	360° non-continuous
Width A	1.8m	2.1m
Stowed height B	2.0m	2.1m
Stowed length C	5.5m	5.7m
Gross weight	6486.4kg	6649.7kg
Gradeability	19°/35%	24°/45%
Inside turning radius	0.6m	0.9m
Outside turning radius	3.0m	3.5m
Tailswing - stowed	0	0
Cycle time to full height	66 seconds	66 seconds
Ground clearance	0.2m	0.3m
Max drive speed - stowed	5.6km/h	7.4km/h
Max drive speed - elevated	0.8km/h	0.8km/h
Tyres	High grip polly filled	High grip polly filled
Power source	8.6V 350Ah batteries	Kubota V1505 diesel



OPTIONS

- Motion alarm
- Flashing amber beacon
- Diesel scrubber (Diesel models only)
- Special paint colours
- Air filled tires



Danger: Standard models described in this brochure are NON-INSULATED and do not provide electrocution protection from contact with or close proximity to energised conductors which is pointed out on the decals and placards attached to the machine.

Products in this brochure comply with relevant ANSI and Australian Standards. This literature is for illustrative purposes only. Consult Operating/Maintenance and Parts Manuals for proper procedures. Specifications may vary and are subject to change without notice.

Snorkel
NEW ZEALAND
www.snorkel.com.au