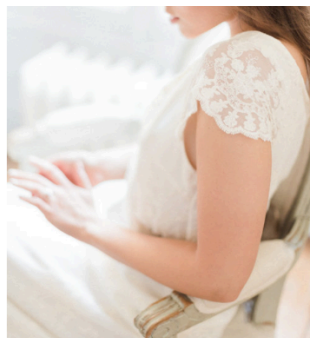


THIS MODERN LOVE

BESPOKE BRIDALWEAR - HANDMADE IN BRIGHTON



www.thismodernlovebridal.com

Measuring Guide for made to order dresses

Bust _____ inches

Please measure across the fullest part of the bust – it's a good idea to wear the same kind of bra as you will wear at the wedding.

Chest _____ inches

Measure below the bust around ribs.

Waist _____ inches

Measure at the smallest part of the waist/at the bottom of the ribs.

Upper hips _____ inches

Measure around your hips at the hip bones.

Lower hips _____ inches

Measure around the lower hips – this is the widest part around the top of the top of the thighs.

Shoulder to armpit _____ inches

Measure from the top of the shoulder, straight down the front of the body to underneath the armpit. This is usually between 7 and 10 inches.

Shoulder to waist _____ inches

Measure straight down from the top of the shoulder, over the bust, to where you would like the bodice to end. This measurement is to where you would like the elastic of the dress to sit. I recommend that the dress cinches in at the bottom of the ribs, at the smallest part of the waist. This measurement is usually between 13 and 17 inches but will be longer if you have a fuller bust.

Length _____ inches

Measure from the top of the shoulder, straight down your body to the desired length of the dress. If this is a full length dress, please ensure you are wearing the heel height you intend to wear with the dress.

Height _____ Clothes size _____ Any other information _____

If you need any guidance please email thismodernlovebridal@gmail.com