

# BOATING GUIDE

# 2013

## Information for:

Requirements

Rules

Boating Waters



**NEBRASKA**  
— GAME  PARKS —

[BoatSafeNebraska.org](http://BoatSafeNebraska.org)

## TABLE OF CONTENTS

Requirements	3
Safety	10
Rules	11
Other Information	13
Boating Waters	15

## GAME AND PARKS OFFICES

Headquarters/Southeast District, Lincoln	2200 N. 33rd St.	402-471-0641
Northwest District, Alliance	299 Husker Rd.	308-763-2940
Bassett Service Center	524 Panzer St.	402-684-2921
Boating Safety	2200 N. 33rd St.	402-471-5462
Kearney Service Center	1617 First Ave.	308-865-5310
Northeast District, Norfolk	2201 N. 13th St.	402-370-3374
Southwest District, North Platte	301 E. State Farm Rd.	308-535-8025
Omaha Metro Office	1212 Bob Gibson Blvd.	402-595-2144

### This is Only a Summary Guide

Boaters are responsible for knowing the regulations and statutes (state laws) before boating in Nebraska. Failure to do so is not an excuse. This publication is a summary guide to those regulations and statutes. To read or download them, visit the following links:

#### Regulations:

<http://outdoornebraska.ne.gov/admin/regulations/regulations.asp>

#### Statutes:

<http://www.nebraskalegislature.gov/laws>

*Cover Photo Courtesy of Take Me Fishing*



# BOATERS

## Protect Yourself from this Silent Killer

Carbon monoxide can  
collect within, alongside  
or behind a boat in  
minutes in a  
variety of ways.

# REQUIREMENTS

---

## DEFINITIONS

- **Motorboat** – Any vessel propelled by any form of mechanical power, gas, electric and diesel, including an electric trolling motor.
- **Personal Watercraft** – A class of inboard vessel less than 16 feet in length that uses an internal combustion engine powering a jet pump as its primary source of motive propulsion and is designed to be operated by a person sitting, standing or kneeling on the vessel rather than in the conventional manner of boat operation.
- **Sailboard** – A surfboard-type vessel with no freeboard and using a free-sail system with a swivel-mounted mast not secured to a hull by guys or stays.
- **Vessel** – Every description of watercraft, other than a seaplane on the water, used or capable of being used as a means of transportation on water.
- **Starboard** – The right side of a vessel.
- **Port** – The left side of a vessel.
- **Bow** – The front of a vessel.
- **Stern** – The rear of a vessel.
- **Leeward** – Downwind.
- **No Wake Speed** – Speed at which a vessel does not produce a wake, not to exceed 5 mph.

## WHO MAY OPERATE A MOTORBOAT

Anyone operating a motorboat or personal watercraft in Nebraska, born after Dec. 31, 1985, must be at least 14 years of age and they must have successfully completed the Nebraska boating safety course and are in possession of a valid certificate card. (See page 6)

## REGISTRATION

**Length of Registration** – Nebraska motorboat registrations are issued for three-year periods, expiring on Dec. 31 of the third year. No motorboat may be operated after Dec. 31 without the registration being renewed.

**Where to Get a New Registration** – Registrations may be obtained only from the county treasurer in the boater's county of residence.

**Where to Renew a Registration** – Registrations may be renewed at [OutdoorNebraska.org/boating](http://OutdoorNebraska.org/boating) or at county treasurer offices.

**Duplicate** – A duplicate certificate will be issued by the county treasurer on proof of loss for a \$5 replacement fee and \$4 issuing fee.

**Proof of Registration** – The registration certificate must be available for law enforcement inspection at any time.

**What Must Be Registered** – All vessels powered by any mechanical device (gas, electric and diesel) capable of propelling the vessel over any public or private waters of Nebraska (including the Missouri River and Lewis and Clark Lake) must be registered.

**Exceptions:**

- vessels not powered by machinery at any time
- motorboats registered in another state and housed in Nebraska less than 60 consecutive days
- vessels owned by any government or political subdivision
- racing type motorboats when competing in state approved races and during trial runs 48 hours before or 48 hours after competition
- vessels documented by U.S. Coast Guard

**Classifications and Fees** – The following fees are for the different classifications of vessels, including the length range in feet:

CLASS	LENGTH	*FEE
1	** shorter than 16 feet	\$23
2	at least 16 but less than 26 feet	\$46
3	at least 26 but less than 40 feet	\$67.50
4	40 feet and over	\$115
5	dealers/manufacturers for demonstration or testing	\$46

\* fee does not include \$4 issuing fee    \*\* registering canoes and kayaks is optional

**NOTE:** If an application for a motorboat not previously registered in Nebraska by the applicant is made after the start of a registration period, the license fee will be reduced by 1/36 for each full month of the registration period already expired, as of the date the boat was acquired.

**Change of Address** – Anyone with a valid boat registration who changes his address shall, within 15 days, notify Game and Parks of the new address.

**Transfer of Ownership** – The boat owner shall furnish Game and Parks notice of transfer of all or any part of his interest, within 15 days of the effective date. If the transfer of part ownership does not affect the owner’s right to operate the motorboat, the transaction will not affect the registration.

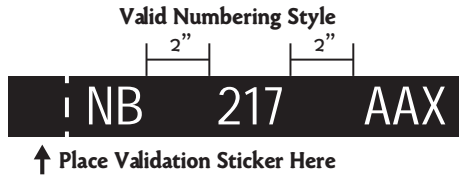
**Destruction or Abandonment** – The owner shall notify the Game and Parks of the destruction or abandonment of any vessel within 15 days, which will terminate the registration.

## NUMBERING

**Placement and Display** – The assigned numbers designated on the registration shall be placed on each side of the forward half of the vessel, reading left to right in one horizontal plane.



- Numbering shall start with the validation sticker, followed by the two capital block letters “NB,” then a 2-inch space, then three digits in a numerical group, then a 2-inch space, and finally two or three capital block letters.
- Letters and numbers will be block figures at least 3 inches in height, of contrasting color and visible for 100 feet.
- Purchase of the letters and numbers, except the validation sticker and the attachment to the motorboat, are the responsibility of the owner.
- No numbers and letters other than the registration numbers, letters and validation stickers shall be displayed on any mechanically powered boat on either side of the forward half of the vessel.



**Purchasers of Previously Owned Boats** – All registrations are nontransferable. Even if the motorboat you recently purchased is displaying a current validation sticker, you must register this motorboat in your name within 30 days of operation on the waters of this state.

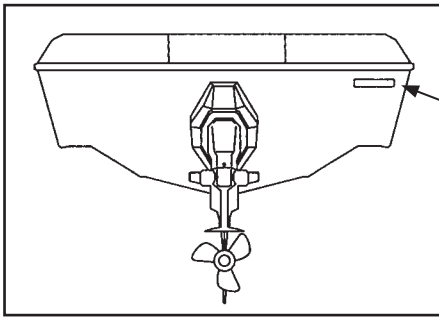
**Dealer Numbers** – A person engaged in the manufacture or sale of boats can obtain registrations for use in testing or demonstrating motorboats by payment of \$46, plus a \$4 issuing fee for each registration needed. Dealer numbers will be affixed temporarily in the prescribed position on the boat.

## TITLE

**Who Must Obtain a Title** – All first time owners of newly acquired motorized vessels must obtain a title from the county treasurer in the county where the owner resides before the county treasurer will issue or renew a registration. A boat must be titled before it may be sold. All boats made before 1972 are exempt from titling, but not from registration.

**Hull Identification Number** – Federal law requires all boats manufactured after Nov. 1, 1972, including homemade boats, display a 12 character Hull Identification Number (HIN).

- The character of each HIN must be at least a quarter inch high and located to the starboard outboard side of the transom within 2 inches of the top of the transom, gunwale or hull/deck joint, whichever is lowest.
- If a motorboat has no HIN and is newer than a 1972, a new one will need to be obtained from the Nebraska Department of Motor Vehicles (DMV) before a title and registration can be issued. Applications for HIN are available from the DMV or county treasurer.
- Any person who operates a motorboat that requires a certificate of title without having that title shall be guilty of a Class III misdemeanor.
- Any person who operates a motorboat that requires a HIN without that number shall be guilty of a Class III misdemeanor.



**Common HIN:**  
stamped into fiberglass of transom

**ABC45678A494**

## **BOATER EDUCATION**

**Requirement** – Boater education is open to anyone at least 14 years of age, but anyone born after Dec. 31, 1985, who operates a motorboat or personal watercraft in Nebraska must have successfully completed the Nebraska boating safety course.

- Options – Boaters have two options to fulfill the boater education requirement:
- Attend a six-hour Nebraska boating safety course with a proctored exam.
- Request class materials for home study, then attend a three-hour Nebraska boating safety course review with a proctored exam. Study materials may be downloaded from [BoatSafeNebraska.org](http://BoatSafeNebraska.org).

**Exam** – Seventy-five percent of the answers must be correct to pass the proctored exam.

**Where to Find Classes** – Visit [BoatSafeNebraska.org](http://BoatSafeNebraska.org) to view a schedule.

## EQUIPMENT

**Fire Extinguisher** – Any outboard, inboard/outboard or inboard motorboat that has a closed compartment, closed living spaces or permanently installed fuel tanks must have a fire extinguisher according to the following guidelines:

- Classes 1 and 2 – one U.S. Coast Guard-approved type B-I fire extinguisher
- Class 3 – two U.S. Coast Guard-approved B-I or one B-II fire extinguisher
- Class 4 – three U.S. Coast Guard-approved B-I or one B-I and one B-II fire extinguishers
- All airboats must carry the number of fire extinguishers according to their classification. (See page 4 for classification of vessels.)

**NOTE:** Fire extinguishers are not required for outboard motorboats less than 26 feet in length of open construction that do not carry passengers for hire.

**Oars** – Every vessel, except personal watercraft, sailboards or similar devices and classes 3 or 4 motorboats, shall carry an oar or paddle.

**Bailing Bucket** – Every vessel, except personal watercraft, sailboards or similar devices, shall be equipped with a bailing bucket, efficient bilge pump or sponge.

**Muffler** – Exhaust of all internal combustion engines used on motorboats shall be effectively muffled in a reasonable manner. It shall be unlawful to operate any motorboat in such a manner as to exceed a noise level of 96 decibels when measured at 100 feet when the motorboat is on plane.

**Whistle or Bell** – Every vessel of classes 1, 2, 3, and 4 shall have an efficient whistle or other mechanical sound producing device. Every mechanically powered boat of Class 4 shall be equipped with an efficient bell.

**Flame Arrestor** – Every motorboat, with an inboard motor using gasoline, shall have the carburetor equipped with an efficient flame arrestor or similar device. These devices shall meet U.S. Coast Guard approval.

**Ventilation** – Every motorboat, except those of open construction, using volatile liquid fuel shall have a prescribed venting system for bilges and the fuel tank compartment.

## LIGHTING

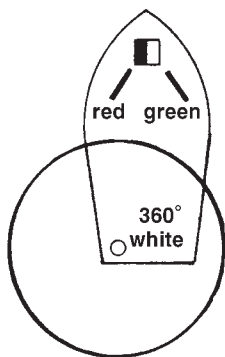
All vessels in use from sunset to sunrise, shall display lights as specified. No other lights may be used, except a spotlight for difficult navigation.

- Every white light prescribed shall be visible at a distance of at least 2 miles.
- Every colored light prescribed shall be visible at a distance of at least 1 mile, showing green to starboard and red to port and screened to show from dead ahead to 22.5 degrees rearward on the respective side.
- All mechanically powered sailboats shall display the lights required for that class of mechanically powered boat.

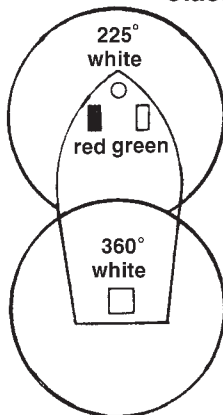
- All motorboats and sailboats shall carry a lantern or flashlight for emergencies.
- All anchored vessels shall display the 360 degree white light, except while anchored in a docking or anchorage area.

## MOTOR BOATS

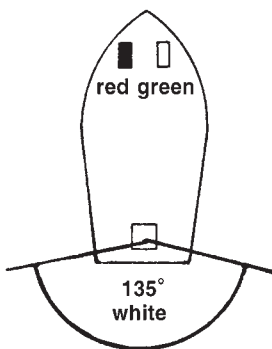
Class 1 & 2



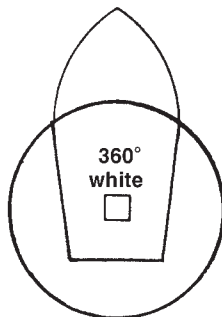
Class 3 & 4



SAILBOATS



NON-POWERED CRAFT  
Rowboats & Canoes



Any program that receives federal funding from the Sport Fish Restoration and Boating Trust Fund administered by the U.S. Coast Guard prohibits unlawful discrimination on the basis of race, color, religion, age, gender, marital status, national origin, age, disability or political affiliation. Any person who believes he or she has been discriminated against in any program, activity, facility, or service, should contact the Nebraska Game and Parks Commission, Lincoln, NE 402-471-0641, the Equal Opportunity Commission, Lincoln, NE 402-471-2024, TTY/TDD 402-471-4693; United States Fish Wildlife Service, Civil Rights Coordinator, 4401 N. Fairfax Drive, Arlington, VA 22203; Director, Equal Opportunity Program, U.S. Department of Interior, National Park Service, 1849 C Street NW, Mail Code 0008, Washington, D.C. 20240-0001.



## FLOTATION DEVICES

Every vessel of any description, except sailboards, must carry one U.S. Coast Guard approved Type I, II, III or V flotation device of suitable size for each person on board. Every vessel, except sailboards, personal watercraft, canoes, and kayaks, in addition to the required wearable life preservers also shall carry one U.S. Coast Guard-approved Type IV throwable device.

### Types of Devices:



**Type I – Offshore Life Jacket** – This is designed to turn a person who is unconscious in the water to a vertical or slightly backward position.



**Type II – Near Shore Buoyant Vest** – This is designed to turn a person who is unconscious in the water to a vertical or slightly backward position.



**Type III – Flotation Aid** — This is designed to keep a person who is conscious in the water in a vertical or slightly backward position. It has less turning ability than Type II and is designed for water activities, such as skiing.



**Type IV – Throwable Device** — This is designed to be thrown to a person in the water.



**Type V – Special Use Device** – This is designed only for specific activities. Check label for limits of use. Varieties include board sailing vests, deck suits, work vests, hybrid personal flotation devices, and others.

# SAFETY



## DIVER'S FLAG

The diver's flag must be displayed in Nebraska whenever diving or underwater-powered spear fishing to give fair warning to boaters of a diver in the area.

### Also:

Scuba divers are reminded to display the diver's flag and stay within 150 feet of their flag.

Divers may not dive within 200 feet of the outer limits of any designated swimming area, boat mooring, docking, or launching area.

Boaters must maintain a distance of 150 feet from a diver's flag, except law enforcement boats, rescue boats and boats engaged in the diving operations.



## ORANGE FLAG

Whenever a water skier/tuber, surfer or any person engaged in a similar activity or associated equipment, is down in the water the operator or observer of the tow boat must display a hunter orange flag of a size not less than 12 inches square or at least 144 square inches. This flag must be visible 360 degrees.

## REPORTING ACCIDENTS

- It shall be the duty of the operator of a vessel involved in a collision, accident or other casualty to give his name, address and the identification of his vessel in writing to any person injured and to the owner of any property damaged.
- The operator of every vessel involved in a boating accident is required to file a written report whenever a boating accident results in loss of life, disappearance of a person, loss of consciousness, medical treatment, disability for more than 24 hours, or property damage in excess of \$500. Reports in death, disappearance and injury cases must be made within 48 hours; reports of other cases are required within five days. Written reports shall be submitted to the Game and Parks. Report forms may be downloaded at [BoatSafeNebraska.org](http://BoatSafeNebraska.org).
- The owner of a vessel shall be liable for any injury or damage caused by the negligent operation of any powered vessel. The owner shall not be liable if the vessel is being used without the consent of the owner unless the operator is a member of his immediate family.

## UNSAFE VESSELS

- No overloaded vessels shall be operated on Nebraska waters. All vessels when loaded must retain at least one half of the total depth of the boat above the water when measured at the center of the vessel and must meet the requirement of the manufacturer's capacity plate.
- If any conservation officer or other law enforcement official of Nebraska sees a vessel being operated without the proper equipment or with any other unsafe condition, he or she may direct the operator to correct the situation immediately or return to mooring until the hazard is corrected.

## RULES

---

### UNIFORM STATE WATERWAY MARKERS



Orange and white diamond shape with cross means  
“**Boats Keep Out.**”



Orange and white diamond shape warns of “**Danger.**”



Orange and white circle marks “**Controlled Area**” as indicated within circle.



Orange and white square or rectangle gives “**Information, Names, Distances and Permitted Activities.**”

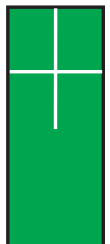
### CHANNEL BUOYS/LATERAL SYSTEM (FOUND ON THE MISSOURI RIVER)

Always pass between a green buoy and its companion red buoy.



**When Headed Upstream** – Keep red buoys to your right and green buoys to your left.

**When Headed Downstream** – Keep green buoys to your right and red buoys to your left.



## **RIGHT OF WAY**

**Audible Signals** – When two vessels are approaching each other head on or nearly so, each operator shall swing the bow of his motorboat to the starboard to pass. Each operator shall give one short blast of the whistle and indicate his course by swinging the bow of his motorboat substantially to starboard. Unnecessary sounding of whistles, horns, bells, or other sound producing devices is prohibited.

Maneuvering and Warning Signals:

- Overtaking on the starboard side – 1 short\* blast
- Overtaking on the port side – 2 short blasts
- Backing up – 3 short blasts
- Danger – 5 or more short blasts

\* A short blast is approximately one second.

## **NAVIGATION RULES**

Vessel traffic shall be governed by the following rules:

- When passing from rear — pass to other vessel's port.
- When passing head on — pass port to port.
- When passing at right angles — vessel at right has right of way.
- Manually propelled vessels have the right of way over all other vessels.
- Sailboats have the right of way over all motor driven vessels.
- Motorboats, when meeting or overtaking sailboats, shall always pass on the leeward side.
- Any vessel backing from a landing has the right of way over incoming vessels.

## **UNLAWFUL PRACTICES**

It is unlawful to:

- operate or give permission for the operation of a vessel that is not equipped as required.
- exceed the speeds posted or charted in any specific zone or area. Speed always must be reasonable and proper in consideration of the conditions prevailing at that time and place.
- travel at speeds exceeding 5 mph/no excessive wake limit in or within 30 yards of any vessel, harbor, marina, landing pier, fishing pier, anchorage, or bathing beach.
- operate a personal watercraft between sunset and sunrise.
- operate any vessel within any area marked off or set aside as prohibited.

- swim or bathe in any marinas or within 20 yards of launching, mooring or docking areas.
- tie off any vessel or attach one to any buoy, marker or navigational aid on any waters in this state.
- place or leave, in any public waters, any vessel not safe for operation.
- allow any child under 13 years of age aboard any vessel when not wearing a U.S. Coast Guard approved life preserver, of suitable size, except when hunting waterfowl in an anchored boat. The operator shall be held responsible for compliance.
- operate a personal watercraft without wearing a lanyard type engine cutoff switch.
- operate or be a passenger on a personal watercraft without wearing a Coast Guard approved life jacket, regardless of age.
- jump a wake with a motorized vessel within 50 yards of another craft.
- jump the wake of any boat that is towing a skier, tuber, wakeboarder, etc.
- for any boat operator, including personal watercraft, under 16 years of age to tow a skier, tuber, wakeboarder, etc.

## **BOATING UNDER THE INFLUENCE**

It is unlawful to operate a motorboat with a blood alcohol content of .08 percent or greater. Doing so constitutes Boating Under the Influence (BUI), which carries a penalty of up to \$1,000 fine, up to six months in jail and the loss of boating privileges for six months. Refusal to submit to a chemical blood alcohol test will result in the same penalties as BUI.

## **OTHER INFORMATION**

---

### **RENTALS**

Owners of motorboats for rent shall keep a record of the name and address of persons renting vessels designated or permitted by him to be propelled by any mechanical device. The record, including boat identification number, departure date and time and expected time of return, shall be preserved for at least six months. Rental motorboats shall include all equipment prescribed by law for that class of boat. It shall be unlawful for any motorboat livery to lease to anyone under the age of 18 years.

### **SANITATION**

Every vessel with an installed toilet must have an operable U.S. Coast Guard certified marine sanitation device (MSD) Type I, II or III.

Also:

- If equipped with a “Y” valve, the valve must be secured by a padlock, nonreleasable wire tie or removal of the handle, so the valve can’t be used either accidentally or intentionally without the owner/operator’s knowledge.
- No wastes or container of such wastes shall be placed, left or discharged into or near any waters of this state.

## **WATER SKIING**

**Observer** – All vessels, when pulling a person on skis, surfboards or similar devices and not equipped with a wide-angle rear view mirror, must have a responsible person age 12 or older as an observer in the vessel with the operator.

**Lifesaving Devices** – It is unlawful for any boat operator to tow or assist any person on skis, surfboards or similar devices or for any skier to manipulate water skis or similar devices unless the skier is wearing a life jacket that is in good condition and U.S. Coast Guard approved. The exception is during state-authorized regattas and similar ski and water shows. All lines, when not in use, must be stowed aboard the towing vessel.

**Skiing Hours** – It is unlawful to tow or assist a person on water skis, aquaplane or similar device from the period of one-half hour after sunset to one-half hour before sunrise unless in duly authorized competition.

## **REGATTAS AND RACES**

- Game and Parks authorization must be obtained for all regattas, motorboat or other boat races, marine parades, tournaments or exhibitions on any waters of this state. Also:
- The person in charge of such event shall obtain permission by filing an application with Game and Parks at least 30 days before the event. The application should indicate the date, time and location of the event.
- For events to be held on navigable waters, it is necessary to give at least 30 days notice as permission must be cleared with the U.S. Coast Guard.
- Motorboats competing in special events may use cutouts during a period not to exceed 48 hours immediately preceding such regatta or race and a period not to exceed 48 hours immediately following such event.
- Motorboats do not have to carry bells, whistles or fire extinguishers while racing.
- Forms may be downloaded from [BoatSafeNebraska.org](http://BoatSafeNebraska.org).

# BOATING WATERS

## Key to Abbreviations

- WMA – wildlife management area
- SP – state park
- SRA – state recreation area
- NWR – national wildlife refuge
- WPA – waterfowl production area
- USFWS – U.S. Fish and Wildlife Service

All waters in Nebraska are open waters. The following are lists of waters with special restrictions.

**It shall be unlawful to operate a vessel with speed in excess of 5 mph and speed of all vessels must be reduced so that wash and wake will cause no discomfort, hazard, injury or damage to persons, vessels, or property on the following waters except as posted and the use by Nebraska Game and Parks Commission employees and their designees engaged in Game and Parks authorized activities:**

### (Counties in parenthesis)

- Arnold Lake (Custer)
- Avocet Lake WMA (Grant)
- Bassway Strip WMA (Buffalo)
- Bear Pierce Cedar 2A (Gage)
- Birdwood WMA (Lincoln)
- Blue Hole West WMA (Buffalo)
- Blue Lake (Garden)
- Brady WMA (Lincoln)
- Bruning Dam (Fillmore)
- Buckley 3F (Jefferson)
- Buckskin Hills WMA (Dixon)
- Bufflehead WMA (Buffalo)
- Burchard Lake WMA (Pawnee)
- California Bend (Washington)
- Carter Lake – east leg (Douglas)
- Century Link Lake (Cass)
- Chalkrock Lake WMA (Cedar)
- Cheyenne SRA (Hall)
- Clatonia 3A (Gage)
- Clear Lake (Brown)
- Coot Shallows WMA (Buffalo)
- Cottonmill Lake (Buffalo)
- Cottontail Lake (Lancaster)
- Cottonwood-Steverson Lake WMA (Cherry)
- Crescent Lake WMA (Garden)
- Cozad WMA (Dawson)
- Cub Creek 9B (Leisure Lake) (Jefferson)
- Cub Creek 12A (Jefferson)
- Czechland Lake (Saunders)
- DeFair Lake WMA (Grant)
- DeSoto Bend NWR Lake (Washington)
- Dogwood WMA (Dawson)
- East Gothenburg WMA (Dawson)
- East Hershey WMA (Lincoln)
- East Sutherland WMA (Lincoln)
- Elwood Reservoir WMA (Gosper)
- Fremont Slough WMA (Lincoln)
- Fremont SRA, Lake No. 16 (Dodge)
- Fremont SRA, Lake No. 20, west bay (Dodge)
- Frye Lake WMA (Grant)
- Gallagher Canyon Reservoir (Dawson)
- Gavins Point Dam tailwaters (Cedar)
- Glenn Cunningham Lake (Douglas)
- Goose Lake WMA (Holt)
- Grand Island Eagle Scout Lake (Hall)
- Grand Island L.E. Ray Lake (Hall)
- Grove Lake WMA (Antelope)
- Hamburg Bend (Otoe)
- Hayes Center WMA (Hayes)
- Hedgefield Lake WMA (Lancaster)
- Hershey WMA (Lincoln)
- Holdrege North Park Lake (Phelps)
- Homestead Lake (Butler)
- Home Valley Lake WMA (Cherry)
- Hull Lake WMA (Boyd)
- Iron Horse Trail Lake (Pawnee)
- Kearney WMA (Kea Lake) (Buffalo)

- Kea West WMA (Buffalo)
- Lake Babcock (Platte)
- Lake Ericson (Wheeler)
- Lake Helen (Dawson)
- Lake Ogallala SRA (Keith)
- Lake Wanahoo SRA (Saunders)
- Lawrence Youngman Lake (Douglas)
- Liberty Cove Reservoir (Webster)
- Lone Star Recreation Area (Fillmore)
- Long Lake (Brown)
- Maple Creek Reservoir (Colfax)
- Maskenthine Lake (Stanton)
- Meadowlark Lake (Seward)
- Memphis Lake SRA (Saunders)
- Merganser Lake (Lancaster)
- Mormon Island SRA Middle Lake (Hall)
- Mormon Island SRA West Lake (Hall)
- North Platte I-80 Lake (Iron Horse Lake)  
(Lincoln)
- Olive Creek Lake SRA (Lancaster)
- Overland Trails Lake (York)
- Oxbow Trails Lake (Butler)
- Pawnee Slough WMA (Lincoln)
- Pibel Lake (Wheeler)
- Pigeon/Jones Creek Reservoir (Dakota)
- Pioneers Trail Recreation Area  
(Hamilton)
- Powder Creek Reservoir (Dixon)
- Prairie Lake (Adams)
- Prairie View Lake (Douglas)
- Rat and Beaver Lake WMA (Cherry)
- Recharge Lake (York)
- Red Cedar Lake (Saunders)
- Red Fox WMA (Stanton)
- Rock Creek Lake SRA (Dundy)
- Roseland Lake (Adams)
- Sandy Channel SRA (Buffalo, Phelps)
- Sanitary and Improvement District  
No. 177 (Riverside Lakes, east lake)  
(Douglas)
- Shell Lake (Cherry)
- Smith Creek Lake (Seward)
- Smith Lake WMA (Sheridan)
- South Pine WMA (Brown)
- Stagecoach Lake SRA (Lancaster)
- Standing Bear Lake (Douglas)
- Summit Lake SRA (Burt)
- Swan Lake (Holt)
- Swan Creek Lake 2A WMA (Saline)
- Swan Creek Lake 67 (Saline)
- Tanglewood Lake (Lancaster)
- Timber Point Lake (Butler)
- Tobacco Island WMA (Cass)
- Twin Lakes WMA (Rock)
- Twin Lakes WMA (Seward)
- Union Pacific SRA (Buffalo)
- Wagon Train Lake SRA (Lancaster)
- Walgren Lake SRA (Sheridan)
- Walnut Creek Lake 2A (Saline)
- Walnut Creek Reservoir (Papio 21)  
(Sarpy)
- War Axe SRA (Buffalo)
- Wehrspann Lake (Sarpy)
- West Cozad WMA (Dawson)
- West Gothenburg WMA (Lincoln)
- West Papillion No. 5 (Sarpy)
- West Wood River WMA (Hall)
- Wild Plum Lake (Lancaster)
- Wildwood Lake WMA (Lancaster)
- Willard L. Meyer Recreation Area  
(Saline)
- Willow Island WMA (Dawson)
- Willow Lake B.C. WMA (Brown)
- Wilson Creek 4F Lake (Prairie Owl)  
(Otoe)
- Wirth Brothers Lake (Johnson)
- Wolf Wildcat Lake No. 12 (Gage)
- Yankee Hill WMA (Lancaster)
- Zorinsky Lake (Douglas)
- All USFWS-managed WPAs



**The following waters are open to nonpowered vessels and those powered with conventional outboard electric motors. It shall be unlawful to use internal combustion type motors except as posted and the use by Nebraska Game and Parks Commission employees and their designees engaged in Game and Parks authorized activities:**

**(Counties in parenthesis)**

- Alexandria SRA (Jefferson)
- Ansley City Lake (Custer)
- Arrowhead Lake WMA (Gage)
- Atkinson Lake (Holt)
- Bowman Lake (Sherman)
- Bowling Lake (Lancaster)
- Bowwood WMA (Pawnee)
- Bridgeport SRA (four smaller lakes only) (Morrill)
- Carter P. Johnson Lake, Fort Robinson SP (Sioux)
- Champion Mill Lake (Chase)
- Cornhusker WMA (Hall)
- Cottonwood Lake (Lake Yankton) (Knox)
- Crystal Lake (Adams)
- Crystal Lake WMA (Lincoln)
- Cub Creek Lake (Keya Paha)
- Darr WMA (Dawson)
- Dead Timber SRA (Dodge)
- Donald Whitney WMA (Gage)
- East Odessa WMA (Buffalo)
- Farwell South Reservoir (Howard)
- Fort Kearny SRA (Kearney)
- Fremont SRA lake Nos. 1, 2, 3, 3a, 4, 5, 6, 7, 8, 9, 11, 12, 13, 14, 17 and 19 (Dodge)
- Frenchman WMA (Hayes)
- Gracie Creek Trout Pond (Garfield)
- Holmes Lake (Hall) (Lancaster)
- Indian Creek WMA (Webster)
- Island Lake NWR (Garden)
- Killdeer WMA (Lancaster)
- Kissinger WMA (Clay)
- Louisville SRA (Cass)
- Mayberry WMA (Pawnee)
- North Loup SRA (Howard)
- Pintail WMA (Hamilton)
- Osage WMA (Johnson)
- Oxford City Lake (Furnas)
- Papio D-4 (Douglas)
- Pawnee Prairie WMA (Pawnee)
- Prairie Knoll WMA (Pawnee)
- Pressey WMA (Custer)
- Ravenna Lake (Buffalo)
- Redtail WMA (Butler)
- Sacramento-Wilcox WMA (Phelps)
- Silver Creek City Lake (Merrick)
- Skyview Lake (Madison)
- Teal WMA (Lancaster)
- Twin Oaks WMA (Johnson)
- Two Rivers SRA Lake Nos. 1, 2, 3, 4, 6 and 7 (Douglas)
- Valentine NWR Lakes (Cherry)
- Verdon Lake SRA (Richardson)
- Victoria Springs SRA (Custer)
- Wellfleet Lake (Lincoln)
- West Brady WMA (Lincoln)
- West Hershey WMA (Lincoln)
- West Maxwell WMA (Lincoln)
- Windmill SRA (Buffalo)
- Wilson Creek 2X WMA (Otoe)
- Yanney Park Lake (Buffalo)

**It shall be unlawful to operate any motorboat on the following waters except as posted and the use by Nebraska Game and Parks Commission employees and their designees engaged in Game and Parks authorized activities:**

**(Counties in parenthesis)**

- Archway Lakes (Buffalo)
- Bader Memorial Lakes (Merrick)
- Bethphage Pond (Kearney)
- Central City Lake (Merrick)
- Chadron SP Pond (Dawes)
- Keller Park SRA (Brown)
- Niobrara SP (Knox)

**It shall be unlawful to operate any vessel on the following waters as they are closed to all vessels except as posted and the use by Nebraska Game and Parks Commission employees and their designees engaged in Game and Parks authorized activities:**

**(Counties in parenthesis)**

- Baright Lake, Eugene T. Mahoney SP (Cass)
- Barnett Park Ponds (Red Willow)
- Boyer Chute Wildlife Habitat Restoration Area (Washington)
- Calamus Reservoir, Bureau of Reclamation water control channels (Garfield)
- Chester Island WMA (Lincoln)
- Curtis Golf Course Pond (Frontier)
- Dawson County Museum Pond (Dawson)
- Grand Island Pier Lake (Hall)
- Grand Island Such's Lake (Hall)
- Heartland Shooting Park Pond (Hall)
- Heartwell Park Pond (Adams)
- Humphrey Pond (Keith)
- Jenny Newman Lake (Cass)
- I-80 Department of Roads Lakes – Grand Island Rest Area, Mormon Island East, Alda, Kearney North Rest Stop, Brady Rest Stop, Maxwell Rest Area, and Kearney South Rest Stop
- Oak Lake (Lancaster)
- Plum Creek Park Pond, (Lexington City Pond) (Dawson)
- Sutton Clark Pond (Clay)
- Smith Lake Crescent Lake USFWS-NWR (Garden)
- Two Rivers SRA Lake No. 5 (Douglas)
- All state fish hatchery areas unless otherwise authorized by the Nebraska Game and Parks Commission.



**Enjoy Boating the Safe Way**

Take a Safe Boating Course from  
the U.S. Coast Guard Auxiliary  
or the U.S. Power Squadron.



Call 402-451-7083 or 402-689-5715  
or visit [cgaux.org](http://cgaux.org) or [usps.org](http://usps.org) for more information.

**It shall be unlawful to operate any vessel faster than 5 mph/no wake from sundown to sunrise on the following waters except as posted and the use by Nebraska Game and Parks Commission employees and their designees engaged in Game and Parks authorized activities:**

**(Counties in parenthesis)**

- Branched Oak Lake SRA (Lancaster)

**It is unlawful to operate a motorboat Oct. 15 through Jan. 15 of each year on the following state wildlife refuges:**

- Garden County Refuge, North Platte River
- Lincoln County Refuge, North Platte River
- Dodge-Saunders County Refuge, Platte River
- Boyd-Holt County Refuge, Niobrara River
- Lake Babcock, Platte County, closed to all vessels during the open waterfowl season

**The following is a list of waters governed by nonpublic lake associations. All state boating laws apply. For additional information, contact the local nonpublic lake associations for special rules and regulations that apply.**

**(Counties in parenthesis)**

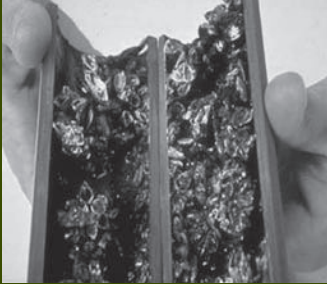
- Beaver Lake (Cass)
- Bucktail Lake (Merrick)
- Capitol Beach Lake (Lancaster)
- Ginger Woods (Douglas)
- Hanson's Lake No. 2 (Sarpy)
- Hanson's Lake No. 3 (Sarpy)
- Hawaiian Village (Sarpy)
- Heron Point Lake (Merrick)
- Lake Oconee Estates (Platte)
- Lake Socorro (Colfax)
- Legge's Lake (Dodge)
- Leisure Lake (Dodge)
- Middle Island Lake (Cass)
- Morningstar Lake (Merrick)
- North Lake (Cass)
- Pine Lake (Lancaster)
- Sack's Lake (York)
- Summer Haven (Dodge)
- Sundance Lake (Merrick)
- Ventura Lake (Dodge)
- Villa Springs (Sarpy)
- Waconda Lake (Cass)
- Wagner Lake (Platte)
- Whitetail Lake (Platte)
- Willers Cove (Stanton)
- Willow Bend (Hamilton)
- Wolf Lake (Saunders)
- Woodcliff Lakes (Saunders)

**It shall be unlawful to operate air boats on all Fish and Wildlife Service managed Waterfowl Production Areas (WPA) except as posted and the use by Nebraska Game and Parks Commission employees and their designees engaged in Game and Parks authorized activities.**



# STOP AQUATIC HITCHHIKERS!™

Prevent the transport of nuisance species.  
Clean all recreational equipment.  
[www.ProtectYourWaters.net](http://www.ProtectYourWaters.net)



If You See A Zebra Mussel  
Please Call  
**1-877-STOP-ANS**  
**1-877-786-7267**



For more information visit Nebraska Invasive Species Project  
<http://snr.unl.edu/invasives>  
**Clean.Drain.Dry.**