

SAMi Installation Instructions



Unpack the camera. Leave the clear plastic protective film on until after the camera is installed as it is easy to scratch the lens.

For the initial setup you need to connect the SAMi camera to your network with an Ethernet wire. You can use the one supplied with the camera or use your own.





Connect the camera to your WiFi gateway, router, or access point. This needs to be the WiFi device that your iPhone (or iPod/iPad) is connecting to. You can connect directly to your WiFi router, or you can connect to any Ethernet switch that is connected to the WiFi router. This does not need to be near where the camera will be installed and is only necessary for setup.

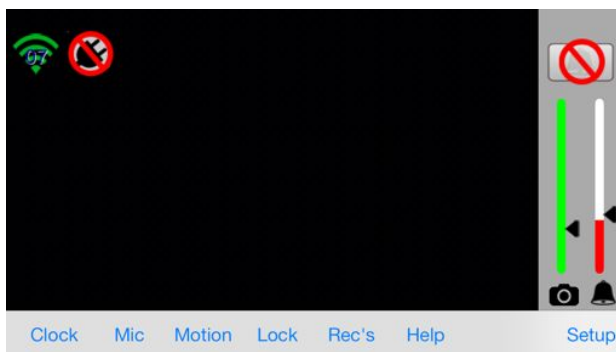


Connect the power plug from the supplied wall power adaptor into the jack on the back of the camera, and then plug the adaptor into an AC outlet.



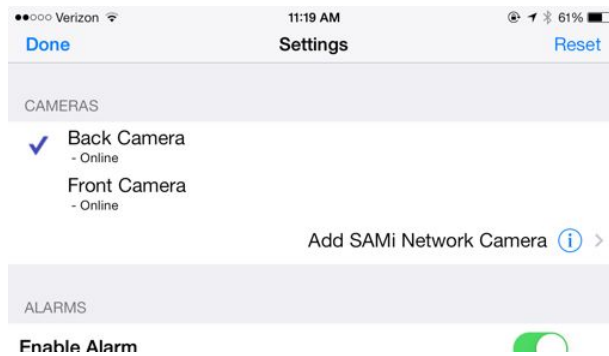
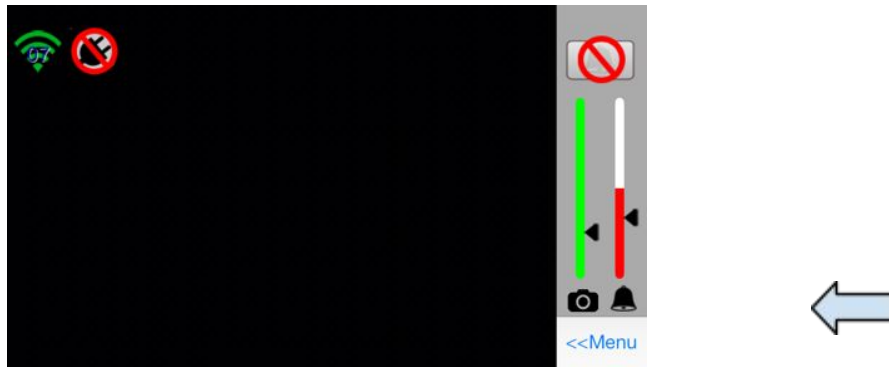
Install and start the SAMi app on your iPhone/iPod/iPad. You can get the app by searching for “HiPass Design Ltd” in the App Store or entering the following address into the browser on your phone:

<http://appstore.com/samisleepactivitymonitor>



When the app is initially run it is configured to use the internal camera. Press Setup to add your SAMi network camera.

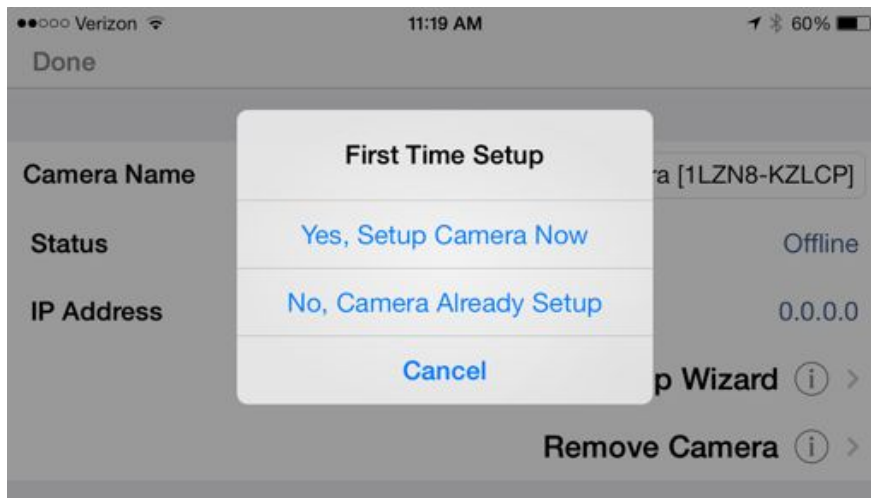
If the menu bar is hidden, press <<Menu to make it appear.



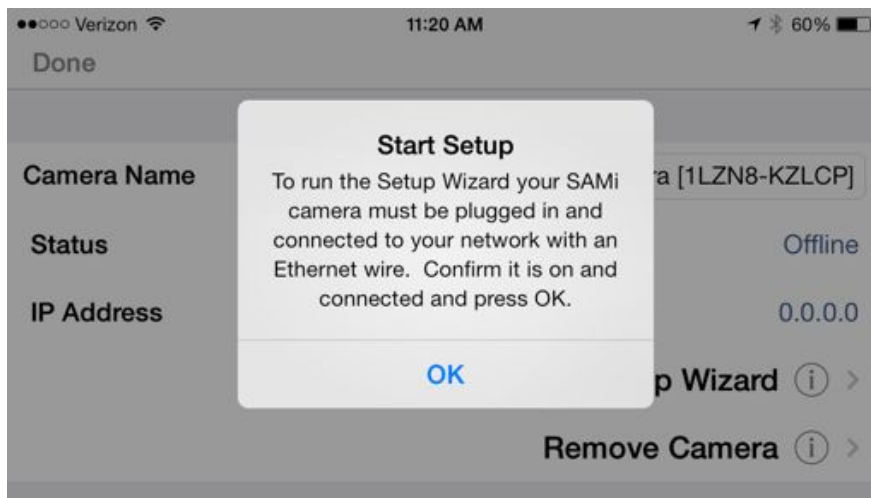
Select “Add SAMi Network Camera” (press on the blue “i” to the right).



This will turn on the iPhone’s camera. On the front of the SAMi camera is a “QR code” that is specific to your camera. The SAMi app uses this code to link your iPhone to the SAMi camera. Hold your iPhone up to the SAMi camera so that the code is centered in the brackets as above. When the code is read, the iPhone will beep and switch to the setup screen. If you have difficulty, slowly move the camera in and out. You can shake the iPhone to force it to re-focus. Make sure there is plenty of light on the QR Code.



Select "Yes, Setup camera Now" to start setup.



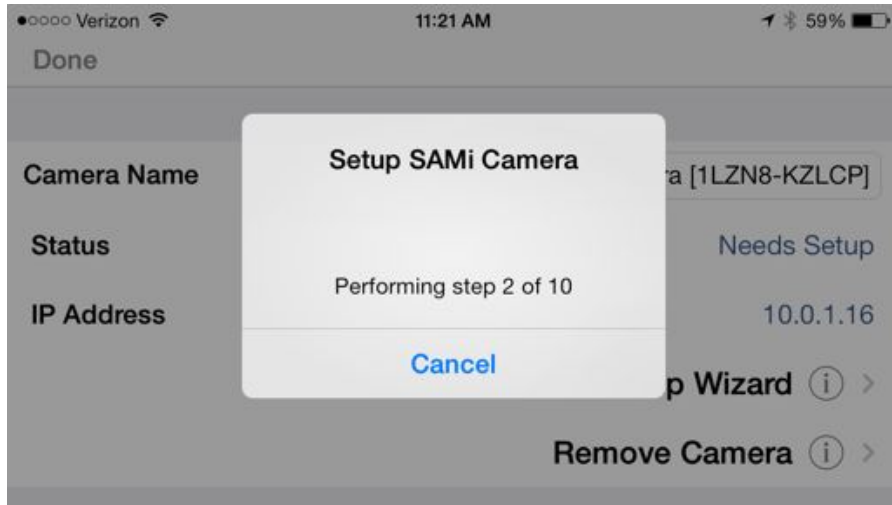
If the SAMi camera is not on and connected to your network, connect it now.



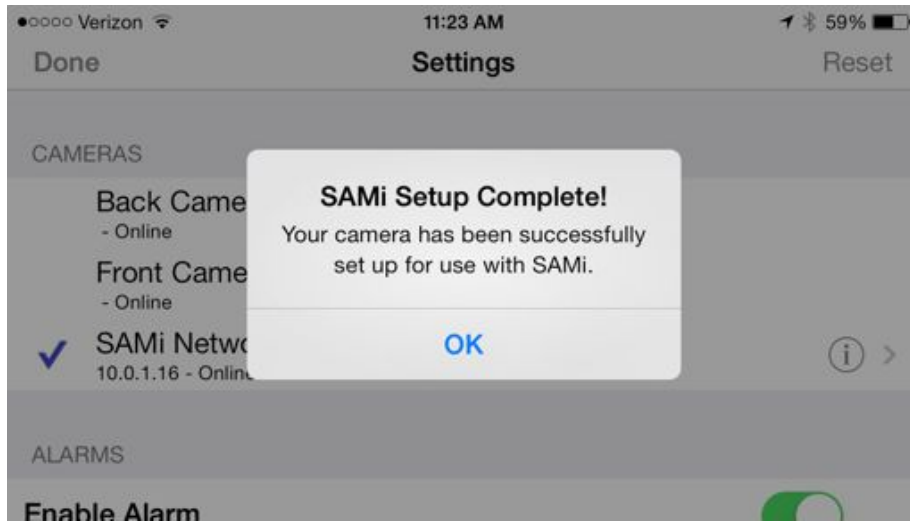
If you are are planning on using SAMi with WiFi (typical, easier installation), choose “Setup for WiFi”. If you are going to use SAMi with an Ethernet wire connected to your network (slightly higher performance and reliability) select “Setup for Wired”.



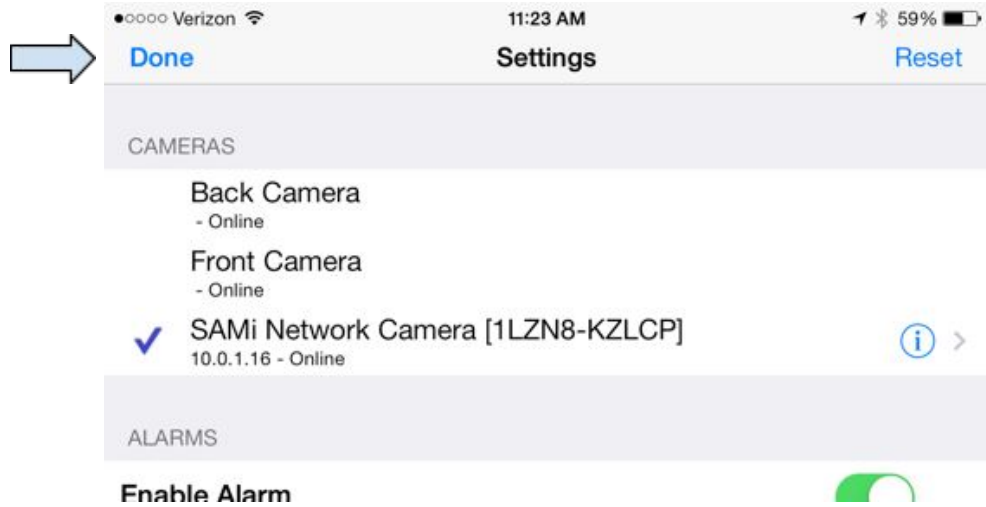
If you are setting up for WiFi you will be prompted for your WiFi network password. SAMi will be configured to use the WiFi network your iPhone/iPod/iPad is currently connected to. If you do not use a password to connect to your network you can leave this blank.



Setup will then proceed. There are 10 steps that take 1-2 minutes total.



When complete you should see this message. If you get a failure message, check that you entered the correct WiFi password and repeat the setup.



Your camera is now ready for use. Press “Done” and after a moment you should see live video.



You can now disconnect the camera and move it to where you are going to use it. The best place is usually on a wall opposite the foot of the bed, about 6-7 feet off the ground and above a nearby outlet. Use an extension cord if necessary.



Peel off the red liners and press onto the bracket as shown. Peel off the black liners and attach to the wall. Important! Keep pressing for at least 30 seconds. For maximum strength wait one hour before proceeding. **IMPORTANT: If you are mounting the camera on the ceiling over the bed or in a location where if it fell someone could be hurt use the included screws and wall anchors instead.**

If you ever need to remove the bracket slowly pull each of the four tabs, one at a time, **along the wall**. The bracket will release.



Use a coin on top of the bracket to loosen the ball joint. Next attach the camera. To do this use one hand to hold the bolt and use your other hand to line up and rotate the camera on to it. Twist the plastic knob on the bolt to tighten.

Now aim the camera and tighten the ball joint. Plug the power cord into the back of the camera. Wrap the cord loosely around the bracket so it does not pull on the camera. Now plug the camera power adaptor into the wall outlet. Finally, remove the plastic film from the lens.



You can then use the display on the iPhone/iPod to confirm the aim. Typically an image as seen above is ideal.

Complete instructions on how to use SAMi:

<http://samialert.com/manual/> ← **Read this, there is lots of important information on how to use SAMi here!**

If you have difficulty, don't hesitate to contact us by emailing info@samialert.com.