



Content

From the President <i>Laurie Firor, ASLA</i>	1
Executive Committee Directory	2
Case Study: THE PUERTAS AT LOS SANTEROS <i>by Craig Campbell, ASLA</i>	4
Thesis Summary: Cultivating Ecoliteracy <i>by Amy Duckert, MLA</i>	6
Sponsors	8-10
Parking Day with SOCLAS <i>by Chance Munns, MLA candidate</i>	12
NMASLA Elects New EX-COM <i>by Laurie Firor, ASLA</i>	13
Golf Outing <i>by Tag Gay, ASLA</i>	14
NMASLA Contacts	15

*Printed on recycled
paper containing 30%
post-consumer waste and
processed chlorine free*



From the President

by Laurie Firor, ASLA

Farewell

The days are beginning to cool and the cottonwoods are turning a brilliant golden: sure signs of election season. I have enjoyed the last year immensely, but am so pleased to have Bob Oberdorfer return as Chapter President with a wonderful group of folks to run the show next year (please see the list of new officers for 2008-09). Thanks to all of the Ex-Com and Members for volunteering your time and skills to NMASLA! Fortunately, we've had an enthusiastic Ex-Com that has been busy organizing our myriad events. Its been a productive and rewarding year! Last December, past-president Pat Westbrook hosted a merry holiday gathering at her home. The creation of the first NMASLA calendar soon followed which served as a functional amenity as well as a public relations tool celebrating landscape architecture. We even spent some time at the Zia Arts and Crafts Fair to raise support and share our message. School to the World was a huge success of enthusiastic chatter and much interaction designing with New Mexican youth. At the Xeriscape

Conference, numerous members volunteered their weekend to share insight and experience with patrons at the EXPO.

In April, we showed support for National Landscape Architecture Month by hosting ASLA President Perry Howard for a whirlwind tour of NM with a reception graciously provided by Morrow Reardon Wilkinson Miller at their offices as well as at UNM's George Pearl Hall, the home of UNM's esteemed landscape architecture program. The UNM-MLA program was school to Tori Johnson, a student who won the chance to participate in the Chaumont-sur-Loire Garden Festival competition in France this year, in part funded by a donation from NMASLA. Since landscape architecture related courses of study are offered at numerous New Mexico institutions, we amended our Bylaws to include Student Affiliate chapters. In late April, NMASLA celebrated Earth Day at the ABQ BioPark with its First Annual Chalk Design Competition with a theme of evoking the quintessential NM landscape. Somewhere in the mix, we lobbied our legislators locally and on Capital Hill. The momentum

"From the President" continued on page 2

NMASLA 2007-2008
Executive Committee
Directory

President

Laurie Firor
505-764-9801
Firor@consensusplanning.com

**Vice President &
President Elect**

Lisa Powell
505-830-5400
lisa.powell@hdrinc.com

Past President

Pat Westbrook
505-881-3062
cpatwestbrook@comcast.net

Secretary

Genieve Sanchez-Yorman
505-764-9801
gyorman@consensusplanning.com

Treasurer

Aaron Zahm
505-898-9615 ext.2008-
AZahm@hulc.com

Trustee

Gregory Miller
505-268-2266
gregmiller@mrwnm.com

Members-at-Large

Juli Niemann
505-248-6635
juli_niemann@fws.gov

Katie Paquette
505-822-8200
kpaquette@dpsabq.com

**Member-at-Large &
Web Site Manager**

Rob Loftis
505-268-2266
rloftis@mrwnm.com

Associates-at-Large

Sara Zahm
505-868-9615
saraz@dpsabq.com

Lisa Burkstaller
505-254-3538
lburkstaller@yahoo.com

"From the President" continued from page 1



Landscape Tour June 7, 2008. Photo by Laurie Firor

stayed strong with the return of the Spring Landscape Tour in June. The gardens were divine as usual and the addition of a pre-event orientation (superbly hosted by the Zahm family) was a smashing addition this year. The end of Summer is always an indicator that the Annual Golf Tournament is near. We flashed to the past with the welcome return to Desert Greens Golf Course as our destination. After an informative presentation from Dave Dreeson of the Natural Resources Conservation Service (NRCS), our bellies full, door prizes awarded, and clubs in hand, we hit the greens full of vigor. Thanks so much to Tag Gay who organizes nearly every detail every year of this grand event! Thanks, too, to our wonderful sponsors who make this event a reality!

It's been a busy year and there is more excitement still to come.

Our annual professional/student mixer will be an opportunity for our variety of members to mix and mingle. Come on out for food, friends, and inspiration! In late September, Exerplay, in coordination with Landscape Structures, is generously sending several of our members to LSI headquarters in Minnesota for a Learning Seminar entitled Environmentally Preferable Playground Purchasing that is pre-approved for CEUs (more info: contact Greg Neal of Exerplay #505-577-7004 or greg@exerplay.com).

In October (3rd-7th), the ASLA Annual Meeting & EXPO will be in Philadelphia. With a speaker lineup to include Charles Birnbaum & Cornelia Oberlander, Green Infrastructure: Linking Landscapes + Communities is destined to be a memorable and rewarding event. Those of us

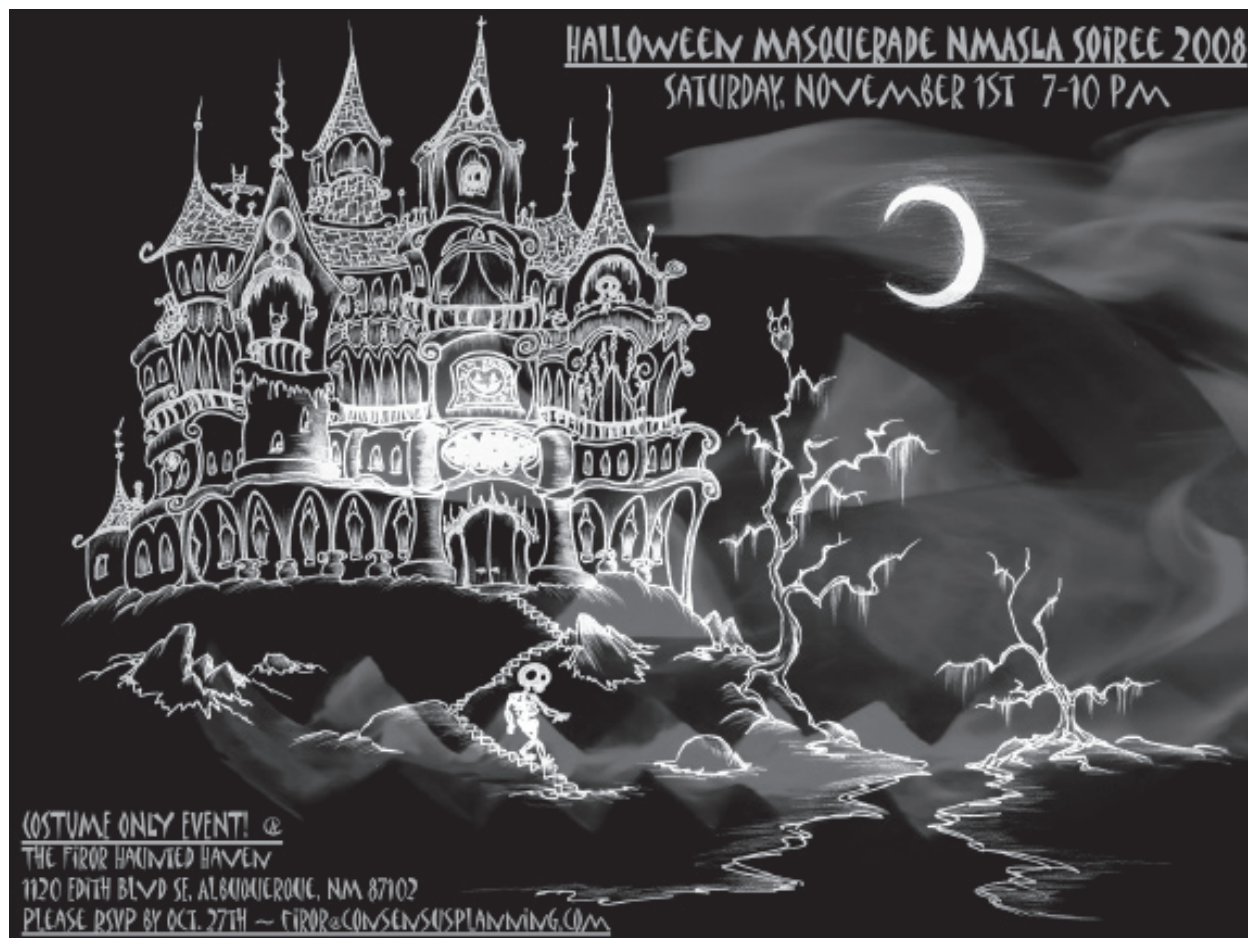
still here in the 505 will hit the commencement of ABQ's International Balloon Fiesta (October 4th-12th). No worries for the folks in the City of Brotherly Love, as the balloons, from the breathtaking to the strangely unique, will still be covering the sky when you return. This event also signals pulling out your winter wares as Autumn has arrived. Strap on your hiking boots and hit the trails to enjoy watching the foliage transform into luminous shades! As the days

get colder and darker, Halloween will be here before we know it. Get your costume ready as NMASLA is going to kick-off the holiday season in style this year with a festive Halloween Masquerade Soiree! So, who plans to come as FLO? I look forward to seeing you all there if you dare! Whoahahahaha!

☪

To comment on the President's message, please email responses to Laurie:
Firor@consensusplanning.com

"Numerous members volunteered their weekend to share insight and experience with patrons at the EXPO."



Case Study: THE PUERTAS AT LOS SANTEROS

by Craig Campbell, ASLA

Location:
**LAS CAMPANAS, SANTA FE
COUNTY**

Developer/General

Contractor:

Barranca Construction

Landscape Contractor:

Lee Landscapes

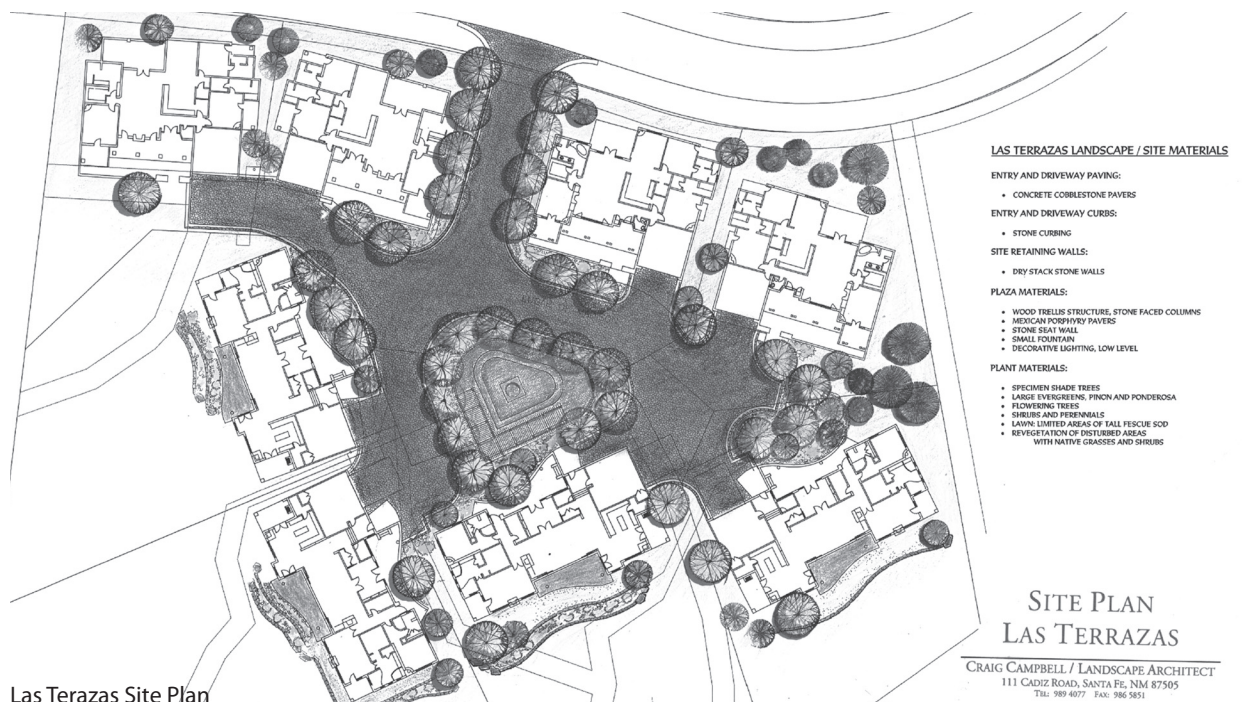
Owner: VARIOUS

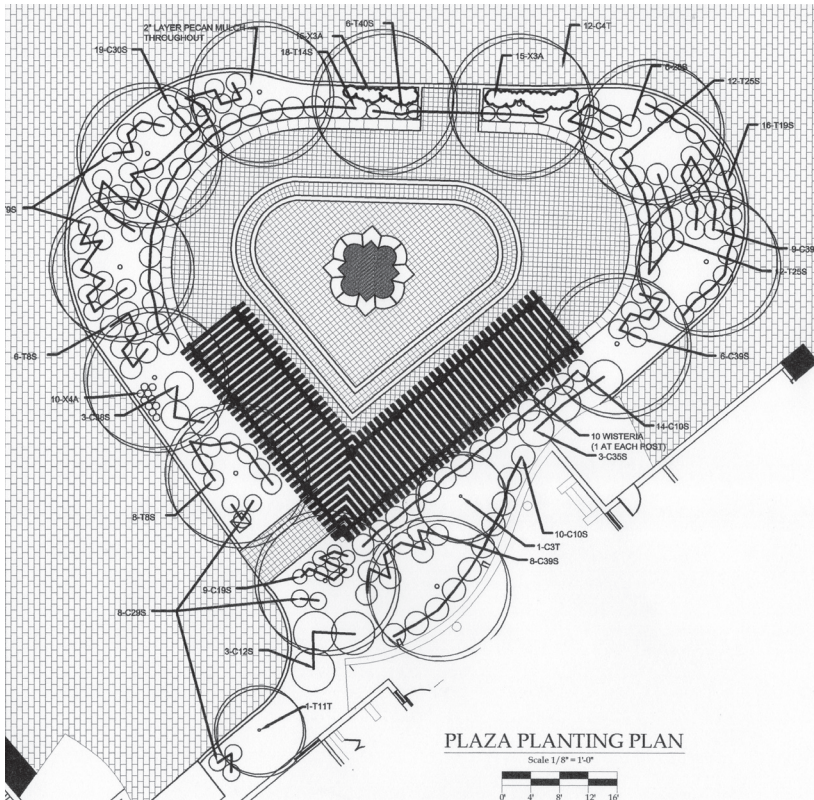
The "Puertas at Los Santeros" project (originally named "Las Terrazas") is located within the high end Las Campanas subdivision located to the west of the City of Santa Fe. While the majority of the development

in Las Campanas has been in the realm of low density, the Los Santeros tract was planned around a residential mix of attached 'casita' units, zero lot line condos, larger single family lots, and in the case of the Puertas, a compound type configuration of eight detached units clustered around a central plaza. The project had been initially started by another developer and was taken over by Barranca Construction who contracted with Turner Lechner Romero Architects to redesign the buildings and with my office to develop a detailed site plan with a central plaza. This high end project was aimed toward second (or third!) home buyer with prices starting around \$800,000. The developer

chose a theme combining both contemporary and traditional elements in the architecture. With a somewhat vague theme inspired by a Mexican village, the architect had chosen Mexican porphyry and cantera stone elements for window surrounds and parapets on the residences

The scope of work for the landscape architect included development of an overall site plan to address grading and drainage issues, create an attractive central space with the sound and sight of water, and to provide a design for an attractive vehicular circulation system hardscape. In order to better integrate the site with the architecture, a plan was developed that included a





Plaza Planting Plan

major “L” shaped trellis shade structure with cantera stone faced posts. The trellis structure incorporated a stone seatwall with Colorado Red sandstone caps along the outside edge bordering a stepped down sunken plaza area with a traditional fountain. In addition, the plan created a vehicular hardscape of tumbled concrete pavers (Pavestone) with porphyry curbs to create a semblance of a Mexican cobblestone street. The pavers allow for infiltration of rainfall runoff to a large degree while providing a unique texture and mix of soft earth colors. This installation of pavers – around 15,000 square feet – repre-

sented one of the largest paver projects in the state. Concrete pavers of smaller size were employed within the plaza area and carefully integrated at the perimeter intersections with the vehicular paving to provide an uninterrupted textural mosaic, with mainly a change of scale rather than the usual abrupt change of materials.

While ‘hardscape’ dominates central portion of the project, all other areas between units and within the site were revegetated with native shrubs and grasses. In the more highly maintained central areas, a wide variety of plants were utilized with the objective of

providing an attractive appearance year round. Toward that end, shrubs such as Moonlight Broom, Mugo pine, Santolina, hardy iceplants, Cutleaf Buchthorn and a variety of other plants were employed along with Honeylocust and Ash shade trees and flowering crabs.

As previously mentioned, the landscape architect was responsible for the detailed site grading; location and elevations of catch basins and inlets; outdoor lighting; all site details including seatwalls, steps, trellis, paving, fountain, etc. The quality of the landscape/hardscape has been widely recognized as one of the best examples of a development in the Santa Fe area that confers high value to the design of outdoor spaces.

The biggest challenge to the landscape architect was posed by the need to design the site within the confines of a pre-existing building unit layout and finish floor elevations, providing both vehicular and pedestrian areas with subtle grade transitions and proper surface drainage within a tight space. Secondarily to provide a sense of quality, unity, and timelessness in the space available for the common area site design. A major challenge was presented by an unrealistic timetable for construction that required landscape

“Case Study” continued on page 11

“This installation of pavers – around 15,000 square feet – represented one of the largest paver projects in the state.”

Thesis Summary: CULTIVATING ECOLITERACY:

Edible School Garden Design for Albuquerque, New Mexico

by Amy Duckert, MLA

Project Statement

Using an interdisciplinary approach to successfully integrate principles of sustainable landscape design and education for ecoliteracy, this study explored the role landscape architects can play in building ecologically literate communities. Building on a base of theory and practice, this study demonstrated how an edible school garden can be an essential and unifying component of schoolyard ecosystem design in an Albuquerque public elementary school.

Need for the Study

An edible school garden, as part of the larger schoolyard ecosystem, is unique to its location environmentally and culturally. It provides a strong core to the schoolyard ecosystem because it familiarizes students with local food, water, waste, energy, and social systems at an accessible and relevant scale. This project addressed that as of this writing, there are no guiding precedents for edible school gardens as a unifying component to schoolyard ecosystem design. Additionally, while helpful examples of statewide, district-wide, and school-wide edible garden programs exist in other locations, no models apply perfectly to public schools in Albuquerque. Albuquerque landscape architects need a framework to assist in the design of edible gardens as unifying components of schoolyard ecosystems. Understanding the capacity of edible school

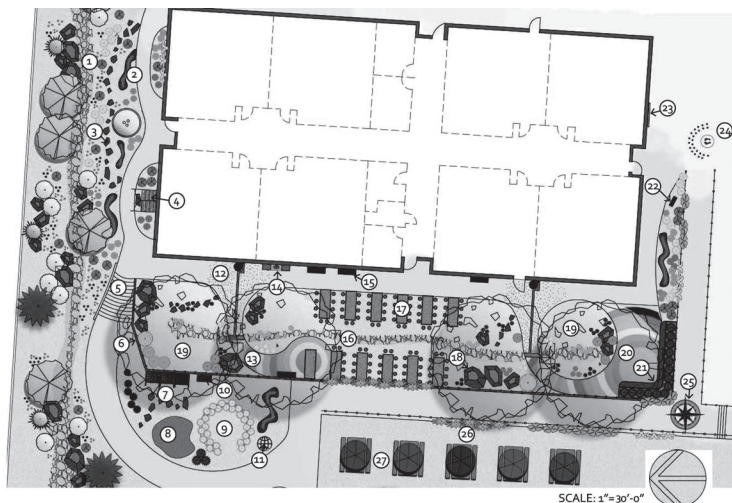
gardens as central and unifying features of schoolyard ecosystem design as well as the ability of these gardens to facilitate interdisciplinary, integrated curriculum is the first step in developing a framework and guide for schoolyard ecosystem design in Albuquerque.

Schoolyards are an ideal location to give children an opportunity to experience first-hand their local natural and cultural environments. The benefits of healthy schoolyard environments integrated with daily school activities are conclusive as the quality of the physical environment of a school clearly makes a difference in how, what, and why students learn (Lieberman and Hoody, 1998, Katz, 2006 and Glenn, 2000). Unfortunately, many school environments are devoid of these types of opportunities to interact with nature. Acres of treeless asphalt cover valuable land lying fallow, marked by all-too-familiar metal and plastic play structures that provide a highly controlled monoculture of play environments. Landscape architects are therefore charged with the duty of working with school communities to design educational landscapes that facilitate place-based education for ecoliteracy.

Methods and Results

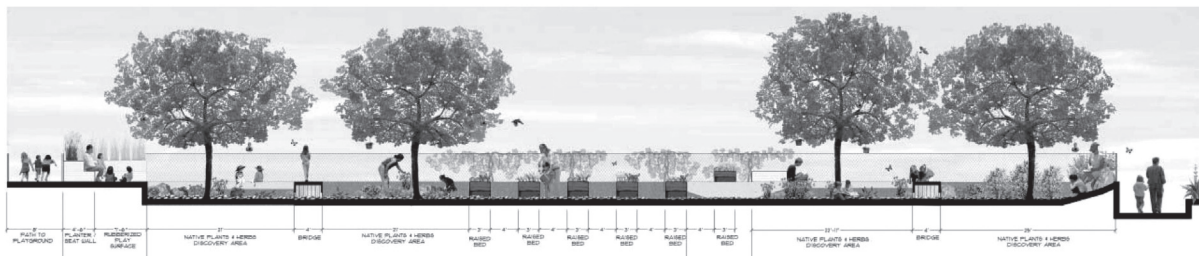
In a review of literature, this study considered the world-views behind many of today's environmental problems, and

Onate B Building Garden Plan



"The benefits of healthy school-yard environments integrated with daily school activities are conclusive

....



North/South Section, looking West

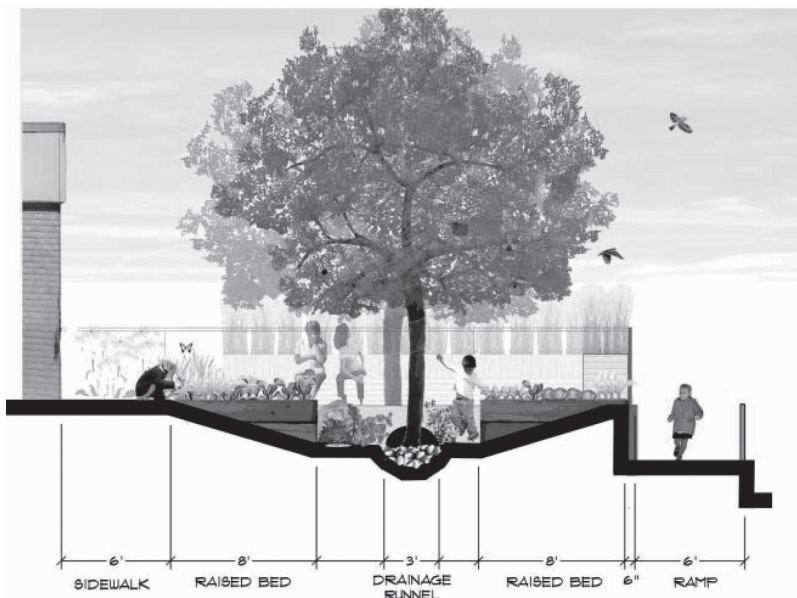
how a shift to a paradigm of ecoliteracy is changing the organization and goals of major institutions in business, education, and design. This shift has been caused by a new understanding in the scientific community about the importance of quantum physics (a world of interrelationships) as compared to the previous focus on the Newtonian and Cartesian models of science (a world of discrete and disconnected objects) (Wheatley, 1992). An investigation into the

brief history of school gardens in America revealed how garden pedagogy can reflect and reinforce these evolving worldviews. Finally, a review of previous studies in schoolyard design and exemplary edible school garden programs generated a preliminary framework for edible school gardens as unifying components of schoolyard ecosystem design.

To further refine the framework for use in the Albuquerque Public School District, a pre-

cedent study of existing edible school garden programs in the Albuquerque area was conducted. Additionally, a year-long pilot study at Oñate Elementary in Albuquerque gave the author an opportunity to apply the preliminary theoretical framework to help a school community design and build an edible school garden in Albuquerque. This framework was applied in the design for B-Building Garden, an edible school garden for kindergarten and first grade classes at Oñate Elementary. The pilot study also allowed for the development, testing, and revision of a set of curricular experiences to support edible school garden design while teaching concepts of landscape design, ecoliteracy, required subject matter content, and learning processes for kindergarten and first grade students. This series of lesson plans demonstrates how the edible school garden design process can be a part of everyday school activities and provide interdisciplinary experience with the major themes of ecoliteracy, state

East/West Section, looking North



"Thesis Sum." continued on page 12



Santa Fe Classic Rock

phone 471-3553
 fax 471-8493
 2865 Rufina Street, SF, NM

phone 474-4332
 fax 474-4549
 16 Colony Drive, SF, NM

Greetings ASLA Members, We are the "Home" of Santa Fe Brown[™] Gravels, and are pleased to be a new sponsor of your group.

We mine and process 'Santa Fe Brown'[™] on the west edge of Santa Fe, NM.

We currently have reserves to supply you for the next 20 years.

Please call us if you would like samples of our products, names of local suppliers, or maybe even a tour of our facilities and huge inventory.

Thank you,
 Tony Tucker 505-553-0208
 Don Eker 505-473-9815
 ps. More Rock, Less Talc



**CLASSIC
 ROCK**

**We
 Dig
 It.**

*Thank you
NMASLA sponsors,
for your support of
the organization.*

<i>Loving & Associates, Inc.</i>	
MANUFACTURER'S REPRESENTATIVES	
Jan Loving	
Phone: 505-299-1122 • Fax: 505-275-1713 2617 Rhode Island NE • Albuquerque NM 87110 www.loving-assoc.com jan@loving-assoc.com	



rganicTechnology
INTERNATIONAL

The Science of Nature



**Approved by
The New Mexico Organic Commodity Commission**

*Over A Decade of Proven Results in Soil &
Water Management Around the World*

**Guaranteed Results
50% Water Savings**

- ◆ Customized Soil & Plant Testing
- ◆ Manufacturing, Blending & Product Applications
- ◆ Athletic Fields, Sports Complexes & Golf Courses
- ◆ New Construction and Landscape Retrofitting
- ◆ Commercial & Residential Turf and Landscapes
- ◆ Vineyards, Nurseries, Orchards & Gardens

**Biological Inoculants & Soil Conditioners
Bio/Organic Nutrients, Dry & Liquid Blends
Educational Seminars - Soil & Plant Nutrition**

505.291.1100 www.otlusa1.com Fax: 271.1600

Imagine · Build · Play

Playgrounds Athletic Field Equipment

Skate Parks Site Furnishings

Aquatic Play Shade

exerPlay, inc.

www.exerplay.com

Accent Landscape Contractors, Inc.

SERVE OUR CUSTOMERS FOR OVER 25 YEARS

Accent Landscape Contractors is ready to handle the most demanding projects. We work closely with our clients to provide cost effective and creative solutions.

Our expertise includes:

- Landscape Preparation and Installation
- Irrigation Systems
- Utility, Power, Water & Sewer
- Water Features
- Parks & Athletic Fields
- Golf Courses
- Street Scapes
- Academic Facilities
- Military Housing
- Federal & State Hwy Projects

Visit us on the web for more information:

www.accentls.org

Albuquerque Location:

3525 Girard Blvd NE
 Albuquerque, NM 87107
 (505) 881-4880 Office
 (505) 889-9446 Fax

Texas Location:

150 Easy Way
 El Paso, TX 79932
 (915) 585-1693 Office
 (915) 585-1695 Fax

Two locations
 to better serve our clients in the
 Southwest!

"Case Study" continued from page 5

elements to be complete while residential construction was still underway. This ultimately resulted in a major payment dispute between the landscape contractor, Lee Landscapes, and the developer/general contractor which ultimately went to mediation and finally arbitration. My decision to submit a deposition in support of the position of Lee Landscapes resulted in my withdrawal from further work with a client who had previously been responsible for about a

third of all my work.

The only other unfortunate aspect to the project, in my personal view, is the fact that the preponderance of Puertas unit owners are wealthy part time residents who do not provide the presence and level of activity that the plaza area was intended for. Rather than an empty plaza; one would wish to see lots of activity and users of all ages, generally absent from this otherwise wonderful space. While proud of the project from a design

standpoint, I cannot but help wishing to see the same quality objectives, materials, and funding applied to more of our public spaces in New Mexico.

CS

craigc@cybermesa.com

Puertas Plaza. Photo by Craig Campbell



"Thesis Summary" continued from page 7

content standards, and learning processes for kindergarten and first grade.

Further research is needed to better understand components of successful school garden design in Albuquerque as well as how the design of successful edible school gardens, as unifying features of healthy schoolyard ecosystems, can be supplemented by the design and redesign of the whole schoolyard environment.



aduckert@gmail.com

Building the Garden, May 2008.

PARKING DAY WITH SOCLAS

by *Chance Munns*,
MLA candidate

National Park(ing) Day 2008 made its way to Albuquerque on Friday, September 19 when volunteers from Consensus Planning and students from the University of New Mexico Landscape Architecture Department constructed a public park within two parallel parking spaces on the south side of Central Avenue across from Pearl Hall. The park was installed Friday morning by volunteers from the

Society of Landscape Architect Students who continued to occupy the space throughout the day and talked to visitors about the need for more green space in our cities as well as the creative potential of streets and parking spaces.

All day people circulated through the park and contributed to the public atmosphere that was the goal of the park. The putting green was a source of interest as visitors were able to sink a few and even challenge some students to competitive putting games. Those who visited the park were offered drinks and snacks while they enjoyed Albuquerque's newest green space. Plenty of seating was available and several visitors were able to relax and just enjoy the interaction with strangers that continually passed by. The park and the whole event was a huge success and we look forward to building even more parks next year.

Special thanks is extended to Plants of the Southwest for donating a Hawthorn and several Sand Dropseed for the day. Also, John Barney, professor of the third semester graduate studio, donated leftover sod and concrete pavers that really transformed the identity of what was previously known as parking spaces. Graduate Landscape Architecture students delivered personal outdoor items from home, so by the time everything was put together a marvelous park had emerged. Cooperation from Albuquerque's



NMASLA ELECTS NEW EXECUTIVE COMMITTEE FOR 2008-2009 YEAR

by Laurie Firor, ASLA

PRESIDENT

Robert Oberdorfer, ASLA (rmo@rtiabq.com, 505-243-7300, Resource Technology)

PAST PRESIDENT

Laurie Firor, ASLA (firor@consensusplanning.com, 505-764-9801, Consensus Planning)

PRESIDENT-ELECT

Patrick Gay, ASLA (pgay@sites-sw.com, 505-822-8200, Sites Southwest)

SECRETARY

Juli Nieman, ASLA (Juli_Niemann@fws.gov, 505-248-6635, USFWS, Southwest Region)

TREASURER

Aaron Zahm, ASLA (azahm@hulc.com, 505-898-9615, Heads Up Landscape Contractors)

TRUSTEE

Greg Miller, ASLA (gregmiller@mrwm.com, 505-268-2266, MRWM)

MEMBERS-AT-LARGE

Katie Paquette, ASLA (katiep@dpsdesign.org, 505-761-9700, Dekker/Perich/Sabatini)

Sara Zahm, ASLA (saraz@dpsdesign.org, 505-761-9700, Dekker/Perich/Sabatini)

ASSOCIATES-AT-LARGE

Lisa Burkstaller, Assoc. ASLA (lburkstaller@yahoo.com, 505-822-8200, Sites Southwest)

Genieve Yorman, Assoc. ASLA (gyorman@consensusplanning.com, 505-764-9801, CP)

Sergio Yamada, Assoc. ASLA (SergioY@dpsdesign.org, 505-761-9700, D/P/S)

Elise Welch, Assoc. ASLA (ewelch@sites-sw.com, 505-822-8200, Sites Southwest)

Amy Duckert, Assoc. ASLA (aduckert@gmail.com, 505-268-2266, MRWM)



"SOCLAS" continued from page 12

City Parking Division Manager, Dave Petrov, allowed the event to continue throughout the day without hassle. Rebar and The Trust for Public Land started National Park(ing) Day last year and continue to support volunteers in cities across America that wish to participate by mailing handouts and flyers to participants and advertising on their website with maps and descriptions. Pictures of National Park(ing) Day can be found online at <http://www.flickr.com/groups/2008parkingday/> and pictures of Albuquerque's contribution are found by clicking 'search' and then typing "albq" or "chance munns" in the command line.

Thanks to all who contributed their time, materials, labor, thought, and company to this effort.

Past President Jennifer Oram entered her third year of the UNM MLA program and passed the leadership to second year MLA students during the Society of

Landscape Architecture Students (SOCLAS). The new officers were chosen by the draw from a hat.

PRESIDENT: Kristina Guist
VICE PRESIDENT: Ruth Currey
SECRETARY: Elaine Stevens
TREASURER: Aaron Coffeen



SOCLAS participated in National Parking Day: September 19, 2008.



ANNUAL NMASLA GOLF OUTING

by Tag Gay, ASLA

As we move into our second decade of hosting the NMASLA Golf Outing, I am encouraged to see the landscape community gather to support our chapter. The tournament was held on August 22, 2008 at the beautiful Desert Greens Golf Course in Paradise Hills and again proved to be a huge success. This year we raised over \$3,500.00 to support our programs and events.

It was exciting to have Dave Dreesen speak at our event this year. The expertise collected from

his work at the Los Lunas Plant Materials Center and his commitment and passion to his work provided refreshing ideas for our profession.

Congratulations to the following participants for their success on the course:

First Place Team – Gilbert Contreras, John Mondragon, Greg Miller, and Brian Bobeck

Sixth Place Team – Danny Rodriguez, Ron Douglas, Jeff Mulbery, and Mike Balaskovits

Putting Contest – Jeff Popenoe

Longest Drive – Blake Gammill

Our sponsors came through in a big way this year and this event is only possible with their generous cooperation and support. Thank you to the following organizations for making this year's tournament another winner:

DRINK SPONSER

- Hunter Industries

LUNCH SPONSERS

- Mountain West Golfscapes
- Playwell Group
- Santa Fe Classic Rock
- Heads Up Landscape Contractors
- Triple M Recreation

SPECIALTY HOLE SPONSER

- Materials Inc./Buildology

Team CP: Nicole Sanchez-Howell, Jim Strozier, Genieve Yorman (seated) Photo by Laurie Firor



"Annual NMASLA Golf Outing"
continued from page 14


HOLE SPONSERS

- Bohannon Huston
- Organic Technology International
- Trees of Corrales
- Exerplay
- Santa Fe Classic Rock
- Westwind Landscape
- Pavestone
- Accent Landscaping

- Southwest Block
- Mountain West Golfscapes
- Keystone Retaining Wall Systems

I would like to thank Lisa Powell and Sasha Needham for their hard work coordinating the guest speaker portion of the event. I would also like to thank Aaron Zahm, Laurie Firor, and Genieve Yorman for their great help in

organizing this event. We could not have done it without them. Special thanks go to Consensus Planning for again providing the graphics for all the sponsor boards.

Next year's Golf Outing has been scheduled for August 21, 2009, so mark you calendars. 

tag@westwindlandscape.com

Chapter Meetings

Weck's Restaurant, 3913 Louisiana NE, Alb, NM (505-881-0019), located on the west side of Louisiana just south of Montgomery Blvd. Please join us for chapter meetings, usually held the second Tuesday of the month at 11:30 a.m. *Guest Speakers suggestions?* Contact Lisa Powell (505-830-5400)

Saturday November 1 Halloween Masquerade Soire 2008, 7-10 p.m.

Costume Only Event
Firor Haunted Haven, 1120 Edith Blvd., ABQ, NM.
RSVP by October 27 to
Firor@consensusplanning.com

Tuesday, December 16

Speaker: TBA

Events

**ASLA Annual Meeting:
Philadelphia, Pennsylvania
Convention Center
October 3-7, 2008
ASLA Expo: October 4-5, 2008**

GRADING & DRAINAGE EXAM PREP COURSE

By Jay Hastings, author of many prep materials, in Las Vegas on October 17, 18, and 19. \$250 for ASLA members. Contact Tammy: Gaudet@wlbgroup.com

Living Landscapes: An international conference on performance, landscape and environment. For information on registration (after 1 October) please see: www.landscape.ac.uk/2009conference.html

Exploring Economic & Ecological Strategies for Community Planning & Design in the Semi-Arid Southwest: Conference/Workshop

Tuesday & Wednesday, March 17-18, 2009 Texas Tech campus, Lubock, TX. Sponsor: the Departments of Landscape Architecture, Natural Resource Management and Agricultural and Applied Economics. Contact: Charlie Klein: assoc.prof.charles.klein@ttu.edu

Membership & Address Changes

Please email Genieve Yorman: gyorman@consensusplanning.com

Newsletter

The NMASLA newsletter is produced by students in the MLA program at the University of New Mexico School of Architecture and Planning. Please submit articles, news, photos, corrections, etc., to the next editor: Ryan Anderson ry.anders@gmail.com
Elaine Stevens (current editor) esteven1@unm.edu

Website

NMASLA website Information

Please contact website manager: Rob Loftis rloftis@mrwnm.com
<http://host.asla.org/chapters/newmexico/calendar.htm>

Printed on recycled paper containing 30% post-consumer waste and processed chlorine free.





New Mexico Chapter
American Society of Landscape
Architects

Landscape Architecture Program
University of New Mexico
School of Architecture and Planning
MSC04 2530
2401 Central NE
Albuquerque, NM 87131-0001

PRSRT STD
U.S. Postage
PAID
Albuquerque, NM
PERMIT # 1238