

The Common Core State Standards

A guide for Rhode Island parents

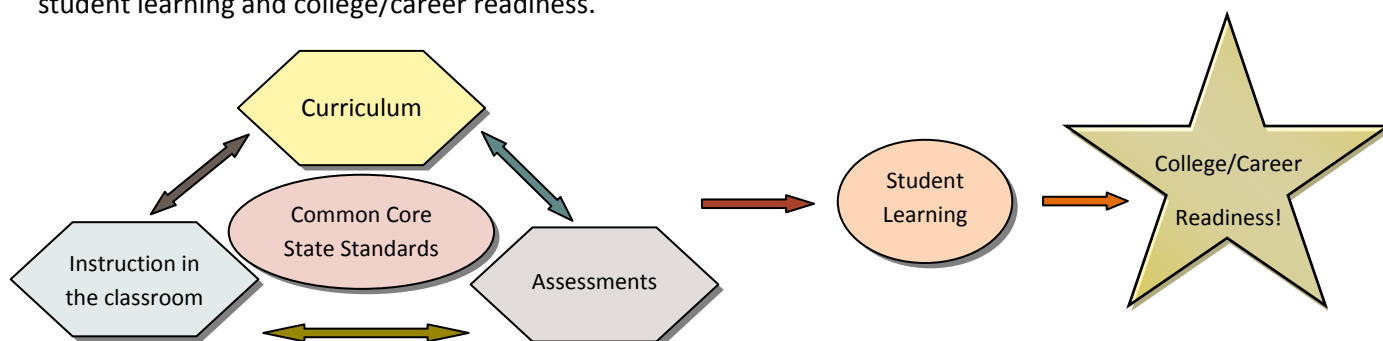


R.I. Department of Education (RIDE)

This guide provides an overview of the new Common Core State Standards (CCSS), how they will impact your child's education, and what you can do to help ensure your child's success in school.

What are content standards and how are they used?

- ◆ **Content standards** provide clear, consistent expectations about what knowledge, skills, and practices students should have and learn at each grade level so teachers and parents know what they need to do to help students achieve them.
- ◆ Standards guide both **curriculum** (the subject matter that is taught at each grade level) and **assessments** (tests that determine the level of learning a student has achieved).
- ◆ See the graphic below for an illustration of how standards-centered instruction, curriculum, and assessments drive student learning and college/career readiness.



What are the Common Core State Standards (CCSS)?

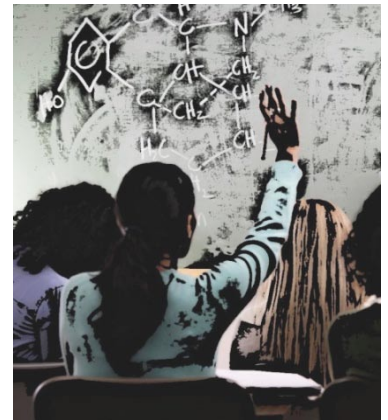
- ◆ The CCSS set high standards for English language arts (ELA) / literacy and mathematics so that students graduating from high school are prepared to enter college and/or the work force.
- ◆ Teachers and content experts from many states worked together to write the CCSS based on the highest state standards in the U.S. and on the standards of other high-performing countries.
- ◆ More information on the CCSS can be found at www.ride.ri.gov/instruction/CommonCore.aspx

Why are we adopting new content standards in Rhode Island?

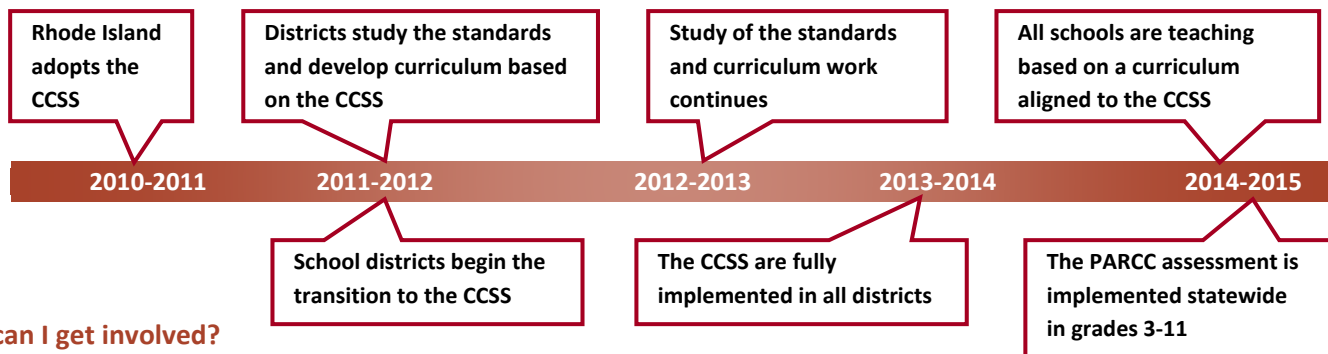
- ◆ Rhode Island adopted the CCSS in place of a planned update to our current Grade Level Expectations (GLEs) and Grade Span Expectations (GSEs) for mathematics, reading, and written/oral communication.
- ◆ Rhode Island is one of **44 states** across the country that have adopted the CCSS. This is a great opportunity to work with other states to support CCSS implementation!
For example, Rhode Island is partnering with other states to develop:
 - A new statewide assessment which will replace the NECAP (New England Common Assessment Program)
 - A new alternate assessment which will replace the RIAA (Rhode Island Alternate Assessment)
- ◆ PARCC (Partnership for Assessment of Readiness for College and Careers) is an end-of-year assessment that will replace NECAP in 2014-15 for ELA/literacy and mathematics.
- ◆ More information on PARCC can be found at www.ride.ri.gov/assessment/PARCC.aspx

How will the CCSS impact my child's education?

- ◆ Your child will continue to receive high quality education during our state's transition to the CCSS during the next few years.
- ◆ All districts will be using the CCSS. Districts will align curricula to the CCSS by the 2014-15 school year, before the new PARCC assessment takes place.
- ◆ Aligned curriculum, instruction based on the curriculum, and information from the PARCC assessment will prepare your child for success in college or the workforce after high school graduation.
- ◆ English Language Proficiency Standards for English Language Learners will be adjusted to reflect the CCSS.



What is the timeline for implementation of the CCSS and the new PARCC assessment in Rhode Island?



How can I get involved?

Parents' involvement with their children's education is a critical factor for success. There are many ways that you can be involved to help ensure this success:

- ◆ Stay informed about what's happening in your child's school:
 - go to parent nights, parent-teacher conferences, and other school activities
 - talk with your child's teacher(s) about your child's progress
 - join your local parent teacher organization (PTO/PTA)
 - volunteer at your child's school
- ◆ Talk to your child's teacher to find out the best way to help your child with his/her homework.
- ◆ Encourage your child to put an effort into his/her school work and acknowledge his/her efforts as well as successes.
- ◆ Make sure that your child has the time and space to complete homework assignments without distractions every day.
- ◆ Read about CCSS and PARCC. Ask your child's teacher or principal if you have questions.

Where can I find additional information about the CCSS and PARCC assessment?



CCSS and PARCC transition information on the RIDE website:

www.ride.ri.gov/Division-EEIE/transition.aspx



Common Core State Standards Initiative website:

www.corestandards.org/



National PTA website with CCSS information for parents:

www.pta.org/4446.htm



PARCC website:

www.parcconline.org/



This brochure can be downloaded from www.ride.ri.gov/Instruction/docs/CommonCore/CCSS_Guide-Families.pdf