

AMERICAN
art
COLLECTOR

WATCH 3 VIDEOS
IN THIS ISSUE



DISPLAY UNTIL 1/28/16

\$6.95



0 74470 02541 2

*Also Showcasing
Glass, Ceramics & Wood*

Serene Moments

The ancient Egyptians believed if they adorned the walls of a tomb or crypt with food and other ordinary items, these would become real and available to the deceased in the afterlife. Other ancient cultures, such as the Greeks and Romans, also depicted commonplace materials in art. Today, collectors and art lovers alike are drawn to still lifes, from vast floral arrangements to a setting on a table, or items used in work and play to even objects that can recall childhood memories.

Often people go throughout life in ignorance of the beauty around them. Artists, however, bring out the beauty and truth of a surrounding world. In particular, many artists who create still life pieces bring to life items that are used daily.

Still life art comes from various means of inspiration, and can consist of a multitude of subject matter. From the natural—food, flowers, plants—to the artificial—domestic items, drinking glasses, vases, jewelry, objets d'art, books—the spectrum is whatever seems to spark an interest in the eye of the artist.

Artists work to create the perfect composition of such items to maintain an eye-catching and natural look. Focusing on aspects of light and shadows, textures and coloring for each arrangement, artists work to create a still life masterpiece.

In the pages of this special section is a selection of still life works created by artists throughout the country represented by some of the nation's top galleries. Specializing in traditional and contemporary

1
Lotton Gallery,
Cherries II, oil on
panel, 12 x 16",
by Steven Jones.

2
Lotton Gallery,
Grow, Crawl, Fly,
oil on linen, 20 x 16",
by Yana Movchan.





still life works, these artists show this enduring genre.

LOTTON GALLERY

900 N. Michigan Avenue, Level 6
Chicago, IL 60611, (312) 664-6203
www.lottongallery.com

Lotton Gallery gives their collection of floral still life paintings prominence. Thus, they are highly invested in two artists of distinction in this genre: **Yana Movchan** and **Gyula Siska**.

Movchan's exceptional talent and technique is evident and unsurpassed. Her paintings reflect exuberance for life and beauty in nature. Movchan's *Grow, Fly, Crawl* is in a class of its own.

Siska's lively floral still lifes beckon to the great Dutch masters, in both spirit and



skill. His classical training in his native Hungary honed his light and expert touch, and his delicate approach is extraordinary.

A new addition to Lotton Gallery is artist **Steven Jones**, who studied technique mixte in Paris. This method uses solid tempura underpainting with oil glazes, similar to the 15th-century Flemish approach.

ANN SWITZER

(415) 927-9002, ann@annswitzer.com
www.annswitzer.com

Contemporary realist **Ann Switzer** chooses colorful vintage objects and toys as her subjects, bringing them to life in a fresh and whimsical way. "I am fascinated by the beauty and charm of these discarded objects," she says. "I love creating arrangements in which the toys take on personalities and tell a story."

The careful rendering of fine detail is characteristic of her style. Switzer is a member of the International Guild of Realism and an associate member of Oil Painters of America.

ANGELA NESBIT

Charlotte, NC, (704) 560-1338
angelanesbit@mac.com
www.angelanesbit.com

Angela Nesbit's most recent body of work continues to be an exploration of surface and luminosity. Atlanta gallery Huff Harrington Fine Art called Nesbit's paintings "absolutely gorgeous, so rich in palette, textural and luminous" when describing her August 2015 show, *Synergy*.

"I continue to find ways to create as much chaos on the canvas as possible, paying close attention to the emanating light, and trying to obscure my subjects in subtle ways," Nesbit says. "I strive to create an energetic, mesmerizing painting that entertains the



3
Angela Nesbit,
Wild Bunch, oil,
48 x 36"

4
Lotton Gallery,
*White and Red Tulip
with Roses*, oil on
panel, 31½ x 23½",
by Gyula Siska.

5
Ann Switzer,
Is For...?,
oil on panel,
11 x 14"

6
Lotton Gallery,
*Bouquet with
Butterfly & Apples*, oil
on panel, 40 x 31",
by Gyula Siska.

7
Angela Nesbit,
Joyful Tulips, oil,
40 x 40"





8
Lange Marshall,
Red Espresso Cup,
oil on linen, 16 x 20"

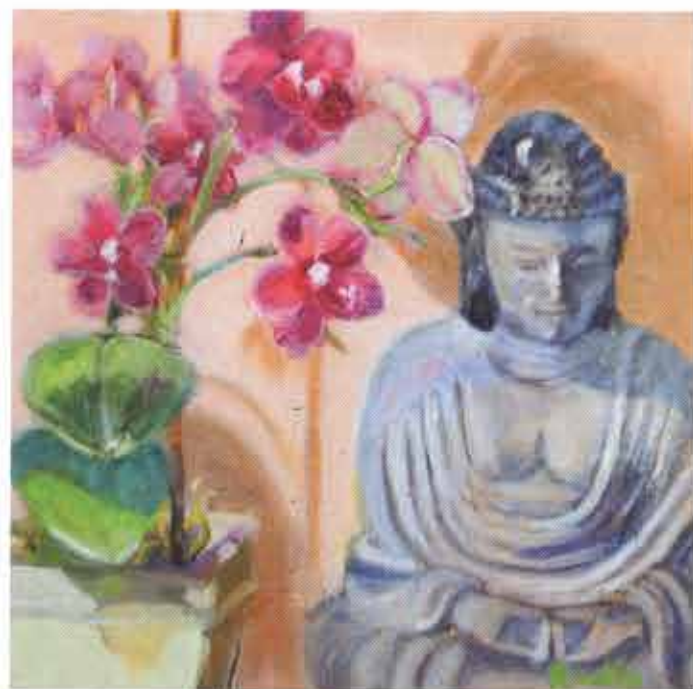
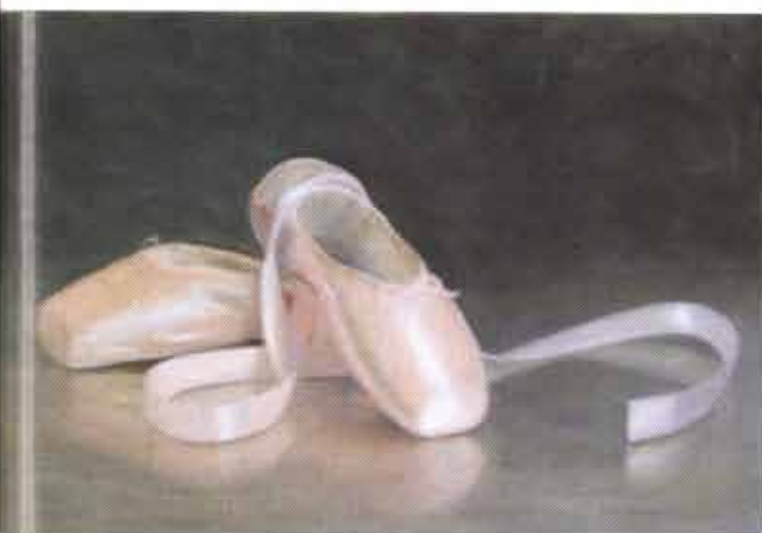
9
Lange Marshall,
*White Pumpkins and
Persimmons*, oil on
linen, 18 x 18"

10
Angela Nesbit,
Pink Party with Pears,
oil, 36 x 30"

11
A.C. Lindner,
Ballet Pointe Shoes,
oil on board, 11 x 17"

12
Sally Ruddy,
Buddha with Orchid,
oil on canvas, 10 x 10"

13
Sally Ruddy,
Pansy Tea, oil on
canvas, 6 x 6"



viewer for a little bit longer."

Nesbit will teach a number of workshops in 2016, including several on still life painting. Her schedule and current works can be found on her website. Gallery representation and workshop inquiries are welcome by email.

LANGE MARSHALL

www.langemarshall.com
Greenberg Fine Art, 205 Canyon Road
Santa Fe, NM 87048, (505) 955-1500

When Lange Marshall works

on her art she says it feels like a meditation. "The process of painting or drawing is a great way to stay centered," Marshall says. "I am inspired by nature and the intensity of colors. I work on capturing that intensity of color and light in my work. The way I place objects in my still life setups is very important in creating a pleasing composition and color harmony."

Marshall always paints from



life and uses both oil and watercolor. Watercolor allows her to play and experiment with colors.

Marshall is represented by Greenberg Fine Art in Santa Fe, New Mexico.

A.C. LINDNER

lindnerstudios@yahoo.com
www.acindner.com

A.C. Lindner says she is at her happiest with a brush in hand and a palette full of freshly ground paint. "I love to paint naturalistic subjects, and I try to always paint from life. I paint in oil glazes, which can be time consuming, but the end result is luminous and beautiful when one sees the original painting in person."

Lindner's paintings and commissions are available through Russell Collection Fine Art Gallery in Austin, Texas.

SALLY RUDDY

info@sallyruddy.com
www.sallyruddy.com

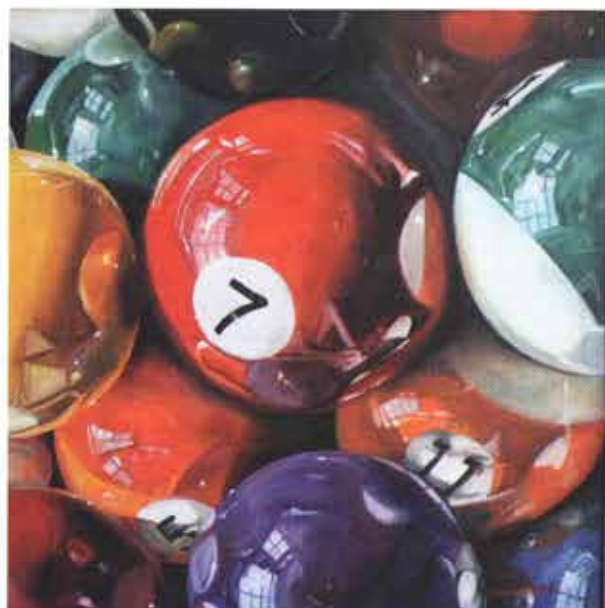
Delicate yet powerful, the expressive, expansive body of work Sally Ruddy creates encapsulates the little joys and treasures of life, reflecting the beauty within.

Every moment is unique and frozen in time for the viewer to experience, with each painting holding its breath and awaiting the next moment that is just out of reach.

"My paintings are a form of poetry," says Ruddy. "You understand the 'words,' but sometimes they are combined in a way that can surprise and delight you."

Ruddy's works contain a mystical character, a flowing energy that allows the viewer to be enveloped by the mosaic colors.

14
Donna R. Biggee, *Solids and Stripes*, oil, 20 x 20"



14

15
George Mamos, *The Cheaters*, oil on canvas board, 24 x 26"



15

16
George Mamos, *Leo's Locomotive*, oil on canvas board, 20 x 24"



Glow, 36x30



Blue Daze, 48x36



Clock Work Orange, 40x30

GEORGE MAMOS

(516) 877-0509
www.georgemamos.com

George Mamos' paintings resonate honesty, integrity and an emotion immediately evident to the viewer. The artist's skillful and technically adept work rejoices in the world of everyday form, memorable feelings and personal relationships.

His paintings usually tell a story that can easily be related to by the collector. Some stories are emotional and some just funny but always true to life. Viewers often look at Mamos' paintings and say, "That painting really reminds me of the moment when I..."

Mamos' still lifes, figuratives and other paintings can be viewed on his website.

DONNA R. BIGGEE

554 W. Main Street, Studio 93,
Buford, GA 30519
dbiggeestudios@bellsouth.net
www.donnabiggeestudios.com

Donna R. Biggee, has gained recognition with her ability to capture light and reflection in vivid landscapes. Biggee



16

is a member of Oil Painters of America, a member of the International Association of

Pastel Societies Master Circle, a Member of Excellence in the Southeastern Pastel Society,

and a member of the American Impressionist Society. ●

angela
nesbit

angelanesbit.com 704-560-1338