

2018 Midyear Meeting Program Updates

# AZA Antelope and Giraffe TAG

Chair, Martha Fischer, [fischer@stlzoo.org](mailto:fischer@stlzoo.org)

**ASSOCIATION  
OF ZOOS  
AQUARIUMS &**

# Forest Woodland Subgroup

Vice Chair, Andi Kornak,

[amk@clevelandmetroparks.com](mailto:amk@clevelandmetroparks.com)



# Common Eland

2018

- 67.120.8 (195) in 23 AZA institutions
- 133.213.18 (364) in North America
- Yellow SSP - Zoo population - Stable
- Least Concern – Wild population - Stable
- Challenges that adversely affect program:
  - Unknown pedigree
  - Response rate for surveys / lack of communication from non-AZA holders
- What TAG can do to help program & improve sustainability?
  - Contact program leader with studbook updates / wants and needs
  - Add to mixed species exhibits!



## Program Leader

- Lou Keeley
- Blank Park Zoo
- llkeeley@blankparkzoo.net
- 515-974-2504

# Eastern giant eland

2018

- 28.41 (69) in 4 NA institutions and 2 Int. institutions.
- No AZA program. International studbook .
- Zoo population ↑
- Vulnerable - wild population ↓
- Challenges that adversely affect program:
  - Importation necessary to improve genetic viability.
  - Nutritional/veterinary issues.
  - Lack of space-more holders needed.
  - Difficult to manage this as an AZA program due to ownership politics. The majority shareholder makes all of the final decisions & recommendations. This is the cause of many institutions leaving the program.
- What can the TAG do to help the program & improve sustainability?
  - Help broker working relationships between participating institutions.



## Program Leader

- Lissa McCaffree
- San Diego Zoo Safari Park
- [lmccaffree@sandiegozoo.org](mailto:lmccaffree@sandiegozoo.org)
- 760-492-4486

# Eastern bongo

(2017)

- 46.84 (130) in 38 institutions
- Yellow SSP – zoo population stable
- Critically Endangered – wild population ↓
  - Information coming out of Kenya estimates less than 100 Eastern bongo in the wild
- Challenges that affect program
  - Need breeding age males
  - Need new holders
- What can TAG do to help program & improve sustainability?
  - Holding institutions identify qualified privates near them that can work with bongo



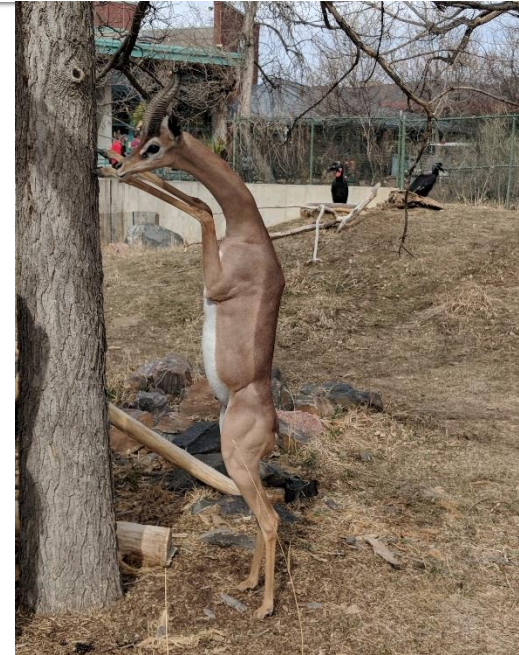
## Program Leader

- Ron Surratt
- Fort Worth Zoo
- [rsurratt@fortworthzoo.org](mailto:rsurratt@fortworthzoo.org)
- 817.759.7160

# Southern Gerenuk

2018

- 22.29(51) in 11 institutions
- Yellow SSP - zoo population, declining
- Near Threatened-wild population ↓
- Challenges that adversely affect program:
  - Loss of holders
  - Non-compliance with recommendation
  - Lack of international imports
- What TAG can do to help program & improve sustainability?
  - Help bring in more genetics
  - Reinforce recommendations



## Program Leaders

- Christina Seely-SSP Coordinator/Studbook
  - Denver Zoo
  - Cseely@DenverZoo.org
  - 720-337-1669
- Manda Butler– Vice Coordinator
  - Cameron Park
  - mandab@ci.waco.tx.us
  - (254) 750-8435

# Greater Kudu

# 2018

- 85.193.4 (282) in 41 institutions
- Yellow SSP - zoo population stable
  - Considering increasing pop. target size
- IUCN status – Least Concern (population stable)
- Challenges that adversely affect program:
  - Low % known genetics in population
  - Lack of sexually mature males
- What TAG or Institutions can do to help program & improve sustainability?
  - Promote studies that focus on developing DNA testing for population planning purposes
  - Continue dialogue with both AZA and non-AZA holders regarding benefits of SSP participation



\*Photo Credit – Cassy Mock, Naples Zoo

- Denny Charlton – SSP Coordinator/Studbook Keeper
  - Smithsonian National Zoo
  - [charltond@si.edu](mailto:charltond@si.edu)
  - 301-278-2069
- Scotty Stainback – SSP Vice-Coordinator
  - Caldwell Zoo
  - [sstainback@caldwellzoo.org](mailto:sstainback@caldwellzoo.org)
  - 718-220-5162

# Lowland Nyala 2018

- 39.112 (151) in 20 Institutions
- Yellow SSP - zoo population ↑
- IUCN Least Concern – wild population stable
- Challenges that adversely affect program:
  - New institutions needed for both bachelor and breeding groups
  - New genetics needed
- What TAG or Institutions can do to help program & improve sustainability?
  - Assist with removing barriers to importation of animals or semen for artificial insemination



## Program Leader

- Steve Metzler
- San Diego Zoo Safari Park
- [smetzler@sandiegozoo.org](mailto:smetzler@sandiegozoo.org)
- 760-473-6993



# Mountain Nyala

2018

- Not managed in zoos
- ISF –*in situ Focus program*
- Endangered –wild population ↓
- Challenges that affect wild population:
  - Habitat destruction/over-grazing
  - Competition with livestock and humans
- What TAG or Institutions can do to help program & improve sustainability?
  - Encourage AZA institutions to support mountain nyala conservation and education programs in Ethiopia



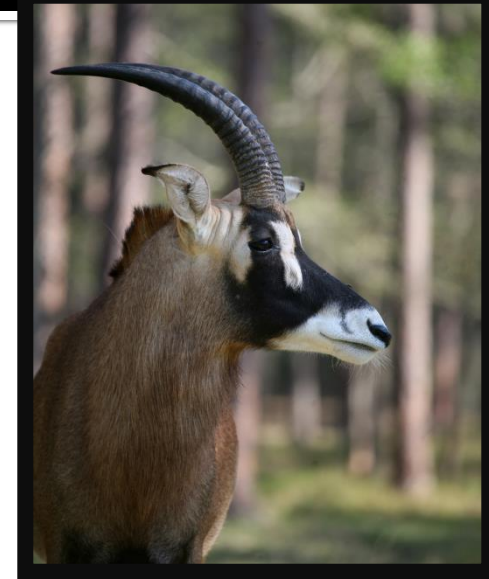
## Program Liaison

- Martha Fischer
- Saint Louis Zoo
- [fischer@stlzoo.org](mailto:fischer@stlzoo.org)
- 314-646-4610

# Roan antelope

2018

- ~140 in 10 institutions
- Yellow SSP - zoo population ↑
- Least Concern – wild population ↓
- Challenges that affect this program:
  - Loss of holding institutions
- What can TAG do to help program & improve sustainability?
  - Conduct a PVA
  - Continue to pursue new holding institutions



## Program leader

- Andi Kornak
- Cleveland Metroparks Zoo
- [amk@clevelandmetroparks.com](mailto:amk@clevelandmetroparks.com)
- 216.635.3373

## Vice Chair

- Scotty Wade
- White Oak Conservation Center
- [scottyw@wocenter.org](mailto:scottyw@wocenter.org)
- 904-225-3357

# Sable Antelope

2018

- 103 animals in 12 institutions
- Yellow SSP - zoo population ↓
- Low Risk-conservation dependent – wild population ↓
- Challenges that affect this program:
  - Lack of space/holders needed
  - New genetics required
  - Development of bachelor herds
- What can the TAG do to help improve the program & sustainability issues?
  - USDA import station to facilitate imports



## Program Leader

- Jill Piltz
- Disney's Animal Kingdom
- [Jill.M.Piltz@Disney.com](mailto:Jill.M.Piltz@Disney.com)
- 407-938-2850

# Sitatunga

2018

- 34.58 (92) in 8 AZA institutions and 2 non-AZA institutions
- **Yellow Program** - zoo population ↑
- **Least Concern** – wild population ↓
- Challenges that adversely affect program:
  - New institutions needed for bachelor or breeding groups
  - New genetics needed
- What TAG can do to help program & improve sustainability?
  - Work with US regulators allowing imports from international collections.



## Program Leader

- Gil Myers
- Smithsonian National Zoo
- myersg@si.edu
- 202-633-4189

# Lesser Kudu

2018

- 60.66.2 (128) in 19 institutions
- Yellow SSP - zoo population : stable
- IUCN Near threatened – wild population ↓
- Challenges that adversely affect program:
  - Some aging bachelor herds are experiencing incompatibility. Finding placements for these individuals can be challenging.
  - New genetics needed.
- What the TAG can do to help program & improve sustainability?
  - Encourage holders to report births to the SSP coordinator and see if the animal is needed in the population before placement.
  - Import new founders from Europe.
  - Help coordinate an action plan for members of bachelor herds that need to be disbanded.



## Program Leader

- Lily Moore
- Saint Louis Zoo
- [Imoore@stlzoo.org](mailto:Imoore@stlzoo.org)
- 314-646-4824

# South African Springbok

2018

- 23.56.0 (79) at 9 Institutions
- Yellow SSP - zoo population, stable
- Least Concern – wild population
- Challenges that adversely affect program:
  - More bachelor and breeding herds are becoming available.
  - Need new holding institutions.
- What TAG can do to help program & improve sustainability?
  - Encourage institutions to consider Springbok in their current or future exhibits as space becomes available.
  - Reminder to institutions: please keep transfers within AZA institutions so population can meet target size n=100.



## Program Leader

- Jessica Scallan
- Tulsa Zoo
- [jscallan@tulsazoo.org](mailto:jscallan@tulsazoo.org)
- 918-669-6601

# Small Antelope Subgroup

Vice Chair, Steve Metzler,

[smetzler@sandiegozoo.org](mailto:smetzler@sandiegozoo.org)



# Black Duiker

2018

- 13.8 (21) in 6 AZA institutions & 1 non-AZA
- Red SSP - zoo population
- Least Concern– wild population ↓
- Challenges that affect program:
  - Lack of reproducing females
  - Extremely small genetic foundation
  - Need additional institutions to hold single males.
- What can TAG do to help program & improve sustainability?
  - Importation of additional animals is unlikely . A 2018 Breeding and Transfer plan will focus on moving and switching males to hopefully get non-reproducing females to breed.



## Program Leader

- Josh Sisk
- Los Angeles Zoo
- Josh.Sisk@lacity.org
- 323-644-4220



# Blue duiker

2018

- 30.23 (53) in 17 institutions
- **Red Program- zoo population ↓**
- Least Concern – wild population stable
- Challenges that affect program:
  - Need additional institutions
  - Importation needed. Institutions willing to put forth the effort/cost to import are needed.
  - Increase breeding population
- What can TAG do to help program & improve sustainability?
  - Encourage AZA institutions to work with this program. Blue duikers are super adorable, cute, and would make a great addition to your collection plan. They can even be exhibited with other animals.



## Program Leader

- Sarah Ksiazek
- **Dallas Zoo**
- [alphadawg7@gmail.com](mailto:alphadawg7@gmail.com)
- 469.554.7235

# Guenther's dik-dik

2018

- Institutions 1.0 at 1 institutions
- Red Program- zoo population ↓
- IUCN Least Concern – wild population stable
- Challenges that adversely affect program:
  - No females
  - No animals in private sector
- What TAG or Institutions can do to help program & improve sustainability?
  - Assist with the ability to import from Africa



**Program Leader-** Paige McNickle

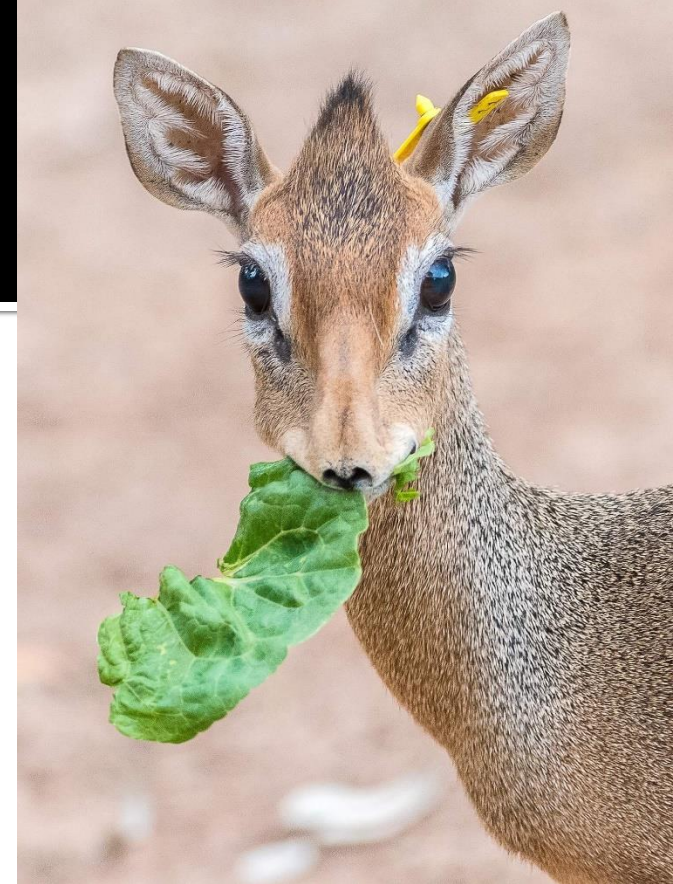
- Phoenix Zoo
- [pmcnickle@phoenixzoo.org](mailto:pmcnickle@phoenixzoo.org)
- 602-451-8364

**Vice Coordinator-** Lisa Fitzgerald

- Dallas Zoo
- [Lisa.Fitzgerald@dallaszoo.com](mailto:Lisa.Fitzgerald@dallaszoo.com)
- 469-554-7217

# Kirk's dik-dik 2018

- Institutions 16.16 at 17 institutions
- **Red Program- zoo population ↓**
- IUCN Least Concern – wild population stable
- Challenges that adversely affect program:
  - Small population size
  - Poor genetics
  - Fractious nature of species.  
Recommending institutions hand rear when possible
- What TAG or Institutions can do to help program & improve sustainability?
  - Assist with trying to import from Europe
  - Place solo animals in breeding situations
  - Hand Rear calves to ↓ flight response in adults and increase neonate survival



## Program Leader - Paige McNickle

- Phoenix Zoo
- [pmcnickle@phoenixzoo.org](mailto:pmcnickle@phoenixzoo.org)
- 602-451-8364

## Vice Coordinator - Lisa Fitzgerald

- Dallas Zoo
- [Lisa.Fitzgerald@dallaszoo.com](mailto:Lisa.Fitzgerald@dallaszoo.com)
- 469-554-7217

# Klipspringer

2018

- 24.20.1 (45) in 18 institutions
- **Red Program- Zoo Population ↑**
- Least Concern-wild population stable
- Challenges that adversely affect program:
  - Small population size.
  - Lack of new institutional interest.
  - It is extremely important for this population, both genetically and demographically, that the population be grown to the target population size. All females capable of producing offspring be bred.
- What TAG can do to help program & improve sustainability?
  - Assist with marketing of this species to increase zoo spaces to grow program.



## Program Leader

- Michael Lebanik
- Disney's Animal Kingdom
- Michael.G.Lebanik@disney.com
- (407) 721-9280

# Red-flanked Duiker

2018

- 10.14 (24) in 10 institutions
- Red Program- zoo population ↓
- Least Concern – wild population ↓
- Challenges that adversely affect program:
  - Lack of new institutional holders
  - New genetics needed
- What TAG can do to help program & improve sustainability?
  - Possible importation in the near future
  - Assist with marketing of this species to increase zoo spaces to grow program



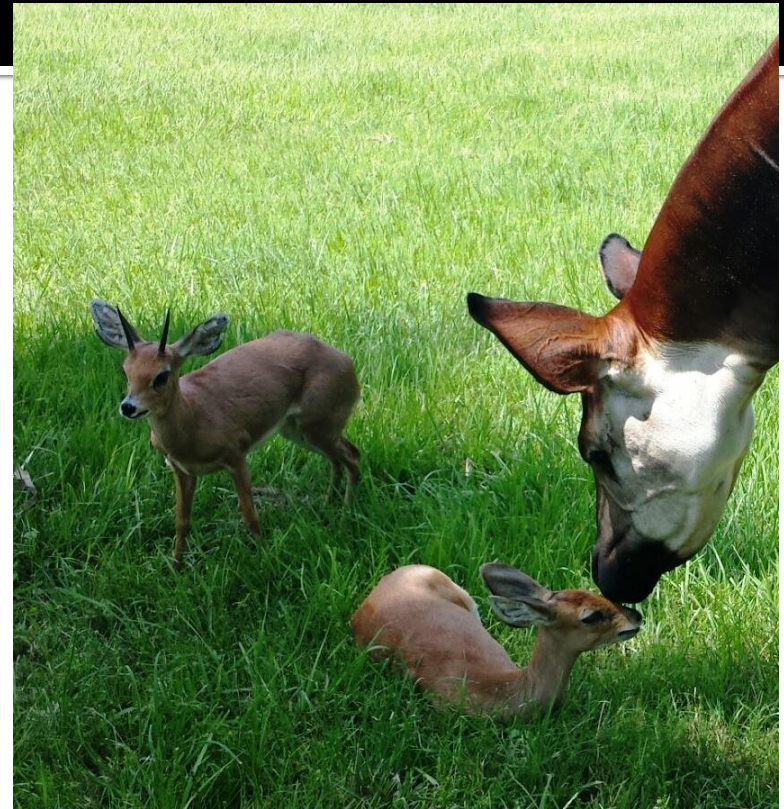
## Program Leader

- Nate Oliveira
- Saint Louis Zoo
- [oliveira@stlzoo.org](mailto:oliveira@stlzoo.org)
- 314-646-4546

# Steenbok

2018

- 10.14.2 (26) in 5 Institutions
- Red Candidate Program- zoo population ↑
- IUCN Least Concern – wild population stable
- Challenges that adversely affect program:
  - Small population size
  - Lack of new institutional interest
  - Fractious nature of species. Recommending institutions hand rear when possible
- What TAG or Institutions can do to help program & improve sustainability?
  - Assist with marketing of this species to increase zoo spaces to grow program



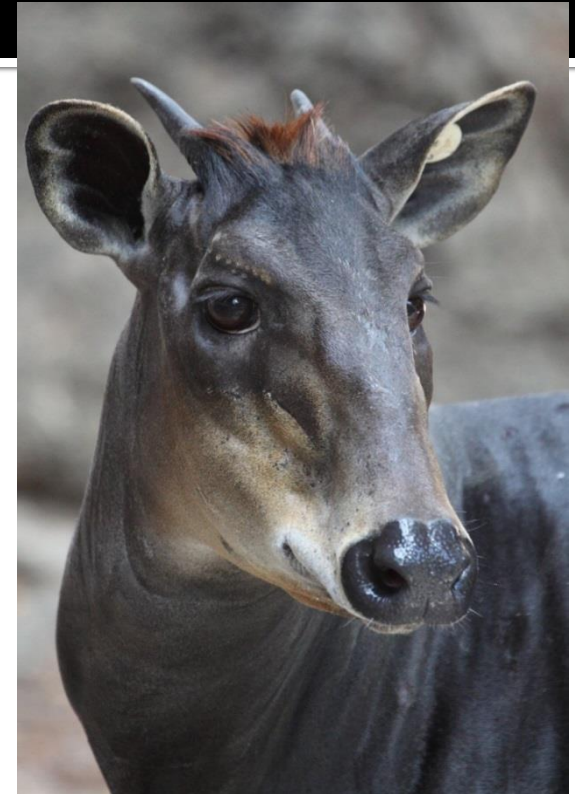
## Program Leader

- Steve Metzler
- San Diego Zoo Safari Park
- [smetzler@sandiegozoo.org](mailto:smetzler@sandiegozoo.org)
- 760-473-6993

# Yellow-backed Duiker

2018

- 49.49 (98) in 35 Institutions
- Yellow SSP - zoo population ↑
- IUCN Near Threatened –wild population ↓
- Challenges that affect program:
  - New institutions needed to breed and hold non-breeding
  - New genetics needed
- What TAG or Institutions can do to help program & improve sustainability?
  - Encourage institutions to work with species, incl. in multi-species habitats
  - Facilitate exports



## Program Leader

- Linda Rohr Bachers
- Milwaukee County Zoo
- [Linda.bachers@milwaukeecountywi.gov](mailto:Linda.bachers@milwaukeecountywi.gov)
- (414) 256-5448

# Waterbuck Subgroup

Vice Chair, Randy Rieches, [rrieches@sandiegozoo.org](mailto:rrieches@sandiegozoo.org)

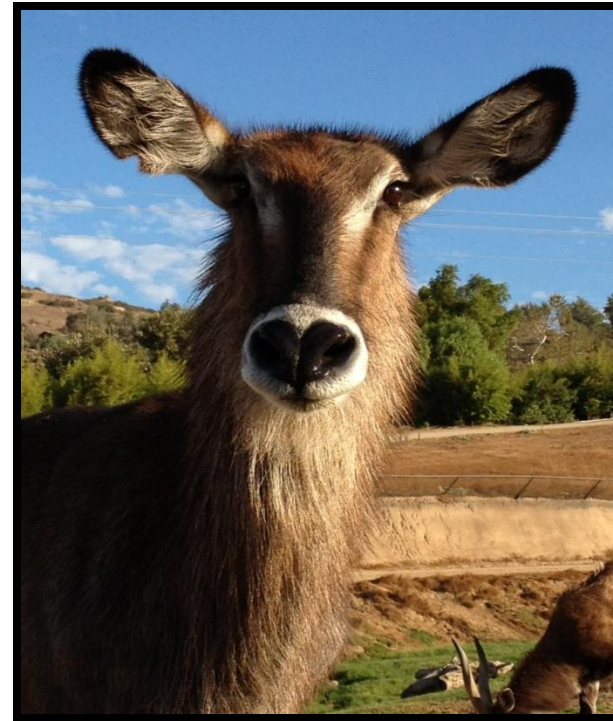




# Common Waterbuck

# 2018

- 107.136.16 (259) in 15 institutions
- Yellow SSP - zoo population, stable
- Least Concern – wild population ↓
- Challenges that adversely affect program:
  - New program priorities and data integration based on the first round of molecular data (SNPs generated by RADseq) analysis in February 2018.
  - Facilities phasing out breeding groups in favor of other species or single sex herds.
  - Male management needs: rotations through herds, holding for surplus, and holding multiple males.
- What TAG can do to help program & improve sustainability?
  - Develop opportunities for multiple males to rotate within herds to enhance genetic diversity
  - Support an increase of known pedigree within current population by collecting and submitting ear notch and blood samples, when requested.



## Program Leader

- Jonnie Capiro-SSP & Studbook
- San Diego Zoo Safari Park
- [jcapiro@sandiegozoo.org](mailto:jcapiro@sandiegozoo.org)
- (760) 738-5501

# Nile Lechwe

2018

- 97.113.22 (232) in 10 Institutions
- Yellow SSP - zoo population ↑
- IUCN Endangered– wild population decreasing
- Current B&T from April 2017
  
- Challenges that adversely affect program:
  - New institutions needed for bachelor groups (lost two institutions in last year)
  - New genetics needed
  
- What TAG or Institutions can do to help program & improve sustainability?
  - Promote species for mixed-species exhibits
  - Explore potential importation/new genetics
  - Institutions should work with SSP to ensure breeding recommendations are carried out



## Program Leader

- Mike Murray
- Lincoln Park Zoo
- [mmurray@lpzoo.org](mailto:mmurray@lpzoo.org)
- 312-742-2374

# Red Lechwe

2018

- 9.22 in 3 AZA institutions
- **Candidate Program**
- Least concern – wild population stable
- Challenges that affect program:
  - Need new holders to grow the population.
- What can TAG do to help program & improve sustainability?
  - Need to identify new holders to take animals in from private breeders
  - Focus on hand-rearing females to calm herds. Hand-reared individuals are manageable in traditional zoo settings.



## Program Leader

- Mel Hall
- Disney's Animal Kingdom
- (402) 490-9487
- melissa.a.hall@disney.com

# Uganda Kob

2018

- 6.12 (18) in 1 institution
- 5.9.2 (16) in 1 private institution
- Unknown number at 1 private institution
- Red Program - Studbook published 2015
- Breeding/ transfer plan completed 2018
- Least concern – wild population stable
- Challenges that affect program:
  - Small zoo population is not sustainable
  - Lack of institutional interest
- What can TAG do to help program & improve sustainability?
  - Need new zoo holders to bring in animals from private breeders to build a sustainable population



## Program leader

- Danny Lepping
- Disney's Animal Kingdom
- Daniel.J.Lepping@disney.com

# Mountain reedbuck

2018

- Not managed in zoos
- **ISF – *in situ* Focus program**
- Least Concern – wild population stable (pop. 36,000)
- Challenges that affect wild population:
  - Over hunting
  - Habitat destruction/over-grazing
  - Competition with livestock & humans
- What can TAG do to help program & improve sustainability?
  - Encourage better species monitoring in home ranges



## Program Liaison

- Randy G. Rieches
- San Diego Zoo Safari Park
- [rrieches@sandiegozoo.org](mailto:rrieches@sandiegozoo.org)
- 760-738-5015

# Hartebeest Subgroup

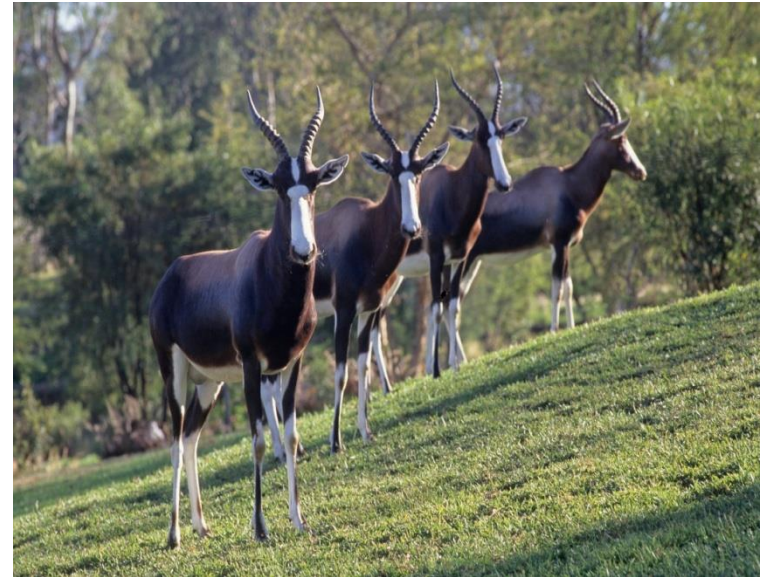
Vice Chair, Dan Beetem, [dbeetem@thewilds.org](mailto:dbeetem@thewilds.org)



# Bontebok

# 2018

- 26.36.12 (74) in 18 institutions
- Yellow SSP - zoo population ↑
- Vulnerable-wild population stable
- Challenges that adversely affect program:
  - Large number of animals on a private ranch excluded due to unknown genetics
  - New genetics needed
  - Not all of the females in the population are in a breeding situation
- What TAG can do to help program & improve sustainability?
  - USDA import station to facilitate imports
  - Encourage all facilities holding females to breed or hold males instead



## Program Leader

- Lissa McCaffree
- San Diego Zoo Safari Park
- [lmccaffree@sandiegozoo.org](mailto:lmccaffree@sandiegozoo.org)
- 760-492-4486

# Jackson's hartebeest

2018

- 3.4.0 (7) in 2 institutions
- Red Program - zoo population is declining fast
- Least Concern – wild population ↓
- Challenges that affect program:
  - Currently not many individuals, populations continues to decline.
  - New genetics needed
  - Carrier of MCF virus
- What can TAG do to help program & improve sustainability?
  - We need breeding females



## Program Leader

- Mollye Nardi
- Great Plains Zoo
- [mnardi@gpzoo.org](mailto:mnardi@gpzoo.org)
- 605.367.8313



# Wildebeest

2018

- 73.119.38 in 22 institutions
- Yellow SSP - zoo population stable
- Least Concern- Some isolated populations are declining
- Challenges that adversely affect program:
  - Due to older females not breeding, population is losing genetic diversity in population.
  - New genetic diversity will be needed in the future
- What TAG can do to help program & improve sustainability?
  - Continue to support genetic testing



## Program Leader

- Kristen Wolfe
- Disney's Animal Kingdom
- [Kristen.Wolfe@disney.com](mailto:Kristen.Wolfe@disney.com)
- 407.938.2377

# Hirola

# 2018

- Not managed in zoos
- ISF – *in situ* Focus program
- Critically endangered – wild population ↓  
(fewer than 500 animals in the wild)
- Challenges that affect wild population:
  - Predation
  - Habitat destruction/over-grazing
  - Competition with livestock & humans
- What can TAG do to help program & improve sustainability?
  - Encourage AZA institutions to support *in situ* conservation through:
    - NRT Hirola Recovery Project - population in the predator-proof sanctuary has grown from 48 to 129 animals (<http://www.nrt-kenya.org/ishaqbini>)
    - Hirola Conservation Programme ([www.hirolaconservation.org](http://www.hirolaconservation.org))



## Program Liaison

- Martha Fischer
- Saint Louis Zoo
- [fischer@stlzoo.org](mailto:fischer@stlzoo.org)
- 314.646.4610

# Aridland Antelope, Gazelle & Pronghorn Subgroup

Vice Chair, Adam Eyres, [adame@fossilrim.org](mailto:adame@fossilrim.org)



- 78.152 (230) in 24 AZA institutions
- Yellow SSP - zoo population ↑
- Endangered – wild population ↓ ↓ ↓
- Challenges that affect program:
  - Lack of space - more holders needed to sustain population
  - Gene diversity limited & pedigrees incomplete
- What can TAG do to help program & improve sustainability?
  - Provide samples for San Diego Global genetic survey (Jamie Ivy)
  - support field conservation of this species through Sahara Conservation Fund

([www.saharaconservation.org](http://www.saharaconservation.org))



## Program Leader

- Bill Houston
- Saint Louis Zoo
- [houston@stlzoo.org](mailto:houston@stlzoo.org)
- 314-646-4826

# Addra Gazelle

2018

- 83.100 (183) in 18 AZA and 3 non-AZA institutions
- Yellow SSP – stable
- Critically Endangered
- Challenges that adversely affect program:
  - Lack of space – especially for males
  - Unrelated animals need to be identified
- What TAG can do to help program & improve sustainability?
  - Encourage institutions to work with this high priority species



## Program Leader

- Tim Thier
- Saint Louis Zoo
- [tthier@stlzoo.org](mailto:tthier@stlzoo.org)
- 314.646.4647

# Arabian Oryx

2018

- 27.73 (100) in 6 AZA & 2 non-AZA institutions
- Yellow SSP - zoo population growing
- Vulnerable – wild population stable
- Challenges that affect this program:
  - Lack of space/holders limits population to <110 animals
  - Surplus males (do not house well in bachelor groups)
  - **Losing extra male holding space soon!**
- What can the TAG do to help improve the program & sustainability issues?
  - Need more holders, especially for males.
  - Need current holders to increase male holding.



## Program leader

- Michelle Hatwood
- Audubon Species Survival Center
- [mhatwood@auduboninstitute.org](mailto:mhatwood@auduboninstitute.org)
- 504.398.3153

# Cuvier's Gazelle

2018

- 1.2 (3) in 2 AZA institutions and ~9.26 (~35) in Non-AZA institutions
- Red SSP - zoo population ↓
- Vulnerable – wild population ↓
  
- Challenges that adversely affect program:
  - Lack of space – more holders needed
  - ♀/♀ aggression has been noted in some collections
  - Inaccurate #'s from private non-AZA institutions
  
- What can the TAG do to help improve the program & sustainability issues?
  - More institutions/holder space
  - Need to import new founder genetic material



## Program Leader

- Wendy Enright
- The Living Desert
- [Wenright@Livingdesert.org](mailto:Wenright@Livingdesert.org)
- (760)346-5694 Ext. 2211

# Fringe-eared oryx

2018

- 9.30 (39) animals in 4 institutions
- Red SSP - zoo population ↑
- Vulnerable – wild population ↓
  
- Challenges that affect this program:
  - Lack of space – more holders needed
  - New genetics required
  - Need to increase the population size
  
- What can the TAG do to help the program and improve sustainability?
  - Facilitate import for increased genetic diversity



Program leader

- Lissa McCaffree
- San Diego Zoo Safari Park
- [lmccaffree@sandiegozoo.org](mailto:lmccaffree@sandiegozoo.org)
- (760) 492-4486



# Gemsbok

2018

- 34.66.2 (102) in 10 institutions
- Yellow SSP - zoo population ↑
- Least Concern – wild population ↑
- Challenges that affect this program:
  - Lack of space - more holders needed
  - Lack of known pedigree and individual ID's
  - Need for rotating breeding males at each institution
- What can the TAG do to help the program and improve sustainability?
  - Facilitate import (poss. White Sands) to increase genetic diversity



## Program Leader

- Lissa McCaffree
- San Diego Zoo Safari Park
- [lmccaffree@sandiegozoo.org](mailto:lmccaffree@sandiegozoo.org)
- (760) 492-4486

# Grant's gazelle

(2017)

- 18.39 (57) in 12 institutions
- Yellow SSP - zoo population stable
- Least Concern – wild population ↓
- Challenges that affect program:
  - Lack of available animals
  - Unknown pedigrees
- What can TAG do to help program & improve sustainability?
  - Help develop a plan to deal with the large amount of UNK data in this population
  - Help program meet zoos' demands for animals



## Program Leader

- Christy Poelker
- Saint Louis Zoo
- poelker@stlzoo.org
- 314.646.4651

# Pronghorn

2018

- *A. a. americana* x.x (x) in x institutions
- *A. a. peninsularis* – 12.10 (22) in 5 institutions
- Both - Red Program (pending 1st studbook) - zoo population status UNK
- *A. a. americana* – least concern – wild population stable
- *A. a. peninsularis* - vulnerable – wild population ↓ (below 50 animals)
- Challenges that affect program:
  - Currently – no studbook (new program, studbook in progress)
  - Need to decrease/stabilize *americana* and increase *peninsularis*
  - Can be susceptible to Epizootic Hemorrhagic Disease (EHD)
- What can TAG do to help program & improve sustainability?
  - Promote species to find new holders
  - Encourage participation in Peninsular Pronghorn Recovery Program



## Program Leader

- Melodi Tayles
- San Diego Zoo Safari Park
- [mtayles@sandiegozoo.org](mailto:mtayles@sandiegozoo.org)
- 760.738.5026

# Peninsular Pronghorn

2018

- 25.19 (44) in 7 institutions
- Red SSP
- Endangered – wild population ↑
- Challenges that adversely affect program:
  - Small captive population in need of imports
  - Loss of animals to Epizootic Haemorrhagic Disease and Blue Tongue
- What TAG can do to help program & improve sustainability?
  - Support for EHD and BT vaccine
  - Support for Peninsular Pronghorn Recovery Project in Baja Ca Sur



## Program Leader

- Melodi Tayles-SSP / Studbook
- San Diego Zoo Safari Park
- [mtayles@sandiegozoo.org](mailto:mtayles@sandiegozoo.org)
- (760) 855-1911

# Red-fronted gazelle

2018

- 18.23 (41) in 1 AZA institution & 1 non-AZA
- Candidate Program
- Vulnerable – wild population ↓
- Challenges that affect program:
  - Need more holders
  - Extremely small genetic foundation
- What can TAG do to help program & improve sustainability?
  - Encourage holders to designate space for this program
  - Support field conservation through Sahara Conservation Fund



Program Leader

- Charlie Hyde
- San Diego Zoo Safari Park
- [chyd@sandiegozoo.org](mailto:chyd@sandiegozoo.org)
- 619-212-9173

# Scimitar-horned Oryx

# 2018

## ■ Globally

- 640.890.51 (1581) animals in 155 of institutions
- 253 births
- 178 deaths
- 34 transfers
  
- SSP
  - 83.159.0 (242) animals in 18 institutions
  
- EEP
  - 261.386.3 (650) animals in 63 institutions
  - 317 in Middle East outside of effective management
  - 114.281.1 (333) in managed EEP population



## Program Leaders

- RoxAnna Breitigan- SSP
  - The Living Desert
  - [rbreitigan@livingdesert.org](mailto:rbreitigan@livingdesert.org)
  - 760-346-4898
- Tania Gilbert- Studbook
  - Marwell Wildlife
  - [taniag@marwell.org.uk](mailto:taniag@marwell.org.uk)
  - +44 (0) 1962 777934

# Scimitar horned oryx 2018 cont.

## ■ Yellow SSP - zoo population

- 242 animals in 18 institutions
- Breeding and Transfer Plan complete.
- Recommended 70 females to breed and 9 SSP transfers.
- If you need to place animals out of SSP, please contact coordinator, regarding those transfers.

## IUCN: Extinct in the wild

- However, if Chad re-introduction is successful & oryx are re-established, reproduce and survive, status could be downgraded to Critically Endangered in the future

## ■ Challenges that adversely affect program:

- Maturing males are difficult to manage in a group
- Valuable males being castrated or moved out of SSP/EEP managed programs

What TAG or Institutions can do to help program & improve sustainability?

- Help with solution for extra males
- Need holders willing to hold bachelor groups or single males
- Participate in the Collection and Shipment of Reproductive tracts. Contact Budhan Pukazhenth, Smithsonian Conservation Biology Institute within 24 hours of death of animal. Protocol in Breeding & Transfer Plan document.

# Soemmering's Gazelle 2018

- 27.31(58) in 5 AZA institutions & 3 non-AZA
- Red SSP - zoo population ↑
- Vulnerable – wild population ↓
- Challenges that affect program:
  - Lack of space - more holders needed
  - Genetics/high infant mortality
- What can TAG do to help program & improve sustainability?
  - Support genetic studies to improve breeding success
  - Need to import new founders/or founder genetic material



## Program Leader

- Nicole Becker
- Saint Louis Zoo
- [becker@stlzoo.org](mailto:becker@stlzoo.org)
- 937-307-4759



# Speke's gazelle 2018

- 24.37 (61) in 8 AZA institutions
- Yellow SSP - zoo population ↑
- Endangered – wild population ↓
- Challenges that affect program:
  - Lack of space - more holders needed, especially single species for breeding
  - New genetics needed
- What can TAG do to help program & improve sustainability?
  - Develop import station so Speke's gazelles could be imported from Al Ain Zoo in UAE



## Program Leader

- Christy Poelker
- Saint Louis Zoo
- [poelker@stlzoo.org](mailto:poelker@stlzoo.org)
- 314.646.4651

# Slender-horned gazelle 2018

- 39.46 (85) in 10 AZA institutions & 1 non-AZA
- Yellow SSP - zoo population ↓
- Endangered – wild population ↓
- Challenges that affect program:
  - Lack of space - more holders needed
  - Extremely small genetic foundation – import needed
- What can TAG do to help program & improve sustainability?
  - Develop import station so Slender-horned gazelles could potentially be imported from Tunisia
  - Encourage support of field conservation of this species through Sahara Conservation Fund



## Program Leader

- Brigid Randle
- The Living Desert
- [brandle@livingdesrt.org](mailto:brandle@livingdesrt.org)
- 760-346-5694 Ext. 2200

# Saiga 2018

- Not managed in zoos
- ISF – *in situ* Focus program
- **Critically Endangered – wild population ↓**
- Challenges that affect wild population:
  - Poaching for horns and meat
  - Competition with livestock & humans
  - Habitat destruction/over-grazing
- What can TAG do to help program & improve sustainability?
  - Encourage AZA institutions to support saiga conservation projects in Russia and Central Asia



## Program Liaison

- Dan Beetem
- The Wilds
- [dbeetem@thewilds.org](mailto:dbeetem@thewilds.org)
- 740.638.5030 ext 2110

# Thomson's gazelle

2018

- 67.140 (207) in 20 institutions
- Yellow SSP - zoo population stable
- Near threatened – wild population ↓
- Challenges that affect program:
  - Males need to be removed from breeding herds before 1 year of age.
- What can TAG do to help program & improve sustainability?
  - Encourage institutions to hold small bachelor groups



Program Leader

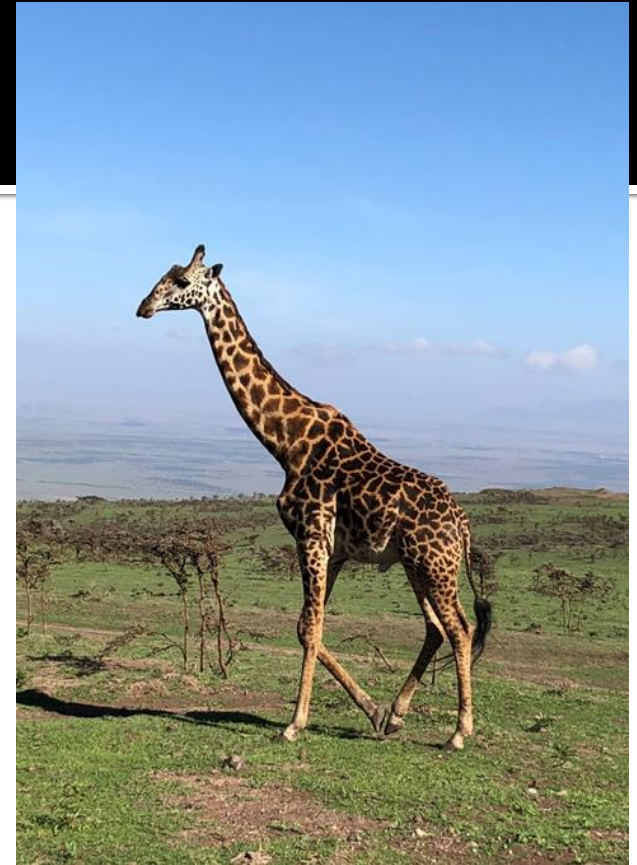
- Matt Gelvin
- San Diego Zoo Safari Park
- [mgelvin@sandiegozoo.org](mailto:mgelvin@sandiegozoo.org)
- 760-622-5026

# Giraffe/Okapi Subgroup



# Masai giraffe 2018

- 52.71 (123) in 32 AZA institutions
- Yellow SSP - zoo population slightly ↑
- Vulnerable– wild population ↓
- Challenges that affect this program:
  - Pop. remains below RCP target of 150 animals
  - Need to increase genetic representation of underrepresented founders
  - Create breeding pairs with low and well-matched mean kinships where possible
- What can TAG do to help program & improve sustainability?
  - Encourage zoos to shift focus from Generic to Masai
  - Encourage training for voluntary blood draws & TB tests



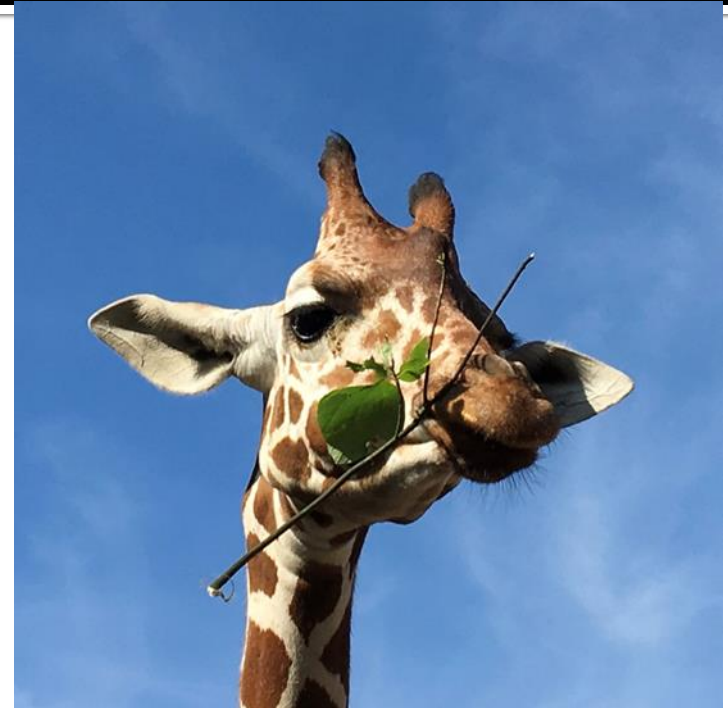
## Program Leader

- Sheri Horiszny
- Oregon Zoo
- [sheri@oregonzoo.org](mailto:sheri@oregonzoo.org)
- 503-220-2444

# Generic giraffe

2018

- 191.251 (431) in 81 institutions
- Green SSP - zoo population stable
- Vulnerable – wild population ↓
- Challenges that affect this program:
  - Pop. remains over RCP target of 400 animals
  - Working to reduce # of unknown pedigree individuals
  - Need to establish breeding pairs with low and well-matched kinships
- What can TAG do to help program & improve sustainability?
  - Encourage zoos to consider shifting focus to Masai
  - Encourage compliance with B&T recs
  - Encourage training for voluntary blood draws & TB tests



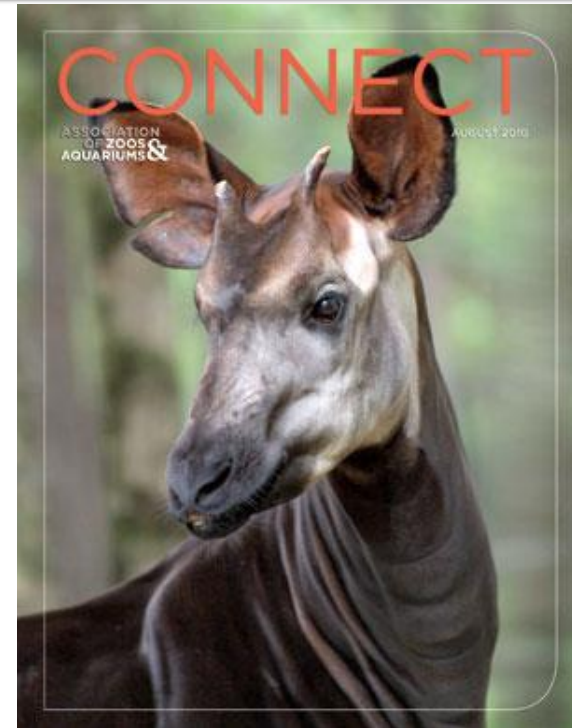
## Program Leader

- Sheri Horiszny
- Oregon Zoo
- [sheri@oregonzoo.org](mailto:sheri@oregonzoo.org)
- 503-220-2444

# Okapi

2018

- 121 (61.57.3) in 34 institutions
- Yellow SSP - zoo population : increasing
- IUCN Endangered – wild population ↓
- Challenges that adversely affect program:
  - International holders and international animal movement
  - Not enough females available currently to support institutions interested in breeding
- What the TAG can do to help program & improve sustainability?
  - Encourage new holders to help with bachelor and male holding
  - Encourage all holders to support the Okapi Wildlife Reserve/Okapi Conservation Project



## Program Leader

- Steve Shurter
- White Oak Conservation
- [sshurter@white-oak.org](mailto:sshurter@white-oak.org)



2018 Midyear Meeting Program Updates

# AZA Buffalo, Bison and Cattle TAG

Chair, Lisa Smith, [lsmith@gpzoo.org](mailto:lsmith@gpzoo.org)

**ASSOCIATION  
OF ZOOS  
AQUARIUMS &**

# African Savannah Buffalo 2018

- 33.47.0 (80) in 6 institutions with 1 new institution being added in 2018!
- **Yellow SSP** - zoo population ↑
- **Least Concern** – wild population ↓
- Challenges that adversely affect program:
  - Need for more holding institutions
  - Need to improve genetic diversity
- What TAG or Institutions can do to help program & improve sustainability?
  - New holding institutions
  - Include this weather hearty species in collection planning



Photo: Jordan Baur, Denver Zoo

## Program Leader

- Jordan Schimming
- Denver Zoo
- [jschimming@denverzoo.org](mailto:jschimming@denverzoo.org)
- (720) 337-1614

# Anoa

2018

- 4.6.0 in 7 AZA institutions
- ~170 in 3 private institutions
- **Yellow SSP - AZA zoo population ↓**  
(overall, pop in NA ↑)
- **Endangered – wild population ↓**
- Challenges that affect program:
  - Lack of space - more holders needed!
- What can TAG do to help program & improve sustainability?
  - Encourage AZA institutions to step up and commit to conserving anoa and other wild cattle through participation in the SSP



## Program Leader

- Telena Welsh
- Point Defiance Zoo and Aquarium
- [Telena.Welsh@pdza.org](mailto:Telena.Welsh@pdza.org)
- (253) 404-3684

2018 Midyear Meeting Program Updates

# AZA Caprinae TAG

Chair, Gil Myers, MyersG@si.edu

**ASSOCIATION  
OF ZOOS &  
AQUARIUMS**

# Chinese Goral

2018

- 11.16 (27) in 7 AZA institution and 2 non-AZA institution.
- Red Program - zoo population ↓
- Vulnerable – wild population ↓
- Challenges that adversely affect program:
  - Breeding success declining
  - Demographics
  - New genetics needed
- What TAG can do to help program & improve sustainability?
  - Work with US regulators allowing imports from collections in Asia, Europe or the wild.



## Program Leader

- Gil Myers
- Smithsonian National Zoo
- myersg@si.edu
- 202-633-4189

# Desert Bighorn Sheep

2018

- 30.48 (78) in 7 institutions
- **YELLOW** program
- Wild population stable
- Challenges that adversely affect program:
  - Lack of space
  - New genetics needed
- What TAG can do to help program & improve sustainability?
  - More holders needed
  - Consider replacing *Ovis canadensis canadensis* with *O.c.nelsoni*



## Program Leader

- Maureen McCarty
- The Living Desert
- Palm Desert, CA
- [mmccarty@livingdesert.org](mailto:mmccarty@livingdesert.org)
- 760-346-5694 x2620

# Nubian ibex

2018

- 28.24 (52) in 6 AZA institutions and 1 future SPA institution
- Yellow SSP
- Endangered – wild population ↓
- Challenges that adversely affect program:
  - Lack of space - more holders needed
    - Working with SPA to gain more private holders
  - New genetics needed
- What TAG can do to help program & improve sustainability?
  - Work with Non-USA Population Managers to import new genetics
  - Work with SPA to gain more holders.



## Program Leader

- Alison Mott
- Sacramento Zoo
- [amott@saczoo.org](mailto:amott@saczoo.org)
- 916-808-8559

# Kordofan Aoudad

2018

- 61 (31.29.1) in 6 AZA institutions
- Yellow SSP
  - Will be dropping to a Red SSP if unable to find new holding facilities
- IUCN-Vulnerable
- Challenges that adversely affect program:
  - Very poor genetics and survivability
  - Lack of space. Need facilities with nominate form to switch to Kordofan aoudad as holding or breeding facilities.
    - Only 2 breeding facilities
    - Possibly losing 2 of 4 holding facilities in the next year.
- Need to decide if we should continue to manage at sub-species level or move to species level management.



## Program Leader

- Molly Shea
- [mollys@fossilrim.org](mailto:mollys@fossilrim.org)
- 254-898-4209



# Sichuan Takin

2018

- 78.74.2 (154) in 9 AZA institutions & 9 non-AZA
- Yellow SSP - zoo population ↑
- Vulnerable – wild population ↓
- Challenges that affect program:
  - Lack of space - more holders needed
  - High unknownness in population
- What can TAG do to help program & improve sustainability?
  - Work with SSP to investigate road blocks to exportation to Canada
  - Work with SSP to investigate paternity testing to eliminate unknown sires



Program Leader

- Dave Bernier
- Lincoln Park Zoo
- [dbernier@lpzoo.org](mailto:dbernier@lpzoo.org)
- 312-742-0539

# Trans-Caspian Urial

2018

- 21.44 (65) in 4 AZA institutions and 2 non-AZA institutions.
- **Yellow SSP**, - Zoo Population Stable.
- **IUCN Vulnerable** – wild population decreasing
- Challenges that adversely affect program:
  - Lack of space – more holders needed
  - Genetics – improve genetic health
- What TAG or Institutions can do to help program & improve sustainability?
  - Promote species to increase zoo spaces to grow program



## Program Leader

- Jon Rolfs
- San Diego Zoo Safari Park
- [jrolfs@sandiegozoo.org](mailto:jrolfs@sandiegozoo.org)
- 321-439-5484

# Turkmenian Markhor

2018

- 52.70.1 (123) in 12 institutions
- Yellow SSP - zoo population, stable
- Near threatened – wild population, stable
- Challenges that adversely affect program:
  - Lack of space
  - Compliance with SSP recommendations
- What TAG can do to help program & improve sustainability?
  - Encourage institutional cooperation
  - Support for conservation projects in home range countries



## Program Leader

- Seth Groesbeck
- Rosamond Gifford Zoo
- [sethgroesbeck@ongov.net](mailto:sethgroesbeck@ongov.net)
- 315-435-8511 Ext. 121

# Armenian Mouflon

2018

- 5.14.0 (19) in 3 institutions
- Candidate program - zoo population ↓
- **Vulnerable – wild population ↓**
- Challenges that adversely affect program:
  - New genetics needed
  - Non-cooperation from facilities
  
- What TAG can do to help program & improve sustainability?
  - Encourage institutional cooperation
  - New source of animals



Program Leader

- Seth Groesbeck
- Rosamond Gifford Zoo
- [sethgroesbeck@ongov.net](mailto:sethgroesbeck@ongov.net)
- 315-435-8511 Ext. 121

2018 Midyear Meeting Program Updates

# AZA Cervid TAG

Chair, Michelle Hatwood,  
[mhatwood@auduboninstitute.org](mailto:mhatwood@auduboninstitute.org)

**ASSOCIATION  
OF ZOOS &  
AQUARIUMS**

# Bactrian wapiti

2018

- 18.36.9 (63) in 2 institutions
- Red candidate program
- Least concern – wild population ↑
  - IUCN reclassified under Tarim Red Deer (*Cervus hanglu*)
- Challenges that adversely affect program:
  - Not a charismatic species
  - Hard species to manage in smaller exhibits
- What TAG can do to help program & improve sustainability?
  - Encourage institutional cooperation
  - Encourage import of future genetic diversity



## Program Leader

- Curt Coleman
- the Wilds
- ccoleman@thewilds.org
- 740-638-5030



# Barasingha

2018

- 23.30 (53) in 4 AZA institutions & 1 non-AZA
- Yellow SSP - zoo population ↓
- Vulnerable – wild population ↓
- Challenges that affect program:
  - Lack of space - more holders needed
  - CWD restrictions between states
- What can TAG do to help program & improve sustainability?
  - Seek out new holders
  - Improve understanding between zoos about CWD regulations
- News from the field!
  - Barasingha are the new mascot for Kanha National Park, and are the state animal of Madya Pradesh
  - Translocations have occurred between multiple National Parks in India and Pakistan.



## Program Leader

- Matt Gelvin
- San Diego Zoo Safari Park
- [mgelvin@sandiegozoo.org](mailto:mgelvin@sandiegozoo.org)
- 760-622-5026

# Barbary stag

2018

- 0.34 (34) in 1 institution
- Candidate Program - zoo population ↓
- Least Concern (species level)
  - *Barbarus* ssp. Declining rapidly in Africa
- Challenges that affect this program:
  - Lack of space / holders needed
- What can TAG do to help program & improve sustainability?
  - More institutions needed to sustain this species
  - Male animals need to be acquired from other sources





# Calamian deer

2018

- 5.1 (6) in 2 institutions
- Red Program – zoo population ↓
- Endangered – wild population ↓
- Challenges that affect this program:
  - Low reproductive success
  - Captive population declining fast due to health issue that mostly affects female animals
  - New genetics required
- What can TAG do to help program & improve sustainability?
  - USDA import station to facilitate imports
- This species is no longer viable in AZA zoos as it stands, due to the lack of animals. Zoos are encouraged to support in situ work, as this species is disappearing quickly from its native habitat.

## Program leader

- Robin Noll
- Los Angeles Zoo
- [Robin.noll@lacity.org](mailto:Robin.noll@lacity.org)
- 323.644.4125



# Chilean Pudu

2018

- 22.22 (44) in 14 institutions
  - 7 births in 2017
- Red SSP -zoo population↓
- CITES I, IUCN Vulnerable –wild population ↓
- Challenges that adversely affect program:
  - Infant mortality has increased
  - New male founders needed
  - Revisit European imports
  - Encourage multi-species exhibits with pudu
- What TAG can do to help program & improve sustainability?
  - Develop collaborative in country pudu rehabilitation program with Chile or EAZA



- Program Leader
  - Craig Gibbs
  - Queens Zoo
  - cgibbs@wcs.org
  - 718-271-3042

# Eld's Deer

2018

- 25.43 (68) in 4 institutions
- Yellow SSP - zoo population stable
- Endangered – wild population ↓
- Challenges that adversely affect program:
  - Lack of space/holders needed
  - CWD concerns restricting movement of deer between facilities
  - New genetics needed
- What TAG can do to help program & improve sustainability?
  - More holders or space is needed to breed and maintain GD



## Program Leader

- Dolores Reed-SSP and Studbook keeper
- Smithsonian Conservation Biology Institute
- reeddm@si.edu
- 540-635-6524

# Malayan Chevrotain

2018

- 14.20.1 (35) at 10 Institutions
- Red SSP- zoo population ↑
- Least concern - wild population ↓
  
- Challenges that adversely affect program:
  - New genetics required
  - Breeding facilities that can hold offspring
  
- What TAG can do to help program & improve sustainability?
  - USDA import station to facilitate imports to increase genetic diversity



## Program Leader

- Hulya Khambatta
- Wildlife Conservation Society- Bronx Zoo
- hkhambatta@wcs.org
- 718-741-1752

# Moose

2018

- 14.33 (47) at 12 institutions
- Red SSP -zoo population ↑
- Stable wild population but falling in Minnesota
- Challenges that adversely affect program:
  - CWD prohibits many zoos from accepting wild orphans
  - Husbandry has improved but more work is needed
- What TAG can do to help program & improve sustainability?
  - Coordinate captive breeding efforts to meet CWD restrictions in all states
  - Provide advice on husbandry challenges



## Program Leader

- Tony Fisher
- Minnesota Zoo
- Tony.fisher@state.mn.us
- 952-431-9275
- 2017 Studbook update in progress

# Pere David's deer

# 2018

- 53.72.1 (126) at 15 Institutions
- Yellow SSP - zoo population, stable
- Classified (EW) extinct in the wild, but small free ranging populations have become established.
- Challenges that adversely affect program:
  - Need more breeding groups in current holding facilities.
- What TAG can do to help program & improve sustainability?
  - Encourage more institutions to house/breed this species.



## Program Leaders

- Beth Schille – Studbook/SSP
- Disney's Animal Kingdom
- [beth.schille@disney.com](mailto:beth.schille@disney.com)
- 407-938-3201

# Mexican Red Brocket Deer 2018

- 6.5 (11) in 3 AZA & 2 non-AZA
- Red SSP -zoo population ↓
- Wild population decreasing ↓
- Challenges that affect this program:
  - Recent loss of valuable animals
  - Most females are in non-AZA
- What can the TAG do to help improve the program & sustainability issues?
  - Need a Zoo to champion this species by importing animals from Mexico
  - There is interest in this species, but no available animals in the US



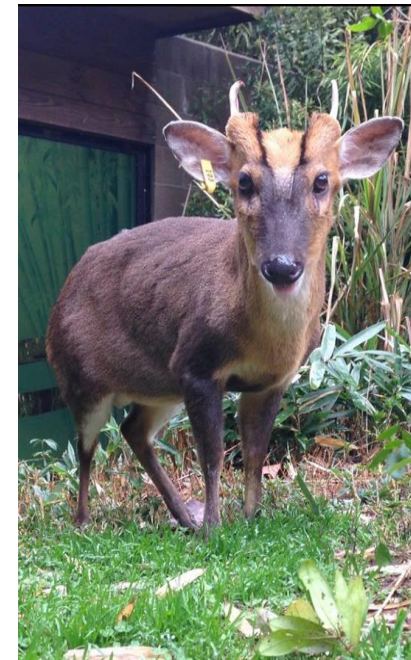
## Program leader

- Meg Tedeschi
- Bergen County Zoo
- 201.634.3118
- megtedeschi@yahoo.com

# Reeves' muntjac

2018

- 77.77.7 (161) in 51 institutions (as of 2014)
- **Candidate Program -zoo population stable**
- **Least Concern- population stable**
  
- Challenges that adversely affect program:
  - No historical population management
  - First studbook to be published in April 2018
    - (It's a hot mess!)
  
- What TAG can do to help program & improve sustainability?
  - Encourage institutions to reach out to Program Leader for breeding recommendations until population genetics can be determined to minimize potential inbreeding.



## Program Leader

- Jen Webb
- Zoo Atlanta
- [jwebb@zooatlanta.org](mailto:jwebb@zooatlanta.org)
- 404.754.8943



# Siberian Musk Deer

2018

- 9.4 (13) in 4 institutions (soon to be 5)
- **Candidate Program** - ~stable
- **Vulnerable** - ↓ declining in wild
- Challenges that adversely affect program:
  - High infant mortality
  - Not enough holders
  - Can only be housed in northern latitude zoos
- What TAG can do to help program & improve sustainability?
  - Continue to work on international imports
  - Continue marketing campaign
  - Identify stewardship opportunities



©Brent Huffman, [www.ultimateungulate.com](http://www.ultimateungulate.com)

## Program Leader

- Matt Ardaiolo
- Denver Zoo
- [mardaiolo@denverzoo.org](mailto:mardaiolo@denverzoo.org)
- (720) 337 - 1669

# Tufted Deer

2018

- 34.22 (56) in 16 institutions
- **Yellow SSP -zoo population ↓**
- Near Threatened –wild population ↓
- Challenges that affect this program:
  - Extra males
  - New genetics may be needed in the future
- What can the TAG do to help improve the program & sustainability issues?
  - USDA import station to facilitate imports



## Program leader

- Steve Castillo
- Disney Animal Kingdom
- [Steve.castillo@disney.com](mailto:Steve.castillo@disney.com)
- 407-938-2335

# White-lipped Deer

2018

- 8.15 (23) animals in 2 institutions
- Red SSP-zoo population ↓
- Vulnerable –wild population ?
  - May be increasing?
- Challenges that affect this program:
  - Development of bachelor herds
  - CWD issues impacting movement of larger cervids more than smaller species
- What can the TAG do to help improve the program & sustainability issues?
  - Increase interest and space
  - Coordinate captive breeding efforts to meet CWD restrictions in all states



## Program leader

- Steve Castillo
- Disney Animal Kingdom
- Steve.castillo@disney.com
- 407-938-2335

2018 Midyear Meeting Program Updates

# AZA Equid TAG

Chair, Tim Thier, [tthier@stlzoo.org](mailto:tthier@stlzoo.org)

**ASSOCIATION  
OF ZOOS &  
AQUARIUMS**

# Persian Onager

2018

- 9.26 (35) in 3 institutions
- Red SSP – zoo population stable
- Endangered – wild population stable
- Challenges that adversely affect program:
  - Lack of space - more holders needed
  - Genetics- new genetics needed; semen being imported from EAZA
- What TAG can do to help program & improve sustainability?
  - Consider managing onagers descended from Iranian imports and kulan of Turkmen descent as a single population of Asiatic Wild Asses thus tapping into a larger gene pool.



## Program Leader

- Kate Volz
- Smithsonian National Zoo
- [volzk@si.edu](mailto:volzk@si.edu)
- 202.633.3675

# Hartmann's Mountain Zebra

2018

- 19.46 (65) in 16 institutions
- Yellow SSP – zoo population ↑
- Vulnerable – wild population ↓
- Challenges that adversely affect program:
  - Currently not enough surplus animals to meet increased demand
  - Greater genetic diversity is needed
- What TAG can do to help program & improve sustainability?
  - Continue to influence institutions to utilize facilities to house Mt. Zebra over more common Plains zebra



## Program Leader

- Tommy Jordan
- Disney's Animal Kingdom
- [Thomas.t.jordan@disney.com](mailto:Thomas.t.jordan@disney.com)
- 407.427.6058

# Grevy's Zebra

2018

- 62.111.1 (174) at 38 institutions
- Green Program - zoo population ↑
- Endangered– wild population stable
- Challenges that adversely affect program:
  - Due to space constraints it is important to identify additional holding institutions.
    - Male holding space is an SSP priority. Zoos with breeding herds need to be able to house male offspring for 2-4 years. Facilities for separating stallions should include outdoor access.
- What TAG can do to help program & improve sustainability?
  - **TAG Recommendation:** Zoos with common (plains) zebras in single-species exhibits are urged to replace them with Grevy's zebras.



## SSP Coordinator

- Martha Fischer
- Saint Louis Zoo
- [fischer@stlzoo.org](mailto:fischer@stlzoo.org)
- 314-646-4610

## NA Studbook Keeper

- Katie Pilgram-Kloppe
- Saint Louis Zoo
- [pilgram@stlzoo.org](mailto:pilgram@stlzoo.org)
- 314-646-4875

# Asian Wild Horse

2018

- 60.72 (130) in 21 institutions
- Yellow SSP - zoo population, stable
- Endangered – wild population ↑
- Challenges that adversely affect program:
  - Compliance with SSP recommendations
  - Zoos reluctant to hold bachelor groups
- What TAG can do to help program & improve sustainability?
  - Encourage institutional cooperation with SSP plans
  - Support conservation efforts in Mongolia

<http://support.mnzoo.org/truewildhorse/>



## Program Leaders

- Tony Fisher-SSP
  - Minnesota Zoo
  - [tony.fisher@state.mn.us](mailto:tony.fisher@state.mn.us)
  - 952-431-9275
- Amanda Faliano – Studbook
  - Denver Zoo
  - [Afaliano@denverzoo.org](mailto:Afaliano@denverzoo.org)
  - 720-337-1531



# Somali Wild Ass

2018

- 28.40 (68) in 10 institutions
- Yellow SSP - zoo population ↑
- Critically Endangered – wild population ↓
- Challenges that affect program:
  - Lack of space - more holders needed
  - Institutions need to be prepared to hold offspring in reserve for this program for at least 2 years (and sometimes longer)
- What can TAG do to help program & improve sustainability?
  - Encourage holding institutions to hold bachelor males



Program Leader

- Tim Thier
- Saint Louis Zoo
- [tthier@stlzoo.org](mailto:tthier@stlzoo.org)
- 314.646.4647

# Plains Zebra

2018

- 87.197.2 (286) in 70 institutions
- Yellow SSP - zoo population stable
- Near Threatened– wild population stable
- Challenges that affect program:
  - Lack of intact males
  - Genetics – new genetics needed
- What can TAG do to help program & improve sustainability?
  - Keep viable males intact for breeding recommendations



## Program Leader

- John Register
- Houston Zoo
- [jregister@houstonzoo.org](mailto:jregister@houstonzoo.org)
- 713.533.6682

2018 Midyear Meeting Program Updates

# AZA Wild Pig, Peccary and Hippo

## TAG Chair,

Martin Ramirez, [martin.ramirez@zoo.org](mailto:martin.ramirez@zoo.org)

**ASSOCIATION  
OF ZOOS &  
AQUARIUMS**

# Babirusa

2018

- 30.31 animals in 20\* institutions
  - \* will likely change this year.
- Yellow SSP - zoo population stable
- Endangered – wild population decreasing due to illegal hunting and habitat loss.
- This is the highest the AZA population has been since they were imported in the 1980's
- Births outpacing deaths
- GSMP program working with Action Indonesia. All holders encouraged to support the program.
- Will be planning with PMC this year.



## Program Leader

- Joe Forys
- Audubon Zoo
- [jforys@auduboninstitute.org](mailto:jforys@auduboninstitute.org)

# Chacoan peccary

2018

- 45.51.6 (102) at 19 zoos
- Yellow SSP - zoo population ↑
- Endangered - wild population ↓
- Challenges that affect this program:  
Additional funding sources needed  
as are qualified participants
- What can TAG do to help program & improve sustainability?
  - Encourage institutions to ship out collared peccaries and replace them with Chacoan peccaries as well as to provide annual financial support.



Brent Huffman

## Program Leader

- Jim Haigwood
- [Jim.haigwood@lacity.org](mailto:Jim.haigwood@lacity.org)
- (818) 472-1702

# Common Warthog

2018

- 62.76.4 (142) @ 41 institutions
- Yellow SSP – zoo population stable with births/deaths; decreasing overall due to exports out of population
- IUCN status – Least Concern, stable
- Studbook last published in June 2017.
- **Challenges that adversely affect program:**
  - Inbreeding – lack of unrelated adult animals
  - Some institutions not following breeding/transfer/holding recommendations.
  - Too many exports out of population due to lack of space
  - Loss of space due to institutions changing collection plans
- **What Institutions can do to help program & improve sustainability?**
  - Import new known genetics!
  - Increase holding capacity when building new or renovating exhibits/holding areas.
  - Investigate mixed habitat options with this species!



## Program Leader

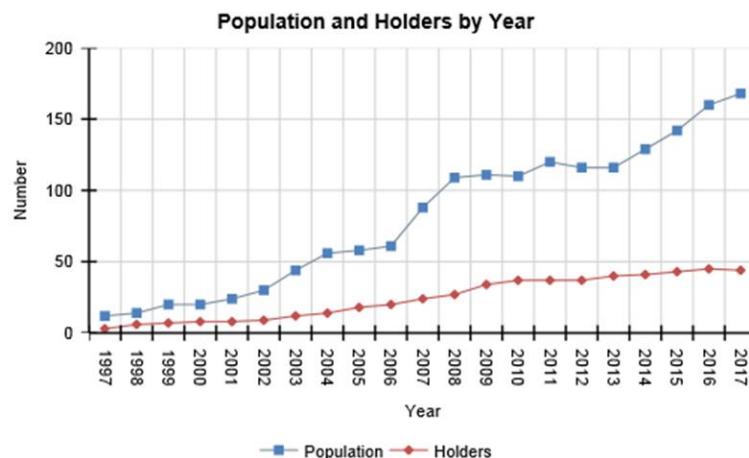
- Lisa Smith
- Great Plains Zoo
- lsmith@gpzoo.org
- (605)367-8313 ext. 119

- **ANIMALS AVAILABLE:  
New holders needed!**

# Red river hog

# 2018

- 116.128 (244)
  - 165 in 47 AZA institutions
  - 79 in 10 non-AZA institutions
- Yellow SSP - zoo population ↑
- Least Concern - wild population ↓
- Red river hogs are taking up valuable space for the more endangered pig and peccary species (Babirusa, Visayan warty pig and Chacoan Peccary)



## Program Leaders

- Matt James  
Zoo Miami  
matt.james@miamidade.gov  
(305) 251-0400 ext. 5084943
- Peter Burvenich – Studbook  
Miller Park Zoo  
pburvenich@cityblm.org

# Pygmy Hippopotamus

2018

- 32.59.6(97) in 18 institutions
  - 12 AZA institutions
  - 6 Non-AZA partner institutions
- Red SSP - zoo population slowly ↑
- Endangered – wild population ↓
- Challenges that adversely affect program:
  - Female-biased sex ratio
  - List of 9 pending new institutions with varied new exhibit timelines over the next 3 to 5 years
  - Becoming increasingly difficult to place animals in Non-AZA institutions due to individual institutional policies



## Program Leader

- Christie Eddie – Red SSP Coordinator and Studbook Keeper
- Omaha's Henry Doorly Zoo and Aquarium
- christie@omahazoo.com
- 402-557-6932



# River hippopotamus

2018

- 29.51 (80) at 31 institutions
- Yellow SSP - zoo population stable
- Vulnerable - wild population ↓
- Challenges that affect this program:
  - Many institutions hold only female pairs, which limits the number of potential breeding pairs and can make males difficult to place .
  - Current exhibit spaces limit opportunities for successful introductions, breeding and managing male offspring.
- What can TAG do to help program & improve sustainability?
  - Maintain current population size with 3-4 births/year.
  - Consider forming and breeding new pairs within existing spaces.
  - New breeding facilities should be capable of holding at least two adult females per adult male and allow for separation of adult males from females and their offspring.



## Program Leader

- John Davis
- Riverbanks Zoo
- Jdavis@riverbanks.org
- 803.602-0886

# Visayan warty pig

2018

- 36.39 (75) in 18 institutions (15 AZA, 3 non-AZA)
- Yellow SSP - zoo population stable
- Critically Endangered - wild population ↓
- Last Population Plan January 15, 2016
- Last Studbook December 1, 2017
- Challenges that affect this program:
  - Potential that females are shutting down following relatively short periods of being in non-reproductive situations, though a female at Portland delivered successfully after not being pregnant for ~ 8 years
  - Have had some aggression issues in single sex groups
- What can TAG do to help program & improve sustainability?
  - Looking for more holders
- San Diego Zoo has mixed them with Malayan tapir



Jacksonville Zoo and Gardens

- Craig Miller – SSP Coordinator, [millercc@jaxzoo.org](mailto:millercc@jaxzoo.org), (904) 757-4463 x136
- Stephanie DeYoung – Studbook Keeper, [stephanie@elephants.com](mailto:stephanie@elephants.com), (325) 518-6141

2018 Midyear Meeting Program Updates

# AZA Tapir TAG

Chair, Michele Stancer

[mstancer@hoglezoo.org](mailto:mstancer@hoglezoo.org)

**ASSOCIATION  
OF ZOOS &  
AQUARIUMS**

# Asian (Malayan) Tapir

# 2018

- 15.20 (35) in 18 AZA institutions
  - 6.3 (9) CCTU
  - 1.1 (?) Canada
- Red SSP - zoo population ↑
- Endangered – wild population ↓
- Challenges that adversely affect program:
  - New founder animals needed
  - Additional spaces needed
- What TAG can do to help program & improve sustainability?
  - Encourage institutions to add this species
  - Support education materials
    - "What is a tapir"



Program Leader/Studbook Keeper

- Michele Stancer
- Utah's Hogle Zoo
- [mstancer@hoglezoo.org](mailto:mstancer@hoglezoo.org)
- 801-584-4544

# Baird's Tapir

2018

- 19.15 AZA- 14 facilities
- 3.2 non AZA -3 facilities
- Yellow SSP- zoo population ↑
- Endangered – wild population ↓
- Working towards managing as a bi-regional program including populations in Mexico and Central America
- Challenges that adversely affect program:
  - New founder animals needed
  - Additional spaces needed



Program Leader/ International  
Studbook Keeper

- Carolina Holguin
- Africam Safari
- [cholguin@africamsafari.com](mailto:cholguin@africamsafari.com)
- +52(222) 281-7000 x 234