



Chaco Center for Conservation and Research – Taguá Project
Juan Manuel Campos Krauer DVM, PhD.



Paraguay



Source: Naturhistoriska riksmuseet www.nrm.se

The Gran Chaco Region

The Gran Chaco is a vast plain of about 1.3 million square kilometers (501.969 square miles) extending over parts of Argentina, Bolivia, Paraguay.

The Bolivian and Paraguayan Chaco have remained mostly unoccupied until recently. (Redford et al 1990)

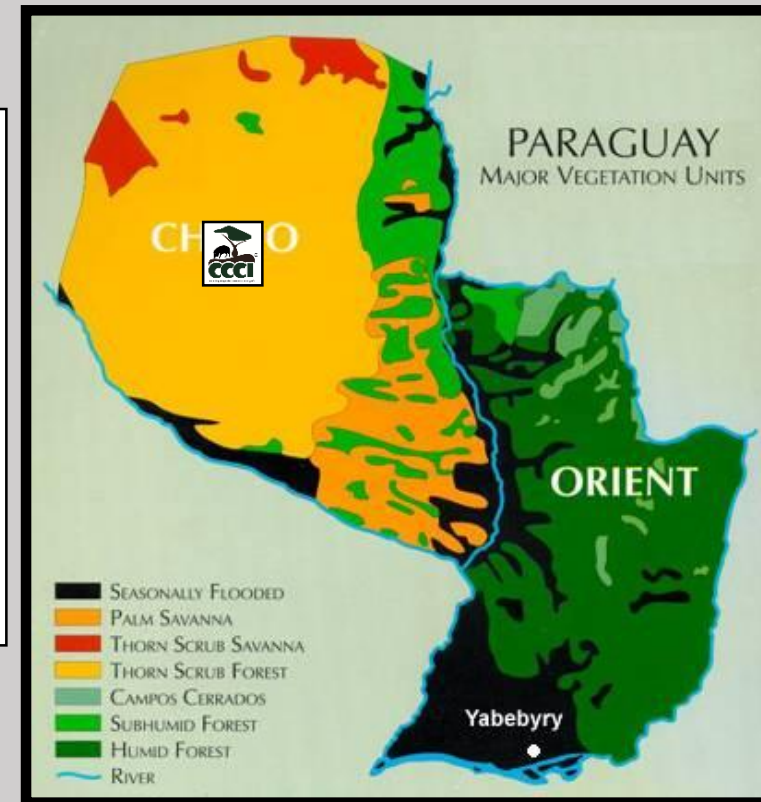
The Chaco is divided in two. The Low Chaco and the Dry Chaco.



The Paraguayan Chaco

The Paraguayan Chaco has an approximate area of 250,000 km² and accounts for 20% of the Gran Chaco.

It represents 60% of the northwest region of the Paraguayan territory and inhabited only by 2.5% of the total population, approximately 150,000 inhabitants.



Source: Naturhistoriska riksmuseet www.nrm.se

Chaco Center for Conservation and Research – Taguá Project



- The only In-situ conservation program for the Chacoan peccary
- More than 30 years of experience
- Extremely efficient and probably one of the less expensive captive breeding programs in the world
- Enormous success national (Paraguay) and internationally (TV programs)



42°C



11/09/2016

09:21AM

CON018

Objectives of the CCCI

*Captive breeding, study, population management,
reintroduction, education and extension.*

*112 Chacoan peccaries
22 Collar peccaries
10 White-lipped peccaries*



ASSOCIATION
OF ZOOS &
AQUARIUMS



Species holding report for: *Catagonus wagneri*

21 Institutions in 2 regions. Europe 4 Institutions. North America 17 institutions

Total animals: 114

In Florida: Sanford / Central Florida Zoological Park (4 Animals).

The Peccaries

Family Tayassuidae

Catagonus wagneri (Rusconi 1930)
Chacoan peccary



Endangered

Tayassu pecari (Fisher 1814)
White-lipped peccary

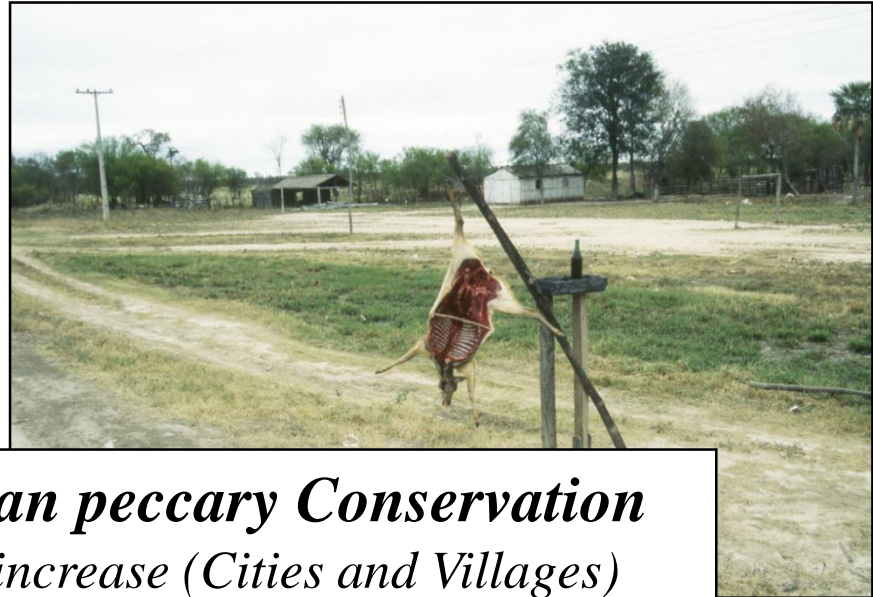


Vulnerable

Pecari tajacu (Linnaeus 1758)
Collard peccary

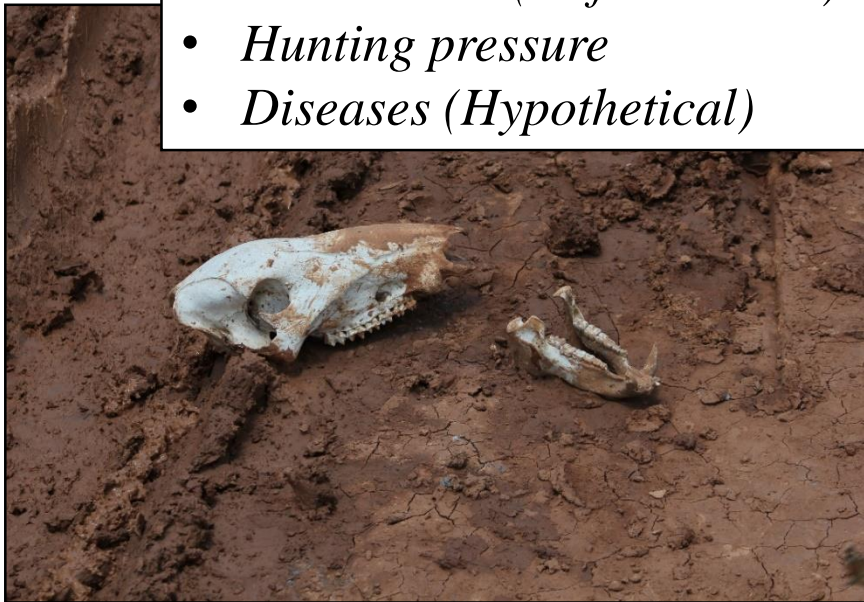


Least Concern



Factors Affecting Chacoan peccary Conservation

- *Development and population increase (Cities and Villages)*
- *Habitat loss (Deforestation)*
- *Hunting pressure*
- *Diseases (Hypothetical)*



Factors Affecting Chacoan peccary Conservation

- *Habitat loss (Deforestation)*



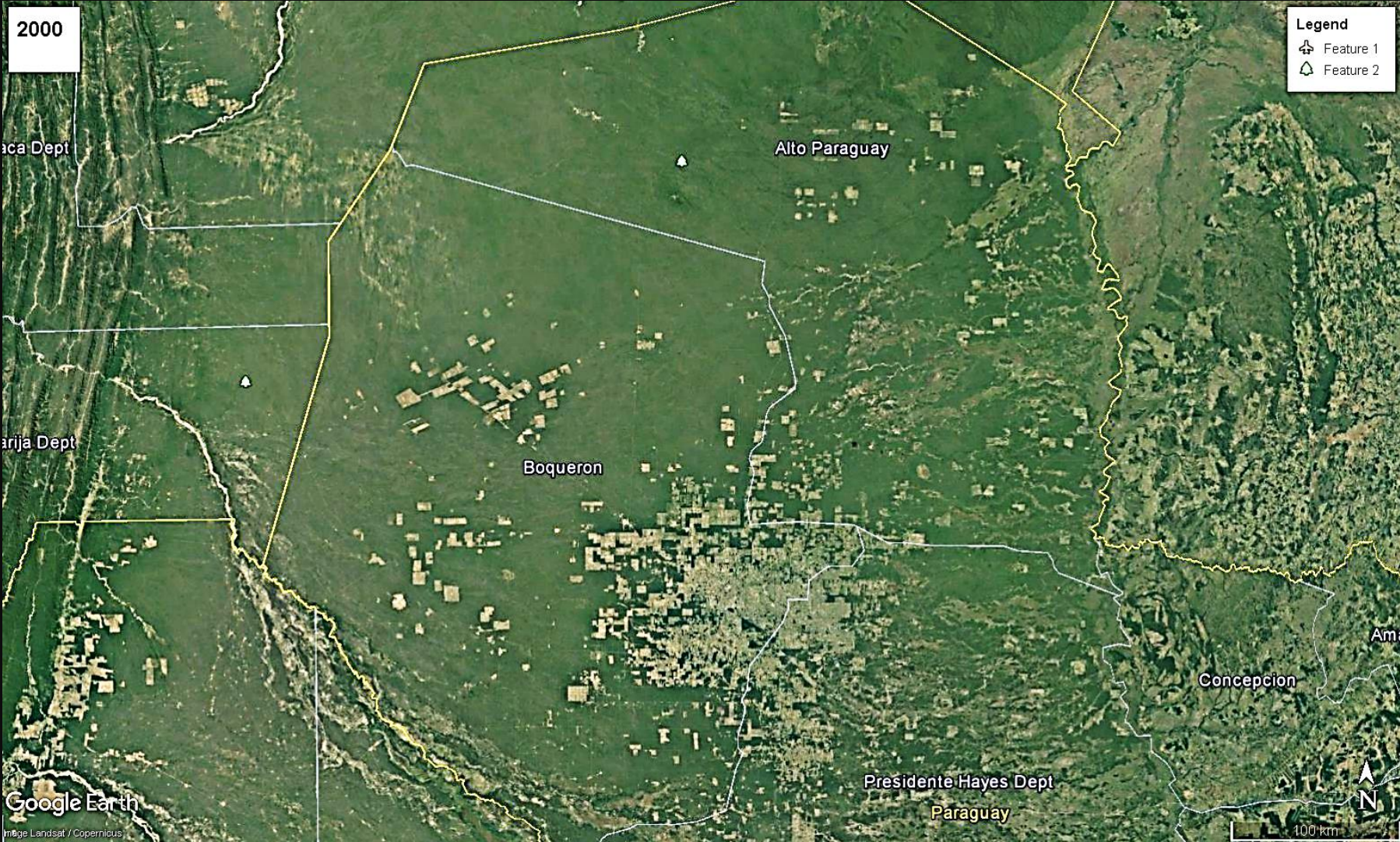
Levels of deforestation in the Chaco are among the highest in the world.

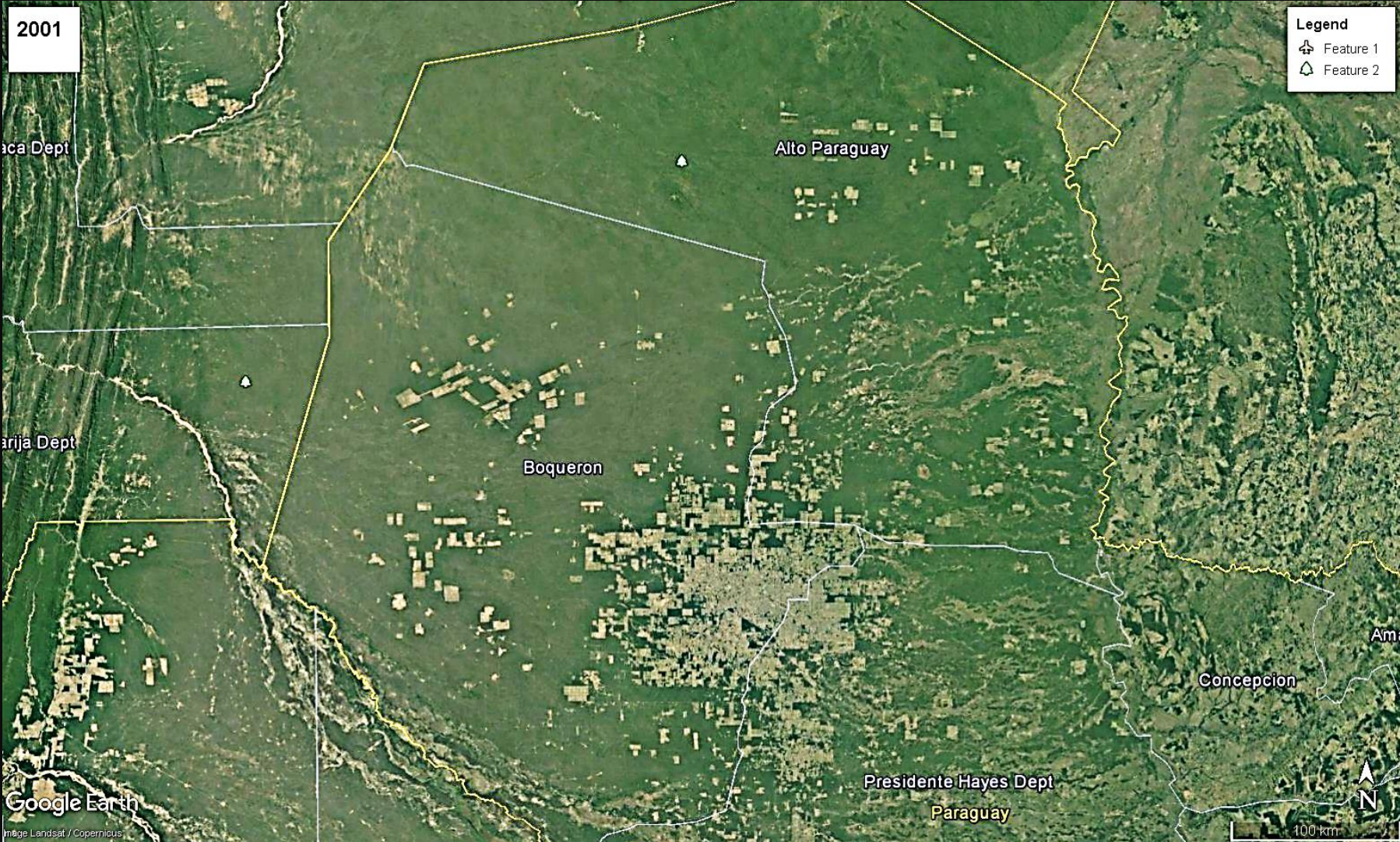


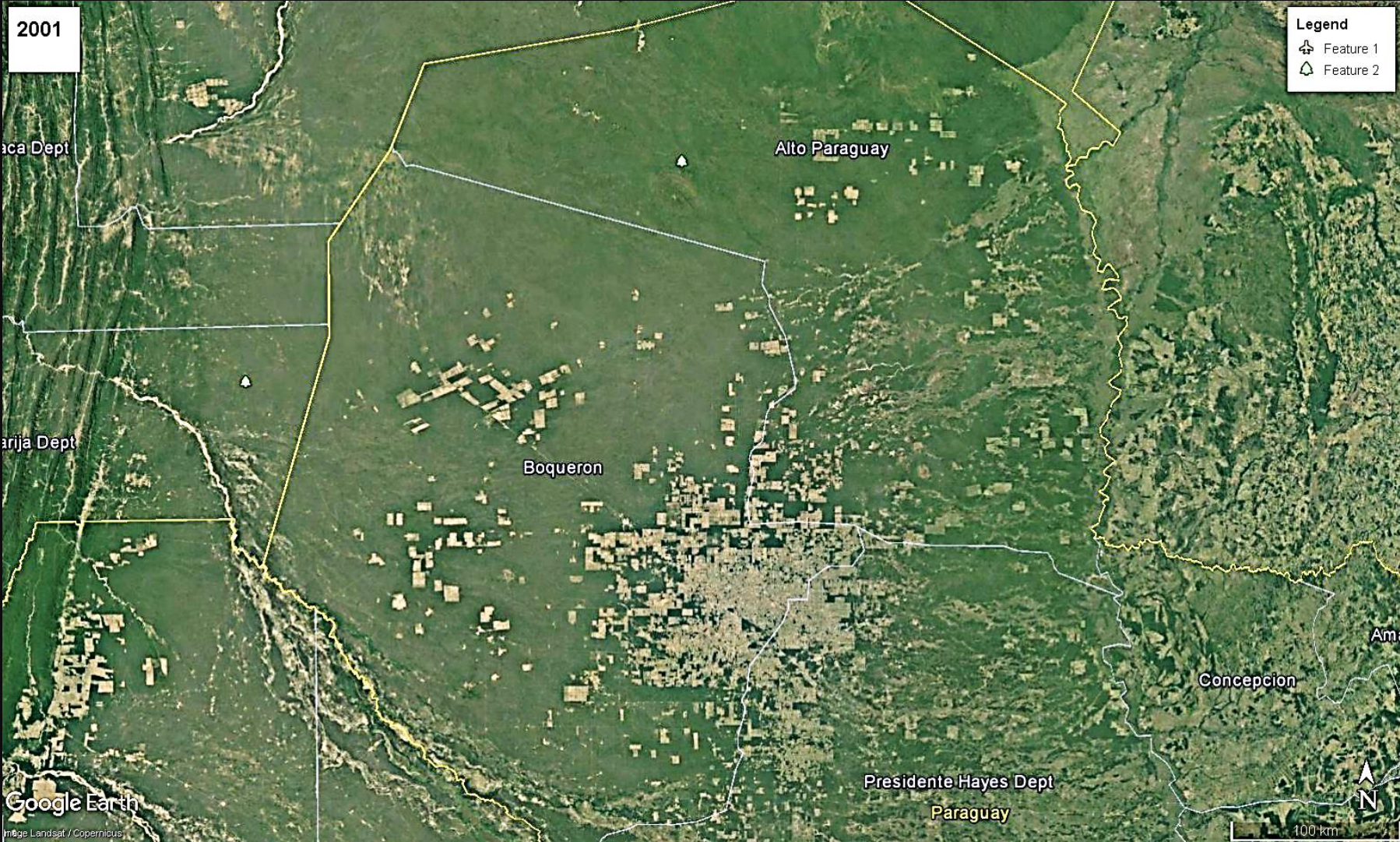


Deforestation of the Paraguayan Chaco 2000 to 2016

by Juan Manuel Campos Krauer







2001

Legend

- Feature 1
- Feature 2

aca Dept

Alto Paraguay

arija Dept

Boqueron

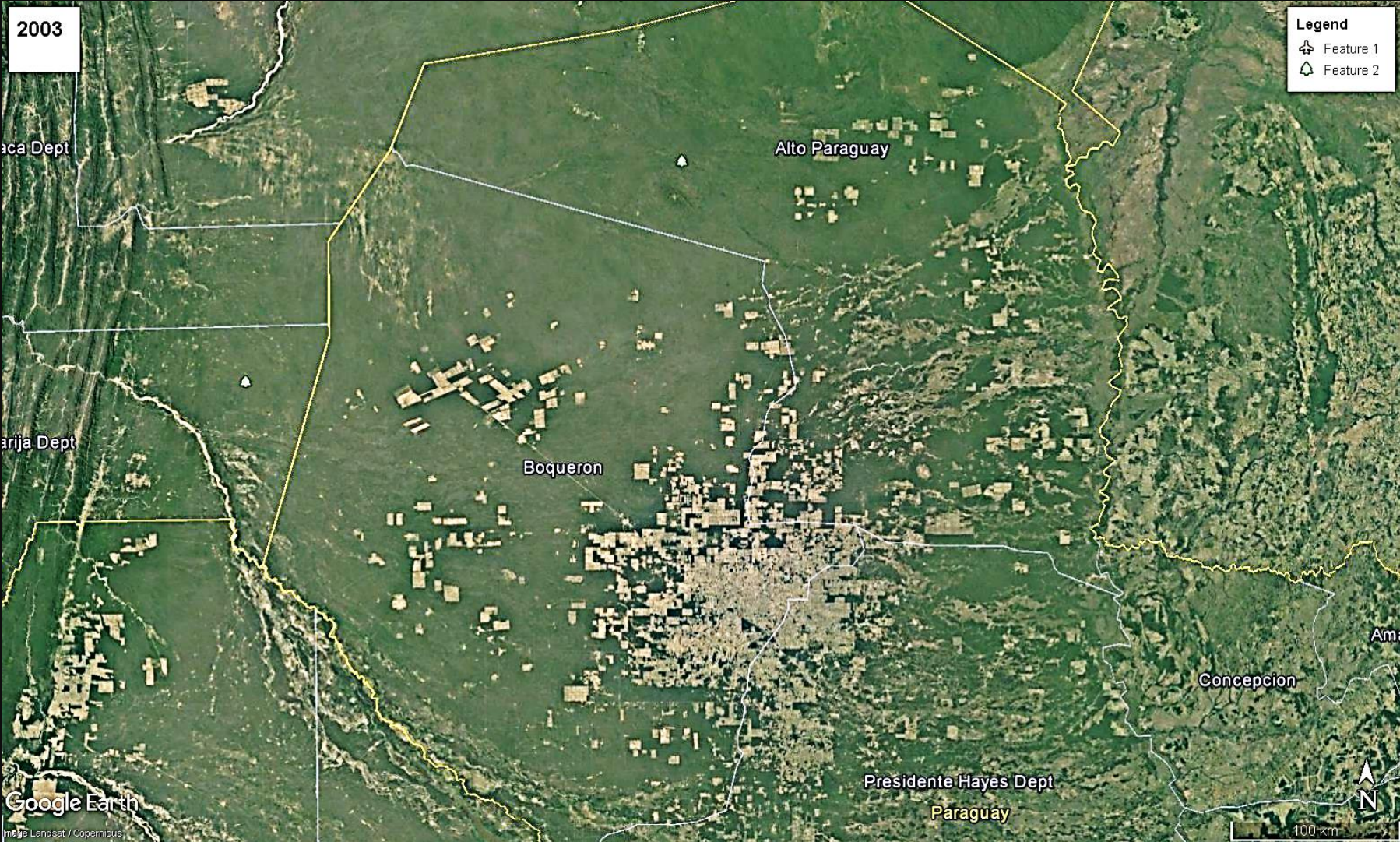
Am

Concepcion

Google Earth

Presidente Hayes Dept
Paraguay

100 km



2003

Legend

- Feature 1
- Feature 2

aca Dept

Alto Paraguay

arija Dept

Boqueron

Am

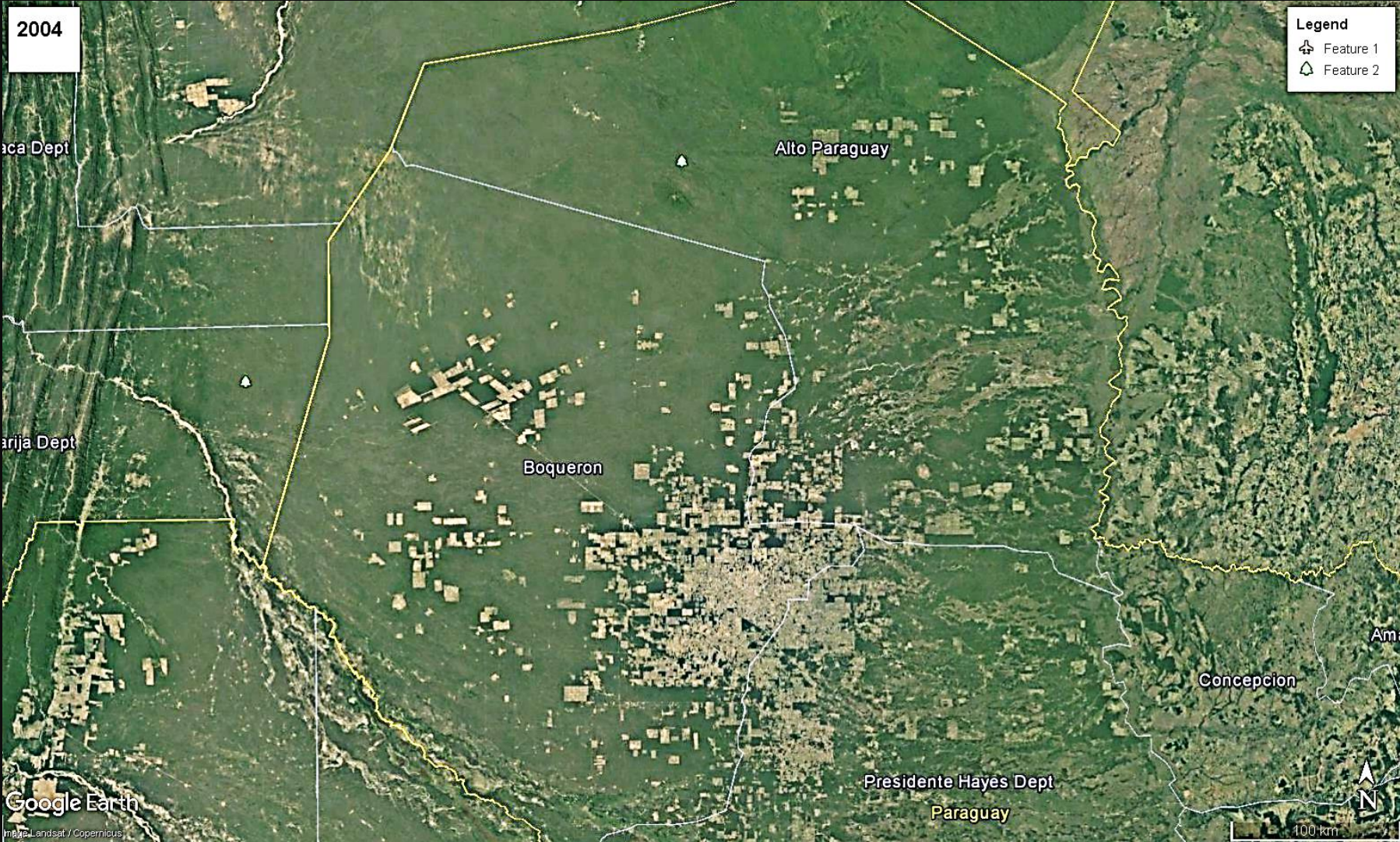
Concepcion

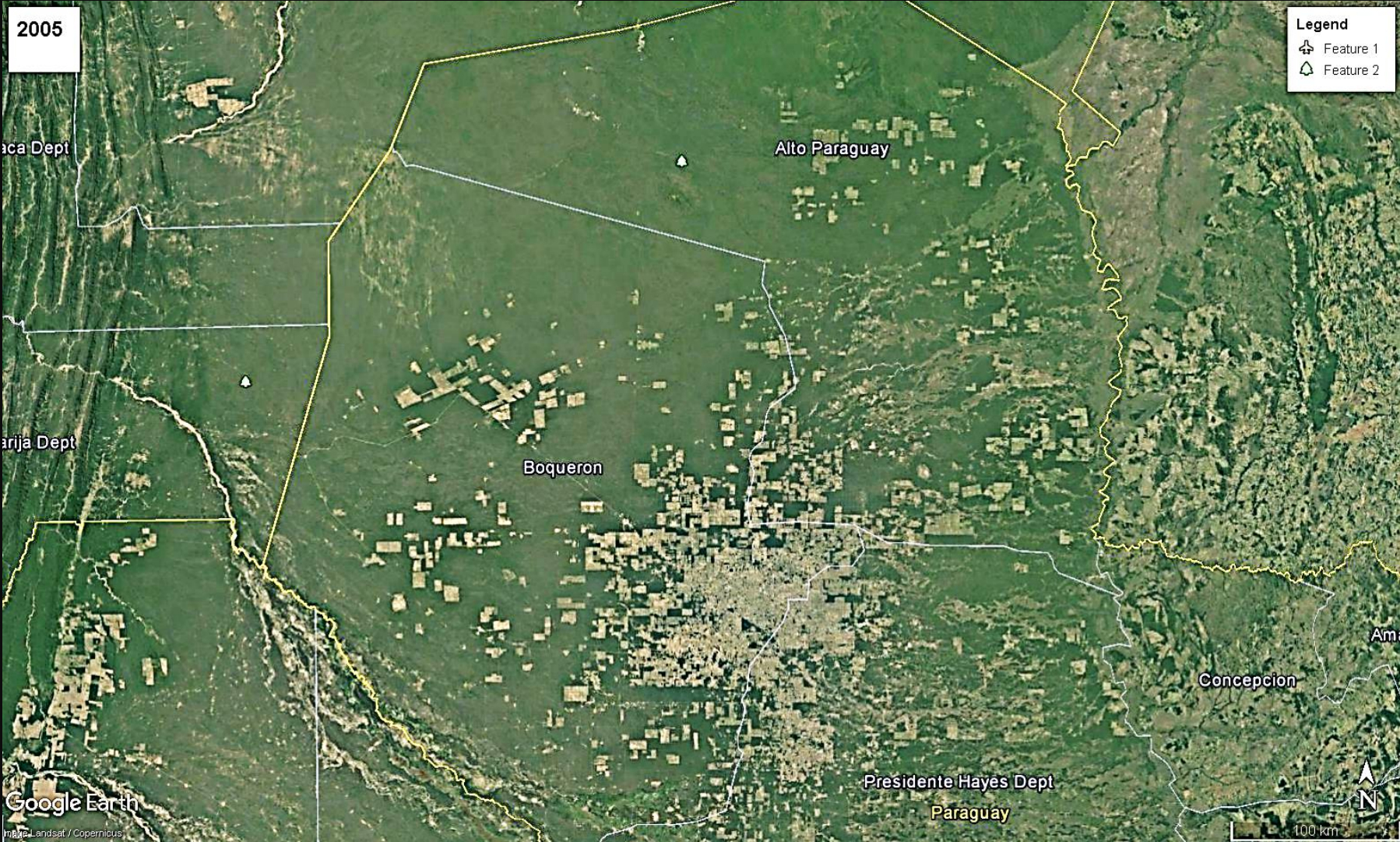
Google Earth

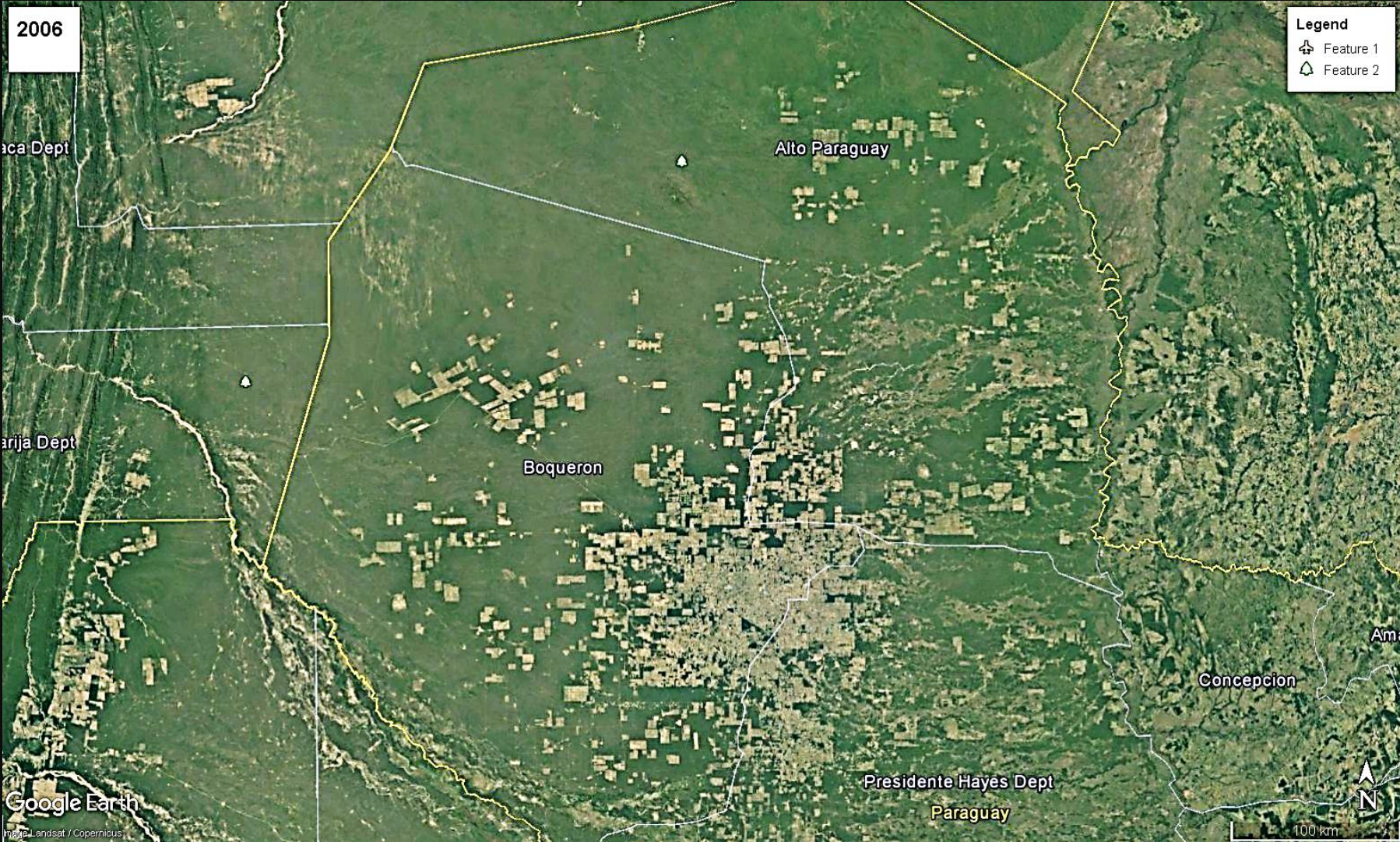
Presidente Hayes Dept

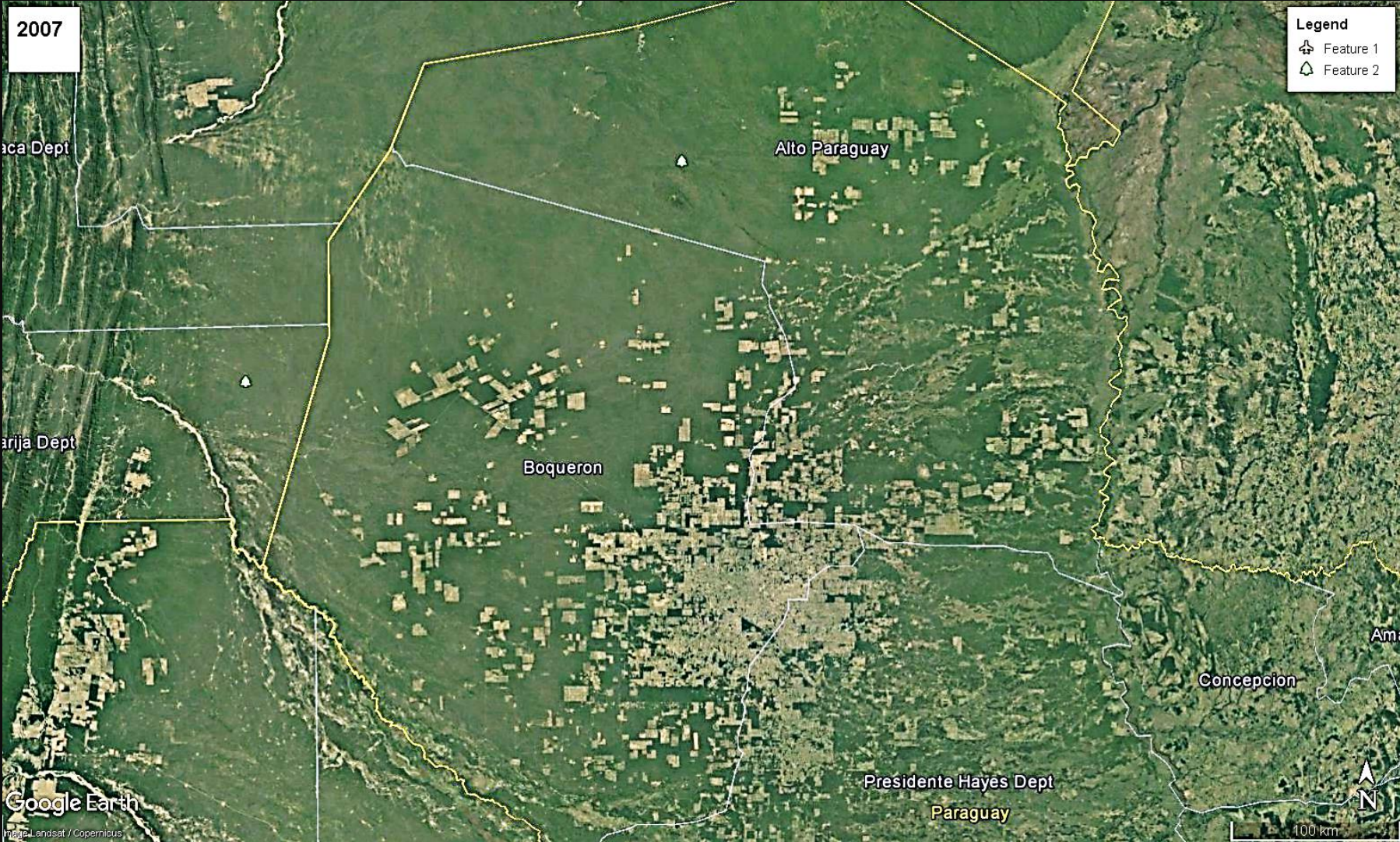
Paraguay

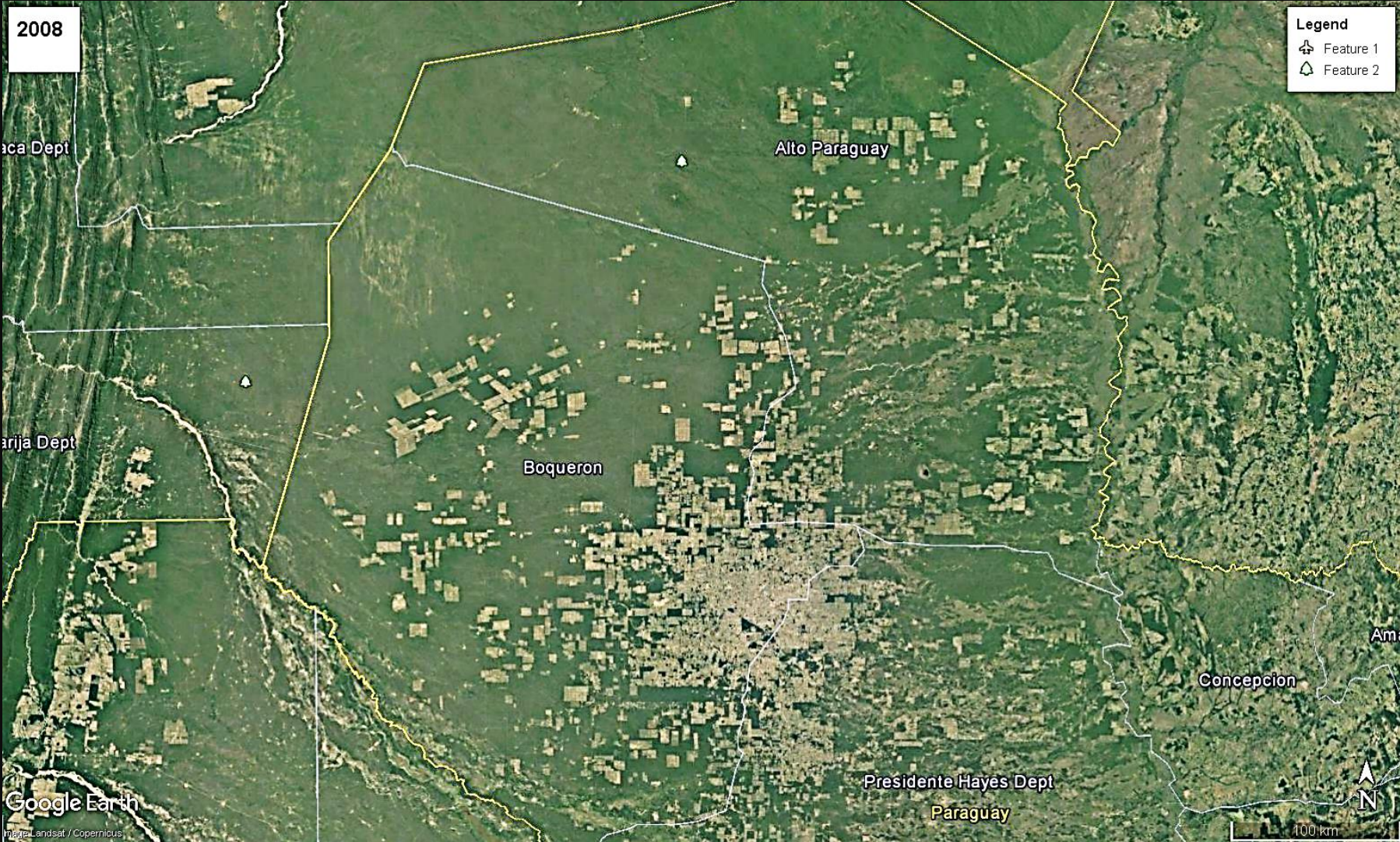
100 km

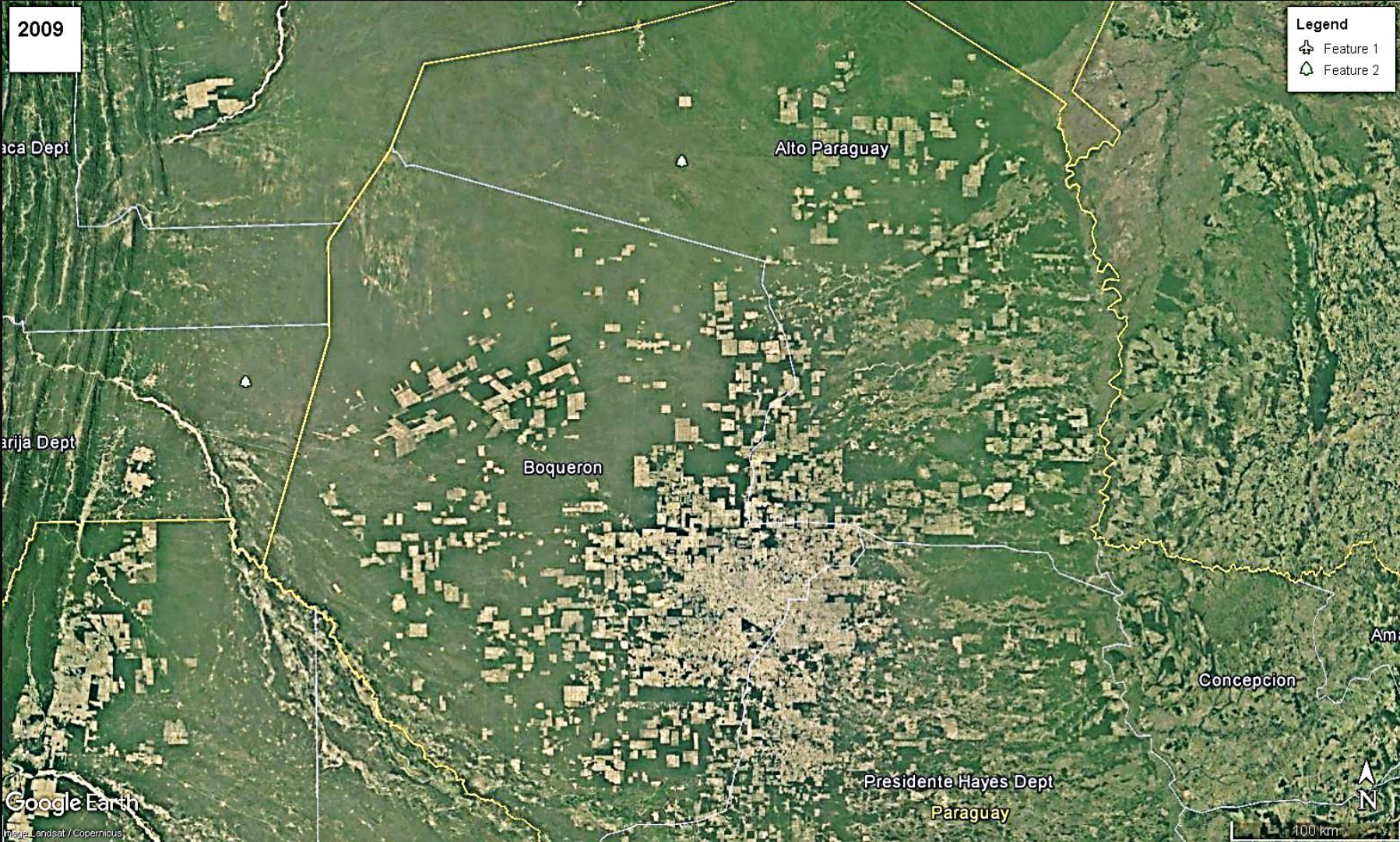


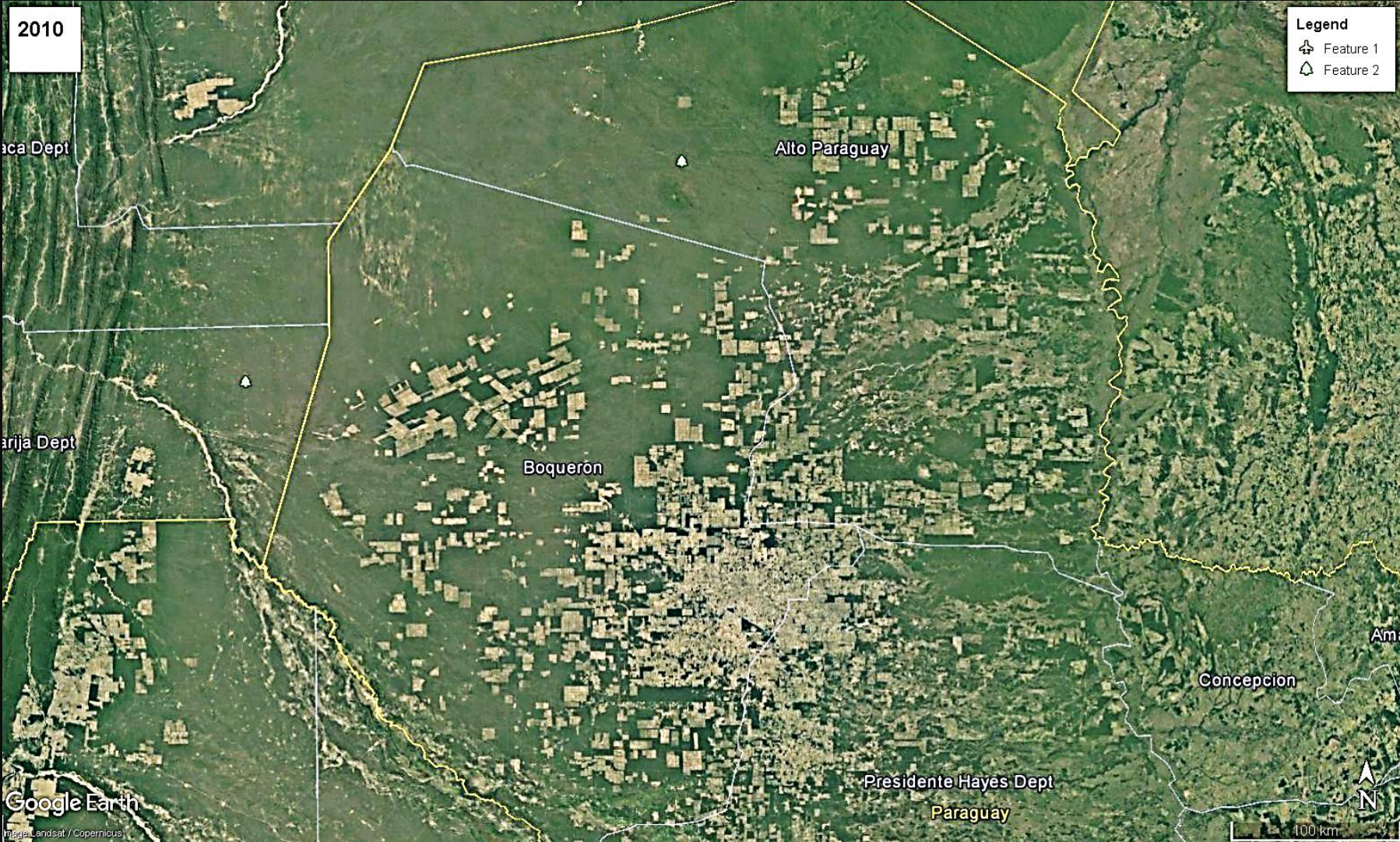












2010

Legend

- Feature 1
- Feature 2

Itapúa Dept

Alto Paraguay

Itapúa Dept

Boqueron

Concepcion

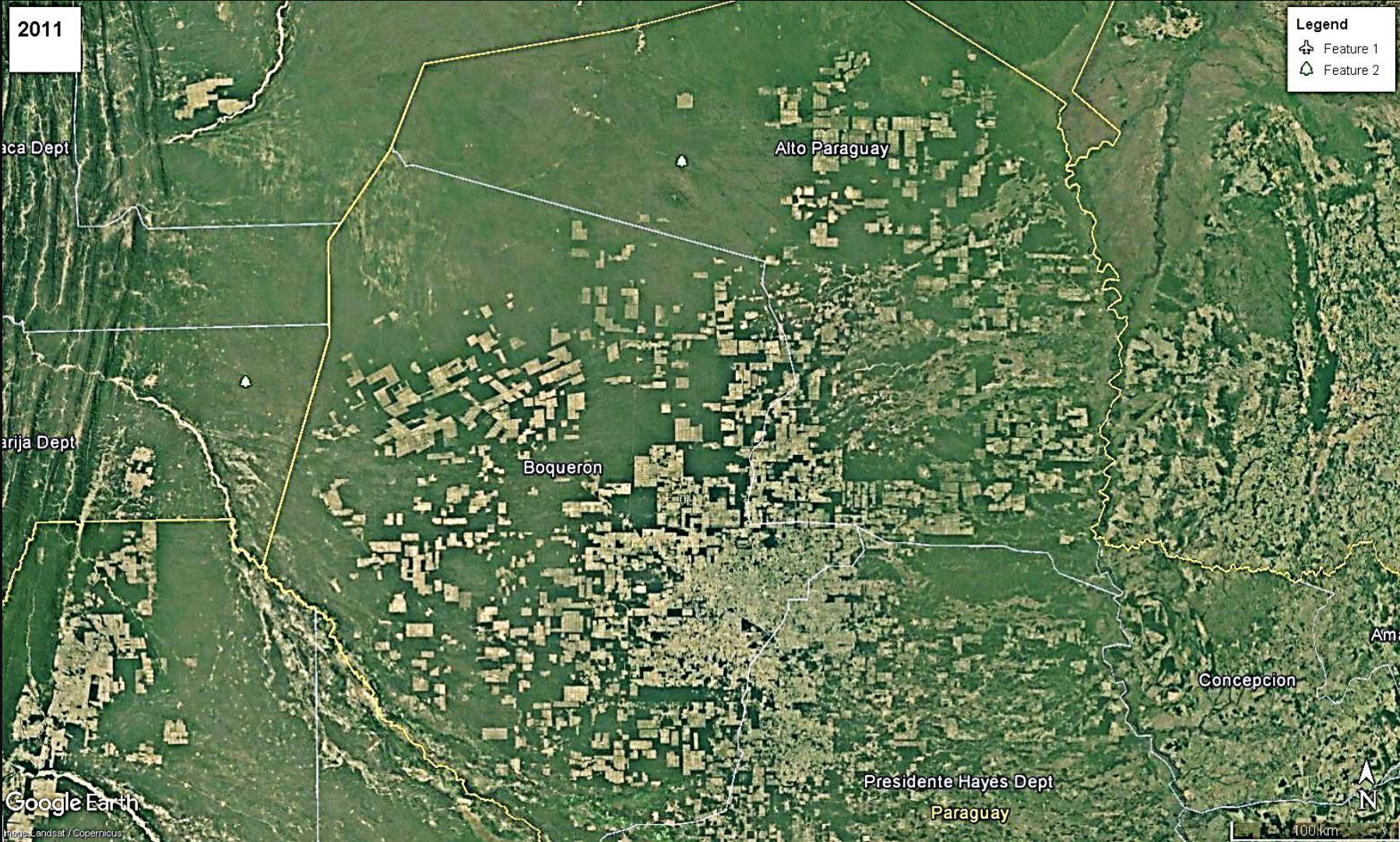
Am...

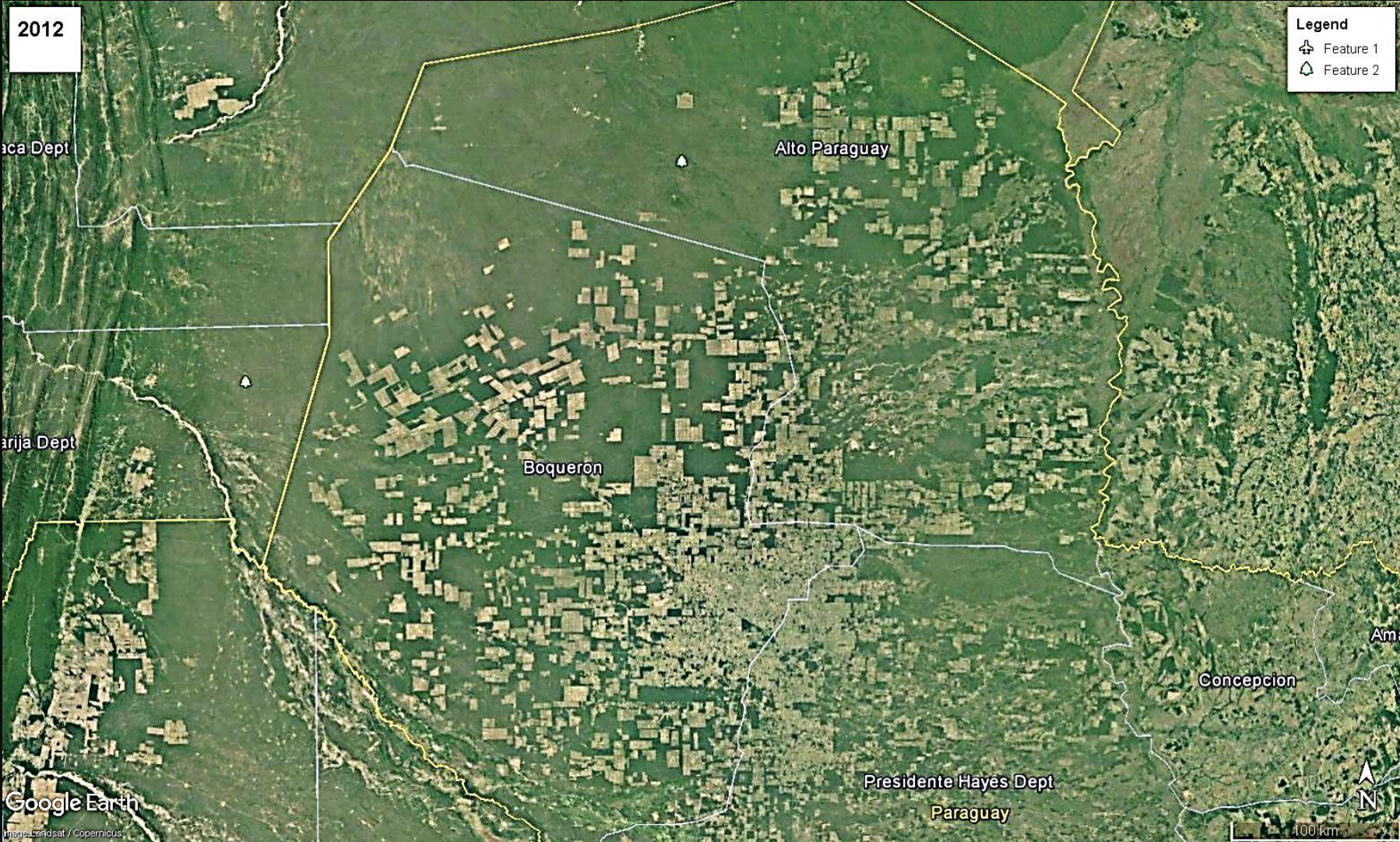
Presidente Hayes Dept
Paraguay

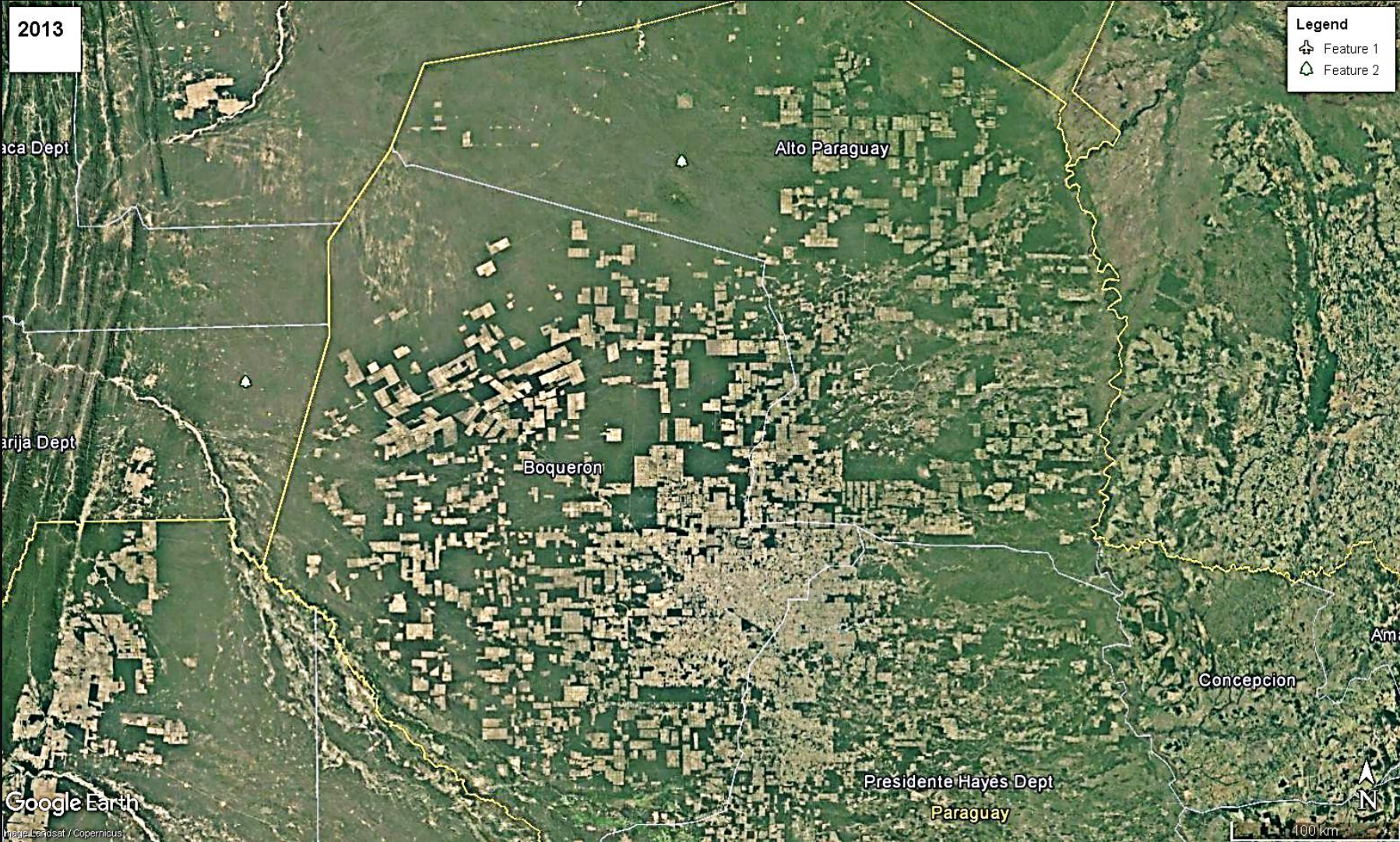
Google Earth

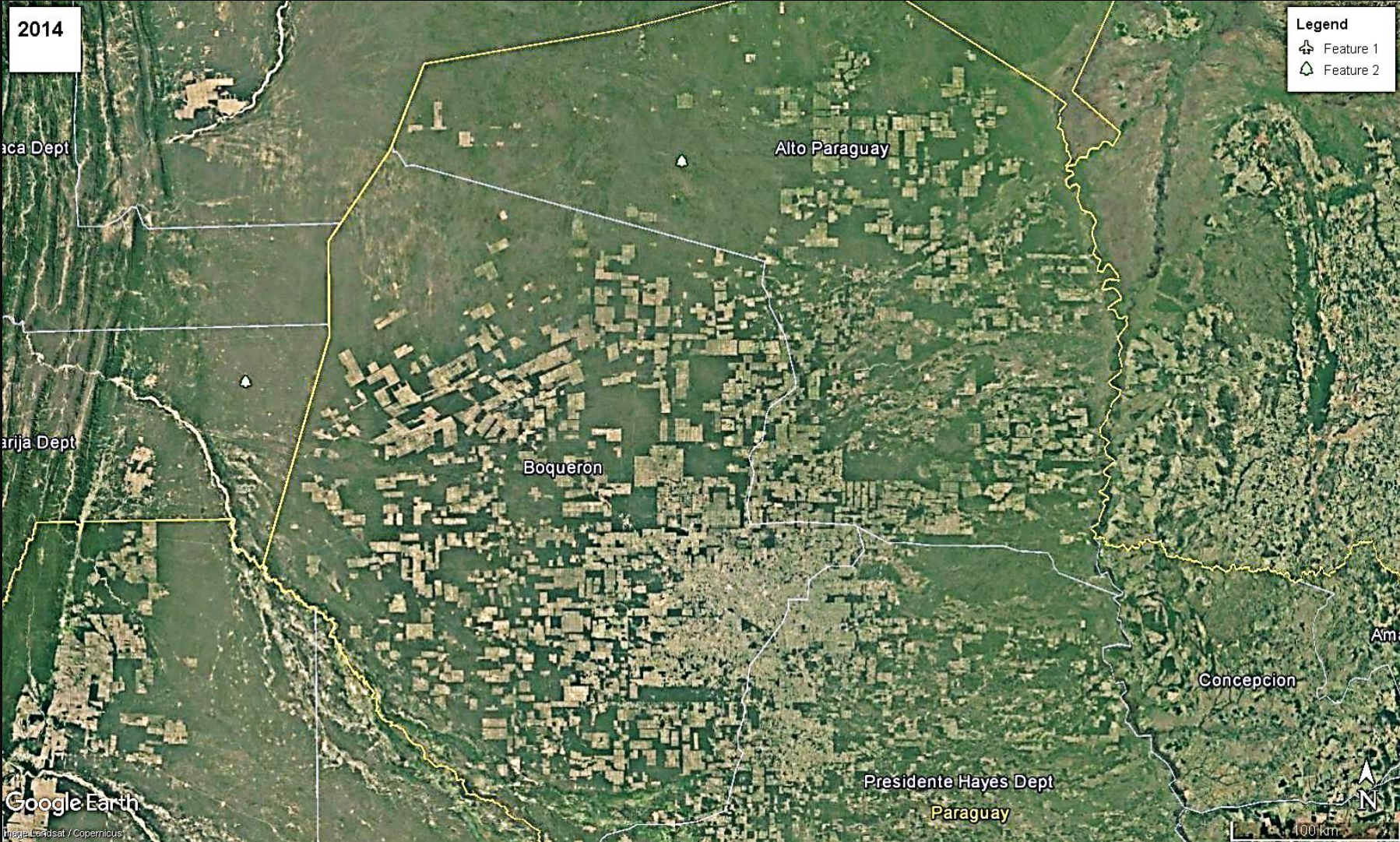
Image Landsat / Copernicus

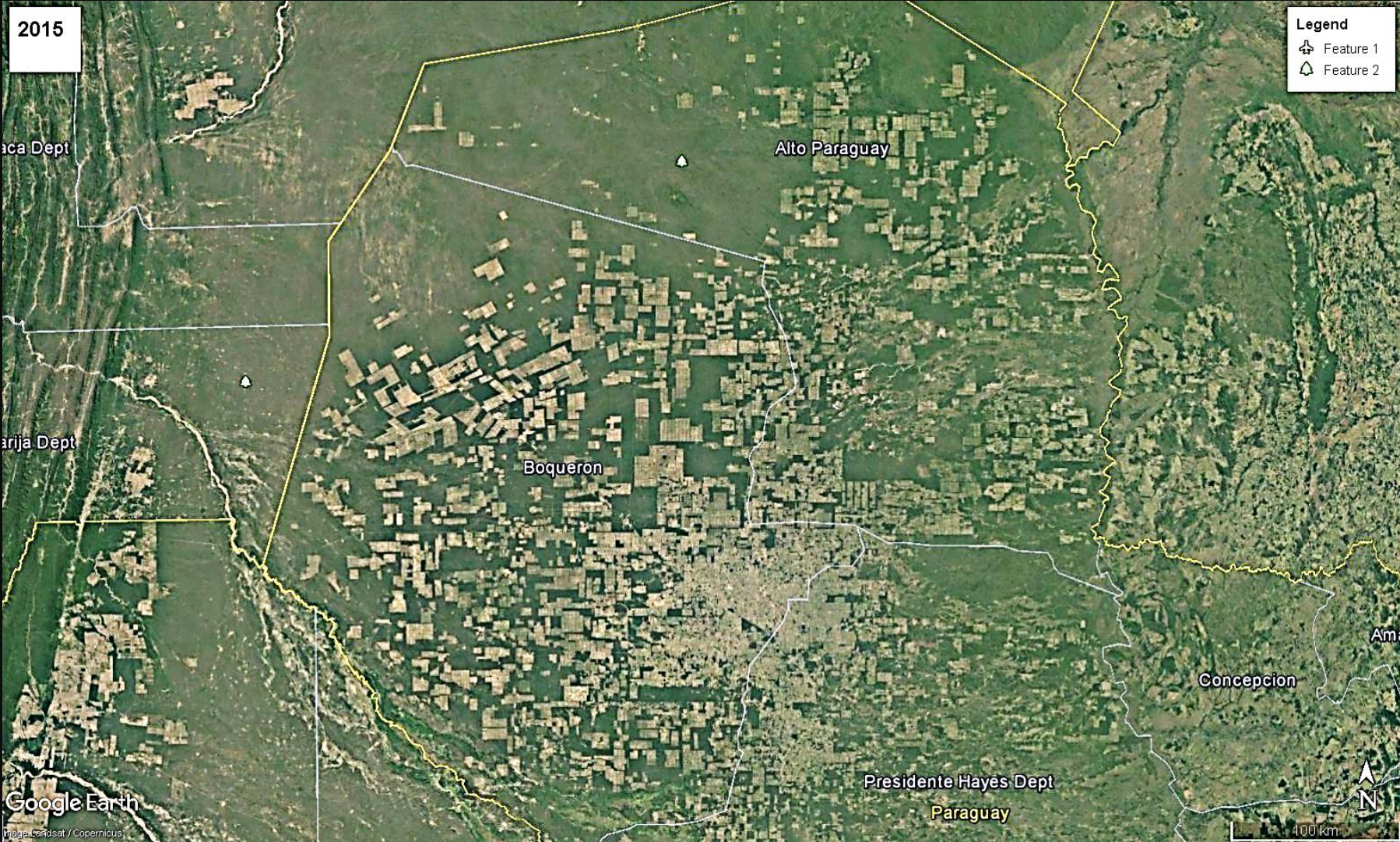
100 km











2015

Legend
Feature 1
Feature 2

aca Dept

Alto Paraguay

arija Dept

Boqueron

Am

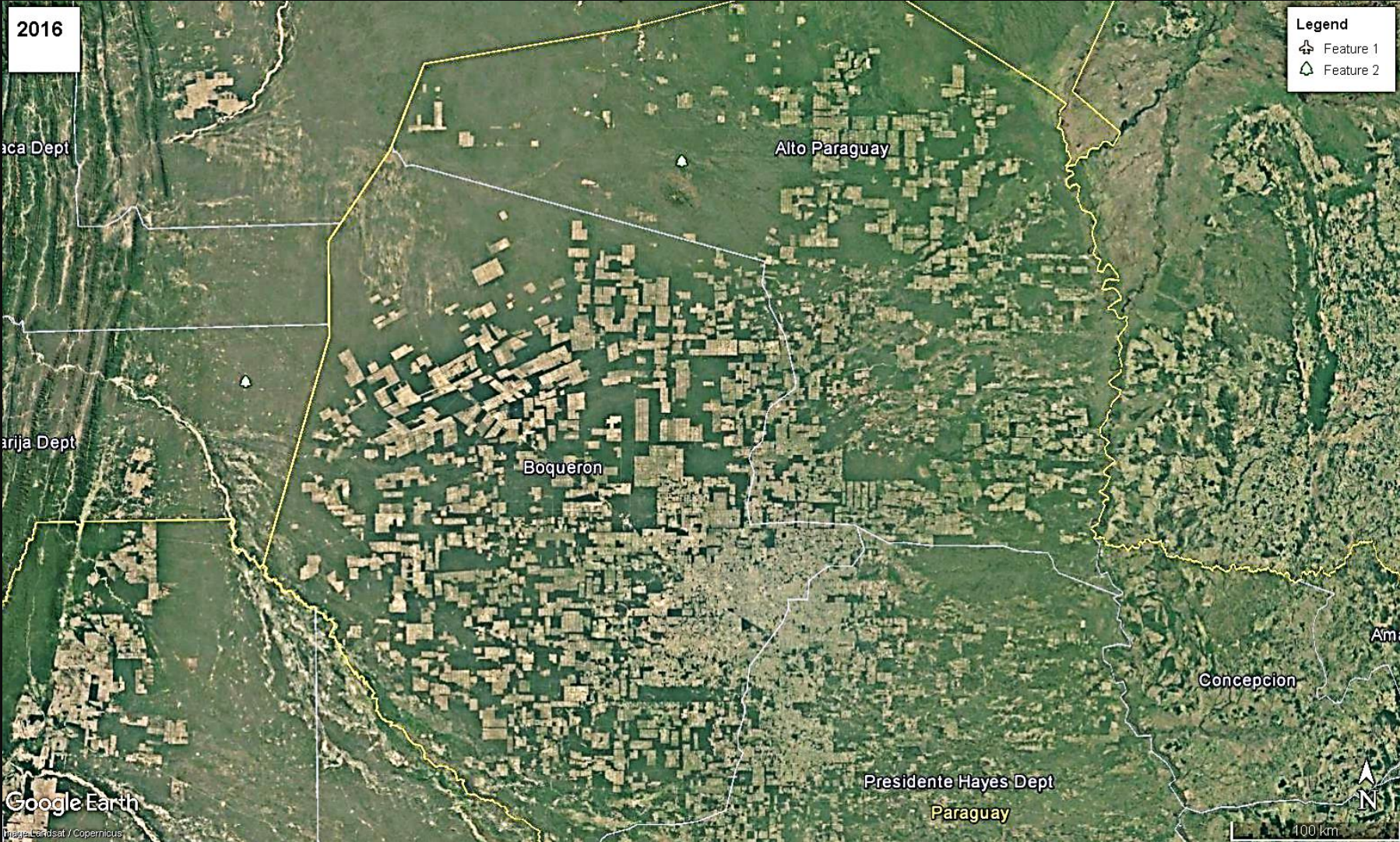
Concepcion

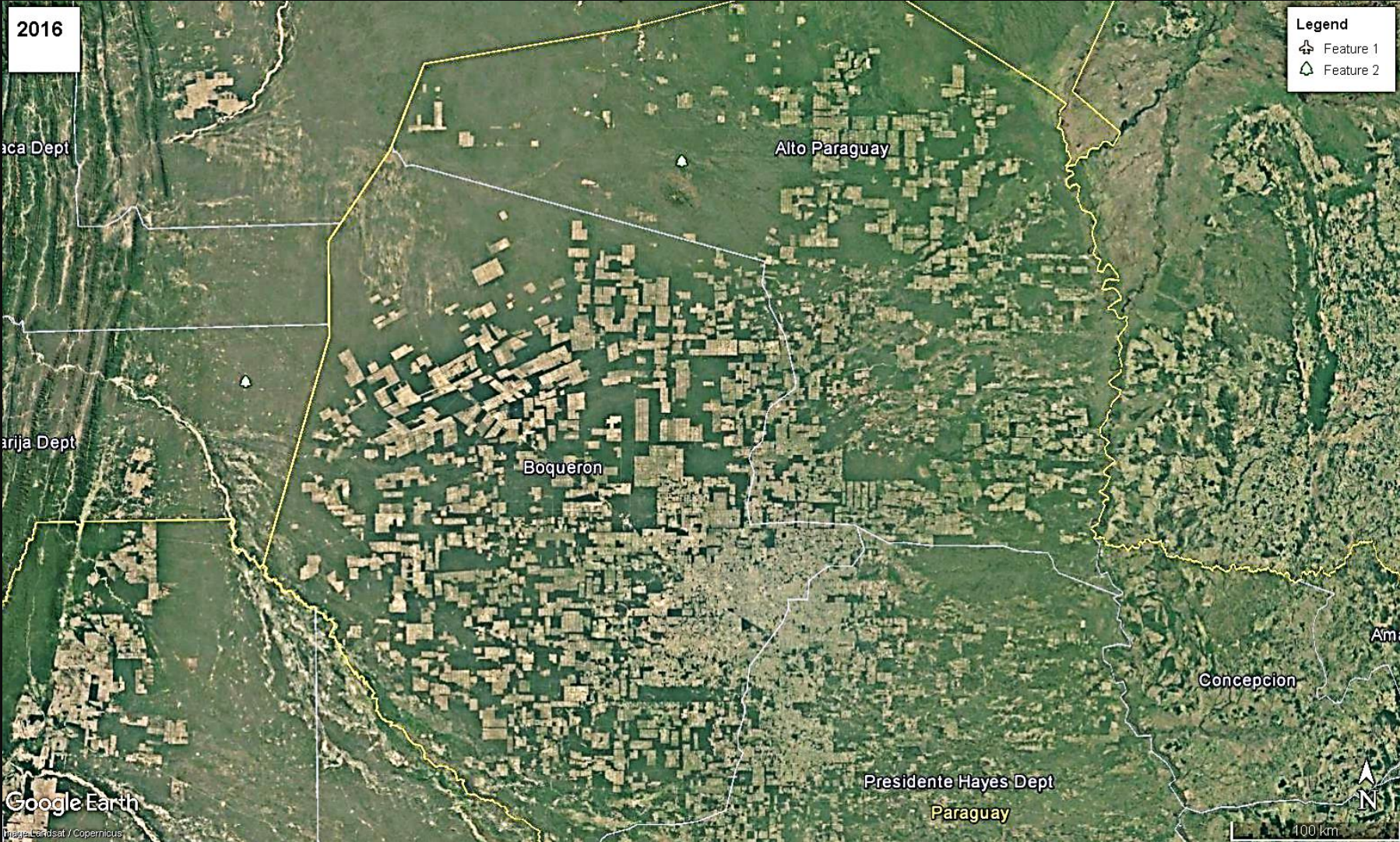
Google Earth

Presidente Hayes Dept
Paraguay

100 km

Imagery Landsat / Copernicus





Factors Affecting Chacoan peccary Conservation

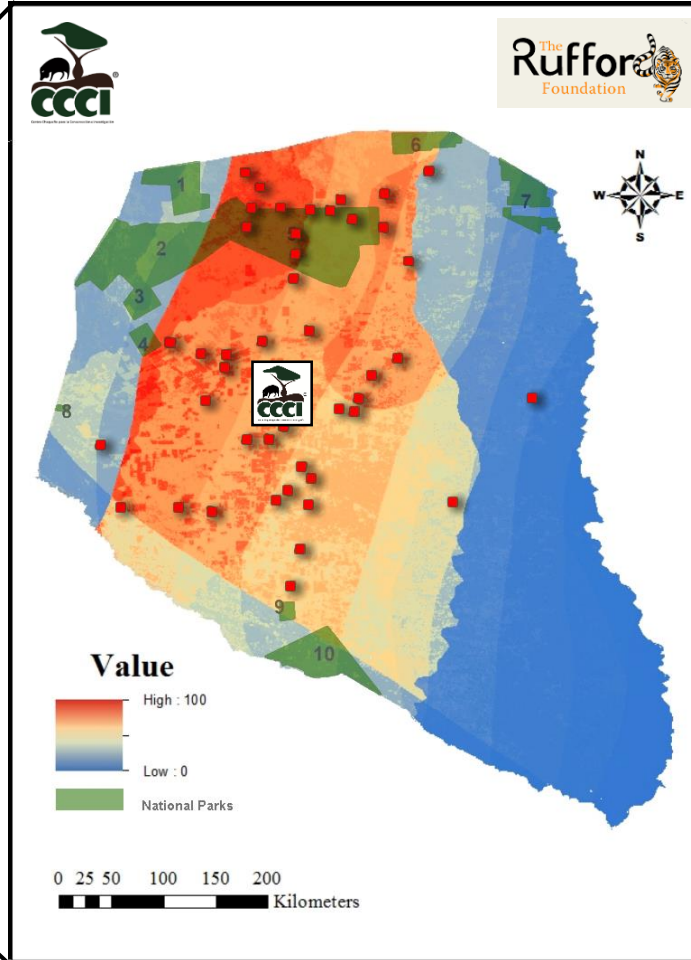
- *Illegal hunting*



Research and conservation



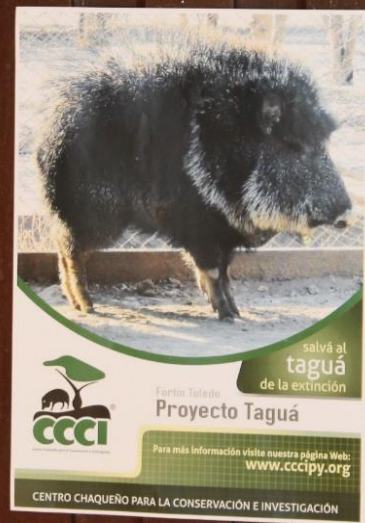
A Range-Wide Survey to Determine the Current Distribution and Population Status of the Chacoan Peccary in the Paraguayan Chaco



Extension

*Native Paraguayan
Latin
Europeans
Mennonites
Amerindians*

*Subsistent
Small
Big*



Catagonus wagneri Conservation Plan Workshop

Asuncion Paraguay 2016



Acknowledgments

Thanks to all zoos, organizations and private donors that make this conservation project possible

Thanks to all the people that have helped the project.



25°C



12/15/2016

07:51AM

CON018



Questions?

