

In-Wall TVCoverups Installation Guide

Review entire guide and attached notes before beginning process

Prepare a rough opening above the fireplace approx. $\frac{1}{4}$ '' larger than the dimensions of the Box. Headed out with 2x4 as if you were putting a window in the wall (to minimize drywall work, 2x4 sections can be put between the existing studs and toenailed into place).

* Note that the frame overlaps the box by approx. 1" so if you want the art 4 inches off the fireplace you would need to insure the rough opening is 5 inches off the mantle.*

A. TV hardware needs to be installed in box prior to installing in the wall.

B. Determine where to cut your holes for power access etc., and make all necessary adaptations to the box.

C. Install box into the wall opening, forward of the wall $\frac{1}{4}$ '' to $\frac{1}{2}$ '' and screw into place through the side walls of the box.

1. Pull through necessary cables and power cords

2. Ensure to use shim material if opening is too large to prevent distortion of box

D.) Use drywall screws to screw the box into place on all four sides. It is best to predrill and insure not to tighten too much.

E. Install TV onto the TV installation hardware. (If using tilting or articulating TV hardware with an automatic unit be sure to install provided limit switches)

If a manual unit, raise the arms and attach the bottom of the Gas Spring. The large cylinder of the Gas Spring should be attached to the picture frame arm, keeping the rod in liquid to prevent drying out. **When raising & lowering manual unit, ONLY close from center of frame.**

WARNING: Do not try to test the manual unit Gas Springs, they will not close and trying to do so could cause physical harm

F. If automated, power up TVC unit, and press button to raise the arms.

G.) Lift the retrofitted artwork or panel into place and ensure the top of the arm is perfectly flush to the top of the picture frame. Screw the art into place through face of arms into picture frame. Double check length of screw and depth of picture frame to ensure screw doesn't break the surface of the picture frame.

1. "A" screws to be screwed through face of arm to picture frame

2. "B" screws to be screwed through side of arm into retrofitted framework

3. Use $\frac{1}{4}$ hex or provided wrench to insert screw #2 through sides of aluminum arms

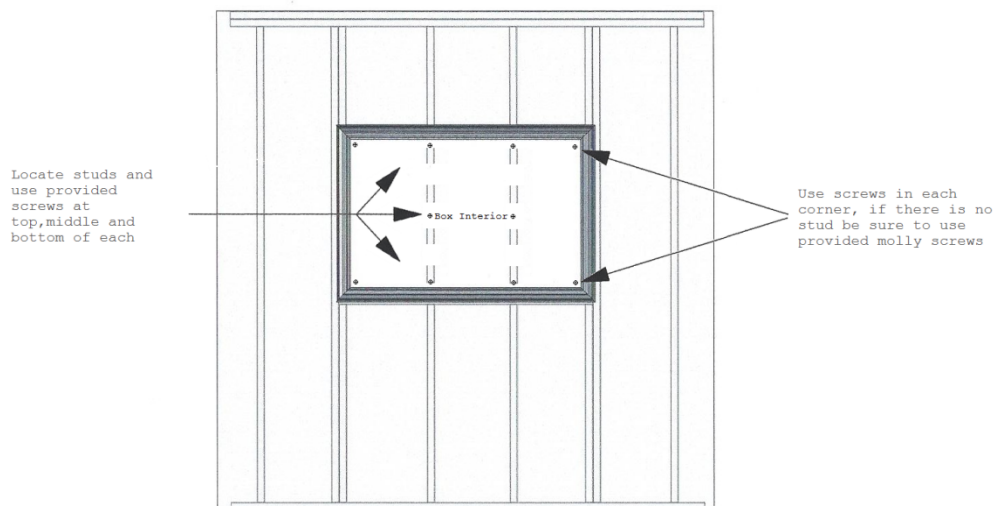
H.) You can mount the TV before or after mounting the artwork.

I.) **Pull the art down from center of frame. (If automated, use controls to close and open)**

On-Wall TVCoverups Installation Guide

Review entire guide and attached notes before beginning process

- A.) Run electrical wiring and cable down through wall (or run along wall)
- B.) Determine where your studs are, predrill holes to match in box. Be sure to know where TV mounting bracket needs to be.

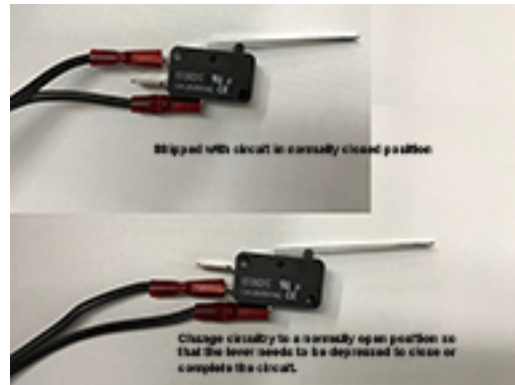


- C.) Lift and screw into place, place provided black "stick-ons" over screws if necessary.
- D.) Mount TV mounting bracket into box
- E.) Lift the artwork into place and ensure the top of the arm is perfectly flush to the top of the picture frame. And screw the art into place.
- F.) You can mount the TV before or after mounting the artwork. Install TV onto the TV installation hardware. (If using tilting or articulating TV hardware with an automatic unit be sure to install provided limit switches)
- G.) **Pull the art down from center of frame. (If automated use controls to close and open)**

Notes

- 1.) **WARNING: Do not try to test the manual unit Gas Springs, they will not close and trying to do so could cause physical harm**
- 2.) Art should only be installed /or removed when arms are in the up position, by screwing / or unscrewing the doughnut clips in the bottom of the keyhole opening on the arms.
- 3.) In the case of a retrofitted panel, screw into the sides of the retrofitted framework.
- 4.) If automated only open and close arms mechanically, using the remote control. The top clevis of the motors has a 1/4 dia hole with a slightly tapered open slot to allow the motors to detach from the arms
- 5.) Tubes can be removed by unscrewing counter clockwise. Ensure not to remove grease which is a necessary lubricant. Place clevis opening parallel on a hard surface. Put the 1/4'' pin in place and tap the outer edge with a hammer.
- 6.) If TV is on hardware that positions the TV in the path of the closed art, limit switches need to be used to prevent framed art from coming down on the TV, cutting off power to the unit when TV is not fully retracted. 2 are included and can be kept on continuous line or run from the blue line from the bottom left. **(See wiring diagram)**
- 7.) Motors length + shaft can be adjusted to be shorter by turning clockwise and longer by counter clockwise, do not adjust more than 1 complete turn without testing. 1/8''-1/4'' can make a big difference in the length of travel with the established fixed points.

Shipped in normally closed position



Switch to normally open position for use

IMPORTANT

The limit switch (coming out of the right casing) needs to be put in a location where the TV (or TV mount) will close the switch, when it retracts into the installation box. This prevents the art or panel from coming down on a TV that is articulated out of the installation box.

The limit switch (which cuts the power when the TV is out), is set with the wires separated so that the circuit is normally closed, and operates with the microswitch open. To activate the microswitch, switch the bottom line to the middle post, making the switch normally open. Now the switch will need to be closed to complete the circuit.

So if the TV is out, and the down button doesn't work, simply push the TV back in, to close the micro switch, then push the down button. All will be back to normal.

Note: The limit switch cuts the power to the units, **but the computer is still running**. So when testing, if the switch is open and cuts the power while you are pushing the down button - **don't push the up button**. There is a reserve power and the computer within exhausts that power, gets confused and shuts down. In which case, you need to disconnect the power from the bottom of the control box. Disconnect for a minute or more, then reconnect power, and press the up button on your remote. Your remote may also need to be re-synced.

Resetting the remote: Disconnect the power from the bottom of the control box, and wait for a minute or more. There is a small hole in the lower front of the left hand unit. Using a paper clip or something similar, go into the hole until you can feel that you are depressing a button. Connect the power and push the button inside that hole and hold it there, while you activate the up button on the remote control.

Note that the black crimp (holding the cord going into the right side box) is somewhat loose. This allows you to feed any unnecessary length of cord into the unit.

Retrofit Unit

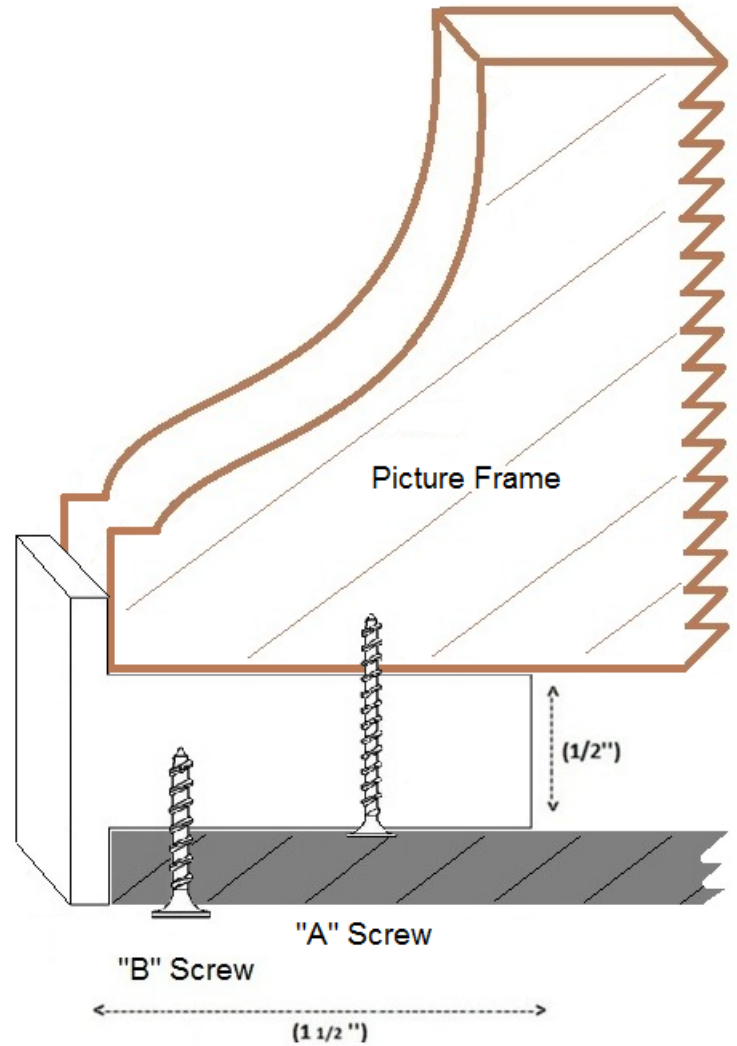
Includes:

Retrofit Framework

Black linen backed Gatorboard

Prepare Retrofitted Picture Frame For Installation:

- A. Picture frame to fit inside lip (A) of retrofit framework
- B. Outside is finished to match picture frame.
- C. Screw snugly into place
- D. Insert back with black linen covered Gatorboard and screw into place



Prepare Retrofitted Panel For Installation:

- A. Glue panel into retro framework
- B. Finish panel, paint etc.
- C. Screw black linen backed Gatorboard into place

