

# art leaguehouston



Summer **2013** Classes



# Summer 2013 Art Camp

Conveniently in Montrose  
Professional teaching artists  
By the week to match any family's schedule

**art**  
leaguehouston

**Art League's Summer Art Camps** provide children with creative, fun ways to engage their imaginations through visual art activities. Each one week session is thematic in nature and taught by one of Art League's outstanding teaching artists. As kids create art, they will explore ideas, learn arts vocabulary, and experiment with a variety of arts media. They will reinforce skills such as problem solving, observation, and cooperation. Most of all, they will have fun!

Each Summer Art Camp is five days in length from Monday through Friday, 10:00 AM to 3:00 PM daily. Early care and late care are available. Art League Houston provides all art supplies, a camp t-shirt, and snacks. Campers must bring a sack lunch each day.

## CAMP FEES per week, per child

**General Registration** (APRIL 15 – May 31):

\$235 Non-Members / \$200 Art League Family Members

**Late Registration** (AFTER MAY 31): \$260 Non-Members /

\$225 Art League Family Members

**Optional Early and Late Care:** per week, per child \$100

(9:00 AM – 4:00 PM, with camp instruction from 10:00 AM – 3:00 PM)

## WEEKLY CAMP SESSIONS

### AGES 5-8

**Session 1, June 10-14,** Exploring Art Materials, from 2-D to 3-D

**Session 2, June 17-21,** Color, Color Everywhere!

**Session 3, June 24-28,** Nature and Art

**Session 4, July 8-12,** Animals, Movement, and Art

**Session 5, July 15-19,** Imaginary Worlds & Creatures: Sculpture, Pencil, and Paint

**Session 6, July 22-26,** A Trip Around the World

### AGES 9-12

**Session 7, June 10-14,** Going Mad: Mad-Lib Book Making & Illustrating

**Session 8, June 17-21,** Gustav Klimt: Enjoying Color & Pattern

**Session 9, June 24-28,** Mix it Up!

**Session 10, July 8-12,** Draw, Print, Draw!!!

**Session 11, July 15-19,** Adventures with Sculpture

**Session 12, July 22-26,** Delve into Pop-Up Books

**To register,** call 713-523-9530 or visit our website, [www.artleaguehouston.org](http://www.artleaguehouston.org), for more information!



## New This Summer! GRAPHIC NOVELS FOR TEENS

**ANNE J. REGAN; All Levels**

**TUESDAY, 1:00 – 4:00 PM**

**JULY 9 – AUGUST 13 (6 weeks)**

**\$195**

In this course, teens (ages 14-18) will create their own series of comics or a graphic novel. We will focus on storytelling, narrative drawing and the creation of a personal visual language. Varying mediums will be encouraged. All levels, beginner to advanced, superhero comic lover to experimental art comic kid, are encouraged to join.

# Registration Calendar

pre-reg: June 3 – 8 **SPRING STUDENTS ONLY**

early reg: June 10 – 15 \$25 savings!

gen reg: June 17 – 29

late reg: begins July 1 \$15 late fee

All classes are limited to 12 students. Classes are for students ages 17 and older, unless instructor consent is given. **All classes have a recommended list of materials which students are responsible for purchasing. Materials lists will be distributed to students upon registration.** Lab fees do not include materials.

## drawing

### CLASSICAL FIGURE DRAWING (D-1)

POLLY LIU; Intermediate

MONDAY, 12:30 PM – 3:30 PM

July 8 – August 26 (8 weeks)

\$260 members / \$295 non-members + \$model fee

In this class, students are introduced to French Atelier training to draw the human figure. The method of sight size, a fundamental scale system, is used to reproduce the figure accurately. Students work from a live model focusing on outline, proportion, shadow, shape and value. Model fee is due the first day of class, and the fee varies according to class size.

### BEGINNER'S DRAWING TECHNIQUE (D-2)

STEVEN HOOK; All Levels

MONDAY, 6:30 – 9:30 PM

July 8 – August 26 (8 weeks)

\$260 members / \$295 non-members

This course will introduce each student to graphite, charcoal, ink and other drawing materials. Beginning with graphite, the class will explore various methods and techniques of using each medium; teaching accuracy and precision as well as loose expression.

### CLASSICAL FIGURE DRAWING (D-3)

POLLY LIU; Intermediate

TUESDAY, 9:00 AM – 12:00 PM

July 9 – August 27 (8 weeks)

\$260 members / \$295 non-members + \$model fee

In this class, students are introduced to French Atelier training to draw the human figure. The method of sight size, a fundamental scale system, is used to reproduce the figure accurately. Students work from a live model focusing on outline, proportion, shadow, shape and value. Model fee is due the first day of class, and the fee varies according to class size.

### FIGURE DRAWING (D-4)

STEVEN HOOK; All Levels

WEDNESDAY, 6:30 – 9:30 PM

July 10 – August 28 (8 weeks)

\$260 members / \$295 non-members + \$model fee

Using live models students will draw the figure. Starting with short poses and gestures, the class will build to longer poses and developed fully-rendered figures.

## mixed media

### COLLAGE + ACRYLIC PAINTING (MM-1)

PREETIKA RAJGARIAH; All Levels

MONDAY, 9:30 AM – 12:30 PM

July 8 – August 26 (8 weeks)

\$260 members / \$295 non-members

In this course, students will be encouraged to take risks and push mediums to the next level. Students of all levels will explore new ideas in mixed media painting, incorporating acrylic painting and collage techniques, as well as considering the use of unconventional surfaces. We will explore layering experimental mediums, photo transfers, and collage in depth, striving for results that go beyond the obvious, and

hope to leave people wondering how a painting was created. Each painter is encouraged to find his or her unique direction working abstractly and to develop a concept they feel strongly about. Everyone will benefit from the sharing of ideas and constructive criticism.

## painting

### CLASSICAL FIGURE PAINTING IN OIL (P-1)

POLLY LIU; Intermediate to Advanced

MONDAY, 9:00 AM – 12:00 PM

July 8 – August 26 (8 weeks)

\$260 members / \$295 non-members + \$model fee

In this class, students begin painting in Grisaille – painting executed entirely in monochrome and usually in shades of grey or brown – to eliminate the problems of color and value and to concentrate on accuracy of drawing and the effects of light. The second part of the class utilizes a limited palette, allowing students to explore and understand the harmony and unity of light. Model fee is due the first day of class, and the fee varies by class size.

### EXPRESSIONIST PORTRAIT AND FIGURE PAINTING (P-2)

KELLY ALISON; All Levels

MONDAY, 6:30 PM – 9:30 PM

July 8 – August 26 (8 weeks)

\$260 members / \$295 non-members + \$model fee

In this class, students will paint figures and portraits from live models, inspired by the tradition of the European Expressionists such as Jawlensky, Beckmann, Munch, Kollwitz, Schiele, Bacon, Gauguin, and Van Gogh. Students will learn how to understand and create emotional qualities through color and composition by studying the process of these expressionist masters. There will be weekly demonstrations that beginners can easily follow as more experienced students are encouraged to find their own individual style. Classes will be taught in oils, but students may work in acrylics if they prefer.

### BEGINNING PAINTING: FOCUS ON ABSTRACTION (P-2)

JONATHAN LEACH; All Levels

TUESDAY, 9:30 AM – 12:30 PM

July 9 – August 27 (8 weeks)

\$260 members / \$295 non-members

This class will focus on the world of abstract painting. We will learn about painting techniques associated with abstract acrylic painting, color theory, composition, and even bringing in sculptural elements to achieve successful abstractions. We will put these techniques into practice and the artists in this class will learn to freely express themselves through the veil of abstraction.

### CLASSICAL PORTRAIT PAINTING IN OIL (P-3)

POLLY LIU; Intermediate to Advanced

TUESDAY, 12:30 PM – 3:30 PM

July 9 – August 27 (8 weeks)

\$260 members / \$295 non-members + \$model fee

In this class, students begin painting in Grisaille – painting executed entirely in monochrome and usually in shades of grey or brown – to eliminate the problems of color and value and to concentrate on accuracy of drawing and the effects of light. The second part of the class utilizes a limited palette, allowing students to explore and understand the harmony and unity of light. Model fee is due the first day of class, and the fee varies by class size.

### BEGINNER'S OIL PAINTING (P-4)

STEVEN HOOK; All Levels

TUESDAY, 6:30 – 9:30 PM

July 9 – August 27 (8 weeks)

\$260 members / \$295 non-members

Beginner's Oil Painting will focus on familiarizing oneself with materials and mediums used in oil painting while exploring various subjects from direct observation and photographs. Learning to paint with oils can seem daunting, but this class will provide you a simple method of learning to paint with oils.

**LANDSCAPE INTO ART (P-5)**

**STEVE PARKER; All Levels**  
**TUESDAY, 6:30 – 9:30 PM**  
 July 9 – August 27 (8 weeks)  
 \$260 members / \$295 non-members

Utilizing memory and personal experience students are encouraged to render their own impressions of the subject. Individual elements of the landscape are explored and demonstrated. The instructor will offer techniques and specific methods involved in landscape painting. The class includes informal discussions ranging from painting methods to past and present masters. Primary medium is oil, however, acrylic and water-based oil is accepted.

**DIRECT PAINTING (P-6)**

**STEVE PARKER; All Levels**  
**WEDNESDAY, 9:30 AM – 12:30 PM**  
 July 10 – August 28 (8 weeks)  
 \$260 members / \$295 non-members + \$8 materials fee

This class is based on direct observation and rendering of the effect of light on the subject. The instructor will demonstrate and discuss various techniques used by past and present masters of the genre. Beginners will be encouraged to start with drawing and work into painting. Primary medium is oil, however, acrylic and water-based oil is accepted.

**INTERMEDIATE ABSTRACT PAINTING (P-7)**

**JONATHAN LEACH; Intermediate**  
**WEDNESDAY, 9:30 AM – 12:30 PM**  
 July 10 – August 28 (8 weeks)  
 \$260 members / \$295 non-members

This class will focus on creating solid techniques for expressing yourself through abstraction. Student will be encouraged to find a voice through the medium painting, but will not be limited to just basic painting techniques. We will find the best way to accomplish the goals of each artist in class, through their own forms of expression. This class is recommended for anyone who has already taken a beginning painting class and wants to continue to explore this almost limitless medium.

**OIL PAINTING: THE EASY METHOD (P-8)**

**RUBEN COY; All Levels**  
**WEDNESDAY, 1:00 PM – 4:00 PM**  
 July 10 – August 28 (8 weeks)  
 \$260 members / \$295 non-members

**OIL PAINTING: THE EASY METHOD (P-9)**

**RUBEN COY; All Levels**  
**WEDNESDAY, 6:30 PM – 9:30 PM**  
 July 10 – August 28 (8 weeks)  
 \$260 members / \$295 non-members

In this modern method we use oil over acrylic paint. The painting progresses in layers, first in layers of acrylic followed by layers in oil. The simplicity of this method makes this class ideal for the beginner and a boost for the advanced student. Using this layering technique gives the student the leverage to create fine-tuned paintings. The finished paintings have a unique luminosity and a sense of depth.

**LEARN TO PAINT YOUR PET AND MORE (P-10)**

**KERMIT EISENHUT; All Levels**  
**THURSDAY, 9:30 AM – 12:30 PM**  
 July 11 – August 29 (8 weeks)  
 \$260 members / \$295 non-members

Learn how to create your own pet portrait and more, from initial sketches to final paintings. Kermit, recognized for his stylized pet portraits, will help you use charcoal to outline the pet image and finish with colorful acrylics. Using a favorite photo of your pet (or even that of a friend's for a fun birthday or holiday surprise!), you can design the portrait, whether whimsical, realistic, or serious, and add backgrounds.

**LANDSCAPE PAINTING (P-11)**

**STEVE PARKER; Intermediate to Advanced**  
**THURSDAY, 1:00 PM – 4:00 PM**  
 July 11 – August 29 (8 weeks)  
 \$260 members / \$295 non-members

This class is recommended for intermediate and advanced students and/or a continuation of Landscape into Art. The instructor will demonstrate and discuss techniques used in landscape painting in the first class session. Painting and making studies on site is essential in creating a convincing and expressive landscape. Outdoor painting will not be required during summer semester. Primary medium is oil, however, acrylic and water-based media is accepted.

**DIRECT PAINTING (P-12)**

**STEVE PARKER; All Levels**  
**SATURDAY, 9:30 AM – 12:30 PM**  
 July 13 – August 31 (8 weeks)  
 \$260 members / \$295 non-members + \$8 materials fee

This class is based on direct observation and rendering of the effect of light on the subject. The instructor will demonstrate and discuss various techniques used by past and present masters of the genre. Beginners will be encouraged to start with drawing and work into painting. Primary medium is oil, however, acrylic and water-based oil is accepted.

**watercolor**

**STILL LIFE IN WATERCOLOR (W-1)**

**ANNE J. REGAN; All Levels**  
**MONDAY, 1:00 – 4:00 PM**  
**JULY 8 – AUGUST 26 (8 weeks)**  
 \$260 members / \$295 non-members

In this course, students will create complex still lifes with the simple elegance of watercolor. By using a variety of source material, from traditional arrangements to meaningful objects from your own home, we will learn to compose and arrange elements into dynamic, flowing compositions. We will also explore other water-based media like gouache and watercolor pencil to give extra depth to the works created. All levels, beginner to advanced, are encouraged to join.

**PORTRAITS IN WATERCOLOR (W-2)**

**ANNE J. REGAN; All Levels**  
**TUESDAY, 6:30 – 9:30 PM**  
**JULY 9 – AUGUST 27 (8 weeks)**  
 \$260 members / \$295 non-members

Learn to render faces and figures with the ease and luminosity of watercolor. By focusing on color and line weight we will explore simple ways to render noses, eyes and mouths while also encapsulating the spirit of our subjects. Gouache, watercolor pencil and graphite will also be explored to occasionally add additional focus to our portraits. All levels, beginner to advanced, are encouraged to join.

**BEGINNING WATERCOLOR AND GOUACHE (W-3)**

**ANNE J. REGAN; All Levels**  
**THURSDAY, 6:30 – 9:30 PM**  
**JULY 11 – AUGUST 29 (8 weeks)**  
 \$260 members / \$295 non-members

This course will explore the interactions of varying water based media. We will work to create balanced images with the transparent fluidity of watercolor and the flat opaqueness of gouache. Emphasis will be placed on the interaction of color, composition and texture to create both representational and abstract works. All levels, beginner to advanced, are encouraged to join.

## workshops

### **NARRATIVE JEWELRY WORKSHOP (WK-1)**

**ANN RUSH; All Levels**  
**MONDAY, 6:30 – 9:30 PM**  
**July 8 - 29 (4 weeks)**  
**\$155 + \$10 lab fee**

Participants will create jewelry that is symbolic and stunning using found objects, keepsakes, fibers, wire, beads, and other items. These objects will be incorporated into jewelry pieces using a variety of methods taught in class. A partial list of techniques includes: resin casting, die cutting, patina preservation, cold connections, and soldering. Best of all, participants need NO previous experience or knowledge! This class will “re-purpose” or “up-cycle” unused items and create accessories that tell a story, carry a message, or just add some fun.

### **ENVIRONMENTALLY FRIENDLY JEWELRY WORKSHOP: GREEN ETCHING (WK-2)**

**ANN RUSH; All Levels**  
**TUESDAY, 6:30 – 9:30 PM**  
**July 9 – 30 (4 weeks)**  
**\$155 + \$20 lab fee**

This class is the green etching of copper (and silver) and will include complete instructions that describe the equipment set-up, the materials, and the techniques to be used. This method of metal etching involves no acids and all materials are completely reclaimable (no waste). The “laser printer” method of resist will also be demonstrated (a must see). No previous jewelry or metal experience is required.

### **HAND BUILT TABLEWARE WORKSHOP (WK-3)**

**JESSICA KREUTTER; All Levels**  
**MONDAY, 6:30 – 9:30 PM**  
**July 8 – 29 (4 weeks)**  
**\$155 + \$40 lab/materials fee**

We will delve into the very basics of clay hand construction to make original tableware. Using molds, slab and coil techniques, we will make bowls, plates and mugs. We will cover surfaces techniques using bisque press molds, stamps and colored slip.

### **GRAPHIC NOVELS FOR TEENS (WK-4)**

**ANNE J. REGAN; All Levels**  
**TUESDAY, 1:00 – 4:00 PM**  
**JULY 9 – AUGUST 13 (6 weeks)**  
**\$195**

In this course, teens (ages 14-18) will create their own series of comics or a graphic novel. We will focus on storytelling, narrative drawing and the creation of a personal visual language. Varying mediums will be encouraged. All levels, beginner to advanced, superhero comic lover to experimental art comic kid, are encouraged to join.

### **BEGINNING PORTRAITURE IN PASTELS WORKSHOP (WK-5)**

**KELLY ALISON; All Levels**  
**WEDNESDAY, 1:00 – 4:00 PM**  
**July 10 – August 31 (6 weeks)**  
**\$155 + \$model fee**

This six week course will cover how to paint portraits in pastels from a live model. Students will learn how to draw accurate proportions of the head and how to interpret value relationships to develop likeness and form. The class will study the work of Degas, Toulouse Lautrec, and Francisco Clemente. There will be weekly, easy to follow along, demonstrations that will be tailored to the beginning student while more experienced students will be encouraged to further develop their own personal style.

### **COLOR MIXING AND APPLICATION IN OILS WORKSHOP (WK-6)**

**KELLY ALISON; All Levels**  
**THURSDAY, 9:30 AM – 12:30 PM**  
**July 11 – August 1 (4 weeks)**  
**\$155**

This is a four week class that will cover in detail color theory and application along with essential knowledge about mixing a huge variety of colors with a basic oil painting palette. Students will create a painting each week using the techniques of analogous, contrasting, saturated and non-saturated schemes. Weekly demonstrations will be simple enough for the beginner to follow along as more advanced students will be encouraged to develop their own variations on each weekly theme. If you have ever wanted to be totally confident about your choices and ability to control color, this is the class for you.

### **OIL PAINTING TECHNIQUES WORKSHOP (WK-7)**

**STEVEN HOOK; All Levels**  
**SATURDAY, July 13, 1:00 – 5:00 PM**  
**\$65 + \$40 materials fee**

This class teaches students to use basic and advanced painting techniques such as mixing mediums and building canvases. Although students will be encouraged to paint in class, the focus of this course will be to use new mediums (linseed oil, poppy oil, cold wax, etc.) in painting practice as well as painting preparation (stretching canvas, using gesso and sizes). Additionally this course will explore different painting applications including direct and indirect painting methods. Examples of: grinding paints and tubing them, making and using linseed oils and different ways of constructing and preparing canvas. Materials fees covers pigments, oils and mediums for grinding paint, as well as other materials.

### **PEOPLE PAINTING WORKSHOP (WK-8)**

**CAROLINE GRAHAM; All Levels**  
**FRIDAY, AUGUST 23, SATURDAY, AUGUST 24, and SUNDAY, AUGUST 25, 9:30 AM – 3:30 PM**  
**\$215**

“Jump start” your ability to portray the individual. Using your choice of media – acrylics, watercolors, gouache, oils, or pastels – learn to work from the photograph as a starting point for informal portraits and figures. Bring photos of your favorite figures and learn what to put in and especially what to leave out. Many additional sources will be provided by the instructor.

### **CUTTLEFISHBONE CASTING INTENSIVE (WK-9)**

**MARY ROGERS; Intermediate and Advanced**  
**MONDAY, 6:30 – 9:30 PM**  
**August 5 – August 26 (4 Weeks)**  
**\$155 + \$35 lab fee**

This is an introduction to the process of cuttlefishbone casting, a method of gravity casting. Cuttlefishbone is an organic material that is soft enough to carve creating a negative mold. Once the mold is cut, and both sides are marked for alignment, a sprue channel is cut into the material and molten sterling is poured into the negative area. The texture of the bone is very organic. Once the casting is complete it can be cut, filed, and soldered to create a distinctive piece of jewelry.

This class requires some basic jewelry skills such as sawing, filing, and basic torch skills. Students will be casting in sterling silver and will need 2-3 ounces of sterling scrap or casting grain. (See supply list for additional items required.)

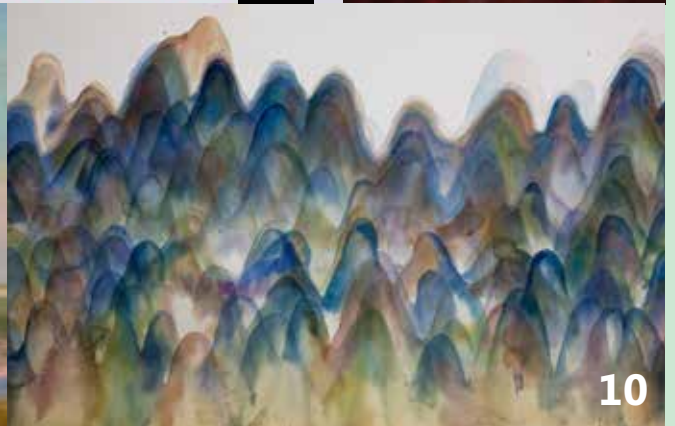
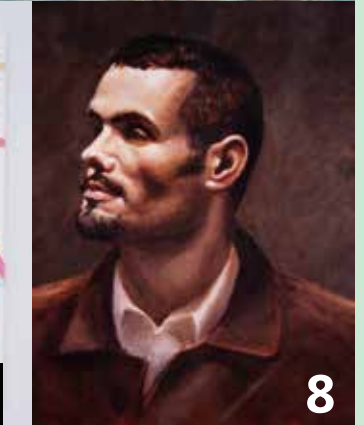
Please note: For safety reasons while casting all students must wear leather shoes or substantial tennis shoes, no sandals or flip flops.

### **ENVIRONMENTALLY FRIENDLY JEWELRY WORKSHOP: A NEW TWIST ON SILVER CLAY (WK-10)**

**ANN RUSH; All Levels**  
**TUESDAY, 6:30 – 9:30 PM**  
**AUGUST 6 – 27 (4 weeks)**  
**\$155 + \$15 lab fee**

Silver clays are formed from reclaimed silver and organic substances to create a “clay-like” texture. The metal clay is then shaped and fired into jewelry and other objects. This session will focus on the many uses of the metal clay extruder, new types of beads and the carving of specific shapes. No previous jewelry or metal experience is required.

# Art League Instructors



Kelly Alison 1 Ruben Coy 2 Kermit Eisenhut 3 Caroline Graham 4 Steven Hook 5 Jessica Kreutter 6 Jonathan Leach 7 Polly Liu 8 Steve Parker 9 Preetika Rajgariah 10 Anne J. Regan 11 Mary Rogers 12 Ann Rush 13

# Summer 2013 Registration and Membership Form

## ART LEAGUE HOUSTON POLICIES

- Art League Houston reserves the right to relocate, combine or reschedule classes, or adjust tuition and fees as needed.
- Art League Houston reserves the right to change class instructors when necessary.
- Art League Houston reserves the right to refuse enrollment to participants with a history of unacceptable behavior.
- If it is necessary for art league houston to cancel a class for any reason, all registered participants will be informed as soon as possible and art league houston will extend the opportunity to receive a credit or transfer to another class.
- Unless stated otherwise, all classes recommended for ages 17 and up.
- Credit must be used one year from date issued.
- Tuition for classes will not be pro-rated.

## TO REGISTER BY PHONE CALL 713-523-9530

Enrollments are not accepted without payment in full. Checks, cash, credit cards (American Express, Discover, Master Card, and Visa) and gift certificates are accepted.

## DISCOUNTS FOR MEMBERS

Members of Art League Houston receive a tuition discount on classes and workshops for one year from the date their membership is purchased.

## ADDITIONAL FEES

- Some courses may require additional fees paid to Art League Houston or collected the first day of class by instructor. These fees are stated in the class schedule, and may include, but are not limited to, supplies, model fees, and equipment maintenance.
- Students are responsible for purchasing their own materials unless otherwise stated. Materials list will be sent to students upon registration.
- Students registering after the expressed registration deadline will be charged a non-refundable, late registration fee of \$15.00.

## WITHDRAWAL & REFUNDS

- The first \$60 of class tuition is a registration fee and will not be refunded, unless Art League Houston cancels the class.
- Membership fees are non-refundable.
- Refunds or credits will only be issued for students that officially withdraw before the first scheduled class meeting.
- Credits are non-transferable and must be used within one year from date of issue.
- Notice of withdrawal must be completed on the Art League Houston drop form which can be emailed or picked up at our offices. Call 713-523-9530 to obtain a drop form.
- Failure to attend sessions or verbal notification will not be regarded as an official notice of withdrawal. Our drop form must be completed in full and returned to the office before the first scheduled day of class.
- Refunds will be processed after the second week of classes has been completed. A refund check will be mailed to you within four weeks from this time.
- No refunds or credits will be given after the first class meets.

## RETURN FORM BY:

MAIL/ DROP OFF: 1953 Montrose Blvd. Houston, TX 77006 FAX: 713-523-4053 PHONE: 713-523-9530

## REGISTER BEFORE 5 PM ON JUNE 15 TO SAVE \$25/CLASS!

pre-reg: June 3 – 8 **SPRING STUDENTS ONLY**  
 early reg: June 10 – 15 **\$25 savings!**  
 gen reg: June 17 – 29  
 late reg: begins July 1 **\$15 late fee**

First time enrolling? \_\_\_\_\_ How did you hear about us? \_\_\_\_\_  
 Name \_\_\_\_\_  
 Street \_\_\_\_\_  
 City \_\_\_\_\_ State \_\_\_\_\_ Zip Code \_\_\_\_\_ Phone \_\_\_\_\_  
 Email \_\_\_\_\_

Course Title	Course Code	Day / Time	Tuition	Materials/Lab Fees
_____	_____	_____	\$ _____	\$ _____
_____	_____	_____	\$ _____	\$ _____
_____	_____	_____	\$ _____	\$ _____
_____	_____	_____	\$ _____	\$ _____

Subtotal	\$ _____
Late fee (\$15)	\$ _____
Membership	\$ _____
Discount (\$25)	\$ _____
Would you like to donate to the Gertrude Barnstone Scholarship Fund? (see website for more information)	
	\$ _____
<b>TOTAL DUE</b>	<b>\$ _____</b>

**payment method:**  
 check # \_\_\_\_\_ cash payment \$ \_\_\_\_\_  
 mastercard  visa  american express  discover \*security code \_\_\_\_\_  
 card # \_\_\_\_\_ exp. date \_\_\_\_ / \_\_\_\_  
 cardholder \_\_\_\_\_ billing zip \_\_\_\_\_  
**for phone registrations / policies read:** (alh staff initials) \_\_\_\_\_

\_\_\_\_\_ **NEW!** YES, I want to go paperless! Please only send my receipts via email.

\*I agree that I have read and understand the policies above \_\_\_\_\_  
 student signature\*

Office use only: Date paid \_\_\_\_\_ Total paid \$ \_\_\_\_\_ Received by (initial) \_\_\_\_\_ Memb. Expires on: \_\_\_\_ / \_\_\_\_ / \_\_\_\_

**Did you know Art League Houston spends nearly \$10,000 a year on credit card processing fees?**  
 Please help ALH by paying in cash or check when possible!



**GALLERY HOURS**

Tuesday – Friday from 9 AM – 5 PM  
Saturday from 12 – 5 PM

[www.ArtLeagueHOUSTON.org](http://www.ArtLeagueHOUSTON.org)

Art League Houston is a 501(c)(3) nonprofit charitable organization.

**FUNDERS**

The Art League is funded by a grant from the City of Houston through the Houston Arts Alliance and is supported in part by a grant from the Texas Commission on the Arts.

Art League Houston acknowledges the following private foundations, public funders, and corporations for their support this season: Art Colony Association, Inc., Asakura Robinson Company, Axiom, Bank of River Oaks, The Brown Foundation, CenterPoint Energy, Inc., CHEVRON, ExxonMobil Foundation, Felvis Foundation, Gainer Donnelly, Houston, Endowment, Inc., Kinder Morgan Foundation, Krewe of Olympus-Texas, Inc., Lone Star Chapter of the National Multiple Sclerosis Association, John P. McGovern Foundation, Saint Arnold Brewing Company, Target, Susan Vaughan Foundation, The Vaughn Foundation, The Wachovia Wells Fargo Foundation, and the Wortham Foundation, Inc.

Art League Houston also wishes to thank its many generous individual members and donors for their support.

**membership benefit**  
**OPEN FIGURE STUDIO WITH LIVE MODEL**

**\$10 FOR 3 HOURS**  
**1:00 – 4:00 PM**  
**THURSDAY, SATURDAY, SUNDAY**

**REGISTRATION**

Email: [artleague@ArtLeagueHOUSTON.org](mailto:artleague@ArtLeagueHOUSTON.org)  
Fax: 713-523-4053  
US Mail: 1953 Monstrose, Houston, TX 77007  
In-Person: Montrose @ Bomar

**FOR QUESTIONS**

Phone: 713-523-9530

Nonprofit Org  
US Postage  
paid  
Houston, TX  
Permit No 8909

**join art league houston**  
**DISCOUNTS ON ALL CLASSES**  
**OPEN FIGURE STUDIO**  
**INVITATIONS TO EVENTS AND OPENINGS**

**TEXAS art SUPPLY**

*Three Locations to Serve You:*

2001 Montrose Blvd.  
Houston, TX 77006  
T: 713-526-5221  
F: 713-524-7474

2237 South Voss  
Houston, TX 77057  
T: 713-780-0440  
F: 713-977-4704

1507 Baybrook Mall Dr.  
Houston, TX 77546  
T: 281-486-9320  
F: 281-486-1633

*Visit us online:*  
[www.texasart.com](http://www.texasart.com)

WINSOR & NEWTON™

Liquitex®

pebeo

GRUMBACHER®  
an american tradition™

HOLBEIN  
ARTISTS COLORS

REMBRANDT

DALER-ROWNEY