

A close-up photograph of a hand holding a paintbrush, applying bright blue paint to a canvas. The canvas already has some abstract shapes in orange and purple. The background is a soft, out-of-focus gradient of green and yellow.

a r t
leaguehouston

make **ART** happen
Spring **2012** Classes and Workshops

Upcoming Exhibitions

February 10 – March 2

Project Gallery

whARTon nARraTives

March 9 – April 27

Main Gallery

Baroque on the Border

Rigoberto A. Gonzalez

Art League Houston is excited to present *Baroque on the Border*, a series of paintings by Mexican-American artist Rigoberto A. Gonzalez that portray the violent confrontations between drug cartels, Mexican federal troops, and people involved in undocumented immigration, in the artist's home town of Reynosa; a border city in the northern part of Mexico.

Opening Reception

Artist Talk at 6:30 PM.

Friday, March 9, 6 – 9 PM at Art League Houston

"Understanding the Violence along the U.S. Mexico Border: The Historical and Societal Context of Contemporary Realities"

Panel Discussion and Satellite Exhibition

Saturday, March 10, 1:30 – 3:00 PM. at Talento Bilingüe de Houston
333 S. Jensen Dr., Houston, Texas 77003

Using the paintings of Rigoberto A. Gonzalez as a jumping off point, this panel will examine the history and the societal context of the violence in Mexico, particularly along the country's Northern border.

BAROQUE PAINTING DEMONSTRATION

MAIN GALLERY ARTIST RIGOBERTO A. GONZALEZ

SUNDAY, 1:30 – 3:30 P.M.

MARCH 11 (1 DAY)

\$10 members/\$15 non-members

Go behind the scenes with Mexican-American master painter Rigoberto A. Gonzalez and find out how he creates his powerful baroque styles paintings in a two-hour demonstration by the artist.

"Representing Violence along the U.S. Mexico Border: Artists Grapple with Contemporary Issues through Art"

Panel Discussion

Monday, March 12, 6 PM. at Art League Houston

The discussion will begin with a 30-minute artist talk by Rigoberto A. Gonzalez, and open up into a panel discussion about how and why artists have grappled with issues of cultural violence and crisis through the beauty of art both historically and in the contemporary moment.

March 9 – April 27

Project Gallery

TIE-BREAKER

Roberta Stokes

Art League Houston presents *TIE-BREAKER*, an exhibition of textile works by Roberta Stokes, one of the key founders of modern dance in Houston. Embarking on a new career in the visual arts, Stokes created a series of playful paintings and collages that have been made from over three hundred and fifty recycled ties.

Opening Reception

Artist Talk at 7 PM.

Friday, March 9, 6 – 9 PM at Art League Houston

MAKING ART FROM TIES DEMONSTRATION

PROJECT GALLERY ARTIST ROBERTA STOKES

SUNDAY, 2 – 4 P.M.

APRIL 15 (1 DAY)

\$10 members/\$15 non-members

Go behind the scenes with Houston-based artist Roberta Stokes, and find out how she created the unique series of tie-based works for *TIE-BREAKER* on view in the Art League Project Gallery March 9 – April 27, 2012.

May 4 – May 11

Main Gallery

Marty: Spring Sale & Benefit

Art League will be closed Memorial Day, Monday, May 28

Registration Calendar

pre-reg: Feb 20 – 25 WINTER STUDENTS ONLY

early reg: Feb 27 – March 10 \$25 savings!

gen reg: March 12 – 24

late reg: begins March 26 \$15 late fee

All classes are limited to 12 students. Classes are for students ages 17 and older, unless instructor consent is given. All classes have a recommended list of materials which students are responsible for purchasing. Lab fees do not include materials.



Kids Studio
2012
Summer
Art Camps

Art League's Kids Studio Summer Art Camps Winter Camp provide children with creative, fun ways to engage their imaginations through visual art activities. Each one-week session is thematic in nature and taught by one of Art League Houston's outstanding teaching artists. As kids create art, they will explore ideas, learn arts vocabulary, and experiment with a variety of arts media. They will reinforce skills such as problem solving, observation, and cooperation while fostering confidence and creativity. Most of all, they will have fun!

CAMP FEES per week, per child

Early Bird (FEBRUARY 20 – MARCH 5): \$200 Art League Household Members

General (MARCH 6 – MAY 31): \$200 Art League Household Members / \$235 Non-Members

Late (AFTER MAY 31): \$225 Art League Household Members / \$260 Non-Members

Optional Early And Late Care: per week, per child \$100 (9 am – 4 pm, with camp instruction from 10 am – 3 pm)

WEEKLY CAMP SESSIONS

AGES 5–8

June 11 – 15

June 18 – 22

June 25 – 29

July 9 – 13

July 16 – 20

July 23 – 27

AGES 9 – 12

June 18 – 22

June 25 – 29

To register or for more information contact us at 713-523-9530

drawing workshop

BREAKING BAROQUE: DRAWING WORKSHOP (DWK-1) *NEW*

LUCINDA COBLEY; All Levels

SATURDAY, APRIL 7; 1:00 P.M. - 4:00 P.M.

\$90 + \$16 materials fee

Intense contrast from light to dark (chiaroscuro) and sensuality of line characterizes drawings from the Baroque era (1600-1750). In response to Rigoberto Gonzalez's contemporary take on Baroque, this workshop will breakdown components of drawing. Studies will focus on experimental mark making and dramatic composition, using studio made inks, utilizing everyday objects, lit dramatically, in order to convey an ominous feeling.

drawing

CLASSICAL FIGURE DRAWING (D-1)

POLLY LIU; Intermediate

TUESDAY, 9:00 A.M. TO 12:00 P.M.

APRIL 3 – JUNE 5 (10 WEEKS)

\$310 members / \$345 non-members + \$model fee

In this class, students are introduced to the French Atelier training to draw the human figure. The method of "sight size," a fundamental scale system, is used to reproduce the figure accurately. Students work from a live model focusing on outline, proportion, shadow, shape and value. Model fee is due the first day of class, and the fee varies by class size.

DRAWING FUNDAMENTALS II (D-2)

ARMANDO RODRIGUEZ; Intermediate

TUESDAY, 9:30 A.M. TO 12:30 P.M.

APRIL 3 – JUNE 5 (10 WEEKS)

\$310 members / \$345 non-members

This class is a continuation of the principles learned in Drawing Fundamentals I. Students will be introduced to more complex forms and different mediums to achieve the desired effects. This is open to students that have some drawing experience that want to expand their visual vocabulary and technical skill.

DRAWING / SEEING THE WORLD WITH ACCURACY (D-3)

WHITNEY RILEY; All Levels

WEDNESDAY, 9:30 A.M. TO 12:30 P.M.

APRIL 4 – JUNE 6 (10 WEEKS)

\$310 members / \$345 non-members

This class will focus on drawing from observation, using measuring techniques for accuracy and building engaging compositions. Using pencil, charcoal and dry pastel the students will progressively build their skills in visual perception and representation. Following the principle that everyone can learn to draw, as everyone can learn to read, this course is designed to build skills quickly, with intense instruction. In the spirit of Drawing/Seeing the World with Accuracy, we will have several classes where we leave the classroom to draw at various sites in Houston.

DRAWING FUNDAMENTALS I (D-4)

ARMANDO RODRIGUEZ; All Levels

WEDNESDAY, 6:30 P.M. TO 9:30 P.M.

APRIL 4 – JUNE 6 (10 WEEKS)

\$310 members / \$345 non-members

Before we learn to write, we learn to draw. Students will observe and translate three-dimensional forms into two-dimensional drawings, starting with simple line exercises, simple forms and progressing to more complex organic forms. Students will build skill levels in composition and line quality through the use of tone, light and shadow, and the development of visual awareness and discrimination.

FIGURE DRAWING (D-5)

CHOLLA; All Levels

THURSDAY, 9:30 A.M. TO 12:30 P.M.

APRIL 5 - JUNE 7 (10 WEEKS)

\$310 members / \$345 non-members + \$model fee

"Anyone can draw good figures following the simple steps I've learned over the years that work. You'll surprise yourself after even one semester," says Cholla. Students will be put at ease with figure studies and will teach students how to "build" an accurate and beautiful drawing. Students will learn how to use quick gestures with a progression toward longer pencil drawings. Halfway through the quarter, students move on to working in charcoal. The model fee is due the first day of class, and the fee varies by class size.

jewelry workshops

METAL CLAY: UNSCRIPTED STUDIO (JWK-1) *NEW*

ANN RUSH; All Levels

SATURDAY, 11:00 A.M. – 4:00 P.M.

APRIL 21

\$150 per workshop + \$15 lab fee (per workshop)

METAL CLAY: UNSCRIPTED STUDIO (JWK-2) *NEW*

ANN RUSH; All Levels

SATURDAY, 11:00 A.M. – 4:00 P.M.

MAY 5

\$150 + \$15 lab fee (per workshop)

Unscripted studio offers a wonderful opportunity for participants to complete unfinished projects and develop new projects. This workshop offers participants 5 hours to work, design and sharpen skills, while taking advantage of the Jewelry studio and the guidance of Senior Instructor, Ann Rush. While this workshop is geared for those with experience with metal clay, there will be room for a few beginners. All participants must follow instructor guidelines and instructions regarding safety, and equipment usage.

PLASTIC CASTING FOR JEWELERS (JWK-3) *NEW*

LESLIE SHERSHOW; All Levels

SATURDAY, 1:00 P.M. – 4:00 P.M.

APRIL 7, APRIL 14, & APRIL 28 (THREE DAYS)

\$125 + \$33 materials fee (for all three workshop sessions)

In this workshop, you will learn how to create inexpensive, fun, and original jewelry in multiple colors! We will begin by using an oven-bake clay to create an original model that will be reproduced multiple times in plastic. This piece may be a ring, pendant, bracelet, or other form. When the model is completed, students will be individually instructed in making a simple mold of this object. Once the mold has cured, we will then use a fast-setting two-part plastic to fill the mold, creating multiples in a variety of colors. You will learn to finish your plastic pieces to be worn or incorporated into a piece of jewelry! No previous jewelry/metalsmithing experience is necessary.

RIVETING RIVETS AND COLD CONNECTIONS (JWK-4) *NEW*

LESLIE SHERSHOW; All Levels

SATURDAY, 1:00 P.M. – 4:00 P.M.

MAY 12 & MAY 19 (TWO DAYS)

\$100 + \$25 materials fee (for both workshop sessions)

Rivets and cold connections are key in creating jewelry that incorporates non-traditional materials such as plastic, wood, leather, and other found objects. Rivets may also be used as a design element, or to create movement in a jewelry piece. In this workshop, students will learn the processes in order to produce a variety of rivets, such as blind rivets, flush rivets, and tube rivets. Other cold connections will be instructed, including tabs, staples, and quick linkage solutions. This workshop will consist of step-by-step instruction, as well as handouts, and individual attention on problem solving for that piece you can't quite figure out! Please bring found objects in which you would like to incorporate into a piece of jewelry. Previous metalsmithing experience is recommended, but not necessary.

jewelry

JEWELRY: BEGINNING THROUGH ADVANCED (J-1)
MARY ROGERS; All Levels
MONDAY, 6:30 P.M. TO 9:30 P.M.
APRIL 2 – MARCH 12 (8 WEEKS)
\$260 members / \$295 non-members + \$25 lab fee

This class covers jewelry construction techniques including: piercing, drilling, soldering, riveting, forging, reticulation, and roller printing, as well as hydraulic forming. Advanced topics may include granulation, jewelry rendering, and blanking. In this class there is a strong emphasis on problem solving helps students develop a personal design vocabulary, while the multi-level class allows new students to see a variety of advanced techniques and applications. Individualized instruction allows students to progress at their own pace.

CONSTRUCTING JEWELRY WITH METAL CLAY: FUNDAMENTALS AND INTERMEDIATE (J-2) *NEW*

ANN RUSH; All Levels
TUESDAY, 1:00 P.M. TO 4:00 P.M.
APRIL 3 – JUNE 5 (10 WEEKS)
\$310 members / \$345 non-members + \$25 lab fee

This class is open to all regardless of their experience level, or lack thereof, with jewelry-making, Art Clay Silver or any other metal clays. For those who are new to metal clay, projects will be offered that will teach basic techniques. These students will have the opportunity to complete 4-5 pieces of jewelry. For students with more experience, technique-based instruction will be offered, allowing each student to create work of his/her own design. Please note: Due to time constraints, this class will focus on silver clay, rather than base metal clays. As this class involves working with a products made from precious metals, it is wise to consider the cost of materials. Generally, each project will consume a minimum of 7 to 10 grams of Art Clay Silver.

JEWELRY IN METAL CLAY: THE FUNDAMENTALS (J-3)

ANN RUSH; All Levels
TUESDAY, 6:00 P.M. TO 9:00 P.M.
APRIL 3 – JUNE 5 (10 WEEKS)
\$310 members / \$345 non-members + \$25 lab fee

This class is designed to introduce students to the basic techniques for creating jewelry from Art Clay Silver and to empower them to continue creating beyond the classroom. Art Clay Silver allows artists to create (.999) silver jewelry using techniques that differ from traditional metal work techniques. Students will have the opportunity to make 5 or more pieces of jewelry during the session. As the precious metal market has been quite volatile, prospective students should thoroughly research the costs of Art Clay Products prior to starting the class.

JEWELRY IN METAL CLAY: BEYOND THE BASICS (J-4)

ANN RUSH; Intermediate to Advanced
THURSDAY, 6:00 P.M. TO 9:00 P.M.
APRIL 5 – JUNE 7 (10 WEEKS)
\$310 members / \$345 non-members + \$25 lab fee

This course is designed for students who have a strong working knowledge of metal clay techniques. Previous experience with metal clay is a must. Students will be working to develop and construct jewelry of their own designs and learning advanced techniques. Techniques involving base metal clays will be discussed and investigated. In addition, the combination of metal clay and traditional metal smith techniques will be utilized.

mixed media

COLLAGE: ASSEMBLING ART (MM-1)
ARMANDO RODRIGUEZ; All Levels
TUESDAY, 6:30 P.M. TO 9:30 P.M.
APRIL 3 – JUNE 5 (10 WEEKS)
\$310 members / \$345 non-members

COLLAGE: ASSEMBLING ART (MM-2)
ARMANDO RODRIGUEZ; All Levels
WEDNESDAY, 9:30 A.M. TO 12:30 P.M.
APRIL 4 – JUNE 6 (10 WEEKS)
\$310 members / \$345 non-members

Collage is an ancient art that was used by calligraphers in 10th century Japan, visible in the gold-leafed panels in European cathedrals of the 15th and 16th century, and used in the 19th century. Picasso and Braque began to use the technique, and collage flourished as an artistic practice. In this class we will use the medium as a means of personal expression, utilizing mixed media to accomplish our goals.

PRINTMAKING: FOCUS ON MONOTYPE (MM-3)
ARMANDO RODRIGUEZ; All Levels
THURSDAY, 9:30 A.M. TO 12:30 P.M.
APRIL 5 – JUNE 7 (10 WEEKS)
\$310 members / \$345 non-members

Become acquainted with one of the most painterly methods among all of the printmaking techniques. Monoprints and monotypes are essentially printed paintings. Although images can be similar, editioning is not possible—no two images can be exactly the same. The Monotype process creates a translucency and a quality of light very different from a painting on paper or a print. There is beauty in its spontaneity and combination of printmaking, painting and drawing.

painting workshop

BREAKING BAROQUE: PAINTING WORKSHOP (PWK-2) *NEW*
LUCINDA COBLEY; All Levels
SATURDAY, APRIL 14; 1:00 P.M. - 4:00 P.M.
\$90 + \$16 materials fee

Baroque painting emphasizes drama with dark shadows and intense light (chiaroscuro) and typically utilizes a limited palette of colors, a key element in the contemporary paintings of Rigoberto Gonzalez. In this workshop will be a focus on making studio made paints with traditional and modern pigments and then making studies of everyday objects to explore exaggerated composition in rich deep colors.

painting

BEGINNING PAINTING (P-1)
EMILY SLOAN; All Levels
SATURDAY, 9:30 A.M. TO 12:30 P.M.
APRIL 7 – JUNE 9 (10 WEEKS)
\$310 members / \$345 non-members + \$10 materials fee

This fun, hands-on class will focus on the basics of learning how to paint from the ground up. Students will learn how to put together interesting compositions, "sketch" with paint and build on their work to form finished paintings. Through both guided and self-directed projects, students will explore how different types of paint, application techniques and supplies function in order to enhance their work.

FUNDAMENTALS OF OIL PAINTING (P-2)
CHOLLA; All Levels
TUESDAY, 9:30 A.M. TO 12:30 P.M.
APRIL 3 – JUNE 5 (10 WEEKS)
\$310 members / \$345 non-members + \$10 materials fee

This course involves a careful examination of every component of oil painting, including its characteristics and variables. Students will learn the basic physical and chemical aspects of painting media. Students will slowly be introduced to contemporary uses of materials and techniques as they review and experiment with classical oil painting methods.

CLASSICAL PORTRAIT PAINTING IN OIL (P-3)

POLLY LIU; Intermediate to Advanced
TUESDAY, 12:30 P.M. TO 3:30 P.M.
APRIL 3 – JUNE 5 (10 WEEKS)
\$310 members / \$345 non-members + \$model fee

In this class, students begin painting in "Grisaille" - painting executed entirely in monochrome and usually in shades of grey or brown - to eliminate the problems of color and value and to concentrate on accuracy of drawing and the effects of light on the figure. The second part of the class utilizes a limited palette, allowing students to explore and understand the harmony and unity of light. This class is for intermediate to advanced students. Model fee is due the first day of class, and the fee varies by class size.

LANDSCAPE INTO ART (P-4)

STEVE PARKER; All Levels
TUESDAY, 6:30 P.M. TO 9:30 P.M.
APRIL 3 – JUNE 5 (10 WEEKS)
\$310 members / \$345 non-members

In this class, students learn the essentials of utilizing memory and personal experience to express something interesting and compelling about their subject. Practicing this method, students achieve a unique sense of abstraction, and will see their subject with fresh perspective. The instructor will offer techniques and specific methods to guide students through various technical concerns during painting sessions. Students will be introduced to different oil media and their effective use. The class includes informal lectures ranging from painting methods to texts on the inspiration.

PAINTING THE FIGURE (P-5)

CHOLLA; All Levels
WEDNESDAY, 9:30 A.M. TO 12:30 P.M.
APRIL 4 – JUNE 6 (10 WEEKS)
\$310 members / \$345 non-members + \$model fee

Cholla says, "It helps to have taken a figure drawing class, but paint is very forgiving. You can approach the figure with realism or simply as a pattern of colors and shapes. The human body has been represented in every way imaginable – nothing inspires me more." This class teaches students how to "build" an accurate and beautiful figure painting with oils. Students explore their own strengths and returning students are guided towards developing an individual style and building a cohesive body of work. Model fee is due the first day of class, and the fee varies by class size.

DIRECT PAINTING (P-6)

STEVE PARKER; All Levels
WEDNESDAY, 9:30 A.M. - 12:30 P.M.
APRIL 4 – JUNE 6 (10 WEEKS)
\$310 members / \$345 non-members + \$10 materials fee

This class is based on direct observation and rendering of the light effect on the subject. The instructor will demonstrate and discuss various techniques used by past and present masters of the genre. Beginners will be encouraged to start with drawing and work into painting.

OIL PAINTING: THE EASY METHOD (P-7)

RUBEN COY; All Levels
WEDNESDAY, 1:00 P.M. TO 4:00 P.M.
APRIL 4 – JUNE 6 (10 WEEKS)
\$310 members / \$345 non-members

OIL PAINTING: THE EASY METHOD (P-8)

RUBEN COY; All Levels
WEDNESDAY, 6:30 P.M. TO 9:30 P.M.
APRIL 4 – JUNE 6 (10 WEEKS)
\$310 members / \$345 non-members

In this modern method students learn to use oil over acrylic paint. The painting progresses in layers, first in layers of acrylic followed by layers in oil. The simplicity of this method makes this class ideal for the beginner and a boost for the advanced student. Using this

technique creates finished paintings with a unique luminosity and a sense of depth. Painting in acrylic only is recommended for the extreme beginner in order to learn layering more quickly. After understanding the basics of layering, the student may progress to oils.

INDOOR / OUTDOOR LANDSCAPE (P-9)

STEVE PARKER; All Levels
THURSDAY, 1:00 P.M. TO 4:00 P.M.
APRIL 5 – JUNE 7 (10 WEEKS)
\$310 members / \$345 non-members

INDOOR / OUTDOOR LANDSCAPE (P-10)

STEVE PARKER; All Levels
SATURDAY, 10:00 A.M. TO 1:00 P.M.
APRIL 7 – JUNE 9 (10 WEEKS)
\$310 members / \$345 non-members

In this class, the instructor will give demonstrations and lead discussions, both in class and during outdoor painting sessions. Learning to make paintings and studies on site is essential to creating a more convincing and expressive landscape. Painting locations will be selected by class consensus. Weather permitting, class will meet outdoors during at least four sessions.

PET PORTRAITS AND MORE (P-11)

KERMIT EISENHUT; All Levels
SATURDAY, 9:30 A.M. – 12:30 P.M.
APRIL 7 – JUNE 9 (10 WEEKS)
\$310 members / \$345 non-members

Learn how to create your own pet portrait and more, from initial sketch to final painting. Kermit, who is recognized for his stylized pet portraits, will help you use charcoal to outline the pet image and finish the painting with colorful acrylics. Using a favorite photo of your pet (or even that of a friend's for a fun birthday or holiday surprise!), you can design the portrait, whether whimsical, realistic, or serious, and add optional backgrounds. Even those pets that have passed can be "brought back to life" in a cherished painting to affectionately remember them. Join this fun class and tap into your artistic talent while painting a light-hearted portrait of your favorite animal.

watercolor

WATERCOLOR (W-1)

CAROLINE GRAHAM; All Levels
MONDAY, 1:00 P.M. TO 4:00 P.M.
APRIL 2 – JUNE 4 (10 WEEKS)
\$310 members / \$345 non-members

WATERCOLOR (W-2)

CAROLINE GRAHAM; All Levels
WEDNESDAY, 6:30 P.M. TO 9:30 P.M.
APRIL 4 – JUNE 6 (10 WEEKS)
\$310 members / \$345 non-members

Explore the vibrancy and transparency of this medium. The instructor will emphasize color, design, and contrast. Students will learn to layer and control the pigment, rescue the white paper and still have a spontaneous, fresh-looking result.

REBEL WATERCOLOR (W-3)

CHOLLA; All Levels
WEDNESDAY, 6:30 P.M. TO 9:30 P.M.
APRIL 4 – JUNE 6 (10 WEEKS)
\$310 members / \$345 non-members + \$model fee

In this class, the instructor teaches unconventional methods for the application of paint to achieve maximum vibrancy. The instructor will show students how to break the traditional rules of watercolor by varying thickness, adding gouache and lifting color, letting the water do the work. Students will learn to embrace watercolor in a fun and relaxed atmosphere. A more detailed supply list will be provided after the first day of class. Model fee is due the first day of class, and the fee varies by class size.

Art League Instructors



1



2



3



4



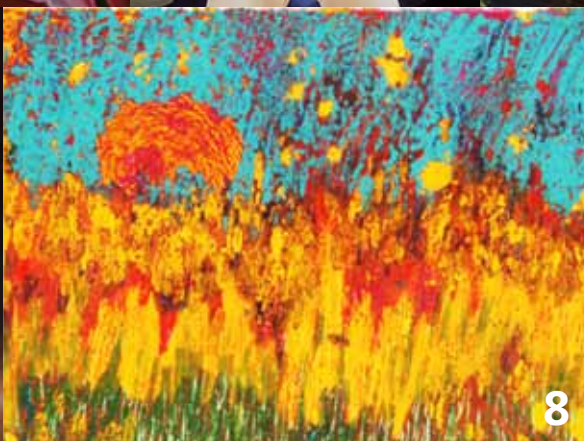
5



6



7



8



9



10



11



12



13

Steve Parker 1 Cholla 2 Kelly Alison 3 Emily Sloan 4 Whitney Riley 5 Ruben Coy 6 Polly Liu 7 Armando Rodriguez 8 Mary Rogers 9 Ann Rush 10 Kermit Eisenhut 11 Lucinda Cobby 12 Caroline Graham 13

Spring 2012 Registration and Membership Form

ART LEAGUE HOUSTON POLICIES

- Art League Houston reserves the right to relocate, combine or reschedule classes, or adjust tuition and fees as needed.
- Art League Houston reserves the right to change class instructors when necessary.
- Art League Houston reserves the right to refuse enrollment to participants with a history of unacceptable behavior.
- If it is necessary for art league houston to cancel a class for any reason, all registered participants will be informed as soon as possible and art league houston will extend the opportunity to receive a credit or transfer to another class.
- Unless stated otherwise, all classes recommended for ages 17 and up.
- Credit must be used one year from date issued.
- Tuition for classes will not be pro-rated.

TO REGISTER BY PHONE CALL 713-523-9530

Enrollments are not accepted without payment in full. checks, cash, credit cards (American Express, Discover, Master Card, and Visa) and gift certificates are accepted.

DISCOUNTS FOR MEMBERS

Members of Art League Houston receive a tuition discount on classes and workshops for one year from the date their membership is purchased.

ADDITIONAL FEES

- Some courses may require additional fees paid to Art League Houston or collected the first day of class by instructor. These fees are stated in the class schedule, and may include, but are not limited to, supplies, model fees, and equipment maintenance.
- Students registering after the expressed registration deadline will be charged a non-refundable, late registration fee of \$15.00.

WITHDRAWAL & REFUNDS

- The first \$60 of class tuition is a registration fee and will not be refunded, unless Art League Houston cancels the class.
- Membership fees are non-refundable.
- Refunds or credits will only be issued for students that officially withdraw before the first scheduled class meeting.
- Credits are non-transferable and must be used within one year from date of issue.
- Notice of withdrawal must be completed on the Art League Houston drop form which can be emailed or picked up at our offices. Call 713-523-9530 to obtain a drop form.
- Failure to attend sessions or verbal notification will not be regarded as an official notice of withdrawal. Our drop form must be completed in full and returned to the office before the first scheduled day of class.
- Refunds will be processed after the second week of classes has been completed. A refund check will be mailed to you within four weeks from this time.
- No refunds or credits will be given after the first class meets.

RETURN FORM BY:

MAIL/ DROP OFF: 1953 Montrose Blvd. Houston, Tx 77006 FAX: 713-523-4053 PHONE: 713-523-9530

REGISTER BEFORE 5PM ON MARCH 10 TO SAVE \$25/CLASS!

First time enrolling? _____ How did you hear about us? _____

Name _____

Street _____

City _____ State _____ Zip Code _____ Cell Phone _____

Email _____

pre-reg: Feb 20 – 25 Winter Students Only
early reg: Feb 27 – March 10 \$25 savings!
gen reg: March 12 – 24
late reg: begins March 26 \$15 late fee

Course Title	Course Code	Day / Time	Tuition	Materials/Lab Fees
_____	_____	_____	\$ _____	\$ _____
_____	_____	_____	\$ _____	\$ _____
_____	_____	_____	\$ _____	\$ _____
_____	_____	_____	\$ _____	\$ _____

Subtotal	\$ _____
Late fee (\$15)	\$ _____
Membership	\$ _____
Discount (\$25)	\$ _____
TOTAL DUE	\$ _____

payment method:

check # _____ cash payment \$ _____

mastercard visa american express discover *security code _____

card # _____ exp. date _____ / _____

cardholder _____ billing zip _____

for phone registrations / policies read: (alh staff initials) _____

_____ **NEW!** YES, I want to go paperless! Please only send my receipts via email.

***I agree that I have read and understand the policies above** _____
student signature*

Office use only: Date paid _____ Total paid \$ _____ Received by (initial) _____ Memb. Expires on: _____ / _____ / _____

Did you know Art League Houston spends nearly \$10,000 a year on credit card processing fees?
Please help ALH by paying in cash or check when possible!



REGISTRATION

Email: artleague@ArtLeagueHOUSTON.org
Fax: (713) 523-4053
US Mail: 1953 Montrose, Houston, TX 77007
In-Person: Montrose @ Bomar

FOR QUESTIONS

Phone: (713) 523-9530

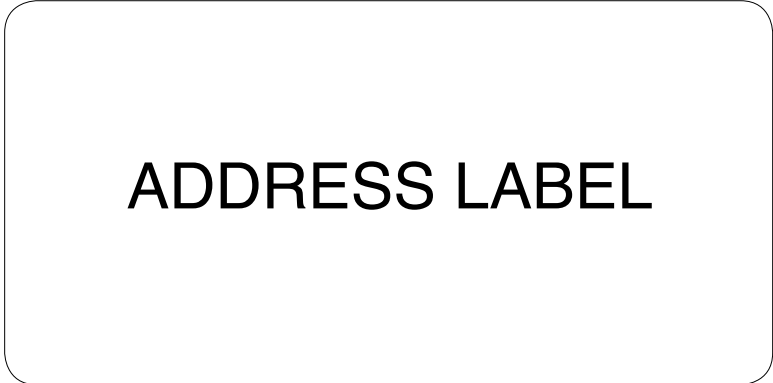
Nonprofit Org
US Postage
paid
Houston, TX
Permit No 8909

GALLERY AND OFFICE HOURS
Monday - Friday from 9am-5pm
Saturday from 11am-5pm
www.ArtLeagueHOUSTON.org

Art League Houston is a 501(c)(3) nonprofit charitable organization.

STAFF

Jennifer Ash, Exhibitions Manager
Janet Grantham, Finance
Erin Murphy, School Manager
Jill Nepomnick, Membership



membership benefit
OPEN FIGURE STUDIO WITH LIVE MODEL

\$10 FOR 3 HOURS
1:00 - 4:00 P.M.
THURSDAY, SATURDAY, SUNDAY

join art league houston
DISCOUNTS ON ALL CLASSES
OPEN FIGURE STUDIO
INVITATIONS TO EVENTS AND OPENINGS

TEXAS art SUPPLY

Three Locations to Serve You:

2001 Montrose Blvd.
Houston, TX 77006
T: 713-526-5221
F: 713-524-7474

2237 South Voss
Houston, TX 77057
T: 713-780-0440
F: 713-977-4704

1507 Baybrook Mall Dr.
Houston, TX 77546
T: 281-486-9320
F: 281-486-1633

Visit us online:
www.texasart.com

WINSOR & NEWTON[™]

Liquitex[®]

pebeo

GRUMBACHER[®]
an american tradition[™]

HOLBEIN
ARTISTS COLORS

REMBRANDT

DALER-ROWNEY