



a r t
leaguehouston

FALL 2010

SCHEDULE OF ART CLASSES & PROGRAMS

UPCOMING EXHIBITIONS

Cockroach Poems

Joseph Havel

September 2-October 15, 2010

ALH Main Gallery

2010 Texas Artist of the Year

Jillian Conrad and Jeff Forster

September 2-October 15, 2010

ALH Project Gallery

Gambol

Juried Members Exhibition-juror Miranda Lash

November 19-December 17, 2010

ALH Main & Project Galleries

Images: *Empty Dream Songs*, detail, Joseph Havel

NEWS & CALENDAR

NEW SCHOOL MANAGER

If you see a new face around our halls, it may be Meredith Massar, the new school manager at Art League Houston. Born here in Houston, Meredith grew up in Clemson, South Carolina, and Tyler, Texas. She completed a Bachelor of Arts degree in art history and studio art at Baylor University and a Master of Arts degree in art history at Texas Christian University. In addition to a passion for sharing her love of art with others, Meredith also brings experience from three Texas museums, Baylor's Martin Museum of Art, the Dallas Museum of Art, and Fort Worth's Kimbell Art Museum. She is excited to join the Houston art community. Please join us in welcoming her to our staff.



GAMBOL

2010 JURIED MEMBERS EXHIBITION

Juror **Miranda Lash** is the **Curator of Contemporary and Modern Art at the Museum of Art in New Orleans**. There is a **\$1,000 cash award for first place, \$500 for second, and \$250 for third place**. Opening reception is Friday, November 19, 2010.

There is no submission fee for ALH members who joined after Nov. 1, 2009. Non-members may pay a \$35 submission fee and become a member! No restrictions on size or media. Artwork drop off dates coming soon. For details call 713-523-9530.



ART.SOCIAL

FOR GROWN UPS ONLY

Open a bottle of wine and let your creativity flow while you create your own masterpiece with one of Art League Houston's outstanding teaching artists! Great for absolute beginners and experienced artists alike, in this class you will produce works of high quality to take home at the end of the evening. Come alone or with friends and bring your beverage of choice. **We provide everything else, including glasses, bottle openers, and your artistic materials.** There is a refrigerator on site to keep your drinks cold. Sign up for one, two, or all sessions! Each class will have a different instructor and project. Details to follow.

Time: 6:30 P.M. – 9:30 P.M.

Thursday class dates:

(AS-1) **Sept. 30**, (AS-2) **Oct. 21**, (AS-3) **Nov.11**, or (AS-4) **Dec. 2**

Friday class dates:

(AS-5) **Sept. 24**, (AS-6) **Oct. 8**, (AS-7) **Nov. 5**, or (AS-8) **Dec. 3**

Tuition PER SESSION is \$35 members / \$45 non-members. Price includes supplies. Space is limited to 28 per session, so call us today to register! To register or for more information contact us at 713-523-9530.



EXTRAORDINARY

A FREE ART WORKSHOP FOR FAMILIES SPONSORED BY TARGET

Attention parents and children! On **Saturday, September 25, 2010**, Art League Houston will host **EXTRAORDINARY**, its latest **ArtBound!** event for families. **EXTRAORDINARY** is a fun, **FREE family art workshop** for parents and children (ages 5 to 12) where participants will make extraordinary sculptures using ordinary objects.

Workshop time slots: 10:00 A.M., 11:00 A.M., 1:00 P.M., and 2:00 P.M.

While the workshop is free, reservations are required. For more information, call Art League at 713-523-9530 or e-mail linda@artleaguehouston.org.

KIDS STUDIO

CLASSES- NEW THIS SEMESTER!



SQUIGGLE AND BLOT:

PARTNERS IN ART (KS-1)

For a **3 - 5 year old** and a favorite grown up. During each class we will look at works of art, read a theme-related book, and use the learned concepts to create original works of art. This class encourages active participation and interaction between the adults and children, giving parents the tools to integrate art into daily conversations. Children will develop their fine motor skills and creativity while having fun learning and making art!

Wednesdays: 10:30 A.M. – 12:00 P.M.

Fall Semester Dates: Sept. 22, Oct. 6, Oct. 20, Nov. 3, Nov. 17, & Dec. 1.

Tuition: per semester (6 classes) \$120 members / \$150 non-members.

Class limited to 14 pairs. To register or for more information contact us at 713-523-9530.

LITTLE HANDS, BIG ART! (KS-2)

For a **1 - 3 year old** and a favorite grown up. We will experiment with sensory elements such as color and texture while your child explores the world of art. This age-appropriate art class encourages your child's creativity and imagination while you work and play together.

Wednesdays: 10:30 A.M. – 11:30 A.M.

Fall Semester Dates: Sept. 29, Oct. 13, Oct. 27, and Nov. 10.

Tuition: per semester (4 classes) \$80 members / \$100 non-members.

Class limited to 14 pairs. To register or for more information contact us at 713-523-9530.

WINTER CAMP

Winter Camp at Art League Houston's **Kids Studio** provides children with creative, fun ways to engage their imaginations through visual art activities. Each session is taught by one of Art League Houston's outstanding teaching artists. Instructors will reinforce critical thinking skills while fostering confidence and creativity. As kids create art, they will explore ideas, learn arts vocabulary, and experiment with a variety of arts media---but, most of all, **they will have fun!**

DATES: Dec. 20-22, 2010

Tuition PER THREE-DAY SESSION per student is \$100 member / \$120 non-member. If your child attends both morning and afternoon sessions, tuition is \$200 member / \$240 non-member.

Price includes supplies. Space is limited to 14 per session, so call us today to reserve your spot! To register or for more information contact us at 713-523-9530.

Camp Times:

(KS - C1) Session 1: 9:00 A.M. to noon, ages 5 - 8

(KS - C2) Session 2: 1:00 P.M. to 4:00 P.M., ages 5 - 8

(KS - C3) Session 3: 9:00 A.M. to noon, ages 9 - 12

(KS - C4) Session 4: 1:00 P.M. to 4:00 P.M., ages 9 - 12

ART CLASSES

REGISTRATION CALENDAR

2010 FALL SEMESTER CLASSES:

September 20 – December 4 (10 weeks)

PRE-REG:	Opens August 16 - 21 <i>summer students only</i>
EARLY REG:	Opens August 23 – September 4 <i>\$25 savings</i>
GEN REG:	Opens September 7 – September 11
LATE REG:	begins September 13 <i>\$15 late fee</i>

WORKSHOPS

HOW PICASSO GOT HIS GROOVE BACK (WK-1) All Levels

CHERIE RAY

SATURDAY, OCTOBER 9, 9:00 A.M. TO 1:00 P.M. (4 HOUR CLASS)

\$90 members / \$125 non-members + \$15 materials

Are you an artist seeking vitality in your work or a novice with a longing to create? If so, this is the workshop for you. Intuitive Painting is a “process-based” exploration into the creative process. This process evokes a deeper connection to your limitless creativity. In this critique-free studio, you will leave inspired and renewed. No experience is necessary.

JEWELRY

JEWELRY: BEGINNING THROUGH ADVANCED (J-1) All Levels

MARY ROGERS

MONDAY, 6:30 TO 9:30 P.M.

SEPTEMBER 20 – NOVEMBER 29 (10 WEEKS)

\$310 members / \$345 non-members + \$35 lab fee

This is an opportunity for intensive development of jewelry skills for beginning and advanced students. Students will learn jewelry construction techniques including: piercing, drilling, soldering, riveting, forging, reticulation, embossing by hand with the roller mill, traditional and non-traditional bezel setting, and hydraulic forming. Advanced topics may include granulation, jewelry rendering, and blanking. Through individualized instruction, each student progresses at his or her own pace while developing a personalized design aesthetic. Advanced students may work on projects of their choice with instructor approval. Discussion of basic tools, procedures, and studio safety will be covered.

JEWELRY IN METAL CLAY: THE FUNDAMENTALS (J-2) All Levels

ANN RUSH

TUESDAY, 6:00 TO 9:00 P.M.

SEPTEMBER 21 – NOVEMBER 30 (10 WEEKS)

\$310 members / \$345 non-members + \$25 lab fee

Learn all the basic techniques for making jewelry using art clay silver and art clay copper. Both art clay silver and art clay copper are metal clays derived from reclaimed precious metals, organic binders and water. The resulting “clay” is really a pliable form of pure precious metal that provides artists with the ability to construct, to carve, and to sculpt beautiful pieces of pure silver and pure copper jewelry. As this class teaches participants how to create jewelry from precious metals, the cost of materials is more expensive than that of painting, beading, or ceramic courses. Students can expect to make between 5 and 10 pieces of finished jewelry while learning the following techniques: rolling, texturing, shaping, green ware finishing, firing, final finishing, and patination. The building of three-dimensional shapes, ring construction, bezel setting, and many more. Each technique is taught with a written project guide. Students are encouraged to develop their own designs while learning these techniques. The goal of the class is to inspire and empower students to create jewelry of their own designs.

All classes are limited to 12 students unless noted otherwise. All classes have a recommended list of supplies, unless noted otherwise, to be sent upon registration.

ADVANCED JEWELRY IN METAL CLAY

(J-3) Intermediate to Advanced

ANN RUSH

THURSDAY, 6:00 TO 9:00 P.M.

SEPTEMBER 23 – DECEMBER 2 (10 WEEKS)

\$310 members / \$345 non-members + \$25 lab fee

This course is designed for students who have a strong working knowledge of metal clay techniques. Previous experience with metal clay is a must. Students will be working to develop and construct jewelry of their own design and learning new techniques to further augment their work. Techniques covered include: the addition of gold accents using the Keum-boo method and using gold paste or gold metal clay, enamel, resin, prisma colors, carving, combining silver clay with other metals, combining silver clay with fused glass, ceramics, and other materials, the construction of boxes and other vessels, the use and construction of rivets and hinges and prongs, the use of fire-able stones, and many others. In addition, the combination of traditional metal smith techniques and metal clay techniques will be discussed. As the class progresses, time will be spent helping each student develop and stage construction steps for his or her designs.

MIXED MEDIA

ADVANCED MIXED MEDIA (MM-1) Intermediate to advanced

HEATHER BAUSE

TUESDAY, 6:30 P.M. TO 9:30 P.M.

SEPTEMBER 21 – NOVEMBER 30 (10 WEEKS)

\$310 members / \$345 non-members

This course is designed as a continuation of the Introduction to Mixed Media class or for students with experience working in mixed media. Students will enhance their understanding of a broad range of material surfaces and techniques. Work created in class will focus on furthering fundamental skill sets including: the effective layering of image and paint, the use of drawing within mixed media, and various methods of image transfer. Culmination of the course will result in students creating mixed media pieces that are of import and relevance to each student.

THE PROJECT CLASS (MM-2) All Levels

KELLY ALISON

THURSDAY, 9:30 A.M. TO 12:30 P.M.

SEPTEMBER 23 – DECEMBER 2 (10 WEEKS)

\$310 members / \$345 non-members

This class is for students interested in formulating and executing project ideas. In the format of a creative open studio, students work with the instructor to develop works in a variety of media, such as sculpture, collage, installation, and conceptual art, with an emphasis on eventual public showcase. Students are encouraged to work on their own ideas and / or to collaborate with others in the class. Fun, easygoing, and inspirational.

PRINTMAKING: FOCUS ON MONOTYPE (MM-3), All Levels

ARMANDO RODRIGUEZ

THURSDAY, 9:30 A.M. TO 12:30 P.M.

SEPTEMBER 23 – DECEMBER 2 (10 WEEKS)

\$310 members / \$345 non-members

Become acquainted with one of the most painterly methods among all of the printmaking techniques. Monoprints and monotypes are essentially printed paintings. Although images can be similar, editioning is not possible—no two images can be exactly the same. The Monotype process creates a translucency and a quality of light very different from a painting on paper or a print. There is beauty in its spontaneity and combination of printmaking, painting and drawing.

ART CLASSES

MIXED MEDIA continued

INTRODUCTION TO MIXED MEDIA (MM-4) All Levels
HEATHER BAUSE

THURSDAY, 6:30 P.M. TO 9:30 P.M.

SEPTEMBER 23 - DECEMBER 2 (10 WEEKS)

\$310 members / \$345 non-members

Students of the Mixed Media class will learn the history of collage art, from masters to contemporary artists. Students will also learn the basics in mixed media composition, techniques involved in contemporary work, and how to assemble and create original artworks of their own. Work created in class will focus on building fundamental skill sets including: the effective layering of image and paint, the use of drawing within mixed media, and various methods of image transfer. Culmination of the course will result in students creating mixed media pieces that are of import and relevance to each student.

DRAWING

BASIC DRAWING AND COMPOSITION (D-1) All levels
POLLY LIU

MONDAY, 9:00 A.M. TO 12:00 P.M.

SEPTEMBER 20 - NOVEMBER 29 (10 WEEKS)

\$310 members / \$345 non-members

Students are introduced to the classical style of drawing and composition. Students will develop a comprehension of the elements of art and the principles of design including the use of movement and rhythm, proportion, balance, unity, and variety. Students will learn basic drawing methods such as contour and gesture, as well as shading techniques and one point perspective.

DRAWING FUNDAMENTALS (D-2) All Levels
ARMANDO RODRIGUEZ

MONDAY, 9:30 A.M. TO 12:30 P.M.

SEPTEMBER 20 - NOVEMBER 29 (10 WEEKS)

\$310 members / \$345 non-members

Before we learn to write, we learn to draw. In this class we will concentrate in relearning this basic human instinct. We will observe and translate three-dimensional forms into two-dimensional drawings, Starting with simple line exercises, simple forms and progressing to more complex organic forms. Students will build skill levels in composition and line quality through the use of tone, light and shadow, and the development of visual awareness and discrimination.

CLASSICAL FIGURE DRAWING (D-3) Intermediate
POLLY LIU

TUESDAY, 9:00 A.M. TO 12:00 P.M.

SEPTEMBER 21 - NOVEMBER 30 (10 WEEKS)

\$310 members / \$345 non-members + \$ model fee

Model fee due first day of class, fee varies by class size. Students are introduced to the French Atelier training to draw the human figure. The method of "sight size," a fundamental scale system, is used to reproduce the figure accurately. Students work from a live model focusing on outline, proportion, shadow, shape, and value.

DRAWING / SEEING THE WORLD WITH ACCURACY (D-4) All Levels
SASHA DELA

WEDNESDAY, 9:30 A.M. TO 12:30 P.M.

SEPTEMBER 22 - DECEMBER 1 (10 WEEKS)

\$310 members / \$345 non-members + \$ materials

This class will focus on drawing from observation, using measuring techniques for accuracy and building engaging compositions. Students will use pencil and charcoal, adding in dry pastel later in the class. This course will allow the students to progressively build their skills in visual perception and representation. Following the principal that everyone can learn to draw, as everyone can learn to read, this course is designed to build skills quickly, with intense instruction. If you can follow instruction, you will progress quickly. In the spirit of Drawing/Seeing the World with

continued

Accuracy, we will have several classes where we leave the classroom to draw at various sites in Houston. Students will receive the supply list on the first day of class, and will be required to purchase new materials as the semester goes on. Estimated budget for supplies is between \$75-100.

FIGURE DRAWING (D-5) All Levels

HAGIT BARKAI

THURSDAY, 6:30 P.M. TO 9:30 P.M.

SEPTEMBER 23 - DECEMBER 2 (10 WEEKS)

\$310 members / \$345 non-members + \$ model fee

Model fee due first day of class, fee varies by class size. This course is intended to provide the student with the technical information necessary to draw the human figure convincingly in various positions. This is an essential course for any student who is interested in transitioning from drawing to painting in oils/acrylics or pastels, and those who seek to understand the role of the figure in traditional and contemporary art. Exercises are designed to stimulate seeing the figure in its entirety and apply methods of measurement that allow the student to manipulate the visual information with knowledge and confidence.

WATERCOLOR

WATERCOLOR (W-1) All Levels

CAROLINE GRAHAM

MONDAY, 1:00 P.M. TO 4:00 P.M.

SEPTEMBER 20 - NOVEMBER 29 (10 WEEKS)

\$310 members / \$345 non-members

WATERCOLOR (W-2) All Levels

CAROLINE GRAHAM

WEDNESDAY, 6:30 P.M. TO 9:30 P.M.

SEPTEMBER 22 - DECEMBER 1 (10 WEEKS)

\$310 members / \$345 non-members

Explore the vibrancy and transparency of this medium. Instructor will emphasize color, design, and contrast. Students will learn to layer and control the pigment, rescue the white paper and still have a spontaneous, fresh-looking result.

FIGURE IN WATERCOLOR (W-3) All Levels

CHOLLA

THURSDAY, 9:30 A.M. TO 12:30 P.M.

SEPTEMBER 23 - DECEMBER 2 (10 WEEKS)

\$310 members / \$345 non-members + \$ model fee

Model fee due first day of class, fee varies by class size. Students will be put at ease with figure studies as they learn to "build" an accurate and beautiful watercolor painting working directly from a live model. Students will work from draped models and clothed models. This course will provide and demonstrate key ways to develop each student's watercolor techniques. Through the fun and relaxed atmosphere of this course, students will gain knowledge, understanding, and tools which will enable them to improve the accuracy of their work.

PAINTING

MEET AND GREET YOUR MUSE (P-1) All Levels

CHERIE RAY

MONDAY, 9:30 A.M. TO 12:30 P.M.

SEPTEMBER 27 - NOVEMBER 15 (8 WEEKS)

\$260 members / \$295 non-members + \$50 materials

For beginning Creatives and experienced artists seeking inspiration. Intuitive Painting is a process-based course which opens you to your full creative potential. In a critique-free studio, you are encouraged and supported to follow the direction of your muse. Wrapped in the guise of play, the creative process itself becomes your guide. All class materials are provided by the instructor.

BEGINNING PAINTING (P-2) All levels

ANDREA CANALITO

MONDAY, 6:30 P.M. TO 9:30 P.M.

SEPTEMBER 20 - NOVEMBER 29 (10 WEEKS)

\$310 members / \$345 non-members

This fun, hands-on class will focus on the basics of learning how to paint from the ground up. Students will learn how to put together interesting compositions, "sketch" with paint, and build on their work to form finished paintings. Through both guided and self-directed projects, students will explore how different types of paint, application techniques, and supplies function in order to enhance their work.

CONTEMPORARY PORTRAIT AND FIGURE (P-3), All Levels

KELLY ALISON

MONDAY, 6:30 P.M. TO 9:30 P.M.

SEPTEMBER 20 - NOVEMBER 29 (10 WEEKS)

\$310 members / \$345 non-members + \$ model fee + \$60 materials

Model fee due first day of class, fee varies by class size. Working from live portrait and figure models, students will explore the techniques of modern masters like Matisse, Picasso, Khalo, Clemente, Alice Neel, and Chuck Close. Students may bring in their own materials or choose to pay a nominal supply fee to use the instructor's materials. There will be weekly demonstrations and reference material to keep you inspired. Great for beginning and experienced artists alike.

FUNDAMENTALS OF OIL PAINTING (P-4) All Levels

CHOLLA

TUESDAY, 9:30 A.M. TO 12:30 P.M.

SEPTEMBER 21 - NOVEMBER 30 (10 WEEKS)

\$310 members / \$345 non-members + \$5 materials

This course involves a careful examination of every component of oil painting, including its characteristics and variables. Students will learn the basic physical and chemical aspects of the painting mediums. Students will slowly be introduced to contemporary uses of materials and techniques as they review and experiment with classical oil painting methods.

CLASSICAL PORTRAIT PAINTING IN OIL (P-5) Intermediate

POLLY LIU

TUESDAY, 12:30 P.M. TO 3:30 P.M.

SEPTEMBER 21 - NOVEMBER 30 (10 WEEKS)

\$310 members / \$345 non-members + \$ model fee

Model fee due first day of class, fee varies by class size. Students begin painting in "Grisaille" - painting executed entirely in monochrome, usually in shades of grey or brown - to eliminate the problems of color and value and to concentrate on accuracy of drawing and the effects of light on the figure. The second part of the class utilizes a limited palette, allowing students to explore and understand the harmony and unity of light. For intermediate to advanced students.

FIGURE PAINTING (P-6) All Levels

HAGIT BARKAI

TUESDAY, 6:30 P.M. TO 9:30 P.M.

SEPTEMBER 21 - NOVEMBER 30

\$310 members / \$345 non-members + \$ model fee

Model fee due first day of class, fee varies by class size. Students experiment with the classical and contemporary approaches to figure painting. Using live models, students will practice essential principles of painting from observation, such as measuring, achieving tonal balance, mixing colors and building a composition, and will learn how to use them when working from photographs, memory and imagination. Different paintings that deal with the figure will be used in presentations and discussions, from classical realism to contemporary ideas of figurative painting. Students painting in oil, acrylic and color pastels are welcome.

LANDSCAPE INTO ART (P-7) Intermediate

STEVE PARKER

TUESDAY, 6:30 P.M. TO 9:30 P.M.

SEPTEMBER 21 - NOVEMBER 30 (10 WEEKS)

\$310 members / \$345 non-members

Students learn the essentials of utilizing memory and personal experience to express something interesting and compelling about their subject. Practicing this method, students achieve a unique sense of abstraction, and will see their subject with fresh perspective. Instructor will offer techniques and specific methods to guide students through various technical concerns during painting sessions. Students will be introduced to different oil mediums and their effective use. Class includes informal lectures ranging from painting methods to texts on the inspiration and techniques used by celebrated artists. Previous painting experience is recommended

CREATIVE PAINTING (P-8) All Levels

CHOLLA

WEDNESDAY, 9:30 A.M. TO 12:30 P.M.

SEPTEMBER 22 - DECEMBER 1 (10 WEEKS)

\$310 members / \$345 non-members + \$5 materials

Students will learn to transpose and work from photos/sketches. Instructor will cover the seven components of any successful painting including color, composition, and texture. Students may use oil, acrylic, watercolor, pastel, or mixed media. Individual instruction in each material is given as students progress in their preferred style.

OIL PAINTING: THE EASY METHOD (P-9) All Levels

RUBEN COY

WEDNESDAY, 1:00 P.M. TO 4:00 P.M.

SEPTEMBER 22 - DECEMBER 1 (10 WEEKS)

\$310 members / \$345 non-members

OIL PAINTING: THE EASY METHOD (P-10) All Levels

RUBEN COY

WEDNESDAY, 6:30 P.M. TO 9:30 P.M.

SEPTEMBER 22 - DECEMBER 1 (10 WEEKS)

\$310 members / \$345 non-members

In this modern method students learn to use oil over acrylic paint. The painting progresses in layers, first in layers of acrylic followed by layers in oil. The simplicity of this method makes this class ideal for the beginner and a boost for the advanced student. Using this technique creates finished paintings with a unique luminosity and a sense of depth. Painting in acrylic only is recommended for the extreme beginner in order to learn layering more quickly. After understanding the basics of layering, the student may progress to oils.

ABSTRACT PAINTING (P-11) All Levels

KELLY ALISON

WEDNESDAY, 6:30 P.M. TO 9:30 P.M.

SEPTEMBER 22 - DECEMBER 1 (10 WEEKS)

\$310 members / \$345 non-members + \$50 materials

In this fun class, students will experiment with the basics of abstract painting. Looking at work by Kandinsky, Miro, Mondrian, Pollock, de Kooning, Diebenkorn, and Joan Mitchel, there will be a focus on techniques and style. Weekly demonstrations and reference material will inspire you. Great for beginners and experienced artists alike.

INDOOR / OUTDOOR LANDSCAPE (P-12) Intermediate

STEVE PARKER

THURSDAY, 1:00 P.M. TO 4:00 P.M.

SEPTEMBER 23 - DECEMBER 2 (10 WEEKS)

\$310 members / \$345 non-members

Recommended for intermediate students or as a continuation of Landscape into Art. Instructor will give demonstrations and discussion, both in class and during outdoor painting sessions. Learning to make paintings and studies on site is essential to creating a more convincing and expressive landscape. Painting locations will be selected by class consensus. Weather permitting, class will meet outdoors during at least four sessions.

INSTRUCTORS



KELLY ALISON
The Project Class (MM-2)
Contemporary Portrait and Figure (P-3)
Abstract Painting (P-11)



HAGIT BARKAI
Figure Drawing (D-5)
Figure Painting (P-6)



HEATHER BAUSE
Advanced Mixed Media (MM-1)
Introduction to Mixed Media (MM-4)



ANDREA CANALITO
Beginning Painting (P-2)



CHOLLA
Figure in Watercolor (W-3)
Fundamentals of Oil Painting (P-4)
Creative Painting (P-8)



RUBEN COY
Oil Painting: The Easy Method (P-9)
Oil Painting: The Easy Method (P-10)



SASHA DELA
Drawing / Seeing the World with Accuracy (D-4)



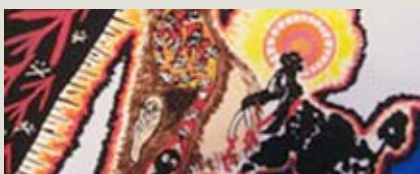
CAROLINE GRAHAM
Watercolor (W-1)
Watercolor (W-2)



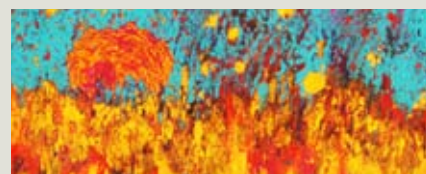
POLLY LIU
Basic Drawing and Composition (D-1)
Classical Figure Drawing (D-3)
Classical Portrait Painting in Oil (P-5)



STEVE PARKER
Landscape into Art (P-7)
Indoor / Outdoor Landscape (P-12)



CHERIE RAY
How Picasso Got His Groove Back (WK-1)
Meet and Greet Your Muse (P-1)



ARMANDO RODRIGUEZ
Printmaking: Focus on Monotype (MM-3)
Drawing Fundamentals (D-2)



MARY ROGERS
Jewelry: Beginning through Advanced (J-1)



ANN RUSH
Jewelry in Metal Clay: The Fundamentals (J-2)
Advanced Jewelry in Metal Clay (J-3)

ALH Policies

Art League Houston reserves the right to combine or reschedule classes, or adjust tuition and fees as needed.

Art League Houston reserves the right to change class instructors when necessary.

Art League Houston reserves the right to refuse enrollment to participants with a history of unacceptable behavior.

If it is necessary for Art League Houston to cancel a class for any reason; all registered participants will be informed as soon as possible and Art League Houston will extend the opportunity to receive a credit or transfer to another class.

Tuition for classes will not be pro-rated.

PAYMENT

Enrollment is not accepted without payment in full. Checks, cash, credit cards (American Express, Discover, Master Card, and Visa) and gift certificates are accepted.

DISCOUNTS

Members of Art League Houston receive a tuition discount on classes and workshops for one year from the date their membership is purchased.

ADDITIONAL FEES

Some courses may require additional fees paid to Art League Houston or collected the first day of class by instructor. These fees are stated in the class schedule, and may include, but are not limited to, supplies, model fees, and equipment maintenance.

TO REGISTER BY PHONE CALL 713-523-9530

Students registering after the expressed registration deadline will be charged a minimum late registration fee of \$15.00.

WITHDRAWAL: CREDIT & REFUNDS

*THE \$60 REGISTRATION FEE IS NON-REFUNDABLE, UNLESS CLASSES ARE CANCELED BY ART LEAGUE HOUSTON.

Membership fees are non-refundable.

Refunds or credits will be issued* for students that officially withdraw before the first scheduled class meeting.

Credits are non-transferable and must be used within one year from date of issue.

Notice of withdrawal must be completed on the Art League Houston drop form which can be emailed or picked up at our offices. Call (713) 523-9530 x103 to obtain a drop form.

Failure to attend sessions or verbal notification will not be regarded as an official notice of withdrawal. Our drop form must be completed in full and returned to the office before the first scheduled day of class.

Refunds will be processed after the second week of classes has been completed. A refund check will be mailed to you no later than two weeks from this time.

NO REFUNDS OR CREDITS WILL BE GIVEN AFTER THE FIRST CLASS MEETS.

RETURN FORM BY: MAIL/DROP OFF: 1953 Montrose Blvd. Houston, TX 77006 **FAX:** (713) 523-4053 **PHONE:** (713) 523-9530

ART LEAGUE HOUSTON FALL 2010 REGISTRATION & MEMBERSHIP FORM

First Time Enrolling

REGISTER BEFORE 5PM ON SEPTEMBER 4 TO SAVE \$25/CLASS! How did you hear about us? _____

NAME _____ EMAIL _____

ADDRESS _____ PHONE _____

CITY _____ STATE _____ ZIPCODE _____ CELL PHONE _____

COURSE TITLE	COURSE CODE	DAY / TIME	TUITION	LAB FEES
	(-)		\$	\$
	(-)		\$	\$
	(-)		\$	\$

PAYMENT METHOD:

Check # _____ Cash Payment \$ _____

Master Card Visa American Express Discover* SECURITY CODE _____

Card # _____ Exp. Date ____/____/____

Cardholder _____ Billing Zip _____

FOR PHONE REGISTRATIONS / POLICIES READ: (ALH STAFF INITIALS) _____

SUBTOTAL	\$
LATE FEE	\$
MEMBERSHIP	\$
DISCOUNT	\$ -
	\$

TOTAL DUE

***I AGREE THAT I HAVE READ AND UNDERSTAND THE POLICIES ABOVE** _____

STUDENT SIGNATURE*

Office Use Only: Date Paid _____ Total Paid \$ _____ Received By (initial) _____ Memb. expires on: ____/____/____

art leaguehouston

GALLERY and OFFICE HOURS

Monday - Friday from 9 A.M. - 5 P.M.

Saturday from 11 A.M. - 5 P.M.

www.artleaguehouston.org

Art League Houston is a 501(c)(3) nonprofit charitable organization.

1953 Montrose Blvd | Houston TX, 77006

Nonprofit Org
US postage
Paid
Houston Texas
permit no 8909

NEED TO PRACTICE? OPEN FIGURE STUDIO

OFFERED TO ALH MEMBERS THREE TIMES A WEEK FOR THREE HOURS
A live model is provided weekly for Art League Houston Members to draw,
sketch or paint. The cost is only \$10 for a (3) hour session. This money offsets
the cost of model and class monitor.

Wednesdays, 6:30-9:30 pm, Thursdays & Saturdays from 1-4pm

TEXAS SUPPLY

Three Locations to Serve You:

2001 Montrose Blvd.
Houston, TX 77006
T: 713-526-5221
F: 713-524-7474

2237 South Voss
Houston, TX 77057
T: 713-780-0440
F: 713-977-4704

1507 Baybrook Mall Dr.
Houston, TX 77546
T: 281-486-9320
F: 281-486-1633

Visit us online:
www.texasart.com



WINSOR & NEWTON™

Liquitex®

pebeo

GRUMBACHER®
an american tradition™



HOLBEIN
ARTISTS COLORS

REMBRANDT

