

**JESSEE FISH**

ART DIRECTOR +  
ILLUSTRATOR



**ILLUSTRATION**  
PORTFOLIO

# BRAND WORK





TEARAWAY VALENTINE CARDS FOR HARPER WILDE





TEARAWAY VALENTINE CARDS FOR HARPER WILDE





SILK SCARF DESIGN FOR HARPER WILDE







HARPER WILDE

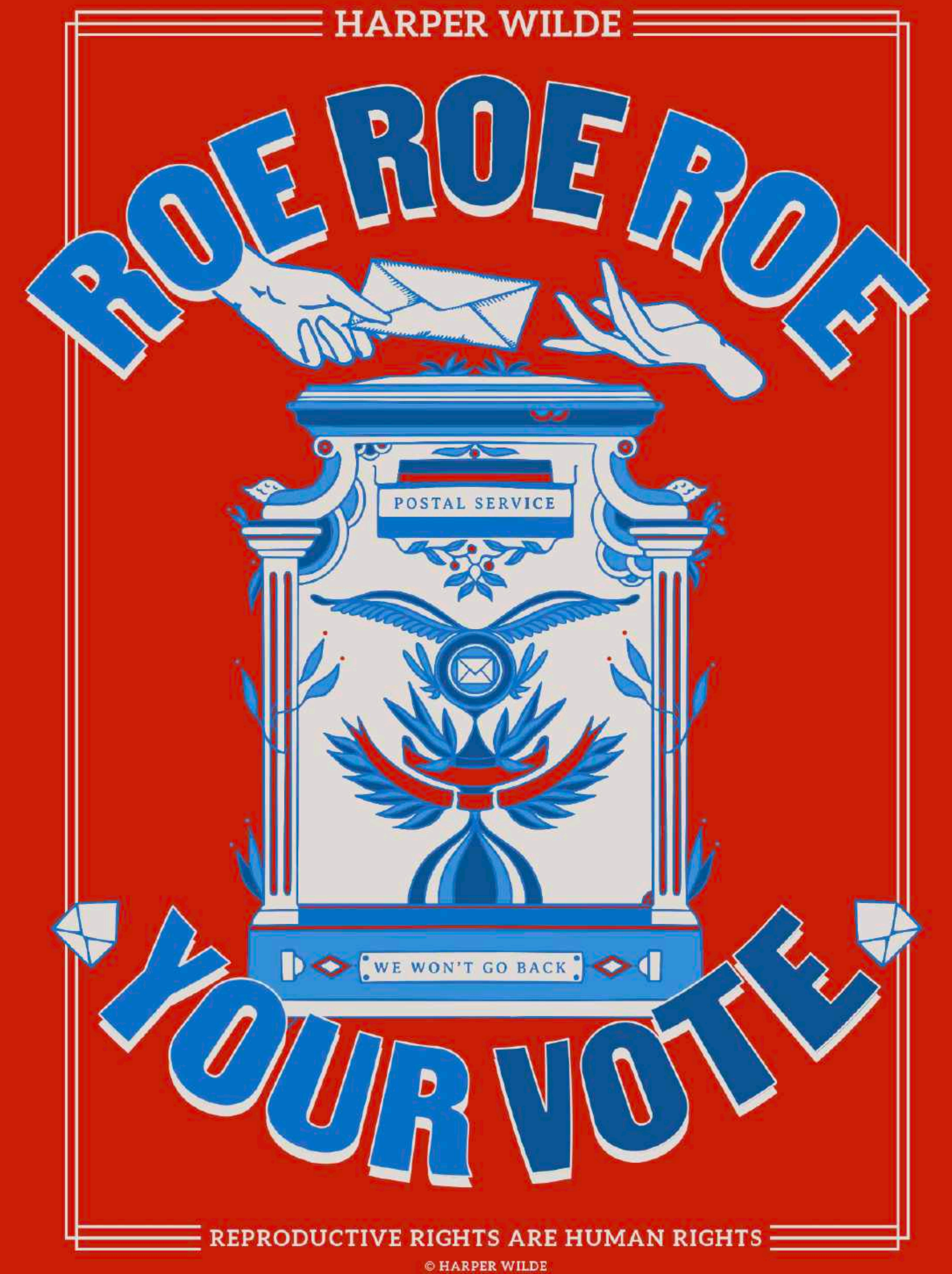


CUSTOM STICKER SHEET FOR HARPER WILDE





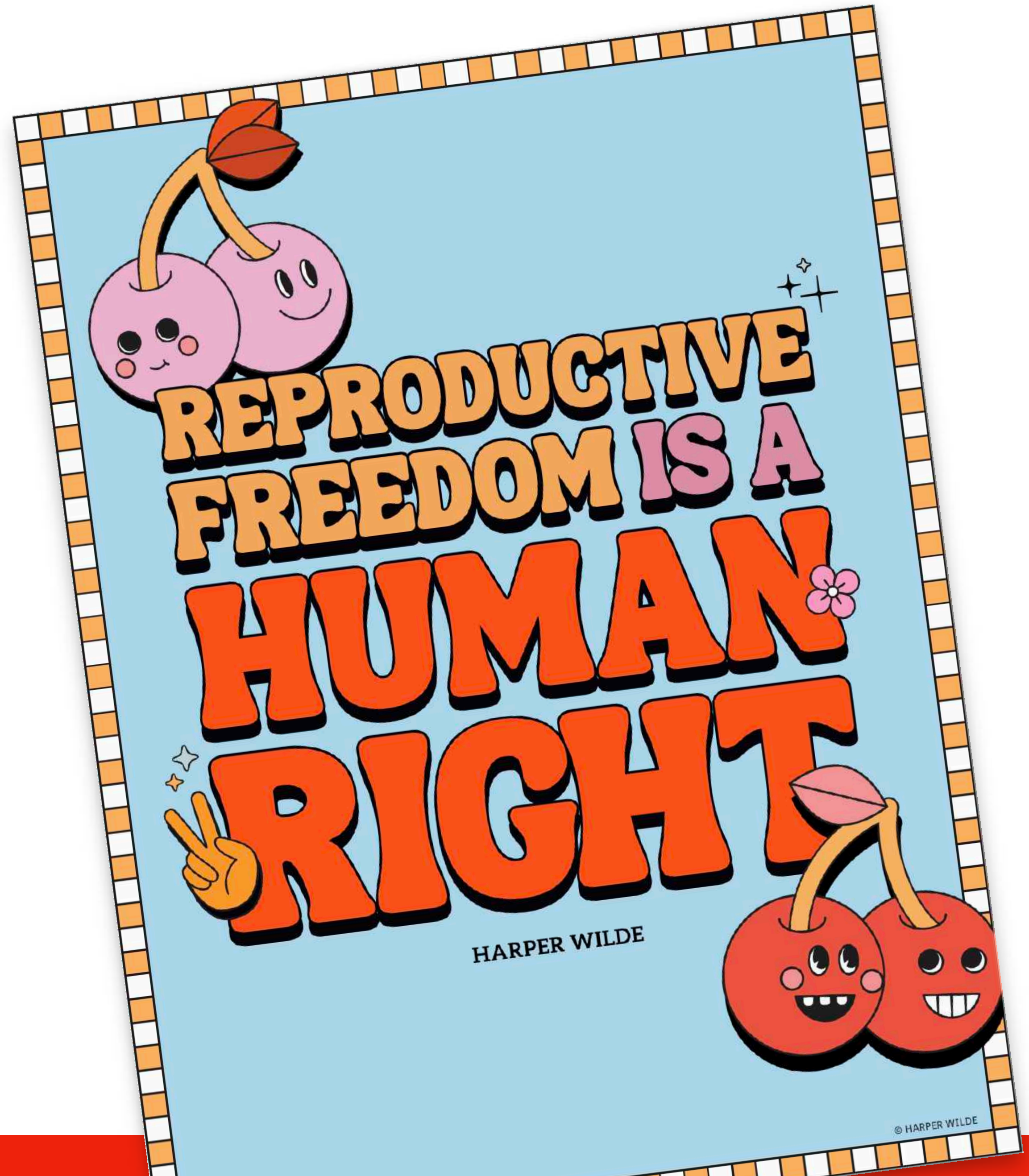
APPAREL FOR HARPER WILDE



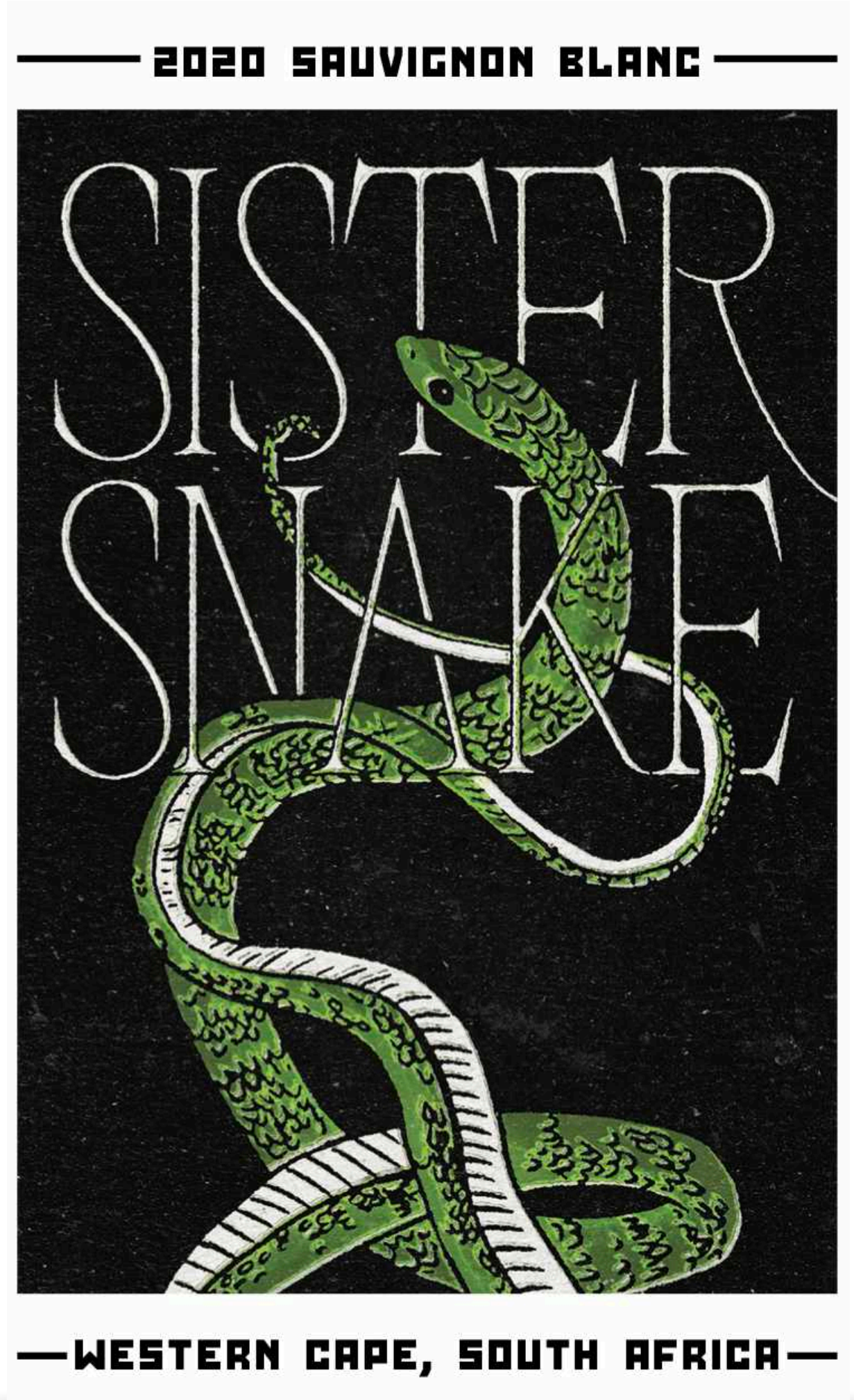
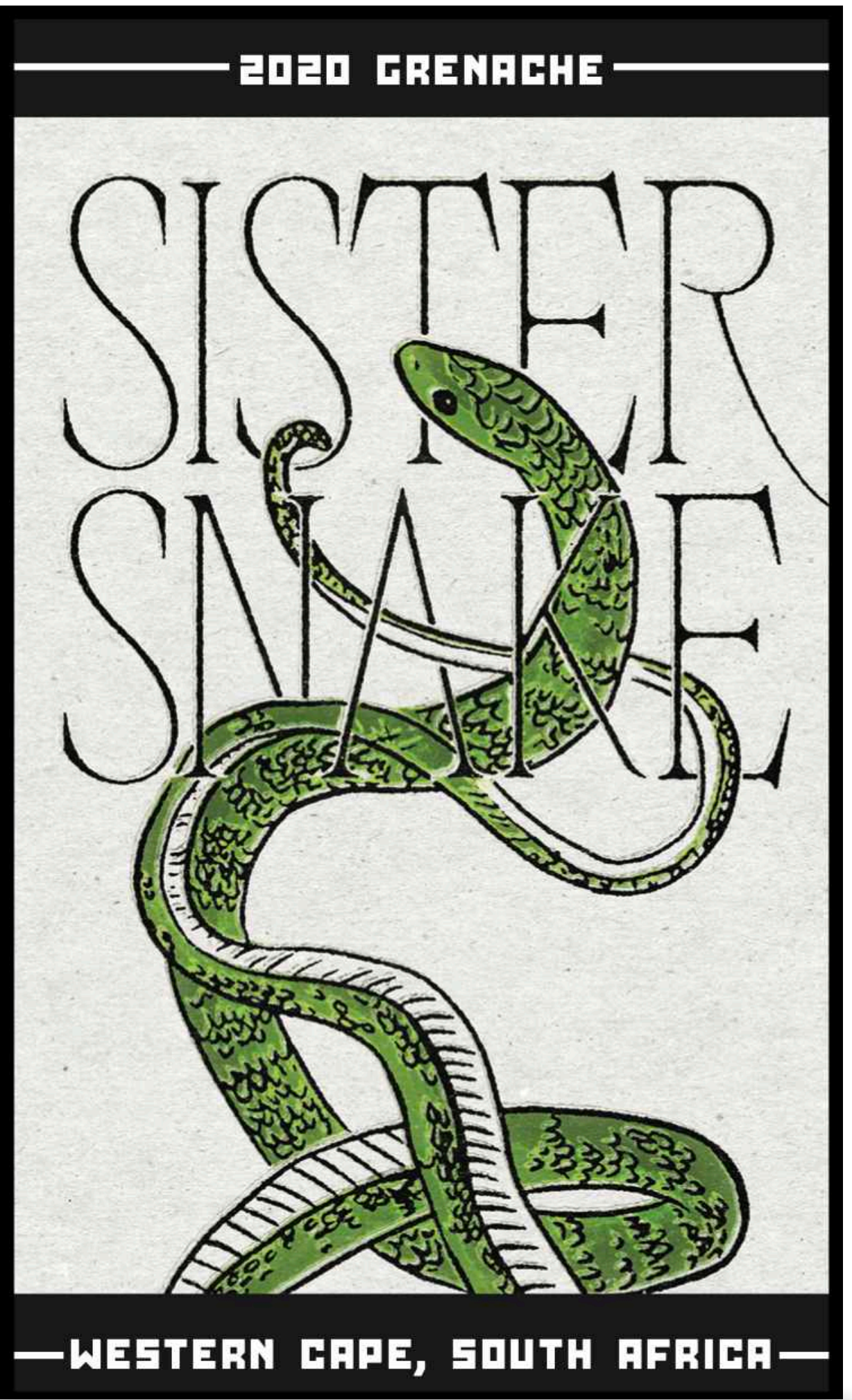




APPAREL + PRINT FOR HARPER WILDE







LABEL DESIGN FOR WINC WINES





2018 ROSÉ  
CALIFORNIA  
12.5% ALC. BY VOL.  
750 ML



LABEL DESIGN FOR WHOLE FOODS X DAVE KOZ PARTNERSHIP



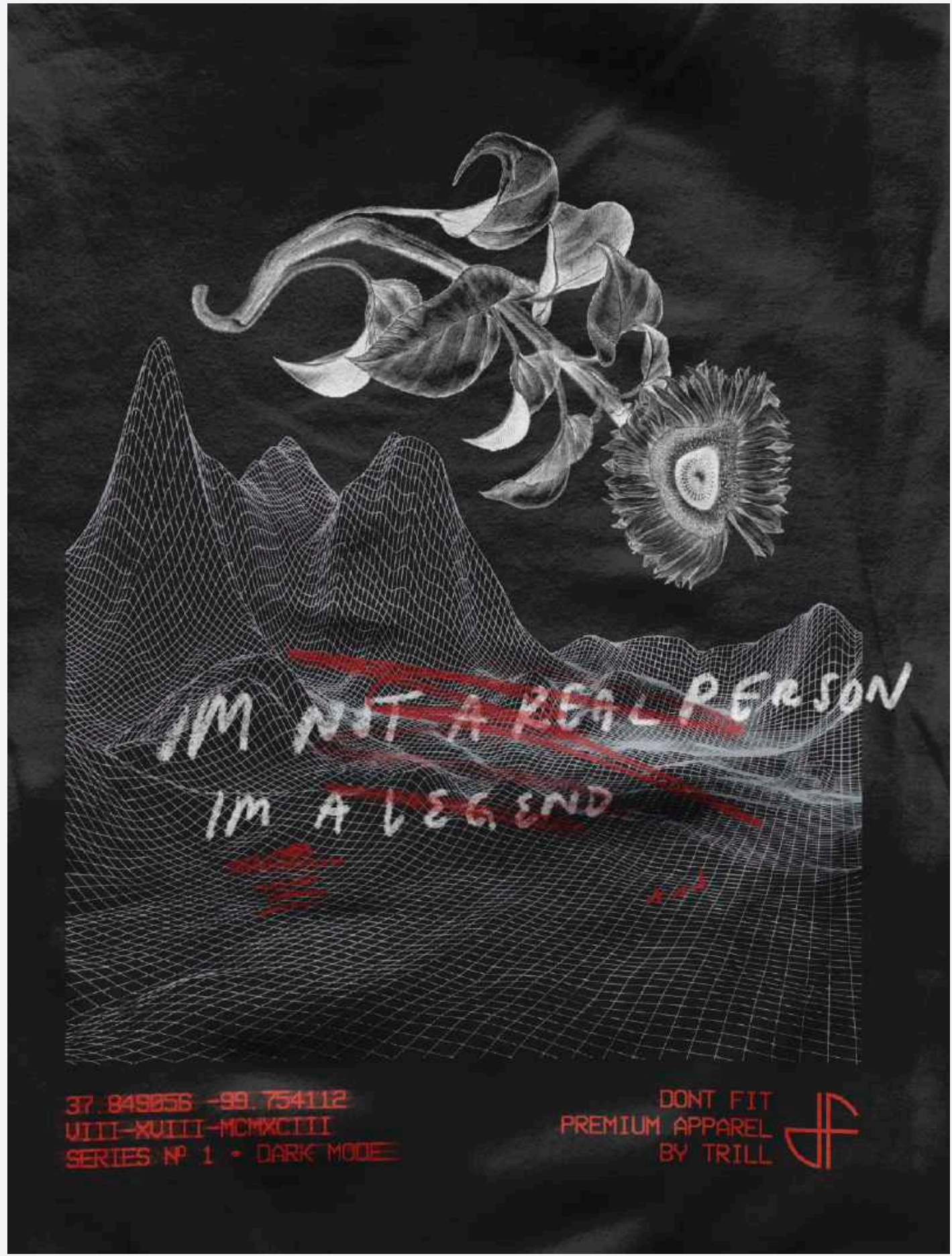
# COMMISSIONED WORK





LOGO & ICON SET ILLUSTRATED FOR HONEY HOUSE





APPAREL COLLECTION FOR NBA PLAYER WILLIE CAULEY-STEIN



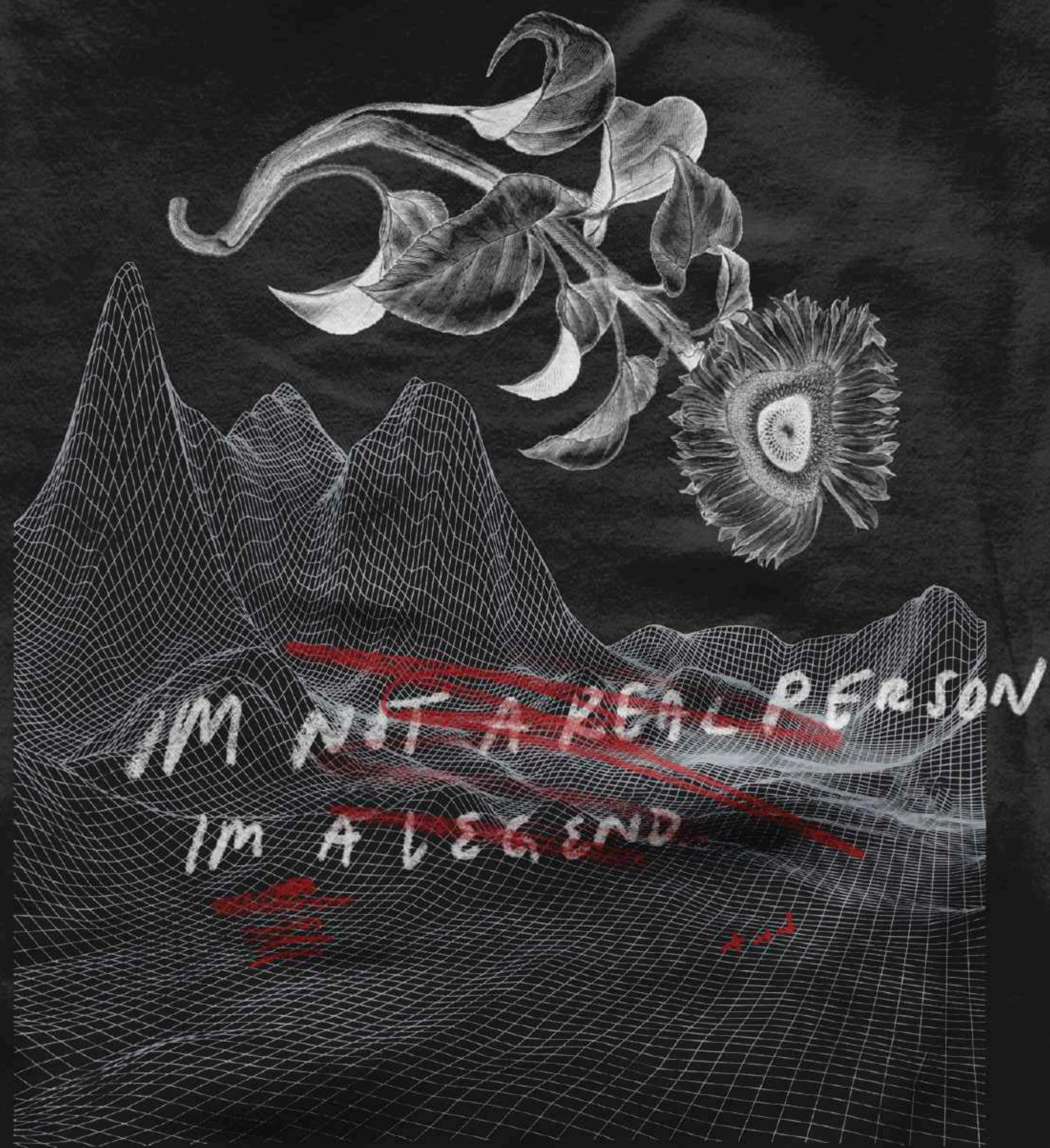


37.849056 -99.754112  
 VIII-XVIII-MCMXCIII  
 SERIES Nº 1 • LIGHT MODE

DONT FIT  
 PREMIUM APPAREL  
 BY TRILL







37. 849056 -99. 754112  
 VIII-XVIII-MCMXCIII  
 SERIES Nº 1 • DARK MODE

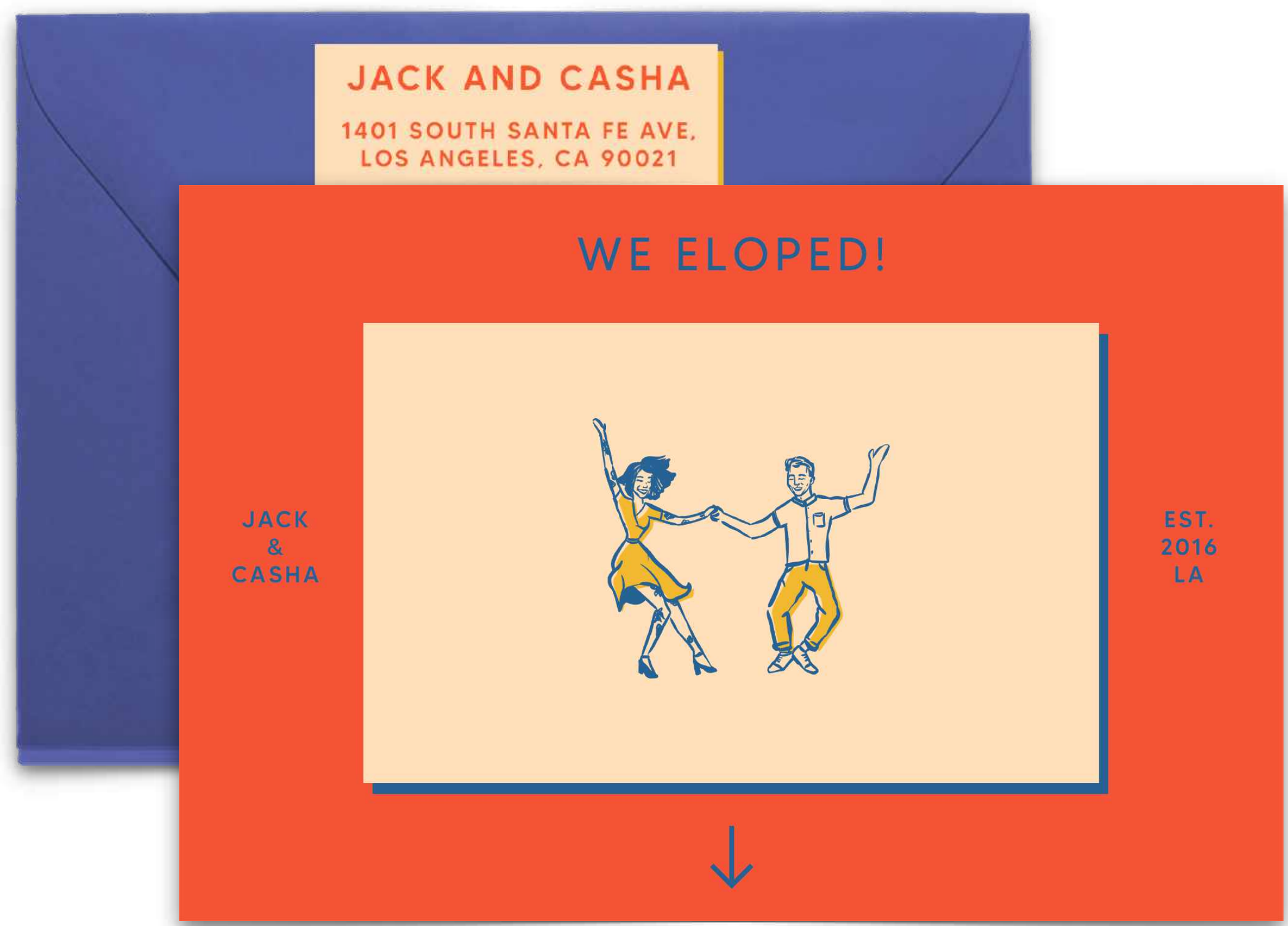
DONT FIT  
 PREMIUM APPAREL  
 BY TRILL





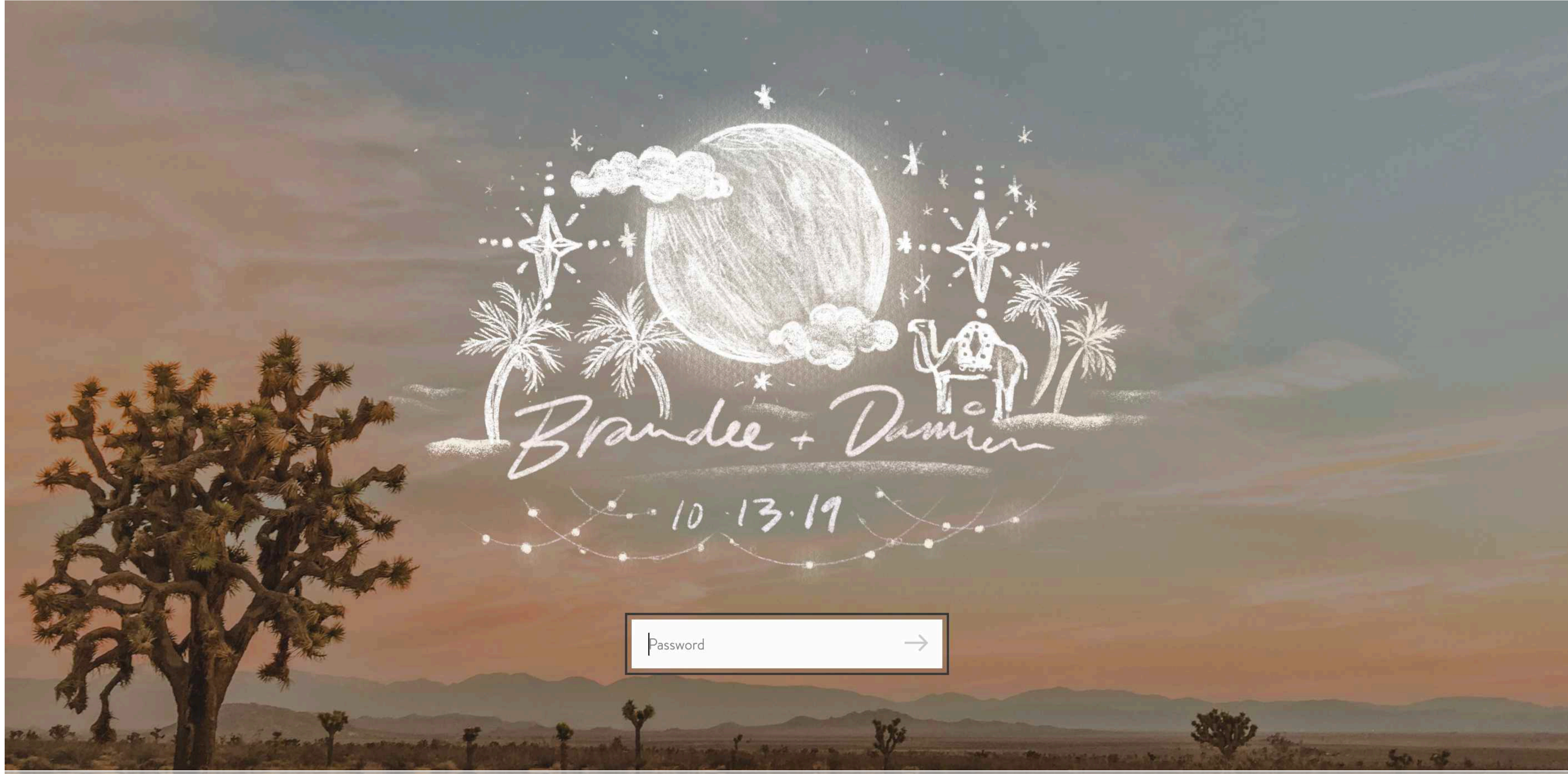






CUSTOM ILLUSTRATIONS + DESIGNS FOR WEDDING SUITE





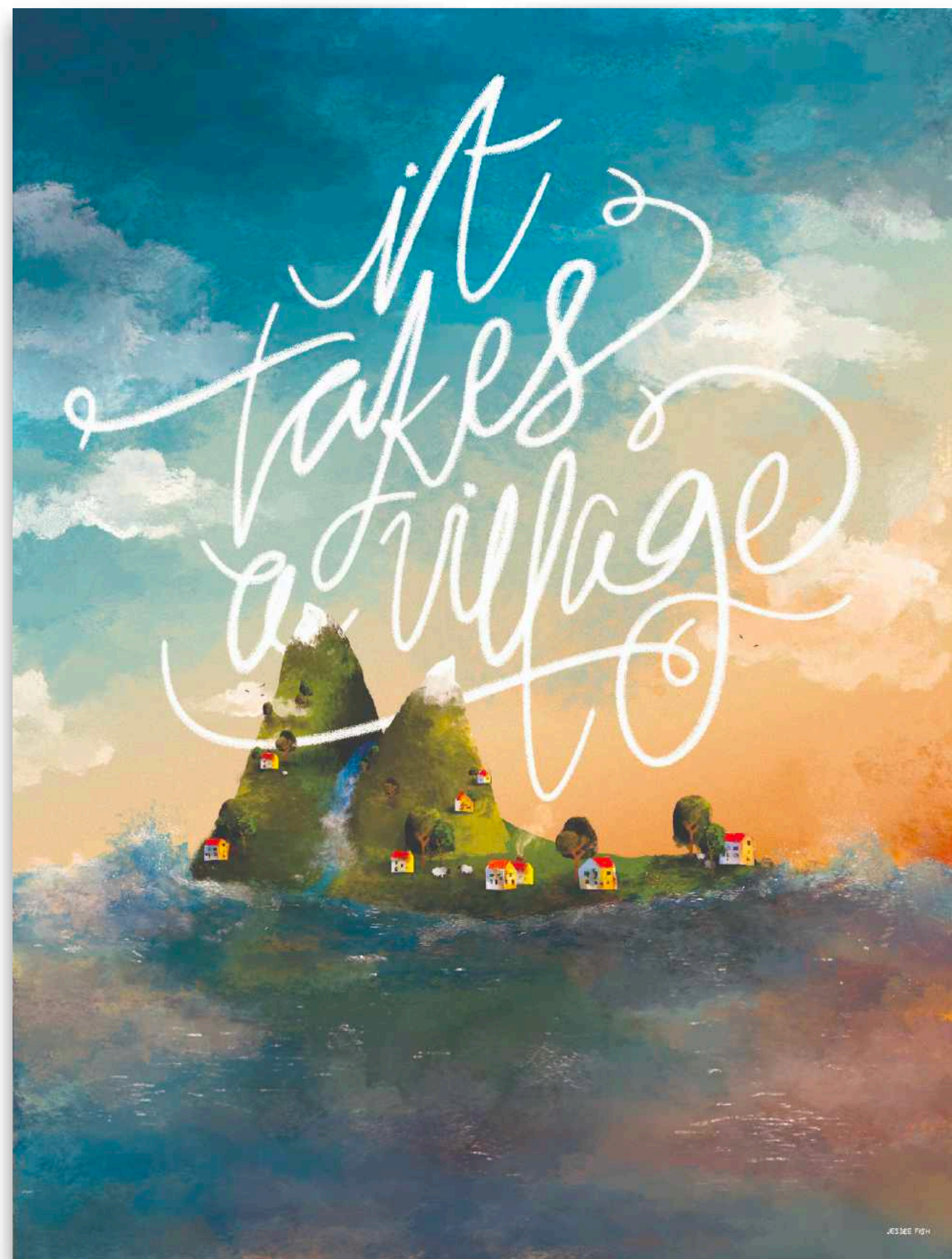
CUSTOM WEDDING SUITE ILLUSTRATIONS





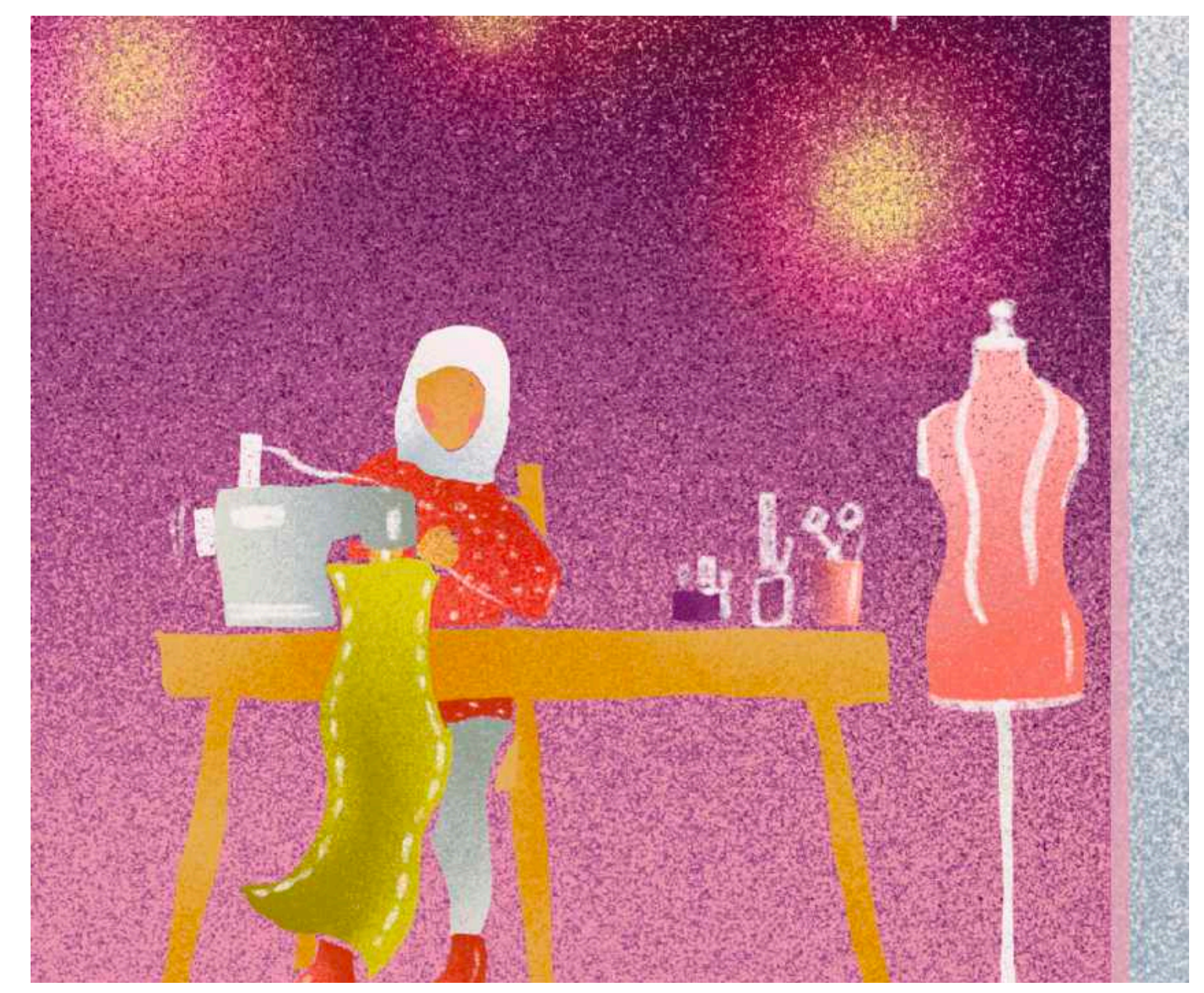
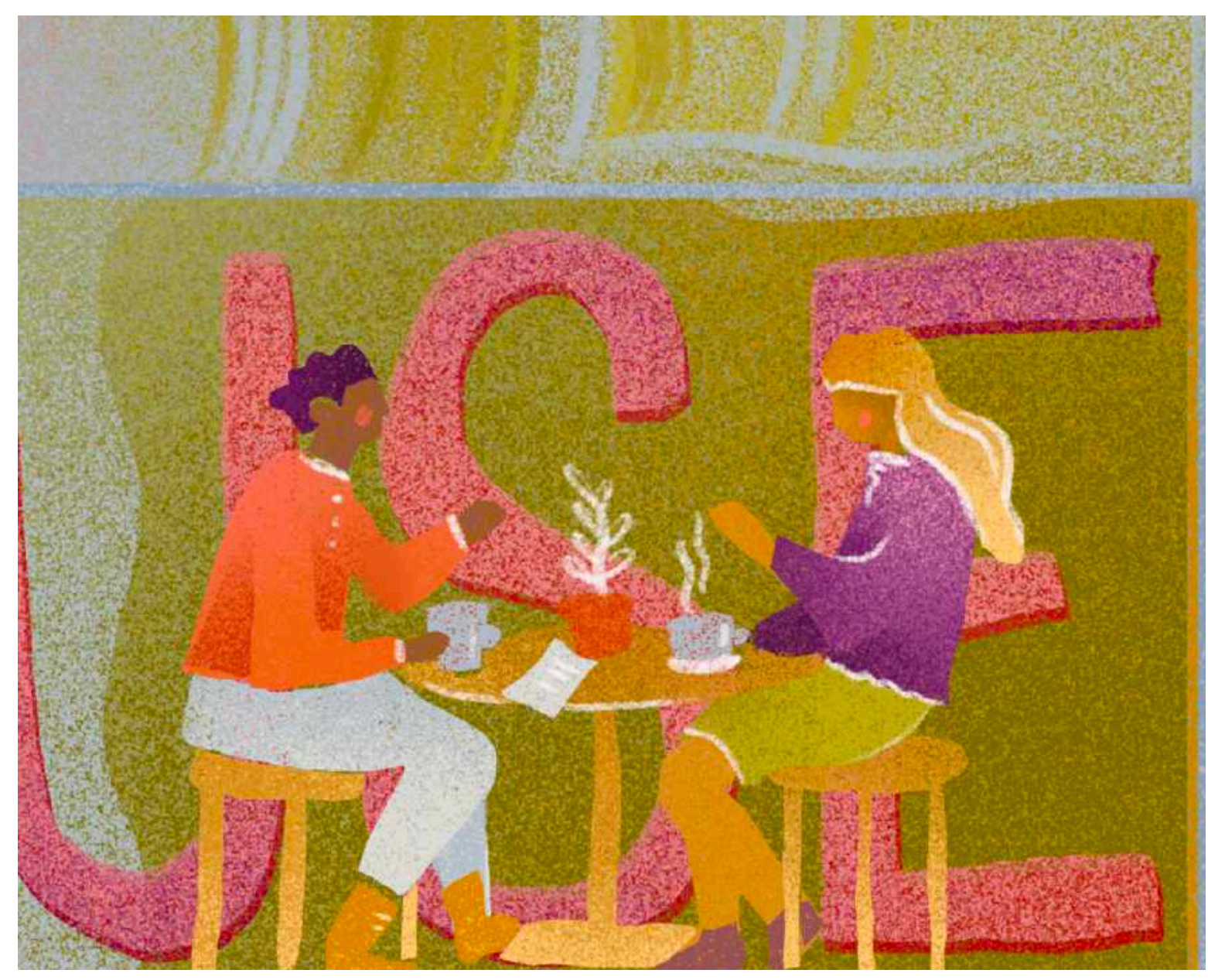
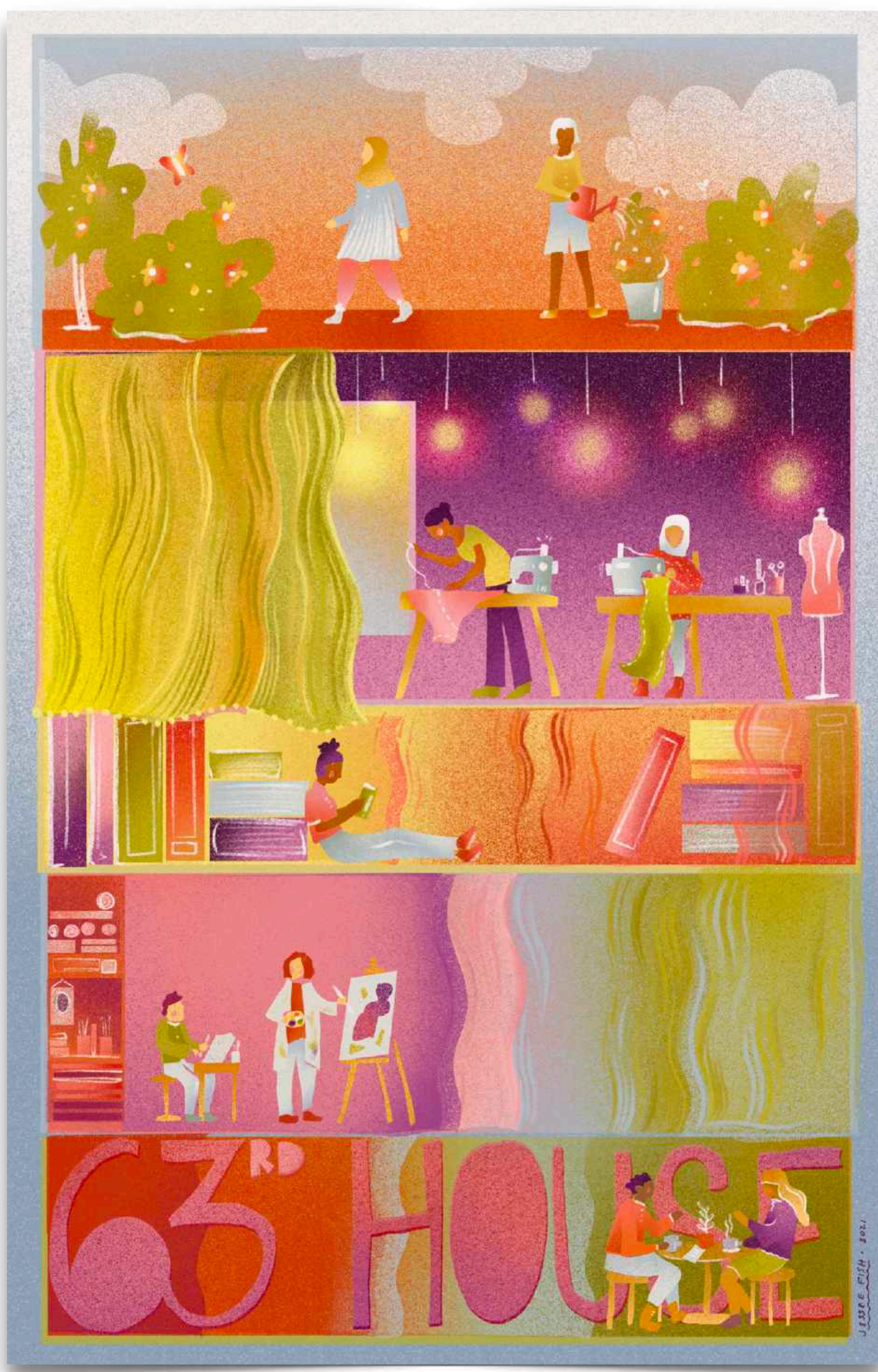
CUSTOM WEDDING SUITE + SIGNAGE ILLUSTRATIONS





COMMISSIONED ILLUSTRATION





COMMISSIONED LIMITED-EDITION POSTER BENEFITING 63RD HOUSE





COVER ILLUSTRATIONS FOR THE DESIGN ISSUE OF THE AMERICAN MARKETING ASSOCIATION MAGAZINE



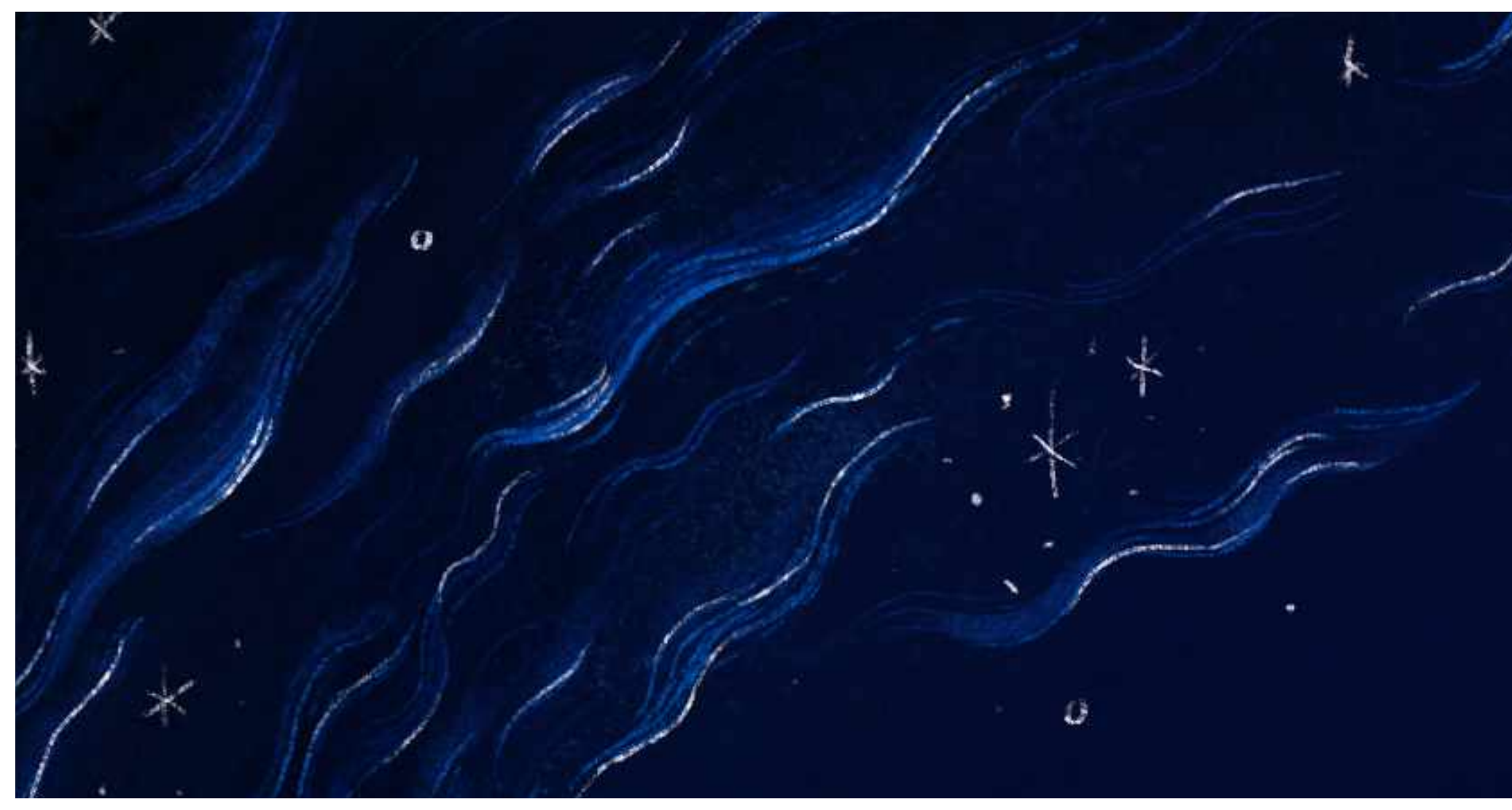
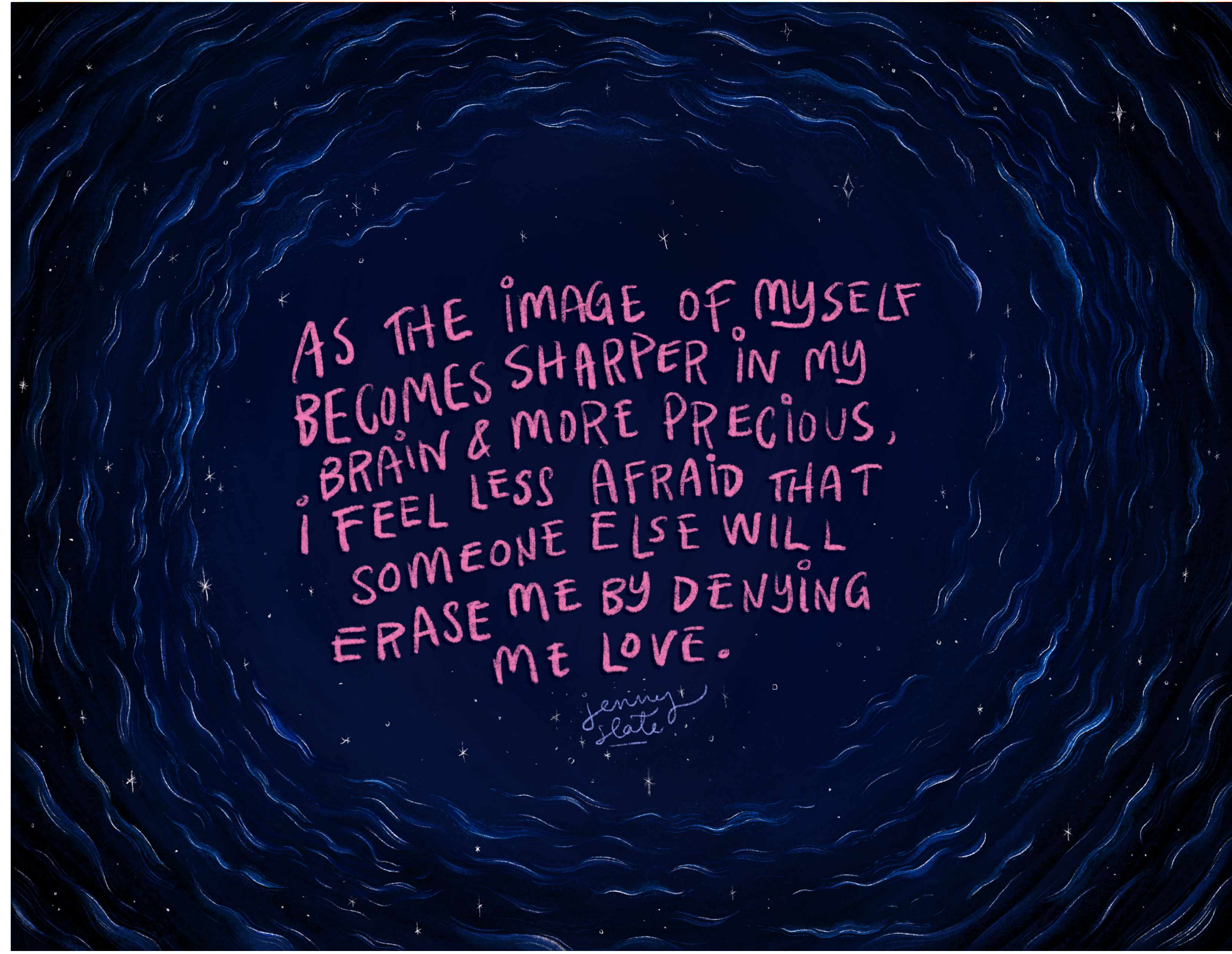
# PERSONAL WORK





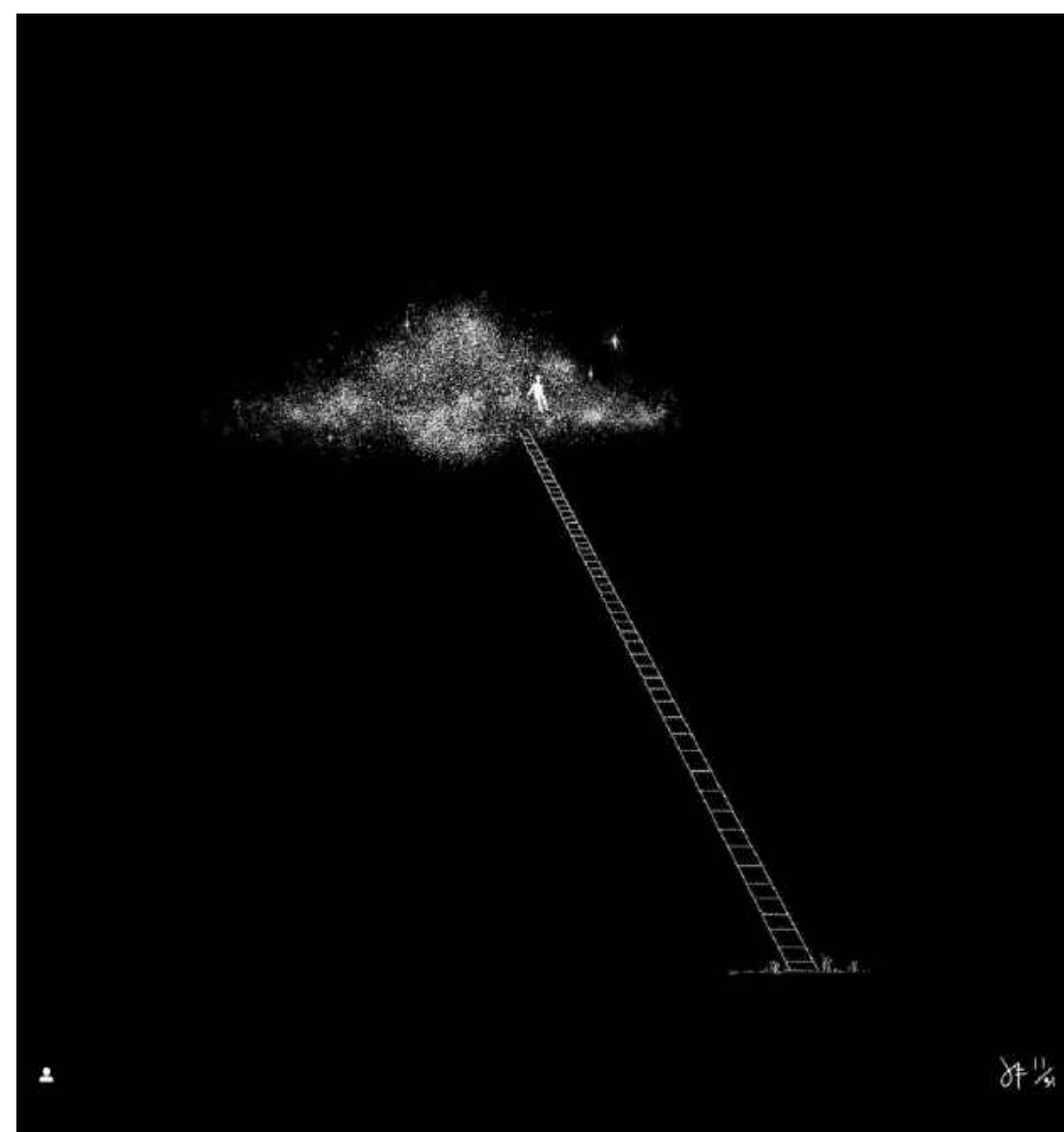
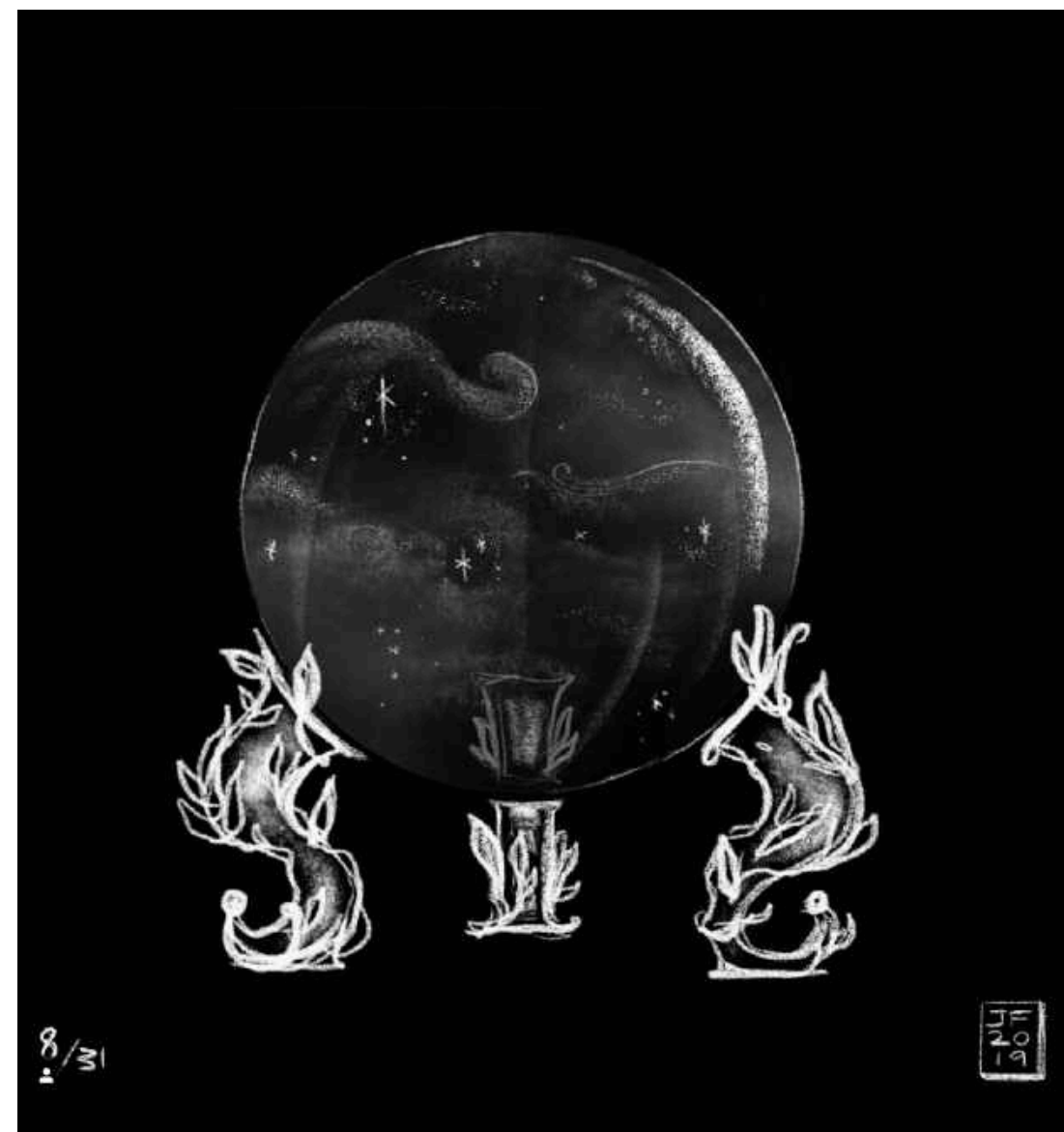
POSTCARD ILLUSTRATION





**JENNY SLATE: AS THE IMAGE OF MYSELF BECOMES SHARPER IN MY BRAIN AND MORE PRECIOUS, I FEEL LESS SCARED THAT SOMEONE ELSE WILL ERASE ME BY DENYING ME LOVE.**

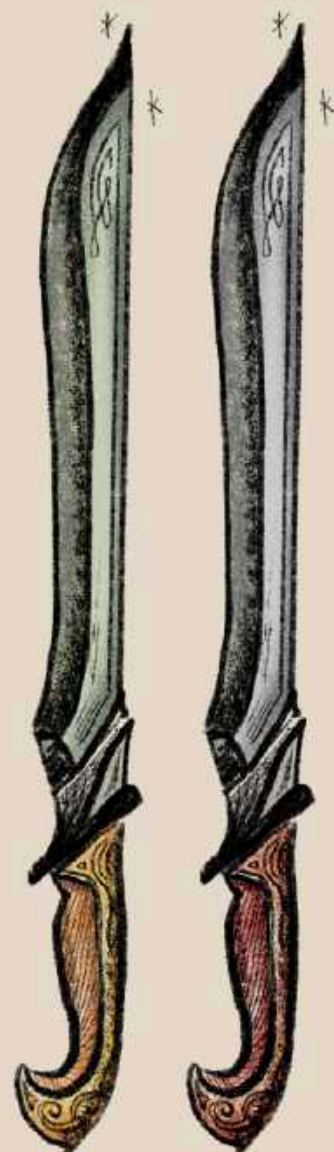




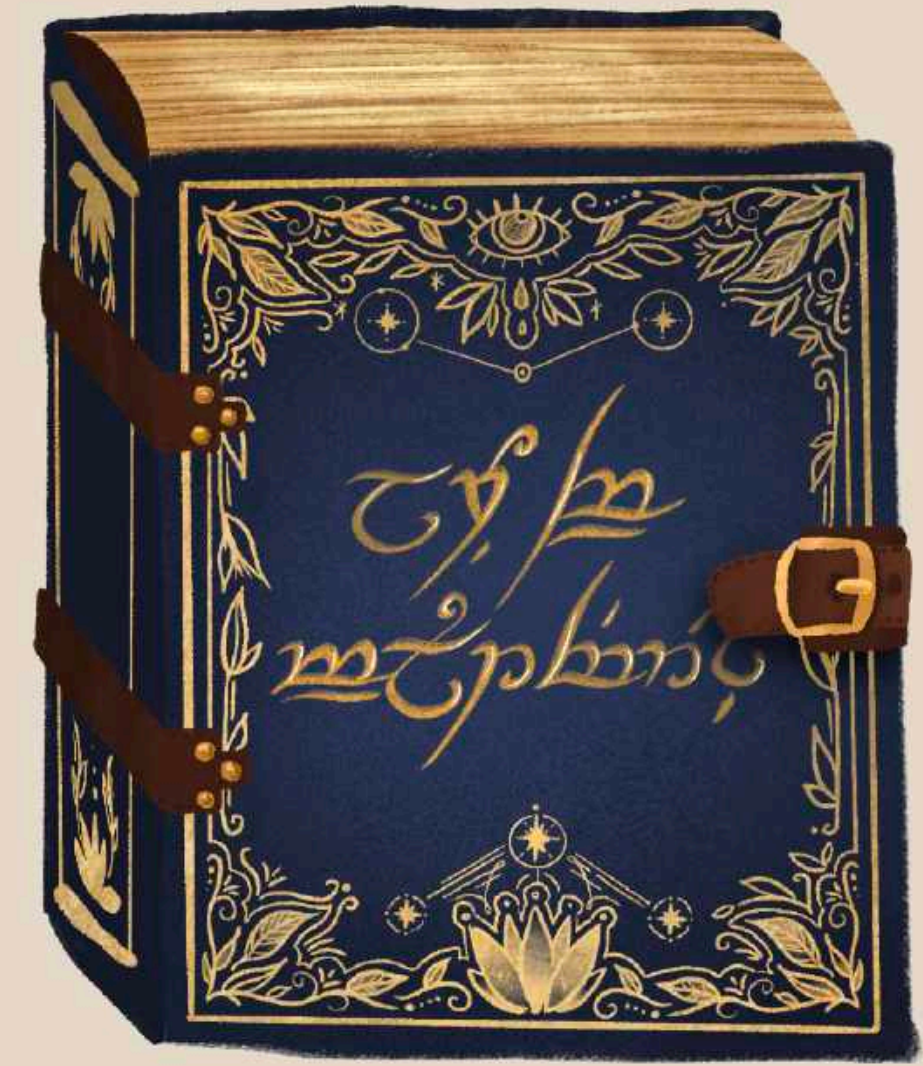
SELECTION OF ILLUSTRATIONS FROM INKTOBER SERIES

FULL SERIES AVAILABLE ON INSTAGRAM





SHORT SWORDS



TOME OF HISTORICAL LORE



PRAYER BOOK



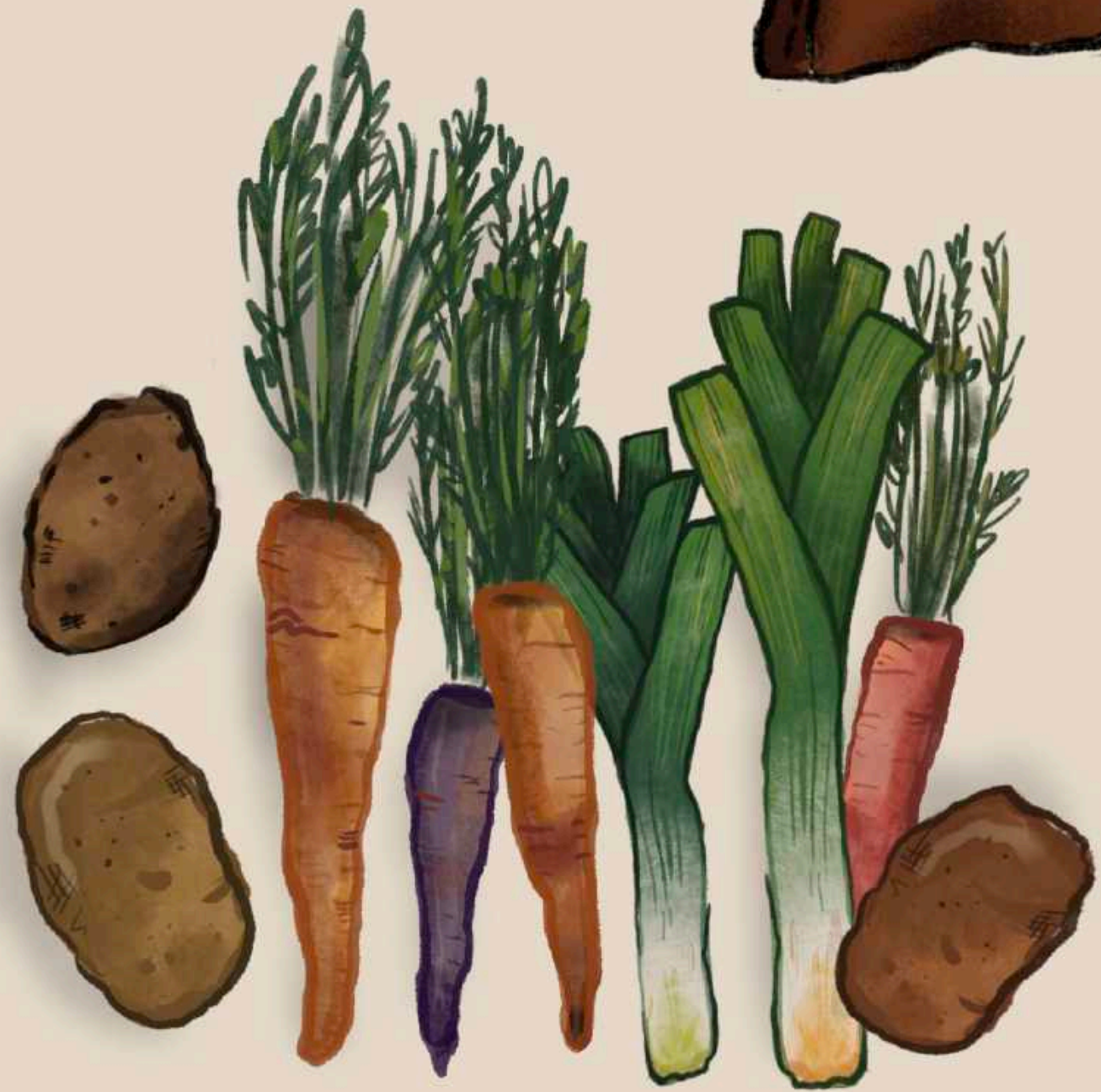
BELT POUCH



SMALL KNIFE



SILVER COMB



ASSORTED VEGETABLES



SPELLBOOK

PERSONAL ILLUSTRATIONS FOR DUNGEONS & DRAGONS CHARACTER  
[IT IS ILLEGAL TO MAKE FUN OF ME FOR THIS!!!]





ILLUSTRATION SERIES FOR PERSONAL DOULA RESEARCH ON MEDICAL INTERVENTIONS AND COMFORT MEASURES



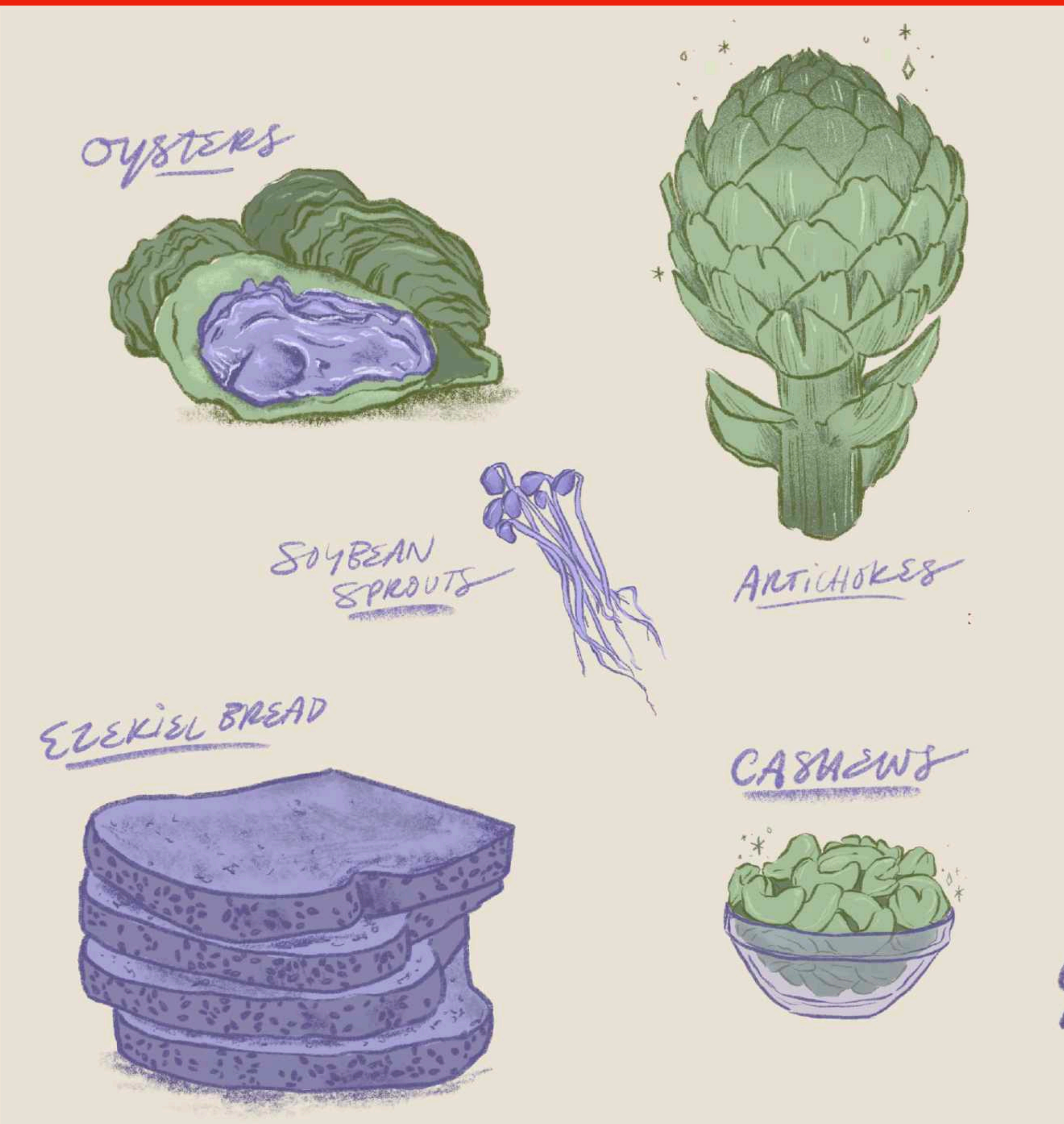


ILLUSTRATION SERIES FOR PERSONAL DOULA RESEARCH ON MEDICAL INTERVENTIONS AND COMFORT MEASURES



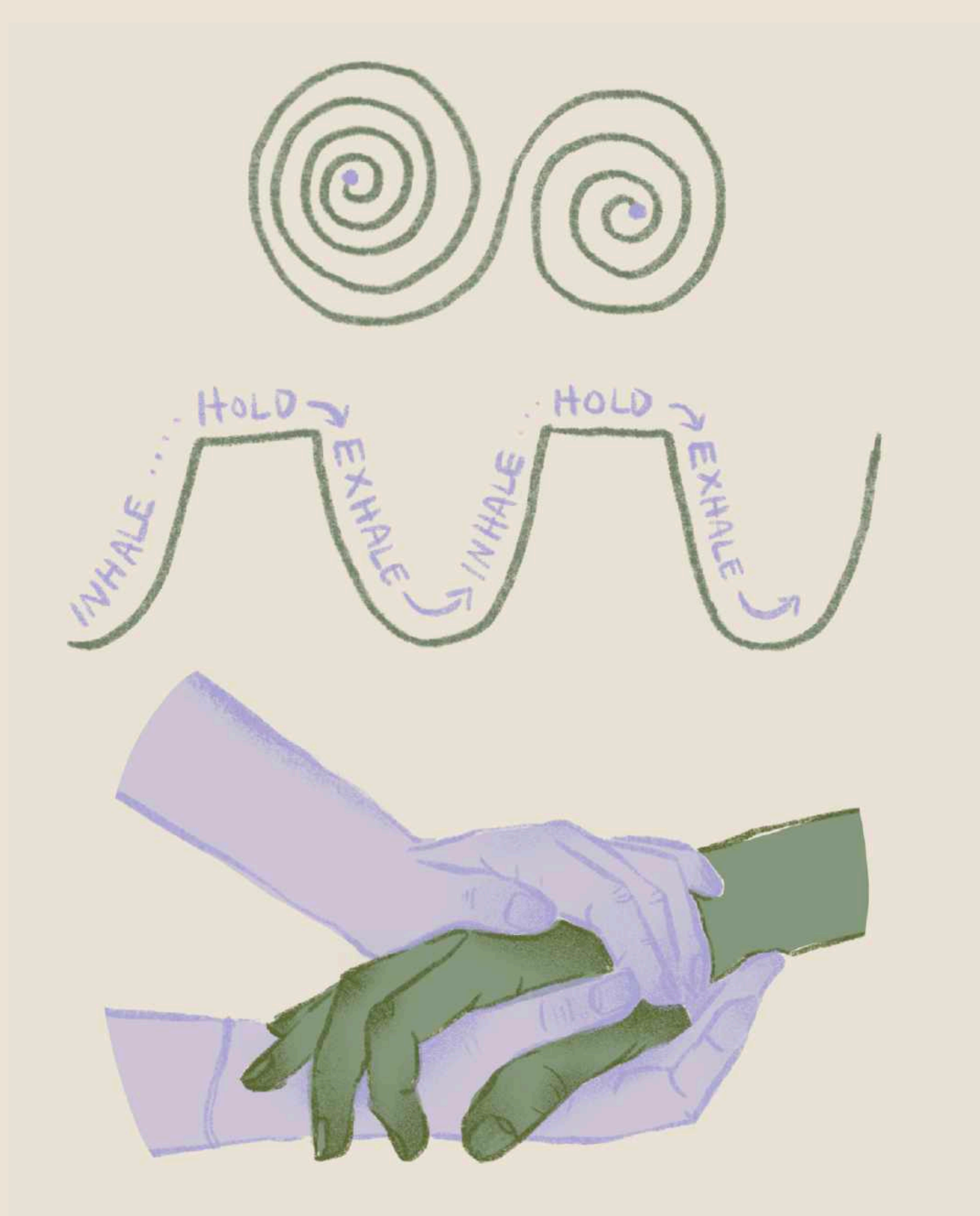


ILLUSTRATION SERIES FOR PERSONAL DOULA RESEARCH ON MEDICAL INTERVENTIONS AND COMFORT MEASURES



## PREGNANCY

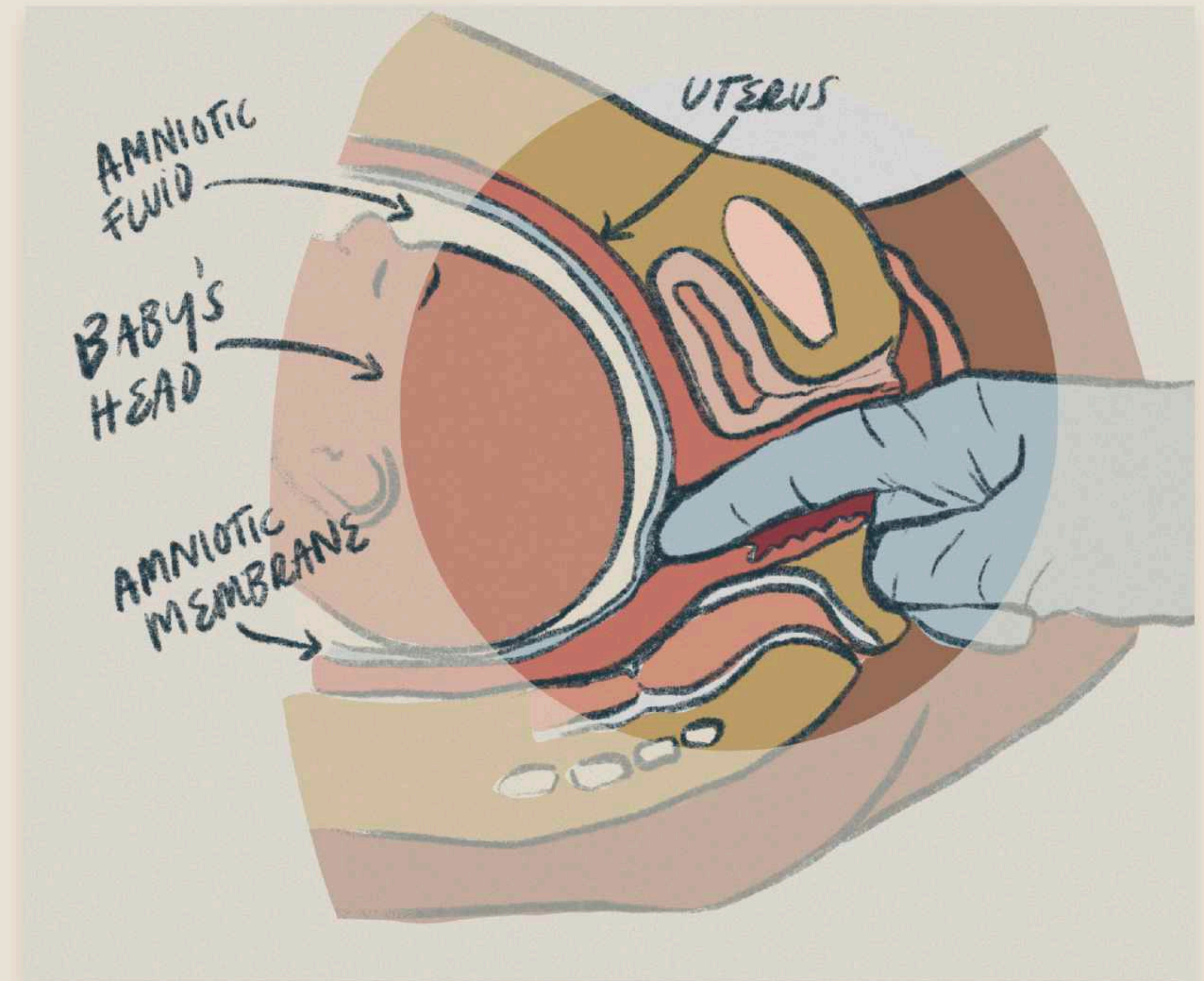
# Membrane sweep

## WHAT SHOULD I EXPECT?

Membrane sweeping happens during a vaginal exam or cervical check when your care provider/practitioner inserts their finger into your vaginal canal towards the opening of the cervix. They'll sweep their finger in a circular motion around to disrupt the tissue that separates your baby from the vaginal canal. This can usually only be done if your cervix is at least 1cm dilated, and is often done during a post-term vaginal exam (after the due date). **Be sure to share your preferences regarding membrane sweeping with your provider before your routine exams, because many membrane sweeps occur without the pregnant person's knowledge or consent.**

If your cervix isn't dilated, the care provider might instead massage the cervix with their finger to generate a similar effect. Membrane sweeping may happen once or several times toward the last weeks of pregnancy.

After a membrane sweep, you may experience irregular false labor contractions that disrupt your sleep and rest. The membrane sweep itself might also be pretty painful or uncomfortable, and you may experience bleeding/spotting afterwards.





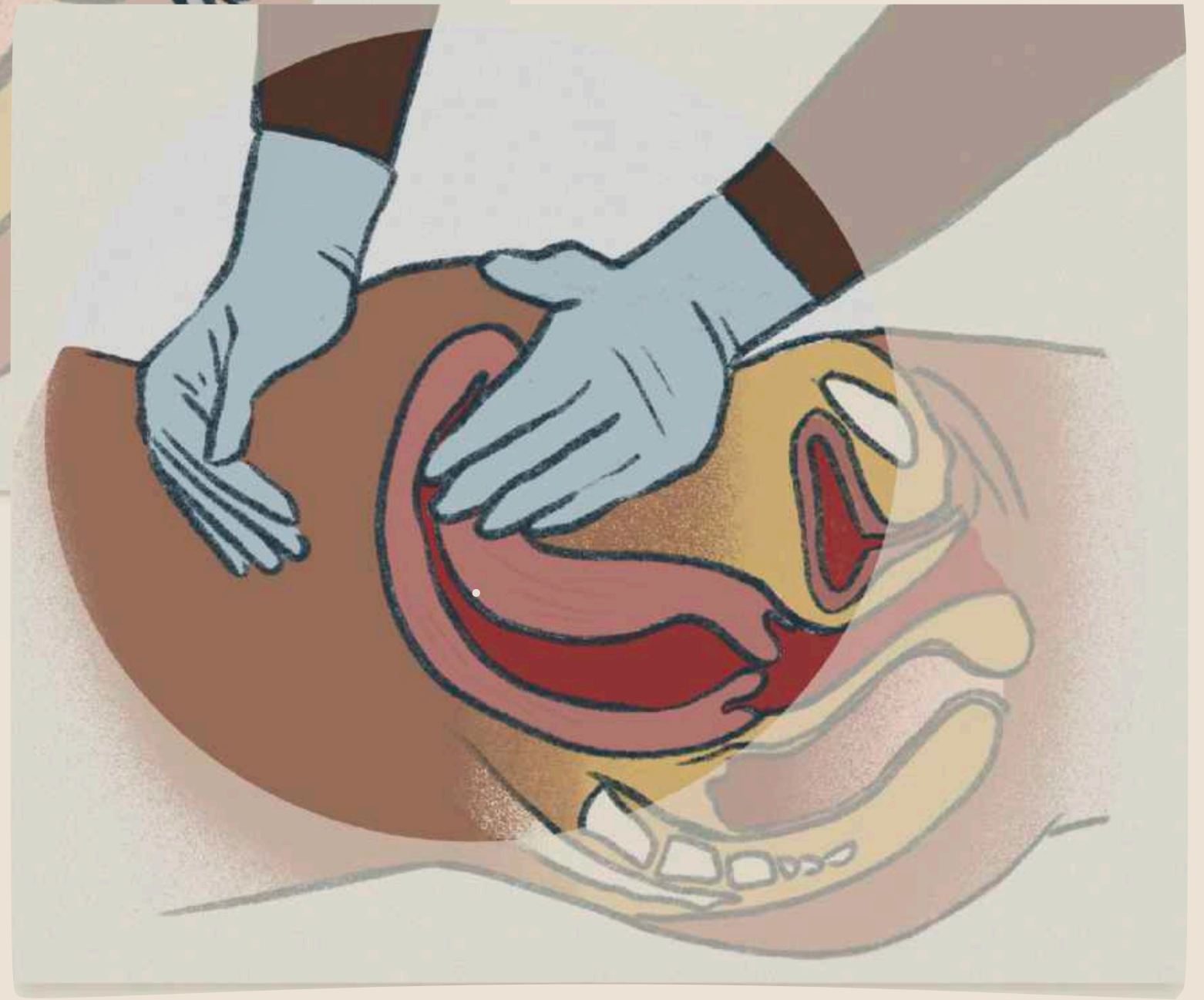
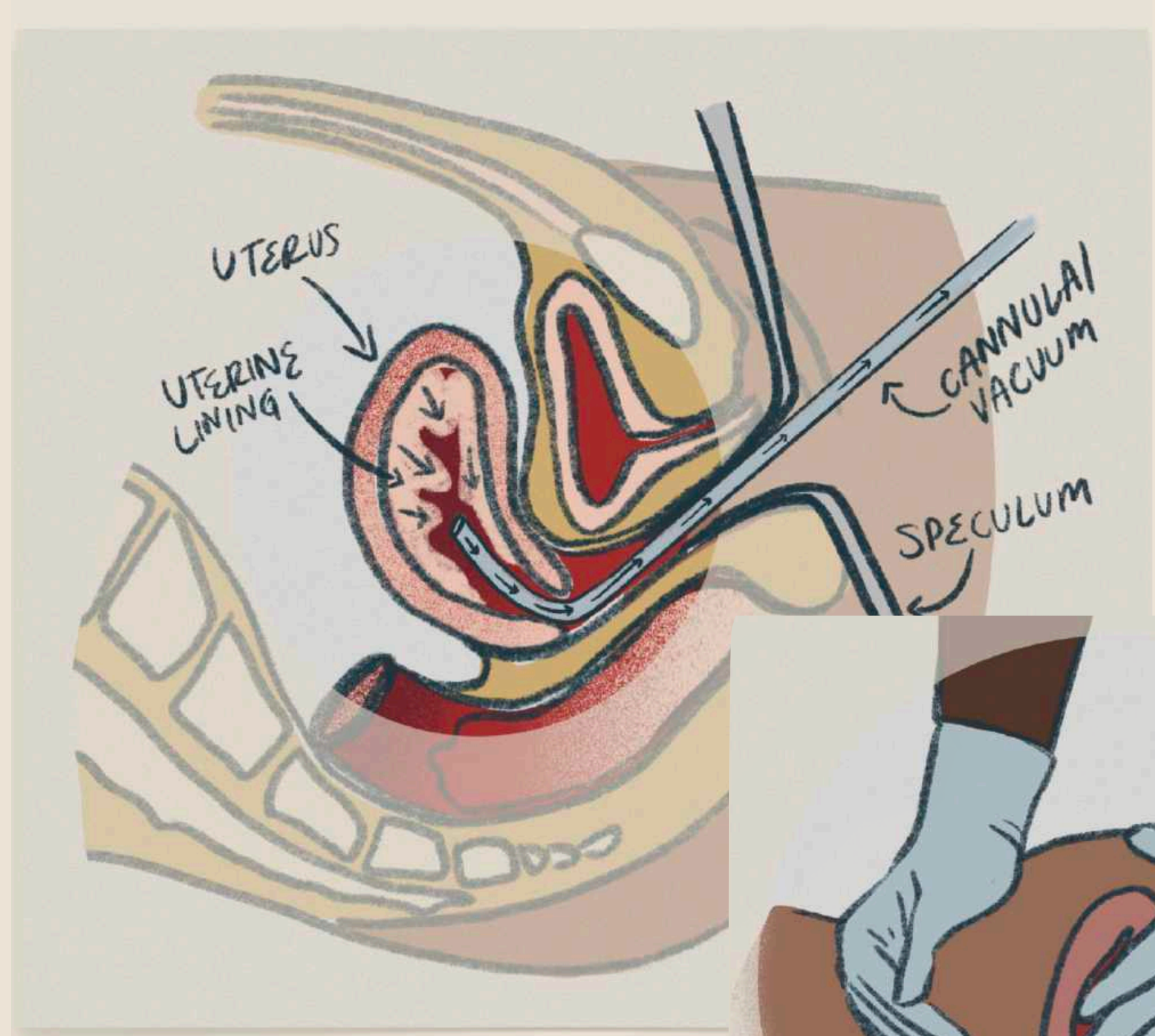
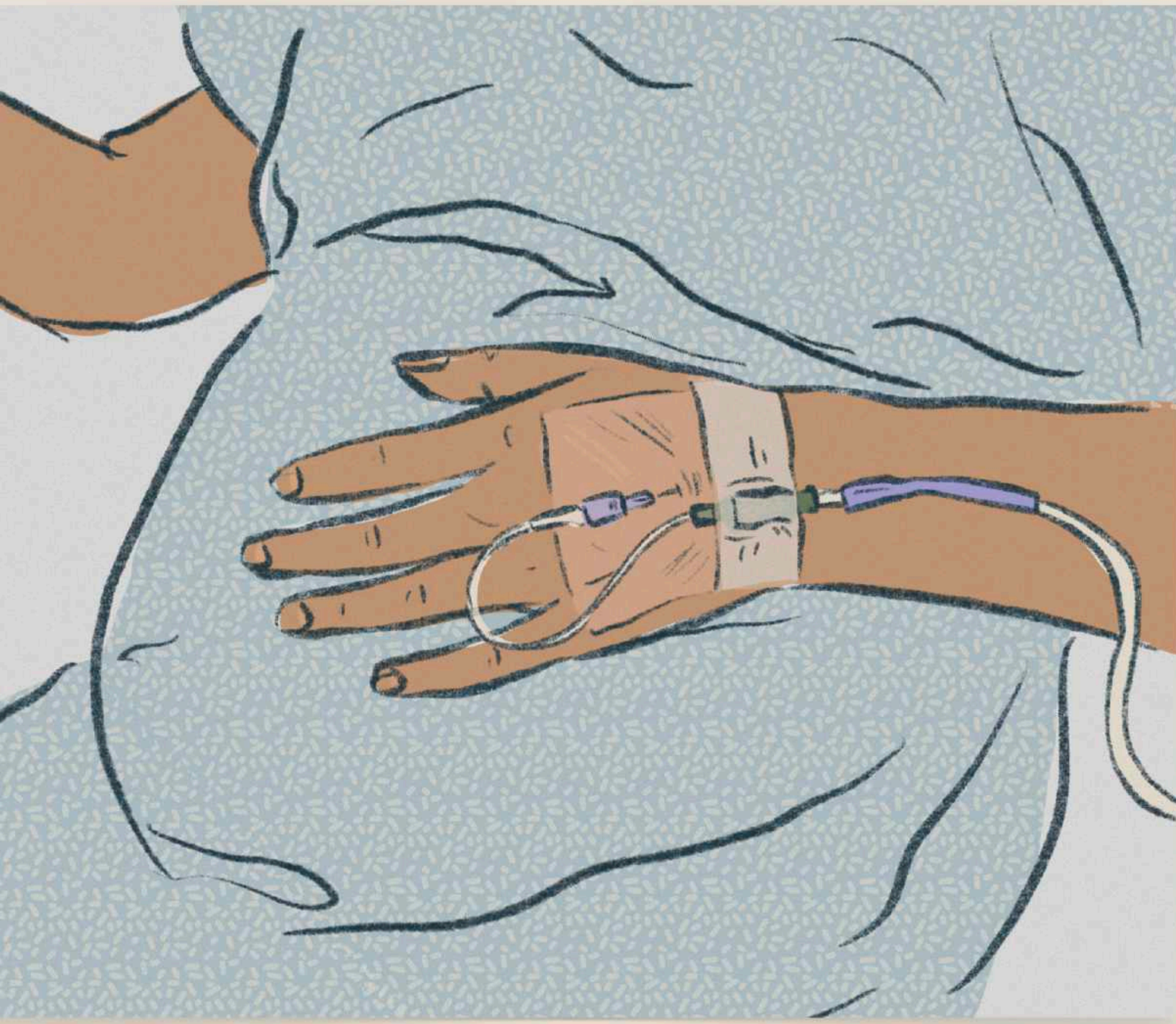


ILLUSTRATION SERIES FOR PERSONAL DOULA RESEARCH ON MEDICAL INTERVENTIONS AND COMFORT MEASURES





ANATOMICAL ILLUSTRATION DONE AS PART OF BIRTH TRAINING WORKSHOP



# STORYBOARDS + CONCEPT SKETCHES

Please email me directly at [jesseefish@gmail.com](mailto:jesseefish@gmail.com)  
for storyboard and concept sketch portfolio.



THAT'S ALL SHE WROTE



**IG** @JESSEEFISH

**WEB** JESSEEFISH.COM

**CONTACT** JESSEEFISH@GMAIL.COM