

# A REVOLUTIONARY DAY TRIP TO WALDEN POND

24 OR 38 MILES

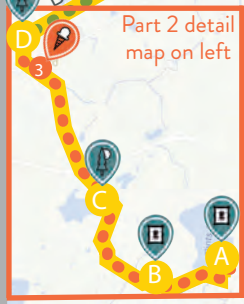
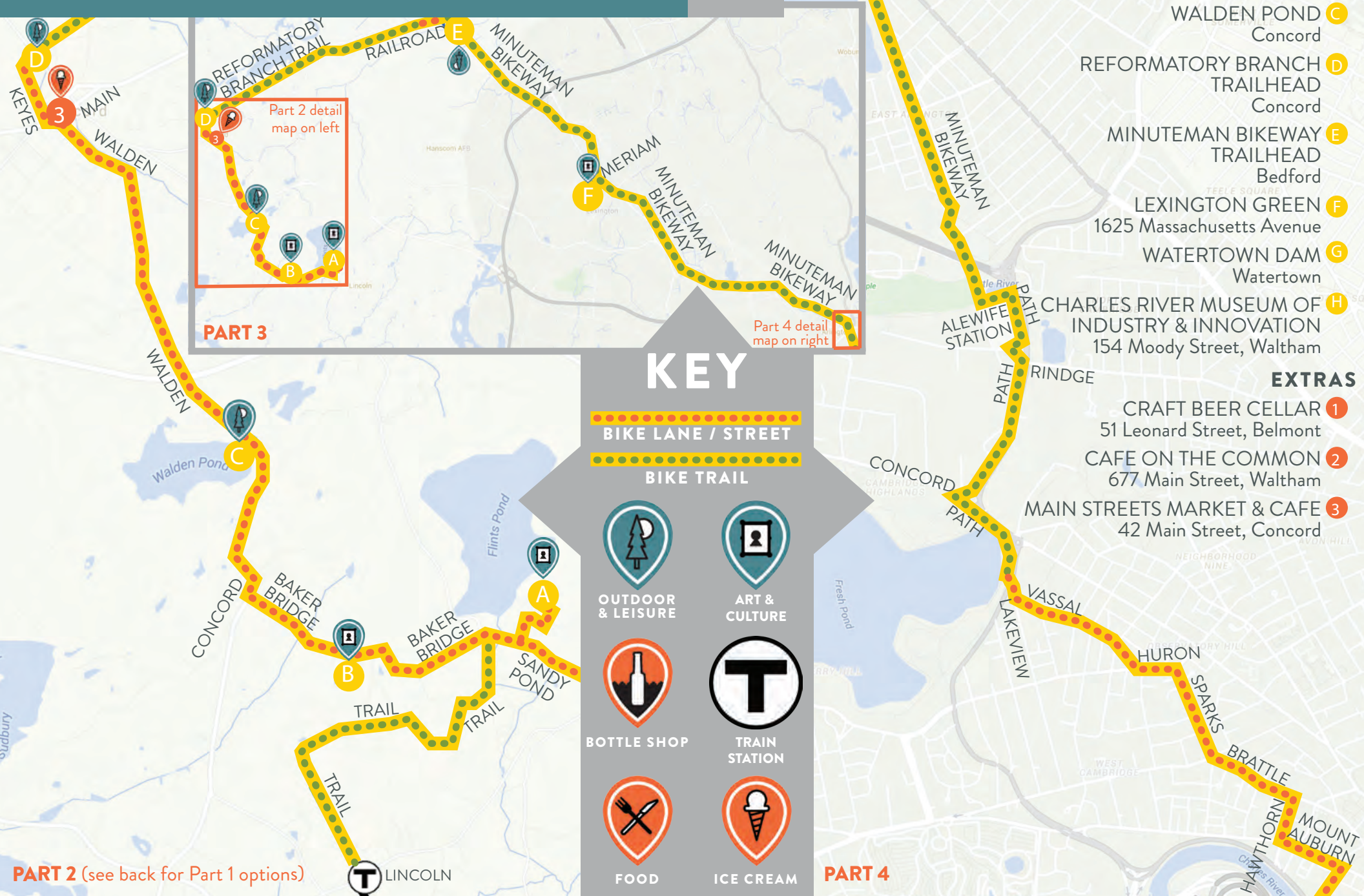


## HIGHLIGHTS

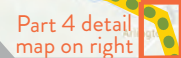
- A** DECORDOVA SCULPTURE GARDEN & MUSEUM  
51 Sandy Pond Road, Lincoln
- B** GROPIUS HOUSE  
68 Baker Bridge Road, Lincoln
- C** WALDEN POND  
Concord
- D** REFORMATORY BRANCH TRAILHEAD  
Concord
- E** MINUTEMAN BIKEWAY TRAILHEAD  
Bedford
- F** LEXINGTON GREEN  
1625 Massachusetts Avenue
- G** WATERTOWN DAM  
Watertown
- H** CHARLES RIVER MUSEUM OF INDUSTRY & INNOVATION  
154 Moody Street, Waltham

## EXTRAS

- 1** CRAFT BEER CELLAR  
51 Leonard Street, Belmont
- 2** CAFE ON THE COMMON  
677 Main Street, Waltham
- 3** MAIN STREETS MARKET & CAFE  
42 Main Street, Concord



PART 3



Part 4 detail map on right

## KEY



BIKE LANE / STREET



BIKE TRAIL



OUTDOOR & LEISURE



ART & CULTURE



BOTTLE SHOP



TRAIN STATION



FOOD



ICE CREAM

PART 2 (see back for Part 1 options)

PART 4

# A REVOLUTIONARY DAY TRIP TO WALDEN POND

24 OR  
38 MILES

PROMOTING TWO-WHEELED TOURISM IN CITIES ACROSS NORTH AMERICA

## ABOUT THE CURATOR

JESSICA ROBERTSON

@abbikes

By day, Jessica works for the Metropolitan Area Planning Council, the regional planning agency for the 101 cities and towns of Greater Boston. By nights (and weekends), she is proud to serve on the boards of CommonWheels Bicycle Co-op. Jessica bikes everywhere, almost never in spandex.



@BIKABOUT

## HIGHLIGHTS

- A DECORDOVA SCULPTURE GARDEN & MUSEUM** - The deCordova is home to the largest outdoor sculpture park in New England. It's a wonderful place to stop for a picnic and explore, whether or not you even venture inside the museum! Admission to the park is FREE and they love bikers. Grounds 7 days 10am-5pm / Cafe M-F 11am-3pm, S-S 11am-4pm
- B GROPIUS HOUSE** - The highly influential private residence of the founder of the Bauhaus architectural movement, displaying many design and material choices that were revolutionary in 1938, but went on to become commonplace today. Unless you have time, simply observing the house from the street is worth it. Tours \$15. W-Su 11-5pm
- C WALDEN POND** - The home of Henry David Thoreau is still as beautiful today, although not quite as much of an escape from civilization. A lovely place to stop for a swim and contemplate nature and society's place in it. 7 days 5am-sunset
- D REFORMATORY BRANCH TRAILHEAD** - More than 4 miles of flat, straight, compacted sand trails that offer an easy way to bike out of the city through three different wooded natural areas. A few spots may be grassy or soft.
- E MINUTEMAN BIKEWAY TRAILHEAD** - A wildly successful rail-trail that connects Alewife Station in western Cambridge to Arlington, Lexington, and finally Bedford.
- F LEXINGTON GREEN** - The Minuteman Bikeway passes through the heart of the American Revolution. Soak up some history at the Lexington Battle Green, site of the first blood spilt in the Revolutionary War, take a one-block detour to the Old Burial Ground to see the graves of revolution-era Lexingtonians, and check out the Buckman Tavern, which dates to 1710 and was the gathering place for the Minutemen as they awaited the arrival of the British Soldiers on April 19th, 1775.

**G WATERTOWN DAM** - A cool place to stop and watch the wildlife, the Watertown Dam is just west of Watertown Square. In addition to geese and ducks, you're likely to see some stunning waterbirds like Cormorants, Great Blue Herons, and Black Crowned Night Herons. Read more about water birds of the Charles River here.

**H CHARLES RIVER MUSEUM OF INDUSTRY & INNOVATION** - Located in the restored Francis Cabot Lowell Mill, one of America's first textile mills, the Charles River Museum of Industry and Innovation has hands-on exhibits showcasing highlights of Boston-area inventions from 1812 to the present day. Be sure to check out the Orient Bicycles from the Waltham Manufacturing Company! M-F 10:30am-3:30pm

## EXTRAS

- 1 CRAFT BEER CELLAR** - Possibly the best purely-beer store anywhere near Boston, CBC was started by beer geeks, for beer geeks. Excellent domestic and foreign selections, knowledgeable staff, and wonderfully friendly service. M-Sa 10am-10pm / Su 10am-8pm
- 2 CAFE ON THE COMMON** - This local cafe is a great place to pick up provisions for the ride. Pastries, sandwiches, ice cream, and creative latte art are just some of the offerings. 7 days 7am-6pm

**3 MAIN STREETS MARKET & CAFE** - Concord has a charming town center with plenty of options for eating, drinking and window-shopping. Main Streets Market and Cafe is great for sandwiches, or if you're sticking around for dinner sidle up to the bar and make friends with the bartender. For ice cream, head down the alley next to Main Streets Market and Cafe for their ice cream outpost. M-Th 6:30am-10:30 / F-Sa 6:30am-11:30pm / Su 6:30am-8pm



## PART 1

Option 1 - Train + 2 miles

Option 2 - 16 miles