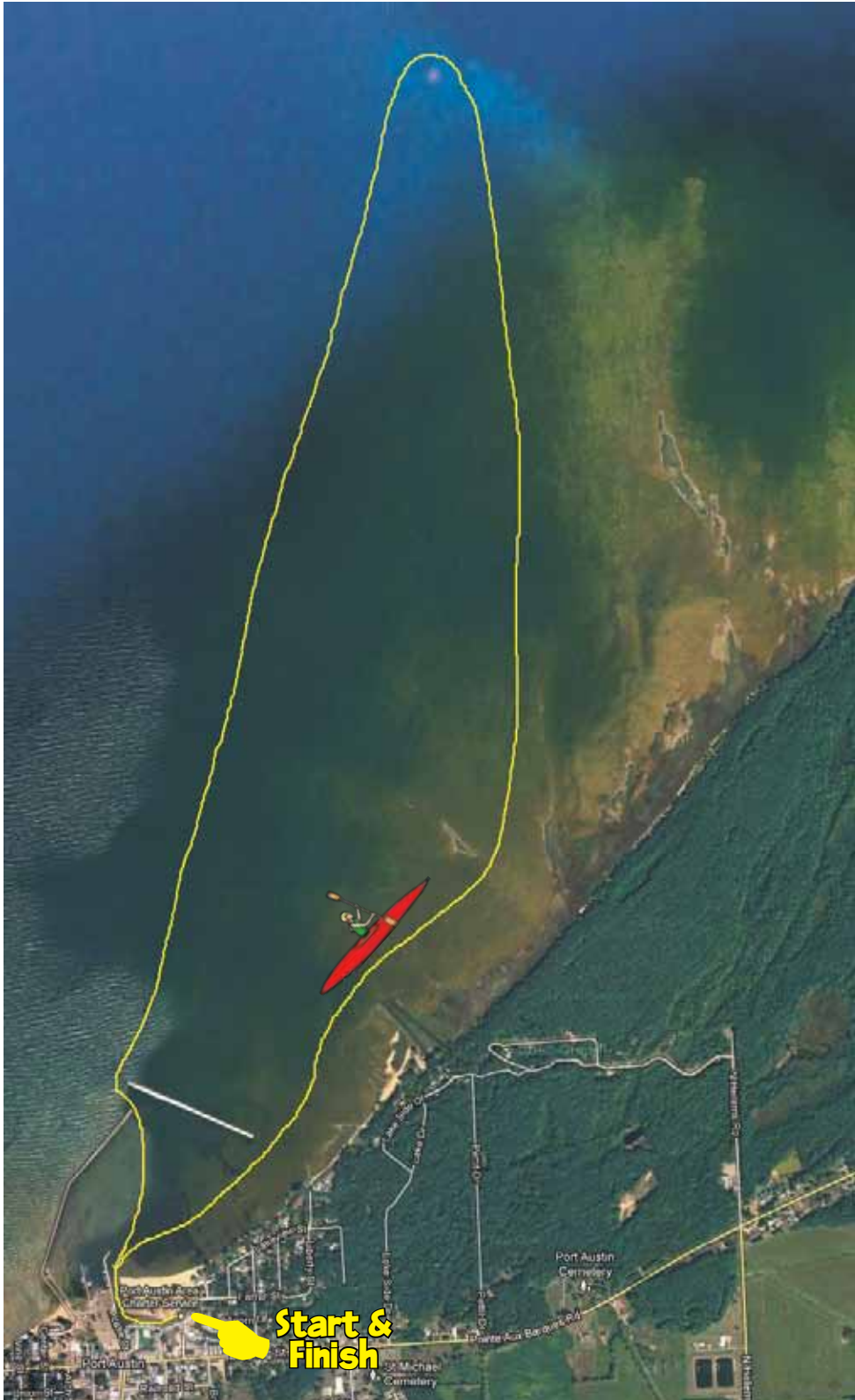


Lighthouse - Kayak Trail



The **Lighthouse Trail** is for experienced kayakers only, and should only be done on the calmest days. This trail takes you 2 miles into Lake Huron. The Port Austin Reef Light sits on a shoal, which causes waves to move unexpectedly and can result in tipping the kayak. Tandem kayaks are **NOT** allowed on this trail.

This trail is about 6 miles.



119 East Spring Street, Port Austin, MI 48467 • 989-550-6651
info@thumbkayak.com • www.portaustinkayak.com