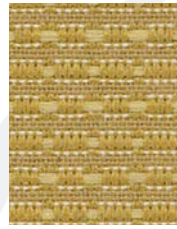


Bits & Pieces Collection 5*

UPHOLSTERY FABRIC



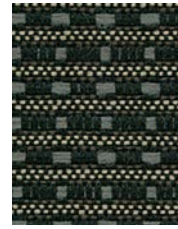
Avenue® SUNRISE



GOLD MINE



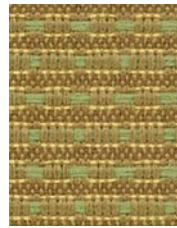
SAG HARBOR



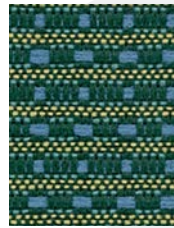
JETTY



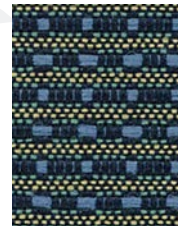
CRANBERRY



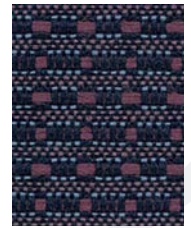
HINT OF MINT



VALLEY GREEN



POLO BLUE



PLUM ROYALE



Veer® FRUIT LOOP



WOODSTOCK



CAMMO



GRAPEVINE



MUSTANG



LAKWOOD



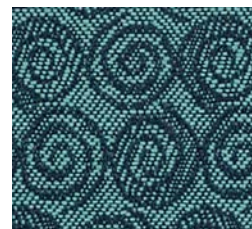
BLUE BAYOU



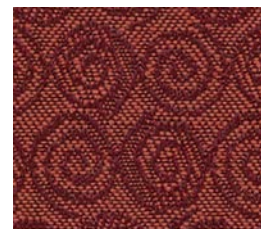
Whirligig® SAGE



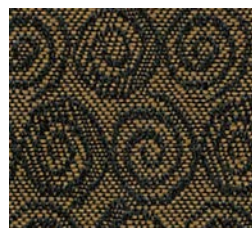
AMBER



TAHOE BLUE



REDWOOD



DURANGO



BLUE



NOCTURNE


* Covered by a 5 year limited performance warranty.

Bits & Pieces COLLECTION

5* Patterns are covered by a 5 year limited performance warranty. Contact your sales representative for written warranty terms and conditions.

TECHNICAL INFORMATION							A	☀	★
Pattern/Direction <small>(All patterns are suitable for railroading)</small>	Fiber	Repeat	Backing & Finish	Weight (p/yard)	Cleaning Code	Abrasion ASTM 4157 <small>(Double Rubs)</small>	Lightfastness AATCC 16E	Colorfastness AATCC 8	Seam Slippage ASTM-D-4034
Avenue <small>(Up the roll)</small>	79% Polyester 21% Polyolefin	1/4" H 3/8" V	Acrylic with Teflon®	11.0 oz.	WS	70,000 <small>(Cotton Duck)</small>	40 hours Class 5	Wet: Class 4 Dry: Class 5	Warp - 99 lbs Fill - 72 lbs
Veer <small>(Up the roll)</small>	66% Polyester 34% Polyolefin	9/16" H 3/8" V	Acrylic with Teflon®	13.7 oz.	WS	100,000 <small>(Cotton Duck)</small>	40 Hours Class 5	Wet: Class 4 Dry: Class 4	Warp - 99 lbs Fill - 94 lbs
Whirligig <small>(Up the roll)</small>	100% Polyester	11/16" H 1-7/8" V	Acrylic with Teflon®	9.5 oz.	WS	85,000 <small>(Cotton Duck)</small>	40 Hours Class 5	Wet: Class 4.5 Dry: Class 4.5	Warp - 94 lbs Fill - 88 lbs

Cleaning Instructions: WS - For water based stains, use mild detergent foam or upholstery shampoo. For oil based stains, spot clean with a dry cleaning solvent, being sure to test area first. CLEANING BY A PROFESSIONAL SERVICE IS RECOMMENDED.

Flame Resistance: California Technical Bulletin 117, Section E; CS-191-53, Class 1; BIFMA X5.7-1991; UFAC, Class 1; B. S. 5852 Part 1: 1979 Ignition Source 0, smoldering cigarette. 

Fabrics by Absecon Mills, Inc. Fabric performance symbols indicate that a fabric performs to commercial furniture manufacturing standards and passes all applicable testing as specified by the Association for Contract Textiles (ACT).

9/2012 | For additional cards or memo samples:

email samples@absecon.com or call 1-877-356-4557



Absecon Mills is focused on being a responsible corporate entity and we are continually striving to find ways to help preserve our environment, increase energy efficiency and reduce waste. Our mode of manufacturing is specifically designed to prevent damage to the environment. Our products are woven using wind power and many are constructed with polypropylene (a by-product of gasoline manufacturing, utilizing post-industrial waste) and recycled polyester, which helps keep post-consumer waste in the material stream and out of landfills. Absecon offers finishes that use ten times less fluorocarbons than conventional finishes and are SCS Indoor Advantage Gold certified. We participate in a fabric recycling program and work hard to lessen our footprint on the environment. For more information on our green initiatives, please visit www.absecon.com



WOVEN WITH WIND POWER

Colors may vary slightly from dye lot to dye lot.

