

[FOUNTAIN STREET]
FOR IMMEDIATE RELEASE

2022 Fountain Street Annex

Annex Membership Exhibition Series
April, May, July, September 2022

FOR PRESS-READY IMAGES CONTACT: Marie Craig at fountainstfineart@gmail.com, (774) 286-1800



Boston, MA—Fountain Street Gallery is excited to announce its 2022 Annex exhibition series featuring twelve regional artists. In its fifth year, the Annex is a section of the gallery where work is featured by artists seeking gallery experience and exposure in the Boston area. This year's exhibitions will take place during the months of April, May, July, and September. Each Annex exhibit features three artists whose work relates conceptually, visually, and/or through material and process.

The 2022 featured artists are: Pamela Chiasson, David Covert, Patricia Crotty, Molly Dee, Jim Fenzel, Ellen Foust, Margarita Krylova, Elisa Lanzi, Jaeok Lee, Gerry Menz, Amanda Millis, and Robert Sullivan. An opening reception will be held each month in conjunction with the SoWa First Friday Art Walk and our main gallery exhibition opening.

[FOUNTAIN STREET]
FOR IMMEDIATE RELEASE

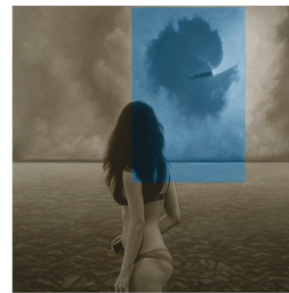


[L] Molly Dee, *Ausra*, spray foam, plaster, joint compound, acrylic paint

[M] Gerry Menz, *Study 2*, acrylic and collage

[R] Amanda Millis, *Cape Window*, oil on panel

April opens our Annex exhibition series with three artists whose work responds to form and light. Molly Dee, a sculptor, and Gerry Menz, a painter, both have a focus on the human figure. Amanda Millis responds to the landscape and interiors.



[L] David Covert, *Blue Honey*, mixed media

[M] Patricia Crotty, *Flora 30*, oil on canvas

[R] Robert Sullivan, *Vanitatum*, oil on panel

A focus on capturing divergent forces takes over the Annex in **May**. Robert Sullivan highlights the shifting and changing meaning inherent in his work. Patricia Crotty's work hovers between representation and abstraction. David Covert records a world of invisible forces and visible constraints.



[L] Margarita Krylova, *Bus Story - Pskov to Pechory*, ink, oil on canvas

[M] Jaeok Lee, *Marriage*, clay, silk, cotton

[R] Pamela Chiasson, *Crown of Beauty*, mixed media on paper

In **July**, we see artists Margarita Krylova, Jaeok Lee, and Pamela Chiasson explore the joining of the real and the intangible. Their works serve as metaphor, whether mediating between the real and the imagined, connecting with the essence of a cultural past to revitalize it with personal values, or expressing the artist's connection to creation through the Spirit.



[L] Elisa Lanzi, *Shelter in Place 8*, monotype, collage

[M] Ellen Foust, *Bike Rack*, archival pigment print

[R] Jim Fenzel, *Mansard I*, acrylic and acrylic marker

Abstracted presentations of the world and the use of strong graphics come together in the work of artists Elisa Lanzi, Ellen Foust, and Jim Fenzel. In **September's Annex** exhibit each artist takes the light, color and form from the world around them to create compelling visual experiences.

About Fountain Street

Fountain Street is a contemporary gallery in the SoWa Art + Design District of Boston. We exhibit a wide array of media from over 30 emerging and mid-career artists in both our main and annex galleries. Founded in 2011, our passion has always been about connecting art seekers and makers through thoughtfully curated exhibitions, juried shows, collaborative projects and installations. Our commitment to diversity, equity and inclusion is reflected in the media that we exhibit, artists and curators that we promote, and audiences that we seek to attract.

Contact

Marie Craig, Director, (774) 286-1800, marie@fsfaboston.com

[FOUNTAIN STREET]
FOR IMMEDIATE RELEASE

Fountain Street Gallery, 460c Harrison Ave. #2, Boston, MA 02118 www.fsfaboston.com