

Rieke Elementary School

Parent and Student Handbook & Calendar



2016-2017

CHARACTER COUNTS AT RIEKE!

Trustworthiness: To act in a manner that makes one worthy of confidence

Truthfulness: To act with personal responsibility and mental accountability

Active Listening: To listen with attention and intention

No Put-Downs: To never use words, actions and/or body language that degrade, humiliate, or dishonor others

Personal Best: To do one's best given the circumstances and available resources

Rieke students will practice these Lifelong Guidelines to ensure that each student's attitude and emotional state are ready for optimum learning. These Guidelines provide consistent boundaries and expectations for one's behavior and performance.

Looks like:

accountability, caring, cheerfulness, citizenship, cleanliness, common sense, communication, conservation, cooperation, courage, curiosity, dependability, effort, fairness, flexibility, forgiveness, friendship, gratitude, health, honesty, initiative, integrity, kindness, leadership, loyalty, orderliness, organization, patience, perseverance, pride, problem solving, purpose, resourcefulness, respectful, responsibility, safety, self-control, self-reliance, sense of humor

From: Tools for Citizenship and Life: Using the ITI Lifelong Guidelines and Lifeskills in your Classroom by Sue Pearson. Copyright 2000 Susan Kovalik and Associates, Inc.

LETTER FROM THE PRINCIPAL

Dear Rieke Families,

I am so excited to welcome you to the 2016-2017 school year! The school is shiny clean thanks to our amazingly hard working custodial crew and teachers are ready to begin a positive and successful year for our students. Our partnership with families is one of the strengths of this school community and the purpose of this handbook is to help you be informed so you can play an active role in the support of your student.

This Handbook/Calendar offers helpful information about Rieke School. Essential dates and phone numbers are also listed.

As the school year continues, please visit our website at <http://www.riekepta.org/> for current updates.

The staff at Rieke is committed to assisting all students in reaching their full potential within a joyful, stimulating learning environment. We challenge students and, at the same time, provide a school atmosphere that makes cooperation and teamwork essential to the learning process. Our goals are best met in a setting of high academic and behavioral expectations, where each child is known as an individual and the focus is on strengths and excellence. We believe each child deserves encouragement, support and a sense of well being. We want all Rieke students and their families to feel welcome, and for students to develop and maintain a lifetime love of learning and fulfill their potential as competent citizens and caring people.

Volunteers are an important part of school life here at Rieke. Please contact your child's teacher or the PTA volunteer coordinator if you have time to contribute. The energy and enthusiasm generously donated by our many volunteers is a tremendous advantage for our students. For more information on Rieke volunteer opportunities please contact us at: **Volunteer@RiekePTA.org**

Our school newsletter, the "*Rieke Rocketeer*" is sent out electronically monthly as well as posted on our website. Let the office know if you need the newsletter in a different format. Please get into the habit of reading the *Rocketeer* regularly. We rely on it to communicate important and timely information to you. If you have unanswered questions, or a concern, please give us a call or email. We want to hear from you! My goal this year is to ensure there is clear, consistent, and informative communication.

I am looking forward to getting to know you and our students. I feel very fortunate to be working in such a strong, caring community. I'm positive that this is going to be a great school year!

Sincerely,

Sarah Lewins, Principal

slewins@pps.net

SCHOOL STAFF

Sarah Lewins.....	Principal	slewins@pps.net
Zachary Prichard	Principal's Secretary	zprichard@pps.net
Lynda Gordon.....	School Secretary	lgordon@pps.net

Grade Level.....	Name	Room #	Ext	email
Kindergarten.....	Julianne Reddekopp.....	7	76307	jreddeko@pps.net
Kindergarten.....	Laura Jackson.....	8	76308	ljackson1@pps.net
Kindergarten.....	Michelle Spohn.....	6	76306	mspohn@pps.net
1.....	Alicia Baker	1	76301	abaker1@pps.net
1.....	Julie Smith.....	12	76312	jsmith2@pps.net
1.....	Eric Swehla	11	76311	eswehla@pps.net
2.....	Jill Rebholz.....	10	76310	jrebholz@pps.net
2.....	Brad Waters	2	76302	bwaters@pps.net
2.....	Michael Plein	14	76314	mplein@pps.net
3.....	Maia Allen	3	76303	mallen@pps.net
3.....	Kyla Walker	21	76321	kwalker@pps.net
3.....	Kerrie Waymire.....	4	76304	kwaymire@pps.net
4.....	Sandy Donnelly	19	76319	sdonnelly@pps.net
4.....	Jeff Sturges.....	22	76322	jesturges@pps.net
5.....	Linda Austin	17	76317	laustin@pps.net
5.....	Betsy Early	20	76320	early@pps.net
5.....	Sean Pollock.....	18	76318	spollack@pps.net
Art.....	Jill Mitchell.....	15	76315	jmitchell@pps.net
Cafeteria.....	Daureen Morris.....	Cafeteria	76335	dmorris@pps.net
Counselor.....	Ian Johnstone.....	Nurse room	76334	ijohnstone@pps.net
Custodian	Maribel Vidal Ambrosio....	boiler room	76336	mvidalam@pps.net
Educational Assistant	Beth Nelson.....			bnelson@pps.net
ESL	Betty Carter-Widyaratne	5	76305	bcarter@pps.net
Learning Center.....	Janet Stearns-Gannett.....	5	76305	jstearns@pps.net
Library Assistant	Jayne Smith	Library	76309	jsmith@pps.net
Media Specialist	TBA			
Nurse.....	Kim Bittleston	nurse room	76334	kbittles@mesd.k12.or.us
Occupational Therapist.....	Debbie Angle.....	5		dangle@pps.net
Para Educator.....	Virginia Ferrer-Burgett	5		vferrerb@pps.net
Para Educator.....	Nina Hartsel.....	5		nhartsel@pps.net
Para Educator.....	April Sadler-Nieman.....	5		asadlernieman@pps.net
PE	Valoree Lancaster	Gym	76324	vlancaster@pps.net
School Psychologist	Melissa Kirkpatrick	5	76333	mkirkpatrick@pps.net
Speech/Language Pathologist...McKenna Miller		5	76337	mmiller4@pps.net
Technology support.....	Jani Colasurdo	tech lab	76338	jcolasur@pps.net

GENERAL INFORMATION

SCHOOL HOURS

Grades	Opening	Tardy	Dismissal
Grades K,1,2,3,4,5	8:35 a.m.	8:45 a.m.	3:00 p.m.

School begins promptly at 8:45 a.m. Please have your child in the classroom and ready to learn by that time.

Students and parents are asked to wait outside until the doors are opened. During inclement weather, they may wait in the front hallway. Please do not leave children unattended before and after school hours because there is no supervision. We appreciate your cooperation to provide a safe environment for our students. Parents who need to take their child from school during school hours must check them out through the school office. This procedure is to ensure the safety of students.

STUDENT ABSENCES

If your child is not going to be at school call the school office and report the absence and the reason for the absence before 9 am. This is the only way that we can insure we get the correct information in a timely way and help you avoid the stress and anxiety of the auto-dialer calling and tell you your child is not in school. You can call the office anytime to report an absence at 503-916-5768 or email riekeattend@pps.net.

PARKING LOT SAFETY

For the safety of our children and the entire Rieke Community, please follow these parking lot guidelines:

- Plan ahead for drop off and pick up. Use all marked parking spaces available in the parking lot.
- If you are parked facing Wilson, please walk your student to the Rieke-side sidewalk.
- No student should cross the parking lot un-chaperoned.
- Drop off or pick up should not occur in the driveway.
- Do not block the driveway or turn around circle.
- White stripes and No Parking signs mean just that, all hours, all days.
- Please use cross walks

SCHOOL VISITATIONS

Parents are welcome to visit our school! It is important that you sign in at the office upon arrival so that we know you are in the building. We appreciate your cooperation with this request.

GENERAL INFORMATION

BUS SCHEDULES & INFORMATION

Most neighborhood students living more than one mile from Rieke qualify for bus transportation. Prior to the start of the school year, the PPS Transportation Department makes an effort to connect with families who qualify for services. This may include a mailing or a visit by a bus driver. PPS sets the bus routes for our school. If your address does not fall in a safe pick-up location, you may request that a stop be added to a route. Please contact the Transportation office with any questions at 503-916-6901. 2016-17 bus schedules are available in the school office and are online at the Transportation website.

In the morning, bus riders are met at the curb by a Rieke staff member. Similarly, students in grades K-2 are escorted to the bus at the end of the day and students in grades 3-5 are released from class to the bus. A Rieke staff member is at the curb monitoring the riders. Students in grades K-2 must have a visible bus tag for the entire school year. Students in grades 3-5 must use a bus tag for the first 8 weeks of school. This assists drivers in delivering students to the appropriate destination.

SCHOOL MEALS

Portland Public Schools provides students healthy and balanced meals at the following prices:

Breakfast:	Full Price - \$1.35	Adult - \$2.10	Breakfast is available beginning at 8:35
Lunch (includes milk):	Full Price – \$2.70	Reduced – \$0.40	Adult \$4.20
Milk only:	50¢		

Rieke participates in a computerized lunch ticket system. Families pay for lunches in advance and children withdraw from their account whenever they buy breakfast, lunch, or a milk. You can set up an account through a service provided by PPS Nutrition Services called www.mylunchmoney.com where you can monitor usage and add money online. You will need your student's student identification number, please call the office and we will provide this to you. If you prefer, you can leave a clearly identified check or cash for your child's meals in the **cafeteria mailbox in the school office**. Please make every effort to keep your child's account current.

Students may qualify for free or reduced priced meals depending on parent's income or status (Food Stamps or Aid to Dependent Children recipients, Foster Child Care provider, etc.). We urge you to complete a meal application form if you think you may qualify for free or reduced price meals. Please call Nutrition Services hot line at 916- 2000, Ext. 3399, or visit www.pps.k12.or.us/departments/nutrition for additional information.

FIELD TRIPS

A permission slip will be sent home for each school sponsored field trip. We must have a signed permission slip by a parent/ guardian to allow a child to leave school. We cannot accept handwritten notes or phone calls in place of the field trip form.

GENERAL INFORMATION

INCLEMENT WEATHER

There are three possibilities due to bad weather. First, schools can be closed. Second, schools can be on a two-hour late opening. On late opening days, school begins at 10:45 a.m. for students. Please do not send your children to school before this time. Thirdly, early dismissal may be called. It is imperative that your child knows what to do in case of an early dismissal and that emergency record are kept current.

You may access current information regarding schedule changes on the Portland Public Schools website: www.pps.k12.or.us.

The following radio/TV stations also carry PPS schedule change information:

- FM – KBPS 89.9; KGON 92.3; KXL 95.5; KISN 97.1; KUPL 98.5; KWJJ 99.5; KKRZ 100.3; KINK 101.9; KKCW 103.3; KXYQ 105.1; KMJK 106.7
- AM – KGW 620; KXL 750; KWJJ 1080; KEX 1190; KUPL 1330; KBPS 1450; KMJK 1550; KFX 1520
- TV – KATU TV - Channel 2; KOIN TV - Channel 6; KGW TV - Channel 8

We ask that you please avoid calling the school during inclement weather so that our phone lines are free to receive closure information.

CONTACTING YOUR CHILD'S TEACHER

You may contact your student's teacher by either emailing them (listed below) or calling the school office directly and using the voice mail system to leave a message. The office number is 503-916-5768. However, if you are trying to notify a teacher about a student's change of plans for afterschool, we ask that you contact the school office directly as many teachers do not get a chance to check voice mail until after school.

USE OF TELEPHONE

The school telephone is a business telephone for the school. Except in cases of emergency, we hesitate to call students or teachers from the classroom to talk on the telephone. The office will be glad to relay important messages. However, we ask that parents avoid calling the school on a regular basis to communicate messages regarding babysitting or supervision changes unless an emergency exists. Students will only be allowed to use the phone for urgent calls. If necessary, these messages should reach the office by 2:30 p.m., well before our 3:00 p.m. dismissal time. Thanks!

CHILD CARE

Vermont Hills Family Life Center (503-452-8633) provides before and after school care. Vermont Hills is on-site at Rieke. After school transportation to Portland Jewish Academy (503-452-3431) childcare is also offered through the Middleman Jewish Community Center.

GENERAL INFORMATION

HOMEWORK POLICY AND EXPECTATIONS

Homework holds a definite and meaningful place in the educational program. Homework is an extension of classroom work and reinforces the concept that education is a full-day and life-long process.

- Homework reinforces school learning experiences.
- Homework can help develop independent work habits, encourage responsibility, refine study skills, and provide opportunities for creativity.
- Homework assignments can serve as a means of providing a bond of common effort between parent, child, and teacher.

Out-of-class tasks that a student is assigned as an extension of classroom work should increase in complexity and length with the student's maturity. Homework assignments should be varied to account for individual interests, abilities, and learning styles of the students.

- Practice assignments provide opportunities to apply recent learning or to reinforce newly acquired skills.
- Preparatory homework furnishes background information for the following day's class activities.
- Extension assignments encourage individualized and imaginative pursuits of knowledge.

Notes:

- Some teachers give weekly homework packets which allow families flexibility in scheduling homework.
- Individual modifications/accommodations may be made for students as appropriate.
- Classroom teachers develop their own policies for late assignments. For excused absences, the general rule is one day make up for each day missed. For extenuating circumstances, please work with the classroom teacher to develop a plan.

HOW CAN PARENTS HELP?

- Provide time each day to work with your child, talk about school, and give assistance as needed.
- Provide a home study environment that is well lit, quiet and comfortable. Keep study materials nearby. Some children study better with soft music or background noise, so try to accommodate your child's preferred learning style.
- Make sure your child is well rested and fed and has had time to wind down after school. Also, avoid scheduling homework right before bedtime when children may be too tired to do their best.
- Avoid doing the homework yourself. Doing homework for you child sends the message that he or she is incapable of doing the work and that perfection is the main objective. Doing homework should help children plan, manage, and complete work by their selves.
- Help your children learn to be responsible for remembering their assignments, completing their work, and returning their materials to school on time.
- Contact the teacher if you have questions about an assignment or the homework expectations.



GENERAL INFORMATION

PERSONAL PROPERTY

Students are encouraged not to bring personal property to school. It may be lost or stolen. Toys, dolls, headsets, etc., should remain at home. In the interest of safety, skateboards, scooters, and rollerblades are not allowed at school. Any items which could be mistaken or used as weapons, including guns or toy guns, bullet shells or knives will be confiscated and may be reported to the police. There is a strict no weapons policy in Portland Public Schools. Students will be suspended if they are found with a knife in their possession, including Swiss Army Knives and other small pocketknives.

LOST AND FOUND

A large quantity of jackets, sweaters and other items accumulate at school. If these items are labeled, they have a good chance of being returned. Lost and found articles are kept in a closet in the hall by the gym. All items will be periodically displayed for students; parents are invited to check lost and found articles also.

LABEL ALL OUTERWEAR CLOTHING

Please put your child's name on all clothing and check the lost and found as soon as possible when something is missing. Periodically, lost and found is displayed on tables in the front hall to give parents a chance to recover lost items. If a name is on the item we make an effort to get it back to your child. If not marked or claimed, they are washed and sent to the Portland Public School Clothing Closet for those in need.

IMPORTANT DATES AND ACTIVITIES

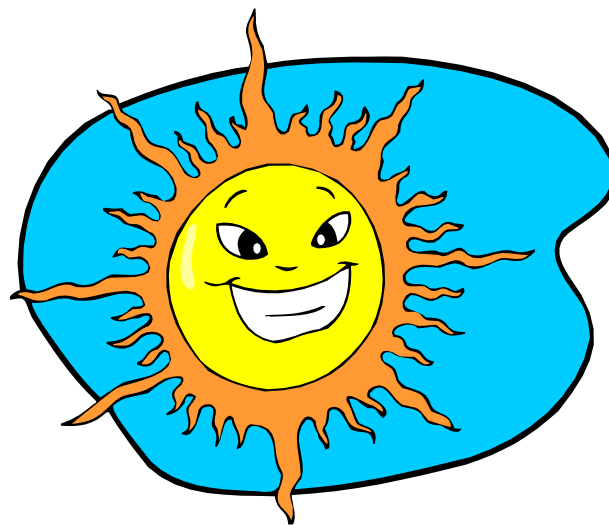
SEPTEMBER FAMILY PICNIC

A truly unique Rieke tradition! The entire school community gathers on our playground to celebrate the start of school. PTA sponsors this fun event. This year it will be on Thursday, September 8, 6:00-8:30p.m.

LATE OPENINGS - 3RD WEDNESDAYS (WACKY WEDNESDAY)

All PPS Elementary and Middle schools will open two hours late on the 3rd Wednesday of the month (no late opening in November and December) to allow time for staff professional development. School buses will also run on a 2 hour delay. We will these use dates for our "Wacky Wednesday" school assemblies beginning at 10:45.

Rieke open at 10:35 and tardy bell will be school at 10:45 on the following dates:
September 21, October 19, January 18, February 15, March 15, April 19, May 17



IMPORTANT DATES AND ACTIVITIES

GRADING PERIODS

1st Quarter August 29– November 3, 2016
2nd Quarter November 7, 2016– January 26, 2017
3rd Quarter January 30, 2017 – April 6, 2017
4th Quarter April 10, 2017 – June 9, 2017

PARENT/TEACHER CONFERENCES

Parent/Teacher Conferences will be held on Wednesday, November 9 & Thursday November 10. There will be no school on these two days as well as no school on Friday, November 11 due to the Veteran’s Day Holiday. Please plan to attend your child’s conference so that the home-school partnership is strengthened. This is an extremely helpful interaction that assists teachers in getting to know their students. Note there will be no school on Wednesday November 23 to compensate staff for the two evenings of conferences.

CELEBRATING SPECIAL FRIENDS

Rieke students are encouraged to invite their special friend, including grandparents or other adults in their lives, to attend the event hosted in each classroom to see students showcase their work. Each teacher will advertise these events well ahead of time during the school year. Events will also be announced in the *Rocketeer* newsletter.

RUN FOR THE STARS (Science, Technology, Art, and Reading for Students)

Each spring students and staff participate in a spring jog-a-thon. The Run for the “STARS” (Science, Technology, Art and Reading for Students) raises funds to be used to advance technology curriculum at Rieke, as well as to provide enriching experiences in visual and performing arts, dance, sculpture and performance. **The Run for the “STARS” is Monday, April, 10** (Rain Date is April, 11)

STATE ASSESSMENT

Smarter Balance is one of two multi-state assessments designed to align with the Common Core State Standards adopted nationwide. These tests in math, English language arts, and science help determine how well students are progressing towards those standards. The tests also help evaluate the success of instructional programs. Smarter Balance is an annual test for students in grades 3-5 and takes place during April and May at Rieke.

HEALTH AND WELLNESS INFORMATION

ACCIDENT AND ILLNESS

Only first aid care may be given at school. In case of serious accident or illness, we will:

1. Contact parent(s) or legal guardian,
2. Contact the given emergency number(s),
3. Contact Emergency Medical Response (911).

Please let us know as soon as possible if there is any change in your home, work, or emergency numbers. It is important that the school has accurate records for illnesses and emergencies.

CONTAGIOUS CONDITIONS

To decrease the spread of contagious conditions in schools:

- Tell the school if your child has a contagious disease such as chicken pox or pertussis (whooping cough)
- Do not send your child to school with a rash, fever, diarrhea, or vomiting. When returning to school from these conditions, students **MUST BE 24 hours fever free with no medication and 24 hours diarrhea and vomit free.**
- To protect the health of students or other persons, certain diseases are reportable to the health department per law (OAR 333-18-000). At such times records and information may be disclosed to public health officials.

MEDICATION ADMINISTRATION AT SCHOOL

The school's nurse provides consultation about medication administration that must occur at school. **Only medication that is necessary to be given during the school day will be kept at school.** Please ask your medical provider if your child's medication can be given outside of school hours. This is safer for your child and easier for you. By Oregon law, if medication must be given at school you must:

- Provide written permission (**forms available at school**). Any changes to the medication will require the parent/guardian to update the medication form at the time of the change.
- Make sure all medication (prescription and over the counter) is in its original container and marked with the student's name. Ask the pharmacist for an extra bottle for school when getting prescriptions.
- **All medication must be delivered to school by the parent/guardian or responsible adult designated by the parent or guardian.** Students may not keep medications with them unless they are age-appropriate for the responsibility, have been identified as a self-manager, have written parent permission, and are cleared by the principal to do so.
- Make sure the school has an adequate supply of all medications required by your child.
- Pick up the medication when it is no longer needed at school. **All medication not picked up by the end of the year will be destroyed.**

To provide for your child's special medical or mental health needs, for example diabetes, seizures or school anxiety, it is **important to promptly tell** the school.

HEALTH AND WELLNESS INFORMATION

RIEKE SCHOOL WELLNESS POLICY

The 2011 Wellness Committee wrote the following Wellness Policy for Rieke Elementary school in accordance with the PPS Wellness Policy 3.60.060 in order to promote and protect children's health, wellness and ability to learn by supporting behaviors that include healthy eating and physical activity.

Policy regarding the use of food in the classroom:

Birthday Celebrations: Birthday celebrations will not include food. Student's birthdays can be recognized by non-edible rewards such as stickers or through the sharing of stories, songs, dance or other activities deemed appropriate by the classroom teacher. Birthday party invitations are not to be handed out at school.

Other Classroom Celebrations (Harvest/Halloween, Valentine's, End of the Year parties, etc): Food can be part of these celebrations but healthy alternatives to traditional sweets, such as fruits, yogurt, or cheese and crackers should be served.

Policy regarding physical activity:

Students shall not be regularly denied participation in recess or PE as a form of discipline or for classroom make-up time.

SAFETY PATROL

Safety Patrols will be on duty at the following times: 8:35 to 8:45 a.m. and 3:00 to 3:05 p.m. The fifth graders who serve on the patrol are selected for their responsible behavior and trustworthiness. They are required to follow the rules to remain on the patrol.

RESOURCES

BUILDING SCREENING COMMITTEE (BSC)

The Building Screening Committee is assembled when a teacher or parent has an academic or behavioral concern about their student. The BSC is made up of school staff and the parent. The BSC collects information about the student and meets to discuss strategies and develop a plan to support the student. For example, if the issue is behavior, the BSC may ask for data and suggest ways to lower student/teacher frustration or change surroundings. For an academic concern, the team may brainstorm ideas for changing instruction methods, adapting curriculum, or changing the environment. All interventions are designed to help the student progress in the general education curriculum. If the interventions are successful, the plan continues. If the interventions and adjustments are not enough to support the student, the BSC will refer the student to the Evaluation Team. The Evaluation Team will determine whether to pursue a Special Education evaluation or refer to other sources. The parent is informed and involved throughout the screening meetings and the assessment process.

RESOURCES

SCHOOL PSYCHOLOGIST

The school psychologist functions as the school's primary link with the district special education services. She serves as a member of the Building Evaluation Screening Committee that meets regularly to determine plans of action for students with educational needs. This specialist is a member of the Special Education team.

LEARNING CENTER (LC)

Students who qualify for special education services in reading, social emotional skills, writing, and/or math, are eligible to receive services from the LC staff. Supplemental instruction is provided to students, which is coordinated with homeroom teachers and with other support programs. The Learning Center teacher is a member of the Special Education Team.

SPEECH AND LANGUAGE

Speech and language supports are provided to students who qualify for communication services such as articulation, fluency, voice or language difficulties. The speech/language pathologist diagnoses and provides intervention for those students who are eligible for service based on Oregon State eligibility criteria. This specialist is a member of the Special Education Team.

SPECIAL CLASSES

VISUAL AND PERFORMING ARTS

Opportunities for creative expression and knowledge in the arts are integral to instruction at Rieke. As the arts are integrated and infused into our curriculum, children are given experiences which build skills and appreciation for a variety of art forms. Assemblies and artist residencies enhance the classroom experience. This year all students will be participating in Arts residencies through the Right Brain program. For more information on Right Brain visit <http://therightbraininitiative.org/>. All classes will receive art instruction from our new Art teacher each week.

PHYSICAL EDUCATION (PE)

PE programs emphasize fitness and developmental skills in addition to various sport and movement activities. Self-confidence is enhanced by goal setting and the progress made toward reaching these goals. We currently have a full time PE specialist who will provide both dance/movement classes as well as the traditional PE classes.

MEDIA CENTER

The Rieke Media Center provides rich experiences for students as they locate, evaluate and synthesize information from print and electronic resources. Our half time Teacher Librarian provides direct instruction in literacy support and our half time Media Assistant provides support to students and teachers in the selection of literature to inspire and extend classroom instruction.

RESOURCES

TECHNOLOGY

In our computer lab students receive whole group instruction in technology tools integrated into core content to enhance and extend learning. Students have access to classroom computers as well. Our technology support instructor assists teachers and students in their lab experiences.

TALENTED AND GIFTED PROGRAM

The Rieke School TAG Plan provides a wealth of information on instruction and services for TAG students. It is available on the TAG bulletin board in our main hallway, and individual copies are available on request. Your child's teacher is primarily responsible for the development, implementation, and assessment of TAG services. If you have questions or would like additional information, please contact your child's teacher, our TAG Coordinator Julie Smith and/or the principal.

VOLUNTEERS IN PORTLAND SCHOOLS

Volunteers contribute in many important ways at Rieke, such as coordinating family activities and events. They assist the school's staff by relieving them of many non-teaching tasks. Instructional support is also enhanced by volunteers providing additional assistance in the classroom. Volunteers play a vital role in the education of our students. We thank them for the many hours donated to our program. Contact the Rieke Volunteer Coordinator, to discover how you can help!

All volunteers need to sign-in when first entering the school. A special computer is kept in the office for this purpose. Remember to sign-in and wear your VOLUNTEER BADGE. If you have any questions, or need help, see our School Secretary.

DISTRICT RESOURCES

BEFORE AND AFTER SCHOOL OPTIONS

Vermont Hills Family Life Center 503-452-8633
Portland Jewish Academy Child Care..... 503-452-3431

PORTLAND PUBLIC SCHOOLS

Wilson Community Schools Area Office 503-916-6540
Blanchard Education Service Center 503-916-2000
Robert Gray Middle School..... 503-916-5676
Wilson High School 503-916-5280
PTA Clothes Closet 503-916-5840 ext. 266
Student Transportation 503-916-6901



COMMITTEES AND ORGANIZATIONS

MARY RIEKE PARENT TEACHER ASSOCIATION (PTA)

The Rieke PTA is a chapter of the Oregon Parent Teacher Association, and we are here to help you and your child have the best experience possible at Rieke!

Active involvement in your child's educational experience is one of the most important things you can provide to help your child succeed in school, both academically and socially. The mission of the Rieke PTA is to promote parent involvement in our children's educational experiences, assist parents in developing the skills they need to raise and protect their children, and to support and advocate on behalf of our children. Our amazing PTA members help plan, fund and run educational activities and programs, volunteer in the school, and advocate within our community. We create opportunities which help foster our children's growth and development through elementary school.

Some of the diverse and important range of programs developed and/or funded by the Rieke PTA include: funding Technology Instruction; provision of a library book budget; provision of cash grants for teachers; assistance for children and families in need; publication of the Student Directory; dissemination of important announcements and information via email and the school newsletter (The Rapper); Chess Club; organization and planning for the Back to School Picnic, Teacher Appreciation Day, the Science Fair, the Art Fair and the end-of-year Carnival, along with many other activities. These functions all enhance our children's experience at Rieke, and add to the richness of our community.

How can you be a part of this community? It's simple. Join the Rieke PTA! Fill out the membership form provided in your Welcome Packet, or contact our Membership Coordinator, Christine Surratt (christine.surratt@gmail.com). Come to our monthly meetings if you can! All are welcome. The most important thing is to be involved in whatever way you can. We know life can be complicated, and many of us are busy. That's why we offer the opportunity to participate in a variety of ways. Hopefully one of them will work for you. We look forward to meeting you, have a great year!

Questions? Please contact us any of us:

PTA Board Members, 2016-2017

Co-Presidents – Holly Ingram
Brian Unflat

Co-Vice Presidents – Paul Higgins
Sophia Costa

Secretary – Kes Wold

Treasurer – Mike Kale

Membership Coordinator- Christine Surratt

Co-events Coordinators – Joelle Allen
Kimberly Allen

Rieke Foundation liaison–Dana Grigsby

Fundraising Coordinator – Melissa Light

hollylynngram@gmail.com

brian@unflat.com

paulhiggins113@hotmail.com

sndcosta@yahoo.com

kes@radicalization.com

mkale@me.com

christine.surratt@gmail.com

allen.joelle@gmail.com

kimberleyhallen@gmail.com

dana@userfirstweb.com

lightfamily.or@gmail.com



COMMITTEES AND ORGANIZATIONS

SITE COUNCIL

In compliance with the Oregon Educational Act for the 21st Century, the purpose of the school Site Council is to promote, increase and monitor student achievement. The duties of the council include developing a School Improvement Plan, which includes instructional initiatives and plans to support the professional growth of the school's staff. Council activities also include the development and coordination of the implementation of the education act at our school and fostering family involvement in the school.

Rieke's Site Council is composed of three teachers, three parents, and the principal. Meetings are monthly, please check the school website to see scheduled times. You are welcome to attend.

Site Council Members

Stephanie Wieber (Parent)stephaniekw@comcast.net

Open (K-2nd grade Parent)

Open (3rd-5th grade Parent).

Michael Plein (Teacher) mplein@pps.net

Open (K-2nd grade Teacher)

Open (3rd-5th grade Teacher)

Sarah Lewins (Principal)..... slewins@pps.net

THE *IMAGINE* FUNDRAISING PROGRAM

The IMAGINE Program was started in the fall of 2012 to boost the fundraising efforts at Rieke. Most private and now many public schools have a yearly "ASK" to parents in order to provide the level of education and enrichments that we want our kids to experience. The IMAGINE Program was designed to help streamline the fundraising efforts by:

- Eliminating smaller fundraisers that take a lot of time and effort for not very much return.
- Project out what we will be able to fundraise instead of wondering if we will raise the necessary funds.
- Establish Rieke as a solidly funded school which keeps up its enrollment.

The IMAGINE Program works by having parents donate either a monthly withdrawal (by bank or VISA) or a lump sum amount per child. Our ask is \$840/year or \$70/month per child. We understand this may be more than many families are able to do and therefore encourage all of families to participate in any way possible. Our theme is IMAGINE...If We All Work Together. The way this programs works is if we all do what we can.

Rieke is a great community school, we are very fortunate, AND the current educational climate in Oregon is asking parents to do more than ever. We are so thankful for a community that believes in public education for our kids and our futures.

COMMITTEES AND ORGANIZATIONS

THE RIEKE FOUNDATION

The Mary Rieke School Foundation exists to provide financial support to Mary Rieke Elementary. It is affiliated with the Portland Schools Foundation, which is an independent, non-profit organization that plays a vital role in our community to provide funds for schools and advance initiatives that directly support teachers, schools and parent involvement. Historically, our Foundation has partially funded a classroom teacher for class size reduction. Past foundation fundraising activities include an annual auction and a direct-giving campaign; we are currently considering adding additional activities.

Please mark your calendar for this year's fabulous auction to be held on Saturday, March 11 at the Middleman Jewish Community Center. Save the date! For more information on involvement opportunities contact Foundation liaison Dana Grigsby, dana@userfirstweb.com.

There are several easy ways to donate to the Rieke Foundation:

- Send a check to:
All Hands Raised Foundation
2069 NE Hoyt
Portland, OR 97232
- Call 503-234-5404 to make a credit card donation or set up an automatic monthly withdrawal from a bank account.

August 2016

Sunday	Monday	Tuesday	Wednesday	Thursday	Friday	Saturday
	1	2	3	4	5	6
7	8	9	10	11	12	13
14	15	16	17	18	19	20
21	22	23 Teachers return	24	25 K Open House, 4-6:30 pm	26 Schools Closed	27
28	29 1 st day grades 1-5 K screenings PTA Coffee	30 K screenings	31 K screenings			

September 2016

Sunday	Monday	Tuesday	Wednesday	Thursday	Friday	Saturday
				1 1 st Day for K PTA Coffee for K families	2	3
4	5 Labor Day Holiday No School	6	7	8	9 Rieke All School Picnic 5:30-7 pm	10
11	12	13	14	15 Back to School Night, 6:30 pm	16	17
18	19	20 PTA meeting, 6:30 pm	21 Late Opening School starts 10:45	22	23	24
25	26	27	28	29	30	

October 2016

Sunday	Monday	Tuesday	Wednesday	Thursday	Friday	Saturday
						1
2	3	4	5 International Walk and Bike day	6	7	8
9	10	11	12	13	14 State Inservice Day No School	15
16	17	18 PTA meeting, 6:30 pm	19 Late Opening School starts 10:45	20	21	22
23	24	25	26	27	28	29
30	31					

November 2016

Sunday	Monday	Tuesday	Wednesday	Thursday	Friday	Saturday
		1	2	3 End of 1 st grading period	4 Teacher Planning Day No School	5
6	7	8	9 Parent Teacher Conferences 8-8 pm No School	10 Parent Teacher Conferences 8-8 pm No School	11 Veteran's Day Holiday No School	12
13	14	15	16	17	18 Walk, Bike day	19
20	21	22	23 Thanksgiving Break No School	24 Thanksgiving Break No School	25 Thanksgiving Break No School	26
27	28	29	30			

December 2016

Sunday	Monday	Tuesday	Wednesday	Thursday	Friday	Saturday
				1	2 Walk, Bike day	3
4	5	6	7	8	9	10
11	12	13	14	15	16	17
18	19 Winter Break No School	20 Winter Break No School	21 Winter Break No School	22 Winter Break No School	23 Winter Break No School	24
25	26 Winter Break No School	27 Winter Break No School	28 Winter Break No School	29 Winter Break No School	30 Winter Break No School	31

January 2017

Sunday	Monday	Tuesday	Wednesday	Thursday	Friday	Saturday
1	2 New Year's Holiday No School	3	4	5	6 Walk, Bike day	7
8	9	10	11	12	13	14
15	16 MLK Holiday No School	17 PTA meeting, 6:30 pm	18 Late Opening School starts 10:45	19	20	21
22	23	24	25	26 End of 2 nd quarter	27 Teacher Planning Day No School	28
29	30	31				

February 2017

Sunday	Monday	Tuesday	Wednesday	Thursday	Friday	Saturday
			1	2	3 Walk, Bike day	4
5	6	7	8 Connect to K, 6:00 pm	9	10	11
12	13	14	15 Late Opening School starts 10:45	16	17	18
19	20 Presidents Day Holiday No School	21 PTA dinner	22	23	24	25
26	27 Bookfair	28 Bookfair				

March 2017

Sunday	Monday	Tuesday	Wednesday	Thursday	Friday	Saturday
			1 Bookfair	2 Bookfair	3 Walk, Bike day Bookfair	4
5	6	7	8	9	10	11 Rieke Auction
12	13	14	15 Late Opening School starts 10:45	16	17	18
19	20	21 PTA meeting, 6:30 pm	22	23	24	25
26	27 Spring break No School	28 Spring break No School	29 Spring break No School	30 Spring break No School	31 Spring break No School	

April 2017

Sunday	Monday	Tuesday	Wednesday	Thursday	Friday	Saturday
						1
2	3	4	5	6 End of 3 rd quarter	7 Teacher Planning Day No School	8
9	10	11	12	13	14 Walk, Bike day	15
16	17	18 PTA meeting, 6:30 pm	19 Late Opening School starts 10:45	20	21	22
23	24	25	26	27	28	29
30						

May 2017

Sunday	Monday	Tuesday	Wednesday	Thursday	Friday	Saturday
MAY IS WALK, BIKE AND ROLL CHALLENGE MONTH	1	2	3	4	5	6
7 Rieke Art Fair 10-4 pm	8 Teacher Appreciation week	9 Teacher Appreciation week	10 Teacher Appreciation week	11 Teacher Appreciation week	12 Teacher Appreciation week	13
14	15	16 PTA meeting, 6:30 pm	17 Late Opening School starts 10:45	18	19	20
21	22	23	24	25	26	27
28	29 Memorial Day Holiday No School	30 Book Fair	31 Book Fair			



2016-17 School Quarter Calendar

(Subject to possible revision)

Calendars are on the district website: www.pps.net; click on "Calendar" tab.

* Snow Make-Up Days will be added at the end of the school year.



S	M	T	W	Th	F	S
			1	2	3	4
5	6	7	8	9	10	11
	13 PLAN	14	15	16	17	18
19	20	21	22	23	24	25
26	27	28	29	30		

JUNE 2016

S	M	T	W	Th	F	S
					1	2
3	4	5	6	7	8	9
10	11	12	13	14	15	16
17	18	19	20	21	22	23
24	25	26	27	28	29	30
31						

AUGUST 2016

S	M	T	W	Th	F	S
	1	2	3	4	5	6
7	8	9	10	11	12	13
14	15	16	17	18	19	20
21	22	23	24	25	26	27
28	29	30	31			

SEPTEMBER 2016

S	M	T	W	Th	F	S
				1	2	3
4	5	6	7	8	9	10
11	12	13	14	15	16	17
18	19	20	21	22	23	24
25	26	27	28	29	30	

OCTOBER 2016

S	M	T	W	Th	F	S
2	3	4	5	6	7	8
9	10	11	12	13	14	15
16	17	18	19	20	21	22
23	24	25	26	27	28	29
30	31					

NOVEMBER 2016

S	M	T	W	Th	F	S
1	2	3	4	5	6	7
8	9	10	11	12	13	14
15	16	17	18	19	20	21
22	23	24	25	26	27	28
29	30					

DECEMBER 2016

S	M	T	W	Th	F	S
1	2	3	4	5	6	7
8	9	10	11	12	13	14
15	16	17	18	19	20	21
22	23	24	25	26	27	28
29	30	31				

S	M	T	W	Th	F	S
1	2	3	4	5	6	7
8	9	10	11	12	13	14
15	16	17	18	19	20	21
22	23	24	25	26	27	28
29	30	31				

JANUARY 2017

S	M	T	W	Th	F	S
1	2	3	4	5	6	7
8	9	10	11	12	13	14
15	16	17	18	19	20	21
22	23	24	25	26	27	28
29	30	31				

MARCH 2017

S	M	T	W	Th	F	S
1	2	3	4	5	6	7
8	9	10	11	12	13	14
15	16	17	18	19	20	21
22	23	24	25	26	27	28
29	30	31				

APRIL 2017

S	M	T	W	Th	F	S
1	2	3	4	5	6	7
8	9	10	11	12	13	14
15	16	17	18	19	20	21
22	23	24	25	26	27	28
29	30	31				

MAY 2017

S	M	T	W	Th	F	S
1	2	3	4	5	6	7
8	9	10	11	12	13	14
15	16	17	18	19	20	21
22	23	24	25	26	27	28
29	30	31				

JUNE 2017

S	M	T	W	Th	F	S
1	2	3	4	5	6	7
8	9	10	11	12	13	14
15	16	17	18	19	20	21
22	23	24	25	26	27	28
29	30	31				

JULY 2017

S	M	T	W	Th	F	S
1	2	3	4	5	6	7
8	9	10	11	12	13	14
15	16	17	18	19	20	21
22	23	24	25	26	27	28
29	30	31				

Exception Jefferson

ED Early Dismissal (High School only, schools dismiss 2 hours early)

MT Mid-Term Progress Reports Entered into Student System

PLAN Teacher Planning Day

PROF Professional Development Day

START Start of School Year

TR-F High School Transfer Application Deadline

TR-H Elementary/Middle School Transfer Application Deadline

X Schools and Offices Closed

* Prof. Dev. Day or Teacher Plan Day (school decision)

— Snow make-up days - this would move END, GRD, and PLAN days over accordingly

NS/OP Schools closed, district offices open

- AM/PM/EVE Morning/Afternoon/Evening Conferences (no school for students)
- CC Classified Connection (PD for classified employees)
- END End of School Year
- EVE- Optional Evening Conferences (school decision)
- GRD Grading Period Ends
- H Holiday (schools and all offices closed)
- HC Holiday Commemoration (schools and all offices closed)
- INS Statewide Inservice (no school - all 192, 202, 210, 225 & 230 employees off)
- LO (K-8) Late Opening (Grades K-8 only) - Professional Development Time (schools start 2 hours late)

Grading period schedule for 2016-2017 school year

Start of First Grading Period	August 29, 2016	Start of Third Grading Period	January 30, 2017
End of First Grading Period	November 3, 2016	End of Third Grading Period	April 6, 2017
Start of Second Grading Period	November 7, 2016	Start of Fourth Grading Period.....	April 10, 2017
End of Second Grading Period	January 26, 2017	End of Fourth Grading Period.....	June 9, 2017

Employee Work Year 2016-2017

192-Day Employees	August 23 to June 13	225-Day Employees**	August 8 to June 30
202-Day Employees	August 15 to June 19	233-Day Employees**	August 8 to June 30
210-Day Employees	August 8 to June 22	260-Day Employees	July 1 to June 30

****Refer to 2015-2016 Employee Work Year Schedule for July/Aug work day details**

Portland Public Schools Nondiscrimination Statement: Portland Public Schools recognizes the diversity and worth of all individuals and groups and their roles in society . All individuals and groups shall be treated with fairness in all activities, programs and operations, without regard to age, color, creed, disability, marital status, national origin, race, religion, sex, or sexual orientation . — Board of Education Policy 1.80.020-P

Portland Public Schools

Blanchard Education Service Center

501 North Dixon

Portland, Oregon 97227

(503) 916-2000 • www.pps.net