



## Crossing Art Presents

November 1, 2008 - January 31, 2009

**Chee Wang Ng**, *Eat Rice Everyday- Fate*, 2008, watercolor on paper, 12" x 12"



**Marlene Tseng Yu** *Roaming Canyon -19*, 2004 (Roaming Canyon Series), acrylic on paper, 38" x 68"



**Marlene Tseng Yu** *Glacier Rapid Melting*, 2006 (Glacier Melting Series) Acrylic on paper, 38" x 68"



**Marlene Tseng Yu**, *Amber Glow #5* 1994 (Amber Glow Series) acrylic on paper, 42" x 32"



**Chen Gang** *Creation of Adam (filmstill)*, 2001, inkjet print, 2/6, 48" x 32.7"



**Dong Ming Guang**, 我□-女孩 We-Girls, 2003, 玻璃□ 着色 Fiberglass and color  
31.5" x 23.6" x 17.7", edition 8/8



**Zhang Hongtu**, *Last Banquet*, digital printed hand scroll format, painted in 1989, printed in 2003,  
10.5' x 29', Edition of 50



**Gao Yuan** *12 moons*, (Set of 12 photographs), 2008, C- Print, Each set Edition of 6  
15.7" x 17.7"



**Gao Yuan** *12 moons*, 2008, C- Print, 47.2" x 51.2 (Edition of 6)



**Gao Yuan** *12 moons*, 2008, C- Print, 47.2" x 51.2 (Edition of 6)



**Kotaro Fukui**, *Flightless No. 2*, 2005, Indian ink and mineral pigment on Japanese Washi paper, 58" x 19"



**Dong Ming Guang**, *Flower Heart No.2*, 2008, Fiberglass and color, 19.7" x 19.7" x 9.8", edition 2/8



**Dong Ming Guang**, *Ferry*, 2008, Fiberglass and color, 31.5" x 9.8" 9.8", edition 1/8.



**Wei Kang**, *Sanyangkaitai Series #2*, 三羊开泰系列, 2008, oil on canvas, 51.2" x 66.9"



**Wei Kang**, *Sanyangkaitai Series #3*, 三羊开泰系列, 2008, oil on canvas, 51.2" x 66.9"



**Yu Jie** *80s Girls Series*, 2008, C-Print, 61" x 44", edition 6/8 (last print available in edition)



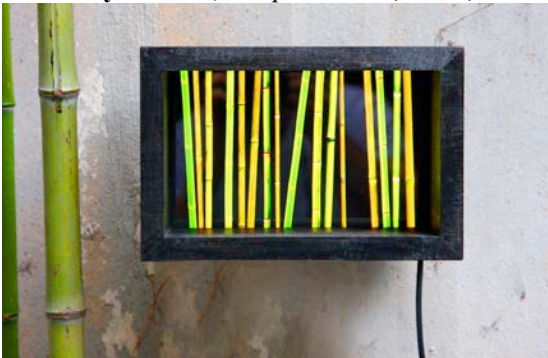
**Wei Kang, *Sanyangkaitai Series #4*, 三羊开泰系列, 2008, oil on canvas, 51.2" x 66.9"**



**Wei Kang, *Sanyangkaitai Series #1*, 三羊开泰系列, 2008, oil on canvas, 51.2" x 66.9"**



**Felix Beyreuther, *Deep China F*, 2008, multi-media, 10" x 6.5", Edition of 8**



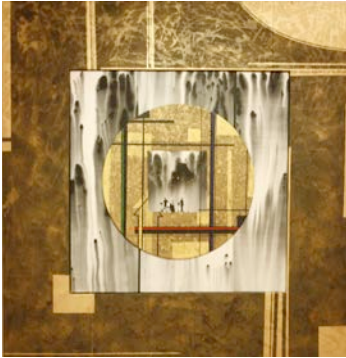
**Felix Beyreuther, *Deep China M*, 2008, multi-media, 10" x 6.5", Edition of 8**



**Lin Shih Pao, *Heavenly Timing, Earthly Advantage, Human Harmony V*, 2008, mixed media, 64" x 64"**



**Lin Shih Pao, *Heavenly Timing, Earthly Advantage, Human Harmony I*, 2008, mixed media, 64" x 64"**



**Lin Shih Pao, *The Cow Turns The Fortune*, 2008, mixed media, 48" x 48"**



**YoYo Xiao, *An Inopportune Moment I*, 2007, digital photo print, 60" x 40"**



**YoYo Xiao, *Migration of Illusion*, 2007, digital photo print, 60" x 40"**



**Lin Shih Pao, *Heavenly Timing, Earthly Advantage, Human Harmony*, 2008, bronze sculpture, 68" x 22" x 20"**



**Chee Wang Ng, *A Pearl of Wisdom in Each Word*, 1999, Lambda Print, 48" x 48"**



**Chee Wang Ng**, *Wise Beyond His Years*, 2000, Lambda Print, 48" x 48"



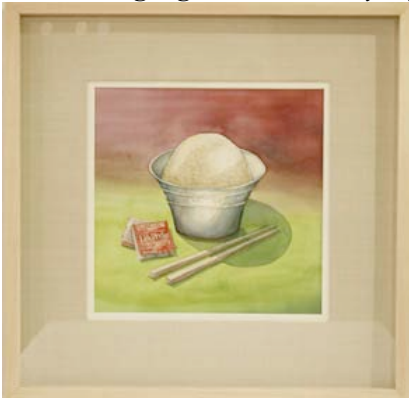
**Chee Wang Ng**, *I Ching Hexagram - Inner Truth*, 2008, mixed media single channel video installation with audio, Dimensions Variable, Running time: 5:24 min/loop



**Chee Wang Ng**, *Eat Rice Everyday- Thirst*, 2008, watercolor on paper, 12" x 12" (Framed)



**Chee Wang Ng**, *Eat Rice Everyday- Sex*, 2008, watercolor on paper, 12" x 12" (Framed)





**Chee Wang Ng**, *Eat Rice Everyday- Living*, 2008, *watercolor on paper*, 12" x 12"



**Chee Wang Ng**, *Eat Rice Everyday- Information*, 2008, *watercolor on paper*, 12" x 12"



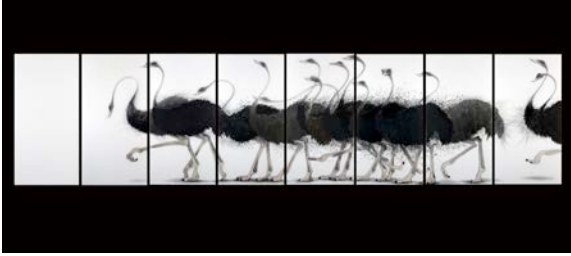
**Chee Wang Ng**, *Eat Rice Everyday- Humor*, 2008, *watercolor on paper*, 12" x 12"



**Chee Wang Ng**, *Eat Rice Everyday- Alert*, 2008, *watercolor on paper*, 12" x 12"



**Kotaro Fukui**, *Flightless No. 1*, 2005, Indian ink and mineral pigment on Japanese Washi paper, 19" x 58"



**Marlene Tseng Yu**, *Turquoise Floating II*, 2000 (Turquoise Floating Series) acrylic on paper, 38" x 68"



**Kotaro Fukui**, *Silent Flowers No. 1*, 2007, Gold foil, Indian ink and natural mineral pigment on Japanese paper, 13.2" x 7.5"



**Kotaro Fukui**, *Silent Flowers No. 3*, 2007, Gold foil, Indian ink and natural mineral pigment on Japanese paper, 6.5" x 18.2"



**Kotaro Fukui**, *Silent Flowers No. 6*, 2008, Gold foil, Indian ink and natural mineral pigment on Japanese paper, 24.2" x 29"



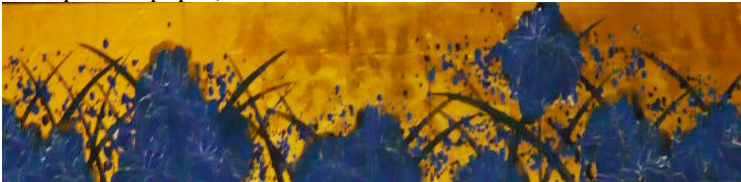
**Kotaro Fukui**, *Silent Flowers No. 9*, 2007, Gold foil, Indian ink and natural mineral pigment on Japanese paper, 25.75" x 35.9"



**Kotaro Fukui**, *Silent Flowers No. 10*, 2007, Gold foil, Indian ink and natural mineral pigment on Japanese paper, 5.9" x 23.7"



**Kotaro Fukui**, *Silent Flowers No. 11*, 2008, Gold foil, Indian ink and natural mineral pigment on Japanese paper, 5.9" x 39.5"



**Kotaro Fukui**, *Flightless No. 6*, 2005, Indian ink and mineral pigment on Japanese Washi paper, 19" x 58"

