

BREED

TRANSCRIPTION BY CHRIS McCAIG ♩ = 160
for more transcriptions - www.cmdrumstudios.com

NIRVANA
DRUMMER: DAVE GROHL

GUITAR INTRO

First line of guitar notation in 4/4 time. It starts with two measures of rests, followed by a series of eighth-note chords.

cresc.

Second line of guitar notation, continuing the eighth-note chord pattern. A wedge-shaped *cresc.* (crescendo) marking is positioned above the staff, indicating an increase in volume.

LOOSE HATS

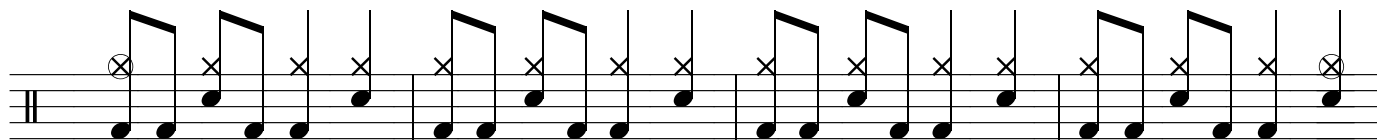
First line of drum notation for 'Loose Hats'. It features a steady eighth-note bass drum pattern with snare hits on the off-beats. Circled 'x' marks indicate cymbal hits on the first and fourth beats of each measure.

Second line of drum notation, continuing the eighth-note bass drum and snare pattern with cymbal hits.

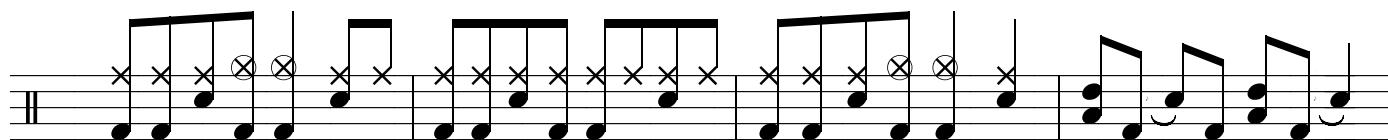
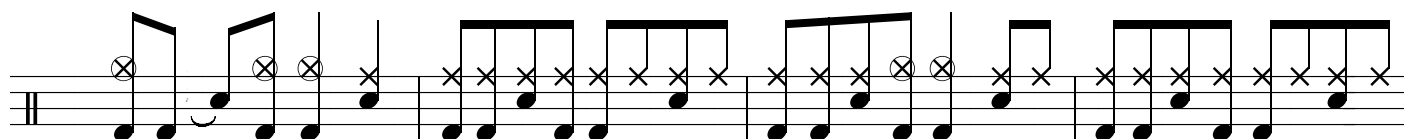
Third line of drum notation, continuing the eighth-note bass drum and snare pattern with cymbal hits. A repeat sign is present at the beginning of this line.

Fourth line of drum notation, continuing the eighth-note bass drum and snare pattern with cymbal hits.

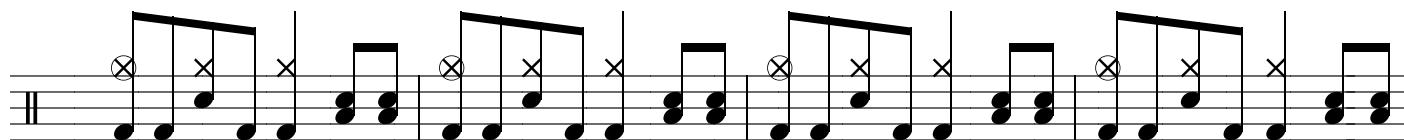
BREED - PAGE 2



RIDE

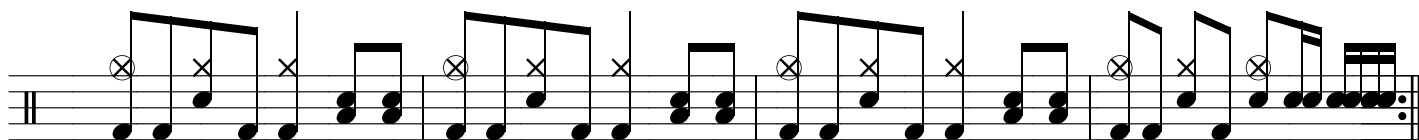


LOOSE HATS



REPEAT 2x

1., 2.



3.

