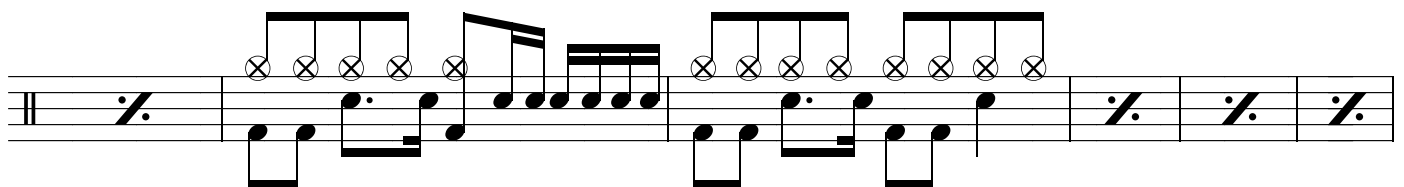
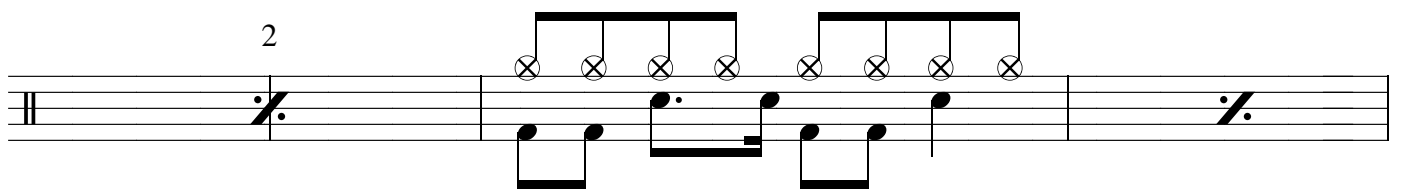
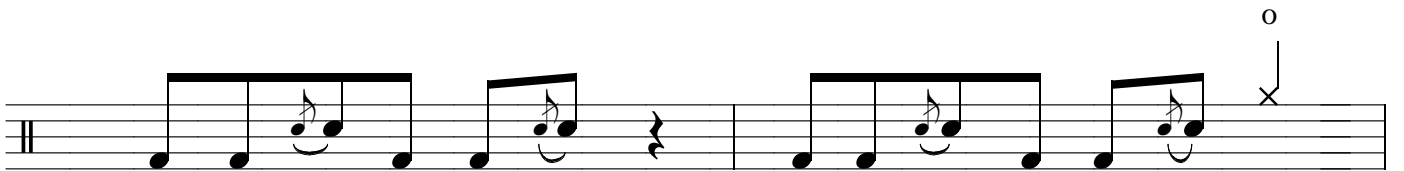
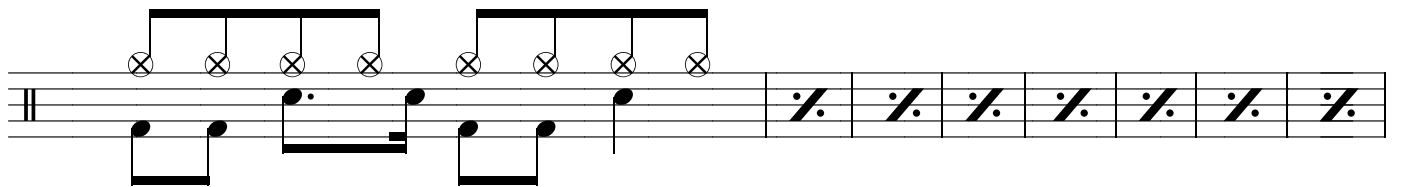
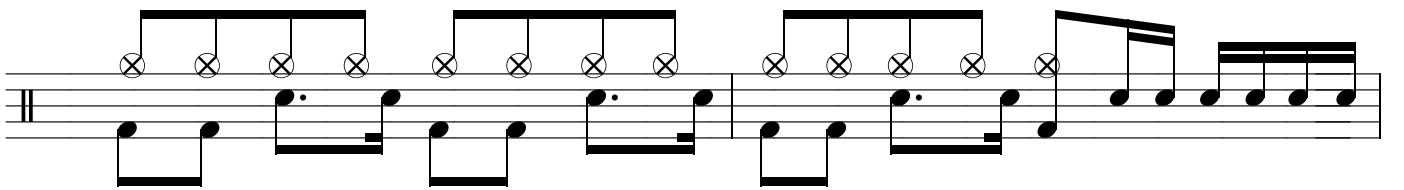
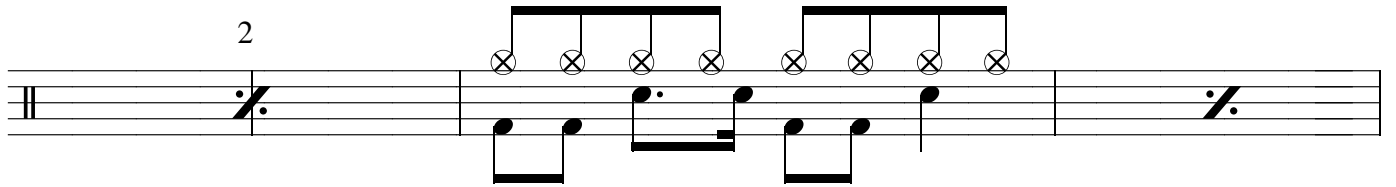
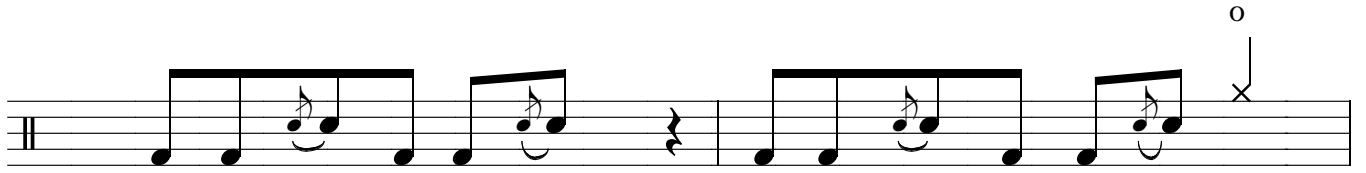


Wake Me Up When September Ends - Page 2



Wake Me Up When September Ends - Page 3

This musical score page contains the following elements:

- Drum Part (Top Staff):** Starts with five measures of rests marked with a slash and a vertical line. It then features a complex rhythmic pattern of eighth notes with 'x' marks above them, indicating a specific drum sound.
- Drum Part (Second Staff):** Begins with a single 'x' mark, followed by rests and a triplet of eighth notes.
- Brushes (Third Staff):** Labeled 'Brushes' and 'p' (piano), it contains a melodic line of eighth notes.
- Change to sticks (Fourth Staff):** Labeled 'Change to sticks', it continues the melodic line from the brushes part.
- Drum Part (Fifth Staff):** Features eighth notes with 'x' marks, followed by three measures of rests marked with a slash and a vertical line.
- Drum Part (Sixth Staff):** Continues the melodic line with eighth notes and 'x' marks, ending with a triplet of eighth notes.
- Drum Part (Seventh Staff):** Features eighth notes with 'x' marks, followed by a double bar line and a slash with a vertical line.
- Drum Part (Eighth Staff):** Continues the melodic line with eighth notes and 'x' marks, ending with a double bar line.
- Drum Part (Ninth Staff):** Features eighth notes with 'x' marks, followed by a double bar line.
- Drum Part (Tenth Staff):** Continues the melodic line with eighth notes and 'x' marks, ending with a double bar line.
- Drum Part (Eleventh Staff):** Features eighth notes with 'x' marks, followed by a double bar line.
- Drum Part (Twelfth Staff):** Continues the melodic line with eighth notes and 'x' marks, ending with a double bar line.