

# STILL GOT THE BLUES

TRANSCRIPTION BY CHRIS McCAIG

GARY MOORE

for more transcriptions - [www.cmdrumstudios.com](http://www.cmdrumstudios.com)

DRUMMER: GRAHAM WALKER

GUITAR  
INTRO

HI-HAT

12/8

The first system of notation shows the guitar intro and the start of the hi-hat pattern. The guitar part begins with a 12/8 time signature and a key signature of one flat. The hi-hat part is a steady eighth-note pattern.

The second system continues the guitar and hi-hat parts. The guitar part features a melodic line with eighth notes and a quarter note. The hi-hat part continues with eighth notes.

The third system continues the guitar and hi-hat parts. The guitar part features a melodic line with eighth notes and a quarter note. The hi-hat part continues with eighth notes.

*cresc.*

The fourth system continues the guitar and hi-hat parts. A crescendo hairpin is placed over the hi-hat part, which becomes more active with sixteenth notes. The guitar part continues with eighth notes.

RIDE CYMBAL

The fifth system continues the guitar and hi-hat parts. The hi-hat part is replaced by a ride cymbal pattern, indicated by a circled 'O' above the notes. The guitar part continues with eighth notes.

RIDE CYMBAL

The sixth system continues the guitar and hi-hat parts. The hi-hat part is replaced by a ride cymbal pattern, indicated by a circled 'O' above the notes. The guitar part continues with eighth notes.

The seventh system continues the guitar and hi-hat parts. The hi-hat part is replaced by a ride cymbal pattern, indicated by a circled 'O' above the notes. The guitar part continues with eighth notes.

# STILL GOT THE BLUES PAGE 2

*cresc.*

HI-HAT

First staff of music, measures 1-4. It features a rhythmic pattern of eighth notes with 'x' marks above them, indicating a hi-hat pattern. The notes are on a single staff with a double bar line at the beginning.

Second staff of music, measures 5-8. It continues the hi-hat pattern. Measure 7 has a '7' below it, indicating a 7/8 time signature change. Measure 8 has a circled 'x' above the first note.

RIDE CYMBAL

Third staff of music, measures 1-4. It features a rhythmic pattern of eighth notes with 'x' marks above them, indicating a ride cymbal pattern. The notes are on a single staff with a double bar line at the beginning.

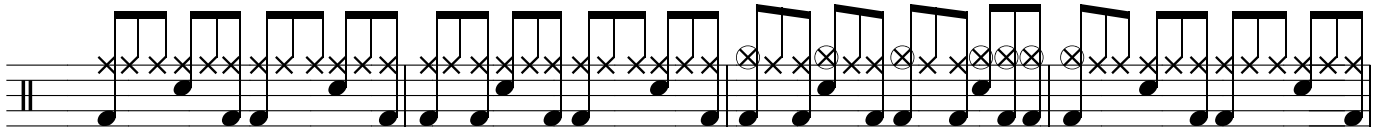
Fourth staff of music, measures 5-8. It continues the ride cymbal pattern. Measure 7 has a circled 'x' above the first note, and measure 8 has a circled 'x' above the first note.

Fifth staff of music, measures 9-12. It continues the ride cymbal pattern. Measure 10 has a circled 'x' above the first note, measure 11 has a circled 'x' above the first note, and measure 12 has a circled 'x' above the first note.

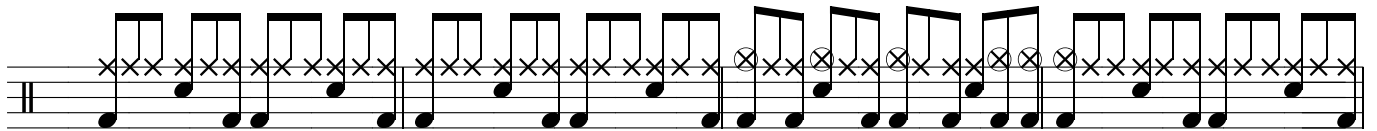
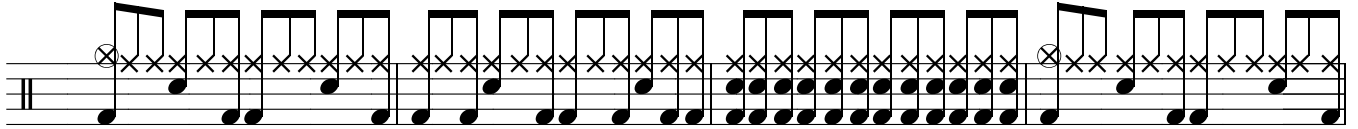
Sixth staff of music, measures 13-16. It continues the ride cymbal pattern. Measure 14 has a circled 'x' above the first note, measure 15 has a circled 'x' above the first note, and measure 16 has a circled 'x' above the first note.

Seventh staff of music, measures 17-20. It continues the ride cymbal pattern. Measure 18 has a circled 'x' above the first note, measure 19 has a circled 'x' above the first note, and measure 20 has a circled 'x' above the first note.

# STILL GOT THE BLUES PAGE 3



*cresc.*



hi-hat roll - half open

*rit.* (gradually slowing down)

