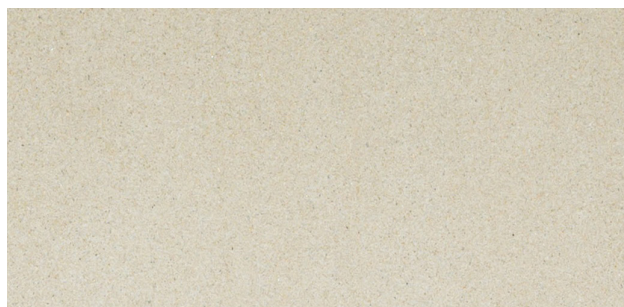
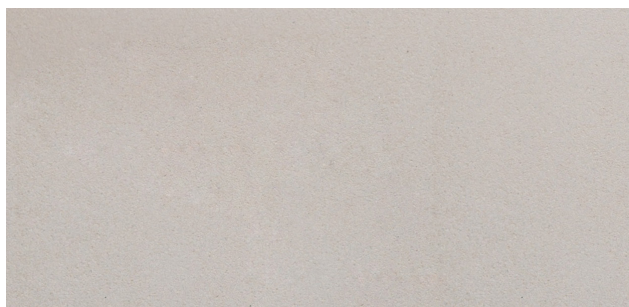


STONE SPECIFICATION

Mt White - Pure White



HOW TO SPECIFY

| | |
|---------------|--|
| GENERAL: | Sandstone shall be Mount White - Pure White Sandstone by Gosford Quarries |
| STONE TYPE: | Mount White Sandstone |
| COLOUR: | Pure White |
| STONE FINISH: | Diamond sawn, Gang sawn, Honed, Rockfaced, Sparrow pecked & Custom |
| SIZES: | As specified by architect |
| FIXING: | Adhesive Material to be compatible to substrate medium. Stone cladding above 2.3 metres in height to be mechanically fixed. Refer to ASSA Natural Stone Design manual for more information. |
| SEALING: | Sealer to be specified by designer or installer |

TYPICAL TECHNICAL SPECIFICATION

| | |
|--------------------------------------|----------------------------|
| BULK DENSITY (ASTM C97-83): | 2.27 tonnes/m ³ |
| ABSORPTION BY WEIGHT (ASTM C97-83): | 4.4% |
| MODULUS OF RUPTURE: | 8.9 MPa Dry, 2.5 MPa Wet |
| COMPRESSIVE STRENGTH (ASTM C170-87): | 57 MPa Dry, 22 MPa Wet |



**GOSFORD
QUARRIES**
EST 1922 | A SARKIS BROS COMPANY

*Sandstone is a natural product and therefore subject to variation in colour, tone, shade and texture.

ARTARMON SHOWROOM

50 Whiting Street
Artarmon NSW 2065
P 02 8585 8282

TERREY HILLS SHOWROOM

301 Mona Vale Road
Terrey Hills NSW 2084
P 02 9486 3422

SOMERSBY SHOWROOM

70 Quarry Rd
Somersby NSW 2250
P 02 4340 3000

GLENORIE SHOWROOM

2863 Old Northern Rd,
Glenorie 2157
P 02 9652 0107

CLAYTON SOUTH SHOWROOM

9 Prestige Drive
Clayton South VIC 3169
P 03 9558 2283

BEAUDESERT SHOWROOM

1812 Beaudesert-Boonah
Road, Beaudesert Qld 4285
P 07 5541 0143



www.gosfordquarries.com.au



sales@gosfordquarries.com.au