

Opportunities for the Week

SUNDAY, October 15

- 8:45AM Youth Bells
- 9:45AM Sunday School
- 11:00AM Worship
- 12:00PM Youth Choir
- 4:00PM Fall Family Day

TUESDAY, October 17

- 6:00PM Missions Committee Meeting

WEDNESDAY, October 18

- 4:00PM Staff Meeting
- 5:15PM Fellowship Meal
- 6:00PM Ecclesia Communities
- 6:00PM Youth, GA's, RA's, Mission Friends
- 6:00PM Cathedral Bells
- 7:00PM Sanctuary Choir

FRIDAY, October 20 - SUNDAY, October 22

- 4:00PM Fall Youth Retreat – Ridgecrest Conference Center

Records at-a-Glance

Sunday School Attendance 10/08	145
Worship Attendance 10/08	159
Weekly Budget Requirement	\$11,364.00
Budget Receipts 10/01	\$14,112.00
YTD Budget Receipts 09/30	\$402,136.84
YTD Expenses thru 09/30	\$413,362.84
Capital Campaign Receipts (thru 10/01)	\$247,385.00
Capital Campaign Commitments	\$278,595.00
Habitat for Humanity (thru 10/01)	\$25,886.00

MEMORIALS

General Fund

- Tom Morgan by Peggy Hill
- Vern Gohn by Stan & Kay Weathersbee

First Baptist Church Staff

Tel: 704-982-2111 Fax: 704-982-2119 Website: fbc-albemarle.org

Andy Jung	Senior Pastor	704-985-3103	andy@fbc-albemarle.org
Aza Hudson	Director of Music Programming	704-425-2416	aza@fbc-albemarle.org
Christy Brown	Interim Director of Children	704-699-6755	christy@fbc-albemarle.org
Alyssa Queen	Interim Director of Youth	757-293-8351	alyssa@fbc-albemarle.org
Pat Workman	Secretary		info@fbc-albemarle.org
Sandra Stone	Financial Secretary		sandra@fbc-albemarle.org
Judy Fraley	Food Service Director		judy@fbc-albemarle.org
Todd Kimrey	Facility Manager	704-791-0431	todd@fbc-albemarle.org

Deadline for submissions for the TIE is Tuesday at noon

Our Church Family

MISSIONARIES

- | | |
|-------------------|--------------|
| Rob & Amanda Rone | Myanmar |
| John Taylor | Far East |
| Molly Peele | Rhode Island |

PRAYER LIST

Sue Hunsucker, Linda Hall, Jane Pendergraft, Sylvia Scholl, Diane Huneycutt Powell, Kip Medlin, Mary Sullivan, Peggy Richardson, Christina Harris, Julie Crumpler, Nita Bayles, Joanna Morgan, Gary Faulk, Betty Hartley, Mary Garber, Barbara Bowers, Burnie Miller, Ginny Skidmore, Braden Poplin, Patti Furr, Jack Bane

CONTINUAL CARE

Mildred Archer, Mildred Cooper, Joan English, Mary Furr, Ann Gaskin, Frances Newton, Helen Mauldin, Jack Bane, Max Clayton, Aileen Taylor, Herman Faulkner, Barbara Hicks, Mary Sullivan, Carl Bowen, David & Sandy Young, David Sanges, Lu Phelps, Pete Johnson, Peggy Hill, Frank Crisco, Don Bennett, Carol Brummitt, Rachel Chandler, Jim Mauney, Agnes Blalock, John & Bonnie Herring, Raynell Cooke, Bear Knotts, Patsy Turbeville, Sid Linker, Patty Lowder

SYMPATHY

Christian love and sympathy to Amy Jung and family in the passing of her grandfather, Vern Gohn.

WELCOME NEW MEMBERS

Jim & Judy Fryar
42020 Canal Road
New London, NC 28127



U.S. Postage Paid
Albemarle, NC
PERMIT NO. 2
Non-Profit Org.

Here is your *TIE* to



Volume 64

Number 39

October 11, 2017



FALL FESTIVAL

Thursday, October 26

4-6PM

Please Donate Candy!

Get the Latest from First Baptist

www.fbc-albemarle.org

Follow us on Facebook: First Baptist Church Albemarle

Words From Pastor

Over the last two months, we have seen a great deal of devastation to our neighbors to the south. Hurricanes Harvey, Irma, and Maria devastated parts of Texas, Florida and most all of Puerto Rico. It has been an active hurricane season and many lives have been impacted.

Often, we see the devastation on the news and we feel helpless. There is nothing we can do to prevent the natural disasters from occurring. We pray for the victims and prayers certainly have the power to heal. Prayer changes lives and we should continually lift the people to our Lord who have been impacted by hurricanes. Prayer is the most important thing we can do.

Thankfully, there are many organizations and ministries that focus on disaster recovery. Groups like Red Cross, Samaritan's Purse and FEMA are there to assist when disaster strikes. Though all of these governmental and non-governmental agencies do great work, I am especially proud of the work of North Carolina Baptist on Mission. (baptistmission.org) NC Baptist disaster relief volunteers do an incredible job of meeting needs and caring for the people. They are efficient, organized and proficient in providing hot meals for thousands of people and tearing out flooded homes. More than anything, our volunteers show God's love to all people in times of crisis.

This year, our church leaders have decided that the proceeds from our 2nd Annual Missions Golf Tournament would be donated directly to NC Baptist on Missions. Last year in our inaugural golf tournament, we were able to raise \$12,000 that went to support the mission trip to Peru. My hope is that we can exceed last year's amount so that we can assist those who are rebuilding their lives in the impacted regions of our country.

Here is how you can help:

- First and foremost, register to play in the golf tournament. You can find the tournament information and registration form at church or on our website. (www.fbc-albemarle.org) We have two generous sponsors who have committed to donating a combined total of \$50 per player.
- Second, either sponsor a hole or help us find sponsors. Please contact Jane Myers or Lina Chandler for more information.
- Third, if you have items you would like to donate to the player's gift bag, please see Andy.

I am thankful for a church that cares for our neighbors in multitude of ways. Thanks be to God!

Deacon of the Week
Susan Taylor October 15 – October 21

General Announcements

Associate Pastor Search Update

The Associate Pastor of Family Ministries Search Committee is excited to announce that it has extended a call to a candidate to be our next Associate Pastor. The candidate has accepted the call upon the church's approval. The Call Weekend will be **Nov. 4-5** with opportunities for the church to meet the candidate. The candidate's bio and information will be shared with the church on Sunday, October 22.

FLOWER CALENDAR

Spaces are available on the Flower Calendar. Do you have a special occasion, birthday, anniversary or just a surprise to celebrate? Sign-up today! The flower calendar is on the bulletin board near the parlor or call the FBC office. Acknowledgements may be made in the Sunday bulletin.

REMINDER FROM YOUR FAITH COMMUNITY NURSES

October is Breast Cancer awareness month. Self-exams and mammograms are life savers.

Missions Corner

2nd Annual FBC Missions Golf Tournament

This year's golf tournament is scheduled for Friday, November 3 at 11:30am at Tillery Tradition Golf Club. All proceeds from this year's tournament will be donated to NC Baptist on Missions to support the hurricane relief in Texas and Florida.

Registration forms can be found on the church's website or outside of the church's office. If you or your company/business are willing to sponsor a hole or can help with door prizes, please contact Jane Myers or Lina Chandler.



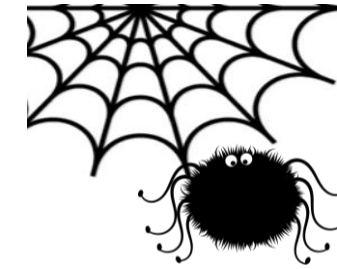
Operation Christmas Child Shoeboxes

Operation Christmas Child Shoebox Packing Party #3 is October 12 at 2PM in the Chris Newton Sunday School classroom. We still have boxes in the office to pick up and fill on your own, and we will gladly take any items you might want to donate for our group boxes.



SCCM needs for October
canned fruit
light syrup or no sugar added

Family Ministry News



FBC FALL FESTIVAL October 26, 2017 4-6 p.m.

FBC is partnering with the Albemarle Downtown Development Corporation's Fall Festival again this year for an awesome community outreach opportunity. We need Fall Festival volunteers to decorate 12 doors the week of the event. We still have openings for the evening of the event to greet trick-or-treaters, hand out candy, and supervise the bouncy house fun. Please contact Karmen Russell or sign up outside the office to let us how you can help! AND....Candy Collection continues! Please place your candy donations in the orange crates in the hallways.

FALL YOUTH RETREAT

Oct. 20 - 22

Who Am I?

Ridgecrest Conference Center

Cost: \$90

Youth Fall Retreat October 20-22

Cost: \$90

Our annual Youth Fall Retreat will be held at Ridgecrest on October 20-22. It will be a wonderful weekend of learning and fellowship. If you haven't signed up, please contact Alyssa ASAP!

FALL FAMILY DAY

October 15th 4 -7pm @ Get Lost Corn Maze

Children and youth and their families are invited to join us for some family fun, fellowship and food! Feel free to invite friends! General administration is \$7.50 per person or \$9 per person including 2 Jumpy Pillow jumps. Sign up and pay in the church office by Wed. October 11th so we can have a head count for pizza. Questions? Contact Christy Brown.

JOY Group

JOY Trip: November 9-11 to Myrtle Beach, SC

JOY Lunch: Tuesday, November 7 at Noon.