

CONFIGURATIONS

Choose from 3 pre-designed packages, or mix-and-match to create your own reconfigurable wall art.



PhotoTiles 3 Piece Package

The 3 Piece Package features three progressively larger square tiles: a 12x12 on an 18x18 on a 24x24.

PhotoTiles Trilogy Package

The Trilogy Package combines a 9x24 back panel with three overlaid 6x6 tiles in a row.





TILES Quad Package

The Quad Package features four 8x8 overlaid tiles on a 24x24 back panel.

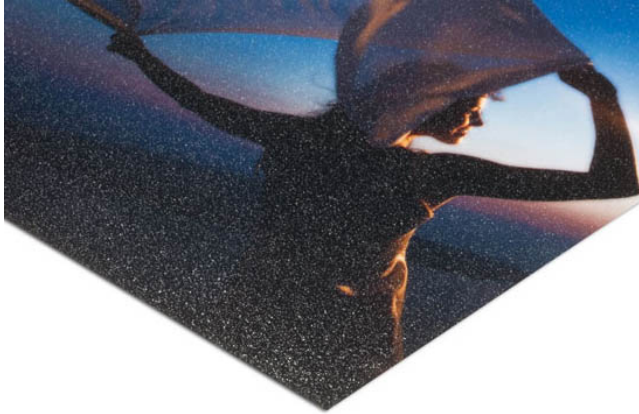
Additional Tiles can be Ordered Separately

Keyholes in the back of each tile's mounting block make it easy to swap tiles as times change and children grow.

PRINT SURFACES

At Dana Frames Photo + Design, we use only professional photo papers so that you always receive the longest lasting and highest quality photographic prints available.





Kodak ENDURA Lustre “E”

Our default surface paper, featuring a fine grain pebble texture.



Kodak ENDURA Glossy “F”

Professional photo paper with a glossy finish.



Kodak ENDURA Metallic

Features a glossy finish and metallic appearance that creates images with exceptional visual interest and depth.

PROTECTIVE COATINGS

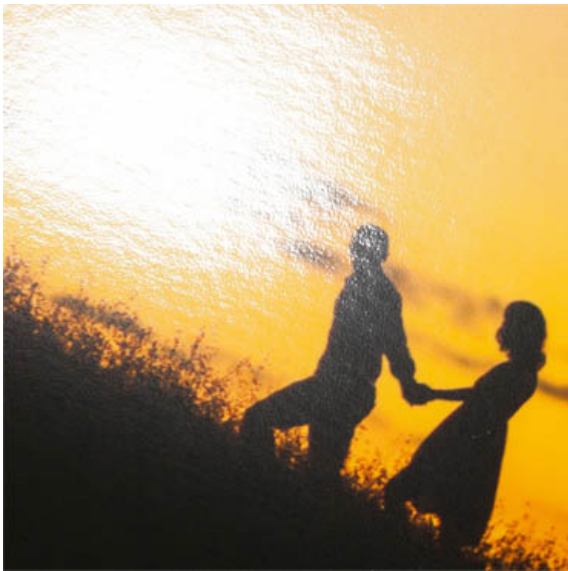
Protect the surface of your print, while enhancing the appearance.



Glossy Coating



Lustre Coating



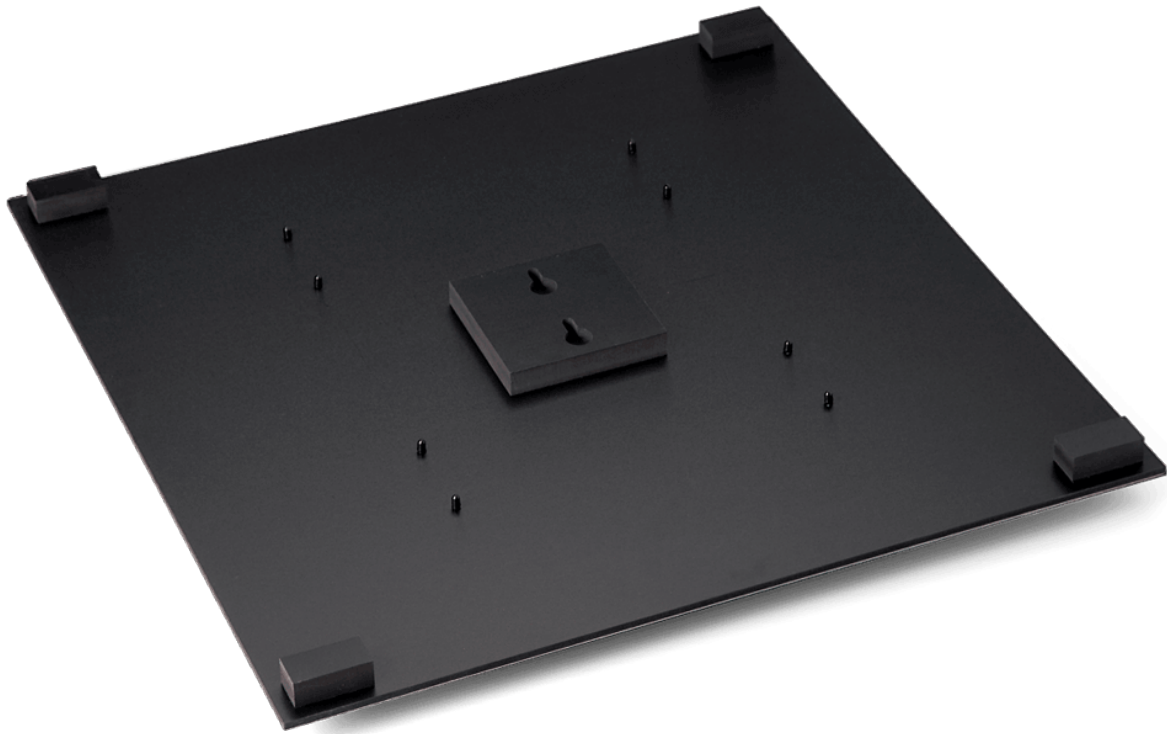
Glossy Plastic Laminate



Satin Plastic Laminate

MOUNTING

PhotoTiles are delivered display-ready with mounting blocks attached.



PRICING

PhotoTiles™ Packages	Size/Description	Price with Lustre Prints
Trilogy Package	3-6x6 Tiles on a 9x24 Back Panel	\$340
Quad Package	4-8x8 Tiles on a 24x24 Back Panel	\$680
3 Piece Package	3 progressively larger Square Tiles: 1-12x12 on 1-18x18 on 1-24x24	\$750
Individual PhotoTiles™		Price with Lustre Prints
6x6" Image Tile		\$95
8x8" Image Tile		\$115
12x12" Image Tile		\$30.95
18x18" Image Tile		\$148
Trilogy Back Panel		\$210
Quad Back Panel		\$425
3 Piece Back Panel		\$425