

Baby I-Cord by Woolly Wormhead



Yarn

99yd/90m/50g
Aran weight, multi-ply yarn.

Needles & Notions

Set 4.5mm/UK7/US7 DPNs/Circular or size needed to obtain gauge
Stitch marker as necessary
Tapestry needle

Sample details

Shown in Ashford Tekapo
[218yd/199m per 100g; 100% Wool]

Shown in size 16in/40.75cm on model with
16in/40.75cm circumference head

Gauge

18 sts x 24 rows to 4in/10cm on 4.5mm
needles over St.St.

Sizes

To fit sizes: 12 [14, 16, 18] in/30.5 [35.5, 40.75,
45.75] cm
Finished size: 11.5 [13.25, 15, 16.75] in/29.25
[33.75, 38, 42.5] cm

Skills required

Knit & purl sts, knitting in the round, increases
& decreases, I-cords

Abbreviations

K:	knit
P:	purl
RS:	right side
WS:	wrong side
Rnd/rnd:	round
rpt:	repeat
st(s):	stitch(es)
M1:	pick up the horizontal loop between sts, place it onto the left needle then knit into the back of it
k2tog:	knit next 2 sts together
Kfb:	knit into the front and back of the next st

Pattern Support

I'm afraid I'm unable to offer pattern support via email for my free patterns. Should you have any questions regarding this pattern please visit the Woolly Wormhead group on Ravelry:
<http://www.ravelry.com/groups/woolly-wormheads-hats>

Note

Not sure which size to make? Grab a tape measure! Babies' heads vary greatly – a typical newborn size is roughly 14in, typical year is 18in but these are only averages.

Single I-Cord version

Cast on 3sts
 Knit I-cord for 3in/7.5 cm or desired length.
 Next rnd: *kfb; rpt from * to end [6sts]

Multiple I-Cord versions

Knit each I-cord separately. More than 4 I-cords gets a bit tricky and messy; ideally 2 or 3 is neatest. You need to aim towards 6 sts to start the crown increases.

You need to aim towards 6 sts to start the crown increases. As you have completed your last I-cord, don't break the yarn; leave it on the needle.

Add the other I-cords to the left-hand end of the DPN, with all cut ends laying in the same direction as the working I-cord, i.e. to the left. You

will now work across them, working them together as follows:

2 I-cords:

You will have 6sts, which is the desired amount to start the crown increases.

3 I-cords:

There will be 9sts.
 Next row: *K1, k2tog; rpt from * to end. [6sts]

4 I-cords:

There will be 12sts.
 Next row: *k2tog; rpt from * to end. [6sts]

Plain Beanie

For a plain Hat without I-cord, cast on 6sts.

Crown (all versions)

Rnd 1: *K1, M1; rpt from * to end [12 sts]

Join in the round, being careful not to twist sts. Place stitch marker to indicate start of round.

(if you find on this row that picking up the loop for M1 is difficult, then increase the extra stitch by knitting into both the front and the back of the first stitch of the repeat. Picking up the loop will be easier in later rounds)

Rnd 3: *K1, M1, K1; rpt from * to end [18 sts]
 Rnd 4: *K1, M1, K2; rpt from * to end [24 sts]
 Rnd 5: *K1, M1, K3; rpt from * to end [30 sts]
 Rnd 6: *K1, M1, K4; rpt from * to end [36 sts]
 Rnd 7: *K1, M1, K5; rpt from * to end [42 sts]
 Rnd 8: *K1, M1, K6; rpt from * to end [48 sts]
 Rnd 9: *K1, M1, K7; rpt from * to end [54 sts]

Carry on increasing in this fashion, increasing 6 sts per round until:

Carry on increasing in this fashion, i.e. one extra stitch in each repeat, increasing 6sts per round until you have 54 [60, 72, 84] sts

Body

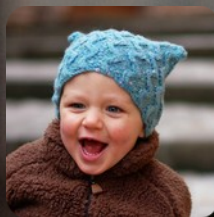
Work plain stocking stitch (knit every round) until Hat measures 4 [4.75, 5.5, 6.25] in/10.25 [12, 14, 16] cm from crown or until desired length.

Cast off loosely and allow edge to roll.

Finishing

Weave in all ends. A gentle wash and blocking is required to help the increase lines settle in and lay flat.

Woolly Wormhead



Woolly Wormhead is a Hat Architect.

With an instinctive flair for unusual construction and a passion for innovation, Woolly Wormhead is a designer whose patterns are trusted and celebrated by knitters all over the world. As a designer, Woolly is driven by a need to create and develop her understanding of 3D form. Communicating her ideas and sharing her specialised knowledge with her audiences is key to Woolly's success as a designer. Woolly's high quality pattern writing ensures perfect results, teaches new skills and encourages us all to become Hat architects.

Visit www.woollywormhead.com for further details.