

Sideways Bobble Hat by Woolly Wormhead



Yarn

138yd/126m/100g
Chunky weight, single or multi-ply yarn.

Needles & Notions

Pair 5mm/UK6/US8 straight needles or size needed to obtain gauge
Stitch markers as necessary
Tapestry needle
Approx 3yd/3m waste yarn (provisional cast-on)
5mm crochet hook (provisional cast-on)
Scraps of co-ordinating yarn for pom-pom

Sample details

Shown in Manos del Uruguay Clasica
[138yd/126m per 100g; 100% Wool]

Shown in size 22in/56cm on model with
21.75in/55.25cm circumference head

Gauge

16 sts x 20 rows to 4in/10cm on 5mm needles
over St.St.
16 sts x 30 rows to 4in/10cm on 5mm needles
over Garter.St.

Sizes

To fit sizes: 18 [20, 22] in/45.75 [50.75, 56] cm
Finished size: 16 [17.75, 19.25] in/40.75 [45, 49] cm

Skills required

Knit & purl sts, short rows, provisional cast-on,
kitchener stitch, pom-poms

Abbreviations

K:	knit
P:	purl
RS:	right side
WS:	wrong side
rpt:	repeat
st(s):	stitch(es)
w&t:	slip the next stitch purlwise onto right needle, bring yarn forward, slip stitch back to left needle, turn work and continue to next row.

Pattern Support

I'm afraid I'm unable to offer pattern support via email for my free patterns. Should you have any questions regarding this pattern please visit the Woolly Wormhead group on Ravelry:
<http://www.ravelry.com/groups/woolly-wormheads-hats>

Special techniques

Tutorials for Provisional cast-on & Kitchener grafting tutorials can be found here:
<http://www.woollywormhead.com/knitting-crochet/>

How to

If you intend sewing the seam, cast on with main yarn. If you intend grafting the seam, cast on with scrap yarn and change to main yarn for Row 1.

Cast on 33 [34, 35] sts

Panel

Row 1: Knit all sts
 Row 2: K32 [33, 34], w&t
 Row 3: Knit to end
 Row 4: K31 [32, 33], w&t
 Row 5: Knit to end
 Row 6: K30 [31, 32], w&t
 Row 7: Knit to end
 Row 8: K29 [30, 31], w&t
 Row 9: Knit to end
 Row 10: K28 [29, 30], w&t
 Row 11: Knit to end

Continue in this manner until there are 9 [10, 11] slipped/wrapped sts on right hand needle, ending at the brim edge after a plain knit row.

Next row: Knit across all sts picking up the wraps as you go [33, 34, 35] sts

You have just knitted one panel. Start again from Row 1 and repeat for a further 5 times, 6 panels in total. If you intend to graft the seam, don't knit the final row on the final panel, as this will be replaced by the graft.

Finishing

Either sew up the seam neatly with matching yarn, or use one of the invisible grafting methods such as kitchener stitch or 3-needle bind off. Remove the waste cast on yarn and replace live stitches back onto working needle.

Pompom

Of course this is optional, but don't they finish this Hat? A pompom maker with a 2" circumference is recommended. Using various coordinating yarns in different gauges, the pompom will be really tight before finishing.

Leave a long enough tail after securing the centre to be able to sew to the crown. If you are going to leave the crown plain, use some left over yarn from the main Hat to thread through the tiny circle at the crown – gently tighten and secure to finish.

Weave in all ends & sew on pompom securely. Blocking isn't necessary.

Also available from Woolly Wormhead

Karenin



A warm and protective knit, this aran weight aviator style Hat with integrated earflaps offers comfort on cold days and long nights.

(WW198KKarenin)

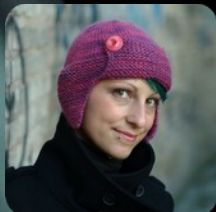
Taboosh



This pillbox style Hat stands tall with its tapering shape and firm fabric.

(WW202KTaboosh)

Woolly Wormhead



Woolly Wormhead is a Hat Architect.

With an instinctive flair for unusual construction and a passion for innovation, Woolly Wormhead is a designer whose patterns are trusted and celebrated by knitters all over the world. As a designer, Woolly is driven by a need to create and develop her understanding of 3D form. Communicating her ideas and sharing her specialised knowledge with her audiences is key to Woolly's success as a designer. Woolly's high quality pattern writing ensures perfect results, teaches new skills and encourages us all to become Hat architects.

Visit www.woollywormhead.com for further details.