

# Baby Tri-Peak by Woolly Wormhead



## *Yarn*

99yd/90m/50g  
Aran weight, multi-ply yarn.

## *Needles & Notions*

Set 4.5mm/UK7/US7 DPNs/Circular or size needed to obtain gauge  
4.5mm crochet hook  
Stitch marker as necessary  
Tapestry needle

## *Sample details*

Shown in Ashford Tekapo  
[218yd/199m per 100g; 100% Wool]

Shown in size 16in/40.75cm on model with  
16in/40.75cm circumference head

## *Gauge*

18 sts x 24 rows to 4in/10cm on 4.5mm  
needles over St.St.

## *Sizes*

To fit sizes: 12 [14, 16] in/30.5 [35.5, 40.75] cm  
Finished size: 11.5 [13.25, 15] in/29.25 [33.75, 38] cm

## *Skills required*

Knit & purl sts, knitting in the round, 3-needle  
bind-off OR Kitchener stitch

*Abbreviations*

K:	knit
P:	purl
RS:	right side
WS:	wrong side
Rnd/rnd:	round
rpt:	repeat
st(s):	stitch(es)

*Pattern Support*

I'm afraid I'm unable to offer pattern support via email for my free patterns. Should you have any questions regarding this pattern please visit the Woolly Wormhead group on Ravelry:  
<http://www.ravelry.com/groups/woolly-wormheads-hats>

*Special Techniques*

Kitchener stitch or crochet bind are perfect for finishing the top of the Hat. Tutorials can be downloaded as PDF files from here:  
<http://www.woollywormhead.com/knitting-crochet/>

*Alteration Notes*

To alter the size for a tri-peak, increase or decrease the number of cast-on stitches by 6. Should you wish for a quatra-peak, cast on 56 [72, 80] sts and start the first peak by slipping the first 7 [9, 10] etc.

*Note*

Not sure which size to make? Grab a tape measure! Babies' heads vary greatly – a typical newborn size is roughly 14in, typical year is 18in but these are only averages.

*How to*

Cast on 54 [66, 78] sts  
 Join in the round, being careful not to twist sts.  
 Place stitch marker to indicate start of round.

*Body*

Knit every round to create stocking stitch.

Continue until length of tube is 6 [6.5, 7] in/15 [16.5, 17.75] cm or desired length. At this length, you are ready to start the top shaping.

*Crown*

Slip the first 9 [11, 13] sts from the next needle directly after marker (start of round) onto a 4.5mm DPN (or spare needle)

You are now at the tip of the first point. Count off & slip the next 9 [11, 13] sts onto another spare 4.5mm DPN. Leave rest of sts on other needles or stitch holders, as you'll need them later for the other peaks.

These two needles are now your working needles. With this set of working needles, both should have 9 [11, 13] sts on them. Hold them so that they are parallel and wrong sides together. You are ready to start the crochet 2-needle cast off.

**Peak 1:**

With your crochet hook, slip the 1st stitch off the first working needle onto the hook. Do the same with the 1st stitch of the 2nd working needle. Pass the 1st stitch on the hook over the 2nd (with me so far?) Slip the 2nd stitch of the 1st needle onto the hook, and again pass over the previous stitch. Keep going like this until you have one stitch remaining - you are crocheting alternate stitches from the working needles and passing over the previous stitch on the crochet hook.

Note: you do not need the yarn for this method, so leave it attached and trailing at the start of the round.

The remaining stitch should be held on a marker until you have finished all 3 peaks. You should have a visible seam, which looks a little plaited, kinda. This method helps keep the peaks 'crisp'.

**Peak 2:**

Slip next 9 [11,13] sts onto a working DPN. And again the following 9 [11, 13] sts onto 2nd working DPN. Repeat the cast-off process, saving the remaining stitch with the first, on a stitch holder.

**Peak 3:**

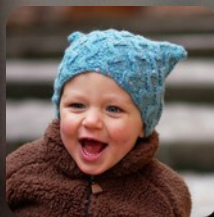
With any luck, you should have 18 [22, 26] sts remaining. Divide these evenly across 2 needles and repeat this crochet 2-needle cast off again.

*Finishing*

You will have 3 sts remaining; the finishing sts from each peak. Break yarn and thread through remaining sts. Pass yarn end to inside, and weave in all ends. A gentle blocking is recommended.



# Woolly Wormhead



Woolly Wormhead is a Hat Architect.

With an instinctive flair for unusual construction and a passion for innovation, Woolly Wormhead is a designer whose patterns are trusted and celebrated by knitters all over the world. As a designer, Woolly is driven by a need to create and develop her understanding of 3D form. Communicating her ideas and sharing her specialised knowledge with her audiences is key to Woolly's success as a designer. Woolly's high quality pattern writing ensures perfect results, teaches new skills and encourages us all to become Hat architects.

Visit [www.woollywormhead.com](http://www.woollywormhead.com) for further details.