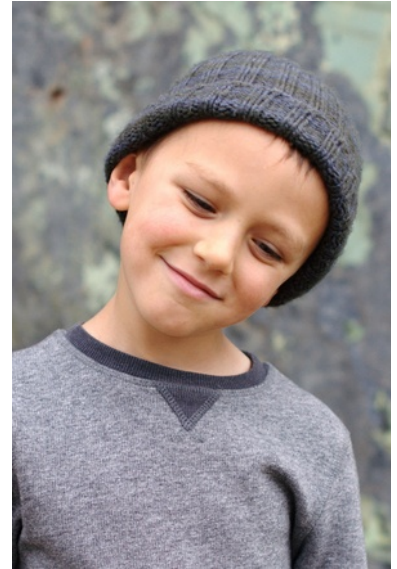


Classic Beanie by Woolly Wormhead



Yarn

216yd/198m/100g
Aran weight, single ply yarn.

Needles & Notions

Set 4.5mm/UK7/US7 DPNs/Circular or size needed to obtain gauge
Stitch marker as necessary
Tapestry needle

Sample details

Shown in Malabrigo Merino Worsted
[216yd/198m per 100g; 100% Merino]

Shown in size 21in/53.25cm on model with
20in/50.75cm circumference head

Gauge

18 sts x 24 rows to 4in/10cm on 4.5mm
needles over St.St.

Sizes

To fit sizes: 18 [21, 24] in/45.75 [53.25, 61] cm
Finished sizes: 14.25 [17.75, 21.25] in/36.25
[45, 54] cm

Skills required

Knit & purl sts, knitting in the round, increases
& decreases

Abbreviations

K:	knit
P:	purl
RS:	right side
WS:	wrong side
Rnd/rnd:	round
rpt:	repeat
st(s):	stitch(es)
k2tog:	knit next 2 sts together
ssk:	slip next 2 sts knitwise, then knit these 2 sts together through the backs of the loops

Pattern Support

I'm afraid I'm unable to offer pattern support via email for my free patterns. Should you have any questions regarding this pattern please visit the Woolly Wormhead group on Ravelry:
<http://www.ravelry.com/groups/woolly-wormheads-hats>

Note

Using preferred cast-on method, cast on 64 [80, 96] sts. Join in the round, being careful not to twist sts. Place stitch marker to indicate start of round.

Body

Rnd 1: K1, *[P2, K2]; rpt from * to last 3 sts, P2, K1.

Starting the rib this way sets the pattern up for the crown shaping. Repeat this round, creating 2x2 rib, until the Body measures 7 [7.75, 8.5] in/17.75 [19.75, 21.5] cm. For a regular beanie without a folded brim work until the Body measures 4 [4.75, 5.5] in/10 [12, 14] cm.

Crown - 18in & 24in sizes

18in size jump to Rnd 9, 24in size start at Rnd 1.

Rnd 1: *ssk, P1, [K2, P2] 4 times, K2, P1, k2tog; rpt from * to end [88 sts]
 Rnd 2: *K1, P1, [K2, P2] 4 times, K2, P1, K1; rpt from * to end
 Rnd 3: *ssk, [K2, P2] 4 times, K2, k2tog; rpt from * to end [80 sts]
 Rnd 4: *K1, [K2, P2] 4 times, K3; rpt from * to end
 Rnd 5: *ssk, K1, P2, [K2, P2] 3 times, K1, k2tog; rpt from * to end [72 sts]
 Rnd 6: *[K2, P2] 4 times, K2; rpt from * to end
 Rnd 7: * ssk, P2, [K2, P2] 3 times, k2tog; rpt from * to end [64 sts]
 Rnd 8: *K1, P2, [K2, P2] 3 times, K1; rpt from * to

end

Rnd 9: *ssk, P1, [K2, P2] 2 times, K2, P1, k2tog; rpt from * to end [56 sts]
 Rnd 10: *K1, P1, [K2, P2] 2 times, K2, P1, K1; rpt from * to end
 Rnd 11: *ssk, [K2, P2] 2 times, K2, k2tog; rpt from * to end [48 sts]
 Rnd 12: *K1, [K2, P2] 2 times, K3; rpt from * to end
 Rnd 13: *ssk, K1, P2, K2, P2, K1, k2tog; rpt from * to end [40 sts]
 Rnd 14: *[K2, P2] 2 times, K2; rpt from * to end
 Rnd 15: *ssk, P2, K2, P2, k2tog; rpt from * to end [32 sts]
 Rnd 16: *K1, P2, K2, P2, K1; rpt from * to end
 Rnd 17: *ssk, P1, K2, P1, k2tog; rpt from * to end [24 sts]
 Rnd 18: *K1, P1, K2, P1, K1; rpt from * to end
 Rnd 19: *ssk, K2, k2tog; rpt from * to end [16 sts]
 Rnd 20: Knit all sts
 Rnd 21: *ssk, k2tog; rpt from * to end [8 sts]

Break yarn and draw through remaining 8sts, tighten to close.

Crown - 21in size

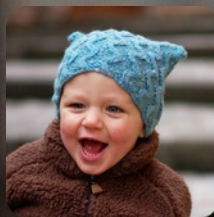
Rnd 1: *ssk, P1, [K2, P2] 3 times, K2, P1, k2tog; rpt from * to end [72 sts]
 Rnd 2: *K1, P1, [K2, P2] 3 times, K2, P1, K1; rpt from * to end
 Rnd 3: *ssk, [K2, P2] 3 times, K2, k2tog; rpt from * to end [64 sts]
 Rnd 4: *K1, [K2, P2] 3 times, K3; rpt from * to end
 Rnd 5: *ssk, K1, P2, [K2, P2] 2 times, K1, k2tog; rpt from * to end [56 sts]
 Rnd 6: *[K2, P2] 3 times, K2; rpt from * to end
 Rnd 7: * ssk, P2, [K2, P2] 2 times, k2tog; rpt from * to end [48 sts]
 Rnd 8: *K1, P2, [K2, P2] 2 times, K1; rpt from * to end
 Rnd 9: *ssk, P1, K2, P2, K2, P1, k2tog; rpt from * to end [40 sts]
 Rnd 10: *K1, P1, K2, P2, K2, P1, K1; rpt from * to end
 Rnd 11: *ssk, K2, P2, K2, k2tog; rpt from * to end [32 sts]
 Rnd 12: *K3, P2, K3; rpt from * to end
 Rnd 13: *ssk, K1, P2, K1, k2tog; rpt from * to end [24 sts]
 Rnd 14: *K2, P2, K2; rpt from * to end
 Rnd 15: *ssk, P2, k2tog; rpt from * to end [16 sts]
 Rnd 16: *K1, P2, K1; rpt from * to end
 Rnd 17: *ssk, k2tog; rpt from * to end [8 sts]

Break yarn and draw through remaining 8sts, tighten to close.

Finishing

Weave in all ends. A gentle wash and blocking is required to help the increase lines settle in and lay flat.

Woolly Wormhead



Woolly Wormhead is a Hat Architect.

With an instinctive flair for unusual construction and a passion for innovation, Woolly Wormhead is a designer whose patterns are trusted and celebrated by knitters all over the world. As a designer, Woolly is driven by a need to create and develop her understanding of 3D form. Communicating her ideas and sharing her specialised knowledge with her audiences is key to Woolly's success as a designer. Woolly's high quality pattern writing ensures perfect results, teaches new skills and encourages us all to become Hat architects.

Visit www.woollywormhead.com for further details.