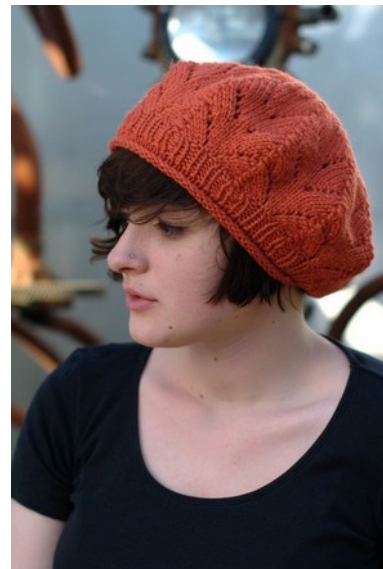


# Meret by Woolly Wormhead



## *Yarn*

223yd/204m/100g  
Aran weight, multi-ply yarn.

## *Needles & Notions*

Set 4.5mm/UK7/US7 DPNs/Circular or size needed to obtain gauge  
10 [11, 12] Stitch markers  
Tapestry needle

## *Sample details*

Shown in Patons Classic Wool  
[223yd/204m per 100g; 100% Wool]

Shown in size 20in/51cm on model with  
21.5in/54.5cm circumference head

## *Gauge*

18 sts x 24 rows to 4in/10cm on 4.5mm  
needles over St.St.

## *Sizes*

To fit sizes: 18 [20, 22] in/46 [51, 56] cm  
Finished size: 16 [17.75, 19.5] in/40.75 [45,  
49.5] cm

## *Skills required*

Knit & purl sts, knitting in the round, increases  
& decreases, basic lace (eyelets)

## Abbreviations

K:		knit
P:	—	purl
RS:		right side
WS:		wrong side
Rnd/rnd:		round
rpt:		repeat
st(s):		stitch(es)
ktbl:	‡	knit stitch through back of loop
M1:		pick up the horizontal loop between sts, place it onto the left needle then knit into the back of it
yo:	○	yarn over needle
k2tog:	∧	knit next 2 sts together
ssk:	∧	slip next 2 sts knitwise, then knit these 2 sts together
sk2po:	∧	slip next stitch, then knit following two stitches together, then pass slipped stitch over

## Pattern Support

I'm afraid I'm unable to offer pattern support via email for my free patterns. Should you have any questions regarding this pattern please visit the Woolly Wormhead group on Ravelry: <http://www.ravelry.com/groups/woolly-wormheads-hats>

## Special Techniques

Cable cast-on – a tutorial can be downloaded as a PDF from here: <http://www.woollywormhead.com/knitting-crochet/>

## Alteration Notes

This pattern can be made more slouchy by knitting one or two extra lace repeats – one extra repeat will make a regular slouch beret, two extra repeats will make it really slouchy! You can also mix and match the different sizing options, by starting the lace chart in different places than those given.

Over time, this pattern has been through many incarnations & been worked with so many variations! The current sample in the photos – the orange Meret – was added recently (autumn 2011)

and was knitted with a combined rolled+ribbed brim, and has 2 full repeats of the stitch pattern in the body. It is the 20in/51cm size.

## How to

Using Cable cast-on method cast on 72 [80, 88] sts. Join in the round, being careful not to twist sts. Place stitch marker to indicate start of round.

## Brim

Work 1x1 rib for the brim until it measures 2 inches/5cm (or desired length) with the ribbing relaxed. OR for a rolled edge stocking stitch brim knit every round for 2 inches/5cm (or desired length)

Some knitters have worked an inch of the rolled brim then an inch of ribbing so that they had a more snug fit with the decorative finish of the rolled brim – the Hat shown here has a combination of 1 x 1 rib and stocking stitch.

Then work increase round once as follows:

Inc rnd: \*[K1, M1] twice, [K2, M1] 3 times, place stitch marker; rpt from \* to end [117, 130, 143 sts] (there will be 13 sts between each stitch marker)

It's a good idea to change to a circular needle for the main body, then change back to DPN's during the crown shaping when stitches are fewer.

## Body

**Small size:** work rnds 7-10 once, rnds 1-10 once, then rnds 1 & 2 once [16 rows]

**Medium size:** work rnds 4-10 once, rnds 1-10 once, then rnds 1 & 2 once [19 rows]

**Large size:** repeat rnds 1-10 2 times, then rnds 1 & 2 once [22 rows]

Rnd 1: \*K1, yo, K4, sk2po, K4, yo, K1; rpt from \* to end

Rnd 2, 4, 6, 8 & 10: knit all sts

Rnd 3: \*K2, yo, K3, sk2po, K3, yo, K2; rpt from \* to end

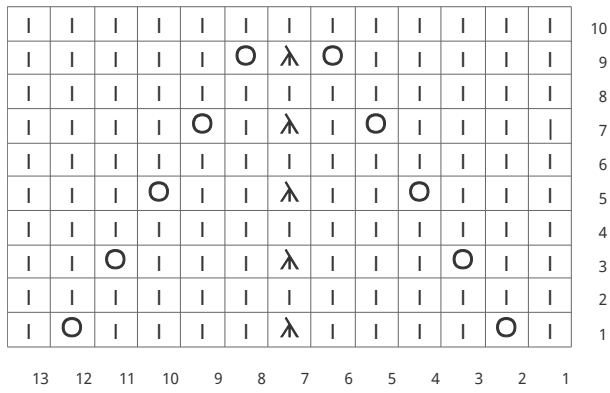
Rnd 5: \*K3, yo, K2, sk2po, K2, yo, K3; rpt from \* to end

Rnd 7: \*K4, yo, K1, sk2po, K1, yo, K4; rpt from \* to end

Rnd 9: \*K5, yo, sk2po, yo, K5; rpt from \* to end

## Slouchiness

For extra slouch, work one extra repeat of rnds 1-10. For even more slouch, work two extra repeats of rnds 1-10. The one shown is extra slouchy.



Break yarn and thread through remaining 5 [5, 6] sts and tighten to close.

*Finishing*

Weave in all ends. This Hat will require blocking to appreciate the fullness of the shape. It is best to block this Hat flat, as a circle with the crown at the centre. Encourage the eyelets to open out during the process but avoid stretching the brim of the Hat.

**Note:**

It's very important to end the body section after a 2<sup>nd</sup> round – this leaves the pattern in the correct place for the crown shaping. If you choose to work additional repeats for slouchiness, work them in the middle part of the instructions given for each size, prior to working rounds 1&2 at the end of the body section.

*Crown*

- Rnd 1: \*ssk, yo, K3, sk2po, K3, yo, K2tog; rpt from \* to end [99, 110, 121 sts]
- Rnd 2: \*ktbl, K10; rpt from \* to end
- Rnd 3: \*ssk, yo, K2, sk2po, K2, yo, K2tog; rpt from \* to end [81, 90, 99 sts]
- Rnd 4: \*ktbl, K8; rpt from \* to end
- Rnd 5: \*ssk, yo, K1, sk2po, K1, yo, K2tog; rpt from \* to end [63, 70, 77 sts]
- Rnd 6: \*ktbl, K6; rpt from \* to end
- Rnd 7: \*ssk, yo, sk2po, yo, K2tog; rpt from \* to end [45, 50, 55 sts]
- Rnd 8: \*ktbl, K4; rpt from \* to end
- Rnd 9: \*ssk, yo, K1, yo, K2tog; rpt from \* to end
- Rnd 10: \*ssk, K1, K2tog; rpt from \* to end [27, 30, 33 sts]
- Rnd 11: \*ktbl, K2; rpt from \* to end
- Rnd 12: \*sk2po; rpt from \* to end [9, 10, 11 sts]
- Rnd 13: K 1[0, 1], \*K2tog; rpt from \* to end [5, 5, 6 sts]

*Also available from Woolly Wormhead*



A warm and protective knit, this aran weight aviator style Hat with integrated earflaps offers comfort on cold days and long nights.

(WW198KKarenin)

*Karenin*



A Hat with a classic brim, this cap offers style and interest both visually and in its creation.

(WW197KCamdenCap)

*Camden Cap*



This pillbox style Hat stands tall with its tapering shape and firm fabric.

(WW202KTaboosh)

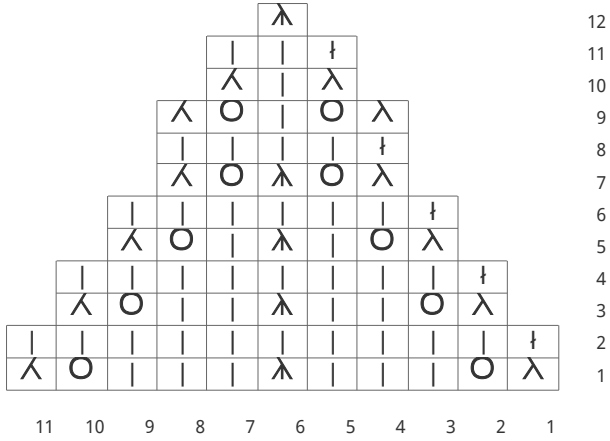
*Taboosh*



Making use of twisted stitches that slip around the entire hat, this beret is given great drape thanks to the silk content of the yarn.

(WW196KAnnular)

*Annular*

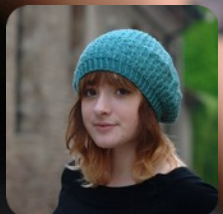
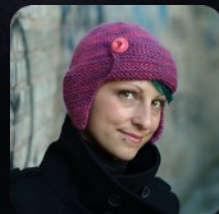


# Woolly Wormhead

Woolly Wormhead is a Hat Architect.

With an instinctive flair for unusual construction and a passion for innovation, Woolly Wormhead is a designer whose patterns are trusted and celebrated by knitters all over the world. As a designer, Woolly is driven by a need to create and develop her understanding of 3D form. Communicating her ideas and sharing her specialised knowledge with her audiences is key to Woolly's success as a designer. Woolly's high quality pattern writing ensures perfect results, teaches new skills and encourages us all to become Hat architects.

Visit [www.woollywormhead.com](http://www.woollywormhead.com) for further details.





## *Thanks to my Patreon supporters for bringing you this freebie!*

I know that not everyone can afford to pay for knitting patterns, and that's a problem. Creating quality patterns and tutorials takes a lot of work, and a lot of resources. Apart from the hours I put in, there are editors, graphic designers and more to be paid, not to mention web hosting and other costs.

So it means a lot to me to be able to give you free content. It's all thanks to the generous support of Patreon users who have pledged me a small amount each and every month. That helps to cover my costs and enables me to spend some of my precious time on creating free stuff like this, for you. Thank you, patrons! ([click here to join](#))



By the way, I've also put a lot of work into ensuring you get all the support you need to make your Hat a success.

There's a full tutorial library on my website ([click here](#)), and dedicated help threads for each of my patterns in my Ravelry group ([click here](#)). The moderators are great at providing support and encouragement, and you'll find a warm welcome from the whole group.