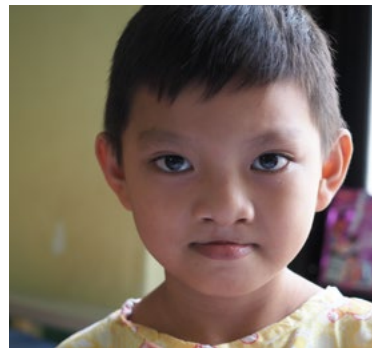




mending  
faces

2022 - 2023 ANNUAL REPORT





**MISSION:** Restoring hope and providing a brighter future to those whose lives are burdened by cleft lip, cleft palate and other deformities.

**WE DO THIS BY:** Working with local partner organizations to offer children born with cleft lip and cleft palate much-needed surgical and dental care during medical missions.

**OUR CARE IS:** Provided at no cost to the families; Includes surgical and dental care; Allows children to lead productive lives in their community and culture.

**WHO PROVIDES THIS CARE:** Volunteers donate their time and expertise and fund their travel and lodgings. We have partners from the United States, Norway, Philippines, Belgium, Canada, Hong Kong, Dominican Republic, El Salvador, and the United Kingdom.

*We are only successful because of our incredible volunteers, including surgeons, anesthesiologists, surgical techs, photographers, nurses, instrument cleaners, translators, and admin both abroad and in-country.*

**Since last June we have successfully conducted three Medical Missions, bringing many smiles to children including:**



**OCTOBER 2022:  
SAN SALVADOR, EL SALVADOR**

28 patients: six cleft lips, 11 cleft palates, 11 fistulas, two rhinoplasties, 2 frenectomies, and 4 dental extractions.



**JANUARY 2023:  
KALIBO, PHILIPPINES**

75 patients: 29 cleft lips, 38 cleft palates, 2 rhinoplasties, 1 frenectomy, and 2 keloid excisions.



**MAY 2023: SANTO DOMINGO,  
DOMINICAN REPUBLIC**

43 patients: 22 cleft lips, 23 cleft palates, 2 fistulas, 3 vomer flaps, 1 rhinoplasty.

*A special thanks to our on-the-ground partners: El Salvador Seventh Day Adventist Church, Central Military Hospital, Gov. Jose Enrique M. Miraflores, Dr. Rafael S. Tumbokon Memorial Hospital, Clinica Cruz Jiminian, FNE International, and FUNAPU.*

## UPCOMING MEDICAL MISSIONS



Philippines



El Salvador



Dominican Republic



Ecuador

*“These trips always come with all of the emotions. Excitement. Dread (long flights, jet lag, empty bank account.) Extreme gratitude. Exhaustion. Joy. Happiness. Sadness (missing my kids and home. Missing a full-sized napkin!) Anxiety. Physical pain (swollen body, bad posture from working long hours in an awkward position.) Pride. Fear (things not going as planned.) We all make these trips look amazing (they are!) But they’re not easy. They are actually really hard. They are most definitely not for everyone. At the end of the day; for me, what it comes down to is LOVE. I keep doing this and keep coming back because of LOVE.”*

— Andrea Mogensen, Medical Mission volunteer.



## OUR TEAM

### EXECUTIVE OFFICERS

Dr. Mimi Wong, MD - *Chairman*  
 Dr. Jeff Swail, MD - *Vice Chairman*  
 Monnie Biety - *Treasurer/Secretary*

### BOARD OF DIRECTORS

Dr. Sami Lababidi, DO - *Anesthesia*  
 Dr. Chris Biety, DDS, MS - *Dentistry*  
 Carrie Lababidi, BA, RRT - *Allied Health*  
 Goca Weis  
 Kathy Snider  
 Anna Domingo, RN  
 Amy Kennedy Romero, PA-C

### ASSOCIATE BOARD MEMBERS

Kate Pickett, DNP, MPH, RN  
 Allie Johnson, *Speech Therapy*

### ADVISORY BOARD

Jay LaVigne, Esq.  
 Donna LaVigne  
 Cathy McNamara  
 Dan Wennogle, Esq.

### STAFF

Maya Brook, *Executive Director*  
 Kaysie Logan, *Media Coordinator*

### IN-COUNTRY LIAISONS

Jonathan Macabales, *Philippines*  
 Mabel Palomar, *Philippines*  
 Noemy Escobar, *El Salvador*  
 Pastor Luis Aguillon, *El Salvador*  
 Michael Ciplotti, *Dominican Republic*  
 Nahirobi Peguero, *Dominican Republic*  
 Pedro Raylin Mercedes, *Dominican Republic*

### PHOTOGRAPHERS

Rhonda Diltz and Svein Kornerud

## OUR FINANCIALS

### Fiscal Year Ending in 3/31/2023

#### Income

Donations	\$125,963
Missioner Contributions	\$37,242
Fundraiser	\$20,616
Investment Loss/Other Income	(\$13,796)
<b>Total Income</b>	<b>\$170,025</b>

#### Expenses

Mission	\$158,300
Administrative	10,300
Financial	\$8,590
<b>Total Expenses</b>	<b>\$177,190</b>

Net Loss (\$7,165)

\*See cash/investments/assets below

Total Cash	\$99,430
Investments	\$99,487
<b>Total Assets</b>	<b>\$228,833</b>
Total Liabilities	\$898
<b>Total Equity</b>	<b>\$227,935</b>



## HELP US GIVE THE GIFT OF SMILES

- \$500** College Tuition/Expenses for One Year for an Education Fund Recipient
- \$250** A Cleft Lip or Cleft Palate Surgery for One Child
- \$150** One Education Fund Scholarship (one school year: tuition, uniforms, books, supplies, transportation)
- \$100** Medications for One Surgery
- \$50** A Take-Home Bag for One Patient
- \$25** Transportation for Patients and Their Families to and From the Hospital



P.O. BOX 214 , BROOMFIELD CO 80038 - MF@MENDINGFACES.ORG  
Mending Faces is 501(c)(3) Charitable Organization. Tax I.D. number: 27-2151804