



## FOR IMMEDIATE RELEASE

### Contact:

#### **Janet Lennon**

*The Dale and Leslie Chihuly Foundation*

Office: 206.781.8707 ext. 228/ Cell: 206.914.6175

janetl@chihuly.com

#### **Holly Jacobson**

*Path with Art*

Office: 206.650.0669

holly@pathwithart.org

### **The Dale & Leslie Chihuly Foundation Announces Gift to Provide Arts Engagement and Education to Those Living In/Recovering From Homelessness** *Path with Art* Receives Support in Its Mission to Transform Lives

**Seattle, Washington, October , 2016** – *The Dale and Leslie Chihuly Foundation* is pleased to announce a \$150,000 gift to *Path with Art*, a Seattle-based non-profit arts organization that provides access to the arts to adults living in and recovering from homelessness, addiction, mental illness, and other trauma. Committed to transforming lives by harnessing the power of creative engagement as a bridge to community and a path to stability, *Path with Art* is making a big difference. Founded in 2008, the organization has recently been gaining recognition in the broader community for its work; in 2014, *Path with Art* was awarded the Mayor’s Arts Award for Social Justice for its exemplary leadership in the field.

The demand for *Path with Art* services is extremely high; the organization currently partners with over thirty social service agencies, providing studio arts instruction, cultural excursions, and exhibition and performance opportunities to affiliated clients. In order to meet the need for its vital services, *Path with Art* has been eager to expand its offerings. The gift from *The Dale and Leslie Chihuly Foundation* will make it possible to greatly increase capacity and services.

Executive Director, Holly Jacobson said, “Art not only connects us to ourselves, it provides an avenue for us to recognize humanity in each other. We are grateful to Dale and Leslie Chihuly for their commitment to providing equitable access to the arts and, in doing so, elevating the voices of some of Seattle’s most vulnerable citizens. Now, more than ever, is a moment when disparate communities need to come together to find common ground and implement community-focused solutions. Art is a powerful tool for making these kinds of conversations possible.”

Founded by artist Dale Chihuly and his wife Leslie Jackson Chihuly, *The Dale and Leslie Chihuly Foundation’s* mission is to inspire and educate the public regarding all forms of art and to provide support to artists and arts organizations. “Dale and I are delighted to provide this gift to *Path with Art* as the organization not only resonates with our belief in the transformational power of arts education, but they are doing such amazing work through their programming to impact lives and provide bridges to understanding in our own community,” said Leslie Jackson Chihuly.

One Path with Art student relayed, “I got involved in Path with Art at a very low point in my life. It helped me channel my creativity, express myself, and keep me in a peaceful place. Art helps keep me centered and calm.” Another said simply: “Path with Art has given me a reason to live.”

On Nov. 2, 2015, Mayor Ed Murray and King County Executive Dow Constantine declared a state of emergency on homelessness. The number of people living on Seattle’s streets and in need of support services continues to be a major issue across the city and countywide and there is growing recognition of the need to find holistic solutions to this complex issues. “King County is committed to finding new and innovative ways to fight homelessness. My dad is an artist, and I appreciate the power of art - to heal, and to transform lives,” said King County Executive Dow Constantine. “I want to thank Dale and Leslie Chihuly for this generous gift, which will help bring art to those experiencing homelessness and other trauma.”

"Thank you to Dale and Leslie Chihuly for their incredible gift that will provide an opportunity for people to recover from addiction or the trauma of homelessness through the creative spirit," said Mayor Ed Murray. "Art can heal wounds that otherwise may go unseen. As a City we are proud to be a partner in such an innovative program that provides a creative outlet for our most vulnerable residents."

# # #

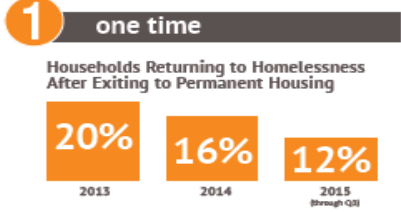
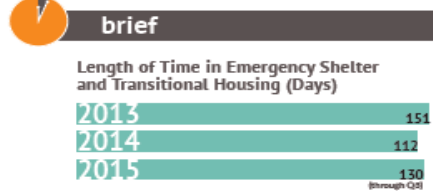
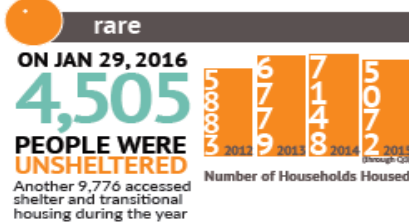
For more information about *The Dale and Leslie Chihuly Foundation* and Path with Art please visit [www.chihulyfoundation.org](http://www.chihulyfoundation.org) and [www.pathwithart.org](http://www.pathwithart.org)

For additional information about the homeless crisis in Seattle and King County visit <http://www.seattle.gov/mayor/>

**ALLHOME HOMELESSNESS IN KING COUNTY: WHO, WHY, AND WHAT CAN I DO?**

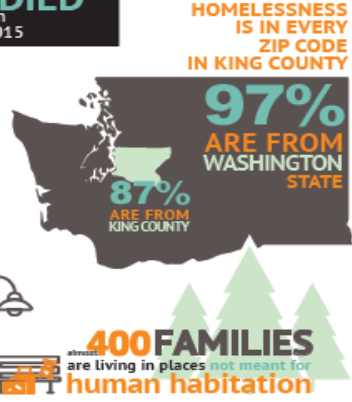
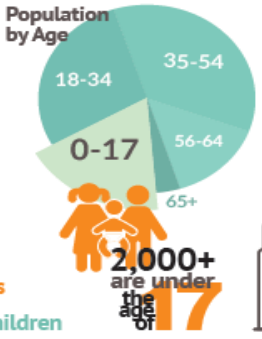
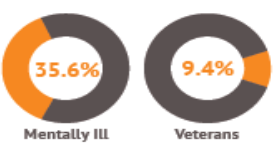


Homelessness is a crisis in King County. All Home (formerly the Committee to End Homelessness) is a community-wide partnership to make homelessness in King County rare, brief and one-time. We are focused on supporting homeless people in crisis today and addressing the root causes of the problem in our region. Here's a look at who's homeless, why people are homeless, what we are doing, and what you can do to help. For more, visit [www.allhomekc.org](http://www.allhomekc.org)

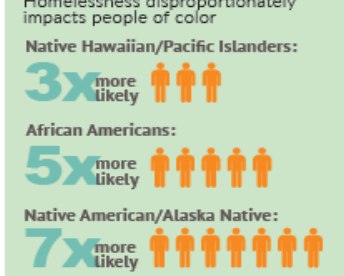


**HOMELESSNESS IS LETHAL: 91 PEOPLE DIED** while homeless in King County in 2015

**WHO IS HOMELESS?**



**RACIAL DISPARITY**



**50% ARE HOMELESS FOR THE FIRST TIME**

Infographic courtesy of the office of the Mayor