



PAINTING PATTERNED ANIMALS ART KIT by Donna Baker

Our Mission

Path with Art fosters the restoration of individuals, groups, and society from the effects of trauma through arts engagement and community-building. Path with Art is driven by our vision: A world where arts engagement is recognized as transformative-
connecting the individual with self, the self with community, and communities with society. In this world, the power of arts engagement is available for all. Welcome to our creative community!

Want to create your own Spirit Totem Animal?

In this art kit, we will create and design a Totem Animal that appeals to our inner Spirit. We are surrounded by beauty and creatures great and small, some of which leave a very powerful impact on us. You can choose one animal or many to create your own art project using pre-cut animal shape patterns, acrylic paint, a marker (to trace pattern if you prefer), tacky glue (to glue pattern if you prefer) on your own canvas. There are endless possibilities to how your final piece may turn out. Allow your imagination to flow and create what feels appropriate. Teaching Artist Donna 'damiana' Baker has many different art pieces she has created that can give you ideas in which to start your project. She is available for you if you need more ideas to inspire you.

What's in this kit?

1 - package of acrylic paints 4 pack assorted colors
1 - bottle of tacky glue
1 - package of paint brushes 3 pack
1 - permanent marker
1- canvas panel board 8x10
1 - pair of scissors

1 - sheet of parchment paper to put paint on and to mix colors
2 - pieces of newspaper to lay down under your canvas
3 - sheets of paper towels to wipe and clean brushes
19 - animal shape patterns

You will need a small container to hold water. It can be a plastic cup or a plastic container that you do not mind reusing for painting in the future. Please use cold water and fill the container or cup about $\frac{1}{2}$ to $\frac{3}{4}$ with the water.

Arranging your area for your project.

You will want to set up an area that is free and clear such as a table where you are able to sit comfortably. I am left-handed therefore, I like to have my paint, parchment paper(to lay paint on & mix), and paper towel to blot my brush if needed, to the left side of my canvas panel. I put my water container above my canvas piece to the left.

The paint brushes and marker laid to the side, as well.

For extra added protection (so as to not ruin your table), a plastic bag can be placed under the newspaper, below your canvas.

Here are some examples to get you thinking about colors, shapes, and animals:



Spirit Animal Totem(s) Meaning

Seahorse - confidence, grace.

Bear - courage, self preservation, great strength

Dragonfly - carefree, joy, imagination, transformation

Butterfly - metamorphosis, balance, soul, vulnerability

Puma - silent power, journey companion

Alligator - maternal, stealth, quickness

Giraffe - intelligence, elegance, intuition, cleverness

Moose - headstrong, longevity, steadfastness, wisdom

Snail - protective, aware, solitary, tender nature, healing

Rabbit - artistic, joyful, hyper-vigilant, steps through fear

Turtle - nurturer, protecting, strength, innocence

Buffalo - sacredness, life, gratitude, stability, blessings

Snake - impulsive, primal energy, rebirth

Horse - freedom, stamina, mobility, power

Frog - cleansing, rebirth, sensitivity, peace

Wolf - loyalty, perseverance, spirit, loner

Hummingbird - messenger, warrior, energy, infinity, playful

Raven - magical, introspective, courageous, transformational

A Note About Acrylic Paints:

Acrylic Paints are very flexible to use. They can be used similarly to watercolors where you can mix with water or if you prefer the paint to be a thicker consistency you can use alone. Typically when you are using different colors you will want to use different paint brushes or if you are using a specific brush because of its size then you will want to wash the brush off completely with soap and water so you may use a different color. If you are wanting to use multiple colors (example: a rainbow or outline to your pattern, etc) you will want the first layer of paint you put down on the canvas to dry completely before applying your next layer. Acrylic paint dries relatively quickly but you will want to let it set for about half an hour before moving on to your next step in creating your piece.

The acrylic paint in your kit is already in a liquid form, therefore, if you decide to add water you will want to do so sparingly. In other words you will not need a lot of water to dilute the paint because it is already liquid. You may use the piece of cardboard to pour paint(s) onto the surface and experiment mixing these colors together to achieve what you desire. (I will normally pour the liquid paint onto my canvas and paint with my brush evenly stroked adding another color if I want to mix it and then using the same brush I blend the colors together. I like to have multiple colors in my background sometimes.)

*****Please be sure to always wash your paintbrush(es) thoroughly after use. This is to ensure that the bristles stay intact and do not fall out or that your brush does not become completely caked with paint that can harden and ruin the brush. Mild soap and warm water work best.***

COLORS

After you set up your area to work on your art project let's look at the paints provided to figure out what colors you will want to use. Below I have provided a little color key to show you how to create different colors.

White and **Black** are normally considered monochromatic, therefore, these can be used to lighten or darken your other colors. Remember that you may not have every color provided for you in your set of paints.

Here are some variations you can combine to create other colors:

- Yellow + Blue = Green (more Yellow will create a brighter shade of Green whereas, using more Blue depending on the shade may create a darker Green).
- Red + Blue = Purple (again varying hues of Purple can be created depending on how much Red or Blue you use. If the Blue is a lighter shade then you may develop more of a Lavender hue).
- Red + Yellow = Orange (if you have Pink or Mauve tone in your set of paints and mix instead of using Red, you will create a softer color Orange) Don't be afraid to mix more than one color to see what you create!
- Purple + Green (or a Teal/Turquoise) = Lilac or Lavender color
- Blue + Orange = Brown OR Purple + Yellow = Dark Brown
- Purple + Red = Red Violet
- Yellow + Orange = Amber

Let's Get Started!



Step 1: Let's figure out which Spirit Animal Totems appeal to you. Take out the animal patterns and examine which one(s) you would like to utilize in your art piece. You'll want to cut out the animal shapes that you would like to use as a stencil. The animal patterns have already been designed and can either be used as a pattern in which you can trace onto your canvas using your permanent marker OR can be affixed to the canvas using the tacky glue.

Example 1: (note: two different colors used to create a scene. used bear patterns and affixed with tacky glue. made shapes to create a sun design in background)



Background painted and dried.

Step 2: The Background

Once you have selected your pattern you will want to explore ideas for the background of your piece. Do you want to have a solid background? If so, which color will you use? Do you want to use multiple colors or mix colors to customize your color? Would you like to create a pattern for your background? Do you want to create a scene with other objects - such as trees, sky, mountains?

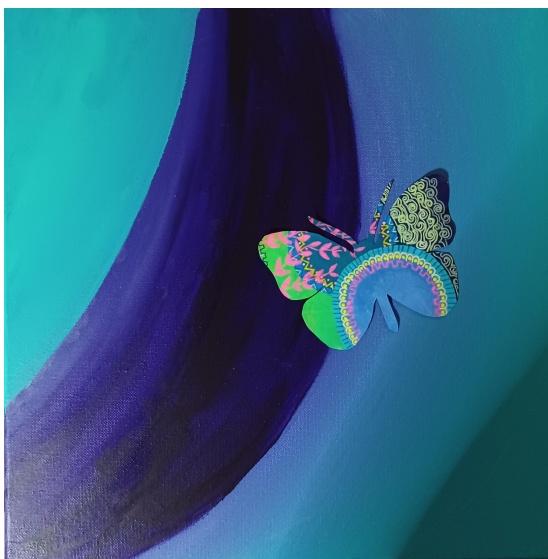
Let's begin by figuring out your color choice(s). Shall we paint our background? ;-)

Remember, there are no wrong ideas, only limitless possibilities! ;-)

See my examples for ideas

Step 3: Dry the Background + Consider Next Steps

After applying your paint, let the area dry for at least half an hour. Do you like your background color? Do you want to add patterns or objects? If so, locate the area in which you would like to affix your Spirit Animal Totem. Once the background paint has dried thoroughly, you will be able to use the tacky glue in your kit to apply your Totem. If you decide to trace your Totem Animal you may do so using your permanent marker. You will need to let the glue dry before continuing your project or if you use the permanent marker make sure this has dried as well.



Step 4: Placement of Animal

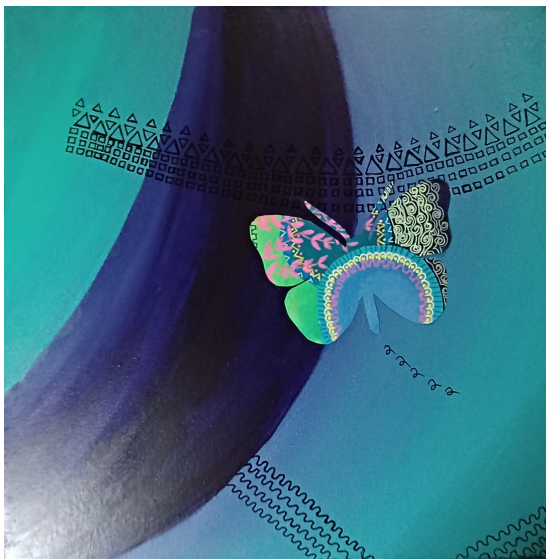
Take a look at your piece. What do you want to create next?

Balance can be important. Let's look at where you placed the Spirit Animal Totem. Is it centered? Did you place it in a "quadrant" (imagine your canvas sectioned in fours.) Where is the Animal Totem? The lower left corner? If so, maybe you would like to place some shapes or objects diagonally across from it.



Step 5: Glue Animal(s) In Place

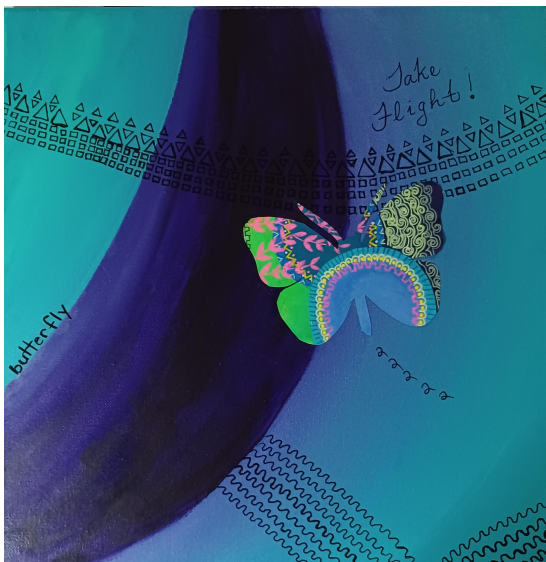
Using the animal pattern you like, position it where you want to place it. Using the tacky glue apply a generous amount on the back of the pattern and use your finger to spread glue over the complete back surface of the pattern and affix to canvas. Let sit dry for about 15 to 20 minutes.



Step 6: Add Patterns!

After the animal has been affixed with tacky glue and has dried, let's add some shapes and designs to the canvas. Be creative and have fun!

Patterns can be exciting to use in your piece. I like to use shapes. Circles, Squares, Triangles or you can explore squiggly, straight, fat, skinny lines. If you would like you can draw a realistic background with your permanent marker OR you paint it. Hills or mountains, a lake or river, trees with lots of branches or a palm tree or what about leaves scattered on the ground? Do you want clouds in the sky or sunshine? Do you want to have your Totem living indoors? Maybe you can create an indoor scene?



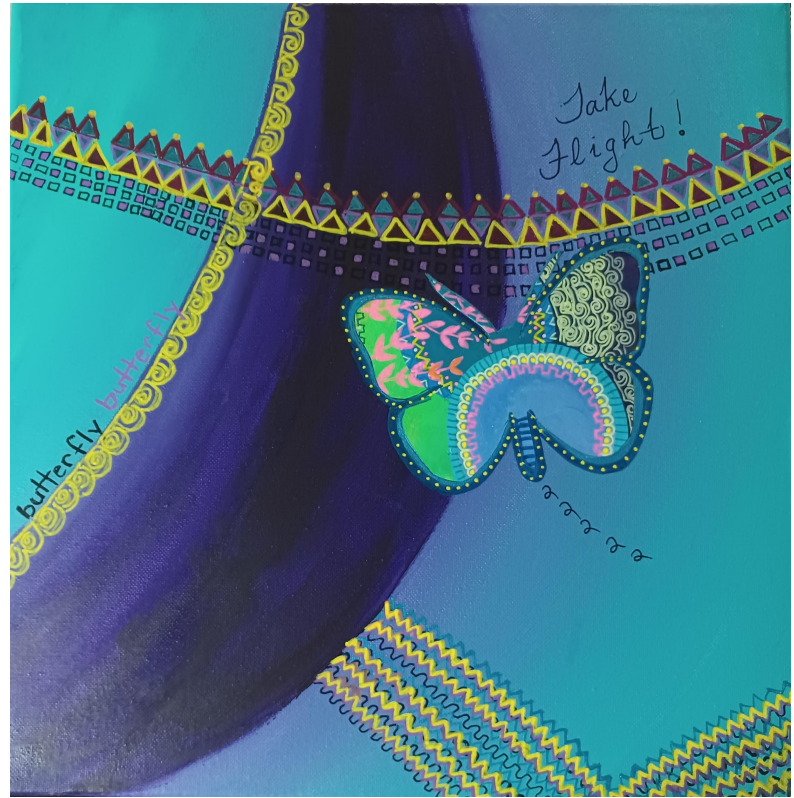
Feel free to add some words! What else would you like to do? Are you satisfied with your piece? Sometimes we may need to set it aside and revisit it later on to have an understanding of what else it may need or not. You will know and feel when it is completed.

Step 7: Final Colors/Details

Remember you can always look back at your project and add more color and/or shapes. Don't be afraid to experiment using texture, bold colors, and multiple patterns and shapes. I hope that you will enjoy your Spirit Animal Totem and continue to use your creativity to enhance your life and that of others.

Thank you for joining me on this fun-filled activity!

Best Wishes,
Donna H. Baker



OPEN STUDIO

Weekly on Zoom
Mondays, 3:30 - 5:00 pm

Zoom information:

Meeting ID: 948 7272 9885

Passcode: path

Call in by phone: +1-253-215-8782, 948 7272 9885#

This is a Drop In class, no prior registration is necessary



Open Studio is a supportive space to work on individual creative projects, share artwork, and connect with peers. Creative Mentors are available for one-on-one support. Bring out your paints, pencils, art kits, or whatever supplies you have on hand and let's make some art together!



Art Transforms

Path with Art's Community Blog

ART TRANSFORMS COMMUNITY BLOG

We would love to see what you have created! You can take a picture of your artwork and submit it to our community blog, Art Transforms.

All who are part of the Path with Art community are welcome and invited to contribute to the Art Transforms community blog! Check it out:

<https://arttransforms.blog>

For instructions on how to contribute and submission guidelines, visit

<https://arttransforms.blog/submissions/>

If you don't have access to the internet, contact blog@pathwithart.org or call **206-601-7112** to arrange another submission option.