

Floor Cloth

PDF Download



24" x 50"

sharon holland + Sew

FREE Pattern



Skill Level: Beginner

Size: 24" x 50"

Designer/Maker: Sharon Holland

Materials: Coastline by Sharon Holland from Art Gallery Fabrics

NECESSITIES

- 5/8 yard **C-59908 Sand Bar** (khaki geometric) canvas
- 1-1/8 yards 54" wide natural canvas (includes backing)
- 3/4 yard ROC-LON Multi-Purpose Cloth
- 3 yards ecru decorative trim and coordinating thread
- 2-1/4 yards turquoise decorative trim and coordinating thread
- 1-3/8 yard fringe and coordinating thread
- Heavy duty sewing needle
- Heavy duty thread
- Dritz Wash Away Wonder Tape
- Water solvable marking tool
- Clear ruler
- Spray baste
- Fray Check (optional)
- 1 pint Fiber-Lok Non-Skid Rug Backing (optional)

Read through all instructions before beginning. Sew pieces right sides together and use a 1/2" seam allowance throughout unless otherwise stated.

PREP

Cut all strips from selvage to selvage. Remove selvage edges.

From the khaki geometric:

Cut (1) 19" x 51" strip

From the natural canvas:

Cut (1) 25" x 51" strip for backing. Cut (2) 4" x 51" strips.

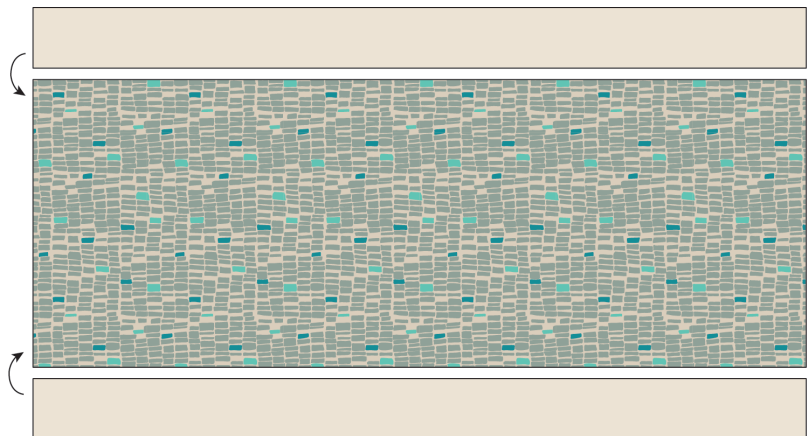
From the Multi-purpose Cloth:

Cut (1) 24" x 50" strip

SEW

1. Set sewing machine to a wide zigzag stitch and zigzag around all edges of the khaki geometric strip and all edges of the natural canvas strips. If using the optional Fray Check, follow the manufacturer's directions and apply Fray Check to the edges of all strips in place of machine zigzagging.

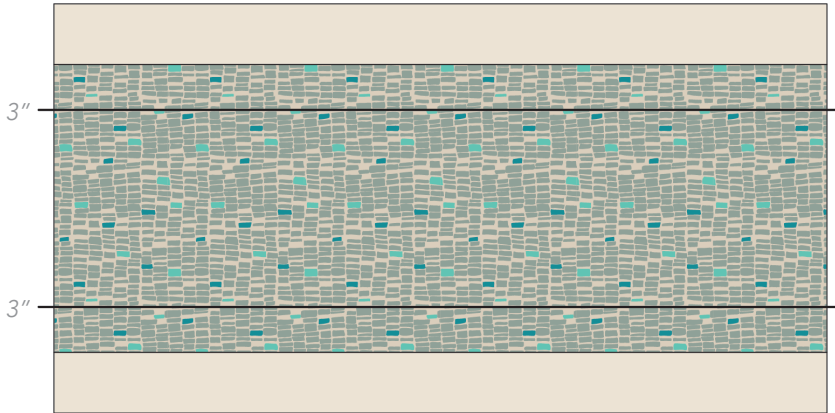
2. Stitch the 19" x 51" khaki geometric strip between (2) 4" x 51" natural canvas strips, right sides together, using a 1/2" seam allowance. Press seams open to reduce bulk.



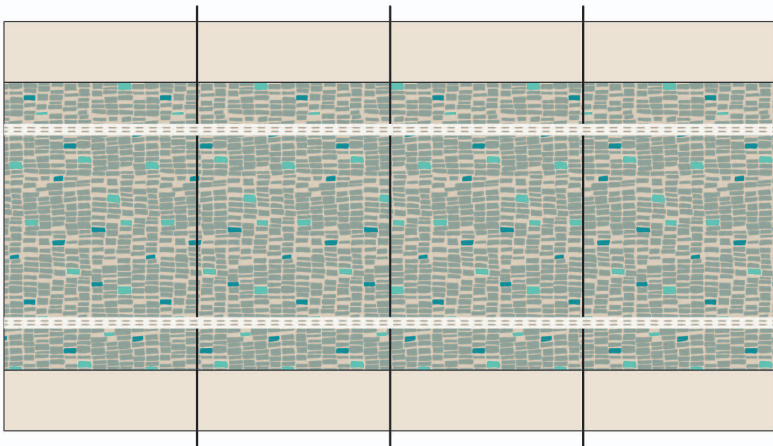
3. Following the manufacturer's directions, spray the wrong side of the 24" x 50" Multi-Purpose Cloth with spray baste. Center the sprayed Multi-Purpose Cloth on the wrong side of the rug assembly. **Tip:** Smooth from the center outward to eliminate wrinkles or bubbles. Reposition if necessary. Press with a hot/dry iron from the rug assembly side to make layers as smooth as possible.

4. On the right side of the rug assembly, measure and mark a line 3" in from the canvas/khaki geometric seam line that runs parallel to a 51" long raw edge. Cut (1) 51" lengths of Wonder tape and adhere to the drawn lines. Cut (1) 51" lengths of ecru decorative trim. Remove the paper backing on the Wonder Tape. Center and adhere

the decorative trim in place. Stitch through all thicknesses on each long edge of the trim to secure in place with coordinating thread. Repeat for the other long side.



5. In the same manner as in step 4, find the center of the rug assembly and draw a line parallel to the 25" wide edges. Fold the raw 25" short raw edge to the center line and finger press fold to crease. Use the crease line to draw another parallel line. Repeat for the other side to make a total of (3) 25" drawn lines. Cut (3) 25" lengths of Wonder Tape and adhere tape to the drawn lines. Cut (3) 25" lengths of turquoise decorative trim. Center and adhere trim to tape. Sew in place using coordinating thread.

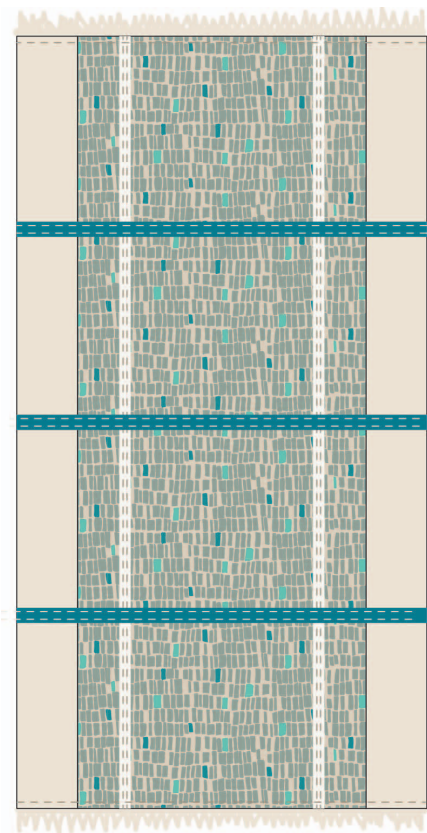


6. With right sides together and edges matched, pin the rug assembly to the backing. Starting and stopping with a backstitch, stitch around all sides, leaving a 10" opening centered on one short edge. Clip corners and turn right side out through the opening. Turn opening edge under 1/2" to the wrong side and press. Topstitch close to edge on all sides.

7. Measure the finished edge of one short side. Add 1" to this measurement and cut a length of fringe to this size. Note: In the sample rug the fringe was attached to the back of the rug rather than the top of the rug. Instructions will be given to achieve the same look. If you prefer to attach the fringe to the front of the rug

simply reverse the direction of the hem on the fringe. Turn a 1/2" hem to the right side on each end of the length of fringe. Stitch turned ends to hold the raw edges in place. Position the fringe right side up to the back of the rug with turned ends hidden between the back of the fringe and right side of the rug backing. Pin or use Wonder Tape. Note: Be sure to overlap the rug edge and fringe enough to catch both layers when securing the fringe to the rug with stitching lines. Stitch with one or two passes to secure. Repeat for the other short side.

8. Rug backing can be applied to the back if desired (follow manufacturer's instructions).



COPYRIGHT

For personal use only. Reproduction of any part of this pattern in any way whatsoever without written permission is strictly prohibited. If this design is used in a quilt for display, please credit "Sharon Holland" for the design. All rights reserved.

© 2016 Sharon Holland