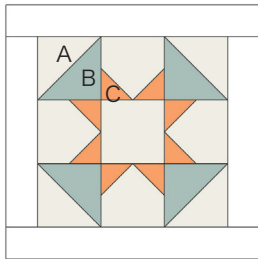


Sewcial Bee Sampler

sharon holland and
Maureen Cracknell →→→

#2 A Dandy



Material List

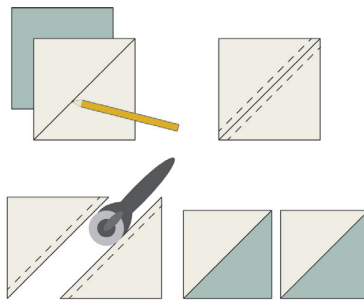
- (2) 3-7/8" squares and (5) 3-1/2" squares fabric A
- (2) 3-7/8" squares fabric B
- (8) 2" squares fabric C
- (2) 2" x 12-1/2" rectangles and (2) 2" x 9-1/2" rectangles for frame

Read through all instructions before beginning. Remove selvages. Sew pieces right sides together and use a 1/4" seam throughout unless otherwise stated.

Half-Square Triangles

1. Draw a diagonal line on the wrong side of each 3-7/8" fabric A square.

2. Place a marked 3-7/8" A square right sides together with a 3-7/8" fabric B square. Sew a 1/4" seam on each side of the drawn line. Cut apart on the line. Open and press. Makes 2 half-square triangle (HST) units. Make a total of 4 HST units.

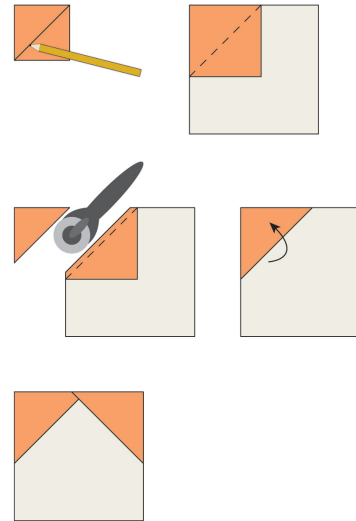


Quick Corner Units

1. Draw a diagonal line on the wrong side of each 2" fabric C square.

2. Noting orientation, place a marked 2" square right sides together on a corner of a 3-1/2" fabric A square. Sew just outside the line on the corner side to keep the unit square. Trim 1/4" past the stitch line. Press open. Noting orientation, repeat on the other

corner as shown. Make a total of 4 units.



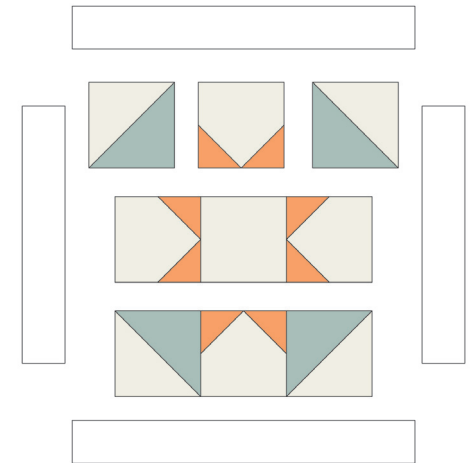
Block Assembly

1. Referring to the Block Assembly Diagram, and noting placement and orientation, sew the units and square into 3 rows of 3 units/square each. Join the rows to make the block.

2. Stitch the (2) 2" x 9-1/2" framing strips to opposite sides of the block. Stitch the (2) 2" x 12-1/2" framing strips to the remaining sides of the block.

Copyright

For personal use only. Reproduction of any part of this pattern in any way whatsoever without written permission is strictly prohibited. If this design is used in a quilt for display, please credit "Sharon Holland" for the design. All rights reserved. ©2017 Sharon Holland For pattern support: contact@sharonhollanddesigns.com



Block Assembly Diagram

Notes