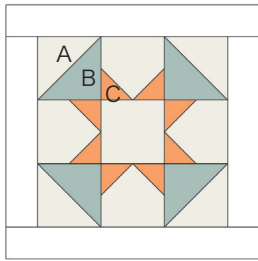


# Sewcial Bee Sampler

sharon holland and  
Maureen Cracknell →→→

## #2 A Dandy



### Material List

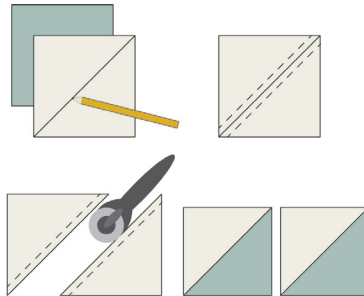
- (2) 3-7/8" squares and (5) 3-1/2" squares fabric A
- (2) 3-7/8" squares fabric B
- (8) 2" squares fabric C
- (2) 2" x 12-1/2" rectangles and (2) 2" x 9-1/2" rectangles for frame

Read through all instructions before beginning. Remove selvages. Sew pieces right sides together and use a 1/4" seam throughout unless otherwise stated.

### Half-Square Triangles

1. Draw a diagonal line on the wrong side of each 3-7/8" fabric A square.

2. Place a marked 3-7/8" A square right sides together with a 3-7/8" fabric B square. Sew a 1/4" seam on each side of the drawn line. Cut apart on the line. Open and press. Makes 2 half-square triangle (HST) units. Make a total of 4 HST units.

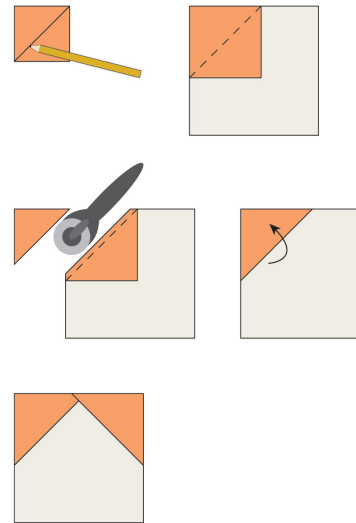


### Quick Corner Units

1. Draw a diagonal line on the wrong side of each 2" fabric C square.

2. Noting orientation, place a marked 2" square right sides together on a corner of a 3-1/2" fabric A square. Sew on the drawn line. Tip: Sewing just outside the line on the corner side will keep the unit square. Trim 1/4" past the stitch line. Press open. Noting orientation, repeat on the other

corner as shown. Make a total of 4 units.



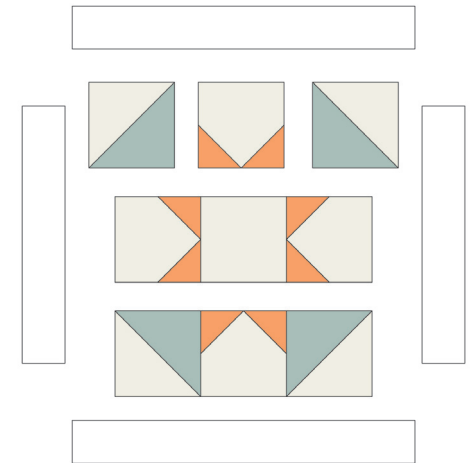
### Block Assembly

1. Referring to the Block Assembly Diagram, and noting placement and orientation, sew the units and square into 3 rows of 3 units/square each. Join the rows to make the block.

2. Stitch the (2) 2" x 9-1/2" framing strips to opposite sides of the block. Stitch the (2) 2" x 12-1/2" framing strips to the remaining sides of the block.

### Copyright

For personal use only. Reproduction of any part of this pattern in any way whatsoever without written permission is strictly prohibited. If this design is used in a quilt for display, please credit "Sharon Holland" for the design. All rights reserved. ©2017 Sharon Holland For pattern support: contact@sharonhollanddesigns.com



Block Assembly Diagram

Notes