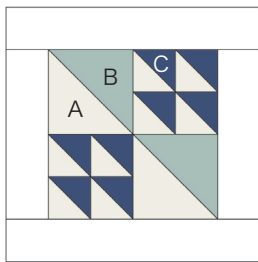


Sewcial Bee Sampler

sharon holland and
Maureen Cracknell →→→

#3 FLOCK



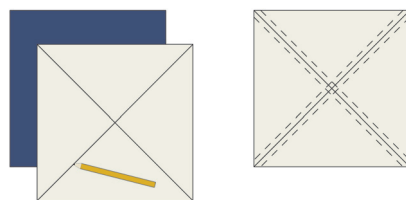
Material List

- (1) 5-³/₄" square and (1) 4-⁷/₈" square fabric A
- (1) 4-⁷/₈" square fabric B
- (1) 5-³/₄" square fabric C
- (2) 2-¹/₂" x 12-¹/₂" rectangles and (2) 2-¹/₂" x 8-¹/₂" rectangles for frame

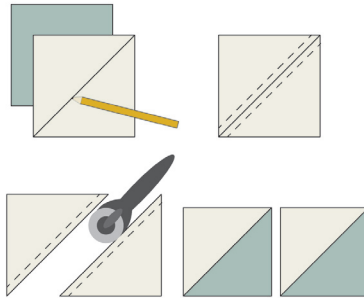
Read through all instructions before beginning. Remove selvages. Sew pieces right sides together and use a ¹/₄" seam throughout unless otherwise stated.

Large Half-Square Triangles

Draw a diagonal line on the wrong side of the 4-⁷/₈" fabric A square. Place the marked square right sides together with the 4-⁷/₈" fabric



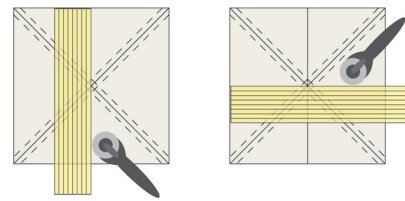
B square. Sew a ¹/₄" seam on each side of the drawn line. Cut apart on the line. Makes 2 large half-square triangle (HST) units.



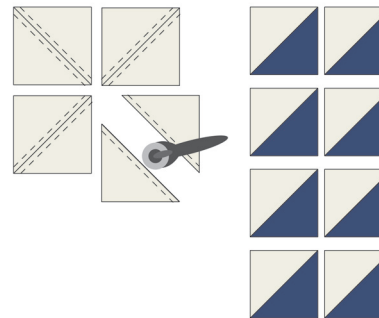
Small Half-Square Triangles

1. Draw a diagonal line on the wrong side of the 5-³/₄" fabric A square. Draw another diagonal from the remaining corners. Place the marked 5-³/₄" fabric A square right sides together with the 5-³/₄" fabric C square. Sew a ¹/₄" seam on each side of the drawn line. In the same manner stitch on each side of the remaining diagonal line.

2. Align the short end of a ruler with the straight edge of the squares and the long side centered at the intersection of the diagonal lines. Cut the square in half, but leave the cut pieces in place. Without disturbing the shape of the original square, cut the square in half again in the same manner, dividing it into quarters.



3. Cut the square quarter-sections apart on the drawn line. Open and press. Makes 8 small half-square triangle (HST) units.

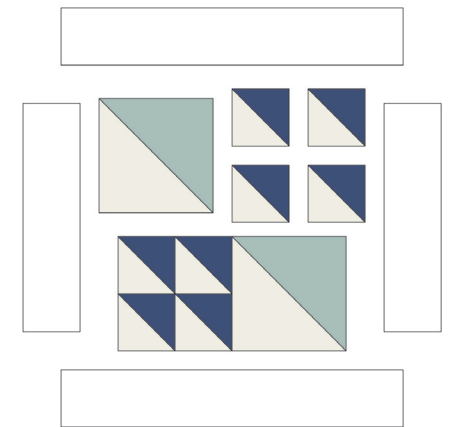


Block Assembly

1. Noting placement and orientation, sew 4 of the small HST units into 2 rows of 2 units each. Join the rows to make one section. Make a total of 2 matching sections.

2. Noting placement and orientation, sew the HST sections and large HST units into 2 rows of 2 sections/units each. Join the rows to make the block.

3. Stitch the (2) 2-¹/₂" x 8-¹/₂" framing strips to opposite sides of the block. Stitch the (2) 2-¹/₂" x 12-¹/₂" framing strips to the remaining sides of the block.



Block Assembly Diagram

Copyright

For personal use only. Reproduction of any part of this pattern in any way whatsoever without written permission is strictly prohibited. If this design is used in a quilt for display, please credit "Sharon Holland" for the design. All rights reserved. ©2017 Sharon Holland For pattern support: contact@sharonhollanddesigns.com