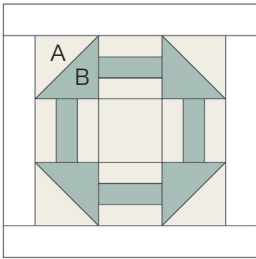


Sewcial Bee Sampler

sharon holland and
Maureen Cracknell →→→

#4 CROW'S NEST



Material List

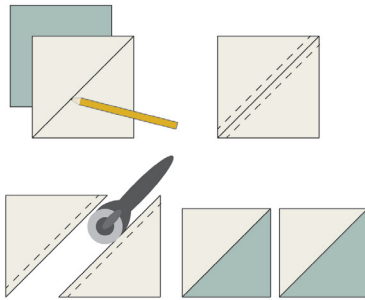
- (2) 3-7/8" squares, (1) 3-1/2" square, and (8) 1-1/2" x 3-1/2" strips fabric A
- (2) 3-7/8" squares and (4) 1-1/2" x 3-1/2" strips fabric B
- (2) 2" x 12-1/2" rectangles and (2) 2" x 9-1/2" rectangles for frame

Read through all instructions before beginning. Remove selvages. Sew pieces right sides together and use a 1/4" seam throughout unless otherwise stated.

Half-Square Triangles

1. Draw a diagonal line on the wrong side of each 3-7/8" fabric A square.

2. Place a marked 3-7/8" A square right sides together with a 3-7/8" fabric B square. Sew a 1/4" seam on each side of the drawn line. Cut apart on the line. Open and press. Makes 2 half-square triangle (HST) units. Make a total of 4 HST units.



Strip Piece Units

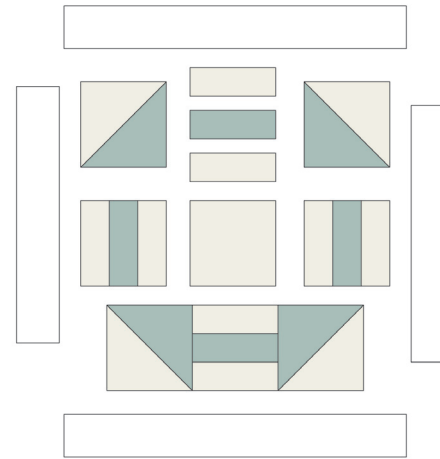
Referring to the Block Assembly Diagram, stitch a 1-1/2" x 3-1/2" fabric B strip between (2) 1-1/2" x 3-1/2" fabric A strips. Make a total of 4 strip piece units.

Block Assembly

1. Noting placement and orientation, sew one strip piece unit between 2 HST units to make a row A. Make 2 A rows. Sew the 3-1/2" fabric A square between 2

strip piece units to make a row B. Join the rows to make the block.

2. Stitch the (2) 2" x 9-1/2" framing strips to opposite sides of the block. Stitch the (2) 2" x 12-1/2" framing strips to the remaining sides of the block.



Block Assembly Diagram

Notes

Copyright

For personal use only. Reproduction of any part of this pattern in any way whatsoever without written permission is strictly prohibited. If this design is used in a quilt for display, please credit "Sharon Holland" for the design. All rights reserved. ©2017 Sharon Holland For pattern support: contact@sharonhollanddesigns.com