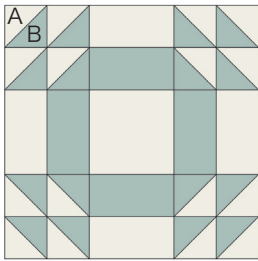


Sewcial Bee Sampler

sharon holland and
Maureen Cracknell →→→

#9 WEDDING RING



Material List

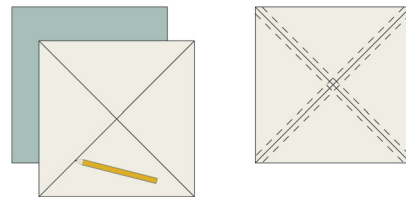
- (2) 5- $\frac{3}{4}$ " squares, (1) 4- $\frac{1}{2}$ " square, and (4) 2- $\frac{1}{2}$ " x 4- $\frac{1}{2}$ " rectangles fabric A
- (2) 5- $\frac{3}{4}$ " squares and (4) 2- $\frac{1}{2}$ " x 4- $\frac{1}{2}$ " squares fabric B

Read through all instructions before beginning. Remove selvages. Sew pieces right sides together and use a $\frac{1}{4}$ " seam throughout unless otherwise stated.

Half-Square Triangles

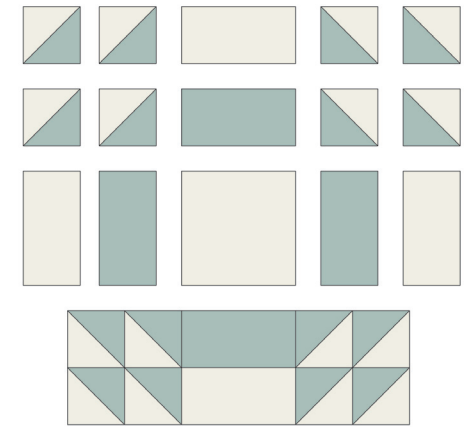
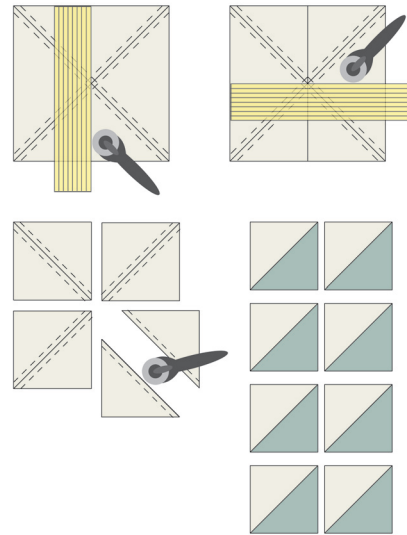
1. Draw a diagonal line on the wrong side of a 5- $\frac{3}{4}$ " fabric A square. Draw another diagonal from the remaining corners.

2. Place a marked fabric A square right sides together with a 5- $\frac{3}{4}$ " fabric B square. Sew a $\frac{1}{4}$ " seam on each side of the drawn line. In the same manner, stitch on each side of the remaining diagonal line.



3. Align the short end of a ruler with the straight edge of the squares and the long side centered at the intersection of the diagonal lines. Cut the square in half, but leave the cut pieces in place. Without disturbing the shape of the original square, cut the square in half again in the same manner, dividing it into quarters.

4. Cut the square quarter-sections apart on the drawn line. Open and press. Makes 8 half-square triangle (HST) units. Make a total of 16 HST units.



Block Assembly Diagram

Notes

Block Assembly

Referring to the Block Assembly Diagram, and noting placement and orientation, sew (1) 2- $\frac{1}{2}$ " x 4- $\frac{1}{2}$ " fabric A rectangle between 4 HSTs to make row A. Make a total of 2 A rows. Sew (1) 2- $\frac{1}{2}$ " x 4- $\frac{1}{2}$ " fabric B rectangle between 4 HSTs to make row B. Make a total of 2 B rows. Sew the 4- $\frac{1}{2}$ " fabric A square between 2 each 2- $\frac{1}{2}$ " x 4- $\frac{1}{2}$ " fabric A and B rectangles to make row C. Join the rows to make the block. Note that this block finishes out to 12" square and doesn't require a frame.

Copyright

For personal use only. Reproduction of any part of this pattern in any way whatsoever without written permission is strictly prohibited. If this design is used in a quilt for display, please credit "Sharon Holland" for the design. All rights reserved. ©2017 Sharon Holland For pattern support: contact@sharonhollanddesigns.com